

# Class 6 Percentage Worksheet with Answers

Thinking Juggernaut

Name: \_\_\_\_\_

Date: \_\_\_\_\_

Total Marks: 24

## Understanding Percentages - Class 6

### What is Percentage?

Percentage means "per hundred" or "out of 100". The symbol is %

### Key Conversions:

- Fraction to Percentage: Multiply by 100
- Decimal to Percentage: Multiply by 100
- Percentage to Fraction: Divide by 100
- Percentage to Decimal: Divide by 100

**Fraction → %**

$\frac{1}{2}$

↓  $\times 100$

**50%**

**Decimal → %**

0.75

↓  $\times 100$

**75%**

**% → Decimal**

60%

↓  $\div 100$

**0.60**

## Important Formulas

1. **Percentage = (Part/Whole)  $\times$  100**
2. **To find percentage of a number: (Percentage/100)  $\times$  Number**
3. **To convert fraction to %: Fraction  $\times$  100**
4. **To convert % to fraction: Percentage  $\div$  100**



## Sample Problems

**Example 1:** Convert  $\frac{3}{5}$  to percentage

**Solution:**

$$\frac{3}{5} = \left(\frac{3}{5}\right) \times 100 = 0.6 \times 100 = 60\%$$

**Answer:** 60%

**Example 2:** Find 25% of 80

**Solution:**

$$25\% \text{ of } 80 = \left(\frac{25}{100}\right) \times 80 = 0.25 \times 80 = 20$$

**Answer:** 20

## Part A: Conversion Practice

★ Easy Level

1. Convert  $\frac{1}{5}$  to percentage.



1 out of 5 parts =  $\frac{1}{5}$  = ?%

2. Convert 0.75 to percentage.

3. Convert 45% to a fraction in simplest form.

4. Convert 60% to a decimal.

THINKING

5. Which is greater: 0.8 or 75%?

JUGGERNAUT

6. Convert  $\frac{2}{8}$  to percentage.

7. What fraction of 100 is 35%?

8. True or False:  $0.5 = 50\%$

☐ True ☐ False

## Part B: Finding Percentages

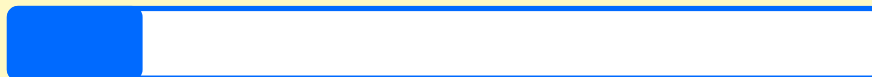
☆☆ Medium Level

9. Find 20% of 150.

10. Find 15% of 200.

THINKING JUGGERNAUT

15% of 200 = ?



Total: 200

15%

$15/100 \times 200 = ?$

11. What is 10% of 450?

12. Calculate 35% of 80.

13. In a class of 40 students, 25% are girls. How many girls are there?

14. A shopkeeper gives 10% discount on a shirt priced at ₹500. What is the discount amount?

15. Rahul scored 36 marks out of 60. What is his percentage?

## Part C: Word Problems

★★★ Hard Level

16. A school has 800 students. If 45% are boys, how many boys are in the school?

17. Priya saved ₹1200 from her monthly allowance of ₹2000. What percentage of her allowance did she save?

Monthly Allowance: ₹2000

Saved: ₹1200

Spent: ₹800

Percentage Saved =  $(1200/2000) \times 100 = ?\%$

Find what % of 2000 is 1200

18. In an exam, Amit got 72 marks out of 90. What is his percentage? If passing marks are 40%, did he pass?

19. A fruit vendor had 250 apples. He sold 60% of them. How many apples did he sell? How many are left?

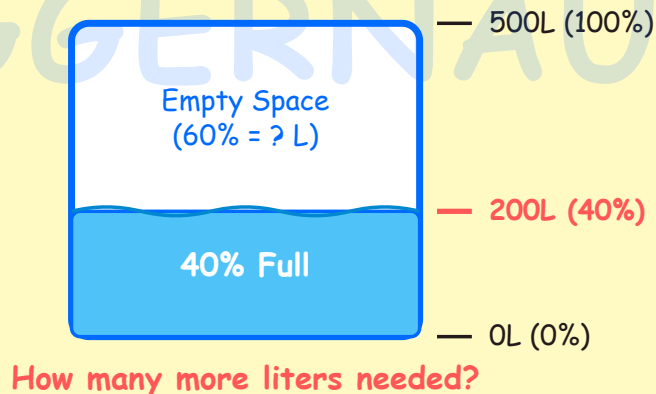
20. The price of a bicycle is ₹4500. If the price increases by 20%, what will be the new price?

**21.** In a library, there are 600 books. 35% are science books, 25% are story books, and the rest are other books. How many books are in each category?

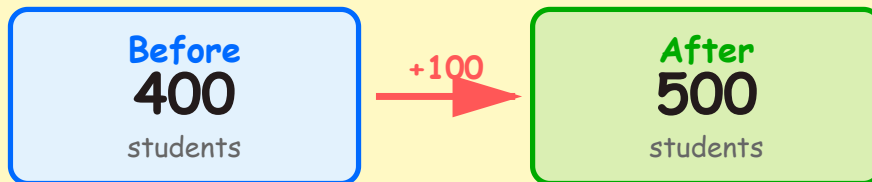
**22.** A cricket player scored 85 runs out of the team's total of 250 runs. What percentage of the team's runs did he score?

**23.** A water tank can hold 500 liters. If it is 40 % full, how many more liters are needed to fill it completely?

THINKING  
JUGGERNAUT



24. A school's student population increased from 400 to 500. What is the percentage increase?



$$\% \text{ Increase} = (\text{Increase}/\text{Original}) \times 100 = ?$$

THINKING

JUGGERNAUT

## | Answer Key

### Part A: Conversion Practice

1. 20% ( $1/5 \times 100 = 20\%$ )
2. 75% ( $0.75 \times 100 = 75\%$ )
3.  $9/20$  ( $45/100 = 9/20$  in simplest form)
4. 0.60 or 0.6 ( $60 \div 100 = 0.6$ )
5. 0.8 is greater ( $0.8 = 80\%$ , which is  $> 75\%$ )
6. 25% ( $2/8 = 1/4 = 25\%$ )
7.  $35/100$  or  $7/20$  in simplest form



8. True

## Part B: Finding Percentages

9. 30 ( $20\% \text{ of } 150 = 20/100 \times 150 = 30$ )

10. 30 ( $15\% \text{ of } 200 = 15/100 \times 200 = 30$ )

11. 45 ( $10\% \text{ of } 450 = 10/100 \times 450 = 45$ )

12. 28 ( $35\% \text{ of } 80 = 35/100 \times 80 = 28$ )

13. 10 girls ( $25\% \text{ of } 40 = 25/100 \times 40 = 10$ )

14. ₹50 ( $10\% \text{ of } 500 = 10/100 \times 500 = 50$ )

15. 60% ( $36/60 \times 100 = 60\%$ )

## Part C: Word Problems

16. 360 boys ( $45\% \text{ of } 800 = 45/100 \times 800 = 360$ )

17. 60% ( $1200/2000 \times 100 = 60\%$ )

18. 80% ( $72/90 \times 100 = 80\%$ ); Yes, he passed ( $80\% > 40\%$ )

19. Sold: 150 apples ( $60\% \text{ of } 250 = 150$ ); Left: 100 apples ( $250 - 150 = 100$ )

20. ₹5400 (Increase =  $20\% \text{ of } 4500 = 900$ ; New price =  $4500 + 900 = 5400$ )

21. Science: 210 books ( $35\% \text{ of } 600$ ); Story: 150 books ( $25\% \text{ of } 600$ ); Others: 240 books ( $40\% \text{ of } 600$ )

22. 34% ( $85/250 \times 100 = 34\%$ )

23. 300 liters (Current:  $40\% \text{ of } 500 = 200\text{L}$ ; Needed:  $500 - 200 = 300\text{L}$ )

24. 25% increase (Increase = 100; Percentage =  $100/400 \times 100 = 25\%$ )

## Scoring Guide

Total Questions: 24 | Total Marks: 24

Score Range	Performance Level	What to Do Next
20-24	☆☆☆ Excellent!	Outstanding! You've mastered percentages!
15-19	☆☆ Very Good!	Great work! Practice word problems more.
10-14	☆ Good Effort!	Keep practicing conversions and calculations.
0-9	Keep Trying!	Review the formulas and practice daily.

### Study Tips:

- Remember the basic formulas for conversions
- Practice converting between fractions, decimals, and percentages
- For word problems, identify what is given and what is asked
- Always simplify fractions when converting to percentage
- Check your answers by working backwards

✨ Great Job Completing This Worksheet! ✨

Keep practicing and you'll become a math champion!

 Download more worksheets like this

 Visit: <https://thinkingjuggernaut.in/>



## NEP-aligned, hands-on experiential kits

NEP-2020 aligned hands-on kits and workbooks that help kids think independently, solve problems, and explore experiential learning.

Explore Kits

Founded by NIT & IIT Alumni



## NEP-aligned, hands-on experiential kits



Applied Maths Kit (Age 7+)



Applied Maths Kit (Age 10+)



Interdisciplinary STEM Kit  
(Age 7+)



Interdisciplinary STEM Kit  
(Age 10+)



Entrepreneurship Kit



Finance Literacy Kit



Chess Starter Kit



Explore Sanskrit Kit

Founded by IIT & NIT Alumni, Thinking Juggernaut is a NEP-2020 aligned experiential learning platform that builds 21st-century skills, connects subjects, and links classroom concepts to real-life challenges.

View All Kits Online →