

ARRO
Studio

Interior architect

Client
Clarks Originals Design Studio

Clarks
Originals
Design
Studio

Location
Paris, France
Area
300 m²
Completion Date
2015
Photography
Edgard Cesar

ARRO studio was given the opportunity of creating the new Clarks Originals design space, settled in a 300m2warehouse. The project integrates the conception of various zones and the design of furniture such as desks, meeting table, trolleys, shelves, shoe wall, closets...

The main idea for this workplace is to encourage creativity and optimize exchanges between the designers, developers and product managers of the Clarks Originals team - while addressing the challenges and respecting the flow of the footwear design process.

Part of the historical industrial C&J Clarks site built in 1825, this space used to be the tools plant for the shoe manufacture. The ARRO project splits the space into 5 different zones, each defining a specific function, yet blending one into the other.

Acting as a key element of the workplace, an 8-meter long floating

table built around the existing INP beams creates a focal point for the team members to gather and connect.

The « Modern factory »embodies ARRO's reinterpretation of the historical C&J Clarks surrounding buildings striking features (triangular roof tops of the old shoe factory, central brick chimney). Enclosing 3 rooms, the « Modern factory »encompasses the director's office, a storage room and a large meeting room.

The open workspace benefits from an exceptional natural luminosity thanks to the large, original windows of this industrial site. ARRO created large cork panels which can rotate and slide on the existing INP ceiling beams, using travel trolleys. This versatile work environment enables the employees to close their own space or choose to leave it open, depending on their needs.

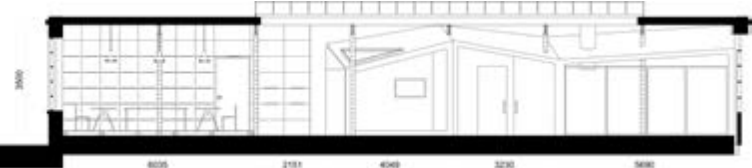
At one end of the workspace, ARRO created a functional « Shoe wall », on which each shelf used to display the footwear designs double up as handles that open and turn the wall into a giant closet - hence allowing a maximum capacity of shoe storage as well as keeping the organization of the various samples and tests as simple and logical as possible.

Finally, the Leather storage, created as a closed facility, is surrounded by a library which shelves induce continuity into the workspace and are facing the floating center table. Part of this storage wall is made out of translucent glass panels. These reveal, thanks to a specific lighting system, the variety and highlight each specifity of the showcased leather rolls.

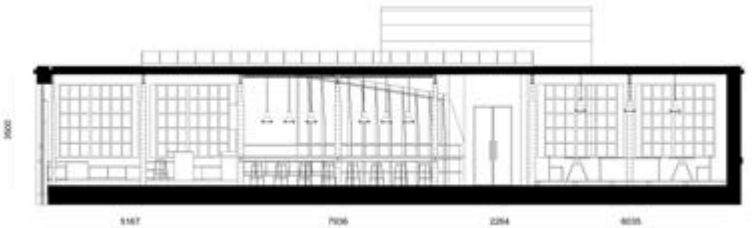
The Lounge area, a space dedicated to inspiration and relaxing moments, is located on the opposite side from the Leather storage. Surrounded by

large windows, the lounge integrates a small kitchen, a bar, a large storage bench system in the corner, as well as an oversized suspended light specifically designed by ARRO for this project, made out of metal welded tubes from which various leather hides are hanging.

ARRO conceived this work environment as a bridge between creation, focus, meeting, presentation and inspirational moments, which are all key to the Clarks Originals creative process.

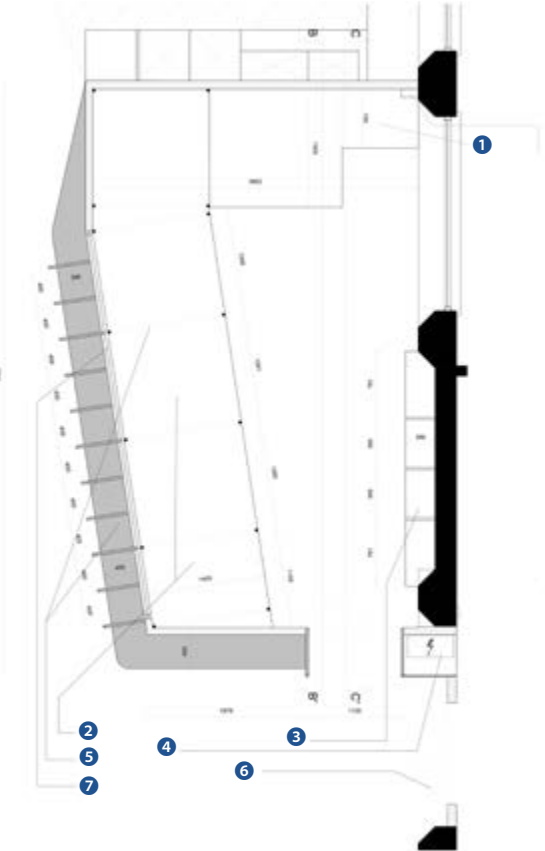


Section B

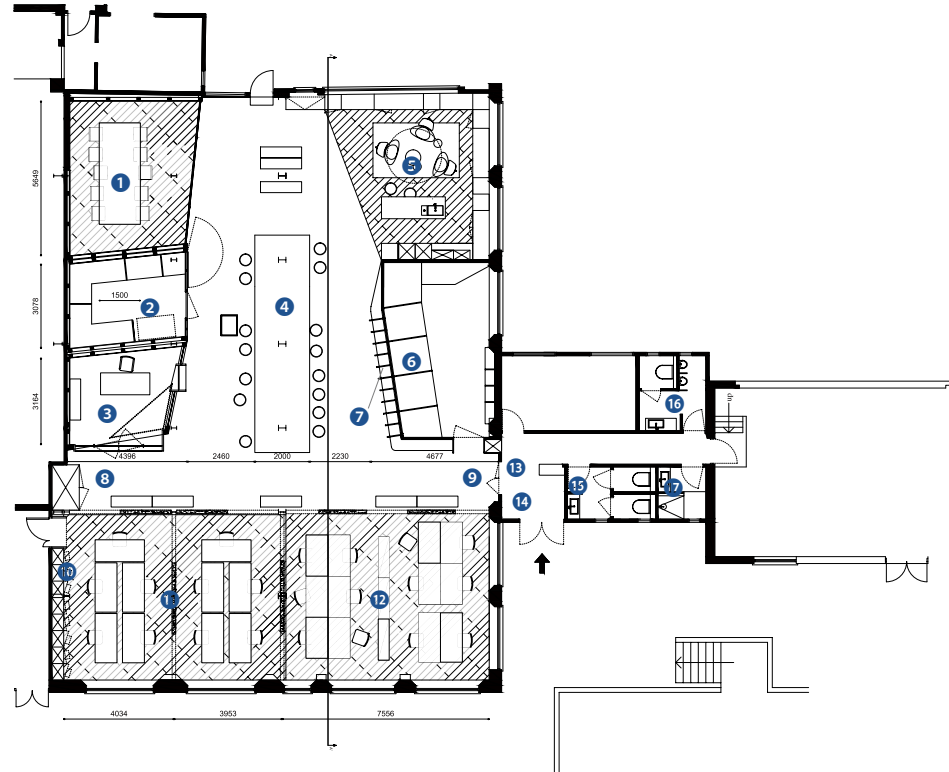


Section A





- Leather Storage
- 1 Computer area hole for cables
 - 2 MDF panels painted in pure white / leather shelves
 - 3 MDF panels painted in pure white / catalogs / samples shelves
 - 4 General electric panel
 - 5 Natural solid wood panel
 - 6 Double glass doors / steel frame painted in black
 - 7 Large translucent glass window



- Ground Floor Plan
- 1 Meeting room
 - 2 Storage room
 - 3 Office
 - 4 Hot desk /meeting table
 - 5 Lounge area
 - 6 Leather storage
 - 7 Bookcase
 - 8 Networking / printer
 - 9 Double door entrance
 - 10 Shoe wall
 - 11 Designers
 - 12 Range / pd
 - 13 Wall entrance
 - 14 Hall
 - 15 Women restrooms
 - 16 Men restrooms
 - 17 Shower room





Table Details

- 1 Cut out in the solid wood panels to access to the multi electric sockets
- 2 20Mm opening to pass the electric cable for computers etc...
- 3 Deep link hinge to open the little shelf
- 4 Push system to open the little shelf panel
- 5 Multi electric sockets mounted on the horizontal inp beam
- 6 Table top screwed on the horizontal inp beam

