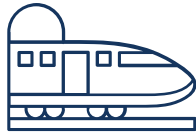


MARINE CAPABILITY STATEMENT



We specialise in solutions for difficult & complex projects including:



RAIL



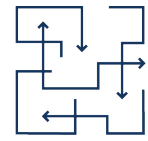
CIVIL



MARINE



LOW HEAD ROOM/
TIGHT ACCESS



LOGISTICALLY
DIFFICULT

WHO WE ARE

Backed by a team that yields over 40 years of expertise, Piletech has earned its reputation as Australia's total solutions company for piling, foundation systems, civil works, marine, and structural steel manufacturing.

We excel as one of the few companies nationwide that provide comprehensive and resourceful end-to-end foundation solutions for projects of all sizes and complexities.

By designing, manufacturing, installing, and certifying in-house – we ensure superior products and seamless project management by dedicated experts.

Our holistic and robust documentation procedure guarantees quality and traceability, providing clients with complete peace of mind from start to finish of the project

Fully compliant with all **ISO** and **QBCC** regulations, we uphold the highest standards for our innovative solutions.

Piletech prides itself on building strong and collaborative partnerships – resulting in **high-quality, efficient, cost-effective, and safe project outcomes** for our clients in the engineering, foundation, civil, and marine construction industries.



HIGH-QUALITY



EFFICIENT



COST-EFFECTIVE



SAFETY DRIVEN



SERVICE CAPABILITIES

Pairing our unique capabilities and expertise with our own specialised equipment, we're committed to consistently completing your projects both ahead of time and budget.

By focusing on detailed **geotechnical analysis, innovative solutions, thorough risk assessment, and strong relationship management** – we ensure the utmost success for each of your complex projects.

Piletech offers a diverse product portfolio that allows it to create some of the most **innovative and holistic solutions** in the industry.

We pride ourselves on being at the forefront of research and development into piling and anchoring technology and ensure the most professional and current solutions are deployed in our projects.

We follow strict quality guidelines that comply with all relevant standards and codes.

✓ AS1554.1 and AS1554.3 Welding

✓ AS2159 Piling

✓ AS4100 Steel Structures

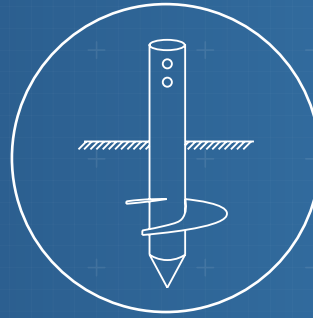
✓ AS360 Concrete Structures



**Tailored Design &
Construct Packages
& Project Consulting**



**Up to 1800mm
Diameter Bored Piles**



**Screw Piles Designed,
Manufactured & Installed**



**Pile Load Testing
Capacity up to 2000kN**



Plant Hire

Earth Retention Solutions

Piletech are experts in the design, manufacturing, and installation of earth retention solutions for a wide variety of projects – including bridge abutments, seawalls, embankments, land subsidence, and slope stability.

With advanced capability and innovation, we utilise a combination of **sheet, soldier, and concrete piling**, alongside **screw anchoring** and **soil nailing**, to create a bespoke solution that best suits your project.

Piling Systems

A key advantage that sets Piletech apart from competitors is our **diverse range of piling systems** that create the most effective solution for the unique needs of each client. In marine and infrastructure projects, we specialise in considering external factors including environmental impact, fuel efficiency, geotechnical conditions, and the permanency of the required structure. **Our expert team determines the best piling foundation for your project.**

This optimal solution is achieved through the strategic application of screw, driven steel, and bored piles, or a combination of systems.

Manufacturing Solutions

By choosing to **manufacture in-house**, we're able to deliver innovative, high-quality products with industry-leading turnaround times - ensuring the success of your project.

Pile Load Testing

Piletech International offers comprehensive load testing for a variety of pile types, ensuring compliance in line with **Australian Standards**. Our specialised solar farm load testing methods allow for quick mobilisation, installation, and testing of large quantities of piles, regardless of location across the country.

Vacuum Excavation

Given the frequent presence of underground services and obstructions at construction sites, we deploy our own vacuum excavation equipment to preempt the risk of collisions and **minimise delays**.

MARINE

With an established reputation for excellence, Piletech are proven, specialised experts in the Marine industry.

With an established reputation for excellence, Piletech are proven, specialised experts with many years experience in the Marine industry. Our advanced **in-house** engineering capabilities and **cutting-edge** equipment allow us to consistently deliver innovative,

cost-effective solutions for our marine-based clients. Working within strict time and budget constraints, as well as various technical challenges, Piletech understands the unique demands of this industry, and consistently **exceeds expectations**.



**Fast
Mobilisation**



**Own Marine Equipment
and Vessel Capabilities**

DEPLOYED FLEET



Spudded Barges



Dumb Barges



Work Boats



Mobile Plant

CAPABILITIES

Marine Sea Walls & Revetment Walls

- Piled Footings
- Slope Stability solutions

Marine Piling

- Screw pier solutions
- Bored pier solutions

Foreshore Protection

- Erosion Control
- Armour stone Installation and Profiling
- Beach nourishment
- Earthworks
- Vegetation Removal

Material and Equipment Transport

- Barge and Vessel Hire
- Geotechnical Investigation Support

Asset Servicing

- Jetty and Pontoon Removal and Repair
- Concrete Repairs and Maintenance
- Demolition and Removal of existing structures
- Beach and Canal Cleaning

Engineered Solutions

- RPEQ Certification



CASE STUDY 1

REVETMENT WALL REBUILD & SLOPE STABILITY

PROJECT OVERVIEW

Piletech is routinely engaged by long-term client Redland City Council as Principal Contractor to design and construct revetment wall upgrades, rock armouring, and slope stabilisation for projects relating to the revetment wall rectification of the Raby Bay Canal Estate upgrade program.

CHALLENGES

- Operating in heavily tide-dependent environments with no land access.
- Working within residents' backyards, while ensuring minimal disruption.
- Managing varying material slip depths and various geotechnical differences across projects.

RESULT

Over the past five years, Piletech has successfully delivered numerous projects for the Redland City Council, consistently working to improve design and cost efficiency.

With each new project comes a set of unique challenges and requirements, and thanks to Piletech's commitment to quality, long-lasting relationships, and cutting-edge innovation – it has developed multiple adaptive solutions to be applied as standardised approaches for various project parameters.

Given the high demand and scarcity of specialised resources during these projects, Piletech mitigates risks by utilising its own drawbridge barge, dumb

barge, work boats, excavators, all inhouse equipment, reducing dependence on subcontractors and avoiding potential unavailability and cost escalation.

Piletech is also committed to fostering positive relationships with residents, ensuring they are well-informed about the impacts and timelines of work affecting their properties. As such, minimal disruption is caused to the community during the course of these upgrades.

It is for these reasons that Piletech has maintained its strong reputation with the council, being a company built on the professional execution of projects and proactive risk mitigation while addressing complex challenges.



CASE STUDY 2

DRAKE CANAL FISHING PLATFORM DEMOLITION

PROJECT OVERVIEW

Redland City Council engaged Piletech to remove and dispose of a dilapidated fishing platform in the Raby Bay canal estate, along with restoring the surrounding area. Acting as Principal Contractor, Piletech leveraged its expertise and resources to deliver the project with meticulous planning and execution—efficiently and cost-effectively removing the structure and reinstating the footpath and parkland to their original condition.

CHALLENGES

- The works were carried out in a marine environment, requiring careful planning around tidal movements.
- As the site was located adjacent to a main road, effective traffic management systems were essential to minimise disruption to local traffic and pedestrians.
- During construction, it was identified that the revetment wall was heavily reliant on the fishing platform for lateral stability. A rapid engineering solution was needed to stabilise the wall and prevent the potential loss of council assets and additional costs to ratepayers.

RESULT

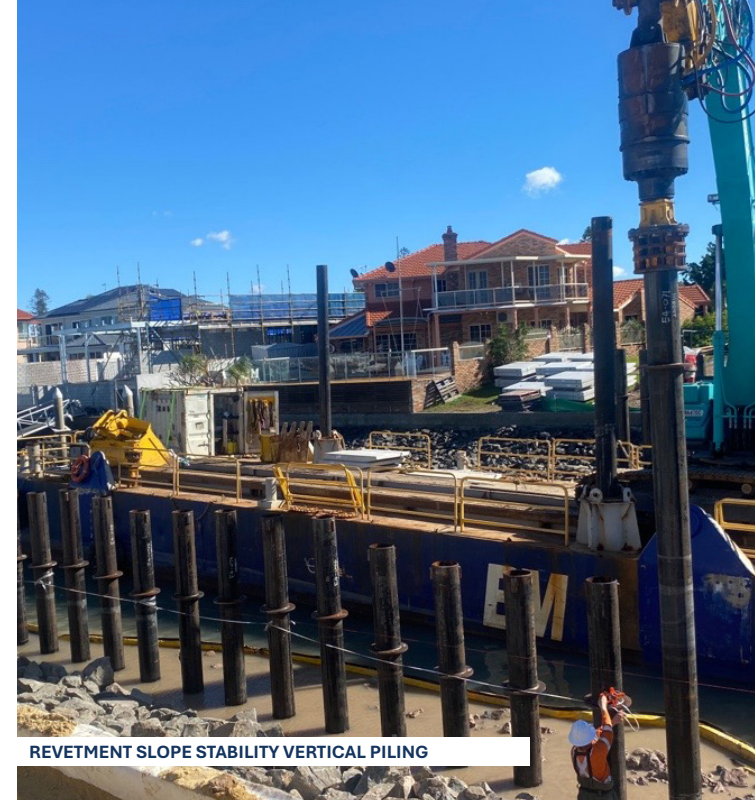
Overcoming tidal constraints and lateral stability challenges, Piletech successfully delivered a strategic and cost-effective Dead Man Anchor System to stabilise the revetment wall. Partnering with a trusted traffic control provider, the team ensured minimal disruption to local residents. Thanks to thorough planning and efficient execution, the project was completed safely, on time, and without incident.



REVETMENT SLOPE STABILITY RATED ANCHORS



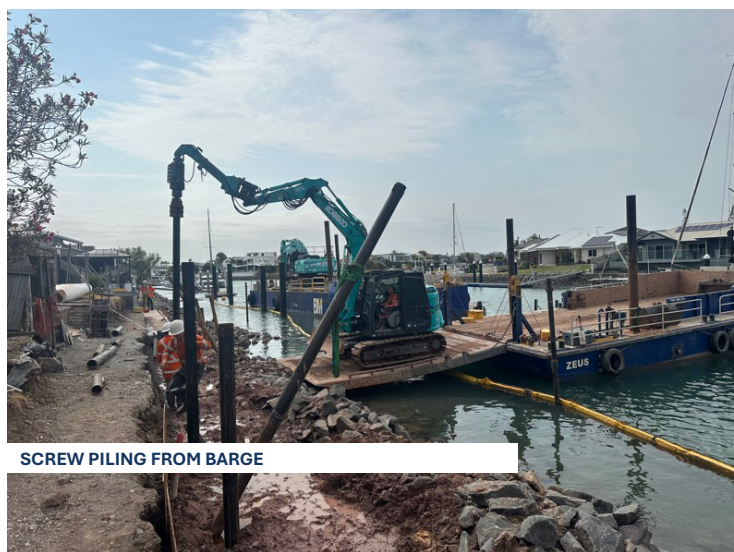
REVETMENT WALL FOUNDATION PILING



REVETMENT SLOPE STABILITY VERTICAL PILING



CONSTRUCTION SUPPORT AND MATERIAL TRANSFERS



SCREW PILING FROM BARGE



CONSTRUCTION AND BARGE SUPPORT - PERSONNEL TRANSFERS



GET IN TOUCH

Call us today to explore our high-quality, cost-effective, bespoke products and services, which when combined with our professional workmanship, ensure you receive the best solution for your project.

PILETECH.COM.AU

ENQUIRIES@PILETECH.COM.AU

0472 727 234 OR 0409 945 826

86C KINGSTON RD, UNDERWOOD QLD 4119

QBCC 15447427

PILETECH
PTY LTD