



The VK-1 is engineered for easy start up and change over. The graphical user interface is easy to use and intuitive. Up to 99 different sharpening programs / saw blade can be loaded into the onboard memory.

VK-1 V-Top Sharpener Specifications

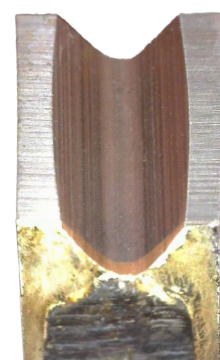
Size	63"W (160 cm) X 55"D (140 cm) X 73.5"H (187 cm)
Electrical	480V 3Ø 15 Amp
Air	No compressed air required. Hydraulic clamping
Weight	Approximately 1,962 pounds (890 Kg)
Coolant	Water emulsion coolant with integrated filtration system
Blade sizes	7.1" (180 mm) - 26" (180 mm) Dia. Up to 0.24" (6mm) thick

Features

- Hydraulic advance and clamping
- Easy Touch screen display
- Direct Drive Motor
- Fully Enclosed
- Up to 26" diameter saw
- LED light
- Parts manual on screen
- Water based coolant with integrated filtration system
- Water Emulsion



V-Top Trim



V-King Gang

Why V-Top geometry on your Trim Saw Blades? V-Top blades have the fiber shearing geometry necessary for cross cutting green or dry lumber to length. The balanced cutting action of the dual points helps prevent ripping out fibers and possible downgrade. The Double Point design allows more flexibility in saw design and tooth quantity. And the double point design demands only one replacement inventory. No more needing a Left Hand tip and only having rights in inventory.

