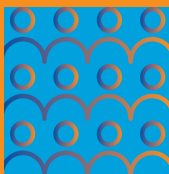
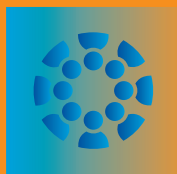




WEL ENERGY TRUST 2026 Election of Trustees



INSTRUCTION BOOKLET & CANDIDATE DIRECTORY



Disclaimer

This candidate directory has been compiled to provide information to electors about candidates for the 2026 election of trustees to the WEL Energy Trust. The Trust and the Electoral Officer accept no responsibility for the content or accuracy of the information contained in the statements supplied by candidates.

2026 Election of Trustees

WEL Energy Trust is holding its triennial election of trustees this year, with voting closing at noon on Friday 26 June 2026.

WEL Energy Trust was formed in 1993 and now has a 100% shareholding (on behalf of the community) in WEL Networks Ltd, which owns the electricity lines and equipment throughout Hamilton City, most of the Waikato District and a small part of the Waipa District.

The Trust appoints the directors of WEL Networks Ltd and is responsible for ensuring that the company operates successfully. It also receives dividends and interest from the company and at its discretion distributes surplus income to its beneficiaries — which can include the company, its customers, the community and the three councils in the area.

Seven trustees are elected to the Trust every three years by electors in the Trust's district. To have your say on who will run the Trust for the next three years, read the information in this booklet about each of the candidates who are standing, then follow the instructions on the voting document included in this pack to cast your vote.

Pōtitanga o ngā Kaitiaki 2026

E whakahaere ana e te ropū WEL Energy Trust ōna pōtitanga kaitiaki toru tau hei tēnei tau, ā, ka kati ngā pōti ā te poupoutanga o te rā o te Rāmere (Paraire) 26 Pipiri (Hūne) 2026.

I whakatūria te WEL Energy Trust i te tau 1993, ā, he 100% ināianeī ōna hea (he mea pupuri mā te hapori) i WEL Networks Ltd nōna nei ngā ahohiko me ngā utauta puta noa i te tāonenui o Kirikiriroa, te nuinga o te Rohe o Te Waikato, me tētahi wāhi riki o te Takiwā o Waipa.

E whakatū ana te WEL Energy Trust i ngā kaiwhakahaere o WEL Networks Ltd nōna anō te kawenga he momoho te mahi a te kamupene. Koia anō kei te whiwhi pūtea me te huamoni nō te kamupene, ā, māna anō e whiriwhiri ki te tohatoha i ngā moni whiwhi hemihemi ki tōna hunga whaipānga — kei roto anō pea ko te kamupene, ōna kiritaki, te hapori me ngā kaunihera e toru i tēnei takiwā.

Tokowhitu ngā kaitiaki ka pōtitia ia toru tau e ngā kaipōti ki te WEL Energy Trust i tōna rohe. Hei whakapuaki i tōu whakaaro ko wai hei whakahaere i te WEL Energy Trust mō te toru tau ka tū mai, pānui i ngā kōrero i tēnei pukapuka mō ia kaitono ka tū, ka whai i ngā tohutohu kei te pepa pōti i tēnei mōkī hei pōti.

3 Ways to Vote

by post, online or vote box

1 vote by post

Tick your preferred choices on the voting document.

Tear off the voting document along the perforation.

Post the voting document in the replypaid envelope in a DX Mail box.



2 vote online

Go to www.voteonline.co.nz/wel2026

Enter your access code and password (as shown on your voting document)

Follow the online instructions on how to vote.



3 drop into a vote box

Tick your preferred choices on the voting document.

Tear off the voting document along the perforation.

Drop your completed voting document in one of the following vote boxes:

- Chartwell Library, 5 Lynden Court, Chartwell, Hamilton
- Dinsdale Library, 22 Dinsdale Road, Hamilton
- Hamilton City Council, Municipal Building, Garden Place, Hamilton
- Te Kauwhata Library, 1 Main Road, Te Kauwhata
- Waikato District Council's Main Office, 15 Galileo Street, Ngaaruawaahia

There will be no vote boxes at the offices of WEL Energy Trust, as previously advertised.



Voting Closes NOON, FRIDAY 26 JUNE 2026

Voting documents will be accepted up until Thursday 2 July 2026 provided that the envelope is postmarked before the close of voting



Rachel AFEAKI

More Grants, Discounts & Impact

MCom, CFinstD

Elected in 2023 and subsequently re-elected annually as Chairperson over the past three years, I have proudly led an awesome team that has delivered outstanding results and impact; community grants increased by 61%, electricity discounts by 41%, and total distributions by 48%. We also secured a further 35.8% increase in electricity discounts for 2026/27 to help ease rising economic and household costs. A Chartered Fellow Director with 25 years of governance, business and community leadership experience, I remain committed to disciplined stewardship, transparency and collaboration to ensure consumers and communities benefit from strong financial returns and long term community investments.

There is More to do. We must responsibly leverage the Trusts \$80+ million in reserves whilst protecting the asset for current and future generations.

Please vote Rachel Afeaki and the More Grants, Discounts & Impact Team for proven leadership, credibility and impact.



Clyde BARTLE

Increase Discounts & Grants

I joined the Increase Discounts & Grants team to deliver practical financial relief to households and businesses, while strengthening support for our wider community.

I am standing to ensure WEL Energy Trust delivers stronger financial relief through increased discounts and meaningful community grants.

As a former healthcare professional, I worked closely with people and saw the real impact financial stress has on individuals and families. This experience continues to shape my practical, people-focused approach to decision-making.

I bring an independent, grounded perspective, with a focus on value for money and outcomes that genuinely benefit our community.

I support increasing discounts and strengthening grants to deliver real relief today, while protecting the long-term strength of our electricity network for future generations. My priority is to ensure the Trust remains financially sound, responsibly governed, and delivers more value back to the community it serves.



Geoff BOOTH

Your Discounts Team

WEL Energy Trust is here to protect and benefit you, the consumer. As a beneficiary, you are entitled to your discount through the network's regulated profits. In a time when rising electricity prices cause significant stress for many families, returning these profits is essential. Your Discounts Team is committed to do this.

Experience matters. Having been a WEL Energy Trustee, a School Principal for over 12 years, and a community leader, I see the real world needs of our families daily. Our team is resolute and has a proven history in keeping our promises with delivering both discounts and grants. We have done it before, and we will continue to do it.

Give us the majority we need to roll up our sleeves and work for you. Please vote and Re-Elect Geoff Booth and the 'Your Discounts Team'.

It's your trust, your money, our integrity.
Thank you.



Anne CAO-OULTON

MMgt

I believe strong communities are built through opportunity, support, and smart investment. I support retaining the WEL customer discount scheme while strengthening the Trust's long-term impact through increased grants and targeted community investment. In challenging economic times, local families and community organisations need practical support that delivers real outcomes.

With more than 25 years' experience across business, media, community leadership, and professional sport, I bring a practical, people-focused approach. As a businesswoman, former journalist, former professional basketball player, and community advocate, I understand the importance of teamwork, accountability, and making decisions that benefit the wider community.

As founder and organiser of the Waikato Cherry Blossom Festival, I have worked to bring people together, celebrate diversity, and create opportunities that strengthen social and economic connection across the Waikato. I believe the WEL Energy Trust should continue investing in initiatives that support local families, empower community organisations, and help future generations thrive.



Alan CHEW

More Grants, Discounts & Impact

BMS(Hons) FCA FCGNZ CMA

Born into abject poverty, I came to the Waikato in 1975. The Waikato gave me everything, and I have spent 40 years giving back. I founded Houston Technology in 1986, the region's longest-established IT firm, leading in AI and medical automation.

Fourteen years on Trust Waikato and WEL Energy have given me a businessperson's view of community need. Re-elected 2023 as the highest-polling candidate, my team delivered: grants up 61%, electricity discounts up 41%, distributions up 48%, including a 35.8% discount lift for 2026/27.

Still more to do – responsibly putting the trust's \$80m of long-idle reserves to work, while growing and protecting the asset for future generations. With a looming recession and rising electricity prices, More matters more than ever. I am proud to stand with the More Grants, Discounts & Impact Team – the most credentialed team in the election. Please re-elect Alan Chew.

Vote the More team.



Amanda COLLINS

Independent

I wish to stand for the WEL Energy Trust, supporting strong governance of an essential community asset and to help ensure customers receive fair value from the network they collectively own.

I am a Royal Institution of Chartered Surveyors' Quantity Surveyor with extensive experience in large infrastructure projects, bringing a clear focus on value for money, financial discipline, and long term thinking. My professional experience includes working across both water and electricity networks, giving me a practical understanding of how infrastructure investment decisions affect reliability, costs, and outcomes for customers.

As a trustee, my priority would be ensuring electricity rebates remain meaningfully beneficial to households, supporting affordability and resilience across the network. I believe careful oversight, transparent decision making, and a balanced approach to investment are essential to protecting customer interest.

I am committed to practical, independent governance that delivers real benefits back to the community.



Annette EVANS

BMS, GDipNFP

First, I want to reassure you, you'll get your discount; I expect every candidate will make that pledge!

As well as being a householder paying for power, I have financial expertise and a deep understanding of the local community sector.

Until recently, I've been Manager/Educator ('The Endo Lady') of Insight Endometriosis Charitable Trust. I've served voluntary roles on charity boards, not-for-profit and funding committees, including four elected terms on COGS (government funding for community organisations). I've written and assessed thousands of grant applications. I understand the challenges and the opportunities.

Previously I've worked in accounting/finance/admin roles for Fonterra and Dairy Goat Co-operative.

Using my experience, I want to make sure the Trust invests wisely through community grants with impact. This matters to customers and everyone living in the area.

Vote for me for customer and community voice, financial accountability, and wise investment in community initiatives that count.



Fiona GEORGE

Independent

I am a Waikato-based business owner and community leader with a background in banking, where I was recognised for delivering strong results

while building trusted relationships.

Today, I lead within the not-for-profit sector, working alongside organisations to strengthen sustainability, leadership, management and community impact. My work has given me a practical understanding of the challenges and opportunities facing our region.

I bring a thoughtful, ethical approach to decision-making, along with curiosity and a commitment to listening well. I value transparency, fairness, and ensuring decisions reflect the long-term interests of our community.

I am standing for the WEL Energy Trust Board to contribute balanced, community-focused governance and help ensure the Trust continues to deliver meaningful benefits for the people of the Waikato.



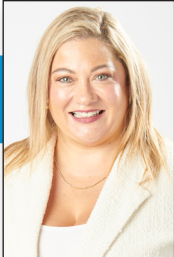
Erin GRIFFITHS

Increase Discounts & Grants

I joined the Increase Discounts & Grants team to deliver meaningful financial relief and increase opportunity through grant investment. In the current economic climate, ensuring discounts reach WEL Network customers, while valued clubs and community projects continue to receive the vital grant support they rely on, remains a key priority.

Through my role as co-founder and a director of the Waikato Screen Regional Film Office, along with prior local community board service, I bring experience in economic development, governance, and transparent financial oversight, as well as the ability to identify opportunities that deliver sustainable and measurable outcomes.

I strongly believe in empowering self-sufficiency by supporting non-profit economic development initiatives that create employment, strengthen wellbeing, and build resilient communities. A hand up, rather than a handout. As a Waikato proud resident, I am dedicated to working alongside a strong, capable team committed to strengthening communities across the WEL Network area.



Marie HAMILTON

More Grants, Discounts & Impact

My Name is Marie Hamilton and I've proudly called Hamilton home for more than 47 years. I'm a wife of 25 years to Ryan, a mother of three adult children and a long-time small business owner with deep roots in our community.

For over 20 years, I've owned and operated successful homeware, florist and cleaning businesses. Helping grow franchises across Hamilton, Tauranga and Auckland. Running businesses through both good and tough times has given me real-world experience in budgeting, financial discipline, staff leadership and delivering value for customers.

I'm actively involved in the community through volunteering, local organisations and a proud foundation member of the Ruakura Rugby Football Club. I believe WEL Energy Trust needs practical governance focused on outcomes, responsible stewardship, strategic investment and ensuring support reaches the people who need it most.

Please vote Marie Hamilton and the More Grants, Discounts & Impacts team.



Natasha HARVEY

More Grants, Discounts & Impact

BMS, FCA, CMIInstD

I believe the benefits of WEL ownership should flow back to the people and communities of the Waikato.

As a Chartered Accountant with 20 years' commercial experience, and more than a decade serving on boards across community and charitable organisations, I understand how strong financial stewardship and disciplined decision-making can create meaningful community outcomes.

I want to help ensure the Trust continues delivering meaningful value through increased discounts, sustainable community investment, and strong support for local organisations. As living costs continue to rise for many Waikato households and community organisations, responsible governance and long-term thinking matter more than ever.

I'm proud to stand with the More Grants, Discounts & Impact Team - combining proven leadership, business expertise, and a shared commitment to delivering lasting benefits for our region.

Please vote Natasha Harvey and the More Grants, Discounts & Impact Team.



Jan JOHNSTON

Your Discounts Team

In 2020, you elected the Bring Back Discounts team onto the WEL Energy Trust because discounts mattered—and they still do! This year alone we have

returned \$14.5 million to customers across our region.

We remain firmly committed to protecting and continuing the discounts programme, ensuring real value for households and businesses in our community, especially as cost pressures continue to rise.

We also support a strong grants programme, funded through trust investments that benefit the wider community. However, this must not come at the expense of your discounts.

As part of Your Discounts Team — we bring the experience, knowledge & commitment to safeguard what matters most to you now & in the future.

A proven team you can trust — representing everyone & protecting your discounts.

Vote to re-elect Jan Johnston & the Your Discounts Team.



Jenni MURPHY-SCANLON

Originally trained in Accountancy, Jenni has extensive professional experience in business and leadership and has been active in community focused governance, including board roles such as the YWCA and Riverlea Theatre Trust.

Jenni believes WEL Energy Trust must continue to balance affordability for electricity consumers with responsible stewardship of WEL Networks Ltd, ensuring the company remains a reliable service provider, while being socially accountable and future focused. Acknowledging household power costs include fees from a range of electricity retail providers, Jenni supports collaborations and innovations that WEL Networks Ltd and WEL Energy Trust can influence, to reduce overall consumer costs. She agrees with reviewing the balance of community grants and household rebates based on evidence of outcomes.

Jenni brings transparency, competent business oversight, community connection and a focus on smart energy solutions, delivering long-term value for the Waikato.

Email: jenni4weltrust@gmail.com



Kesh NAIDOO-RAUF

More Grants, Discounts & Impact

MBA BPharm MInstD

Do you want More Discounts, More Grants and More Impact?

I'm Kesh Naidoo-Rauf; a mum, pharmacist, business owner and experienced governor. Hamilton Kirikiriroa welcomed me and my family; this is home. I care deeply for our children's future and the city we leave them.

I believe in creating the best possible opportunities for everyone – regardless of age or ethnicity. I can't promise to change the world, but I promise to listen, absorb information, ask questions and work hard for you. I genuinely care and help people for a living.

As a former Hamilton City Councillor, I led the Community and Grants portfolios. I understand the unique pressures facing our different communities - organisations, sport and cultural groups, facilities and parks, struggling households and inequities across the city.

I've the skillset needed to strike a balance between More Discounts and More Grants, ultimately leading to More Impact.



Jenny NAND

There is ongoing discussion about how the WEL Energy Trust should balance community grants and customer discounts. Rising energy costs and the broader cost of living crisis are placing increasing pressure on households, while community organisations are also finding it harder to sustain essential services. I believe both priorities are important. Customers need relief on power bills, and community groups need reliable funding to keep supporting our region.

Achieving this balance requires clear communication, transparency in decision-making, and a long-term perspective that considers future needs.

My experience reflects this balanced approach. I bring a background in local and central government, strong financial capability, and extensive business experience. Working for a Crown entity in Hamilton has further strengthened my understanding of responsible investment and public accountability.

I hold governance roles, am a member of the Institute of Directors, and work collaboratively across perspectives to support fair, future-focused outcomes for the Waikato.



Jacob QUINN

Increase Discounts & Grants

I joined the Increase Discounts & Grants team to support residents and businesses by strengthening the discount scheme and increasing investment in community projects through grants. With ongoing economic and social pressures, the discount provides relief where it's needed most, while grants help build a vibrant community.

I bring a strong mix of governance experience and leadership in both the public and private sectors. I manage communications at a large primary sector organisation and have worked on major infrastructure projects in the Waikato. I've held executive leadership roles in local government, served as a trustee of Trust Waikato, and worked in the Beehive and internationally with the United Nations.

Having lived most of my life in the Waikato, I'm proud to be raising my children here. I value our region's philanthropic spirit and will work to ensure funding is fair, transparent, and delivers real impact.

Vote Jacob Quinn.



Daniel SHORE

I bring a practical, governance focused approach aimed at delivering real benefits for households and our wider community.

My priorities are clear: Maximising rebates available to households; Backing those who are doing the hard work of supporting others and strengthening our communities; Ensuring robust, strategic decision making that delivers the best possible outcomes.

I have extensive governance experience across the not for profit and sporting sectors. That experience has given me first hand insight into both the pressures the not for profit sector faces, but also the outcomes that can be achieved with the right resources.

As a born and bred Hamiltonian, I have spent the past 20 years at McCaw Lewis Lawyers, where I lead the Dispute Resolution Team. My professional focus is on strategic thinking and sound judgement — skills I would bring to the WEL Energy Trust.



Matt SILVERTON

Your Discounts Team

WEL Networks is your company - with its lines charges coming out of your pocket. Our focus is simple: return as much as possible back to you.

Since 2020, our team has delivered on that commitment by bringing back the Discount, returning \$14.5 million to consumers this year alone. We've proven we do what we say we'll do.

Over this time, support through community grants has also increased. This will continue via the returns achieved from the Trusts significant investment portfolio.

However, with power prices increasing (largely outside the Trust control), protecting the Discount is more important than ever. Experience matters in ensuring this continues.

As a local business owner and the Institute of Directors 'Emerging Director of the Year', I will continue to bring practical experience and good governance to the role.

I'd appreciate your support to continue delivering results for our community as part of Your Discounts Team.



Paula SOUTHGATE

Independent

I believe the role of the WEL Energy trustees is to balance affordable, sustainable energy with strong support for communities. I support responsible investment that protects the Fund, the WEL Networks, delivers fair benefits to beneficiaries, and creates meaningful and impactful community outcomes now and into the future.

I support a balanced approach between customer rebates and community grants, recognising the importance of both energy affordability and long-term investment in community wellbeing. I strongly value community groups and volunteers who add significant additional value through their commitment and service to others. I support partnerships with other key organisations, stakeholders and iwi to achieve stronger outcomes for all.

With over 30 years of governance experience, I offer strategic leadership, strong financial oversight, and a deep understanding of the Waikato community; its needs, and opportunities. I am passionate about fair and affordable energy prices, encouraging sustainable energy initiatives and community support.



Angela STRANGE

Increase Discounts & Grants

I joined the Increase Discounts & Grants team to ensure households, businesses and communities are supported through this financially challenging time.

As a Chartered Director with significant governance experience across multiple sectors, I bring a disciplined, strategic approach, grounded in sound judgement and practical delivery. I'm committed to prudent financial management, ensuring that every decision reflects both immediate needs and long-term sustainability.

I support increasing discounts, providing timely relief to households facing rising costs, while providing targeted grants that strengthen our nonprofit sectors. This requires careful stewardship of resources, a focus on value for money, and alignment between strategy and decision-making. I'll encourage collaboration with other funding partners to maximise impact.

By taking a measured and financially responsible approach, I believe increasing both discounts and grants will give relief to households while investing in communities that are resilient, safe and supportive.



Roger STRATFORD

These WEL Energy Trust Elections in 2026 will determine the future economic direction of the Waikato region. As a prospective Trustee, Roger supports retention of the discount programme along with a reasonable level of distributions going toward deserving regional not-for-profit groups. Community grants should be paid for through consumers' electricity bills.

If elected, Roger will amend the Community Investment Strategy to include Incorporated Societies as a beneficiary for grants. Political activist groups should become eligible. Widespread public consultation is required to meet community expectations. As a Trustee, Roger will make himself visible to lobby groups as well as to news media.

Electricity users' bill payments are not a bank account to dip into. Each Trustee is accountable for the value of grant distributions.

The Your Discounts Team has failed to rollback virtue signalling priorities. Vote Roger Stratford onto the WEL Energy Trust to take back control of the public interest.



Jamie TOKO

As a dedicated community leader with extensive experience serving on both the regional and national committees of the COGS network, I am honoured to serve as COGS National Chair. I also serve as Chair of the Western Community Centre, supporting initiatives that strengthen community connection, wellbeing, and opportunities for local whanau. In recognition of my commitment to community service, I was awarded the Hamilton City Civic Award and have proudly served as a Justice of the Peace for 15 years. My passion for grassroots community work is driven by my desire to empower people, build inclusive and resilient communities, and create positive outcomes across our region. I am deeply grateful to WEL Energy Trust for their continued support of community initiatives and their investment in strengthening our communities for future generations, I will be committed and serve with integrity.



Kate VAN DEN BERG

Originally from North West England, I have called Hamilton home since moving to the Mighty Waikato in 2007. It's where I met my husband and where we are raising our two children. Weekends are usually spent cheering from court and field sidelines.

I am a Chartered Accountant and with over 20 years' experience in finance roles and a strong background in the energy sector, I bring both commercial expertise and industry knowledge, having worked for two electricity network distribution companies.

Community connection is important to me, shaped by my upbringing in a small village. In New Zealand, I have been actively involved in trusts, committees, and school PTAs, and understand the real impact that funding and support can have at a grassroots level.

I am passionate about giving back and would value the opportunity to contribute at a governance level, supporting initiatives that strengthen and benefit the wider community.



Maxine VAN OOSTEN

Hamilton has been my home for almost 40 years. It's where my husband and I raised our family, built strong community connections, and now support our daughter to raise hers. I care deeply about the future of our region and the wellbeing of people who live here.

I bring extensive governance, advocacy and leadership experience to this role. I served six years as a Hamilton City Councillor, including as Chair of the Finance and Monitoring Committee. I worked to strengthen public understanding and trust in council spending and priorities. Before local government, I spent 15 years as a worker advocate, including seven years with NZEI Te Riu Roa, representing and supporting working people and their families.

WEL Energy Trust has a strong reputation of investing back into our communities and creating positive local outcomes, and I am committed to helping ensure that continues for future generations.



Michael WEST

Your Discounts Team

In 2020 the Bring Back Discounts team reinstated your annual Electricity Discount. It wasn't without opposition and was a complex challenge. Only our knowledge and commitment made it possible.

But in 2023 we lost our majority to trustees who didn't share our commitment. At a time when electricity price rises caused stress across our community, over \$16.5M of our money was used to increase grant funding. The right thing to do would've been grow the discount and return that money to you.

Increasing Grants funding was always on our agenda, but paid for from the Trust's other investment returns, not your electricity bills.

We are now Your Discounts Team. Give us back the majority we need to grow the discount. It needs our skills and proven track record to do so.

Beware of others who lack commitment and have other agendas.

Re-elect Michael West and Your Discounts Team.

Visit yourdiscountsteam.co.nz



Ben WOODGATES

Independent

Hi, I'm Ben.

Good decisions come from a mix of voices. I'd bring a fresh, independent perspective to the table.

As a young Hamiltonian building my life here, I'll be living with the long-term impacts of today's decisions. With one of your votes, you can introduce a different voice and enable better representation of our community.

I started Hello Hamilton, a platform connecting 35,000+ locals with what's happening every week. I see the pressures people are facing - the cost of living, fuel prices, youth unemployment. WEL must deliver meaningful discounts to support households and businesses.

Working at Gallagher, I help take Waikato technology to the world while supporting millions of dollars in local sponsorship. It's clear how important well-backed community organisations are, and WEL's grants need to deliver long-term benefits.

With technology changing fast and demand for electricity rising, responsible guardianship of our energy assets matters more than ever.



Adrian YAMUNANATHAN

Your Discounts Team

I've sat at this table before. As a WEL Energy Trustee, I helped reinstate your annual electricity discount, returning millions to Waikato households. It took

real commitment against real opposition.

Since losing our majority in 2023, Your Discounts Team couldn't hold the other trustees accountable for their promises. Over \$16.5 million of your money went to grant increases instead of growing your discount, during a time of rising power prices.

Grants matter, but they should be funded from other Trust investments, not your electricity bill. I'm running again to protect your discount, grow it, and ensure every trustee delivers on what they promise. That accountability has been missing.

Give Your Discounts Team the majority we need. Together, we'll continue the discount programme, make it better, and hold every trustee accountable for their promises. Your money. Your discount. Your grants. Vote Your Discounts Team.

Visit yourdiscountsteam.co.nz



Roderick John YOUNG

LLB, B.Sc., B.Soc.Sc.(Hons).

I'm standing to ensure your energy asset works harder for you. WEL Energy Trust exists to hold shares on behalf of

the community and deliver real benefits to customers. That means lower costs, strong dividends, and smart long-term investment.

I bring a background in science, public policy, and law, with a focus on accountability and practical results. My priority is simple: protect community ownership, strengthen oversight of WEL Networks, and ensure every dollar delivers value back to households.

I support transparent decision-making, disciplined investment, and fair distribution to customers and community projects. The Trust must remain efficient, open, and focused on outcomes that matter – resilient infrastructure, affordable power, and local benefit.

If elected, I will be an independent voice committed to clarity, accountability, and results.

Your asset. Your return. Your future.

Roderick John Young



'Here for the Community'

Mezzanine Floor, 127 Alexandra Street, Hamilton
PO Box 1336, Hamilton 3240

07 838 0093 admin@welenergytrust.co.nz

www.welenergytrust.co.nz | www.facebook.com/WelEnergyTrust