

The DECKING
COLLECTION

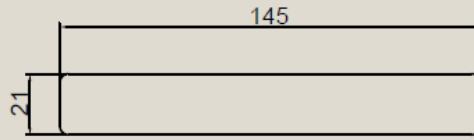
by accoya 



Technical Data Sheet

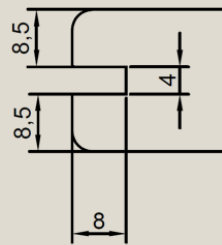
ACCOYA DECKING

MATERIAL: Solid Accoya wood
PROFILES: UN-GROOVED DECKING PROFILES



THICKNESS AND WIDTH TOLERANCES ± 1 MM

GROOVE DETAILS:



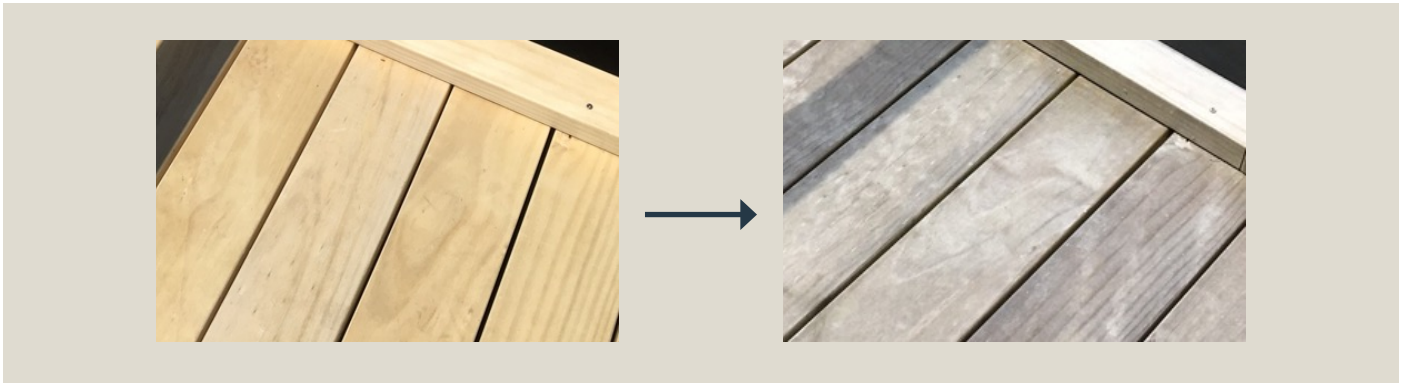
21 x 145 mm

LENGTHS: 2.4 m, 3.6 m, 4.2 m, 4.8 m & 5.4 m
DURABILITY CLASS (EN 350): 1
SURFACE: Smooth planed surface with rounded edges (3 mm)
DENSITY (AVERAGE): 515 kg/m³ (65% RH, 20°C)
WEIGHT (AVERAGE): 21 x 145 mm: 1,58 kg/linear metre
 26 x 145 mm: 1,95 kg/linear metre
BENDING STIFFNESS (EN 408): 8800 N/mm²
BRINEL HARDNESS (EN 1534): 2.4
EQUILIBRIUM MOISTURE CONTENT: 3 – 5% (65% RH, 20°C)
SHRINKAGE WET – OVEN DRY: Radial 0,7%
 Tangential 1,5%
SLIP RESISTANCE (EN 16165): Class C
FIXING COMPATIBILITY: Always use Stainless Steel (304 and 316 grade)

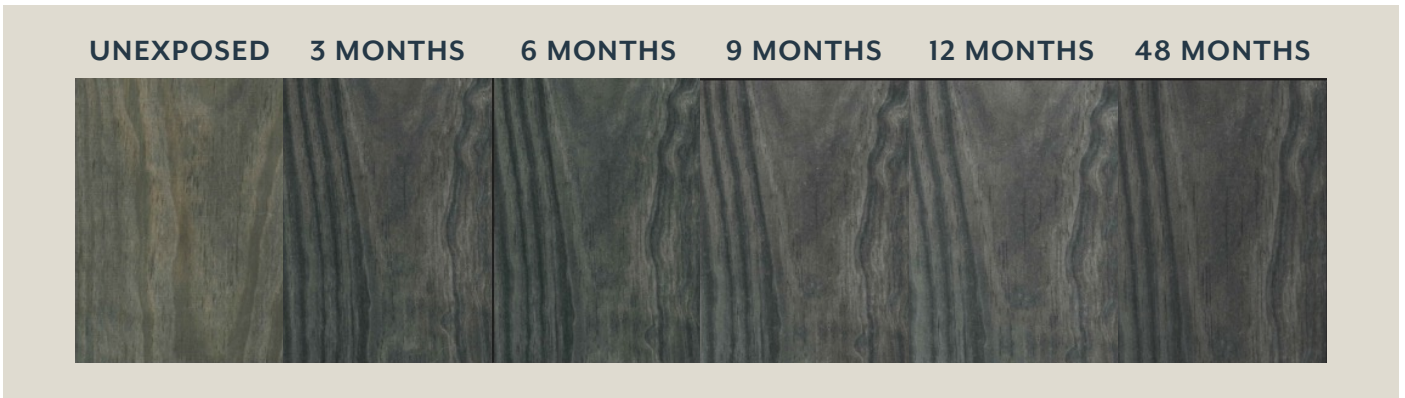
WEATHERING:

Natural Accoya deck boards will weather naturally to a silver-grey color tone. Variations on the weathering process and final appearance are dependant on local environmental and building conditions: In rare cases sticker marks can be seen on 21 mm natural Accoya deck boards.

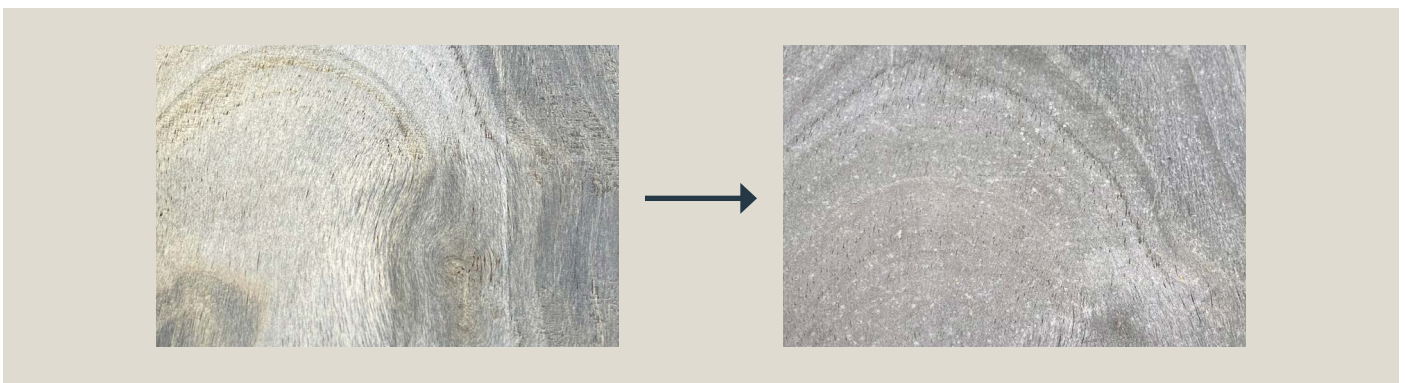
These will fade when exposed to UV.



Accoya Color provides a durable and more uniform appearance through the range of weathering than other wood deck options. It is advised to mix and match boards before installation to provide an aesthetically pleasing mix of shades.



Any white patches on Accoya Color will weather to a grey colour tone over time.



Despite being exceptionally dimensionally stable, surface checking can occur on some boards though the surface will remain smooth and extremely resistant to splintering.