

The DECKING
COLLECTION

by accoya 



Technical Data Sheet

ACCOYA® DECKING

TECHNICAL DATA SHEET

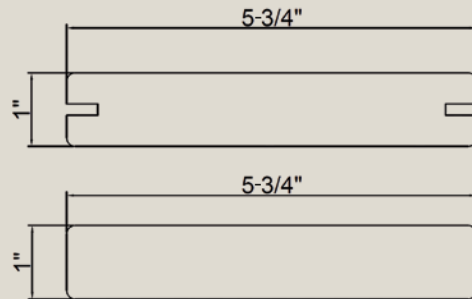
ACCOYA DECKING

The DECKING COLLECTION

by accoya 

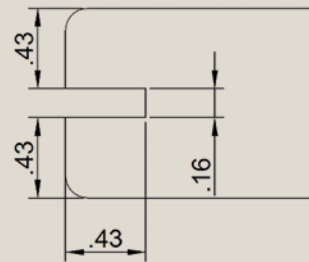
MATERIAL: Solid Accoya wood

PROFILES: GROOVED AND UN-GROOVED DECKING PROFILES



THICKNESS AND WIDTH TOLERANCES $\pm 3/64$ "

GROOVE DETAILS:



1" x 5-3/4"

LENGTHS: 8ft, 12ft, 14ft, 16ft

DURABILITY TEST (AWPA E7 & E10): >9 (Average)

SURFACE: Smooth planed surface with rounded edges (1/8")

DENSITY (AVERAGE): 32 PCF (65% RH, 20°C)

WEIGHT (AVERAGE): 1.34 LB/FT

BENDING STIFFNESS (ASTM D143): 13.144 PSI

JANKA HARDNESS (ASTM D143): side = 922 LBF, end grain = 1484 LBF

EQUILIBRIUM MOISTURE CONTENT: 3 – 5% (65% RH, 20°C)

SHRINKAGE WET – OVEN DRY: Radial 0.7%

Tangential 1.5%

FASTENER COMPATIBILITY: Always use Stainless Steel (304, 316)

TECHNICAL DATA SHEET

ACCOYA DECKING

The DECKING COLLECTION

by accoya 

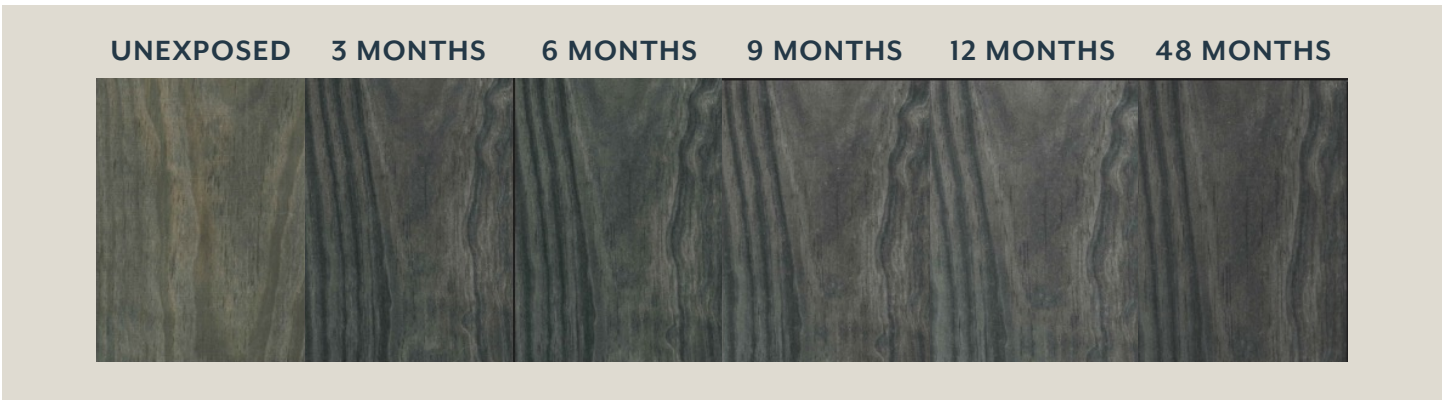
WEATHERING:

Natural Accoya deck boards will weather naturally to a silver-grey color tone. Variations on the weathering process and final appearance are dependant on local environmental and building conditions: In rare cases sticker marks can be seen on 3/4" natural Accoya deck boards.

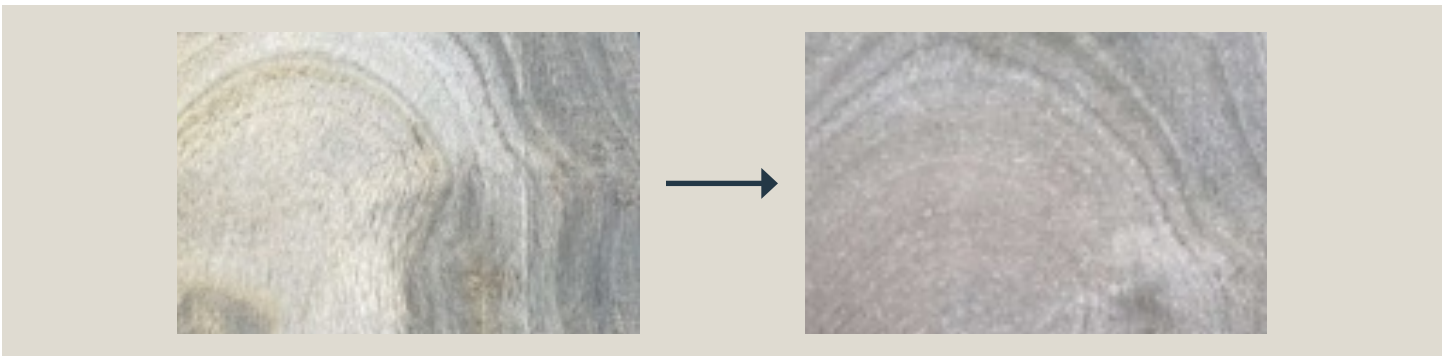
These will fade when exposed to UV.



Accoya Color provides a durable and more uniform appearance through the range of weathering than other wood deck options. It is advised to mix and match boards before installation to provide an aesthetically pleasing mix of shades.



Any white patches on Accoya Color will weather to a grey color tone over time.



Despite being exceptionally dimensionally stable, surface checking can occur on some boards though the surface will remain smooth and extremely resistant to splintering.

The DECKING
COLLECTION

by accoya 



GET INSPIRED AT
ACCOYA.COM