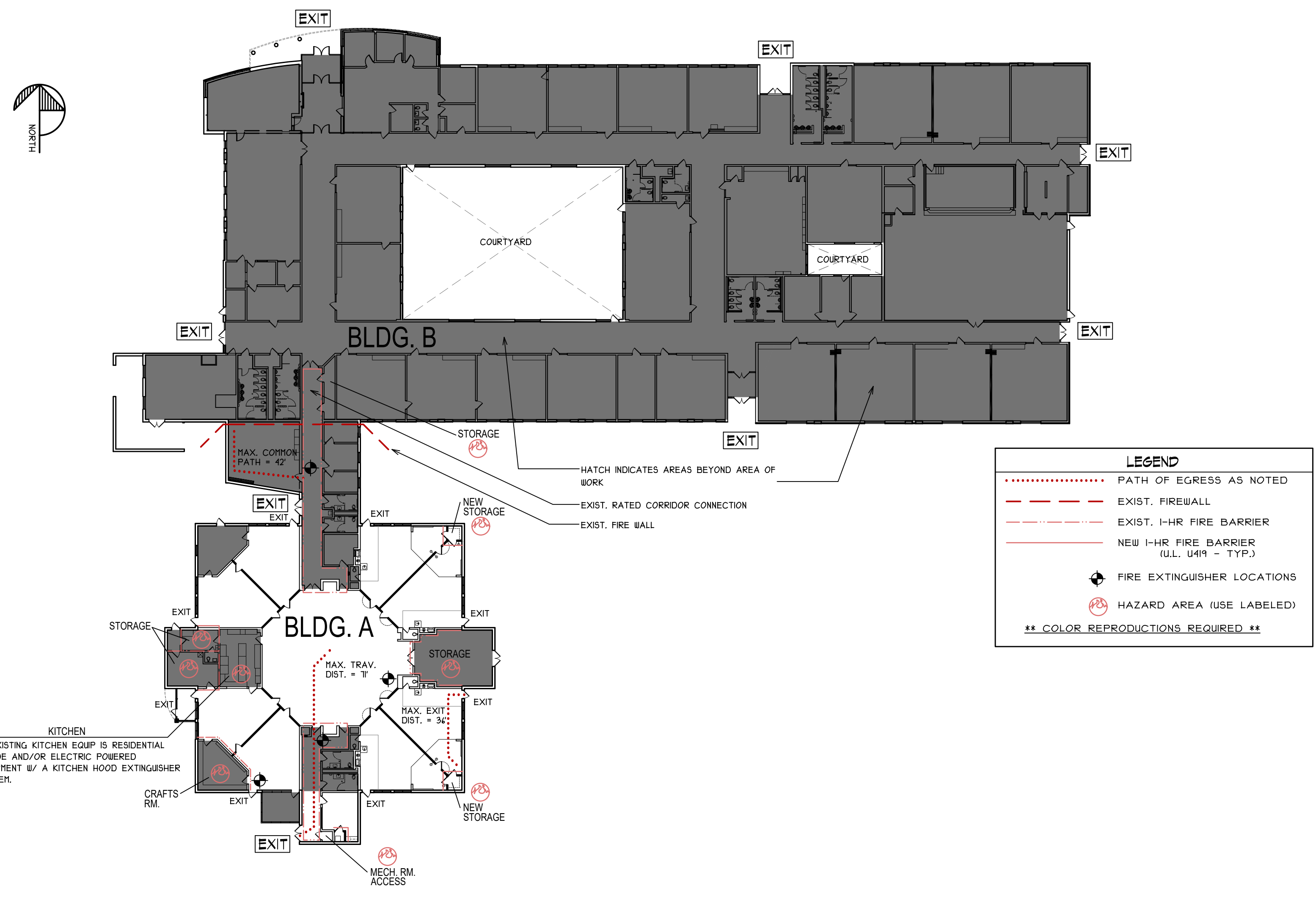


FILE LOCATION: H:\25004 - BAS Hsc Services\PROJECTS\MILLER BLDG\25004-Miller - A1.dwg  
 DATE PLOTTED: 11/5/2025  
 COPYRIGHT © 2025  
 LINDHOUT ASSOCIATES architects pc  
 THIS DOCUMENT AND THE SUBJECT MATTER CONTAINED THEREIN IS PROPRIETARY AND IS NOT TO BE USED OR REPRODUCED WITHOUT PRIOR WRITTEN APPROVAL



**PROJECT NARRATIVE**

THIS PROJECT IS FOR RE-OCCUPANCY & CHANGE OF USE OF BAS'S MILLER BUILDING'S SOUTH WING FOR CHILD-CARE USE. PREVIOUS USE WAS AS A SENIOR CENTER. THE NORTH BUILDING IS SEPARATED, ALREADY CERTIFIED, AND OCCUPIED FOR CHILD-CARE USE. THIS PROJECT CONSISTS OF REMOVING EXISTING OPERABLE PARTITIONS THROUGHOUT THE SOUTH WING OF THE FACILITY. NEW PERMANENT WALLS AND DOORS ARE TO REPLACE THE REMOVED PARTITIONS. SOME MINOR MILLWORK AND SINKS ARE BEING INSTALLED AS WELL. ALL ROOMS USED FOR INSTRUCTION & STUDENT OCCUPANCY HAVE AN EXISTING EXIT DOOR OPENING DIRECTLY TO THE EXTERIOR (CORRIDORS ARE NOT REQ'D TO BE RATED). THESE ALTERATIONS DO NOT AFFECT EXISTING EGRESS. EXISTING BUILDING SIZE AND CONSTRUCTION TYPE TO REMAIN UNCHANGED AS WELL. THIS WORK IS CLASSIFIED AS A CHANGE OF OCCUPANCY AND LEVEL 2 ALTERATIONS UNDER THE MICHIGAN REHABILITATION CODE, 205. THE BUILDING IS NON-SPRINKLERED.

**APPLICABLE CODES**

- 2021 MICHIGAN BUILDING CODE
- 2021 MICHIGAN REHABILITATION CODE FOR EXISTING BUILDINGS - LEVEL 2
- 2021 NFPA 101
- 2019 LICENSING RULES FOR CHILD CARE CENTERS, PART 8 - FIRE SAFETY
- 2021 ICC A111 STANDARD FOR ACCESSIBLE BUILDINGS AND FACILITIES
- 2021 MICHIGAN PLUMBING CODE
- 2021 MICHIGAN MECHANICAL CODE
- 2022 NATIONAL ELECTRICAL CODE (STATE OF MI ELECTRICAL CODE W/ MI AMENDMENTS)

\*\* BLDG. SHALL BE PROTECTED THROUGHOUT W/ AN APPROVED FIRE ALARM & DETECTION SYSTEM PER SECTION 901.1 NFPA-12. OWNER TO PROVIDE FIRE ALARM SYSTEM DRAWINGS TO B'S FOR REVIEW/APPROVAL \*\*

**EXISTING BUILDING INFORMATION**

EXISTING CONSTRUCTION TYPE: TYPE IIB  
 EXISTING USE GROUP: 'E' - EDUCATIONAL  
 \*\* THE SOUTH WING INCLUDES OCCUPANTS UNDER 2 1/2 YRS. ALL CHILD OCCUPIED ROOMS EXIT DIRECTLY TO THE EXTERIOR. \*\*

EXISTING HEIGHT: 1 STORY, 22 FT.  
 EXISTING TOTAL AREA: 57,850 S.F.  
 \*\* EXIST. FACILITY IS SEPARATED INTO TWO BLDG'S W/ RATED FIRE WALL \*\*

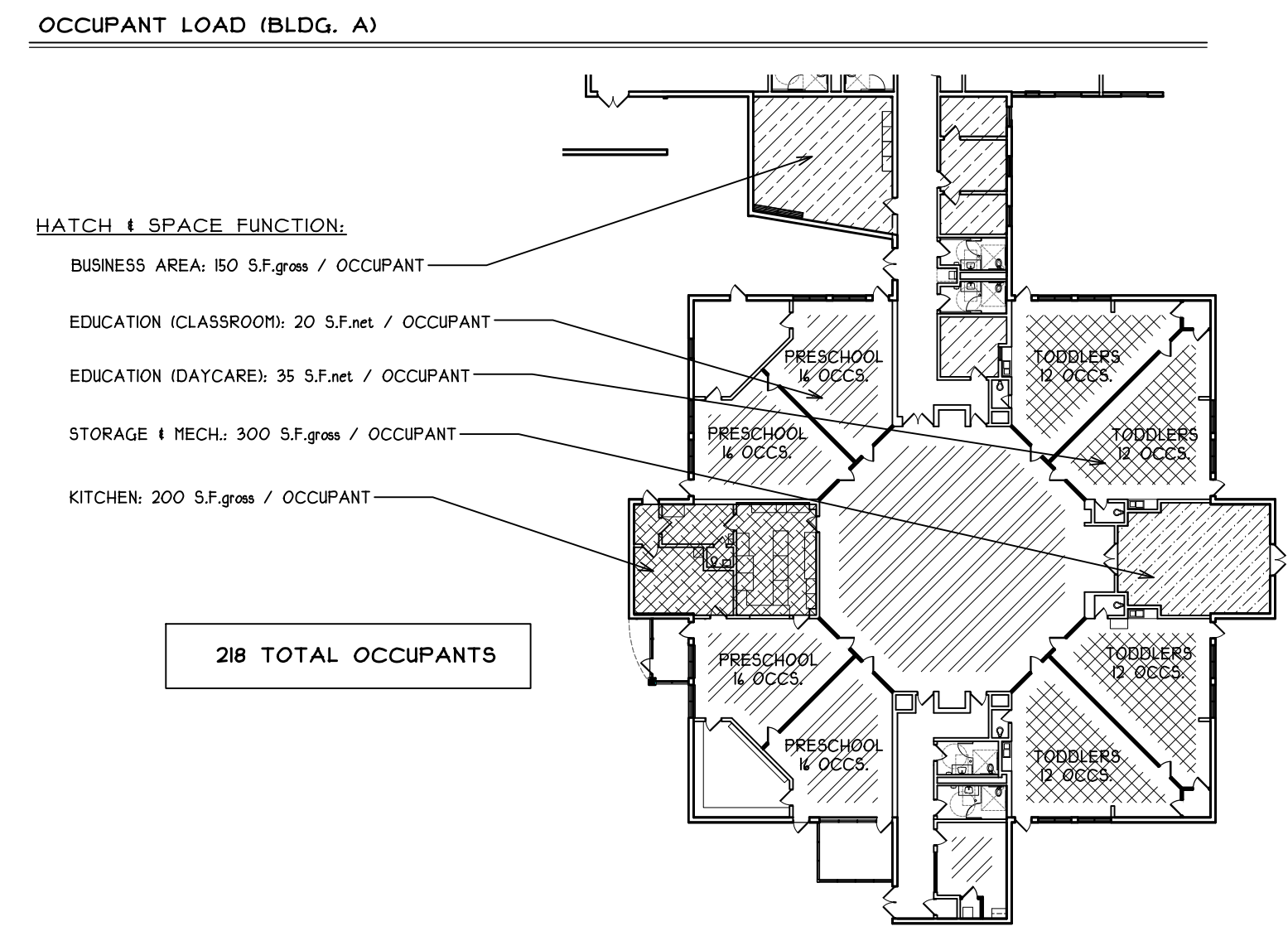
BLDG. B	43,584 S.F.
BLDG. A (AREA OF WORK)	14,266 S.F.

**FIRE RESISTANCE RATING - TYPE IIB CONSTRUCTION**

STRUCTURAL FRAME	0 HRS.
INT./EXT. BEARING WALLS	0 HRS.
INT./EXT. NON-BEARING WALLS	0 HRS.
FLOOR CONSTRUCTION	0 HRS.
ROOF CONSTRUCTION	0 HRS.
CORRIDOR WALLS	0 HRS. (CLASSROOMS OPEN DIRECTLY TO OUTSIDE)
APPLICABLE INCIDENTAL USE AREAS (MBC)	1 HR.
APPLICABLE STORAGE AREAS (NFPA)	1 HR.
ALL STORAGE AREAS (PART 8 LICENSING-RULES)	1 HR. (OVER 100 S.F.) + 45 MIN. DRS 1 HR. (UNDER 100 S.F.) + 20 MIN. DRS

**PLUMBING FIXTURE REQUIREMENTS, PER MICHIGAN LABOR PLUMBING CODE, TABLE 403.1**

	WC's	UR's	LAV's
TOTAL REQ'D (218 OCCS):	5	5	5
TOTAL PROVIDED (EXISTING):	9	5	5

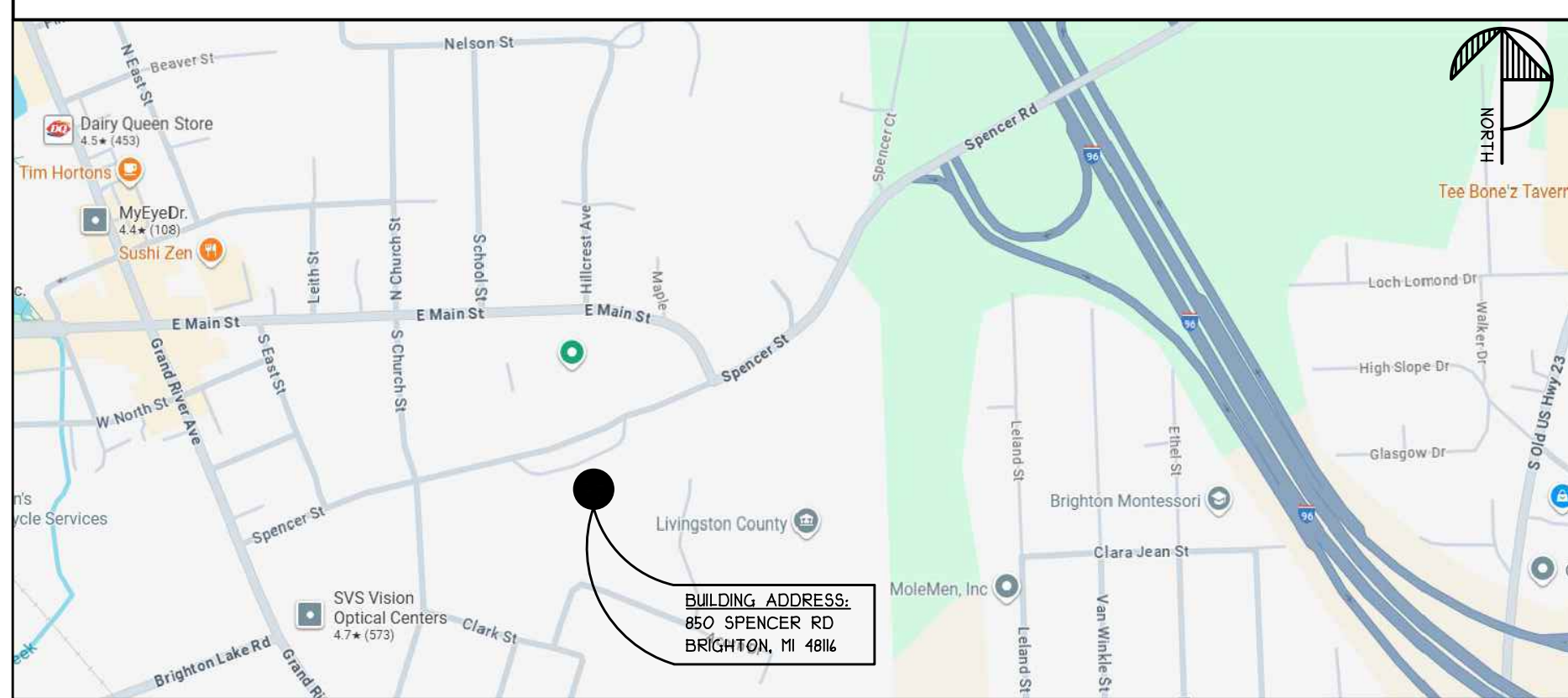


**EXISTING EGRESS COMPONENTS (BLDG. A)**

MIN. ALLOWABLE EXITS	2
EXISTING EXITS	2
MIN. ALLOWABLE DOOR WIDTH	32"
EXISTING MIN. DOOR WIDTH	34.5"
MIN. ALLOWABLE DOOR WIDTH	32"
EXISTING MIN. DOOR WIDTH	34.5"
MAX. EXIT ACCESS TRAVEL DISTANCE	200' (M.B.C.) 150' (N.F.P.A.)
PROPOSED EXIT ACCESS TRAVEL DISTANCE	71'
MAX. EXIT DIST W/IN RM TO EXIT	100' - PRESCHOOLERS (C.C.C.L.R.S.) 50' - TODDLERS (C.C.C.L.R.)
PROPOSED EXIT DIST W/IN RM TO EXIT	34'
MAX. ALLOWABLE COMMON PATH OF TRAVEL	75' (M.B.C.) 75' (N.F.P.A.)
PROPOSED COMMON PATH OF TRAVEL	42'
MAX. DEAD END CORRIDOR	50' (M.B.C.) 20' (N.F.P.A.)
PROPOSED DEAD END CORRIDOR	0'

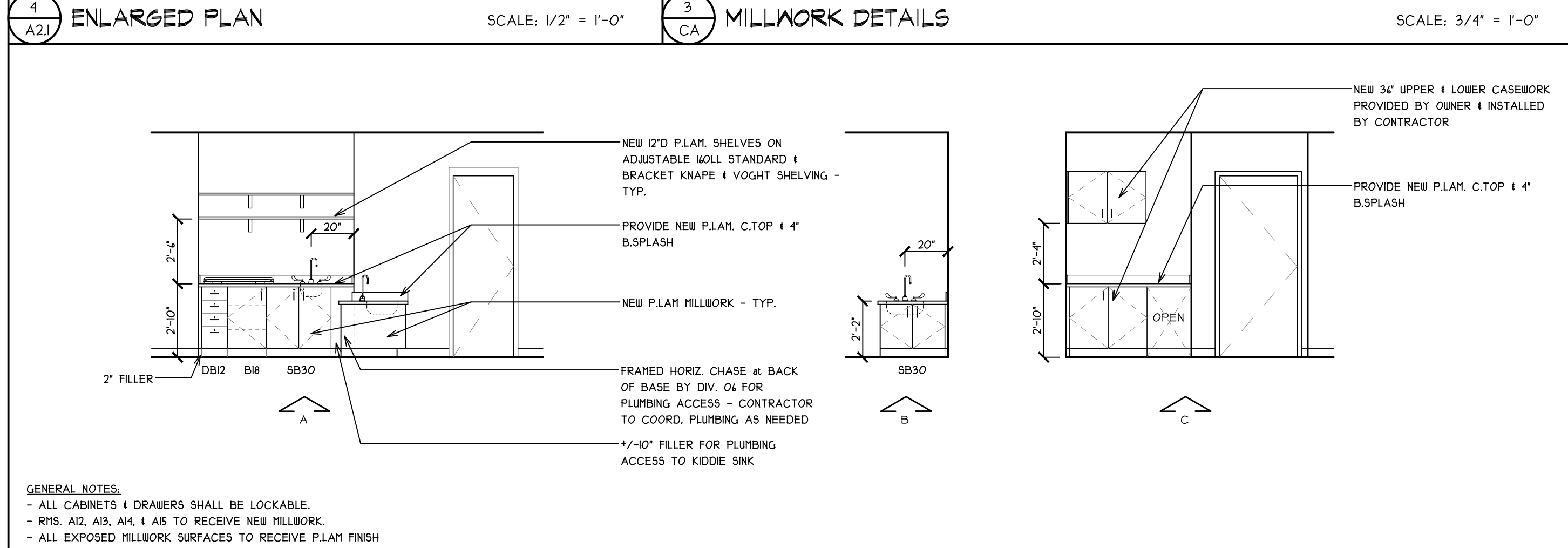
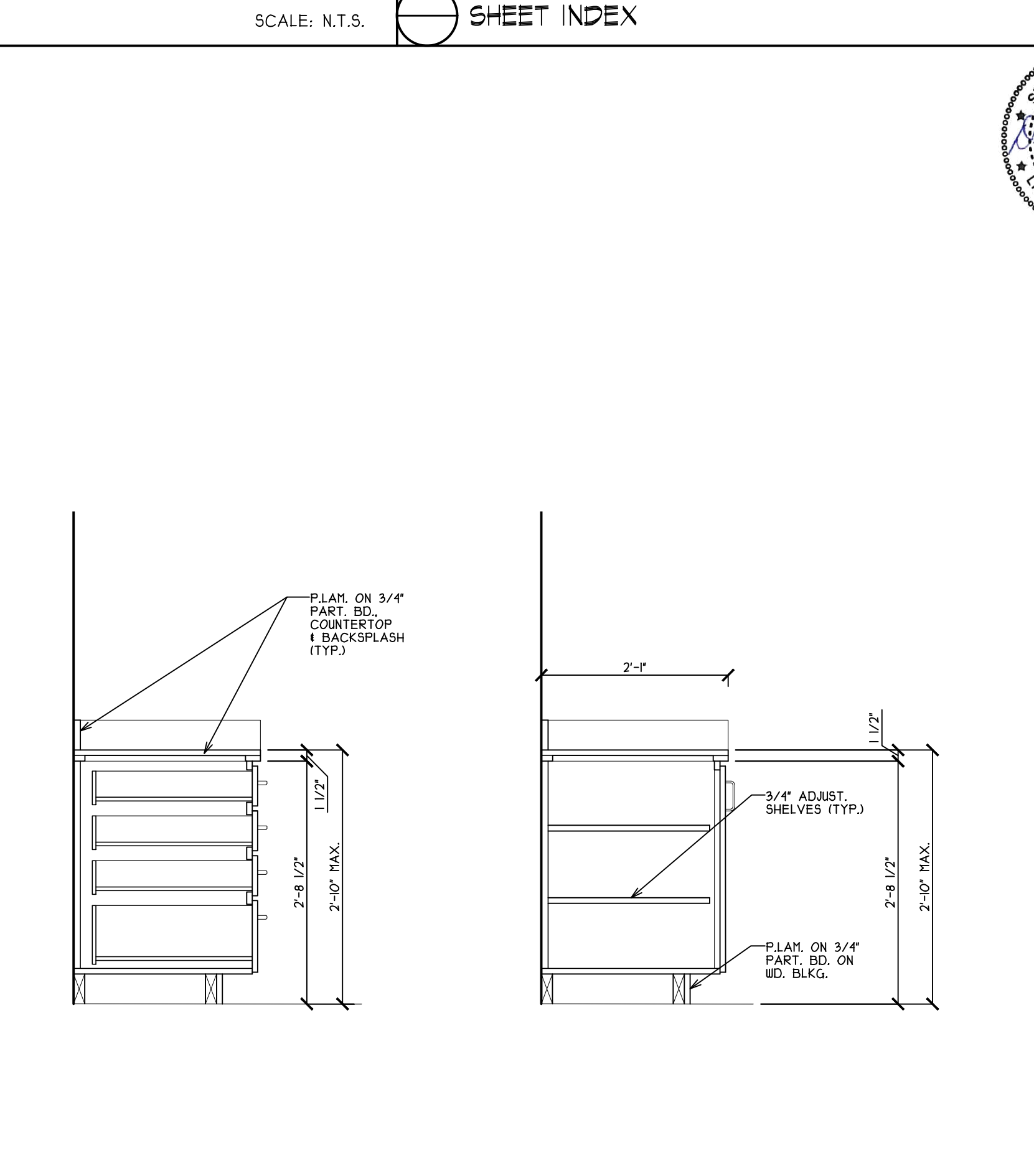
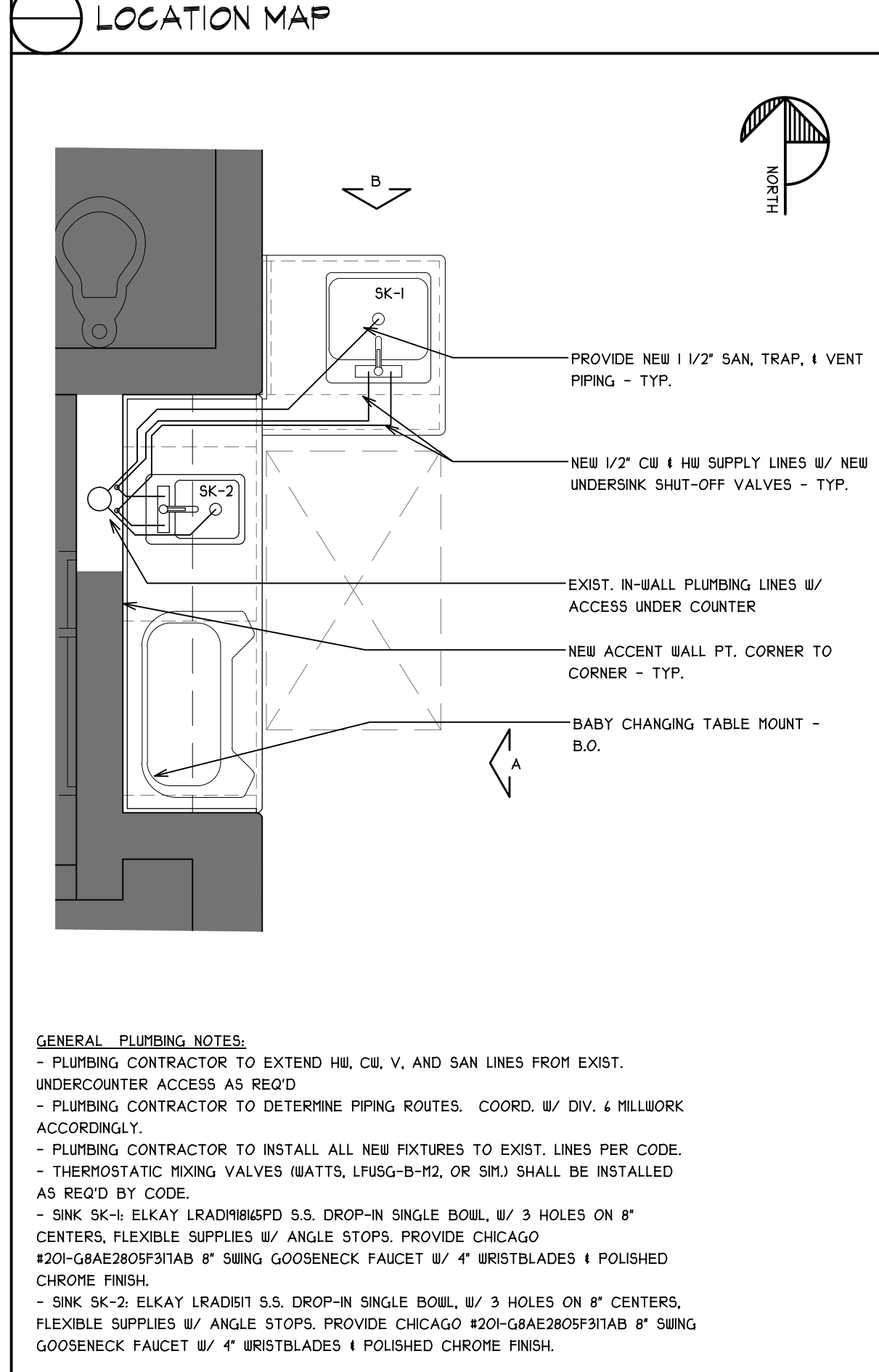
# BRIGHTON AREA SCHOOLS

## MILLER BLDG - PRE-SCHOOL AND DAY CARE PROGRAMS



CA COVER & CODE  
 A1.1 DEMO & REFL. CLG. PLAN  
 A2.1 ENLARGED PLAN & DETAILS

**SHEET INDEX**

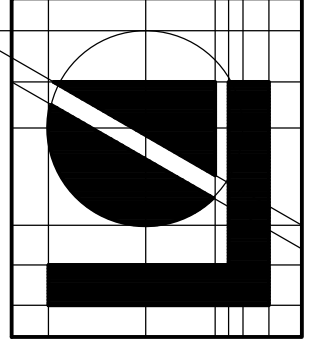


**1 CA CODE INFORMATION & EGRESS PLAN**

SCALE: 1/32" = 1'-0"

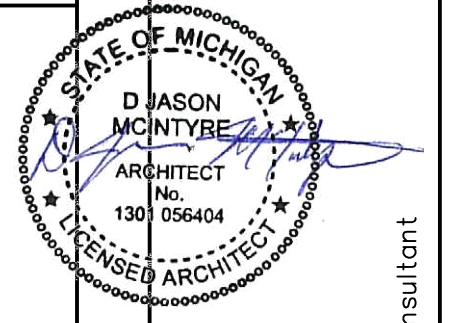
**2 CA INTERIOR ELEVATIONS**

SCALE: 1/4" = 1'-0"



**Lindhout Associates**  
 architects aia pc

10466 clinton drive, brighton, michigan 48116-9510  
 www.lindhout.com fax (810)227-5655 (810)227-5688



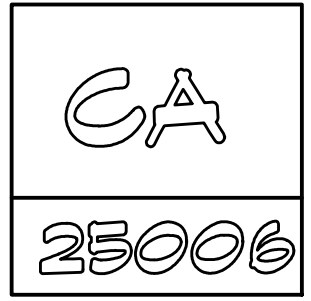
BIDS & PERMITS  
 OWNER REVIEW  
 issued for

DATE: 11.5.2025  
 DATE: 10/11/2025

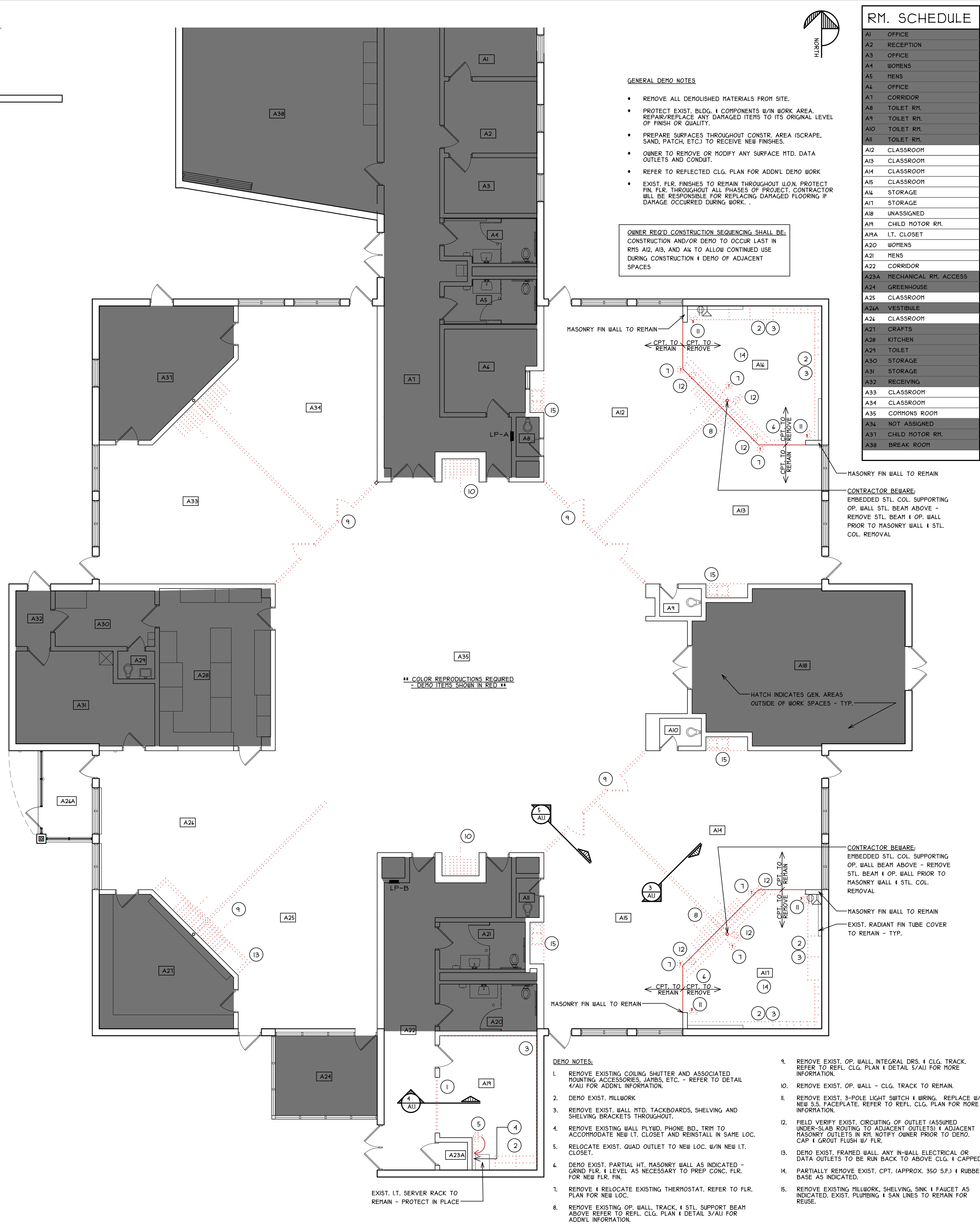
APP'D: [Signature]

RENOVATIONS for:  
**BRIGHTON AREA SCHOOLS**  
 - MILLER BLDG  
 BRIGHTON, MICHIGAN

**COVER & CODE**



FILE LOCATION: HA25004 - BAS Mkr ServicesPROJECTSMILLER BLDG12500C-Miller - A1.dwg  
 DATE PLOTTED: 11/5/2025  
 PLOTTED BY: jason mcintyre  
 LINDHOUT ASSOCIATES architects pc  
 THIS DOCUMENT AND THE SUBJECT MATTER CONTAINED THEREIN IS PROPRIETARY AND IS NOT TO BE USED OR REPRODUCED WITHOUT PRIOR WRITTEN APPROVAL.



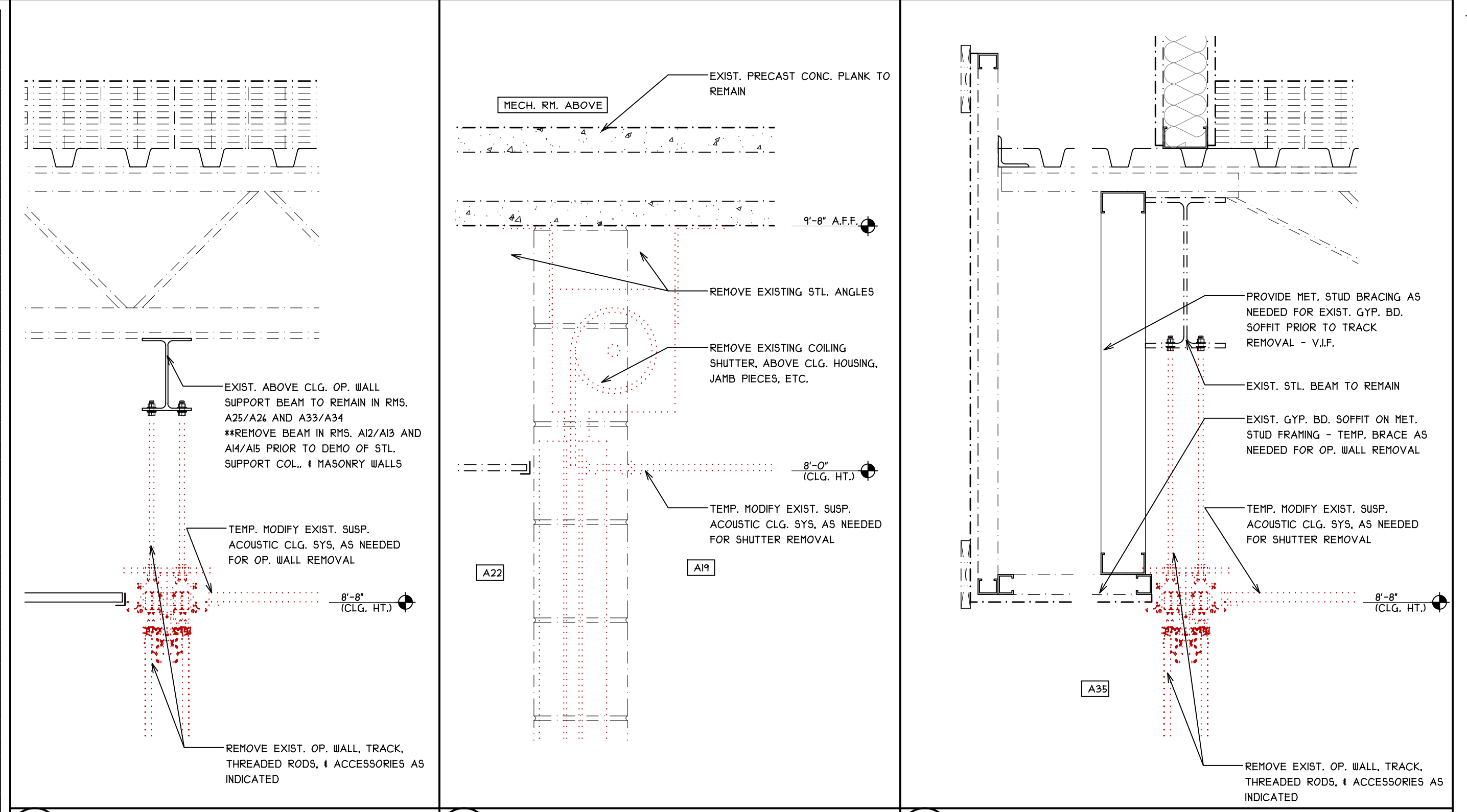
RM. SCHEDULE	
A1	OFFICE
A2	RECEPTION
A3	OFFICE
A4	WOMENS
A5	MENS
A6	OFFICE
A7	CORRIDOR
A8	TOILET RR.
A9	TOILET RR.
A10	TOILET RR.
A11	TOILET RR.
A12	CLASSROOM
A13	CLASSROOM
A14	CLASSROOM
A15	CLASSROOM
A16	STORAGE
A17	STORAGE
A18	UNASSIGNED
A19	CHILD MOTOR RR.
A19A	LT. CLOSET
A20	WOMENS
A21	MENS
A22	CORRIDOR
A23A	MECHANICAL RM. ACCESS
A24	GREENHOUSE
A25	CLASSROOM
A26A	VESTIBULE
A26	CLASSROOM
A27	CRAFTS
A28	KITCHEN
A29	TOILET
A30	STORAGE
A31	STORAGE
A32	RECEIVING
A33	CLASSROOM
A34	CLASSROOM
A35	COMMONS ROOM
A36	NOT ASSIGNED
A37	CHILD MOTOR RR.
A38	BREAK ROOM

- GENERAL DEMO NOTES**
- REMOVE ALL DEMOLISHED MATERIALS FROM SITE.
  - PROTECT EXIST. BLDG. I COMPONENTS W/IN WORK AREA. REPAIR/REPLACE ANY DAMAGED ITEMS TO ITS ORIGINAL LEVEL OF FINISH OR QUALITY.
  - PREPARE SURFACES THROUGHOUT CONSTR. AREA (SCRAPE, SAND, PATCH, ETC.) TO RECEIVE NEW FINISHES.
  - OWNER TO REMOVE OR MODIFY ANY SURFACE MTD. DATA OUTLETS AND CONDUIT.
  - REFER TO REFLECTED CLG. PLAN FOR ADDNL DEMO WORK.
  - EXIST. FLR. FINISHES TO REMAIN THROUGHOUT W/O.N. PROTECT FIN. FLR. THROUGHOUT ALL PHASES OF PROJECT. CONTRACTOR WILL BE RESPONSIBLE FOR REPLACING DAMAGED FLOORING IF DAMAGE OCCURRED DURING WORK.

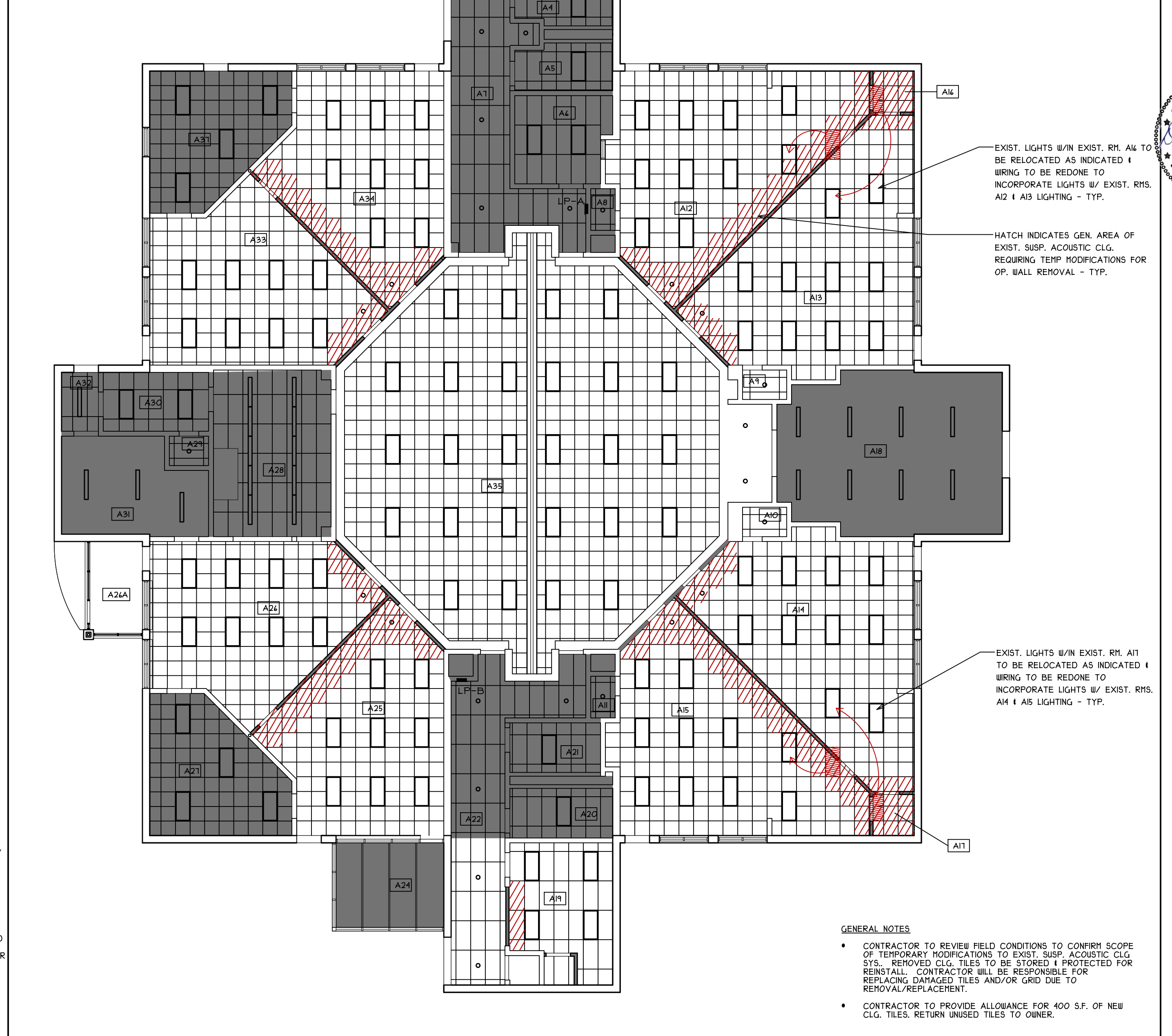
OWNER REQ'D CONSTRUCTION SEQUENCING SHALL BE: CONSTRUCTION AND/OR DEMO TO OCCUR LAST IN RMS A12, A13, AND A14 TO ALLOW CONTINUED USE DURING CONSTRUCTION I DEMO OF ADJACENT SPACES

\*\* COLOR REPRODUCTIONS REQUIRED - DEMO ITEMS SHOWN IN RED \*\*

**1 DEMO PLAN** SCALE: 1/8" = 1'-0"

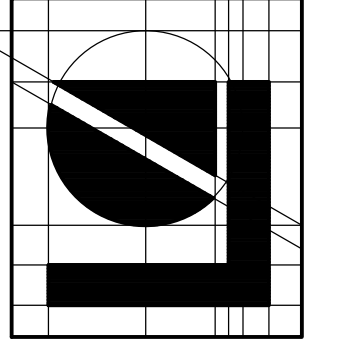


**3 DEMO DETAIL** SCALE: 1/2" = 1'-0"  
**4 DEMO DETAIL** SCALE: 1/2" = 1'-0"  
**5 DEMO DETAIL** SCALE: 1/2" = 1'-0"



- GENERAL NOTES**
- CONTRACTOR TO REVIEW FIELD CONDITIONS TO CONFORM SCOPE OF TEMPORARY MODIFICATIONS TO EXIST. SUSP. ACOUSTIC CLG. SYS. REMOVED CLG. TILES TO BE STORED I PROTECTED FOR REINSTALL. CONTRACTOR WILL BE RESPONSIBLE FOR REPLACING DAMAGED TILES AND/OR GRID DUE TO REMOVAL/REPLACEMENT.
  - CONTRACTOR TO PROVIDE ALLOWANCE FOR 400 S.F. OF NEW CLG. TILES. RETURN UNUSED TILES TO OWNER.

**2 REFLECTED CEILING PLAN** SCALE: 3/32" = 1'-0"



**Lindhout Associates**  
 architects aia pc  
 10466 clinton drive brighton, michigan 48116-9510  
 www.lindhout.com fax (810)227-5855 (810)227-5688

ARCHITECT  
 No. 1301186404  
 LICENSED ARCHITECT



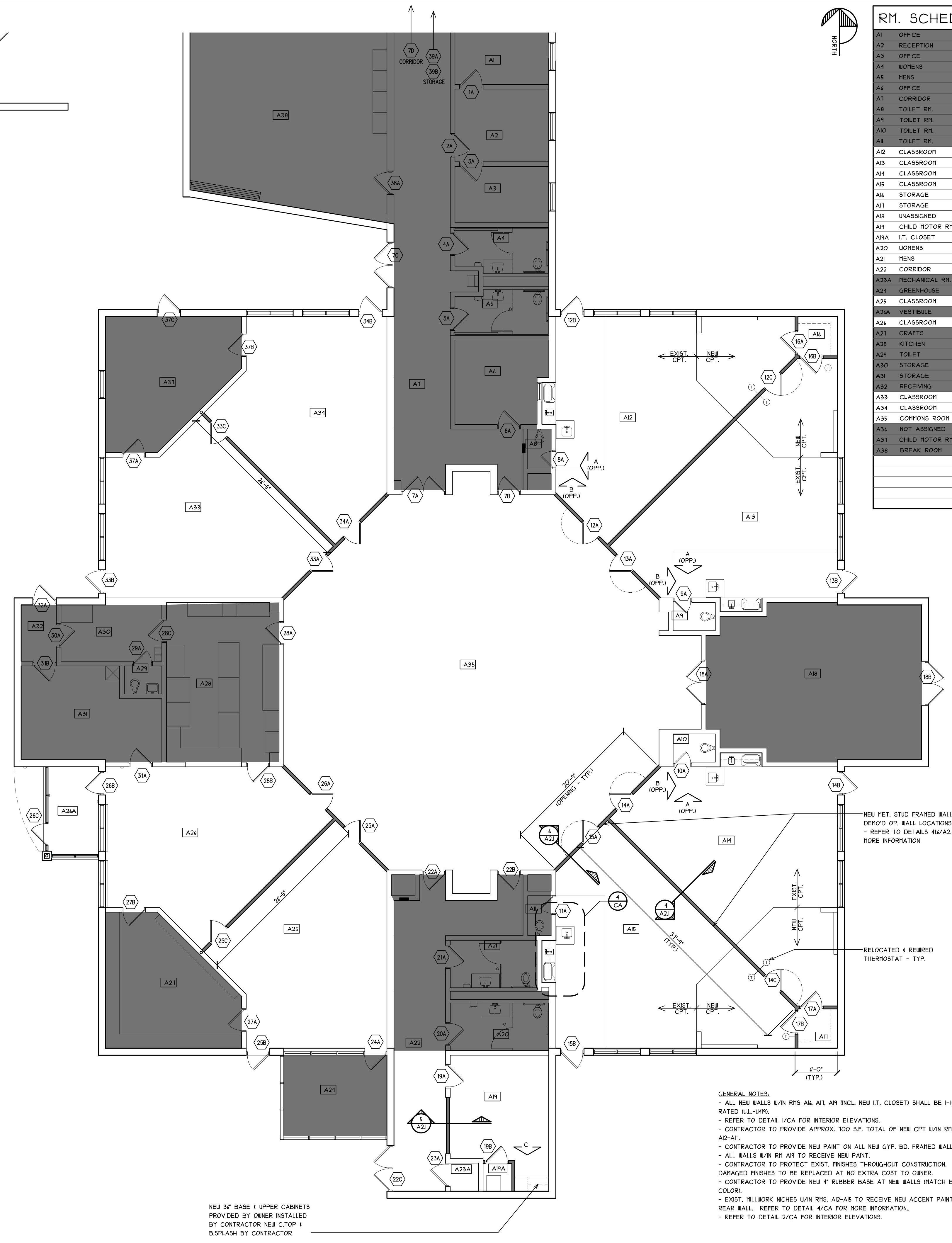
BIDS I PERMITS  
 OWNER REVIEW  
 issued for

DATE: 11/5/2025  
 DATE: 10/11/2025  
 DATE:   
 DR:   
 CK:   
 APP'D:   
 date

REVISIONS for:  
**BRIGHTON AREA SCHOOLS**  
**- MILLER BLDG**  
 BRIGHTON, MICHIGAN  
**DEMO I REFL. CLG. PLAN**

**A1.1**  
**25006**

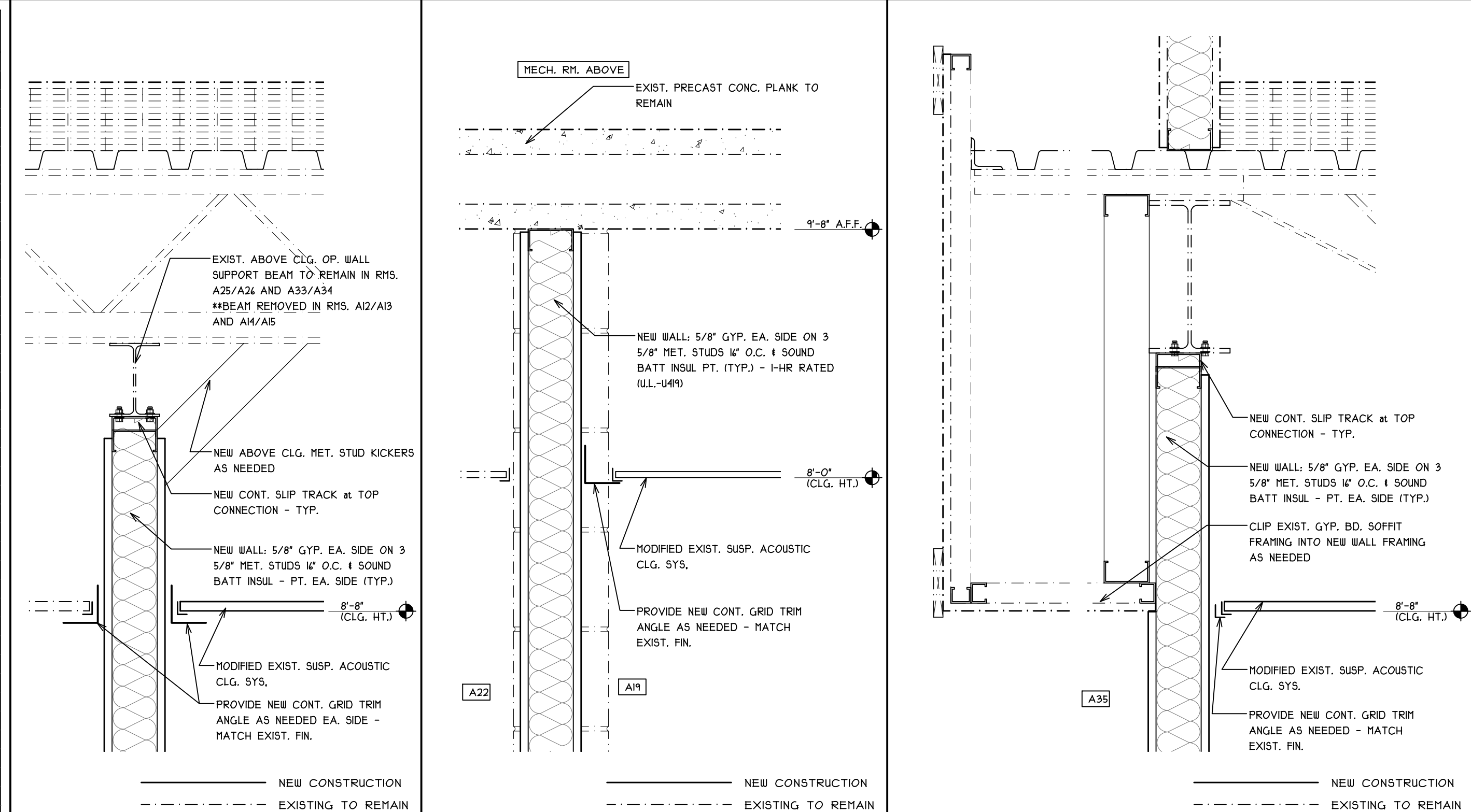
FILE LOCATION: HA25004 - BAS Hsk ServicesPROJECTSMILLER BLDG125006-Miller - A1.dwg  
 DATE PLOTTED: 11/5/2025  
 LINDHOUT ASSOCIATES architects pc  
 THIS DOCUMENT AND THE SUBJECT MATTER CONTAINED THEREIN IS PROPRIETARY AND IS NOT TO BE USED OR REPRODUCED WITHOUT PRIOR WRITTEN APPROVAL.  
 LINDHOUT ASSOCIATES architects pc  
 COPYRIGHT © 2025



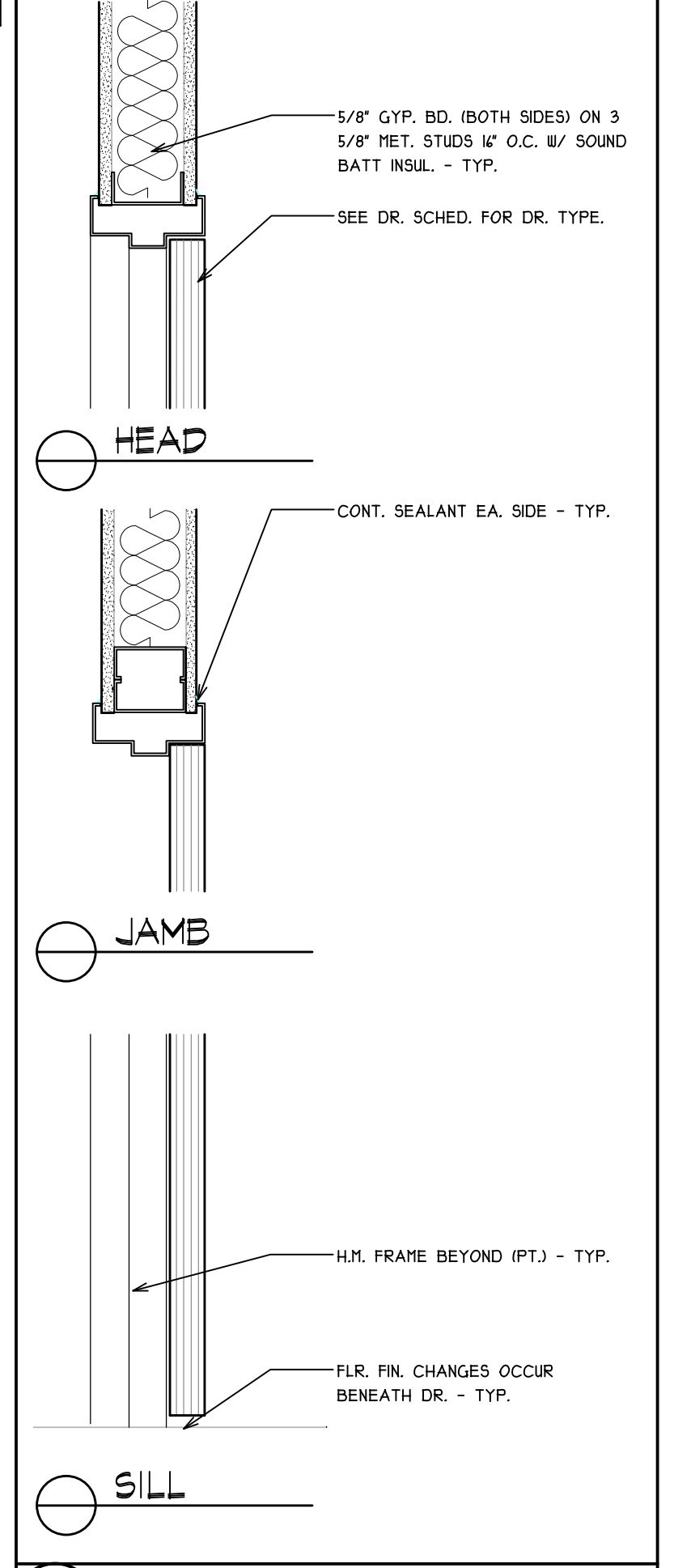
RM. SCHEDULE	
A1	OFFICE
A2	RECEPTION
A3	OFFICE
A4	WOMENS
A5	MENS
A6	OFFICE
A7	CORRIDOR
A8	TOILET RR.
A9	TOILET RR.
A10	TOILET RR.
A11	TOILET RR.
A12	CLASSROOM
A13	CLASSROOM
A14	CLASSROOM
A15	CLASSROOM
A16	STORAGE
A17	STORAGE
A18	UNASSIGNED
A19	CHILD MOTOR RR.
A19A	LT. CLOSET
A20	WOMENS
A21	MENS
A22	CORRIDOR
A23A	MECHANICAL RM. ACCESS
A24	GREENHOUSE
A25	CLASSROOM
A26A	VESTIBULE
A26	CLASSROOM
A27	CRAFTS
A28	KITCHEN
A29	TOILET
A30	STORAGE
A31	STORAGE
A32	RECEIVING
A33	CLASSROOM
A34	CLASSROOM
A35	COMMONS ROOM
A36	NOT ASSIGNED
A37	CHILD MOTOR RR.
A38	BREAK ROOM

NEW 34" BASE 4 UPPER CABINETS PROVIDED BY OWNER INSTALLED BY CONTRACTOR NEW C.TOP 4 B.SPLASH BY CONTRACTOR

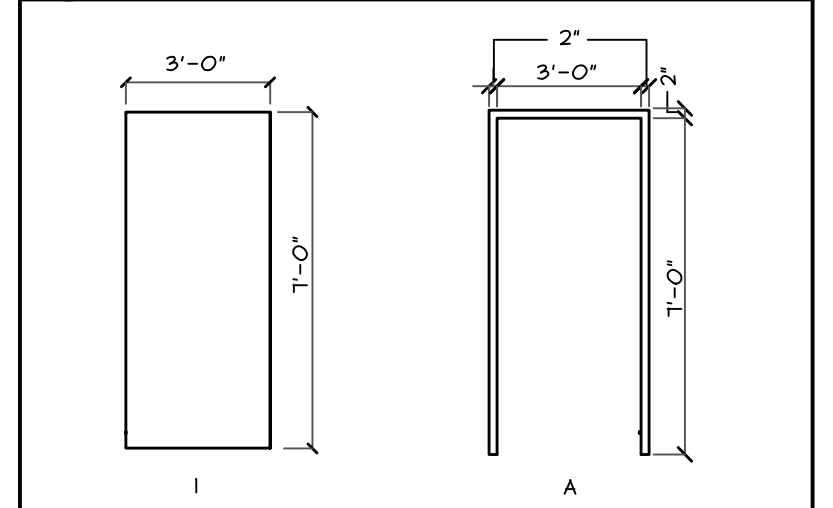
- GENERAL NOTES:**
- ALL NEW WALLS W/IN RMS A1, A7, A9 (INCL. NEW LT. CLOSET) SHALL BE 1-HR RATED (UL-149).
  - REFER TO DETAIL 1/CA FOR INTERIOR ELEVATIONS.
  - CONTRACTOR TO PROVIDE APPROX. 100 SF. TOTAL OF NEW CPT W/IN RMS. A12-A17.
  - CONTRACTOR TO PROVIDE NEW PAINT ON ALL NEW GYP. BD. FRAMED WALLS.
  - ALL WALLS W/IN RM A19 TO RECEIVE NEW PAINT.
  - CONTRACTOR TO PROTECT EXIST. FINISHES THROUGHOUT CONSTRUCTION. DAMAGED FINISHES TO BE REPLACED AT NO EXTRA COST TO OWNER.
  - CONTRACTOR TO PROVIDE NEW 4" RUBBER BASE AT NEW WALLS (MATCH EXIST COLOR).
  - EXIST. MILLWORK NICHES W/IN RMS. A12-A15 TO RECEIVE NEW ACCENT PAINT ON REAR WALL. REFER TO DETAIL 4/CA FOR MORE INFORMATION.
  - REFER TO DETAIL 2/CA FOR INTERIOR ELEVATIONS.



4 WALL DETAIL SCALE: 1 1/2" = 1'-0"  
 5 WALL DETAIL SCALE: 1 1/2" = 1'-0"  
 6 WALL DETAIL SCALE: 1 1/2" = 1'-0"



3 H.J. & S DETAILS SCALE: 1 1/2" = 1'-0"



2 DR. & FRAME INFORMATION SCALE: 1/4" = 1'-0"

RM/DR#	DR. SIZE	DOOR			FRAME			RATING*	HOUR SET
		TYP.	MAT.	FIN.	TYP.	MAT.	FIN.		
1A	3'-0"x7'-0"	EXIST.							
2A	3'-0"x6'-10"	EXIST.					45/C		
3A	3'-0"x6'-10"	EXIST.							
4A	3'-0"x7'-2"	EXIST.							
5A	3'-0"x7'-2"	EXIST.							
6A	3'-0"x6'-10"	EXIST.					45/C		
7A	(2) 3'-0"x6'-10"	EXIST.					45/C		
7B	3'-0"x6'-10"	EXIST.					45/C		
7C	(2) 3'-0"x7'-0"	EXIST.							
10	(2) 3'-0"x7'-0"	EXIST.					90/B		
8A	2'-4"x6'-10"	EXIST.							
9A	2'-4"x6'-10"	EXIST.							
10A	2'-4"x6'-10"	EXIST.							
8A	2'-4"x6'-10"	EXIST.							
12A	3'-0"x7'-0"	I	SCBD	ST./V.	A	H.M.	PT.		1
12B	3'-0"x7'-0"	EXIST.							
12C	3'-0"x7'-0"	I	SCBD	ST./V.	A	H.M.	PT.		2
13A	3'-0"x7'-0"	I	SCBD	ST./V.	A	H.M.	PT.		1
13B	3'-0"x7'-0"	EXIST.							
13C	3'-0"x7'-0"	I	SCBD	ST./V.	A	H.M.	PT.		1
13A	3'-0"x7'-0"	EXIST.							
13B	3'-0"x7'-0"	EXIST.							
13C	3'-0"x7'-0"	EXIST.							
13A	3'-0"x7'-0"	EXIST.							
13B	3'-0"x7'-0"	EXIST.							
13C	3'-0"x7'-0"	EXIST.							
13A	3'-0"x7'-0"	EXIST.							
13B	3'-0"x7'-0"	EXIST.							
13C	3'-0"x7'-0"	EXIST.							
13A	3'-0"x7'-0"	EXIST.							
13B	3'-0"x7'-0"	EXIST.							
13C	3'-0"x7'-0"	EXIST.							
13A	3'-0"x7'-0"	EXIST.							
13B	3'-0"x7'-0"	EXIST.							
13C	3'-0"x7'-0"	EXIST.							
13A	3'-0"x7'-0"	EXIST.							
13B	3'-0"x7'-0"	EXIST.							
13C	3'-0"x7'-0"	EXIST.							
13A	3'-0"x7'-0"	EXIST.							
13B	3'-0"x7'-0"	EXIST.							
13C	3'-0"x7'-0"	EXIST.							
13A	3'-0"x7'-0"	EXIST.							
13B	3'-0"x7'-0"	EXIST.							
13C	3'-0"x7'-0"	EXIST.							
13A	3'-0"x7'-0"	EXIST.							
13B	3'-0"x7'-0"	EXIST.							
13C	3'-0"x7'-0"	EXIST.							
13A	3'-0"x7'-0"	EXIST.							
13B	3'-0"x7'-0"	EXIST.							
13C	3'-0"x7'-0"	EXIST.							
13A	3'-0"x7'-0"	EXIST.							
13B	3'-0"x7'-0"	EXIST.							
13C	3'-0"x7'-0"	EXIST.							
13A	3'-0"x7'-0"	EXIST.							
13B	3'-0"x7'-0"	EXIST.							
13C	3'-0"x7'-0"	EXIST.							
13A	3'-0"x7'-0"	EXIST.							
13B	3'-0"x7'-0"	EXIST.							
13C	3'-0"x7'-0"	EXIST.							
13A	3'-0"x7'-0"	EXIST.							
13B	3'-0"x7'-0"	EXIST.							
13C	3'-0"x7'-0"	EXIST.							
13A	3'-0"x7'-0"	EXIST.							
13B	3'-0"x7'-0"	EXIST.							
13C	3'-0"x7'-0"	EXIST.							
13A	3'-0"x7'-0"	EXIST.							
13B	3'-0"x7'-0"	EXIST.							
13C	3'-0"x7'-0"	EXIST.							
13A	3'-0"x7'-0"	EXIST.							
13B	3'-0"x7'-0"	EXIST.							
13C	3'-0"x7'-0"	EXIST.							
13A	3'-0"x7'-0"	EXIST.							
13B	3'-0"x7'-0"	EXIST.							
13C	3'-0"x7'-0"	EXIST.							
13A	3'-0"x7'-0"	EXIST.							
13B	3'-0"x7'-0"	EXIST.							
13C	3'-0"x7'-0"	EXIST.							
13A	3'-0"x7'-0"	EXIST.							
13B	3'-0"x7'-0"	EXIST.							
13C	3'-0"x7'-0"	EXIST.							
13A	3'-0"x7'-0"	EXIST.							
13B	3'-0"x7'-0"	EXIST.							
13C	3'-0"x7'-0"	EXIST.							
13A	3'-0"x7'-0"	EXIST.							
13B	3'-0"x7'-0"	EXIST.							
13C	3'-0"x7'-0"	EXIST.							
13A	3'-0"x7'-0"	EXIST.							
13B	3'-0"x7'-0"	EXIST.							
13C	3'-0"x7'-0"	EXIST.							
13A	3'-0"x7'-0"	EXIST.							
13B	3'-0"x7'-0"	EXIST.							
13C	3'-0"x7'-0"	EXIST.							
13A	3'-0"x7'-0"	EXIST.							
13B	3'-0"x7'-0"	EXIST.							
13C	3'-0"x7'-0"	EXIST.							
13A	3'-0"x7'-0"	EXIST.							
13B	3'-0"x7'-0"	EXIST.							
13C	3'-0"x7'-0"	EXIST.							
13A	3'-0"x7'-0"	EXIST.							
13B	3'-0"x7'-0"	EXIST.							
13C	3'-0"x7'-0"	EXIST.							
13A	3'-0"x7'-0"	EXIST.							
13B	3'-0"x7'-0"	EXIST.							
13C	3'-0"x7'-0"	EXIST.							
13A	3'-0"x7'-0"	EXIST.							
13B	3'-0"x7'-0"	EXIST.							
13C	3'-0"x7'-0"	EXIST.							
13A	3'-0"x7'-0"	EXIST.							
13B	3'-0"x7'-0"	EXIST.							
13C	3'-0"x7'-0"	EXIST.							
13A	3'-0"x7'-0"	EXIST.							
13B	3'-0"x7'-0"	EXIST.							
13C	3'-0"x7'-0"	EXIST.							
13A	3'-0"x7'-0"	EXIST.							
13B	3'-0"x7'-0"	EXIST.							
13C	3'-0"x7'-0"	EXIST.							
13A	3'-0"x7'-0"	EXIST.							
13B	3'-0"x7'-0"	EXIST.							
13C	3'-0"x7'-0"	EXIST.							
13A	3'-0"x7'-0"	EXIST.							
13B	3'-0"x7'-0"	EXIST.							
13C	3'-0"x7'-0"	EXIST.							
13A	3'-0"x7'-0"	EXIST.							
13B	3'-0"x7'-0"	EXIST.							
13C	3'-0"x7'-0"	EXIST.							
13A	3'-0"x7'-0"	EXIST.							
13B	3'-0"x7'-0"	EXIST.							
13C	3'-0"x7'-0"	EXIST.							
13A	3'-0"x7'-0"	EXIST.							
13B	3'-0"x7'-0"	EXIST.							
13C	3'-0"x7'-0"	EXIST.							
13A	3'-0"x7'-0"	EXIST.							
13B	3'-0"x7'-0"	EXIST.							
13C	3'-0"x7'-0"	EXIST.							
13A	3'-0"x7'-0"	EXIST.							
13B	3'-0"x7'-0"	EXIST.							
13C	3'-0"x7'-0"	EXIST.							
13A	3'-0"x7'-0"	EXIST.							
13B	3'-0"x7'-0"	EXIST.							
13C	3'-0"x7'-0"	EXIST.							
13A	3'-0"x7'-0"	EXIST.							
13B	3'-0"x7'-0"	EXIST.							
13C	3'-0"x7'-0"	EXIST.							
13A	3'-0"x7'-0"	EXIST.							
13B	3'-0"x7'-0"	EXIST.							
13C	3'-0"x7'-0"	EXIST.							
13A	3'-0"x7'-0"	EXIST.							
13B	3'-0"x7'-0"	EXIST.							
13C	3'-0"x7'-0"	EXIST.							
13A	3'-0"x7'-0"	EXIST.							
13B	3'-0"x7'-0"	EXIST.							
13C	3'-0"x7'-0"	EXIST.							
13A	3'-0"x7'-0"	EXIST.							
13B	3'-0"x7'-0"	EXIST.							
13C	3'-0"x7'-0"	EXIST.							
13A	3'-0"x7'-0"	EXIST.							
13B	3'-0"x7'-0"	EXIST.							
13C	3'-0"x7'-0"	EXIST.							
13A	3'-0"x7'-0"	EXIST.							
13B	3'-0"x7'-0"	EXIST.							
13C	3'-0"x7'-0"	EXIST.							
13A	3'-0"x7'-0"	EXIST.							
13B	3'-0"x7'-0"	EXIST.							
13C	3'-0"x7'-0"	EXIST.							
13A	3'-0"x7'-0"	EXIST.							
13B	3'-0"x7'-0"	EXIST.							
13C	3'-0"x7'-0"	EXIST.							
13A	3'-0"x7'-0"	EXIST.							
13B	3'-0"x7'-0"	EXIST.							
13C	3'-0"x7'-0"	EXIST.							