



Board of Education, Regular Meeting
Monday, November 10, 2025
5:45 PM Closed Session | 7:00PM Regular Meeting
Administration Building | Board Room
125 S. Church Street
Brighton, MI 48116

I. Call to Order		
II. Closed Session – Attorney Client Privileged Communication		
III. Roll Call		
IV. Pledge of Allegiance		
V. Approval of Agenda		
VI. Superintendent Report		
A. School Showcase – Maltby Intermediate Schools B. Student Representative/BHS C. Premiere Security		
VII. Call to the public		
VIII. For Action		
A. Regular Meeting minutes of October 13, 2025	Report 25-103	Page 3
B. Special Meeting minutes of October 20, 2025	Report 25-104	Page 7
C. School of Choice for 2 nd Semester, January 2026.	Report 25-105	Page 10
D. Summer Tax Resolution.	Report 25-106	Page 11
E. State School Aid Act Section 31 aa Funding	Report 25-107	Page 19
F. Closed Session – Negotiations	Report 25-108	Page 20
G. BEA Contract	Report 25-109	Page 21
H. BASAA Contract.	Report 25-110	Page 22
I. Hawkins Crosswalk	Report 25-111	Page 23
IX. For Future Action		
A. Miller renovation.	Report 25-112	Page 27
B. Middle School Honors English	Report 25-113	Page 28
C. PE Credit	Report 25-114	Page 29
D. New Course Proposals.	Report 25-115	Page 30
X. Board Committee Chair Reports Community Recognition		
XI. Regular Meeting, Monday, December 8, 2025 at 7PM		
XII. Adjournment		

This is a meeting of the Board of Education in public for the purpose of conducting the School District’s Business and is not to be consider a public community meeting. There is a time for public participation during the meeting as indicated in agenda item “Call to the Public.”

**BRIGHTON AREA SCHOOLS
Board of Education
November 10, 2025**

Closed Session

Subject:

A. Attorney Client Privileged Communication

Motion

Moved by:

Supported by:

To enter closed session for the purpose of Attorney Client Privileged communication.

Roll Call Vote:

____ Stahl
____ Krebs
____ Marks
____ Myers
____ Urbain
____ Storm
____ Tierney

**BRIGHTON AREA SCHOOLS
Board of Education
November 10, 2025**

Report #25-103

For Action

Subject:

Board of Education Meeting Minutes

Recommendation:

That the Board of Education approve the regular meeting minutes as presented.

Rationale:

Facts/Statistics:

Per Board policy meeting minutes require board approval.

District Goal Addressed:

- Communication
- Fiscal Integrity
- Student Achievement

Motion

Moved by:

Supported by:

To approve the meeting minutes of October 13, 2025 as presented.

Voice Vote:

Ayes

Nays



Regular Meeting
Administration Building | Board Room
125 S. Church Street
Brighton, MI 48116
Monday, October 13, 2025
5:30PM Closed Session | 7:00PM Regular Board Meeting

Minutes

- I. **Closed session**
Motion: To enter closed session for the purpose of discussing negotiation strategies connected with BEA, BESPAs and BASAA bargaining units inasmuch as the administrated has requested a closed session.
Moved by:
Supported by:
Roll call vote: 7 ayes
Motion carried.
Board entered closed session at 5:30 p.m.
Board entered open session at 6:55 p.m.
- II. **Call to Order**
President Myers called the meeting to order at 7:02 PM.
- III. **Pledge of Allegiance**
President Myers led the board in the pledge of allegiance.
- IV. **Roll Call**
Members present: Roger Myers, President, Jennifer Marks, Vice President, Dr. Angela Krebs, Secretary, Ken Stahl, Treasurer, Andy Storm, Trustee, Alicia Urbain, Trustee and Katie Tierney, Trustee. Also present: Dr. Matthew Outlaw, Superintendent of Schools, Dr. Liz Mosher, Assistant Superintendent of Curriculum, Jacob Anastasoff, Assistant Superintendent of Human Resources, Dave Jones, Assistant Superintendent of Finance, Starr Acromite, Recording Secretary, staff, press and visitors.
- V. **Approval of Agenda**
Motion: To approve and amend the agenda as presented; Add - For Action, item E. To add Ken Stahl as an alternate to the MASB Delegate Assembly on October 23, 2025.

October 13, 2025

Moved by: Urbain
Supported by: Storm
Voice vote: 7 ayes.
Motion carried.

VI. **Superintendent Report**

- A. Shining Stars – BAS staff members who completed LETRS training received “Shining Star” recognition for their achievement.
- B. Auditors report – Nick Kossaras from Maner Costerisan presented the financial statement for board review for the year ended June 30, 2025.

President Myers provided instruction for public participation.

VII. **Call to the Public**

Public comments were received by the board.

VIII. **For Action**

- A. Motion: To approve the regular meeting minutes of September 8, 2025 as presented.

Moved by: Stahl
Supported by: Krebs
Voice vote: 7 ayes.
Motion carried.

- B. Motion: To approve the Human Resources report as presented.

Moved by: Urbain
Supported by: Krebs
Voice vote: 7 ayes.
Motion carried.

- C. Motion: To adopt the policy package as presented.

Moved by: Stahl
Supported by: Krebs
Voice vote: 7 ayes.
Motion carried.

- D. Motion: That the board award the contract to Mitchell Research and Communication.

Moved by: Marks
Supported by: Stahl
Voice vote: 6 ayes, 1 abstention – Urbain.
Motion carried.

- E. Motion: To add Ken Stahl as an alternate to the MASB Delegate Assembly on October 23, 2025.

Moved by: Storm
Support by: Urbain

October 13, 2025

Voice vote: 7 ayes.
Motion carried.

IX. For Future Action

- A. School of Choice for 2nd Semester, January 2026 - Discussion took place and it is recommended that the district offer a limited School of Choice program for second semester, January 2026.
- B. Summer Tax Resolution – The district will be asking the governmental units to collect summer tax levies. The resolutions were presented for board discussion. This item will also be placed on the November 10 agenda for board consideration.
- C. Miller renovation – Dave Jones, Assistant Superintendent of Finance provided an update on the project and indicated it will be brought back at a future meeting for board action.
- D. PE credit - Policy committee has a recommendation to define how students can opt out of physical education. More information will be provided.

X. Board Committee Chair Report | Community Recognition

Board members provided updates and reports from the Facility, Academic and Fund-raising ad hoc committees.

- XI. Board work session, Monday, October 20, 2025 at 7PM and Next Regular Meeting Monday, November 10, 2025 at 7PM in the board room at the Administration building.

XII. Adjournment

President Myers adjourned the meeting at 7:53 p.m.

BRIGHTON AREA SCHOOLS
Board of Education
November 10, 2025

Report #25-104

For Action

Subject:

Board of Education Meeting Minutes

Recommendation:

That the Board of Education approve the regular meeting minutes as presented.

Rationale:

Facts/Statistics:

Per Board policy meeting minutes require board approval.

District Goal Addressed:

- Communication
- Fiscal Integrity
- Student Achievement

Motion

Moved by:

Supported by:

To approve the special meeting minutes of October 20, 2025 as presented.

Voice Vote:

Ayes

Nays



Closed Session| Special Meeting|Board work session
Administrative Offices Building/Board Room
125 S. Church Street, Brighton, Michigan 48116
Monday, October 20, 2025
6:00PM Closed session | 7:00PM Work session

Minutes

I. Call to Order

President Myers called the meeting to order at 6:00 p.m.

II. Roll Call

Members present: Roger Myers, President, Jennifer Marks, Vice President, Dr. Angela Krebs, Secretary, Ken Stahl, Treasurer, Alicia Urbain, Trustee, Katie Tierney, Trustee. Andy Storm arrived at 6:41 p.m.

Also present: Dr. Matthew Outlaw, Superintendent of Schools, Dave Jones, Assistant Superintendent of Finance, Dr. Liz Mosher, Assistant Superintendent of Curriculum, Jacob Anastasoff, Assistant Superintendent of Human Resources, John Thompson, Athletic Director, Scott Jacobs, Operations Director, Starr Acromite, Recording Secretary, staff, and visitors.

III. Closed session

Motion: I move that this Board enter into closed session to conduct a grievance hearing, and that this closed session be held at the request of the staff member pursuant to Section 8(1)(h) of the Open Meetings Act.

Moved by: Stahl

Supported by: Krebs

Roll call vote: 6 ayes, 1 absent – Storm.

Motion carried.

Board entered closed session at 6:01 p.m.

Board entered open session at 7:04 p.m.

Motion: I move that this board deny the Level 3 BEA Grievance 3.24-25 as presented.

Moved by: Urbain

Supported by: Stahl

Roll call vote: 7 ayes.

Motion carried.

October 20, 2025

IV. Pledge of Allegiance

At 7:07 p.m. President Myers led the board in reciting the pledge of allegiance.

V. Approval of the agenda

To approve the agenda as presented.

Moved by: Stahl

Supported by: Urbain

Voice vote: 7 ayes.

Motion carried.

VI. Call to the Public

There were no public comments received by the board.

VII. For Action

A. To approve the layoff of certified staff layoff as presented.

Moved by: Urbain

Supported by: Stahl

Voice vote: 7 ayes

Motion carried.

President Myers inquired about a medical leave request; administration responded none was submitted.

VIII. Board Work Session

The Board workshop focused on the bond initiative, with a building-by-building overview presented via powerpoint.

The board recessed for a break at 9:08 p.m. and reconvened 9:15 p.m.

The Board discussed the current reading program being piloted across the district.

IX. Next regular meeting, Monday, October 20, 2025 at 7PM.

President Myers adjourned the meeting at 10:03 p.m.

Date Approved:

Approved by:

Roger Myers, President

Dr. Angela Krebs, Secretary

BRIGHTON AREA SCHOOLS
Board of Education
November 10, 2025

Report #25-106

For Action

Subject:

Schools of Choice for 2nd semester

Recommendation:

Recommendation:

To offer limited school of choice (1) seat each in the following grades 1 – 11

Timeline for grades 1-11 (All buildings) – Semester 2

- SOC window opens Wednesday December 3, 2025 at 8:00 am
- SOC window closes Wednesday December 17, 2025 at Noon

Rationale:

The district continues to deliver one of the most comprehensive educational programs in the state and students consistently recognized for their academic, athletic, fine arts and leadership performance.

Facts/Statistics:

The SOC program will be advertised via media releases, the district's web site and Superintendent Outlaw's newsletter. The Limited SOC program will accept applications for students in grades 1 – 11 (All buildings)

Not all schools will have availability for Schools of Choice Students. If applications exceed the allotted spaces, the district will conduct a random draw. Preference will be given to those families who currently have students enrolled under the SOC program.

District Goal Addressed:

- Communication
- Fiscal Integrity
- Student Achievement

Motion

Moved by:

Supported by:

To adopt the second semester Schools of Choice Program as presented.

Voice Vote:

Ayes

Nays

BRIGHTON AREA SCHOOLS
Board of Education
November 10, 2025

Report #25-107

For Action

Subject:

Summer Tax Collection

Recommendation:

It is our recommendation that the Board approve the Annual Summer Tax Resolution in order to levy 100% of its operating taxes in the summer.

Rationale:

In order to levy taxes on July 1st, the district must adopt an annual resolution and file a copy with each municipality prior to December 31st of the preceding year. Without successful passage of the resolution, or timely filing, the district would only levy taxes in December causing severe cash flow issues.

Facts/Statistics:

The district has levied 100% of its operating taxes in the summer since 2007.

District Goal Addressed:

- Communication
- Fiscal Integrity
- Student Achievement

Motion

Moved by:

Supported by:

To approve the Annual Summer Tax Resolution as presented.

Voice Vote:

Ayes

Nays

A regular meeting of the board of education of the District (the “Board”) was held:

in the BECC board room/Brighton Area Schools, within the boundaries of the District,

on the 10th day of November, 2025, at 7 o’clock in the P.M. (the “Meeting”)

The meeting was called to order by _____, President.

Present: Members

Absent: Members

The following preamble and resolution were offered by Member _____ and supported by Member _____:

WHEREAS, this Board previously adopted a resolution to impose a summer tax levy to collect 100% of annual school property taxes, excluding debt service, upon property located within the District and continuing from year-to-year until specifically revoked by the Board.

NOW, THEREFORE, BE IT RESOLVED THAT:

1. The Board, pursuant to 1976 PA 451, as amended (the Revised School Code), invokes for 2025 its previously adopted ongoing resolution imposing a summer tax levy of all of annual school property taxes, excluding debt service, upon property located within the District and continuing from year-to-year until specifically revoked by the Board and requests that each city and/or township in which the District is located collect those summer taxes.

2. The Superintendent or designee is authorized and directed to forward to the governing body of each city and/or township in which the District is located a copy of this Board’s resolution imposing a summer property tax levy on an ongoing basis and a copy of this resolution requesting that each such city and/or township agree to collect the summer tax levy for 2024 in the amount specified in this resolution. Such forwarding of the resolutions and the request to collect the summer tax levy shall be performed so that they are received by the appropriate governing bodies before January 1, 2026.

3. Pursuant to and in accordance with Section 1613(1) of the Revised School Code, the Superintendent or designee is authorized and directed to negotiate on behalf of the District with the governing body of each city and/or township in which the District is located for the reasonable expenses for collection of the District’s summer tax levy that the city and/or township may bill under MCL 380.1611 or MCL 380.1612.



4. All resolutions and parts of resolutions insofar as they conflict with the provisions of this resolution be and the same are hereby rescinded.

Ayes: Members

Nays: Members

Resolution declared adopted.

Secretary, Board of Education

The undersigned duly qualified and acting Secretary of the Board of Education of _____, hereby certifies that the foregoing constitutes a true and complete copy of a resolution adopted by the Board at the Meeting, the original of which is part of the Board's minutes. The undersigned further certifies that notice of the Meeting was given to the public pursuant to the provisions of the "Open Meetings Act" (Act 267, Public Acts of Michigan, 1976, as amended).

Secretary, Board of Education

AGREEMENT FOR COLLECTION OF SUMMER SCHOOL PROPERTY TAXES

AGREEMENT made this 12th day of November, 2025 by and between Brighton Area Schools, with offices located at 125 S. Church St., Brighton, MI 48116 (hereinafter "School District") and Brighton Township with offices located at 4863 Buno Road, Brighton, MI 48114 (hereinafter "Township"), pursuant to 1976 PA 451, as amended, for the purposes of providing for the collection by the Township of a Summer levy of School District property taxes for the year 2026.

The parties agree as follows:

1. The Township agrees to collect 100% of the total school non-homestead operating property taxes as certified by the School District for levy on July 1, 2026 on property located within the Township. Interest earned on said taxes will be retained by the township.
2. The School District agrees to pay Township costs of assessment and collection as follows:

\$ 4.00 per parcel

It is understood that the tax rate as spread by the Township would also reflect the sum of 100% of the taxes of the Livingston Education Service Agency.

3. No later than May 31, 2026 the School District shall certify to the Township Supervisor the school millage to be levied on property for summer collection in 2026.
4. The Township Treasurer shall account for and deliver summer school tax collections as follows:
 - a. Summer Tax collections shall be paid to the School District within ten (10) business days from the 1st and 15th of each month via electronic transfer (wire transfer, ACH, etc.)

SCHOOL DISTRICT

Signature authorized by Board
of Education Resolution of
November 10, 2025

President

Secretary

TOWNSHIP

Signature authorized by Board
of Trustees Resolution of

Supervisor

Treasurer

AGREEMENT FOR COLLECTION OF SUMMER SCHOOL PROPERTY TAXES

AGREEMENT made this 12th day of November, 2025 by and between Brighton Area Schools, with offices located at 125 S. Church St., Brighton, MI 48116 (hereinafter "School District") and City of Brighton, with offices located at 200 N. 1st St, Brighton MI (hereinafter "City"), pursuant to 1976 PA 451, as amended, for the purposes of providing for the collection by the City of a Summer levy of School District property taxes for the year 2026.

The parties agree as follows:

1. The City agrees to collect 100% of the total school non-homestead operating property taxes as certified by the School District for levy on July 1, 2026 on property located within the City. Interest earned on said taxes will be retained by the City.
2. The School District agrees to pay the City costs of assessment and collection as follows:

\$ 4.00 per parcel

It is understood that the tax rate as spread by the City would also reflect the sum of 100% of the taxes of the Livingston Education Service Agency.

3. No later than May 31, 2026, the School District shall certify to the City Manager the school millage to be levied on property for summer collection in 2026.
4. The City Treasurer shall account for and deliver summer school tax collections as follows:
 - a. Summer Tax collections shall be paid to the School District within ten (10) business days from the 1st and 15th of each month via electronic transfer (wire transfer, ACH, etc.)

SCHOOL DISTRICT

Signature authorized by Board
of Education Resolution of
November 10, 2025

President

Secretary

CITY

Signature authorized by City
Council Resolution of

City Manager

Finance Director

AGREEMENT FOR COLLECTION OF SUMMER SCHOOL PROPERTY TAXES

AGREEMENT made this 12th day of November, 2025 by and between Brighton Area Schools, with offices located at 125 S. Church St., Brighton, MI 48116 (hereinafter "School District") and Genoa Township with offices located at 2911 Dorr Road, Brighton, MI 48116 (hereinafter "Township"), pursuant to 1976 PA 451, as amended, for the purposes of providing for the collection by the Township of a Summer levy of School District property taxes for the year 2026.

The parties agree as follows:

1. The Township agrees to collect 100% of the total school non-homestead operating property taxes as certified by the School District for levy on July 1, 2026 on property located within the Township. Interest earned on said taxes will be retained by the township.
2. The School District agrees to pay Township costs of assessment and collection as follows:

\$ 4.00 per parcel

It is understood that the tax rate as spread by the Township would also reflect the sum of 100% of the taxes of the Livingston Education Service Agency.

3. No later than May 31, 2026 the School District shall certify to the Township Supervisor the school millage to be levied on property for summer collection in 2026.
4. The Township Treasurer shall account for and deliver summer school tax collections as follows:
 - a. Summer Tax collections shall be paid to the School District within ten (10) business days from the 1st and 15th of each month via electronic transfer (wire transfer, ACH, etc.)

SCHOOL DISTRICT

Signature authorized by Board
of Education Resolution of
November 10, 2025

President

Secretary

TOWNSHIP

Signature authorized by Board
of Trustees Resolution of

Supervisor

Treasurer

AGREEMENT FOR COLLECTION OF SUMMER SCHOOL PROPERTY TAXES

AGREEMENT made this 12th day of November, 2025 by and between Brighton Area Schools, with offices located at 125 S. Church St., Brighton, MI 48116 (hereinafter "School District") and Green Oak Township with offices located at 10001 Silver Lake Road, Brighton, MI 48116 (hereinafter "Township"), pursuant to 1976 PA 451, as amended, for the purposes of providing for the collection by the Township of a Summer levy of School District property taxes for the year 2026.

The parties agree as follows:

1. The Township agrees to collect 100% of the total school non-homestead operating property taxes as certified by the School District for levy on July 1, 2026 on property located within the Township. Interest earned on said taxes will be retained by the township.
2. The School District agrees to pay Township costs of assessment and collection as follows:

\$ 4.00 per parcel

It is understood that the tax rate as spread by the Township would also reflect the sum of 100% of the taxes of the Livingston Education Service Agency.

3. No later than May 31, 2026 the School District shall certify to the Township Supervisor the school millage to be levied on property for summer collection in 2026.
4. The Township Treasurer shall account for and deliver summer school tax collections as follows:
 - a. Summer Tax collections shall be paid to the School District within ten (10) business days from the 1st and 15th of each month via electronic transfer (wire transfer, ACH, etc.)

SCHOOL DISTRICT

Signature authorized by Board
of Education Resolution of
November 10, 2025

President

Secretary

TOWNSHIP

Signature authorized by Board
of Trustees Resolution of

Supervisor

Treasurer

AGREEMENT FOR COLLECTION OF SUMMER SCHOOL PROPERTY TAXES

AGREEMENT made this 12th day of November, 2025 by and between Brighton Area Schools, with offices located at 125 S. Church St., Brighton, MI 48116 (hereinafter "School District") and Hamburg Township with offices located at PO Box 157, Hamburg, MI 48139 (hereinafter "Township"), pursuant to 1976 PA 451, as amended, for the purposes of providing for the collection by the Township of a Summer levy of School District property taxes for the year 2026.

The parties agree as follows:

1. The Township agrees to collect 100% of the total school non-homestead operating property taxes as certified by the School District for levy on July 1, 2026 on property located within the Township. Interest earned on said taxes will be retained by the township.
2. The School District agrees to pay Township costs of assessment and collection as follows:

\$ 4.00 per parcel

It is understood that the tax rate as spread by the Township would also reflect the sum of 100% of the taxes of the Livingston Education Service Agency.

3. No later than May 31, 2026 the School District shall certify to the Township Supervisor the school millage to be levied on property for summer collection in 2026.
4. The Township Treasurer shall account for and deliver summer school tax collections as follows:
 - a. Summer Tax collections shall be paid to the School District within ten (10) business days from the 1st and 15th of each month via electronic transfer (wire transfer, ACH, etc.)

SCHOOL DISTRICT

Signature authorized by Board
of Education Resolution of
November 10, 2025

President

Secretary

TOWNSHIP

Signature authorized by Board
of Trustees Resolution of

Supervisor

Treasurer

**BRIGHTON AREA SCHOOLS
Board of Education
November 10, 2025**

Report #25-107

For Action

Subject:

State School Aid Act Section 31aa Funding

Recommendation:

Rationale:

Facts/Statistics:

The deadline to opt-in is November 16, 2025 at 11:59 pm.

District Goal Addressed:

- Communication
- Fiscal Integrity
- Student Achievement

Motion

Moved by:

Supported by:

I move that the Board adopt resolution ... as presented.

Voice Vote:

Ayes

Nays

**BRIGHTON AREA SCHOOLS
Board of Education
November 10, 2025**

Closed Session

Subject:

A. Negotiations, BEA, BESPAA and BASAA

Motion

Moved by:

Supported by:

To enter closed session for the purpose of discussing negotiation strategies connected with BEA, BESPAA and BASAA bargaining units inasmuch as the administration has requested a closed session

Roll Call Vote:

_____ Stahl
_____ Krebs
_____ Marks
_____ Myers
_____ Urbain
_____ Storm
_____ Tierney

BRIGHTON AREA SCHOOLS
Board of Education
November 10, 2025

Report #25-109

For Action

Subject:

BEA Contract

Recommendation:

Rationale:

Facts/Statistics:

District Goal Addressed:

- Communication
- Fiscal Integrity
- Student Achievement

Motion

Moved by:

Supported by:

That the board approve the BEA Contract presented at place.

Voice Vote:

Ayes

Nays

BRIGHTON AREA SCHOOLS
Board of Education
November 10, 2025

Report #25-110

For Action

Subject:

BASAA Contract

Recommendation:

Rationale:

Facts/Statistics:

District Goal Addressed:

- Communication
- Fiscal Integrity
- Student Achievement

Motion

Moved by:

Supported by:

That the board approve the BASAA Contract as presented at place.

Voice Vote:

Ayes

Nays

BRIGHTON AREA SCHOOLS
Board of Education
November 10, 2025

Report #25-111

For Action

Subject:

Hawkins Crosswalks

Recommendation:

Rationale:

Facts/Statistics:

District Goal Addressed:

- Communication
- Fiscal Integrity
- Student Achievement

Motion

Moved by:

Supported by:

That the board approve the cost-share agreement for Hawkins Elementary crosswalks as presented.

Voice Vote:

Ayes

Nays

Livingston County Road Commission
COST AGREEMENT FOR SCHOOL ZONE FLASHING BEACONS

This agreement is terminable on thirty days notice by any party

Location: Lee Road @ Hawkins Elementary
 Township: Green Oak

LCRC Plan: n/a
 Job No.:

The undersigned hereby agree to participate in the cost of installation and maintenance of signs and flashing beacons at four locations on Lee Road between a point 0.35 miles west of Rickett Road to a point 0.10 miles east of Rickett Road. Participation shall be based on the percentage of costs shown below. Installation costs relate to material, labor and equipment associated with installing original parts. Maintenance costs relate to material, labor and equipment associated with repair and/or replacement necessary for proper operation, including but not limited to vandalism, crash-related damage, and electronic failures. Title to equipment shall remain with the purchasing agency, and the proper credit of salvaged value shall be issued to all parties upon removal of the equipment, in proportion to their share of original costs.

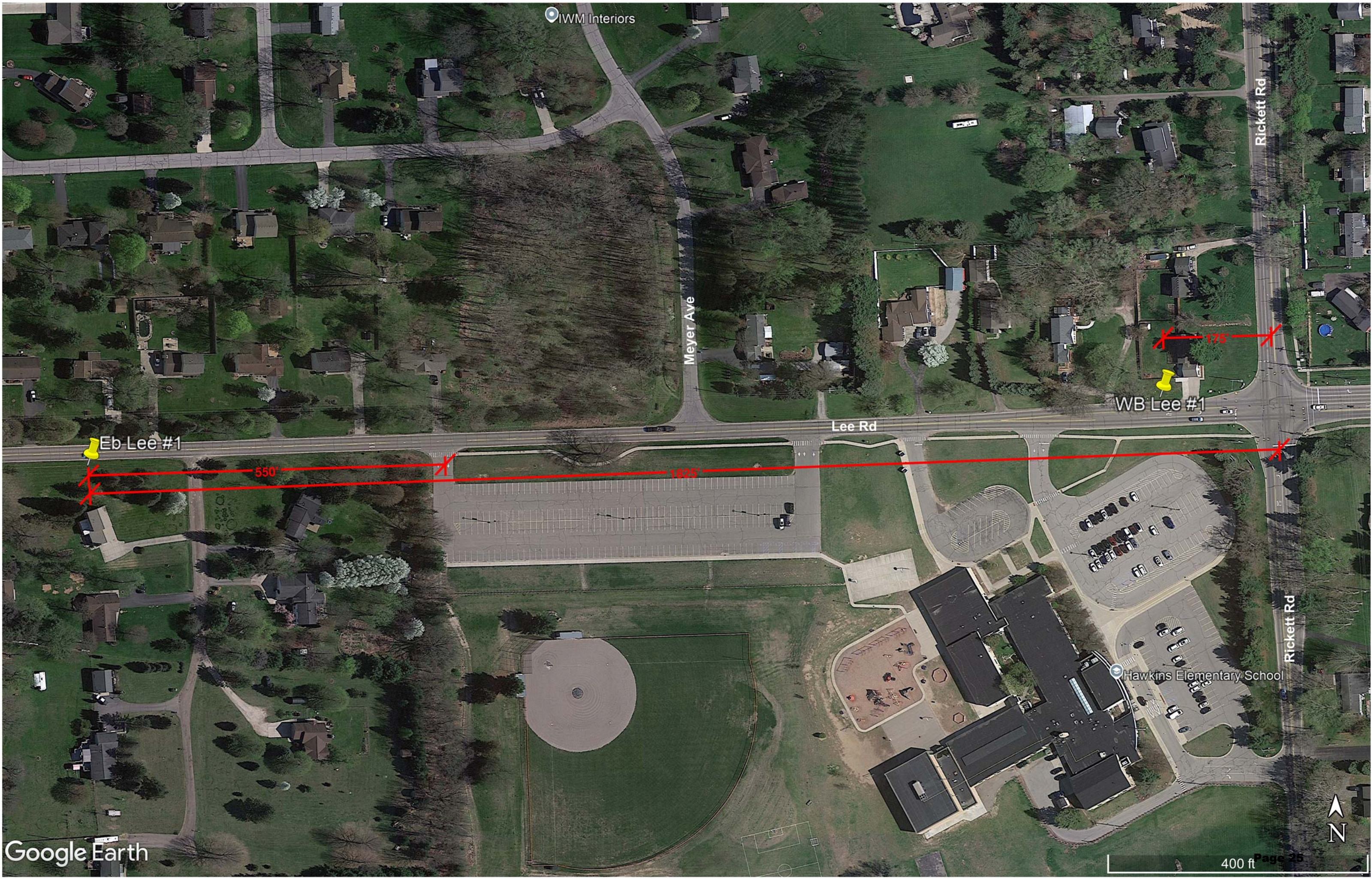
PARTICIPATION

	INSTALLATION		MAINTENANCE	
	Percent	Estimated Cost	Percent	Estimated Cost
Livingston County Road Commission	50%	\$ 18,000	50%	\$ Unknown
Brighton Area Schools	50%	\$ 18,000	50%	\$ Unknown
Total	100%	\$ 36,000	100%	\$ Unknown

It is further agreed that the agency responsible for timing changes and related programming costs shall be:

Livingston County Road Commission

Approved: Brighton Area Schools By: _____ Date: _____ (Signature) _____ (Name and title, printed)	Approved: Livingston County Road Commission By: _____ Date: _____ (Signature) _____ (Name and title, printed)
--	--



Eb Lee #1

550'

1825'

WB Lee #1

175'

Meyer Ave

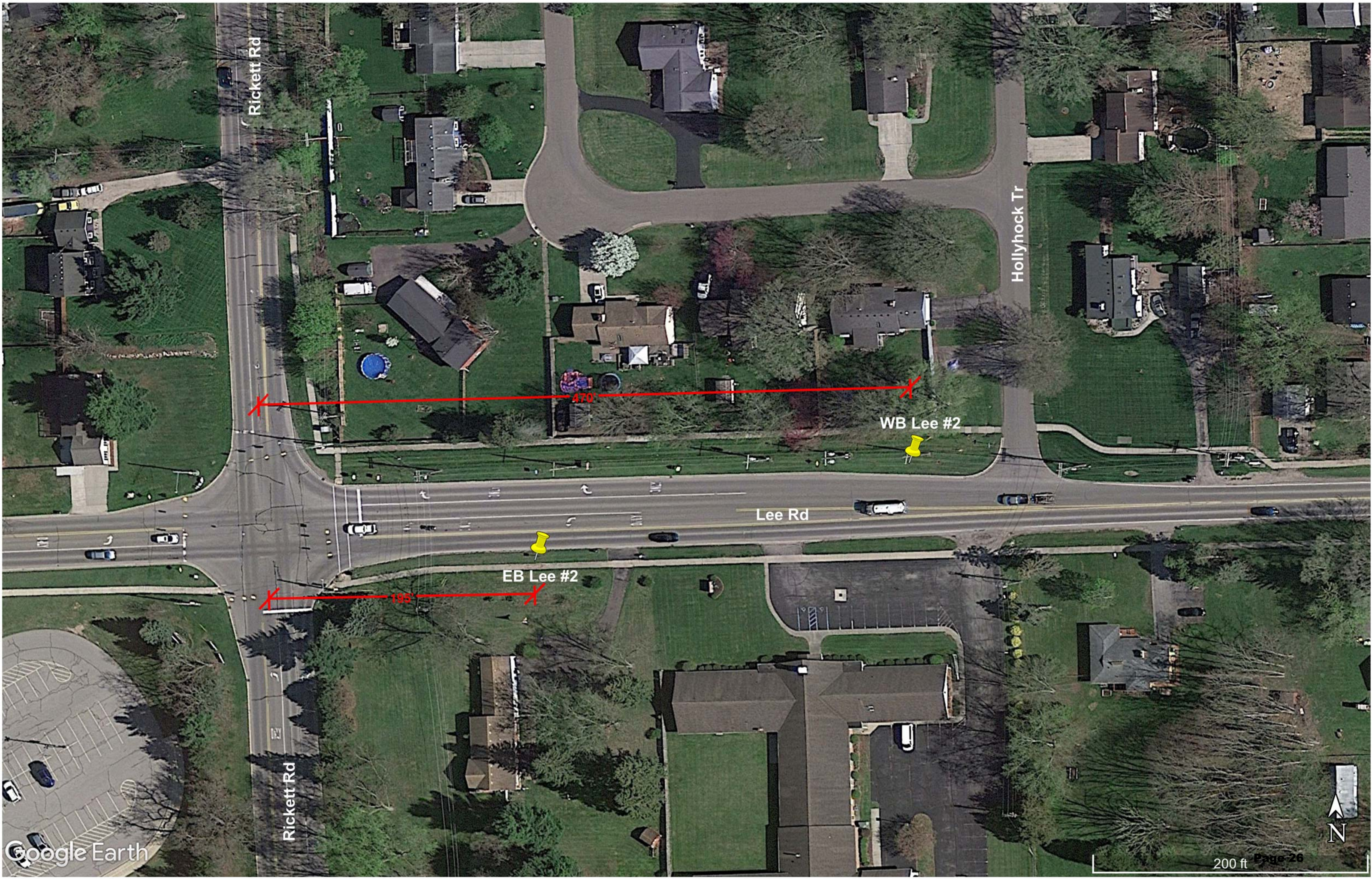
Lee Rd

Rickett Rd

Rickett Rd

Hawkins Elementary School





Rickett Rd

Hollyhock Tr

Lee Rd

Rickett Rd

WB Lee #2

EB Lee #2

470'

195'



200 ft Page 26

BRIGHTON AREA SCHOOLS
Board of Education
November 10, 2025

Report #25-112

For Future Action

Subject:

Miller Renovation

Recommendation:

Rationale:

Facts/Statistics:

District Goal Addressed:

- Communication
- Fiscal Integrity
- Student Achievement

Motion

Moved by:

Supported by:

.

Voice Vote:

Ayes

Nays

BRIGHTON AREA SCHOOLS
Board of Education
November 10, 2025

Report #25-115

For Future Action

Subject:

Middle School Honors English

Recommendation:

Rationale:

Facts/Statistics:

District Goal Addressed:

- Communication
- Fiscal Integrity
- Student Achievement

Motion

Moved by:

Supported by:

Voice Vote:

Ayes

Nays

BRIGHTON AREA SCHOOLS
Board of Education
November 10, 2025

Report #25-115

For Future Action

Subject:
PE Credit

Recommendation:

Rationale:

Facts/Statistics:

In accordance with Michigan law, the District shall award 0.5 credit in Physical Education upon completion of two full seasons of a high school sport, marching band, or equivalently physical school-sponsored or approved non-school sponsored activity as determined by the high school lead principal. A request form must be submitted following the completion of the two seasons or equivalent which requires the signature of the student, parent, and approved sponsor of the given sport or activity.

District Goal Addressed:

- Communication
- Fiscal Integrity
- Student Achievement

Motion

Moved by:
Supported by:

That the board adopt the PE Credit proposal as presented

Voice Vote:

- Ayes
- Nays

BRIGHTON AREA SCHOOLS
Board of Education
November 10, 2025

Report #25-116

For Future Action

Subject: New Course Proposal for 2026-27

Recommendation:

Approve the adoption of the New Course Proposal for 2026-27 school year:

- Advanced Placement (AP) Business with Personal Finance
- Advanced Placement (AP) Seminar- American Lit
- Earth Science Physics

Rationale:

The following courses have been proposed by Brighton High School for 2026-27 school year. The course proposal contains rationale, materials, and planned units of study. The courses was reviewed at the building and district level and approved with administrator representatives.

Facts/Statistics:

Course proposal was generated with staff as an alignment to our strategic plan and/or Michigan Merit Curriculum requirements (graduation requirements). Costs of materials and training (if any) is outlined in the course proposal.

District Goal Addressed:

- Communication
- Fiscal Integrity
- Student Achievement

Motion:

Moved by:

Supported by:

To adopt the new course proposal for 2026-27 as presented.

Voice Vote:

Ayes

Nays

Brighton Area Schools
Course Proposal Adoption Process

New Course Proposal Application

Date: October 2025

Staff Proposing Course: Ryan Ford

Building: Brighton High School

Name of Course: AP Business with Personal Finance

Subject Area: Business, Marketing, and Finance (CTE)

Grade Level: 10 – 12

Length of Course (yr/sem./trimester): Full Year (1.0 credit)

1. Course Description

AP Business with Personal Finance is a new Advanced Placement course introduced by the College Board in partnership with business and industry leaders.

Students will learn both fundamental business disciplines (entrepreneurship, marketing, business finance, accounting, and management) and personal finance concepts (saving, borrowing, budgeting, investing, and risk management) through real-world, project-based learning, case studies, and simulations.

This full-year course mirrors a college-level introductory business course integrated with personal finance and prepares students for the AP Business with Personal Finance Exam, which may lead to college credit or advanced placement depending on the institution.

2. Rationale

Michigan now requires high school students to complete a personal finance course for graduation. Offering AP Business with Personal Finance enables Brighton Area Schools to meet that requirement while providing a rigorous, college-level experience that supports both academic and career readiness.

Brighton Area Schools

Course Proposal Adoption Process

This course aligns with the Brighton Area Schools Mission and it also supports the BAS Strategic Plan (2022 – 2027) measurable outcomes:

1. Achievement – expanding rigorous curriculum and college readiness opportunities.
2. Post-Secondary Attainment – offering an AP-level credential connected to business and financial literacy.
3. Culture for Learning & Growth – giving students access to real-world, career-connected experiences through business and finance pathways.

Additionally, the course supports the Business, Marketing and Management (BMMT) CTE pathway by reinforcing financial literacy, entrepreneurship, and business analysis.

3. Course Objectives

Content Objectives

- Understand and apply business principles including entrepreneurship, marketing, business finance, accounting, and management.
- Apply personal finance concepts such as budgeting, saving, borrowing, investing, credit management, and insurance.
- Evaluate the relationship between business decision-making, personal financial choices, and the broader economy.

Skills Objectives

- Create a business plan using the Business Model Canvas and financial projections.
- Develop and manage a personal financial plan using spreadsheet tools and finance software (Excel, Sheets, etc.)
- Analyze and interpret real financial documents such as pay statements, credit reports, and business ledgers.
- Communicate financial and business information clearly through presentations and reports.

Processes Objectives

- Participate in simulations modeling personal and business financial decisions.
- Collaborate on business case studies and financial planning projects.
- Reflect on financial goals, risk tolerance, and career pathways using a personal finance portfolio.

Brighton Area Schools

Course Proposal Adoption Process

4. State Standards

- Michigan Department of Education Personal Finance Standards (2022) – PF.1 Income, PF.2 Spending, PF.3 Saving/Investing, PF.4 Credit, PF.5 Risk.
- Michigan Merit Curriculum Personal Finance Requirement (Public Act 105 of 2022).
- Perkins V CTE Pathways – Business, Marketing and Management (BMMT) Standards (FAM.01 Financial Analysis, FAM.02 Budgeting and Planning, FAM.03 Risk Management).
- College Board AP Business with Personal Finance Framework (2024 – 2025) – Units 1 through 5:
 1. Businesses and Competition
 2. Marketing
 3. Personal Saving and Borrowing + Business Finance and Accounting
 4. Management and Strategy
 5. Personal Goals, Budgeting, and Investing

5. Facilities / Equipment / Materials / Certification Requirement

Facilities & Equipment

- Current business classrooms are equipped with computers, internet, and projectors.
- Access to College Board AP Classroom platform and digital tools.
- Simulation and financial software (e.g., Next Gen Personal Finance Arcade, Budget Challenge, business simulation apps, potentially Quickbooks, Excel and Sheets).

Materials

- AP Business with Personal Finance Course Framework and teacher resources (College Board).
- Digital or print supplemental materials (~ \$40 per student).
- Simulation licenses and software subscriptions.
- Professional development through an AP Summer Institute for course authorization.

Brighton Area Schools

Course Proposal Adoption Process

Estimated Cost

- Initial setup (software licenses, materials, teacher training): \$1,500 – \$2,500
- Annual materials refresh and licenses: \$500 – \$1,000
- AP Exam Fee (2026–27): approximately \$98 per student (covered by student or district subsidy).
- Teacher PD/AP Audit Prep Stipend: \$1,000 – \$2,000

Certification Requirement

- Michigan CTE endorsement in Business, Marketing, or Finance (GQ, VB, VC or equivalent).
- Completion of the College Board AP Course Audit for AP Business with Personal Finance.

6. Implementation Timeline

Proposal Submission: Fall 2025

District Approval: Winter 2025 – 2026

Added to Catalog: Spring 2026

First Offering: Fall 2026 (2026 – 2027 School Year)

First AP Exam Administration: May 2027 (via Bluebook digital exam platform)

Impact on Existing Offerings:

- Serves as an advanced alternative to the current Personal Finance courses.
- Expands CTE pathway options within Business, Marketing, and Management.
- Supports BAS Strategic Goal #2 – “Explore and Connections to Interest Areas” by exposing students to real-world business and financial careers

Certification: Teacher must hold appropriate CTE endorsement and AP Course Audit approval and potentially a vocational endorsement to open the possibility of additional Perkins/added cost funds.

Brighton Area Schools
Course Proposal Adoption Process
New Course Proposal Application

Date: 10/8/2025

Staff Proposing Course: Nadine Clark & Laura Awdish Building: BHS

Name of Course: AP SEMINAR AMERICAN LIT

Subject Area: English Grade Level: 10

Length of Course (yr/sem./trimester): YEAR

1. Course Description:

[AP Seminar](#) is a year-long foundational course that has students investigate real-world issues from multiple perspectives. Students learn to synthesize information from different sources, develop their own lines of reasoning in research-based written essays, and design and deliver oral and visual presentations, both individually and as part of a team. Ultimately, the course aims to equip students with the power to analyze and evaluate information with accuracy and precision in order to craft and communicate evidence based arguments.

2. Rationale: (Why is this course needed? How will it relate to the district/building curriculum plan?)

- Gives an AP English option for sophomores
- Research, writing and constructed argument skills support junior and senior level AP English classes
- Opens the door to potentially add the AP Capstone course and the AP diploma option in future years

3. Course Objectives: (What knowledge, skills, processes, and dispositions will students achieve because of taking this course?)

- Engage students with rigorous college-level curricula focused on the core academic skills necessary for successful college completion.
- Extend students' abilities to synthesize information from multiple perspectives and apply skills in cross-curricular contexts and in new situations.
- Empower students to collect and analyze information with accuracy and precision.
- Cultivate students' abilities to craft, communicate, and defend evidence-based arguments.
- Provide opportunities for students to practice disciplined and scholarly research skills applied to relevant topics of their interest and curiosity.

Content Objectives:

- Culture (time and place) impacts the subjects and style of an author's writing
- Effective readers, writers, and speakers engage actively with text to create meaning
- Effective readers make inferences about characters in a text

Brighton Area Schools

Course Proposal Adoption Process

- Q.U.E.S.T. Framework from College Board: Question and Explore; Understand/Analyze; Evaluate Multiple Perspectives; Synthesize Ideas; Team, Transform, Transmit

Skills Objectives:

- How to write effective constructed responses/ evidence based arguments individually and in small groups.
- How to analyze sources and evaluate evidence.
- How to engage in reflective and research based writing activities.
- How to analyze modern American texts and compare them to contemporary connections.
- How to communicate in formal discussions of literature and argument.
- How to understand context and multiple perspectives.
- How to correctly use and identify standard English grammar conventions.
- Key terms related to figurative language, literary analysis, and plot structure.

Processes Objectives:

- Develop an individual written argument
- Create and present an individual presentation related to written argument
- Orally defend argument

4. State Standards: Provide MI State Standards that will be addressed in this course:

–AP: SEMINAR (2024) - ALL covered

–MI: English Language Arts 6-12, Grades 9-10:

- Capacities of the Literate Individual - ALL
- Reading: Literature - ALL
- Reading: Informational Text - ALL
- Writing: W.9-10.1a-e; W.9-10.2a-f; W.9-10.4-8; W.9-10.9; W.9-10.9a-b; W.9-10.10
- Speaking & Listening - ALL
- Language - ALL

5. Facilities/Equipment/Materials/Certification Requirement: (What is needed to facilitate this course? What are the estimated costs in terms of materials and equipment? What certification will be required to teach this course?)

- Certification/College Board Course for teachers: Completion of AP Institute and English, Literature, and Language teaching Certification
- No new materials will be needed as course will use same reading materials as American Literature

6. Implementation Timeline: (When will the course be added to the district curriculum/course schedule? How will the implementation of the course impact other course offerings in terms of sequence/timing?)

- The course will be added in the 2026/2027 school year.
- This course will likely replace Honors American Literature.

**Brighton Area Schools
Course Proposal Adoption Process
New Course Proposal Application**

Date: 10/14/2025

Staff Proposing Course: BHS Science Dept. (John Rioux) Building: BHS

Name of Course: Earth Science

Subject Area: Science Grade Level: 10-12

Length of Course (yr/sem./trimester): Year

In the space below*, provide requested information:

1. Course Description: Earth Science is a comprehensive, laboratory-based course that explores the dynamic systems and processes that shape our planet and its place in the universe. Students investigate the structure, composition, and history of the Earth through the study of geology, meteorology, oceanography, and astronomy. Topics include the rock cycle, plate tectonics, earthquakes and volcanoes, weather and climate patterns, the water cycle, natural resources, and the interactions between Earth's systems and human activity.

Through hands-on labs, data analysis, and field investigations, students develop critical thinking, problem-solving, and scientific inquiry skills. Emphasis is placed on understanding Earth as a complex, interconnected system and recognizing the impact of human actions on environmental sustainability.

2. Rationale: (Why is this course needed? How will it relate to the district/building curriculum plan?) This class will help meet the needs of those struggling with their 3rd year science requirements. It will help the science department address the NGSS standards in a more streamlined manner.

3. Course Objectives: (What knowledge, skills, processes, and dispositions will students achieve because of taking this course?)

Content Objectives: See attachment

Skills Objectives: See attachment

Brighton Area Schools Course Proposal Adoption Process

Processes Objectives: See attachment

4. State Standards: Provide MI State Standards that will be addressed in this course:

See attachment

5. Facilities/Equipment/Materials/Certification Requirement: (What is needed to facilitate this course? What are the estimated costs in terms of materials and equipment? What certification will be required to teach this course?)

Text books with on-line addition will be required at approximately \$155 per book

Certification: DI, DX, DA

6. Implementation Timeline: (When will the course be added to the district curriculum/course schedule? How will the implementation of the course impact other course offerings in terms of sequence/timing?)

The course would be added to the curriculum during the 2026-27 school year. It would not impact other course offerings in terms of sequence/timing.

Unit Plan

Unit 1 - Earth Systems

District High / Mixed-grade High / Science

Week 1 - Week 3 | 3 Curriculum Developers | Last Updated: May 28, 2025 by Roux, John

Stage 1: Desired Results

Overarching Questions and Enduring Understandings

How does energy and matter move within and between Earth systems?

See: [Enduring Understandings: Seeing the Forest through the Trees](#)

Expectations/Standards

MI: Science (2015)

MI: High School

Earth's Systems

Earth's Systems

- HS-ESS2-2 Analyze geoscience data to make the claim that one change to Earth's surface can create feedbacks that cause changes to other Earth systems.
- HS-ESS2-3 Develop a model based on evidence of Earth's interior to describe the cycling of matter by thermal convection.
- HS-ESS2-6 Develop a quantitative model to describe the cycling of carbon among the hydrosphere, atmosphere, geosphere, and biosphere.

Copyright © 2001-2015 State of Michigan

Unit Level Standards

Essential Questions

1. How do elements cycle through the geosphere and become concentrated in economically viable quantities?
2. What approaches are used to study Earth systems?
3. How might carbon/nitrogen compounds change and move through several Earth systems?

See: [Asking Essential Questions to Inspire Lifelong Learning](#)

Content (Key Concepts)

By the end of this unit, students will know...

atmosphere
atom
biogeochemical cycles
biosphere
carbon cycle
closed system
compound
earth system science
element
geosphere
graphing
hydrosphere
latitude
longitude
matter
model
nitrogen cycle
open system

photosynthesis
respiration
scientific method (hypothesis, theory, law)
water cycle

Stage 2: Assessment Evidence

Assessments

(Formative & Summative)

Unit Assessment Tasks

Stage 3: Learning Plan

Lesson Plan Sequence

Resources

Unit Plan

Unit 2 - Earth Resources and Environmental Challenges

District High / Mixed-grade High / Science

Week 4 - Week 7 | 3 Curriculum Developers | Last Updated: May 28, 2025 by Visel, Samantha

Stage 1: Desired Results

Overarching Questions and Enduring Understandings

How does the use of resources impact Earth systems?

See: [Enduring Understandings: Seeing the Forest through the Trees](#)

Expectations/Standards

Unit Level Standards

MI: Science (2015)

MI: High School

Engineering Design

Engineering Design

- HS-ETS1-3 Evaluate a solution to a complex real-world problem based on prioritized criteria and trade-offs that account for a range of constraints, including cost, safety, reliability, and aesthetics, as well as possible social, cultural, and environmental impacts.

Energy

Energy

- HS-PS3-1 Create a computational model to calculate the change in the energy of one component in a system when the change in energy of the other component(s) and energy flows in and out of the system are known.
- HS-PS3-2 Develop and use models to illustrate that energy at the macroscopic scale can be accounted for as a combination of energy associated with the motions of particles (objects) and energy associated with the relative position of particles (objects).
- HS-PS3-3 Design, build, and refine a device that works within given constraints to convert one form of energy into another form of energy.
- HS-PS3-4 Plan and conduct an investigation to provide evidence that the transfer of thermal energy when two components of different temperature are combined within a closed system results in a more uniform energy distribution among the components in the system (second law of thermodynamics).

Earth's Systems

Earth's Systems

- HS-ESS2-3 Develop a model based on evidence of Earth's interior to describe the cycling of matter by thermal convection.
- HS-ESS2-6 Develop a quantitative model to describe the cycling of carbon among the hydrosphere, atmosphere, geosphere, and biosphere.

Human Sustainability

Human Sustainability

- HS-ESS3-1 Construct an explanation based on evidence for how the availability of natural resources, occurrence of natural hazards, and changes in climate have influenced human activity.
- HS-ESS3-2 Evaluate competing design solutions for developing, managing, and utilizing energy and mineral resources based on cost-benefit ratios.
- HS-ESS3-3 Create a computational simulation to illustrate the relationships among management of natural resources, the sustainability of human populations, and biodiversity.
- HS-ESS3-4 Evaluate or refine a technological solution that reduces impacts of human activities on natural systems.
- HS-ESS3-6 Use a computational representation to illustrate the relationships among Earth systems and how those relationships are being modified due to human activity.

Copyright © 2001-2015 State of Michigan

Essential Questions

1. What are the limitations and benefits of various energy sources for growing populations?
2. What solutions should be employed to preserve and extend resources and to minimize the impacts of human populations?
3. How does an Earth systems science perspective help to illuminate opportunities to address environmental challenges?

See: [Asking Essential Questions to Inspire Lifelong Learning](#)

Content (Key Concepts)

By the end of this unit, students will know...

- energy transformation (Chemical, mechanical, radiant, nuclear, electrical, thermal, kinetic, potential)
- non-renewable energy
- renewable energy

Stage 2: Assessment Evidence

Assessments

(Formative & Summative)

Unit Assessment Tasks

Engineering task ideas: evaluating the use of renewable or a nonrenewable energy source in terms of cost, reliability, efficiency, etc

Stage 3: Learning Plan

Lesson Plan Sequence

Resources

Unit Plan

Unit 3 - Earth Structure and Dynamics I

District High / Mixed-grade High / Science

Week 8 - Week 11 | 3 Curriculum Developers | Last Updated: May 28, 2025 by Roux, John

Stage 1: Desired Results

Overarching Questions and Enduring Understandings

How are scientific models used to explain and predict Earth phenomena?

See: [Enduring Understandings: Seeing the Forest through the Trees](#)

Expectations/Standards

Unit Level Standards

MI: Science (2015)

MI: High School

Structure and Properties of Matter

Structure and Properties of Matter

- HS-PS1-8 Develop models to illustrate the changes in the composition of the nucleus of the atom and the energy released during the processes of fission, fusion, and radioactive decay.

Forces and Interactions

Forces and Interactions

- HS-PS2-1 Analyze data to support the claim that Newton's second law of motion describes the mathematical relationship among the net force on a macroscopic object, its mass, and its acceleration.
- HS-PS2-3 Apply scientific and engineering ideas to design, evaluate, and refine a device that minimizes the force on a macroscopic object during a collision.

Waves and Electromagnetic Radiation

Waves and Electromagnetic Radiation

- HS-PS4-1 Use mathematical representations to support a claim regarding relationships among the frequency, wavelength, and speed of waves traveling in various media.
- HS-PS4-5 Communicate technical information about how some technological devices use the principles of wave behavior and wave interactions with matter to transmit and capture information and energy.

History of Earth

History of Earth

- HS-ESS1-5 Evaluate evidence of the past and current movements of continental and oceanic crust and the theory of plate tectonics to explain the ages of crustal rocks.
- HS-ESS1-6 Apply scientific reasoning and evidence from ancient Earth materials, meteorites, and other planetary surfaces to construct an account of Earth's formation and early history.
- HS-ESS2-1 Develop a model to illustrate how Earth's internal and surface processes operate at different spatial and temporal scales to form continental and ocean-floor features.

Essential Questions

1. How are seismic waves analyzed to understand the structure of the Earth?
2. What do the global distribution, silica composition, and density of igneous rocks imply about the structure and processes of the lithosphere?

See: [Asking Essential Questions to Inspire Lifelong Learning](#)

Content (Key Concepts)

By the end of this unit, students will know...

Alfred Wegener
asthenosphere
continental collision
continental crust
continental drift
convection
crust
density
divergent
elastic rebound theory
inner core
lithosphere
magnetic field
mantle
mid-ocean ridges
mountain ranges (fault block, volcanic, dome, folded)
oceanic crust
outer core
Pangaea
plate
Plate Tectonic Theory
polarity reversal
radioactive decay
rift
rift valley
rock cycle (igneous, metamorphic, sedimentary)
sea floor spreading
seismic waves (P,S)
shadow zone
slab pull
subduction zone
trench

Stage 2: Assessment Evidence

Assessments

(Formative & Summative)

Unit Assessment Tasks

Stage 3: Learning Plan

Lesson Plan Sequence

Resources

Unit Plan

Unit 4 - Dynamics of the Solid Earth II

District High / Mixed-grade High / Science

Week 12 - Week 15 | 3 Curriculum Developers | Last Updated: May 28, 2025 by Rioux, John

Stage 1: Desired Results

Overarching Questions and Enduring Understandings

How are scientific models built and used to explain and predict phenomena of the solid Earth?

See: [Enduring Understandings: Seeing the Forest through the Trees](#)

Expectations/Standards

Unit Level Standards

MI: Science (2015)

MI: High School

Engineering Design

Engineering Design

- HS-ETS1-4 Use a computer simulation to model the impact of proposed solutions to a complex real-world problem with numerous criteria and constraints on interactions within and between systems relevant to the problem.

Forces and Interactions

Forces and Interactions

- HS-PS2-1 Analyze data to support the claim that Newton's second law of motion describes the mathematical relationship among the net force on a macroscopic object, its mass, and its acceleration.
- HS-PS2-3 Apply scientific and engineering ideas to design, evaluate, and refine a device that minimizes the force on a macroscopic object during a collision.

Earth's Systems

Earth's Systems

- HS-ESS2-2 Analyze geoscience data to make the claim that one change to Earth's surface can create feedbacks that cause changes to other Earth systems.
- HS-ESS2-3 Develop a model based on evidence of Earth's interior to describe the cycling of matter by thermal convection.
- HS-ESS2-5 Plan and conduct an investigation of the properties of water and its effects on Earth materials and surface processes.
- HS-ESS2-6 Develop a quantitative model to describe the cycling of carbon among the hydrosphere, atmosphere, geosphere, and biosphere.
- HS-ESS2-7 Construct an argument based on evidence about the simultaneous coevolution of Earth's systems and life on Earth.

History of Earth

History of Earth

- HS-ESS1-5 Evaluate evidence of the past and current movements of continental and oceanic crust and the theory of plate tectonics to explain the ages of crustal rocks.
- HS-ESS2-1 Develop a model to illustrate how Earth's internal and surface processes operate at different spatial and temporal scales to form continental and ocean-floor features.

Copyright © 2001-2015 State of Michigan

Essential Questions

1. What type of plate boundary can be deduced from a given pattern of earthquakes and volcanoes?
2. How do patterns of surface rocks, ocean bathymetry, earthquakes and the distribution of volcanoes relate to the characteristics of Earth's tectonic plates?
3. How can society minimize risk from earthquakes and volcanoes?

See: [Asking Essential Questions to Inspire Lifelong Learning](#)

Content (Key Concepts)

By the end of this unit, students will know...

aftershock
 cinder cone
 composite (strato-volcano)
 earthquakes
 epicenter
 fault (normal, reverse, thrust, strike-slip)
 fissure
 focus
 fracture zone
 hot spot
 igneous (intrusive, extrusive, texture, felsic, mafic)
 lava plateau
 liquefaction
 lithosphere
 Mercalli Intensity Scale
 metamorphic (foliation)
 pluton (batholith, laccolith, stock, sill, dike)
 pyroclastic flow
 Richter Magnitude Scale
 ridge push
 seamount
 seismic waves (body, surface, P, S, L, R)
 seismogram
 seismograph
 shield
 stress (tension, shear, compression)
 tephra (ash, lapilli, block, bomb)
 transform
 vent
 viscosity
 volcanoes

Stage 2: Assessment Evidence

Assessments

(Formative & Summative)

Unit Assessment Tasks

Engineering task idea:

Use a simulation (e.g., [Shake Platform Simulators](#) or free physics engines) to design buildings that withstand earthquakes.

- **Problem:** Infrastructure damage during seismic events.
- **Constraints:** Budget, materials, location, population density.

Stage 3: Learning Plan

Lesson Plan Sequence

Resources

Unit Plan

Unit 5 - Sustaining Water Resources

District High / Mixed-grade High / Science

Week 16 - Week 19 | 3 Curriculum Developers | Last Updated: May 28, 2025 by Rioux, John

Stage 1: Desired Results

Overarching Questions and Enduring Understandings

How can scientific research help societies manage resources and risks to human health and safety?

See: [Enduring Understandings: Seeing the Forest through the Trees](#)

Expectations/Standards

Unit Level Standards

MI: Science (2015)

MI: High School

Engineering Design

Engineering Design

- HS-ETS1-2 Design a solution to a complex real-world problem by breaking it down into smaller, more manageable problems that can be solved through engineering.

Earth's Systems

Earth's Systems

- HS-ESS2-5 Plan and conduct an investigation of the properties of water and its effects on Earth materials and surface processes.

Human Sustainability

Human Sustainability

- HS-ESS3-1 Construct an explanation based on evidence for how the availability of natural resources, occurrence of natural hazards, and changes in climate have influenced human activity.
- HS-ESS3-3 Create a computational simulation to illustrate the relationships among management of natural resources, the sustainability of human populations, and biodiversity.
- HS-ESS3-4 Evaluate or refine a technological solution that reduces impacts of human activities on natural systems.
- HS-ESS3-6 Use a computational representation to illustrate the relationships among Earth systems and how those relationships are being modified due to human activity.

Copyright © 2001-2015 State of Michigan

Essential Questions

1. How do components of the hydrosphere compare?
2. How have land use practices in your watershed affected stream water quality?
3. How have human endeavors impacted water resources?

Content (Key Concepts)

By the end of this unit, students will know...

aquifer
dams (impoundment, run of the river)
discharge
drainage basin

- 4. How is an Earth systems science perspective be used to understand issues related to water resources?
- 5. What is the origin and final destination of household water?

drainage divide
erosion (wind, water, ice)
flood prevention
glacier
Great Lakes
ground water
headwaters
ice sheet
land use
mouth
permeability
porosity
recharge
reservoir
residence time
river (tributary, stream, creek, confluence, delta, alluvial fan, meander, oxbow lake, flood plain)
runoff
sedimentary rocks (clastic, organic, chemical)
surface water
sustainability
water cycle
water quality
water quality parameters (e.g., dissolved oxygen, temperature, turbidity or nitrates, macroinvertebrates)
water quantity
watershed
water table
water treatment (coagulation, flocculation, sedimentation, chlorination, aeration,
weathering
wetland

See: [Asking Essential Questions to Inspire Lifelong Learning](#)

Stage 2: Assessment Evidence

Assessments

(Formative & Summative)

Unit Assessment Tasks

Engineering task Idea: Using rain barrels to use water more sustainably

Stage 3: Learning Plan

Lesson Plan Sequence

Resources

Unit Plan

Unit 6 - Earth's Place in the Universe

District High / Mixed-grade High / Science

Week 20 - Week 23 | 3 Curriculum Developers | Last Updated: May 28, 2025 by Visel, Samantha

Stage 1: Desired Results

Overarching Questions and Enduring Understandings

How do Ideas in modern physics provide tools to study Earth and the universe?

See: [Enduring Understandings: Seeing the Forest through the Trees](#)

Expectations/Standards

Unit Level Standards

MI: Science (2015)

MI: High School

Forces and Interactions

Forces and Interactions

- HS-PS2-1 Analyze data to support the claim that Newton's second law of motion describes the mathematical relationship among the net force on a macroscopic object, its mass, and its acceleration.
- HS-PS2-2 Use mathematical representations to support the claim that the total momentum of a system of objects is conserved when there is no net force on the system.
- HS-PS2-3 Apply scientific and engineering ideas to design, evaluate, and refine a device that minimizes the force on a macroscopic object during a collision.
- HS-PS2-4 Use mathematical representations of Newton's Law of Gravitation and Coulomb's Law to describe and predict the gravitational and electrostatic forces between objects.
- HS-PS2-5 Plan and conduct an investigation to provide evidence that an electric current can produce a magnetic field and that a changing magnetic field can produce an electric current.

Waves and Electromagnetic Radiation

Waves and Electromagnetic Radiation

- HS-PS4-1 Use mathematical representations to support a claim regarding relationships among the frequency, wavelength, and speed of waves traveling in various media.
- HS-PS4-2 Evaluate questions about the advantages of using a digital transmission and storage of information.
- HS-PS4-3 Evaluate the claims, evidence, and reasoning behind the idea that electromagnetic radiation can be described either by a wave model or a particle model, and that for some situations one model is more useful than the other.
- HS-PS4-4 Evaluate the validity and reliability of claims in published materials of the effects that different frequencies of electromagnetic radiation have when absorbed by matter.
- HS-PS4-5 Communicate technical information about how some technological devices use the principles of wave behavior and wave interactions with matter to transmit and capture information and energy.

Copyright © 2001-2015 State of Michigan

Essential Questions

1. How do we study the universe?
2. How did the discoveries of early scientists influence society?
3. What experimental methods and evidence support the Big Bang Theory?
4. What evidence exists to build models of the history of the universe?
5. How do observations of the Milky Way Galaxy correlate with theories of the history of the universe?

See: [Asking Essential Questions to Inspire Lifelong Learning](#)

Content (Key Concepts)

By the end of this unit, students will know...

astronomical unit
 Big Bang Theory
 cosmic microwave background radiation (CMBR)
 cosmological red shift
 cosmology
 Doppler shift
 Edwin Hubble
 electromagnetic spectrum
 history of astronomy
 Hubble's Law
 light year
 Milky Way Galaxy
 nebula
 Nebular Theory (origin of our solar system)
 parallax
 parsec
 spiral arm
 star system (solar system)
 telescope (gamma ray, microwave, radio, infrared, x-ray, visible light, u-v ray)

Stage 2: Assessment Evidence

Assessments

(Formative & Summative)

Unit Assessment Tasks

Stage 3: Learning Plan

Lesson Plan Sequence

Resources

Unit Plan

Unit 7 - Our Sun and Other Stars

District High / Mixed-grade High / Science

Week 24 - Week 28 | 3 Curriculum Developers | Last Updated: May 28, 2025 by Rioux, John

Stage 1: Desired Results

Overarching Questions and Enduring Understandings

How does the sun compare to other stars in the universe in terms of origin, mass, temperature, age, Spectral class (color), brightness (magnitude, luminosity) and eventual death?

See: [Enduring Understandings: Seeing the Forest through the Trees](#)

Expectations/Standards

Unit Level Standards

MI: Science (2015)

MI: High School

Space Systems

Space Systems

- HS-ESS1-1 Develop a model based on evidence to illustrate the life span of the sun and the role of nuclear fusion in the sun's core to release energy that eventually reaches Earth in the form of radiation.
- HS-ESS1-2 Construct an explanation of the Big Bang theory based on astronomical evidence of light spectra, motion of distant galaxies, and composition of matter in the universe.
- HS-ESS1-3 Communicate scientific ideas about the way stars, over their life cycle, produce elements.
- HS-ESS1-4 Use mathematical or computational representations to predict the motion of orbiting objects in the solar system.

History of Earth

History of Earth

- HS-ESS1-6 Apply scientific reasoning and evidence from ancient Earth materials, meteorites, and other planetary surfaces to construct an account of Earth's formation and early history.

Copyright © 2001-2015 State of Michigan

Essential Questions

1. How do stars change over time?
2. How does the study and analysis of sun help us model processes of stars?
3. How do solar activities affect Earth?
4. What can a Hertzsprung-Russell (H-R) diagram tell us about stars?
5. How are elements and energy produced by stars?
6. How does the origin of a star determine its fate?

Content (Key Concepts)

By the end of this unit, students will know...

absolute magnitude (brightness)
 apparent magnitude (brightness)
 Aurora Borealis/Australis
 black hole
 cepheid variable
 cluster
 equilibrium

See: [Asking Essential Questions to Inspire Lifelong Learning](#)

- giant
- gravity
- Hertzsprung-Russell (H-R) diagram
- hydrogen
- helium
- layers of the sun (core, radiation zone, convective zone, photosphere, chromosphere, corona)
- luminosity
- main sequence
- nuclear fusion
- neutron star
- photons
- prominence
- pulsar
- red dwarf
- spectral class
- spectroscopy
- stellar evolution
- solar activities (sunspots sunspot cycle, solar flares, solar wind)
- solar neighborhood
- supercluster
- supergiant
- supernova
- transformation of elements
- white dwarf

Stage 2: Assessment Evidence

Assessments

Unit Assessment Tasks

(Formative & Summative)

Stage 3: Learning Plan

Lesson Plan Sequence

Resources

Unit Plan

Unit 8 - Discerning Earth's History

District High / Mixed-grade High / Science

Week 29 - Week 31 | 3 Curriculum Developers | Last Updated: May 28, 2025 by Visel, Samantha

Stage 1: Desired Results

Overarching Questions and Enduring Understandings

How does an understanding of natural processes enable scientists to discern sequences of events and rates of change?

See: [Enduring Understandings: Seeing the Forest through the Trees](#)

Expectations/Standards

Unit Level Standards

MI: Science (2015)

MI: High School

Structure and Properties of Matter

Structure and Properties of Matter

- HS-PS1-8 Develop models to illustrate the changes in the composition of the nucleus of the atom and the energy released during the processes of fission, fusion, and radioactive decay.

Forces and Interactions

Forces and Interactions

- HS-PS2-5 Plan and conduct an investigation to provide evidence that an electric current can produce a magnetic field and that a changing magnetic field can produce an electric current.

Energy

Energy

- HS-PS3-5 Develop and use a model of two objects interacting through electric or magnetic fields to illustrate the forces between objects and the changes in energy of the objects due to the interaction.

Earth's Systems

Earth's Systems

- HS-ESS2-7 Construct an argument based on evidence about the simultaneous coevolution of Earth's systems and life on Earth.

Natural Selection and Adaptations

Natural Selection and Evolution

- HS-LS4-1 Communicate scientific information that common ancestry and biological evolution are supported by multiple lines of empirical evidence.
- HS-LS4-5 Evaluate the evidence supporting claims that changes in environmental conditions may result in: (1) increases in the number of individuals of some species, (2) the emergence of new species over time, and (3) the extinction of other species.

History of Earth

History of Earth

- HS-ESS1-5 Evaluate evidence of the past and current movements of continental and oceanic crust and the theory of plate tectonics to explain the ages of crustal rocks.
- HS-ESS1-6 Apply scientific reasoning and evidence from ancient Earth materials, meteorites, and other planetary surfaces to construct an account of Earth's formation and early history.

Copyright © 2001-2015 State of Michigan

Essential Questions

1. What is the geologic time scale and how was it created?
2. What is the sequence of major events in Earth history and how are they dated?
3. Compare and contrast relative and absolute time/dating?
4. How are fossils used in discerning Earth history?

See: [Asking Essential Questions to Inspire Lifelong Learning](#)

Content (Key Concepts)

By the end of this unit, students will know...

absolute age/time
 dating
 daughter isotope
 evolution from fossil records
 fossils (original remains, replaced remains, casts, molds, carbon Imprint, trace)
 Geologic Time Scale (GTS; eon, era, period, epoch)
 half-life
 inclusions/law of embedded fragments
 Index fossils
 Law of Superposition
 mass extinction
 paleomagnetism
 paleontology
 parent isotope
 Principle of Original Horizontality
 radioactive isotopes
 radiocarbon dating
 radiometric dating
 radioactivity
 relative age dating
 relative age/time
 relative age
 rock correlation
 sedimentary rocks
 stratigraphic principles
 stratigraphy
 unconformities
 uniform processes

Stage 2: Assessment Evidence

Assessments

(Formative & Summative)

Unit Assessment Tasks

Stage 3: Learning Plan

Lesson Plan Sequence

Resources

Unit Plan

Unit 9 - Earth's Oceans, Weather, and Climate

District High / Mixed-grade High / Science

Week 32 - Week 35 | 3 Curriculum Developers | Last Updated: May 28, 2025 by Rioux, John

Stage 1: Desired Results

Overarching Questions and Enduring Understandings

How does the transference and transformation of energy drive weather and climatic processes on Earth?

See: [Enduring Understandings: Seeing the Forest through the Trees](#)

Expectations/Standards

MI: Science (2015)

MI: High School

Earth's Systems

Earth's Systems

- HS-ESS2-6 Develop a quantitative model to describe the cycling of carbon among the hydrosphere, atmosphere, geosphere, and biosphere.

Weather and Climate

Weather and Climate

- HS-ESS2-4 Use a model to describe how variations in the flow of energy into and out of Earth's systems result in changes in climate.
- HS-ESS3-5 Analyze geoscience data and the results from global climate models to make an evidence-based forecast of the current rate of global or regional climate change and associated future impacts to Earth systems.

Copyright © 2001-2015 State of Michigan

Unit Level Standards

Essential Questions

1. How does energy move through Earth systems to influence weather & climate?
2. How do prevailing winds, ocean currents, and geographic factors control regional climates?
3. What are the causes and effects of severe weather events?
4. What factors control regional climate?
5. What is the greenhouse effect and what causes it?

See: [Asking Essential Questions to Inspire Lifelong Learning](#)

Content (Key Concepts)

By the end of this unit, students will know...

adiabatic cooling/adiabatic temperature changes
 air masses (cP, cT, mP, mT, cA)
 atmosphere layers (tropo, strato, meso, thermo, exo)
 blizzard
 climate controls (latitude, altitude, nearness to bodies of water, etc)
 climate
 cloud formation (mountain uplift/topographic lifting)
 CO₂ reservoir (sink)
 convection/convergence
 coriolis effect
 eye
 eye wall
 frontal wedging (dry lines)
 fronts (cold, warm front, stationary, occluded)
 Fujita Scale

- global winds
- greenhouse effect (Greenhouse gases, Infrared rays, Ultraviolet rays)
- halocline
- heat transfer
- hurricane
- mesocyclone
- meteorology
- ocean currents (surface, deep)
- ocean layers (mixed, middle zone, deep)
- pressure (high, low)
- prevalling winds
- pycnocline
- Saffir-Simpson Scale
- salinity
- severe weather conditions (heavy rain, lightning, hail, flooding, wind shear, downbursts, storm surge)
- solar radiation
- squall line
- stratospheric ozone
- thermocline
- thermohalinecirculation
- thunderstorm
- tornado
- updraft
- warning/watch
- weather
- weather station

Stage 2: Assessment Evidence

Assessments

(Formative & Summative)

Unit Assessment Tasks

Stage 3: Learning Plan

Lesson Plan Sequence

Resources

Unit Plan

Unit 10 - Earth's Changing Climate

District High / Mixed-grade High / Science

Week 36 - Week 37 | 3 Curriculum Developers | Last Updated: May 28, 2025 by Rioux, John

Stage 1: Desired Results

Overarching Questions and Enduring Understandings

How has climate changed over time?

See: [Enduring Understandings: Seeing the Forest through the Trees](#)

Expectations/Standards

Unit Level Standards

MI: Science (2015)

MI: High School

Engineering Design

Engineering Design

- HS-ETS1-1 Analyze a major global challenge to specify qualitative and quantitative criteria and constraints for solutions that account for societal needs and wants.

Earth's Systems

Earth's Systems

- HS-ESS2-7 Construct an argument based on evidence about the simultaneous coevolution of Earth's systems and life on Earth.

Weather and Climate

Weather and Climate

- HS-ESS2-4 Use a model to describe how variations in the flow of energy into and out of Earth's systems result in changes in climate.
- HS-ESS3-5 Analyze geoscience data and the results from global climate models to make an evidence-based forecast of the current rate of global or regional climate change and associated future impacts to Earth systems.

Human Sustainability

Human Sustainability

- HS-ESS3-1 Construct an explanation based on evidence for how the availability of natural resources, occurrence of natural hazards, and changes in climate have influenced human activity.
- HS-ESS3-4 Evaluate or refine a technological solution that reduces impacts of human activities on natural systems.
- HS-ESS3-6 Use a computational representation to illustrate the relationships among Earth systems and how those relationships are being modified due to human activity.

Copyright © 2001-2015 State of Michigan

Essential Questions

Content (Key Concepts)

- 1. What evidence exists that Earth's climate is changing more rapidly than in the past?
- 2. What are the natural mechanisms that determine global climatic trends?
- 3. How are Earth's spheres interconnected regarding climate change?
- 4. How will predicted climate change affect specific regions?
- 5. How have humans impacted climate over the past 100 years?

By the end of this unit, students will know...

- biogeochemical cycles
- climate models
- climatic trends
- evidence (fossils, sea levels, polar ice caps, ice core data, varves, ice age geomorphology-glacial lakes, eskers, kames, moraines, erratics, drumlins, striations, outwash plain)
- emissions (carbon dioxide, methane, nitrous oxide, cfc's)
- global warming
- greenhouse effect
- heat trapping capacity
- natural mechanisms (asteroids, volcanoes, sun spots, milankovich hypothesis, c. drift, CO2 levels, cosmic dust)
- paleoclimatology

See: [Asking Essential Questions to Inspire Lifelong Learning](#)

Stage 2: Assessment Evidence

Assessments

(Formative & Summative)

Unit Assessment Tasks

Engineering task: In terms of climate change, global warming

Stage 3: Learning Plan

Lesson Plan Sequence

Resources

BRIGHTON AREA SCHOOLS
Board of Education
November 10, 2025

For Information

Finance:

1. Bills for payment of October 10 - 24, 2025.

Check Register
Run Date: 10/10/2025

Brighton Public Schools

CheckNo	CkDate	Vendor	Name	PO #	Account	Description	Amount	CheckAmt
REGULAR CHECKS								
033144	10/10/25	00393	AT&T		11-261-3412-000-000-0000	INTERNET SEPT	411.00	411.00
033145	10/10/25	06150	BEECHWOOD LLC		11-261-4124-000-000-0000	SPENCER TREE REMOVAL	2,700.00	2,700.00
033146	10/10/25	06188	BEHIND YOUR DESIGN		11-232-3190-000-000-0000	MARKETING SEPT/WEBSI	3,200.00	3,200.00
033147	10/10/25	06550	BEST PLUMBING SPECIALTIES INC	43060 C	11-261-5992-031-000-4470	VERSAFILTER	358.36	
				43073 C	11-261-5994-000-000-0000	CIRCULATOR PUMP	524.29	882.65
033148	10/10/25	07308	BRIGHTON FORD	43098 C	11-261-4130-000-000-0000	F250 REPAIRS	1,607.44	
					21-297-4130-000-000-0000	OIL CHANGE	54.04	1,661.48
033149	10/10/25	13124	BULLSEYE PEST SOLUTIONS	43069 C	11-261-4125-000-000-0000	BHS PEST CONTROL	650.00	650.00
033150	10/10/25	08660	CANADA DRY BOTTLING CO	43076 C	21-296-7920-031-750-0000	STORE DRINKS	674.55	674.55
033151	10/10/25	09670	CITY OF BRIGHTON		11-231-4910-000-000-0000	BD MEETING SECURITY	224.58	
					11-266-3190-031-000-2491	SRO 10/1	8,451.30	
				43087 C	11-293-3191-000-004-0000	SEPT FBALL SECURITY	4,089.40	12,765.28
033152	10/10/25	11809	D & M COFFEE INC	43078 C	21-296-7920-031-750-0000	STORE HOT DRINKS	167.80	167.80
033153	10/10/25	13448	DATA DELIVERY SERVICE		21-297-6410-000-000-0000	MALTBY COUNTERS	250.00	250.00
033154	10/10/25	13599	DIGITAL AGE TECHNOLOGIES INC	43063 C	11-113-4120-031-000-0000	MONITOR INSTALL	250.00	
				41946 C	11-113-6410-031-000-0000	BHS FLAT PANNEL	31,140.00	
				43066 C	11-113-6410-031-000-0000	SCIENCE LAB TV	3,025.00	
				42252 C	11-284-4120-000-000-0000	LED PANEL INSTALLATI	13,550.00	47,965.00
033155	10/10/25	13869	DRIVERGENT, INC	43061 C	11-293-4920-000-000-0000	TRIPS	405.00	405.00
033156	10/10/25	11871	DTE ENERGY		11-261-5520-001-000-0000	HAWK STREETLITE SEPT	105.30	
					11-261-5520-121-000-0000	IPF ELECT 9/3-10/1	3,505.62	3,610.92
033157	10/10/25	15480	EASTERN MICHIGAN UNIV	43090 C	11-113-3710-031-000-0000	C PRUSKI TUIT	800.00	800.00
033158	10/10/25	13941	EMERICK DEE	43094 C	21-296-7920-031-015-0000	CHOIR HELP	200.00	200.00
033159	10/10/25	13936	ENVIRONMENTAL WOOD SOLUTIO		11-261-4125-000-000-0000	TRNS WASTE OPEN TOP	390.00	390.00
033160	10/10/25	13608	ROBERT EVANS	43083 C	21-296-7920-031-015-0000	PERFORMANCE RECORDIN	300.00	300.00
033161	10/10/25	26145	HAL LEONARD CORP	43091 C	11-111-5110-004-036-0000	EEMCSB DOWNLOAD	299.00	299.00
033162	10/10/25	31580	IAN KINDER LLC		21-137-3110-000-000-0000	SITTER SAFE	837.00	837.00
033163	10/10/25	13222	IMPACT SPORTS PERFORMANCE	43092 C	11-293-3131-000-000-0000	ADDL CONDITIONING HO	19,080.00	
				43080 C	11-293-3131-000-000-0000	SEPT CONDITIONING	5,208.33	24,288.33
033164	10/10/25	35900	LAWSON PRODUCTS	43075 C	11-261-5992-000-000-0000	NUTS/SCREWS	404.32	404.32
033165	10/10/25	36515	LEGACY CENTER LLC		21-321-7410-000-012-0000	FRI NIGHT LEAGUE	2,250.00	2,250.00
033166	10/10/25	38523	MACMILLAN HOLDINGS LLC	42970 C	11-113-5210-031-000-0000	PSYCH BOOKS	410.59	410.59
033167	10/10/25	38690	MARSHALL MUSIC CO		11-111-5110-000-006-0000	JACKSON CHRIST SUPPL	1,171.69	
					11-112-4120-021-000-0000	CLR REPAIR	70.00	
					11-112-4120-021-000-0000	TRB REPAIRS	148.00	
					11-112-4120-021-000-0000	BAR REPAIR	320.00	
					11-112-4120-121-000-0000	TROMBONE REPAIR	148.00	
					11-112-4120-121-000-0000	BASS CLAR REPAIR	103.00	
					11-112-4120-121-000-0000	TBN REPAIR	198.00	
					11-112-4120-121-000-0000	BASSOON REPAIR	163.00	

Check Register
Run Date: 10/10/2025

Brighton Public Schools

CheckNo	CkDate	Vendor	Name	PO #	Account	Description	Amount	CheckAmt
					11-112-4120-121-000-0000	TROMBONE REPAIR	243.00	2,564.69
033168	10/10/25	41340	MERIDIAN WINDS LLC	42814 P	11-113-4120-031-021-0000	INSTR STAND	95.00	
				42814 P	11-113-4120-031-021-0000	EUPH REPAIR	180.00	
				42814 P	11-113-4120-031-021-0000	SOUSA REPAIR	233.00	
				42814 P	11-113-4120-031-021-0000	BASS CLAR REPAIR	120.00	628.00
033169	10/10/25	44666	MI SCHL BAND & ORCH ASSN		11-113-5110-031-038-0000	MEMBERSHIP REG	375.00	
					11-113-5110-031-038-0000	BAND FEST REGISTER	150.00	525.00
033170	10/10/25	13777	MIDWEST CONTRACTING CO LLC		11-113-6410-031-000-0000	BHS SCIENCE ROOMS	61,098.32	61,098.32
033171	10/10/25	52900	PEARSON EDUCATION INC	42620 C	11-113-5210-031-000-0000	BIO BOOKS	4,941.00	
				42830 C	11-127-5110-031-550-3440	ACCESS CODE CARD	2,592.00	7,533.00
033172	10/10/25	13162	PEOPLE DRIVEN TECHNOLOGY, IN	43012 C	11-284-3450-000-000-0000	DELL RENEWALS	11,714.16	11,714.16
033173	10/10/25	54800	PRAIRIE FARMS DAIRY		21-297-5611-000-000-0000	MILK SEPT	18,218.65	18,218.65
033174	10/10/25	54875	PRECISION DATA PRODUCTS INC		11-111-5110-000-006-0000	ST MATTHEW SUPPLIES	378.00	378.00
033175	10/10/25	55308	QUICK SILVER MARKETING		21-321-5990-000-009-0000	CUSTOM HATS	650.00	
					21-321-5990-000-009-0000	POSTERS	64.00	
					21-321-5990-000-009-0000	EMBROIDERY	200.76	
					21-321-7410-000-015-0000	PLAQUE	54.00	968.76
033176	10/10/25	13091	RESCOM DOOR	43089 C	11-261-4110-000-000-0000	FBALL FIELD DOOR REP	210.00	210.00
033177	10/10/25	60115	STEVEN H SCHULTE	43079 C	21-296-7920-031-000-0000	PIANO COVER	133.00	
				43079 C	21-296-7920-031-015-0000	PIANO COVER	267.00	400.00
033178	10/10/25	65310	STAPLES		11-111-5110-000-006-0000	GRNDVL CHRIST SUPPLI	448.93	
					11-111-5110-000-006-0000	GRNDVL CHRIST SUPPLI	83.01	531.94
033179	10/10/25	65710	STATE OF MICHIGAN		11-261-7410-000-000-0000	BHS BOILER INSPECT	75.00	75.00
033180	10/10/25	13100	DIANE STEEH		21-391-4913-000-000-0000	SENIOR YOGA	1,431.50	1,431.50
033181	10/10/25	13771	UNITED CUSTOM DISTRIBUTION	43064 C	21-296-7920-031-750-0000	STORE CANDY	2,127.10	2,127.10
033182	10/10/25	82158	WHMI 93.5 FM		11-231-3510-000-000-0000	GAME/WEEK ADS	900.00	900.00
033183	10/10/25	84519	WASTE MANAGEMENT		11-261-4125-000-000-0000	WASTE PICKUP OCT	5,994.61	5,994.61
033184	10/10/25	84544	WATER TECH	43088 C	11-261-4122-000-000-0000	WATER TESTING	312.00	312.00
033185	10/10/25	87198	WEST MICHIGAN BASEBALL FRAN	43077 C	21-296-7920-031-750-0000	STORE DIPPIN DOTS	774.72	774.72
033186	10/10/25	MSC55	ADAM QUAIL		21-321-7410-000-026-0000	ADAM QUAIL	70.00	70.00
033187	10/10/25	MSC55	BRIDGET MARCOLA		21-321-7410-000-012-0000	BRIDGET MARCOLA	275.00	275.00
033188	10/10/25	MSC55	CORBIN TENORIO		21-321-7410-000-026-0000	CORBIN TENORIO	50.00	50.00
033189	10/10/25	MSC55	KATIE DUNCAN		21-321-7410-000-012-0000	KATIE DUNCAN	450.00	450.00
033190	10/10/25	MSC55	KELSEY FANSLAU		21-351-7411-000-000-0000	KELSEY FANSLAU	107.50	107.50
033191	10/10/25	MSC55	RICHARD STONE		21-321-7410-000-026-0000	RICHARD STONE	50.00	50.00
033192	10/10/25	MSC60	MAIZIE CAVANAUGH	43074 C	21-296-7920-031-400-0000	MAIZIE CAVANAUGH	59.97	59.97

Sub Total: \$222,970.84

ACH CHECKS

A09486	10/10/25	38520	ACADEMIC ENRICHMENT LLC		21-137-3110-000-000-0000	AFTER SCHL SPY ACAD	950.00	950.00
A09487	10/10/25	00930	ADVANCED WATER	43068 C	11-261-5994-000-000-0000	SOLAR SALT	910.35	910.35

Check Register
Run Date: 10/10/2025

Brighton Public Schools

CheckNo	CkDate	Vendor	Name	PO #	Account	Description	Amount	CheckAmt
A09488	10/10/25	13121	AJD PIZZA MANAGEMENT		21-297-5610-000-000-0000	PIZZA SEPT	13,068.00	13,068.00
A09489	10/10/25	04146	APPLE COMPUTER INC	42972 C	11-284-5910-000-000-0000	IPADS	4,029.50	4,029.50
A09490	10/10/25	05235	BSN SPORTS INC	43097 C	11-293-5990-000-011-0000	GYM MAT TAPE	362.52	
				43086 C	11-293-5990-000-018-0000	BATPACKS	1,500.00	
				43097 C	11-293-5990-021-013-0000	GYM MAT TAPE	362.52	
				43084 C	21-296-5991-000-004-0000	FBALL WHITE PANTS	1,192.86	
				43096 C	21-296-5991-000-011-0000	PINK JERSEYS	1,582.26	
				43095 C	21-296-5991-000-012-0000	PINK JERSEY	687.94	
				43081 C	21-296-5991-000-015-0000	UNIFORMS	2,247.00	
				43082 C	21-296-5991-000-015-0000	REV JERSEYS	1,179.68	
				43086 C	21-296-5991-000-032-0000	BATPACKS	4,255.80	13,370.58
A09491	10/10/25	10069	CLEAR RATE COMMUNICATIONS IN		11-261-3410-001-000-0000	HAWK PHONE OCT	215.78	
					11-261-3410-004-000-0000	SPEN PHONE OCT	215.78	
					11-261-3410-005-000-0000	HRNG PHONE OCT	207.68	
					11-261-3410-006-000-0000	HILT PHONE OCT	215.78	
					11-261-3410-021-000-0000	SCRN PHONE OCT	299.39	
					11-261-3410-031-000-0000	BHS PHONE OCT	944.02	
					11-261-3410-121-000-0000	MALT PHONE OCT	302.09	
					11-261-3411-000-000-0000	TRNS PHONE OCT	45.84	
					11-261-3412-000-000-0000	TECH PHONES OCT	167.23	
					21-261-3410-002-000-0000	MILLER PHONE OCT	215.78	2,829.37
A09492	10/10/25	11808	D M BURR SECURITY		11-261-3150-000-000-0000	BANKCOURIER 10/3	102.80	102.80
A09493	10/10/25	13938	EVERWAY HOLDCO	43051 C	11-122-5110-001-194-0000	READ&WRITE SFTWR	306.22	
				43051 C	11-122-5110-004-194-0000	READ&WRITE SFTWR	306.22	
				43051 C	11-122-5110-005-194-0000	READ&WRITE SFTWR	306.22	
				43051 C	11-122-5110-006-194-0000	READ&WRITE SFTWR	306.22	
				43051 C	11-122-5110-021-194-0000	READ&WRITE SFTWR	306.18	
				43051 C	11-122-5110-031-194-0000	READ&WRITE SFTWR	306.22	
				43051 C	11-122-5110-121-194-0000	READ&WRITE SFTWR	306.22	2,143.50
A09494	10/10/25	22765	GELARDI PRODUCE CO		21-297-5610-000-000-0000	PRODUCE SEPT	10,992.62	10,992.62
A09495	10/10/25	13137	LINDE GAS & EQUIPMENT	43072 C	11-127-4120-031-550-3440	SHOP GAS	176.35	176.35
A09496	10/10/25	37127	LINDHOUT ASSOCIATES		11-261-6410-200-000-0000	BECC BATHROOM WALKTH	447.00	
					11-271-8221-000-000-0000	TRNS WORK WALKTHROUG	74.50	521.50
A09497	10/10/25	37640	LIVINGSTON COUNTY MECHANICA	43062 C	11-261-4123-000-000-0000	HVAC 9/29-10/3	2,160.00	2,160.00
A09498	10/10/25	13796	MAUREEN KIMMEL		21-137-3110-000-000-0000	PIE CLASS	720.00	720.00
A09499	10/10/25	39190	MCGRAW-HILL EDUCATION INC	42835 C	11-113-5210-031-000-0000	STUDENT BOOKS	7,745.89	
				42619 C	11-113-5210-031-000-0000	SUBSCRIPTION BOOKS	41,584.86	49,330.75
A09500	10/10/25	44930	MICHIGAN VIRTUAL		11-111-3220-000-006-0000	SHARED SERV CONF	360.00	
					11-111-3220-000-006-0000	SHARED SERV COLLAB	500.00	860.00
A09501	10/10/25	45710	MILLCRAFT PAPER COMPANY	43065 C	11-127-5110-031-562-3440	WHITE PAPER	596.47	596.47
A09502	10/10/25	49500	NEWSELA, INC.	43015 C	11-111-5210-001-000-0000	NEWSELA ELA	1,644.51	

Check Register
Run Date: 10/10/2025

CheckNo	CkDate	Vendor	Name	PO #	Account	Description	Amount	CheckAmt
				43015 C	11-111-5210-004-000-0000	NEWSELA ELA	1,633.30	
				43015 C	11-111-5210-005-000-0000	NEWSELA ELA	1,696.02	
				43015 C	11-111-5210-006-000-0000	NEWSELA ELA	1,565.73	
				43015 C	11-112-5210-021-000-0000	NEWSELA ELA	6,814.64	
				43015 C	11-112-5210-121-000-0000	NEWSELA ELA	2,518.24	
				43015 C	11-113-5210-031-000-0000	NEWSELA ELA	5,838.94	21,711.38
A09503	10/10/25	51360	NORTHLAND SERVICES LLC		11-261-4124-000-000-0000	MONTHLY MAINT	27,000.00	27,000.00
A09504	10/10/25	53375	J W PEPPER & SON INC		11-111-5110-000-006-0000	CALVIN CHRIST SUPPLI	198.80	
				42815 P	11-113-5110-031-038-0000	MUSIC BOOKS	421.34	
				42815 P	11-113-5110-031-038-0000	MUSIC	125.00	
				42815 P	11-113-5110-031-038-0000	MUSIC	209.00	954.14
A09505	10/10/25	13638	LINDA POLO		21-137-3110-000-000-0000	FLOWERS/LANDSCAPE CL	175.00	175.00
A09506	10/10/25	25392	REYES HOLDINGS LLC		21-297-5610-000-000-0000	DRINKS 10/2	1,858.18	
					21-297-5610-000-000-0000	DRINKS 10/9	1,618.96	3,477.14
A09507	10/10/25	13685	RHINO SPORTS CONST LLC		41-456-6220-021-000-0000	SCRN TURF FIELD	79,128.38	79,128.38
A09508	10/10/25	59924	SCHOOL SPECIALTY LLC		11-111-5110-000-006-0000	AA CHRIST SUPPLIES	287.61	287.61
A09509	10/10/25	59742	DUKE SERVICES LLC	43085 C	11-261-4122-000-000-0000	PLUM 9/29-10/2	1,680.00	1,680.00
A09510	10/10/25	61701	THE SIGN GUYS	42646 C	11-266-5990-001-000-2491	SAFETY SIGNS	6,405.00	
				42646 C	11-266-5990-004-000-2491	SAFETY SIGNS	3,360.00	
				42646 C	11-266-5990-005-000-2491	SAFETY SIGNS	3,360.00	
				42646 C	11-266-5990-021-000-2491	SAFETY SIGNS	2,340.00	
				42646 C	11-266-5990-121-000-2491	SAFETY SIGNS	4,400.00	
				42647 C	11-266-6410-000-000-2491	VAPE SIGNS	3,640.00	23,505.00
A09511	10/10/25	13827	TONIA RANGARAJAN		21-137-3110-000-000-0000	COOKING CAMP	5,238.00	5,238.00
A09512	10/10/25	76028	ARMOREX	43093 C	11-261-5992-000-000-0000	FOAM DISPENSER	201.83	
				43071 C	11-261-5992-000-000-0000	SCRUB PAD HOLDER	181.83	383.66
A09513	10/10/25	81465	VERIZON WIRELESS		11-261-3410-000-000-0000	BECC CELLPHONES 9/23	265.93	
					11-261-3410-000-000-0000	CUST CELLPHONES 9/23	90.06	
					11-261-3410-004-000-0000	SPEN CELLPHONES 9/23	48.59	
					11-261-3410-005-000-0000	HRNG CELLPHONES 9/23	48.59	
					11-261-3410-021-000-0000	SCRN CELLPHONES 9/23	48.59	
					11-261-3410-031-000-0000	BHS CELLPHONES 9/23	48.59	
					11-261-3410-121-000-0000	MALT CELLPHONES 9/23	48.59	
					11-261-3412-000-000-0000	TECH CELLPHONES 9/23	46.69	
					11-293-3410-000-000-0000	ATHL CELLPHONES 9/23	46.69	
					21-261-3410-002-000-0000	CE CELLPHONES 9/23	18.11	
					21-297-3410-000-000-0000	FE CELLPHONES 9/23	54.56	764.99
A09514	10/10/25	13028	JAMES WESLEY		21-137-3110-000-000-0000	PHOTO 101	84.00	84.00
A09515	10/10/25	89120	WOLVERINE FIRE	43070 C	11-261-4129-000-000-0000	FLOW SWITCH REP	665.50	665.50
Sub Total:							\$267,816.59	

Check Register

Run Date: 10/10/2025

CheckNo	CkDate	Vendor	Name	PO #	Account	Description	Amount	CheckAmt
						Register Total:	\$490,787.43	

CheckNo	CkDate	Vendor	Name	PO #	Account	Description	Amount	CheckAmt
---------	--------	--------	------	------	---------	-------------	--------	----------

Posting By Fund

Fund Name	Amount
CAPITAL PROJECT FUNDS	\$79,128.38
CAFETERIA FUND	\$46,115.01
GENERAL FUND	\$335,803.71
SPEC REV - STUDENT ACTIVITY	\$15,849.68
COMMUNITY EDUCATION	\$13,890.65
Total:	\$490,787.43

Posting To Detail Control Accounts

Account	Description	Fund	Account Class	Acct. Charge
12-101-1000-000-000-0000	GENERAL FUND CHECKING	G	O	(490,787.43)
12-131-0000-000-000-0000	INTERFUND REC AP	G	K	154,983.72
12-402-0000-000-000-0000	A/P CONTROL - GF	G	D	335,803.71
22-402-0000-000-297-0000	A/P CONTROL - FS	C	D	46,115.01
22-402-0000-000-299-0000	A/P CONTROL STUDENT ACT	K	D	15,849.68
22-402-0000-000-300-0000	A/P CONTROL - CE	M	D	13,890.65
22-411-0000-000-000-0000	STUD ACTIVIT I/F	K	N	(15,849.68)
22-411-0000-000-297-0000	FOOD SERVICE I/F	C	N	(46,115.01)
22-411-0000-000-300-0000	COMM ED I/F	M	N	(13,890.65)
42-402-0000-000-000-0000	AP BOND	A	D	79,128.38
42-411-0000-000-000-0000	CAP PROJ I/F	A	N	(79,128.38)

CheckNo	CkDate	Vendor	Name	PO #	Account	Description	Amount	CheckAmt
REGULAR CHECKS								
033193	10/17/25	06550	BEST PLUMBING SPECIALTIES INC	43120 C	11-261-5992-031-000-4470	SCALESTICK	389.00	389.00
033194	10/17/25	07308	BRIGHTON FORD	43116 C	21-296-7920-031-005-0000	AUTO PARTS	25.14	25.14
033195	10/17/25	13124	BULLSEYE PEST SOLUTIONS	43130 C	11-261-4125-000-000-0000	PEST CONTROL	650.00	650.00
033196	10/17/25	13944	CALVIN UNIVERSITY		11-111-5110-000-006-0000	CALVIN CHRISTIAN	620.00	620.00
033197	10/17/25	13805	COOPERSTOWN		21-321-7410-000-015-0000	BRIGHTON BULLDOGS RE	3,000.00	3,000.00
033198	10/17/25	11871	DTE ENERGY		11-261-5520-005-000-0000	HRNG ELECT 9/10-10/9	1,113.41	
					11-261-5520-031-000-0000	BHS ELECT 9/10-10/9	8,276.62	
					11-261-5520-121-000-0000	MALT ELECT 9/10-10/9	3,340.23	
					11-261-5521-000-000-0000	POLEBARN ELECT 9/3-1	35.86	12,766.12
033199	10/17/25	13308	ENERCO CORPORATION	43129 C	11-261-4126-000-000-0000	WATER TESTING	150.00	150.00
033200	10/17/25	13041	GLASCO CORP	43127 C	11-261-4110-000-000-0000	WINDOW REPAIRS	1,600.00	
				43128 C	11-261-4110-000-000-0000	WINDOW REPAIRS	1,087.00	2,687.00
033201	10/17/25	24751	GOLD STAR PRODUCTS		21-297-6410-000-000-0000	MALT CASHIER STAND	19,708.29	19,708.29
033202	10/17/25	25717	GUARDIAN ALARM	43123 C	11-261-4129-000-000-0000	MONITORING CONTR	2,393.40	2,393.40
033203	10/17/25	13760	LITERACY RESOURCES	42893 C	11-221-5990-000-000-2820	READ/WRITE BOOKS	524.16	524.16
033204	10/17/25	37663	LIVINGSTON CTY SHERIFF		11-266-3190-021-000-2491	SEPT SRO	7,750.00	7,750.00
033205	10/17/25	37707	LIVINGSTON POWER COMPANY	43114 C	11-266-5990-121-000-2491	STROBE INSTALL	9,225.00	9,225.00
033206	10/17/25	43627	MI HIGH SCHOOL ATHLETIC ASSN		21-296-5991-000-010-0000	2025 B TENNIS REG	350.00	350.00
033207	10/17/25	44666	MI SCHL BAND & ORCH ASSN	43115 C	11-112-5110-021-038-0000	SOLO REGISTERS	268.00	268.00
033208	10/17/25	13943	MILFORD GARDENS	43124 C	21-296-7920-031-043-0000	W PINE TREE	300.00	300.00
033209	10/17/25	47175	PAKS UNLIMITED		11-111-5110-000-006-0000	CALVIN CHRIST SUPPLI	211.44	211.44
033210	10/17/25	52450	PANERA BREAD CO		21-297-5610-000-000-0000	BAGELS SEPT	5,405.56	5,405.56
033211	10/17/25	13263	PREMIER SECURITY SOLUTIONS	43102 C	11-266-3190-001-000-2491	SEPT SECURITY	5,985.00	
				43102 C	11-266-3190-004-000-2491	SEPT SECURITY	5,600.00	
				43102 C	11-266-3190-005-000-2491	SEPT SECURITY	5,862.50	
				43102 C	11-266-3190-006-000-2491	SEPT SECURITY	5,882.80	
				43102 C	11-266-3190-041-000-2491	SEPT SECURITY	5,390.00	28,720.30
033212	10/17/25	66424	STENGER & STENGER PC		12-451-0500-000-000-0000	GARNISH W/H 10/17/25	221.86	221.86
033213	10/17/25	75390	THALNER ELECTRONIC	43126 C	11-293-4120-000-000-0000	MIXER/AMP REPAIR	1,950.00	1,950.00
033214	10/17/25	80337	UNIVERSITY OF MICHIGAN	43101 C	11-113-3710-031-000-0000	DEEP TUITION	3,200.00	3,200.00
033215	10/17/25	84519	WASTE MANAGEMENT	43119 C	11-261-4124-000-000-0000	BCPA DUMPSTER	866.28	866.28
033216	10/17/25	86100	WELTMAN, WEINBERG & REIS		12-451-0500-000-000-0000	GARNISH W/H 10/17/25	254.05	254.05
033217	10/17/25	13085	WEST SUBURBAN		21-321-7410-000-026-0000	FALL 2025 LEAGUE FEE	1,535.00	1,535.00
033218	10/17/25	MSC55	MI ALL-GIRL CHEER		20-191-1000-000-000-0000	MI ALL-GIRL CHEER	280.00	280.00
						Sub Total:	\$103,450.60	
ACH CHECKS								
A09516	10/17/25	05080	AUTO VALUE BRIGHTON		21-296-7920-031-005-0000	SHOP SUPPLIES SEPT	583.41	583.41
A09517	10/17/25	11428	CSM MECHANICAL LLC	43117 C	11-261-4123-000-000-0000	BOILER TESTING	9,877.50	9,877.50
A09518	10/17/25	11440	CURRICULUM ASSOCIATES LLC	42700 C	11-111-5210-001-000-0000	PHONICS BOOKS	1,584.00	1,584.00

Check Register
 Run Date: 10/17/2025

CheckNo	CkDate	Vendor	Name	PO #	Account	Description	Amount	CheckAmt
A09519	10/17/25	11808	D M BURR SECURITY		11-261-3150-000-000-0000	BANKCOURIER 10/10	102.80	102.80
A09520	10/17/25	13650	DIRECT ENERGY BUSINESS LLC		11-261-5520-000-000-0000	BECC ELECT 10/9	626.73	
					11-261-5520-001-000-0000	HAWK ELECT 10/9	2,276.32	
					11-261-5520-004-000-0000	SPEN ELECT 10/9	2,590.97	
					11-261-5520-006-000-0000	HILT ELECT 10/9	2,578.80	
					11-261-5520-021-000-0000	SCRN ELECT 10/9	5,274.13	
					11-261-5520-041-000-0000	BRIDGE ELECT 10/9	1,880.19	
					11-261-5521-000-000-0000	TRNS ELECT 10/9	382.60	
					21-261-5520-002-000-0000	MILLER ELECT 10/9	1,841.61	17,451.35
A09521	10/17/25	01273	IMPERIAL BAG & PAPER CO LLC		11-261-5990-000-000-0000	OPERATION SUP	629.40	
					11-261-5990-000-000-0000	OPERATION SUP	668.49	
					11-261-5990-000-000-0000	OPERATION SUP	81.00	
					11-261-5990-000-000-0000	OPERATION SUP	1,228.73	
					11-261-5990-000-000-0000	OPERATION SUP	6,310.25	
					11-261-5990-000-000-0000	OPERATION SUP	402.90	
					11-261-5990-000-000-0000	OPERATION SUP	291.82	
					11-261-5990-000-000-0000	OPERATION SUP	101.33	
					11-261-5990-000-000-0000	OPERATION SUP	6,074.11	
					11-261-5990-000-000-0000	OPERATION SUP	159.36	
					11-261-5990-000-000-0000	OPERATION SUP	23.94	
					11-261-5990-000-000-0000	OPERATION SUP	3,486.47	
					11-261-5990-000-000-0000	OPERATION SUP	309.24	
					11-261-5990-000-000-0000	OPERATION SUP	1,823.36	
					11-261-5990-000-000-0000	OPERATION SUP	10,508.38	
					11-261-5990-000-000-0000	OPERATION SUP	11,724.20	
					11-261-5990-000-000-0000	OPERATION SUP	482.82	
					11-261-5990-000-000-0000	OPERATION SUP	10,765.53	
					11-261-5990-000-000-0000	OPERATION SUP	55.30	
					11-261-5990-000-000-0000	OPERATION SUP	341.74	
					11-261-5990-000-000-0000	OPERATION SUP	1,393.02	56,861.39
A09522	10/17/25	61925	JOHNSON CONTROLS FIRE PROTE	43118 C	11-261-4129-000-000-0000	KITCHEN SERVICE	2,970.84	2,970.84
A09523	10/17/25	35929	KRUEGER INTERNATIONAL INC	42693 C	11-112-6420-121-000-0000	DESKS AND CHAIRS	30,388.84	30,388.84
A09524	10/17/25	26385	NO TEARS LEARNING	42934 C	11-111-5210-001-000-0000	PRINTING BOOKS 2025	782.10	
				42935 C	11-111-5210-005-000-0000	PRINTING BOOK 2025	91.25	
				42936 C	11-111-5210-006-000-0000	PRINTING BOOKS 2025	417.12	1,290.47
A09525	10/17/25	37640	LIVINGSTON COUNTY MECHANICA	43122 C	11-261-4123-000-000-0000	HVAC 10/6-10/10	2,220.00	2,220.00
A09526	10/17/25	43530	MI EDUCATORS FINANCIAL		12-451-0805-000-000-0000	NOV GTL LIFE INS	152.05	152.05
A09527	10/17/25	44230	MICHIGAN PLAYGROUNDS LLC	42941 C	11-261-5995-000-000-0000	BELT SEAT W/ CHAIN	418.50	418.50
A09528	10/17/25	44930	MICHIGAN VIRTUAL		11-111-3220-000-006-0000	SHAREDSERV CONF	139.00	139.00
A09529	10/17/25	59924	SCHOOL SPECIALTY LLC		11-111-5110-000-006-0000	HOLY SPIRIT SUPPLIES	166.59	166.59
A09530	10/17/25	59742	DUKE SERVICES LLC	43121 C	11-261-4122-000-000-0000	PLUM 10/7-10/10	1,920.00	1,920.00

Check Register
 Run Date: 10/17/2025

CheckNo	CkDate	Vendor	Name	PO #	Account	Description	Amount	CheckAmt
A09531	10/17/25	67195	STUDENT ADVENTURES INC		21-296-7920-021-480-0000	1ST TRANSFER	4,274.23	4,274.23
A09532	10/17/25	75928	TOWN CENTER INC		21-297-4120-000-000-0000	MALT REP FRIDGE	940.53	
					21-297-4120-000-000-0000	REP BHS COOLER	1,106.64	
					21-297-4120-000-000-0000	REP BHS COOLER	1,588.98	3,636.15
A09533	10/17/25	49235	TRANE US INC	43125 C	11-261-4123-000-000-0000	REP ACTUATOR	4,777.66	4,777.66
Sub Total:							\$138,814.78	
Register Total:							\$242,265.38	

CheckNo	CkDate	Vendor	Name	PO #	Account	Description	Amount	CheckAmt
---------	--------	--------	------	------	---------	-------------	--------	----------

Posting By Fund

Fund Name	Amount
CAFETERIA FUND	\$28,750.00
GENERAL FUND	\$201,325.99
SPEC REV - STUDENT ACTIVITY	\$5,532.78
COMMUNITY EDUCATION	\$6,656.61
Total:	\$242,265.38

Posting To Detail Control Accounts

Account	Description	Fund	Account Class	Acct. Charge
12-101-1000-000-000-0000	GENERAL FUND CHECKING	G	O	(242,265.38)
12-131-0000-000-000-0000	INTERFUND REC AP	G	K	40,939.39
12-402-0000-000-000-0000	A/P CONTROL - GF	G	D	201,325.99
22-402-0000-000-297-0000	A/P CONTROL - FS	C	D	28,750.00
22-402-0000-000-299-0000	A/P CONTROL STUDENT ACT	K	D	5,532.78
22-402-0000-000-300-0000	A/P CONTROL - CE	M	D	6,656.61
22-411-0000-000-000-0000	STUD ACTIVIT I/F	K	N	(5,532.78)
22-411-0000-000-297-0000	FOOD SERVICE I/F	C	N	(28,750.00)
22-411-0000-000-300-0000	COMM ED I/F	M	N	(6,656.61)

Check Register
 Run Date: 10/22/2025

CheckNo	CkDate	Vendor	Name	PO #	Account	Description	Amount	CheckAmt
REGULAR CHECKS								
033219	10/22/25	35920	CHARLES KROCHMAL		21-321-3110-000-004-0000	MEET REFEREE	250.00	250.00
033220	10/22/25	MSC55	ANDERSEN VENTURINI		21-321-3110-000-004-0000	ANDERSEN VENTURINI	90.00	90.00
033221	10/22/25	MSC55	CASEY KERN		21-321-3110-000-004-0000	CASEY KERN	90.00	90.00
033222	10/22/25	MSC55	DAMON ROBERTSON		21-321-5990-000-004-0000	DAMON ROBERTSON	600.00	600.00
033223	10/22/25	MSC55	GLYNIS WILKINS		21-321-3110-000-004-0000	GLYNIS WILKINS	90.00	90.00
033224	10/22/25	MSC55	JOHN MIHALIK		21-321-3110-000-004-0000	JOHN MIHALIK	90.00	90.00
033225	10/22/25	MSC55	KAT MARKOVICH		21-321-7410-000-007-0000	KAT MARKOVICH	125.00	125.00
033226	10/22/25	MSC55	RICH DESSIN		21-321-3110-000-004-0000	RICH DESSIN	135.00	135.00
Sub Total:							\$1,470.00	
Register Total:							\$1,470.00	

CheckNo	CkDate	Vendor	Name	PO #	Account	Description	Amount	CheckAmt
---------	--------	--------	------	------	---------	-------------	--------	----------

Posting By Fund

Fund Name	Amount
COMMUNITY EDUCATION	\$1,470.00
Total:	\$1,470.00

Posting To Detail Control Accounts

Account	Description	Fund	Account Class	Acct. Charge
12-101-1000-000-000-0000	GENERAL FUND CHECKING	G	O	(1,470.00)
12-131-0000-000-000-0000	INTERFUND REC AP	G	K	1,470.00
22-402-0000-000-300-0000	A/P CONTROL - CE	M	D	1,470.00
22-411-0000-000-300-0000	COMM ED I/F	M	N	(1,470.00)

Check Register

Brighton Public Schools

Run Date: 10/24/2025

CheckNo	CkDate	Vendor	Name	PO #	Account	Description	Amount	CheckAmt
REGULAR CHECKS								
033227	10/24/25	06550	BEST PLUMBING SPECIALTIES INC	43147 C	11-261-5994-000-000-0000	STRAINER VALVE	613.57	
				43148 C	11-261-5994-000-000-0000	SCALESTICK	97.25	710.82
033228	10/24/25	13498	BLOOMFIELD HILLS SCHOOLS	43137 C	21-296-7920-031-350-0000	SEMMUNA REGISTER	580.00	580.00
033229	10/24/25	07308	BRIGHTON FORD	43142 C	11-127-5110-031-550-3440	SHOP BOLTS	13.83	13.83
033230	10/24/25	08276	C C CATERING INC	43145 C	21-296-7920-031-200-0000	PLAY CATERING	600.00	600.00
033231	10/24/25	09076	CHAMPION CHEERLEADING	43155 C	21-296-5991-000-011-0000	FALL CLINIC	1,495.00	1,495.00
033232	10/24/25	09099	JAMES CHAPMAN		21-321-3110-000-004-0000	HALLOWEEN MEET REFER	135.00	135.00
033233	10/24/25	13931	COMMERCIAL LIGHTING CO	43163 C	11-261-5993-000-000-0000	SUPPLIES	141.94	141.94
033234	10/24/25	11871	DTE ENERGY		11-261-5520-004-000-0000	SPEN ELECT 9/18-10/1	2,785.95	
					11-261-5520-006-000-0000	HILT ELECT 9/17-10/1	2,706.05	5,492.00
033235	10/24/25	18550	ESTR PUBLICATIONS	43112 P	11-122-5110-031-194-0000	TSR FORMS	91.40	91.40
033236	10/24/25	13030	FRANKENMUTH HIGH SCHOOL		11-113-7410-031-000-3390	FEB INVITE REGISTER	255.00	255.00
033237	10/24/25	13040	DEBORAH GAUTHIER		21-296-7920-121-300-0000	2025 CAMP NURSE	750.00	750.00
033238	10/24/25	22845	GENESEE INTERMEDIATE		11-226-3190-000-006-0000	GENESEE ACAD BALANCE	2.10	2.10
033239	10/24/25	13031	HASLETT HIGH SCHOOL		11-113-7410-031-000-3390	JAN TOURNEY REGISTER	150.00	150.00
033240	10/24/25	35832	KONE INC		11-261-4129-000-000-0000	MONTHLY MAINT	71.69	71.69
033241	10/24/25	37707	LIVINGSTON POWER COMPANY		21-297-6410-000-000-0000	BHS CIRCUIT BREAKER	8,985.00	8,985.00
033242	10/24/25	13024	BRYAN MASI	43154 C	11-293-7410-000-000-0000	KLAA COMMISSIONER	150.00	150.00
033243	10/24/25	13729	KELLI MCMULLEN	43158 C	21-296-5991-000-026-0000	GROUP SESSION	1,340.00	1,340.00
033244	10/24/25	41272	MARY KATE MELVILLE	43134 C	21-296-7920-031-750-0000	PAW HOODIES	1,802.20	
				43135 C	21-296-7920-031-750-0000	PAW JACKETS	1,314.70	3,116.90
033245	10/24/25	41356	CRYSTAL MERRILL		21-296-7920-121-300-0000	2025 CAMP NURSE	750.00	750.00
033246	10/24/25	13510	MI COACHES CORNER, LLC	43157 C	11-293-7410-000-011-0000	INVITE REGISTER	1,450.00	1,450.00
033247	10/24/25	13219	MICH PAINTING & DECORATING		21-297-6410-000-000-0000	SCRANTON PAINTING	3,957.00	3,957.00
033248	10/24/25	46200	MITCHELL REPAIR INFORMATION C	43139 C	11-127-4120-031-550-3440	TEAMWORKS PLUS	112.42	112.42
033249	10/24/25	51363	NORTHVILLE PUBLIC	43162 C	21-296-5991-000-001-0000	12/17/25 HOLIDAY LUN	50.00	50.00
033250	10/24/25	41115	PERFORMANCE HEALTH HOLDING	43161 C	11-293-5992-000-100-0000	TRAINING MATERIALS	1,871.81	
				43160 C	11-293-5992-000-100-0000	TRAINING SUPPLIES	39.12	
				43159 C	11-293-5992-000-100-0000	TRAINING MATERIALS	111.94	2,022.87
033251	10/24/25	54590	POLAR PARADICE	43133 C	21-296-7920-031-750-0000	SLUSHIE MIX	1,125.00	1,125.00
033252	10/24/25	55308	QUICK SILVER MARKETING		21-321-5990-000-012-0000	JERSEYS	60.00	
					21-321-5990-000-012-0000	SBALL COACH APPAREL	2,382.00	2,442.00
033253	10/24/25	60115	STEVEN H SCHULTE	43144 C	21-296-7920-031-000-0000	PIANO REPAIRS	350.00	
				43144 C	21-296-7920-031-015-0000	PIANO REPAIRS	175.00	525.00
033254	10/24/25	63490	SOLARWINDS, INC.	42778 C	11-284-3450-000-000-0000	WEB HELP DESK	9,188.00	9,188.00
033255	10/24/25	13750	THIRD COAST TECH		11-111-5110-000-006-0000	BRO RICE SUPPLIES	6,560.42	
					11-111-5110-000-006-0000	BRO RICE SUPPLIES	6,560.42	13,120.84
033256	10/24/25	13950	TROY ATHENS SCI OLY		11-113-7410-031-000-3390	2025 INVITE REGISTER	285.00	285.00
033257	10/24/25	MSC15	STEPHEN EARL		20-181-5100-000-000-0000	STEPHEN EARL	556.80	556.80
033258	10/24/25	MSC55	AARON DORGAN		21-321-5990-000-013-0000	AARON DORGAN	375.24	375.24

Check Register

Brighton Public Schools

Run Date: 10/24/2025

CheckNo	CkDate	Vendor	Name	PO #	Account	Description	Amount	CheckAmt
033259	10/24/25	MSC55	HAILEY FRANKOVICH		21-351-4910-000-000-0000	HAILEY FRANKOVICH	550.00	550.00
033260	10/24/25	MSC55	JERRY KELLEY		21-321-3110-000-004-0000	JERRY KELLEY	90.00	90.00
033261	10/24/25	MSC55	KATHRYN WOODLEY		21-321-7410-000-014-0000	KATHRYN WOODLEY	42.00	42.00
033262	10/24/25	MSC55	NIMRIE RAMSDELL		11-232-3190-000-000-0000	NIMRIE RAMSDELL	100.00	100.00
033263	10/24/25	MSC55	PAT MCGOUN		21-321-7410-000-015-0000	PAT MCGOUN	643.75	643.75
033264	10/24/25	MSC55	SARAH HIXSON		21-321-3110-000-004-0000	SARAH HIXSON	90.00	90.00
033265	10/24/25	MSC55	TAVIS MILLEROV		21-321-3110-000-004-0000	TAVIS MILLEROV	90.00	90.00
033266	10/24/25	MSC70	NOREEN EISS		20-181-4250-000-000-0000	NOREEN EISS	20.00	20.00
Sub Total:							\$61,666.60	
ACH CHECKS								
A09534	10/24/25	05089	AVENTRIC TECHNOLOGIES LLC		11-213-5910-000-000-0000	AED REPLACEMENT PADS	152.00	152.00
A09535	10/24/25	05235	BSN SPORTS INC	43156 C	21-296-5991-000-014-0000	VB BACKPACKS	3,990.86	3,990.86
A09536	10/24/25	08341	C & M ASSOCIATES LLC	43153 C	11-293-4120-000-000-0000	OD POSTS & HANDLES	5,610.00	5,610.00
A09537	10/24/25	11808	D M BURR SECURITY		11-261-3150-000-000-0000	BANKCOURIER 10/17	102.80	102.80
A09538	10/24/25	18952	EXECUTIVE ENERGY		11-261-4128-000-000-0000	ENERGY MNGT SEPT	500.00	500.00
A09539	10/24/25	22710	GATEWAY EDUCATION HOLDINGS L	43099 C	11-112-5210-121-000-0000	MVLIT25	3,233.52	
				42687	11-221-5990-000-000-2820	READ ALOUD LIB	1,431.95	4,665.47
A09540	10/24/25	01273	IMPERIAL BAG & PAPER CO LLC		11-261-5990-000-000-0000	OPERATION SUP	3,303.47	
					11-261-5990-000-000-0000	OPERATION SUP	15.77	3,319.24
A09541	10/24/25	13137	LINDE GAS & EQUIPMENT	43167 C	11-127-4120-031-550-3440	SHOP GAS	170.95	170.95
A09542	10/24/25	37640	LIVINGSTON COUNTY MECHANICA	43150 C	11-261-4123-000-000-0000	HVAC 10/13-10/17	1,740.00	1,740.00
A09543	10/24/25	38604	MANER COSTERISAN PC	43152 C	11-231-3180-000-000-0000	FY 25 AUDIT	2,500.00	2,500.00
A09544	10/24/25	44930	MICHIGAN VIRTUAL	43146 C	11-112-3710-000-035-0000	ONLINE TUIT	315.00	
				43146 C	11-113-3710-000-006-0000	ONLINE TUIT	92,180.00	
				43146 C	11-113-3710-031-000-0000	ONLINE TUIT	112,750.00	
				43146 C	11-132-3710-041-000-0000	ONLINE TUIT	38,845.00	244,090.00
A09545	10/24/25	48318	NATL INSURANCE SERVICES		12-451-0610-000-000-0000	LIFE INS/NOV	463.50	463.50
A09546	10/24/25	51360	NORTHLAND SERVICES LLC		21-321-7410-000-015-0000	BBALL FIELD PREP	380.00	
					21-321-7410-000-026-0000	SOCCER LINING	4,450.00	4,830.00
A09547	10/24/25	25392	REYES HOLDINGS LLC		21-297-5610-000-000-0000	DRINKS 10/16	1,170.91	1,170.91
A09548	10/24/25	59742	DUKE SERVICES LLC	43151 C	11-261-4122-000-000-0000	PLUM 10/13-10/17	2,400.00	2,400.00
A09549	10/24/25	61495	SHAR PRODUCTS COMPANY	43164 C	11-113-4120-031-021-0000	INSTR REPAIRS	235.00	235.00
A09550	10/24/25	13054	STAFFORD SMITH	43141 C	21-296-7920-031-750-0000	SLUSHY MACHINE REP	2,959.78	2,959.78
A09551	10/24/25	82065	W4 SIGNS INC		11-261-5992-000-000-0000	AED SIGNS	300.00	300.00
Sub Total:							\$279,200.51	
Register Total:							\$340,867.11	

CheckNo	CkDate	Vendor	Name	PO #	Account	Description	Amount	CheckAmt
---------	--------	--------	------	------	---------	-------------	--------	----------

Posting By Fund

Fund Name	Amount
CAFETERIA FUND	\$14,112.91
GENERAL FUND	\$299,606.87
SPEC REV - STUDENT ACTIVITY	\$17,282.54
COMMUNITY EDUCATION	\$9,864.79
Total:	\$340,867.11

Posting To Detail Control Accounts

Account	Description	Fund	Account Class	Acct. Charge
12-101-1000-000-000-0000	GENERAL FUND CHECKING	G	O	(340,867.11)
12-131-0000-000-000-0000	INTERFUND REC AP	G	K	41,260.24
12-402-0000-000-000-0000	A/P CONTROL - GF	G	D	299,606.87
22-402-0000-000-297-0000	A/P CONTROL - FS	C	D	14,112.91
22-402-0000-000-299-0000	A/P CONTROL STUDENT ACT	K	D	17,282.54
22-402-0000-000-300-0000	A/P CONTROL - CE	M	D	9,864.79
22-411-0000-000-000-0000	STUD ACTIVIT I/F	K	N	(17,282.54)
22-411-0000-000-297-0000	FOOD SERVICE I/F	C	N	(14,112.91)
22-411-0000-000-300-0000	COMM ED I/F	M	N	(9,864.79)