

PALLISER

ENCORE

TABLE OF CONTENTS

ABOUT US

- 02 EXPERIENCE ENCORE
- 05 BEST SEATS IN THE HOUSE
- 06 SUSTAINABLE SUCCESS
- 07 UL COMPLIANCE

PRODUCTS

LUXURY RECLINERS

- 10 C-SERIES
- 18 P-SERIES
- 22 Z-SERIES
- 26 S-SERIES
- 30 U-SERIES

34 LUXURY PODS

38 ROCKERS

FRONT ROW OPTIONS

- 42 CHAISE SERIES
- 46 SNUGGLE LOUNGER

FEATURES

- 50 WARRANTY
- 52 COVERS
- 54 ENCORE CARE
- 58 CUSTOM FEATURES
- 59 CUSTOM INTEGRATION
- 60 OPTIONS & ACCESSORIES
- 64 TABLE STYLES

ACKNOWLEDGEMENTS

- 72 ENCORE CINEMA CUSTOMERS



Classic Cinemas Paramount
Kankakee, Illinois



**ENTERTAINMENT TRANSPORTS
THE IMAGINATION. LUXURY
TRANSFORMS THE EXPERIENCE.**

Established in 2015 as a sub-brand of Palliser Furniture, Encore is a leader in high-quality, premium theatre seating. Manufactured in North America and installed in over 25 countries, the comfort, durability, and innovation of our products is unmatched. Offering a wide range of styles, options, and custom solutions to meet the needs of our customers, we provide peace of mind through our comprehensive service and warranty.



Classic Cinemas Paramount
Kankakee, Illinois



BEST SEATS IN THE HOUSE

Encore Performance Seating catapults passive entertainment into an unsurpassed luxury experience. While your guests sit back and enjoy the show, you'll relish the benefits of quality craftsmanship, customized options, innovative technology, and exceptional service. Treat your guests with the epitome of comfort. Your return on investment? They'll keep coming back.



SUSTAINABLE SUCCESS

- Domestic manufacturing reduces environmental impact and carbon footprint.
- Raw materials sourced from Canada and within North America as much as possible.
- Ethically sourced, sustainable leather.
- Water-based adhesives.
- Recycle waste materials where possible (foam, cardboard, wood, etc.).
- Sustainable CertiPUR-US® foams.

UL COMPLIANCE

A COMMITMENT TO SAFETY AND QUALITY




UL (Underwriters Laboratories) compliance means that a product has been thoroughly tested and certified to meet rigorous safety, quality, and security standards. This certification gives consumers confidence that products are safe to use and perform as promised.

For us at Encore, UL compliance offers reassurance that we are providing safe, reliable products to you, our customer.

How Does UL Ensure Compliance?

- **Rigorous Testing:**
UL tests representative samples of products to ensure they meet required standards.
- **Continuous Evaluation:**
UL also tests new products and evaluates any changes to existing products or production processes.
- **Ongoing Oversight:**
UL conducts regular inspections of manufacturing facilities to ensure consistent product quality.





“Best seats in the house and unmatched service.”

Omar Khan
Star Cinema Grill CITYCENTRE
Houston, Texas

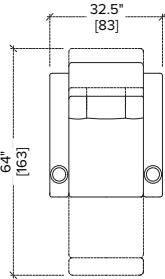


C-SERIES

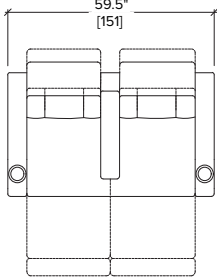
C1

Our flagship recliner, this style is a classic for a reason. Designed with vertical seat back cushions for supportive comfort, and available in narrow and wide seat widths, this style is ideal for all customers.

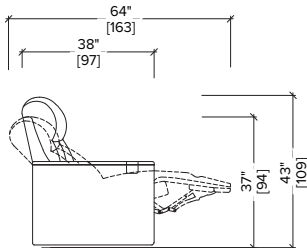
Sharing all standard features and benefits with the other C-Series styles, C1 is also equipped with optional heated lumbar for added indulgence.



CONTINUOUS
ROW SEATING



LOVE SEAT
CONFIGURATION



RECLINE OPTIONS:
64"-60"-55"/162-152-140
SEAT HEIGHT: 19"/48
ARM WIDTH: 5"/12

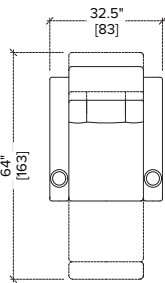


C7

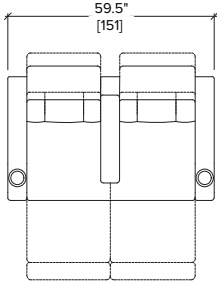
Designed with three horizontal seat back cushions for supportive comfort, and available in narrow and wide seat widths, this style is popular with our European clients. Sharing all standard features and benefits with the other C-Series styles excluding lumbar heat and massage.



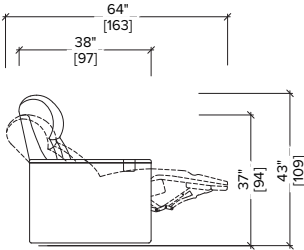
Pathé Beaugrenelle
Paris, France



CONTINUOUS
ROW SEATING



LOVE SEAT
CONFIGURATION



RECLINE OPTIONS:
64"-60"-55"/162-152-140
SEAT HEIGHT: 19"/48
ARM WIDTH: 5"/12



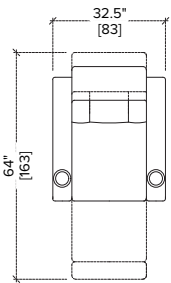
C8

Add an extra touch of luxury to your theatre with the C8 series. Your customers can recline to their desired position while adjusting the power headrest for the perfect sightline.

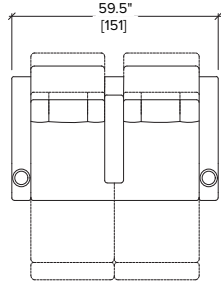
Designed with vertical seat back cushions, scratch resistant wooden arm caps, and available in narrow and wide widths, the C8 is the most powerful recliner of the C-Series family for ultimate comfort and flexibility.



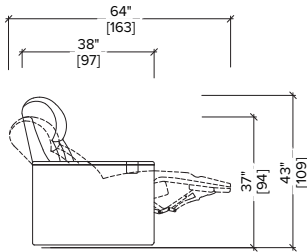
Maya Cinemas North Las Vegas
North Las Vegas, Nevada



CONTINUOUS
ROW SEATING



LOVE SEAT
CONFIGURATION



RECLINE OPTIONS:
64"-60"-55"/162-152-140
SEAT HEIGHT: 19"/48
ARM WIDTH: 5"/12



P-SERIES

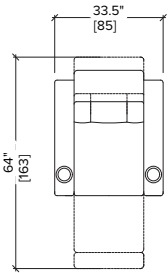


P1

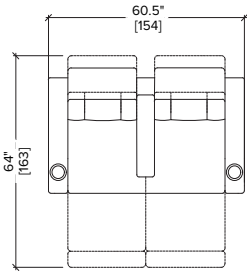
Elevate your theatre with the standout design elements of the P1 seat. Contrast piping and a luxurious diamond quilted panel offer striking visuals while the bucket seat provides comfort. Your guests can customize the power headrest to find the ideal sightline, and indulge in optional heated lumbar support. Finished with scratch-resistant wooden arm caps.



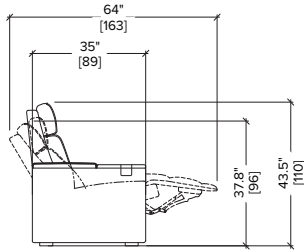
Blue Cinemas
Metropol, Switzerland



CONTINUOUS
ROW SEATING



LOVE SEAT
CONFIGURATION



RECLINE OPTIONS:
64"-60"-55"/162-152-140
SEAT HEIGHT: 19.5"/49
ARM WIDTH: 6"/15





Z-SERIES

Z1

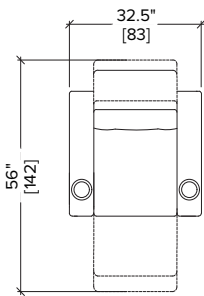
With its zero-gravity mechanism, Z1 provides an optimized recline position on a smaller footprint, allowing for a better dine-in experience without compromising comfort. Finished with scratch-resistant wooden arm caps and an optional heating pad, your guests may never want to leave. Custom quilting is available.



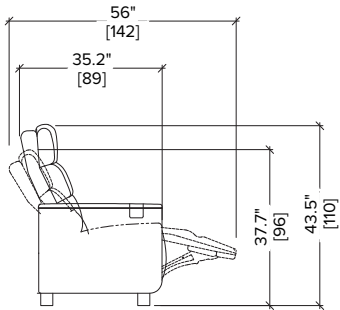
Cineplex SilverCity St. Vital
Winnipeg, Manitoba



Star Cinema Grill City Center
Houston, Texas



CONTINUOUS
ROW SEATING



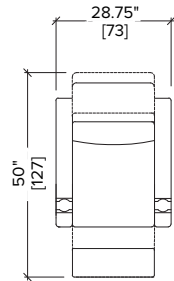
RECLINE OPTIONS:
53"-56"/135-142
SEAT HEIGHT: 19.9"/51
ARM WIDTH: 6"/15

S-SERIES

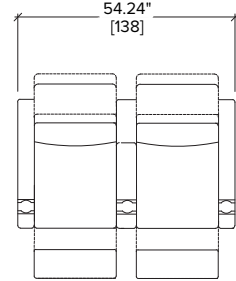


S1

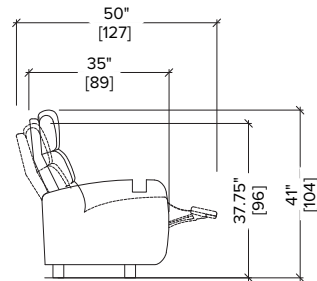
Designed to cater to narrow platforms by optimizing seating capacity and comfort, S1 is truly a “space-saver”. With a 50” recline depth and an innovative narrow cupholder design that fits slimmer arm rests, you can maximize space without sacrificing comfort. The S-Series allows you to expand the number of seats in each row, and gives you the opportunity to add additional rows.



CONTINUOUS
ROW SEATING



LOVE SEAT
CONFIGURATION



SEAT HEIGHT: 19.75"/50
ARM WIDTH: 4.12"/10
RECLINE OPTION



Film Alley Weatherford
Weatherford, Texas

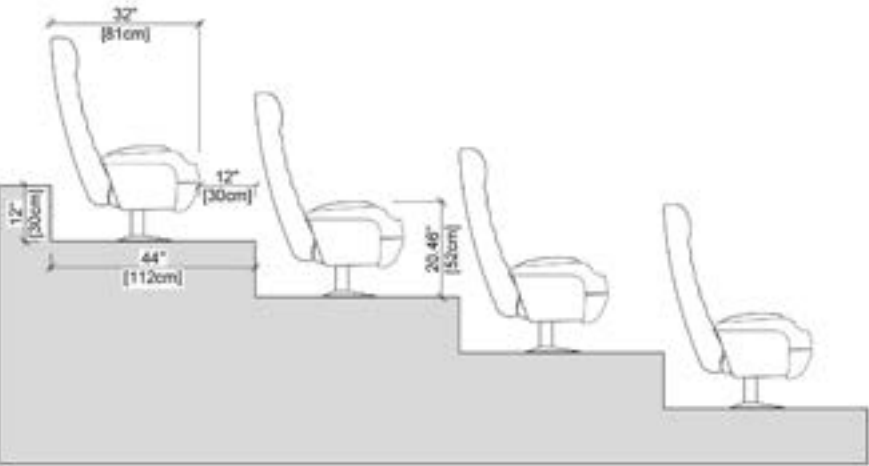


U1

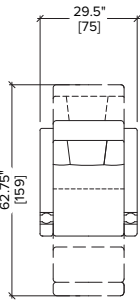
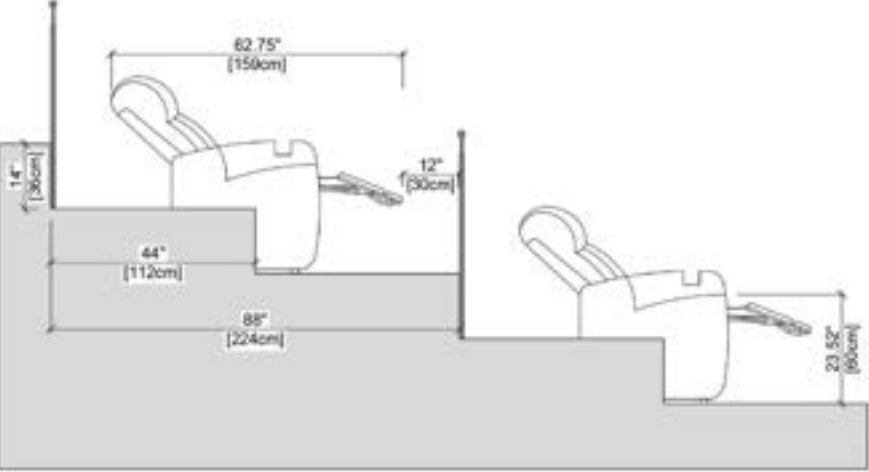
U1 has been designed to adapt to standard seating platforms so that no major renovations are needed to your theatre. It's adjustable to different riser heights so your customers experience the same level of comfort in any platform configuration.



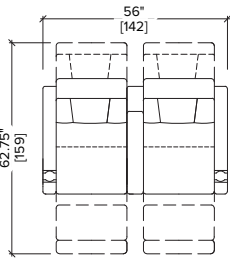
GENERIC THEATRE SEATING



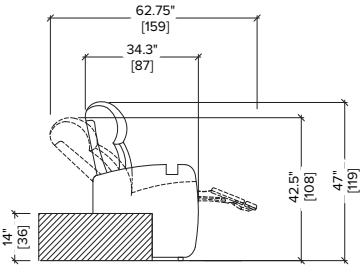
U-SERIES | 62.75" RISER RECLINER



CONTINUOUS
ROW SEATING



LOVE SEAT
CONFIGURATION



SEAT HEIGHT: 22.25"/565
ARM WIDTH: 4"/10 OR 5.5"/14
RISER HEIGHT: 6"/15-14"/35
RECOMMENDED PLATFORM: 44"/111
RECLINE OPTION

LUXURY PODS

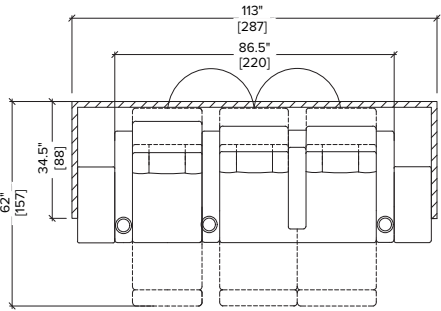
PRIVACY PANELS

Luxurious upholstery panels provide an intimate movie-going experience for your customers. Built with a high strength steel or wood frame, depending on the style, privacy panels can be retrofitted into all recliner series.

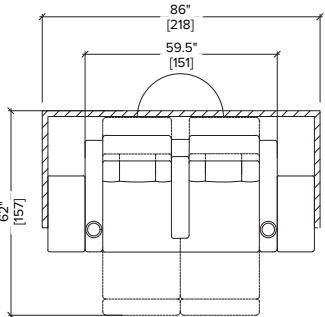
Custom panel sizes and shapes are available, and Encore will work with your design teams to create the perfect privacy configuration to meet your needs. Available in all colours of Sutton.



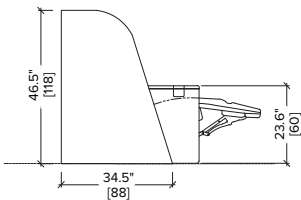
* Different recline options are available



3-SEAT CONFIGURATION
WITH T1 CONSOLES



LOVESEAT CONFIGURATION
WITH T1 CONSOLES



CONSOLE SPREAD

Available in sophisticated finishes, with a variety of accessory options, our consoles provide your guests extra space for their snacks and belongings.



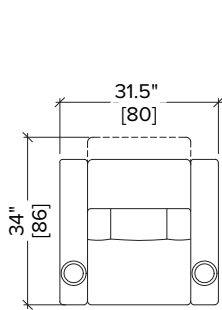


ROCKERS

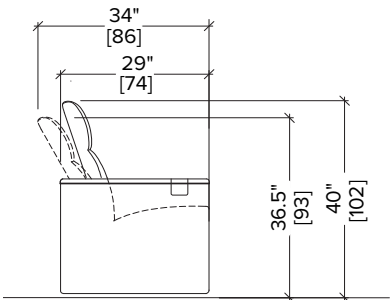
Maya Cinemas Delano
Delano, California

R 1

A non-reclining option for smaller footprint theatres, R1 is a classic option for a quick refresh. Seat width is 31.5” to accommodate more seats in a row.



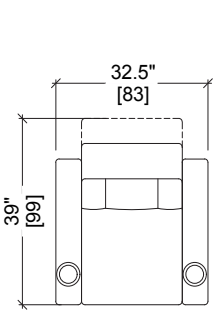
CONTINUOUS
ROW SEATING



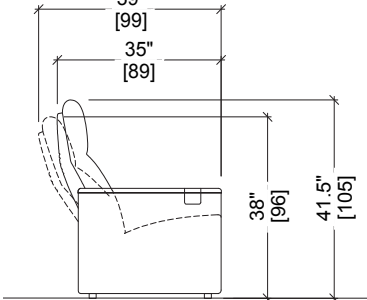
SEAT HEIGHT: 18.5"/47
ARM WIDTH: 5.5"/14
RECLINE OPTION

R 2

The older sibling of the R1, R2 is larger at 39” providing a bigger footprint for a slightly more luxurious seating experience.



CONTINUOUS
ROW SEATING



SEAT HEIGHT: 17.5"/44
ARM WIDTH: 5.5"/14
RECLINE OPTION



CHAISE SERIES

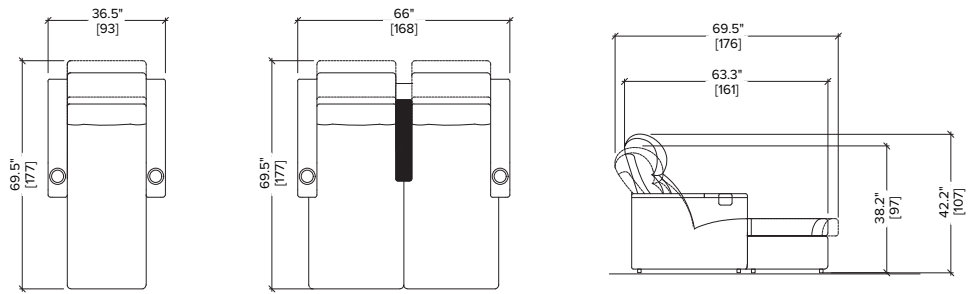
C8 CHAISE

Add an extra touch of luxury to your theatre with the C8 Chaise. Your customers can stretch out for ultimate relaxation and comfort while adjusting the power headrest for the perfect sightline.

Designed with vertical seat back cushions, scratch resistant wooden arm caps, the C8 Chaise shares most standard features of the other C-Series styles. Custom styles and configurations are available.



Reel Luxury Cinemas
The Woodlands, Texas



CONTINUOUS
ROW SEATING

LOVE SEAT
CONFIGURATION

ARM WIDTHS: 6"/15
SEAT HEIGHT: 16.5"/ 42
CHAISE SEAT WIDTH: 28.25"/72
RECLINE OPTION

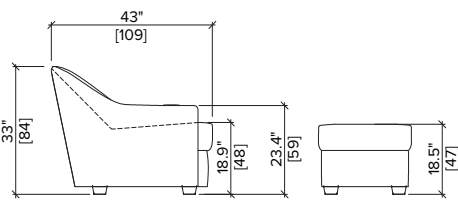
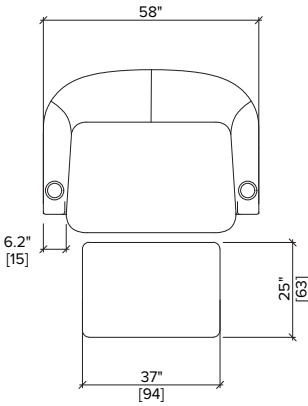




SNUGGLE LOUNGER

Designed specifically to make the front row the best seat in the house, the Snuggle Lounger offers a unique, intimate movie-going experience for couples.


Designed with a durable polyurethane cover that looks and feels like leather but performs with an antimicrobial finish for easy cleaning, the high resiliency foam seat offers comfort and support.



CONTINUOUS
ROW SEATING



Imagine Geneva Lakes
Lake Geneva, Wisconsin

The image shows a wide-angle view of a modern theater's seating area. Rows of plush, black leather seats with integrated armrests and cup holders are arranged in a tiered fashion. Small, glowing blue lights are visible on the sides of the seats, adding to the ambient lighting. The walls are dark and feature several small, square speakers. The floor is a polished, light-colored material that reflects the ambient light. The overall atmosphere is sophisticated and high-tech.

“Encore has been great to work with by giving us multiple options and helping us with the layouts of our models.”

Andy Rhodes
Vice President, Facilities
Larry H. Miller Sports + Entertainment



WARRANTY

WE UNDERSTAND THAT ULTIMATE
COMFORT CAN ONLY STAND THE TEST
OF TIME WITH MAXIMUM RESILIENCE.

Our products are only made with premium-sourced materials:

- Heavy duty polyurethane cover material with antimicrobial finish for easy cleaning and durability while providing the look and feel of leather.
- High-resiliency seat foam offers superior durability and comfort.
- Ergonomic LED toggle switch controls convenient, whisper-quiet motor motion recline.
- Engineered wood frames and steel chassis mechanism offers exceptional durability and stability.
- Quick and easy 2 piece installation.
- Save time on cleaning, maintenance, and servicing with flip seats providing easy access to the motor.
- Comprehensive warranty and service.

COVERS




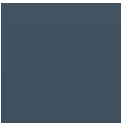




















SUTTON

Our most popular choice, the Sutton performance cover collection is made of a coated upholstery fabric, made from a polycarbonate resin blend, and is designed with equal importance placed on beauty and durability.

This collection features i-Clean® technology that repels stains and liquids, along with Silver Ion Technology that continuously inhibits the growth of bacteria and other dangerous microbes. Embedded directly into the fabric, it also suppresses the growth of harmful and odor causing substances such as mold, mildew and fungus.

Sutton is available in 22 unique colourways.

					
Thunder	Grape	Ocean	Williamsburg	Sage	Apple Green
					
Lucid	Steel	Storm	Graphite	Stratus	Black
					
Bordeaux	Lipstick	Cordovan	Chili	Java	Balsa
					
Luggage	Fiesta	Buff	Straw		

Lead times may vary depending on colour and finish selected.
For more information, please contact your Encore Sales Representative.



VALENCIA™ – A
VALENCIA™ is Spradling®’s most recognized faux leather collection. Its high performance easy-clean properties, and inherent protection against viruses, bacteria, unsightly stains and abrasion is enhanced by the coated PERMABLOK3® finish. This makes VALENCIA™ the preferred selection when looking for a coated fabric for upholstered surfaces in high-traffic areas and is frequently used throughout airports, restaurants, theatres, and public spaces.

Available in 66 colourways.

VALENCIA™ C5
This collection maintains VALENCIA™’s technical properties, including Crib 5 FR resistance, while offering a classic charm to your furniture.

Contact your Encore Sales Representative
for more details on VALENCIA™.

ENCORE | CARE



AUDIT SERVICES

An Encore Certified technician will visit the site to conduct a complete audit of the recliners. We then provide a detailed report of our findings along with a comprehensive quote for any recommended replacements.



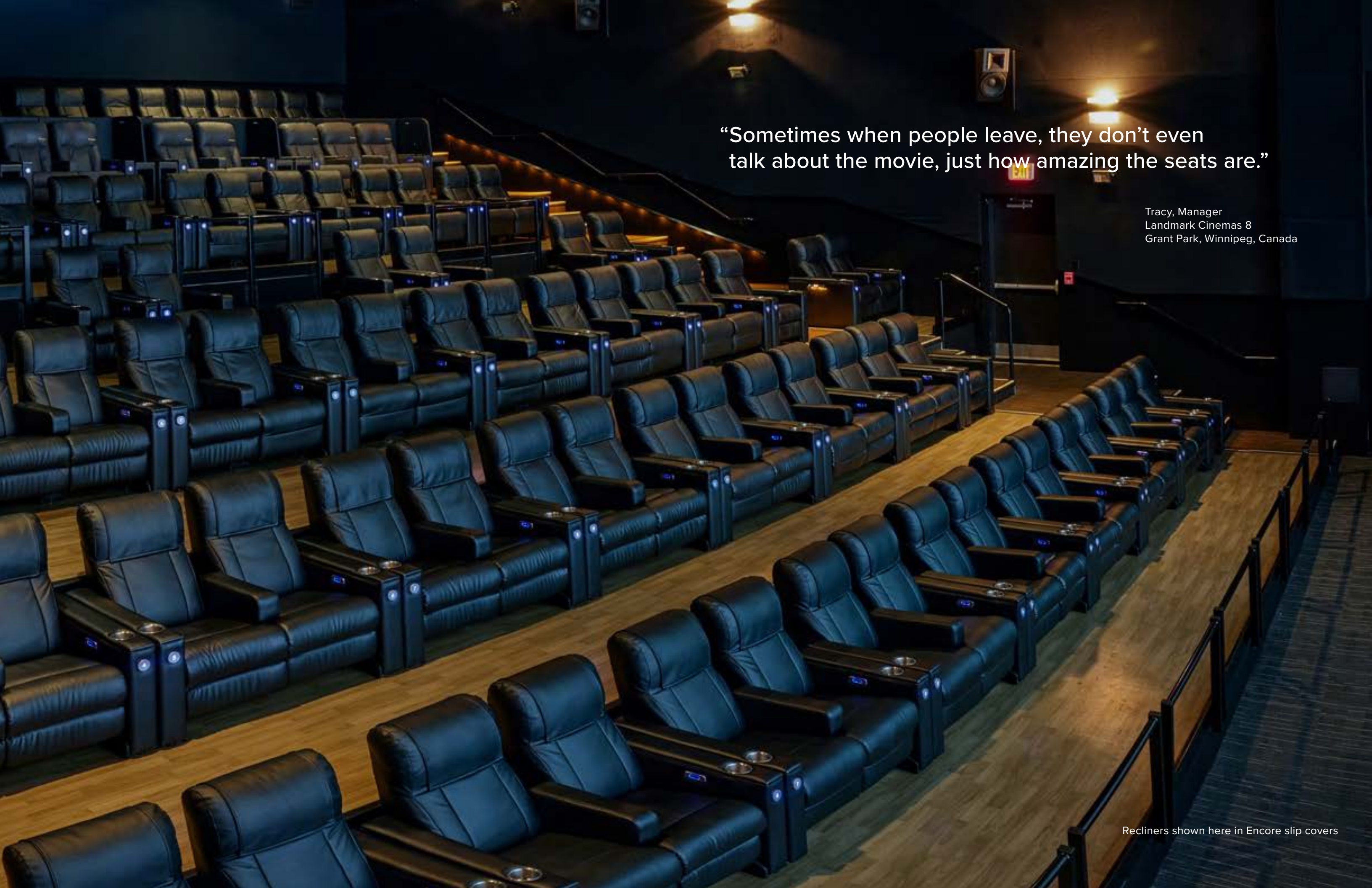
REPLACEMENT PARTS

The quote and report will include a detailed breakdown of the audit, allowing the customer to decide which items to order after review.



SLIP COVERS

Encore offers original-fit slipcovers for every upholstered component, perfectly matching your seats to help extend their lifespan. We also provide custom slipcovers tailored to match your current theatre seating, offering an affordable way to keep your luxury chairs looking pristine.



“Sometimes when people leave, they don’t even talk about the movie, just how amazing the seats are.”

Tracy, Manager
Landmark Cinemas 8
Grant Park, Winnipeg, Canada

Recliners shown here in Encore slip covers

CUSTOM FEATURES

Regardless of the size, shape, and slope of your theatre’s footprint, we’re here to bring your vision to reality. We offer flexible, personalized design services for unique seating requirements, endless customization options, and premium upgrades.



LED
Seat/Row Numbers



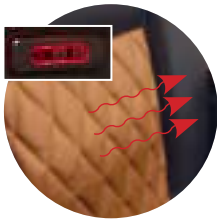
Aisle Path Light



Embroidery



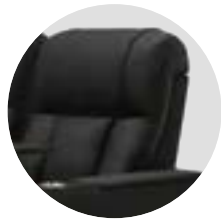
Wireless
Open/Close System



Lumbar
Heat



Massage



Zip-in Headrest
Cover



ADA Accessible
Seating



Variety of
Table Sizes



Contrast
Piping

CUSTOM INTEGRATIONS

Our movie theater seating is fully compatible with motion seating and call button systems, enhancing your viewing experience with immersive movement and seamless service at the touch of a button.

D BOX



D-Box is a motion seating system that syncs with on-screen action, providing an immersive experience by making seats move, vibrate, and tilt, enhancing the visual experience with physical sensations.

MAGNIFY 8



Magnify 8 features a precise distribution of multiple vibrations within the cinema seat combined to create a seamless one-of-a-kind experience. A diverse array of dynamic and directional effects moves through 8 spots perfectly synchronized with the on-screen action. Audiences can immerse themselves in a spectrum of sensations, from gentle vibrations to intense tremors.

VENUE VALET



The Venue Valet integrated call button system acts as an extension of your food service team. It instantly notifies them when a customer presses the button, and can assist in other ways throughout the film, like reminding the team to drop off the customer’s check.



OPTIONS & ACCESSORIES

REMOVABLE HEADREST COVER

Our removable headrest cover was designed to protect your investment. Instead of replacing the back of a seat, you can easily replace the removable panel at a fraction of the cost. The removable headrest cover is available for logo embroidery, advertising embroidery and/or seat number and row letter embroidery—the sky is the limit!



LED OPTIONS

Our stylish LED seat numbers, row letters and aisle path lights help illuminate your theatre, providing a luxurious ambience for your customers. The added convenience of seat numbers and row letters allows your customers to pre-select their seats and find them easily in the theatre.





TABLE
STYLES

CHOOSE YOUR STYLE

KEY FEATURES

LARGE DIAMETER
We stand apart from our competitors by considering the wear our tables need to endure every day. We’ve incorporated a reinforced support cylinder with a large diameter to reduce the chances of the tables being affected by knocks, bumps and impact.

STAINLESS STEEL
The contrast of the silver against the dark laminate is sharp and contemporary, but that’s not why we chose this material. Stainless steel is famously durable, resistant to stains, rust, corrosion, and unlike plastic, very easy to clean.

3D LAMINATES
When compared to other laminates and coated materials on the market, 3D laminates offer longer lasting, better performing components that are simple to clean and conceal signs of wear with specialty topcoats and enhanced textures.

SNACK SIZE TABLE



* Only Available in Black

DINE-IN TABLE



COMBO TABLE




LUXURY DINE-IN

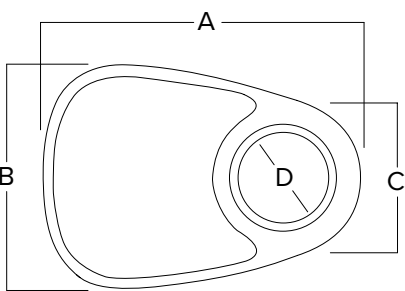


* Double Pivot

TABLE DIMENSIONS

SNACK SIZE TABLE






A – 12.2"/31
B – 8.5"/22
C – 5.5"/13
D – 3.6"/9.2

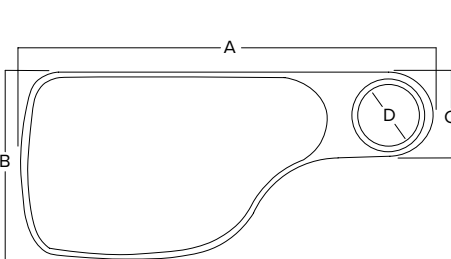
Height – 0.94"/2.4

Distance from top of arm to bottom of table:
3.5 in / 8.9 cm

* Only Available in Black

DINE-IN TABLE






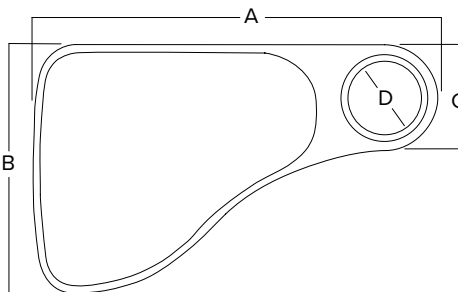
A – 23.7"/60
B – 11"/28
C – 5"/13
D – 3.6"/9

Height – 0.75"/2

Distance from top of arm to bottom of table:
3.5 in / 8.9 cm

COMBO TABLE






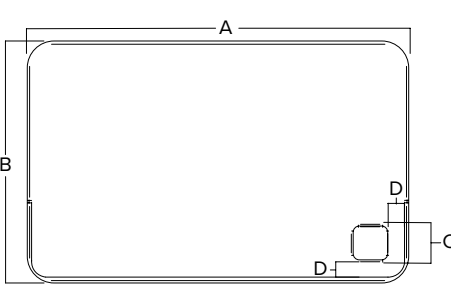
A – 19.1"/48
B – 11.7"/30
C – 5"/13
D – 3.6"/9

Height – 0.75"/2

Distance from top of arm to bottom of table:
3.5 in / 8.9 cm

LUXURY DINE-IN






A – 17.5"/44
B – 11"/28
C – 1.5"/4
D – 0.79"/2

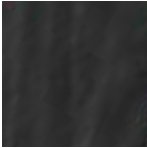
Height – 0.87"/2

Distance from top of arm to bottom of table:
2.5 in / 6.4 cm

* Double Pivot

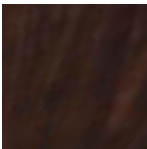
TABLE COMPARISON






CLASSIC GREY

Our classic grey tray table is the ultimate style actor; a cohesive accessory to any design or colour of seating. The texture emulates wood grain, helping to create a layer of luxury to the dining experience.



CHOCOLATE BROWN

To add style and elegance to your theatre seating, selecting a table in our rich chocolate brown option is a key choice. The dark brown base is flecked with shades of rust and embossed with a subtle grain that adds just a hint of texture to the smooth surface.




SUPER REAL WALNUT

Elevate your space with the timeless elegance of our super real walnut finish, featuring deep, rich tones and a beautifully refined grain that adds sophistication to any setting.

TABLE LIGHT

The Stingray table light provides a soft glow with no peripheral interference. This allows moviegoers to better read your menu.

For a full list of detailed specs, please contact your Encore Sales Representative.



“Various Galaxy people have all volunteered that [Encore] chairs in Tucson are the most comfortable in our circuit.”

Rafe Cohen
COO/President - Galaxy Theatres, LLC

ENCORE CINEMA CUSTOMERS

U.S.A. CUSTOMERS















CANADIAN CUSTOMERS



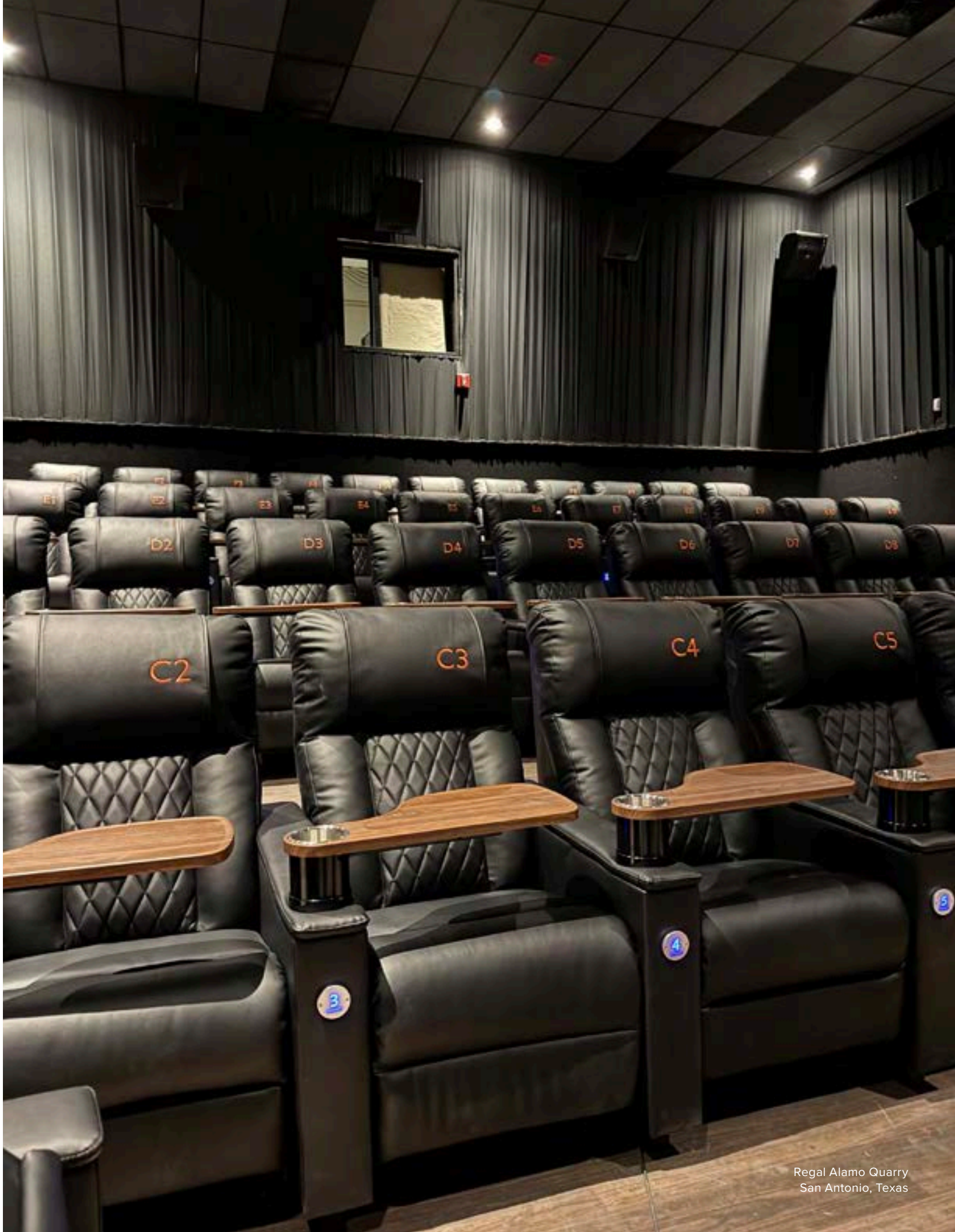


INTERNATIONAL CUSTOMERS









Regal Alamo Quarry
San Antonio, Texas

