



[www.cmrocks.org](http://www.cmrocks.org) | [301-637-0730](tel:301-637-0730) | [info@cmrocks.org](mailto:info@cmrocks.org)



## What's new at Reach this month

July 2025

### We're Launching an Advocacy Event Series - Join Us This September



**9/04**  
7:00 pm

#### Understanding and Reporting Hate Bias and Crimes

Living Faith Lutheran Church  
1605 Veirs Mill Rd., Rockville, MD

**9/15**  
6:30 pm

#### Why Voting Matters

B'nai Israel Congregation  
6301 Montrose Rd., Rockville, MD

This September, Reach is hosting two events aimed at community and civic engagement, with more planned over the coming months. We welcome everyone to join us to explore these important topics that are more relevant than ever.

[See Details and  
RSVP](#)

Senior Reach in Action: Supporting  
Clients When Family Can't

Board Spotlight:  
Aman Singh



When Senior Reach client Ms. E learned she needed to undergo a medical procedure, she was worried because she did not have anyone to drive her home afterward or to perform a post-procedure check on her, as her doctor recommended.

Fortunately, Ms. E contacted Senior Reach Client Services Director Ali Robinson, who gladly picked her up from her appointment and sat with her for an hour or so afterward to ensure she recovered well. Ms. E, whose family no longer lives close enough to help, was thankful that Ali was there to support her.

*// I was blown away by the variety of programs [Reach] offers to support our community.*

Aman Singh,  
Board Member



Last month, we announced four additions to Reach's Board of Directors, including Aman Singh. This month, we are featuring Aman and what inspired him to join the Board.

[Read the full article](#)

## Thank you to CareFirst Volunteers!



A great group of volunteers from CareFirst support Rockland House with landscaping, cleaning, and yard work to help keep the garden and back yard usable. Thank you support Reach as part of CareFirst's Week of Equity and Action!

## Reach Volunteer Hettie Fleming Receives the Neal Potter Path of Achievement Award



Hettie Fleming, a long-time volunteer with Reach and other local nonprofits, was awarded the Neal Potter Path of Achievement Award by Montgomery County

## Website Launch Update

We are working hard to finish our new website.

in recognition of her lifelong commitment to volunteer work. Check out our volunteer spotlight to learn more!

[Read the full article](#)

However, due to unforeseen circumstances, our launch date has been extended until early-to-mid August. Stay tuned!

---

## Reach Finalizes 3-Year Strategic Plan

On July 1st, Reach and MKHC finalized our new strategic plan. For the next three years, we aim to build organizational capacity and raise Reach's profile in Montgomery County by strengthening our board; expanding our volunteer base; and reviewing, developing, and implementing internal policies and procedures for personnel and programs.

We also aim to secure new revenue sources, improve our communications and public relations, and enhance our services.

If you want to learn more about our strategic plan, contact Sarah, our executive director at [sbasehart@cmrocks.org](mailto:sbasehart@cmrocks.org)

---

## MKHC Welcomes Elected Officials for Open House



On July 30, Reach welcomed elected officials from across the county for an open house at MKHC. The event provided a valuable opportunity for seven attendees connect with Reach and MKHC staff, learn more about the services we offer, and tour our relatively new space.

We were proud to host this gathering and share our work with those who help shape our community.

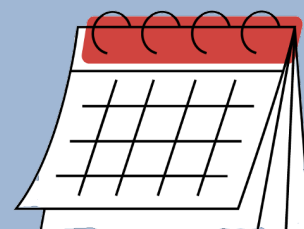
*Photo credit: Office of Councilmember Andrew Friedson*

---

## Mark Your Calendar

**National Night Out**  
August 5, 2025

**"Understanding Hate Bias and Crimes" Panel Presentation**  
Thursday, September 4th, 7:00 pm



### "Why Voting Matters" Presentation

Monday, September 15th, 6:30 pm

B'nai Israel Congregation

[RSVP](#)

---

## Volunteer With Us

### MKHC Volunteer Coordinator

#### Assistant

MKHC is looking for a dedicated volunteer to support the coordination of our volunteer program, including scheduling volunteer providers and interpreters, maintaining records, and generating reports on volunteer hours.

This role is ideal for someone who is detail-oriented, organized, and passionate about supporting community efforts.

### Room Painting at Rockland House

A number of bedrooms and common areas at Rockland House still need to be repainted. This is a great day project for a group! Supplies will be provided.

Contact [volunteer@cmrocks.org](mailto:volunteer@cmrocks.org)  
if you're able to help with these requests.

[View other volunteer opportunities](#)

---

## Donation Requests

### MKHC:

- A large whiteboard (approx. 6 feet)
- Paper towels, liquid hand soap, facial tissues, toilet paper, post-it notes

### Housing Program:

*General:* Toilet paper, paper towels, laundry detergent (pods), cleaning supplies

#### *Jefferson House*

- oven mitts and kitchen sink mat
- pots and pans set including baking trays, roasting pan
- clear refrigerator separators

### *Rockland House*

- Flashlights & batteries
- First Aid kit
- Towels and washcloths
- Swiffer mop head replacement
- Pots & pans
- Kitchen glassware
- Bed linen for a queen sized bed
- Dish cloths and towels

**For more information on current needs or to donate, please contact us at [development@cmrocks.org](mailto:development@cmrocks.org).**

### **Community Reach of Montgomery County Board of Directors**

Board Chair Judy Ackerman, George Ashton, Brian Bellamy,  
Rae Pearl Canizares, Susan Graceson,  
Debra Jacobs, Treasurer Lou Kallas, Jan May, Frank Nice,  
Secretary Suzanne Rotbert, Aman Singh, Jim Skinner,  
Erik Swanson, Nancy Sushinsky  
Ex-Officio Donna Perry, Chair, MKHC Board

### **MKHC Board of Directors**

Chair Donna R. Perry MD, Ryan Bertoli, Douglas Brough PhD,  
Jackie Lobien RN, Susana Najera MS, Kate Stradar MBA RN,  
Stephanie Wright FNP PhD Ex-Officio Judy Ackerman, Chair, Reach Board,  
Ex-Officio Angeline Lazarus, MD, Medical Director

**Donate to support Reach**



Community Reach of Montgomery County | 1010 Grandin Ave #A1 | Rockville, MD 20851 US

[Unsubscribe](#) | [Update Profile](#) | [Constant Contact Data Notice](#)



Try email marketing for free today!