



www.cmrocks.org | 301-637-0730 | info@cmrocks.org



What's new at Reach this month

August 2025



Cruising Towards Independence: Mr. W at the Wheel

Jefferson House resident Mr. W came to Reach's Housing Program with a goal: he wanted to own a car and reduce his reliance on public transport. This summer, he made it happen by purchasing a car, marking a major step forward in his path to independence.

He smiled with joy when he drove home for the first time, stating: "I told you I was going to do it." Our staff knew that whatever he put his mind to, he could accomplish.

This milestone has empowered Mr. W to manage his own transportation to appointments, recovery meetings, and daily activities. Congratulations to Mr. W on this significant step in his journey towards future independent living!

Next Week: Understanding and Reporting Hate Bias and Crimes Panel

The first of Reach's recently launched advocacy events will take place next week. Join us on September 4th for a panel presentation on how to recognize, report, and respond to hate in our community.

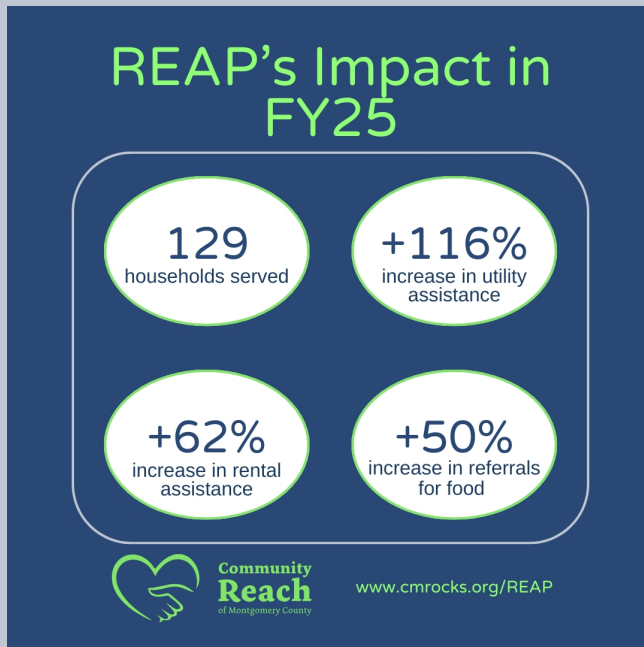
Thursday, September 4 | 7:00–9:00 PM
Living Faith Lutheran Church
1605 Viers Mill Rd., Rockville, MD



LOP Helps 38 Students on Road to Citizenship

The Language Outreach

A Lifeline in Rockville: REAP Responds to Increased Need



Mr. Z, an elderly Rockville resident, needed help getting his water turned back on before the heat of summer hit, so he turned to REAP.

His family is just one of many that received assistance from REAP in FY25 as the program increased utility and rental support compared to FY24, thanks to ongoing support from the City of Rockville government.

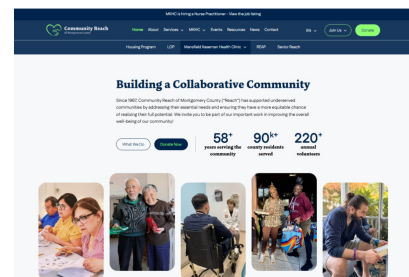
Read more about Mr. Z and REAP's impact this year.

Read the full article

MKHC Launches Two New Initiatives

Program (LOP) offers citizenship preparation to help legal residents study for the citizenship test and interview. We're proud to share that this year, 38 students submitted their applications to the Department of Homeland Security with help from LOP, and many have already received citizenship. Congrats to these new citizens!

Reach's New Website is Live!



You might notice this newsletter features a new color scheme and refreshed logo. These changes come with the launch of our new website that took place earlier this month.

If you haven't seen it yet, take a look!

Explore the new website

New Software to Improve Donor Relations

Reach is in the process of upgrading to a new customer relationship management (CRM) system. The new platform



will help us be more efficient and communicate more effectively with our supporters and better track the many ways they contribute to Reach's success. We look forward to this long-awaited change. Stay tuned for updates!

Last month, we quietly launched two new Mansfield Kaseman Health Clinic (MKHC) initiatives: MKHC Caring Clinicians and the MKHC Patient Relief Fund.

MKHC Caring Clinicians is our first year-round, peer-to-peer fundraiser to recruit practicing and retired clinicians (doctors, nurses, and other healthcare professionals) to help us raise \$50,000 for MKHC to continue to provide high-quality, patient-centered healthcare to uninsured, Medicare, and Medicaid patients.

The MKHC Patient Relief Fund is our first initiative to raise at least \$10,000 in direct financial assistance for MKHC patients to cover costly medical evaluations that they would not otherwise be able to afford. Both initiatives aim to ensure that MKHC patients can access the critical medical care they need to live healthier lives. Visit our website for more information or to support our efforts.

[Learn more about Caring Clinicians](#)

[Learn more about the Patient Relief Fund](#)

Mark Your Calendar

"Understanding Hate Bias and Crimes" Panel Presentation

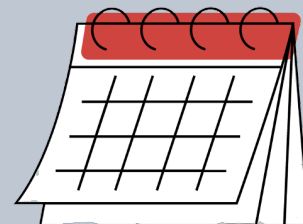
Thursday, September 4th, 7:00 pm
Living Faith Lutheran Church

[**RSVP**](#)

"Why Voting Matters" Presentation

Monday, September 15th, 6:30 pm
B'nai Israel Congregation

[**RSVP**](#)



Corporate Donor Appreciation Event

October 23rd, 5:30-7:00pm
Mansfield Kaseman Health Clinic
9420 Key West Avenue, #400
Rockville, MD 20850
Stay tuned for details!

Volunteer With Us

MKHC Volunteer Coordinator

Assistant

MKHC is looking for a dedicated volunteer to support the coordination of our volunteer program, including scheduling volunteer providers and interpreters, maintaining records, and generating reports on volunteer hours.

This role is ideal for someone who is detail-oriented, organized, and passionate about supporting community efforts.

Contact volunteer@cmrocks.org
if you're able to help with these requests.

[View other volunteer opportunities](#)

Room Painting at Rockland House

A number of bedrooms and common areas at Rockland House still need to be repainted. This is a great day project for a group! Supplies will be provided.

Donation Requests

MKHC:

- A large whiteboard (approx. 6 feet)
- Paper towels, liquid hand soap, facial tissues, toilet paper, post-it notes

Housing Program:

General: Toilet paper, paper towels, laundry detergent (pods), cleaning supplies

Jefferson House

- oven mitts and kitchen sink mat
- pots and pans set including baking trays, roasting pan

- clear refrigerator separators

Rockland House

- Flashlights & batteries
- First Aid kit
- Towels and washcloths
- Swiffer mop head replacement
- Pots & pans
- Kitchen glassware
- Bed linen for queen size
- Dish cloths and towels

For more information on current needs or to donate, please contact us at development@cmrocks.org.

Community Reach of Montgomery County Board of Directors

Board Chair Judy Ackerman, Brian Bellamy,
Rae Pearl Canizares, Susan Graceson,
Debra Jacobs, Treasurer Lou Kallas, Jan May, Frank Nice,
Secretary Suzanne Rotbert, Aman Singh, Jim Skinner,
Erik Swanson, Nancy Sushinsky
Ex-Officio Donna Perry, Chair, MKHC Board

MKHC Board of Directors

Chair Donna R. Perry MD, Ryan Bertoli, Douglas Brough PhD,
Jackie Lobien RN, Susana Najera MS, Kate Stradar MBA RN,
Stephanie Wright FNP PhD Ex-Officio Judy Ackerman, Chair, Reach Board,
Ex-Officio Angeline Lazarus, MD, Medical Director

Donate to support Reach



Community Reach of Montgomery County | 1010 Grandin Ave #A1 | Rockville, MD 20851 US

[Unsubscribe](#) | [Update Profile](#) | [Constant Contact Data Notice](#)



Try email marketing for free today!