



[www.cmrocks.org](http://www.cmrocks.org) | [301-637-0730](tel:301-637-0730) | [info@cmrocks.org](mailto:info@cmrocks.org)



## What's new at Reach this month

April 2026



### The Power of Partnership: MKHC & The Radiology Clinic

Ten uninsured MKHC patients received essential radiology procedures at very low cost thanks to MKHC's partnership with The Radiology Clinic and the MKHC Patient Relief Fund.

[Read the full story](#)

### A HISTORIC INVESTMENT IN MKHC'S FUTURE



"We hope our donation not only supports the mission of MKHC but also encourages others to contribute and help sustain its important work."



We're honored to announce that MKHC has received the largest individual gift in its history—a \$100,000 investment in our future. This generous contribution comes from supporters who first



### SUPPORTER SPOTLIGHT: CAPITAL BANK

We are proud to spotlight Capital Bank—a longtime corporate supporter, loyal gala sponsor, and partner in Reach's mission. Learn how our partnership has developed over two decades.

[Read the full story](#)

**LOP at County Citizenship**

experienced our work up close through our outsourced finance team.

This funding optimizes MKHC's working capital and allows the organization to establish an endowment, creating long-term stability and helping ensure that our work supporting underserved patients can continue for years to come.

Thank you to Maria Thomas and Chris Otley for their extraordinary generosity. Read our interview to learn what inspired their gift and why they believe in MKHC's mission.

[Read the full story](#)

**Watch us on Living Local DMV!**



Reach & MKHC will be featured on Living Local DMV on May 11th at 2pm! Stay tuned for the link to watch the interview with our ED Sarah Basehart and MKHC Managing Director Carmen Lezama!

## Screening Clinic



This month, LOP was invited to participate in the Citizenship Clinic hosted by Montgomery County and the Governor's Office of Immigrant Affairs, aimed at connecting permanent residents who want to become citizens with information and resources to do so. LOP's citizenship classes help students prepare for the civics test, improve their language skills for the English proficiency portion, and learn to complete the application form.

## Less Than Three Weeks to the Woven Together Gala!

Now's the time to get your tickets or sponsorship! We hope you join us on May 16th at the Hilton Rockville for an evening of fun and philanthropy.

[Get tickets and sponsorships](#)

## Mark Your Calendar

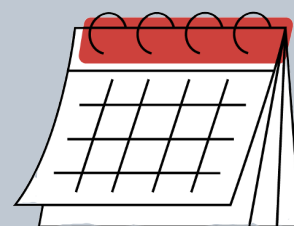
### Woven Together Reach-MKHC Gala 2026

Saturday, May 16, 6-10 p.m.  
Hilton Rockville

[More info](#)

### LOP Graduation

Thursday, June 18th, 7:00 p.m.



## Volunteer With Us

### Gala Set-Up

Help with setting up the silent auction, prepping the ballroom, and other pre-event tasks on May 16th from 12-5pm. A few volunteers are also needed during the event from 5-10pm (dinner is provided!)

### MKHC Interpreters

Help our patients and medical providers communicate effectively by providing translation services for English and Spanish speaking patients.

Volunteers must be 18+ years old and able to work a four-hour shift once per week.

Requires a background check.

Contact [volunteer@cmrocks.org](mailto:volunteer@cmrocks.org) if you're able to help with these requests.

[View other volunteer opportunities](#)

## Donation Requests

### MKHC:

- Lysol spray, paper towels, liquid hand soap, facial tissues, toilet paper, dish soap, feminine hygiene products for patient use
- Amazon wishlist:  
[https://www.amazon.com/hz/wishlist/ls/1W7K3J9KXANI4/ref=hz\\_ls\\_biz\\_ex](https://www.amazon.com/hz/wishlist/ls/1W7K3J9KXANI4/ref=hz_ls_biz_ex)

### Housing Program:

*General:* Toilet paper, disinfectant wipes, dish soap, sponges, bleach/Comet, multi-purpose cleaner, laundry detergent (pods), dryer sheets, tin foil, soft pad cleaning mop similar to Swiffer WetJet

#### *Jefferson House*

- bath towels & washcloths
- plastic food storage containers
- curtain panel
- dish towels
- oven mitts and kitchen sink mat
- baking trays, roasting pan
- clear refrigerator separators
- kitchen utensils (knives in particular)
- new or gently used crockpot

- drip coffee pot and filters
- art supplies (canvas, brushes, paint, smock)

#### *Rockland House*

- Toaster oven
- Flashlights & batteries
- Towels and washcloths
- Kitchen glassware
- Dish towels
- Cordless phone

For more information on current needs or to donate, please contact us at [development@cmrocks.org](mailto:development@cmrocks.org).

### **Community Reach of Montgomery County Board of Directors**

Board Chair Judy Ackerman, Brian Bellamy,  
Rae Pearl Canizares, Susan Graceson,  
Debra Jacobs, Treasurer Lou Kallas, Vice Chair Jan May, Frank Nice,  
Secretary Suzanne Rotbert, Aman Singh,  
Erik Swanson, Nancy Sushinsky  
Ex-Officio Donna Perry, Chair, MKHC Board

### **MKHC Board of Directors**

Chair Donna R. Perry MD, Ryan Bertoli, Douglas Brough PhD,  
Jackie Lobien RN, Sai Majji, Deborah Miller-Young, Susana Najera MS,  
Lourdes Parry, Kate Stradar, MBA RN, Stephanie Wright FNP PhD,  
Ex-Officio Judy Ackerman, Chair, Reach Board,  
Ex-Officio Angeline Lazarus, MD, Medical Director

**Donate to support Reach**



Community Reach of Montgomery County | 9420 Key West Avenue #400 | Rockville, MD 20850 US

[Unsubscribe](#) | [Update Profile](#) | [Constant Contact Data Notice](#)



Try email marketing for free today!