



www.cmrocks.org | [301-637-0730](tel:301-637-0730) | info@cmrocks.org



What's new at Reach this month

May 2026



Our Woven Together Gala: Bringing Together a Community That Cares

The Woven Together gala took place on May 16th, with a silent auction, special recognition for long-term and major donors, and a fun music and dance performance by Soul in Motion! Thank you to everyone who joined us to celebrate Reach's and MKHC's joint impact.



Reach and MKHC were featured on two local TV channels this month, highlighting both the gala and our work on the community. Check out the interviews!

Living Local DMV: [Watch now](#)

WUSA9: [Watch now](#)

[View event photos](#)

REAP: A Lifeline at the Right Time

After more than a decade of being a homeowner, a workplace injury put Ms. F at risk of losing her home. With REAP's support to cover her overdue mortgage payments, help her enroll in SNAP, and connect her

MKHC to Pilot Food as Medicine Program in Partnership with Community Farmshare



We're excited to share that MKHC has been awarded funding to launch a Food as Medicine program. This initiative will provide food-insecure patients managing chronic conditions like diabetes and hypertension with weekly access to fresh, locally grown fruits and vegetables from Community Farmshare.

In addition to receiving healthy food, participants will engage in a hands-on nutrition education program tailored to their health needs, helping build knowledge and lasting habits.

By addressing both food insecurity and diet-related disease, this program will improve health outcomes for uninsured residents while strengthening our local food system. We are proud to partner with Community Farmshare and the Office of Food Systems Resilience to bring this project to life.

Our Mission in Action: Senior Reach



May is Older Americans Month, the perfect time to reaffirm our commitment to serving older adults and explore how Senior Reach

to legal resources, she is now working toward regaining stability.

[Read the full story](#)

Maryland Primary Candidates Forum on June 7th



GET VOTER-READY!
In Person Only | FREE and Open to the Public

Reach is co-sponsoring Temple Beth Ami's Maryland Primary Candidates Forum on Sunday, June 7 at 9:45 a.m. This forum offers a valuable opportunity to hear from all County Executive candidates, as well as nearly all candidates for State Delegate in Districts 15, 16, 17, and 39, representing both Democratic and Republican parties. The event will feature moderated panel discussions addressing a wide range of issues important to voters.

For more information on upcoming elections, visit [Vote411](#). Consider serving as an election worker to assist during elections! [Learn more.](#)

[Register for Candidate Forum](#)

Put Your Compassion in Action: Support MKHC's Year-End Appeal

embodies Reach's mission of addressing essential needs and improving the well-being of the community.

Seniors are one of the fastest growing age groups in our community; how can we make sure they all receive the specialized support they need? Through programs like Senior Reach. Originally called Elderly Ministries, Senior Reach has supported local seniors for over 40 years. Today, the program provides weekly home care, emergency alert connections, home repairs and modifications, and case management to connect clients to many other resources.

By meeting core needs like health and safety, stable housing, and social connection, Senior Reach goes beyond individual services—it helps build a stronger, more equitable community where seniors are supported and neighbors can age with dignity.



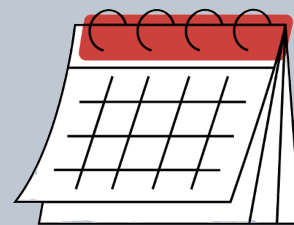
For almost two decades, MKHC has annually provided high-quality, patient-centered healthcare to thousands of uninsured individuals, improving their quality of life and that of their families. As this fiscal year comes to a close, we invite you to put your “compassion in action” by supporting our year-end appeal to raise critical funds to partially cover MKHC’s operating expenses. Our continued viability and impact depend on you and others like you who care deeply about the health and well-being of our community. Your generosity will quite literally help save lives. Join our cause. Donate today!

[Donate now](#)

Mark Your Calendar

LOP Graduation

Thursday, June 18th, 7:00 p.m.
Virtual



Volunteer With Us

Landscaping/Yardwork

MKHC Interpreters

Reach's Housing Program is looking for volunteers to help with landscaping and yardwork tasks at our house for women in Rockville. The work will help maintain a safe, clean, and welcoming environment for the residents we serve.

This is a great opportunity for corporate teams, community organizations, and volunteer groups. Volunteer hours and Student Service Learning (SSL) hours can be provided upon request.

Help our patients and medical providers communicate effectively by providing translation services for English and Spanish speaking patients.

Volunteers must be 18+ years old and able to work a four-hour shift once per week.

Requires a background check.

Contact volunteer@cmrocks.org if you're able to help with these requests.

[View other volunteer opportunities](#)

Donation Requests

MKHC:

- Lysol spray, paper towels, liquid hand soap, facial tissues, toilet paper, dish soap, feminine hygiene products for patient use
- Amazon wishlist:
https://www.amazon.com/hz/wishlist/ls/1W7K3J9KXANI4/ref=hz_ls_biz_ex

Housing Program:

General: Toilet paper, disinfectant wipes, dish soap, sponges, bleach/Comet, multi-purpose cleaner, laundry detergent (pods), dryer sheets, tin foil, soft pad cleaning mop similar to Swiffer WetJet

Jefferson House

- 3-4 seater sofa
- bath towels & washcloths
- plastic food storage containers
- curtain panel
- dish towels
- oven mitts and kitchen sink mat
- baking trays, roasting pan
- clear refrigerator separators
- kitchen utensils (knives in particular)
- new or gently used crockpot
- drip coffee pot and filters
- art supplies (canvas, brushes, paint, smock)

Rockland House

- Toaster oven
- Flashlights & batteries
- Towels and washcloths
- Kitchen glassware
- Dish towels
- Cordless phone

For more information on current needs or to donate, please contact us at development@cmrocks.org.

Community Reach of Montgomery County Board of Directors

Board Chair Judy Ackerman, Brian Bellamy,
Rae Pearl Canizares, Susan Graceson,
Debra Jacobs, Treasurer Lou Kallas, Vice Chair Jan May, Frank Nice,
Secretary Suzanne Rotbert, Aman Singh,
Erik Swanson, Nancy Sushinsky
Ex-Officio Donna Perry, Chair, MKHC Board

MKHC Board of Directors

Chair Donna R. Perry MD, Ryan Bertoli, Douglas Brough PhD,
Jackie Lobien RN, Sai Majji, Deborah Miller-Young, Susana Najera MS,
Lourdes Parry, Kate Stradar, MBA RN, Stephanie Wright FNP PhD,
Ex-Officio Judy Ackerman, Chair, Reach Board,
Ex-Officio Angeline Lazarus, MD, Medical Director

Donate to support Reach



Community Reach of Montgomery County | 9420 Key West Avenue #400 | Rockville, MD 20850 US

[Unsubscribe](#) | [Update Profile](#) | [Constant Contact Data Notice](#)



Try email marketing for free today!