

In Pursuit of Health Equity

2021 IMPACT REPORT

CHRT



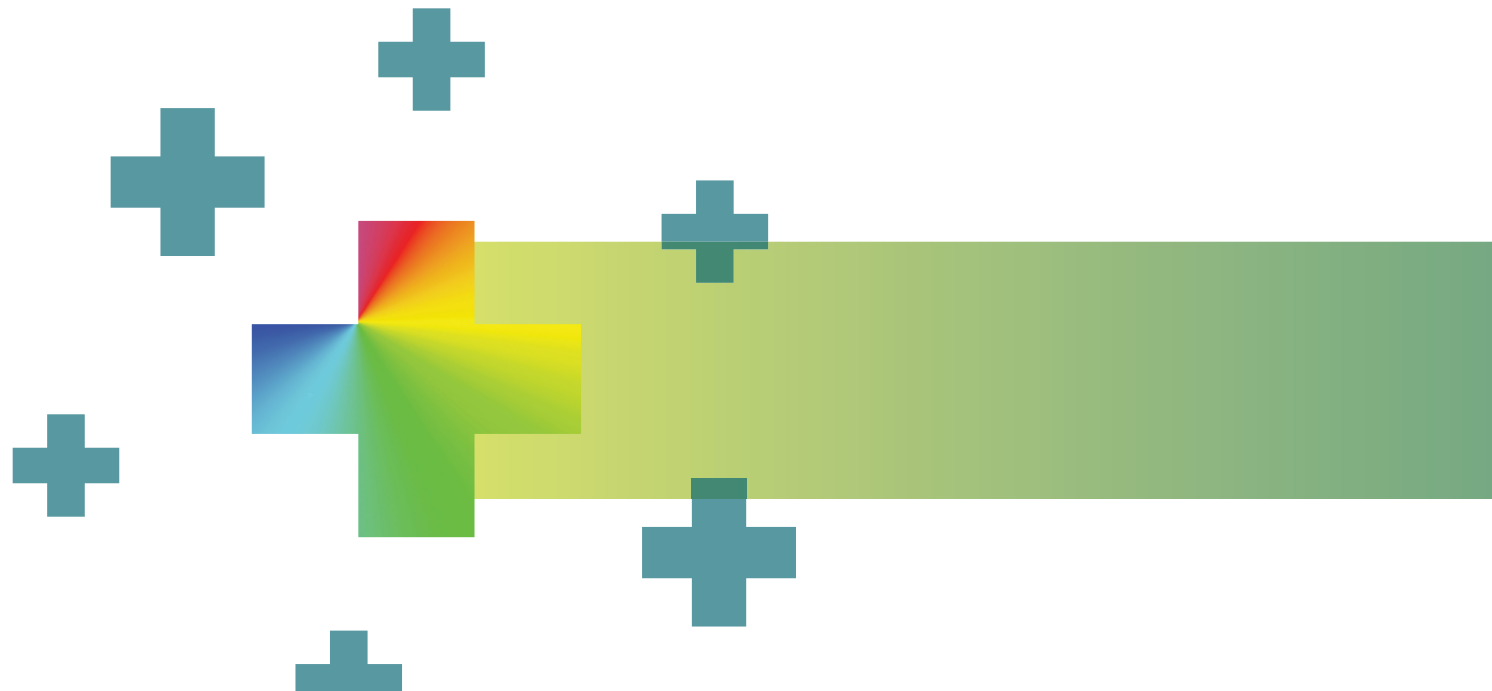
In Pursuit of Health Equity

Friends —

In the second year of the pandemic, vaccines became widely available, but more died of COVID. American Indians, African Americans, and seniors experienced the highest rates of morbidity, demonstrating the fragile health of these historically marginalized populations, as well as longstanding health disparities driven by social influencers of health. Behavioral health concerns skyrocketed. As did job losses, substance use concerns, and other social, behavioral, and economic problems.

That knowledge, and the grief we've experienced losing loved ones to the virus, has redoubled our commitment to public health.

CHRT's 2021 work—managed by our dedicated, mission-driven, growing team—addressed all of these issues through research and evidence-based recommendations for policymakers and decision leaders.



Of particular note, in 2021 CHRT

- Produced a series of briefs to inform policymakers and practitioners about how to support caregivers, physicians, and communities throughout the pandemic;
- Began a major Promotion of Health Equity initiative with partners across the state;
- Completed a three-year national initiative focused on building equitable and thriving communities through integrated care;
- Significantly advanced its focus on caregivers, who have faced tremendous stressors and setbacks during the pandemic;
- Launched a demonstration project to provide home-based health and social care to seniors and people with disabilities;
- Helped non-profit clients build a path toward long-term financial sustainability while advancing strategic objectives;
- Began to systematically apply an equity lens across each project in our growing portfolio; and more.

In the pages that follow, you'll find highlights from the year, sharing these and other initiatives.

It feels right to document this work—to recognize all of the positive accomplishments you, and our team members, have fueled in the midst of a very challenging year.

We remain grateful to each of you—our staff, our clients, our funders, our partners—and we look forward to continuing to work with you to advance the health of our community, our state, and our nation next year, and in the years to come.



TERRISCA DES JARDINS
Executive Director,
Center for Health and Research
Transformation (CHRT)



TONY DENTON
Chair, CHRT Board of Directors
Senior Vice President and Chief Operating
Officer, University of Michigan Health –
Michigan Medicine



2021 Strategic Goals

GOAL #1

Be, and be known as, a source for evidence-based, non-partisan information on health policy issues and trends.

GOAL #2

Help community-based health collaborations improve population health and magnify their impact.

GOAL #3

Build the evidence base for local and state programs that can be replicated and scaled to improve health and social welfare.



2021 GOAL #1

Be, and be known as, a source for evidence-based, non-partisan information on health policy issues and trends.



Physician burnout.

CHRT fielded a survey to gather Michigan primary care provider perspectives on burnout before and during the COVID-19 pandemic. More than 2,000 physicians responded, and the prevalence of self-reported symptoms of burnout had increased from 31 percent in 2018 to 40 percent in 2021. Further, more than a quarter agreed or somewhat agreed that COVID-19 made them feel burned out and consider leaving medicine.

CHRT's Michigan Physician Survey explores the perspectives of primary care providers. Michigan physicians are asked to describe their patient and practice characteristics, their services, and more.



COVID vaccination.

Between March 19 and April 1, 2021, CHRT fielded a supplement to its regular Cover Michigan Survey to better understand who wasn't getting vaccinated against COVID-19 and why. Those less likely to have received at least one dose of the vaccine had lower incomes, no health insurance, or no medical home. Eighty-six percent of those who did not intend to get vaccinated reported that they were worried about vaccine-related side effects.

CHRT's Cover Michigan Survey was developed in 2009 to explore health status, health insurance coverage, and health care access trends for populations across the state of Michigan.



Unpaid caregivers.

CHRT scanned the current state of caregiver support programs across Michigan and the U.S. and produced three briefs about the needs of unpaid caregivers. The first brief reviewed six state and federal policy options to support unpaid caregivers, the second analyzed how COVID-19 had impacted caregivers, and the third analyzed the current state and evidence-base of programs supporting Michigan's 1.7 million caregivers.

CHRT's work on unpaid caregiving was funded by the Michigan Health Endowment Fund and the National Institute on Disability, Independent Living, and Rehabilitation Research.



Annual wellness visits.

CHRT researched annual wellness visit use among persons with physical disabilities from 2008 to 2016—before, during, and after the rollout of the Affordable Care Act (ACA). Researchers considered insurance type, race, sex, and disability type to determine how persons with disabilities used AWVs. While AWV use increased after the passage of the ACA, persons with disabilities were 15 percent less likely to use AWVs than the general population.

CHRT's paper on annual wellness visits for persons with physical disabilities was supported by the National Rehabilitation Research and Training Center and published in the *Annals of Family Medicine*.



Health policy fellowship.

Since 2012, 122 health service researchers, policymakers, and nonprofit leaders have completed CHRT's four-month Health Policy Fellowship program. In the midst of the COVID-19 pandemic—to secure the safety of fellows, staff, and the community—CHRT put its traditional fellowship on hold but organized a series of remote learning sessions for fellowship alumni who were interested in refreshing their skills and building their networks.

CHRT's Health Policy Fellowship brings together policymakers, researchers, and nonprofit fellows to learn about health policy and the research process.



2021 GOAL #2

Help community-based health collaborations improve population health and magnify their impact.



Collective action.

CHRT provided backbone support to a coalition of 200 volunteers from 100 community agencies dedicated to improving health, health care, and health equity across Washtenaw County. In 2021, CHRT helped these volunteers launch new projects to address health disparities, facilitated volunteer work groups to advance their objectives and impact, informed more equitable and just policies in the community, and more.

The Washtenaw Health Initiative focuses on improving health, health equity, and health care for low-income, uninsured, under-insured, and underrepresented populations across Washtenaw County.



Care coordination.

CHRT launched a complex care management program staffed by two-dozen care managers and community health workers at medical, behavioral, and social service agencies. We enhanced data collection, facilitated quality improvement and care coordination meetings, managed community-based referrals, developed new partnerships, and distributed funding to partners to address some of the most pressing effects of the COVID-19 pandemic.

MI Community Care is an initiative designed to improve the health and well-being of residents with complex needs, enhance capacity at participating organizations, and reform the regional care system.



Learning community.

CHRT facilitates a learning community for a dozen regional and statewide organizations working to advance health equity in Genesee, Jackson, Kent, Livingston, and Washtenaw Counties. In 2021, the organizations developed a shared mission and vision for the network, identified key equity metrics across all regions, established an evaluation plan, reviewed technology platforms, and developed best practices for data collection.

The Health Equity Learning Network works to develop an equitable system of integrated medical, behavioral, and social services that empower communities to achieve optimal health for everyone.



Homelessness diversion.

CHRT brought together housing and homelessness partners to identify areas of need and develop activities to improve the homeless response systems in Livingston and Washtenaw Counties. CHRT then assessed housing needs in both counties and provided backbone support, proposal writing, and data support for a pilot program that trained frontline workers and support staff in implementing a homelessness diversion model.

Improving the homeless response system is a collaboration between several different shelters, housing and supportive housing providers, homelessness prevention agencies in Washtenaw County.



Vital seniors.

CHRT led preliminary work to develop a community-integrated health network to address the social needs of seniors in southeast Michigan. This involved providing backbone support to a group of local partners and, through a collective impact model, helping them identify shared values and objectives. The network designed and implemented a Home Nutrition+ pilot to serve vulnerable adults in Washtenaw County.

The Vital Seniors Initiative, managed by the Ann Arbor Area Community Foundation (AAACF) and funded by the Glacier Hills Legacy Fund, addresses key challenges faced by seniors and their caregivers.



2021 GOAL #3

Build the evidence base for local and state programs that can be replicated and scaled to improve health and social welfare.



Workforce shortages.

For the Behavioral Health Workforce Resource Center, CHRT researched the impact of public health emergencies on behavioral health care providers and clients, the potential benefit of employing community health workers to connect patients with integrated physical and behavioral health services, and the types of behavioral health providers that integrate services into the primary care setting in rural and urban areas across Michigan.

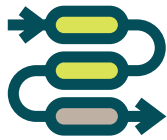
Behavioral health workforce research was funded by the U.S. Health Resources and Services Administration and the U.S. Substance Abuse and Mental Health Services Administration



Long-term services.

CHRT informed the state of Michigan's long-term services and supports (LTSS) strategic plan. Staff reviewed best practices on key LTSS options and equity initiatives, conducted an environmental scan of federal opportunities, and provided examples of how states have structured their LTSS programs. CHRT also conducted a series of internal and external key informant interviews, and completed a literature review, to inform recommendations.

LTSS encompass a variety of health, health-related, and social services that assist individuals with functional limitations related to physical, cognitive, or mental conditions or disabilities.



Integration framework.

CHRT identified a framework to facilitate the integration of historically siloed health, behavioral health, and human service systems. The EVOLVE integration framework—which describes essential work in Environment, Values, Opportunity, Leadership, Validation, and Engagement—highlights the key factors to consider when developing a well-functioning, sustainable, and integrated health and human services system.

The EVOLVE project was funded by The Kresge Foundation. The research was published in the American Public Human Services Association's Policy and Practice Magazine.



Pediatric integration.

CHRT evaluated the effectiveness of two pediatric integration initiatives in Wayne County to determine whether integration improved patient outcomes and the quality of pediatric care. The evaluation found that both patients and physicians benefited from easy access to a trained behavioral health consultant. CHRT developed a financial impact calculator to help pediatric practices determine the cost and benefits of employing behavioral health consultants.

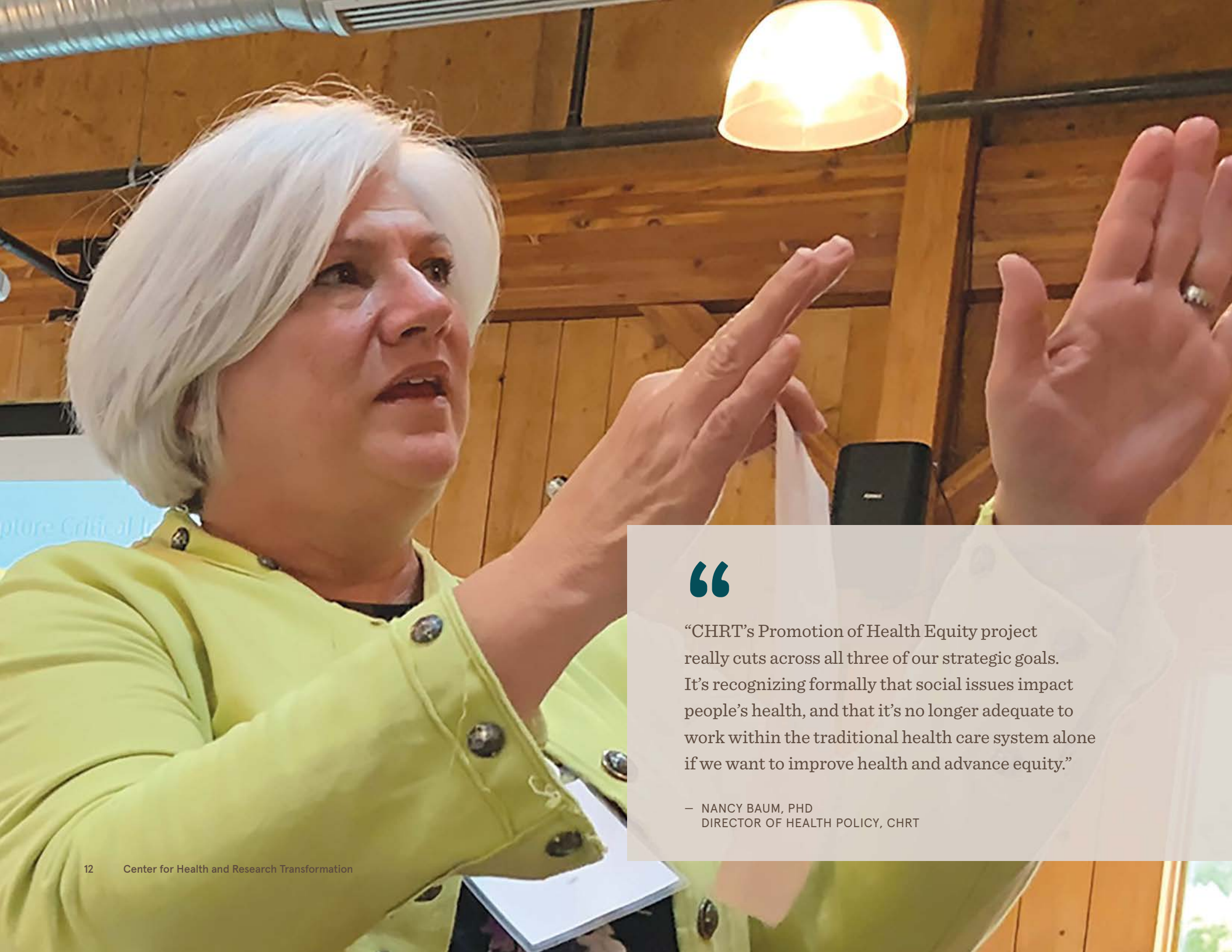
CHRT's research on the impact of pediatric integration on people, providers, and health systems was conducted in collaboration with Starfish Family Services and the UM School of Public Health.



Social needs.

CHRT is providing fiscal and strategic support to five regional initiatives working to integrate health, behavioral health, and social services to address social needs, improve health outcomes, and reduce disparities for Michigan residents. To identify health disparities, the initiatives collaborated with other partners to develop a statewide infrastructure for collecting, analyzing, and reporting on the social needs of regional participants.

Michigan's Promotion of Health Equity initiative is funded by the U.S. Centers for Medicare & Medicaid Services and the Michigan Department of Health and Human Services.



“

“CHRT’s Promotion of Health Equity project really cuts across all three of our strategic goals. It’s recognizing formally that social issues impact people’s health, and that it’s no longer adequate to work within the traditional health care system alone if we want to improve health and advance equity.”

— NANCY BAUM, PHD
DIRECTOR OF HEALTH POLICY, CHRT



“

“The Kresge Foundation’s Health team partnered with CHRT to conduct a study to describe and understand models for integrating health and human services. The goal of the study was to define opportunities for developing systems that could improve outcomes for children and families in communities. These findings enabled the Kresge Foundation to more effectively invest in multiple sites across the country seeking to strengthen their approach to service delivery”

– PHYLLIS MEADOWS, PHD, MSN, RN
SENIOR FELLOW – HEALTH, THE KRESGE FOUNDATION



“

“Starfish Family Services partnered with CHRT to create and facilitate an evaluation plan for a very important grant. CHRT worked tirelessly and collaboratively with my team, and the result was a well rounded evaluation of our Pediatric Integrated Health Care model, a well written and informative paper that showed the effectiveness of the model, and an integration impact calculator that others can utilize when considering Pediatric Integrated Health Care. The evaluation accomplished the goals of the grant and created something that can help the Integration landscape for years to come.”

– MICHELLE DUPREY
NATIONAL SUBJECT MATTER EXPERT IN
PEDIATRIC INTEGRATED HEALTH CARE



2021 Publications

December 20, 2021

A look back at the journey of the Vital Seniors Initiative—and where it's heading next

Deana Smith, Matt Hill, Allison Fritsch, Erin Horne

December 14, 2021

Michigan's physicians and health care providers are burnt out: Can we help them navigate pandemic pressures?

Melissa Riba, Karin Teske, Marissa Rurka

November 23, 2021

Here's the current state of programs supporting Michigan's 1.7 million caregivers

Patrick Kelly, Marissa Rurka, Cristin Cole, Erica Matti, Melissa Riba

November 18, 2021

Family caregiver support: learn about policy and programmatic solutions developed by state and federal agencies

Cristin Cole, Jaque King, Robyn Rontal

November 18, 2021

The COVID-19 pandemic has added significant new stressors for family caregivers – here's why that matters

Cristin Cole, Jaque King, Robyn Rontal

November 2, 2021

Integrating behavioral health consultants at pediatric clinics benefits children, but can practices afford it?

Michelle Duprey, Jung Nichols, Sarah Boyce, Shaine Reinke, Patrick Kelly, Melissa Riba, David Hutton

September 24, 2021

Annual wellness visit use among persons with disabilities in the Annals of Family Medicine

Tanima Basu, Neil Kamdar, Patrick Brady, Cristin M. Cole, Jaque King, Robyn Rontal and Diane M. Harper

July 2021

Innovative payment and care delivery models: ACOs in the USA, Handbook of Integrated Care, 2nd edition, Springer

Terrisca Des Jardins

June 17, 2021

EVOLVE, CHRT's integration framework, in APHSA Policy and Practice Magazine

Samantha Iovan, Kathryne O'Grady, Marianne Udow-Phillips

June 14, 2021

Predictive model-driven hotspotting to decrease ED visits: an RCT, Journal of General Internal Medicine

Jeremy Lapedis, Ayşe G Büyüktür, Karin Teske

June 1, 2021

New CHRT survey analyzes who in Michigan isn't getting vaccinated against COVID-19 and why

Melissa Riba, Karin Teske, Marissa Rurka,

March 21, 2021

The hidden cost of unpaid caregiving: The case for supporting unpaid caregivers across the state of Michigan

Matt Hill, Jenny Nulty, Deana Smith, Erin Spanier, Karin Teske

January 19, 2021

The advantages of becoming a federally Certified Community Behavioral Health Clinic for organizations, communities

Erica Matti, Nancy Baum



2021 Engagement

MEDIA MENTIONS

PRESENTATIONS

MEDIA MENTIONS



January 6, 2021

Trump rule forces Michigan hospitals to reveal secret prices

Detroit Free Press
by *JC Reindl*

February 15, 2021

For those without insurance, special enrollment opens today

Fox 17
by *Doug Reardon*

February 18, 2021

Nursing home COVID-19 infection rates down, hampered by other challenges

WWMT West Michigan
by *Mike Krafcik*

February 21, 2021

State of confusion: Michigan's mental health system

Crain's Detroit
by *Chad Livengood*

February 25, 2021

House Oversight Committee hearing on COVID-19 nursing home policy

13 on Your Side
by *Emma Nicolas*

March 2, 2021

Republicans seize on nursing-home deaths to weaken Democrats

Bloomberg
by *David Welch and Gabrielle Coppola*

March 10, 2021

Michigan Gov. Whitmer stands by COVID nursing home policy

Click on Detroit
by *Rod Meloni*

March 12, 2021

What we know about the impact of Whitmer's nursing home policies

Detroit Free Press
by *Clara Hendrickson and Kristen Jordan Shamus*

March 12, 2021

What we know about the impact of Whitmer's nursing home policies

PolitiFact
by *Clara Hendrickson and Kristen Jordan Shamus*

March 15, 2021

Nessel declines to investigate Whitmer's nursing home policies

Deadline Detroit
by *Allan Lengel and Violet Ikonomova*

March 15, 2021

Michigan AG Dana Nessel won't investigate

Detroit Free Press
by *Dave Boucher and Clara Hendrickson*

March 15, 2021

Michigan Republicans pushing for probe of nursing home orders

The Sault News
by *David Eggert*

March 15, 2021

Attorney General Nessel won't investigate Whitmer policies

Detroit News
by *Craig Mauger*

March 16, 2021

AG Nessel turns down Republican request for nursing home investigation

Michigan Radio
by *Steve Carmody*

March 26, 2021

Could the pandemic lead to a rethinking of how we care for the elderly?

MLive
by *Julie Mack*

MEDIA MENTIONS (CONTINUED)

March 30, 2021

Biden's Covid adviser warns lifting restrictions is like 'playing with fire'

NBC News

by Corky Siemaszko

April 6, 2021

Young people are driving the latest Covid-19 surge, especially in Michigan

NBC News

by Corky Siemaszko

April 8, 2021

Separating fact from fiction regarding Whitmer's COVID nursing home policies

Detroit Today

by Allise Hurd

April 10, 2021

Michigan is overwhelmed by another COVID-19 surge. Is Wisconsin next?

Milwaukee Journal Sentinel

by Rory Linnane, Daphne Chen and Tim Bannon

April 12, 2021

Michigan raises Covid red flag as deadlier variant stokes Midwest fears

Daily Maverick

by An Wentzel

May 31, 2021

Here are the biggest reasons Michiganders don't want the vaccine

Michigan Radio

by Kate Wells

June 3, 2021

Hertel: Michigan not undercounting nursing home deaths

Detroit Free Press

by Dave Boucher

July 7, 2021

Michigan Auditor General to study long-term care facility deaths

Detroit Free Press

by Christina Hall and Clara Hendrickson

July 12, 2021

EVOLVE framework provides model for integrating health and human services

The Kresge Foundation

by Kate McLaughlin

July 17, 2021

The case against Proposal P and the future of mental health in Michigan

WXYZ

by Chuck Stokes

August 27, 2021

Costs rising for Michigan COVID care with return of deductibles, copays

Bridge Michigan

by Robin Erb and Makayla Coffee

August 28, 2021

COVID-19 copay, deductible returns may encourage vaccination

Beckers Hospital Review

by Nick Moran

August 29, 2021

US health insurers begin charging co-pays, deductibles for COVID patients

WSWS

by Esther Galen

September 3, 2021

Opinion: Insurers are driving up the price of staying unvaccinated

The Detroit News

by Melissa Riba

October 19, 2021

Some CCBHCs will be reimbursed similar to physical health from Medicaid

State of Reform

by Patrick Jones

October 22, 2021

Even with more transparency, hospitals still charge wildly different amounts

Modern Healthcare

by Jay Greene

October 27, 2021

Hospital systems and clinics are required to post prices online, do they?

WXYZ Detroit

by Jim Kiertzner

December 8, 2021

Washtenaw County marks ten years of improving health care

Concentrate

by Jaishree Drepaal-Bruder

PRESENTATIONS



January 2021

Presentation to IDEAL RRTC on broadband internet access and implications for the health of people with disabilities

Robyn Rontal

Presentation to members of the Inter-University Consortium for Political and Social Research on Policy solutions to support family caregivers

Robyn Rontal and Cristin Cole

Presentation to the Kresge Foundation's Health and Human Services Integration Grantees integration and frameworks for success

Samantha Iovan and Marianne Udow-Phillips

March 2021

Presentation to the Washtenaw Health Plan Board of Directors on the newly funded Promotion of Health Equity Initiative

Terrisca Des Jardins

May 2021

Presentation to the UAW International Health and Safety Conference on integrating peer recovery support programs into the workplace

Matthew Hill

Presentation to the 2021 Michigan State of Reform Health Policy Conference on new approaches to long-term services and supports

Jaque King

Presentation to the Institute for Healthcare Policy and Innovation on current and past health policy collaborations

Terrisca Des Jardins, Melissa Riba, Nancy Baum and Robyn Rontal

Presentation to the University of Michigan Department of Learning Health Sciences about current and past collaborations

Terrisca Des Jardins

August 2021

Presentation to the Alliance to Advance Patient-Centered Cancer Care on ways to use communications to inform policy and practice

Erin Spanier

October 2021

Presentation to the Michigan Health Endowment Fund and Center for Health Care Strategies on Michigan's caregiver support programs

Melissa Riba and Patrick Kelly

Presentation to the Institute for Healthcare Improvement LAN on creating meaningful experiences for patients and community

Terrisca Des Jardins



2021 News

January 13, 2021

CHRT fellowship alumnus Mark Peterson argues for more support for adults with cerebral palsy and other childhood onset disabilities

February 11, 2021

Webinar: The current state of informal and family caregiving in the US, factors that impact caregiver stress, and policy solutions to support family caregivers

February 11, 2021

CHRT fellowship alumna Renu Tipirneni calls for bold policy action to address health and racial disparities in COVID-19 infection, prevention, and outcomes

February 12, 2021

Special open enrollment period allows Michigan consumers to purchase 2021 health insurance on national ACA marketplace

April 26, 2021

Please join us in welcoming our newest team members, who bring expertise in gerontology, sociology, and user experience

April 26, 2021

New board members: Toshiki Masaki of the Asian and Pacific American Affairs Commission and Dr. Amy McKenzie of BCBSM

September 28, 2021

New Health Equity Project aims to significantly reduce health disparities for vulnerable residents in five Michigan counties

October 4, 2021

Here's to administration: How a wonky thing like backbone support is improving one county's homeless response system

October 25, 2021

We're launching a community integrated health network for senior services in Southeast Michigan and beyond

2021 Partners

BOARD OF DIRECTORS

STAFF AND INTERNS

FUNDERS AND CLIENTS

BOARD OF DIRECTORS



Tony Denton, Chair
Senior Vice-President and
Chief Operating Officer,
University of Michigan Health –
Michigan Medicine



Rob Casalou, Board Treasurer
Regional President and CEO
Saint Joseph Mercy Health System



Fran Parker
Retired, Executive Director
UAW Retiree Benefit Trust



Lynda Rossi, Vice Chair
Executive Vice President,
Strategy, Government, and Public
Affairs, BCBSM



Toshiki Masaki
President, Detroit Chapter,
Japanese American Citizens League



Todd Van Tol
Senior Vice President
Health Plan Business, BCBSM



John Z. Ayanian
Director, University of Michigan
Institute for Healthcare Policy and
Innovation



Amy McKenzie
Senior Vice President and Chief
Medical Officer, BCBSM



Brent Williams
Medical Director, University
of Michigan Complex Care
Management Program

STAFF



Jeffery Barrera
FPHLP Intern



Cristin Cole
Healthcare Analyst



Emma Golub
Healthcare Analyst



Ryan Bartholomew
Senior Health Policy Analyst



Kirsten Cormier
Administrative Associate



Wendy Hawkins
Health Policy Project Manager



Nancy Baum, PhD
Health Policy Director



Vinusha Devarakonda
Website Usability Intern



Matthew Hill
WHI Project Manager



Gudrun Bossman
Senior Financial Analyst



Terrisca Des Jardins
Executive Director



Erin Horne
CE Program Manager



Ayse G. Büyüktür, PhD
Program Manager



Allison Fritsch
Intern



Samantha Iovan
Health Policy Sr. Project Mgr



“

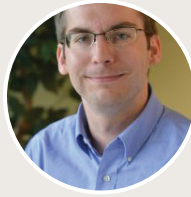
As co-director of Blue Cross Blue Shield of Michigan’s new Collaborative Quality Initiative—designed to promote health equity by addressing patients’ social needs and enhancing data systems to make equity part of quality improvement—I work with CHRT on Michigan’s five-county Promotion of Health Equity initiative. CHRT has deep roots in the community, and connections to equity leaders across the state.”

— RENU TIPIRNENI, MD
CO-DIRECTOR, MICHIGAN SOCIAL HEALTH INNOVATIONS
TO ELIMINATE DISPARITIES (M-SHIELD) CQI

STAFF



Elizabeth Jahn
Business and Finance Director



Joe Koss
Business and Finance Analyst



Augustina Nguyen
FPHL Intern



Patrick Kelly
Senior Healthcare Analyst



Amy Martinez
FPHL Intern



Angela Palek
Senior Financial Specialist



Sharon Kim
Associate Director



Erica Matti
Senior Health Policy Analyst



Gregory Powers
Sr. Communications Strategist



Jaque King
Policy Analytics Sr. Project Mgr



Madeline Mehall
Intern



Melissa Riba
Research & Evaluation Director



Robyn Rontal
Director of Policy Analytics



Kimberly Snodgrass
Health Communications



Ivana Tullet
Compliance Staff Specialist



Marissa Rurka
R&E Project Manager



Erin Spanier
Communications Director



Seaira Wainaina
Communications Intern



Andrew Smentkowski
Business Development Director



Karin Teske
R&E Senior Project Manager



Eljonna Williams
Intern



Deana Smith
Community Initiatives
Sr. Project Manager



John Tsirigotis
Healthcare Analyst



Helen Xu
Intern



FUNDERS AND CLIENTS

ABIM Foundation

Administration for Community Living

Ann Arbor Area Community Foundation

Blue Cross Blue Shield of Michigan

City of Ann Arbor

City of Detroit

Detroit Wayne Integrated Health Network

Henry Ford Health System

Huron Gastro

Huron Valley Ambulance

Institute for Healthcare Improvement

Kresge Foundation

Michigan Health Endowment Fund

Michigan Medicine

Michigan Multipayer Initiatives

Michigan Public Health Institute

MSMS Foundation

Saint Joseph Mercy Health System

Shelter Association of Washtenaw County

State of Michigan

Thome Foundation

United Auto Workers

University of Michigan

Washtenaw County



“

“In my 30-plus-year career at the Ford Motor Company, I held many roles—from engineering, public policy, and government relations to data analytics. Outside of that role, I served on Michigan’s Asian and Pacific American Affairs Commission and Health Care Information Technology Commission. I joined the CHRT board because I believe the organization is poised to make tremendous contributions to advance health equity in our state and nation.”

— TOSHIKI MASAKI
PAST CHAIR, MICHIGAN ASIAN AND PACIFIC AMERICAN
AFFAIRS COMMISSION



“

“As I step down from the CHRT board following many years of service, I reflect on the very crucial role that CHRT played in Michigan’s Medicaid expansion. Across the state, many questioned whether Michigan’s physicians had the ability to provide services to the hundreds of thousands of residents who would be newly covered by Medicaid. CHRT found that Michigan’s physicians did have that capacity. The research was influential in the governor and legislature’s decision to expand Medicaid as part of the Affordable Care Act.”

— JOHN Z. AYANIAN
DIRECTOR, UNIVERSITY OF MICHIGAN INSTITUTE
FOR HEALTHCARE POLICY AND INNOVATION



2021 Financial Position

Audited statement of financial position

December 31, 2021

ASSETS	
CURRENT ASSETS	\$1,325,255
Cash and cash equivalents	\$805,581
Contracts receivable	\$44,218
Total current assets	\$2,175,054
Property and equipment, net	\$23,616
Total assets	\$2,198,670

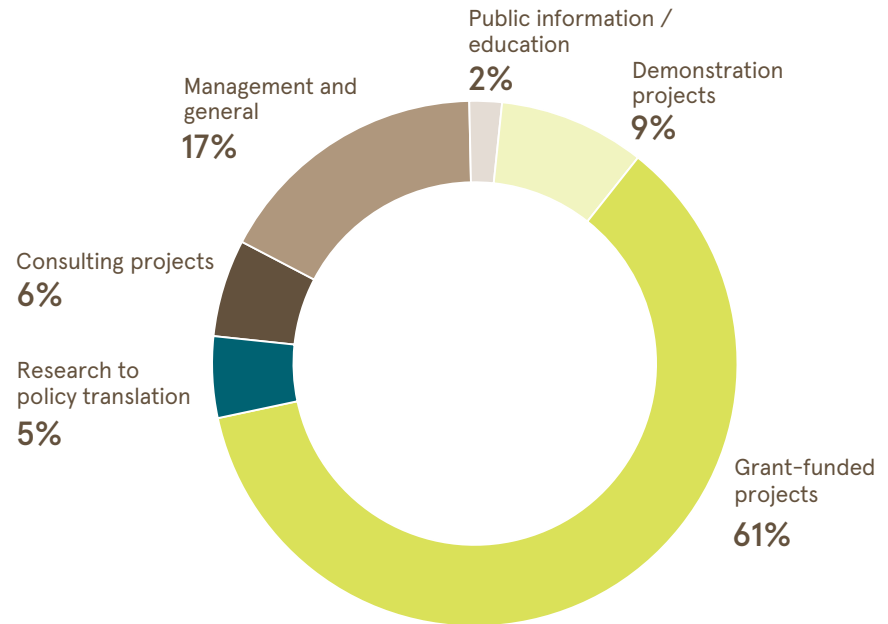
LIABILITIES AND NET ASSETS	
CURRENT LIABILITIES	
Accounts payable	\$25,378
Grants payable	\$183,662
Accrued liabilities and other	\$185,661
Deferred revenue	\$24,098
Refundable advance	\$175,109
Total liabilities	\$593,908
NET ASSETS	
Without donor restrictions	\$1,365,401
With donor restrictions	\$239,361
Total net assets	\$1,604,762
Total liabilities and net assets	\$2,198,670

Sources expenditures

12 months ended December 31, 2021 (audited)

Expenditures w pass through

EXPENDITURES





CHRT

CHRT.ORG

Center for Health and Research Transformation
4251 Plymouth Road
Arbor Lakes 1, Suite 2000
Ann Arbor, MI 48105-3640

Tel: 734-998-7555
Fax: 734-998-7557
CHRT-info@umich.edu

[@CHRTumich](https://twitter.com/CHRTumich)