



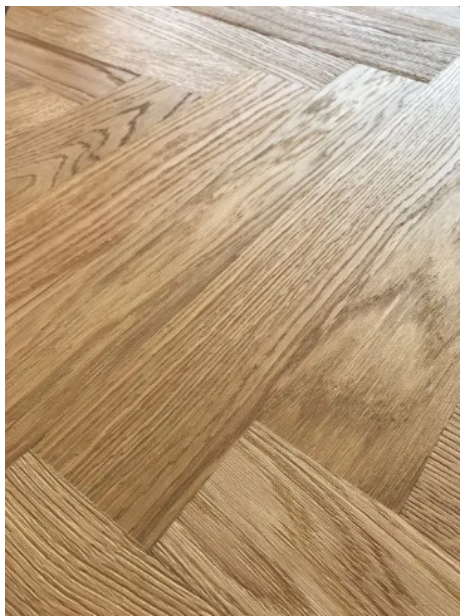
Bělehradská 29

by **PSN** 

STANDARDS

RESIDENTIAL UNIT

# Floors



## WOODEN FLOOR

floors in habitable rooms

Type: oak parquet

Installation: fully glued down

Surface finish: natural matte hardwax oil





# Interior doors



## INTERIOR DOORS GLAZED / SOLID PANEL

glazed doors to the main living area / solid doors to bedrooms, bathrooms, toilets, and storages

Type: wooden panel, panel door frame

Finish: white matte paint



## DOOR HANDLES

Cobra Orion - R

Type: round

Surface finish: matte nickel



Images are for informational purposes only



# Box-type windows



## WINDOWS / BALCONY DOORS

windows / balcony doors in habitable rooms

Type: timber box-type windows

Glazing: inner window single glazing, outer window double glazing

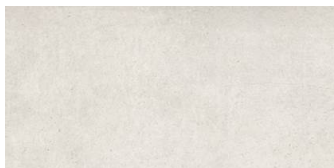
Surface finish: frame painted white

Fittings: Cobra Alt Wien, matte nickel





# Tiling



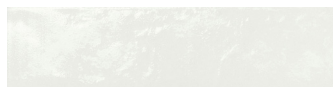
## CERAMIC TILING

wall surfaces in bathrooms and toilets

Type: Archceram Concrete

Dimensions: 120 x 60 cm

Color: Beige



## CERAMIC TILING

wall surfaces in bathrooms and toilets

Type: Marca Corona Regoli

Dimensions: 7,5 x 30 cm

Color: Bianco Glossy



## CERAMIC TILING

floors in bathrooms, toilets and hallways

Type: Archceram Concrete

Dimensions: 60 x 60 cm

Color: Beige



# Sanitary fittings



## BASIN IN BATHROOM

with tap hole and overflow

Brand: Laufen Pro S

Dimensions: 60 x 46,5 cm

Finish: white ceramic, glossy, polished underside edge



## SINGLE LEVER BASIN MIXER

without drain

Brand: Grohe Essence New

Finish: chrome





# Sanitary fittings



## WALL-HUNG TOILET

including slim seat with soft close lid

Brand: Laufen Pro

Finish: white ceramic



## FLUSH BUTTON

dual flush mechanism for large and small flush

Brand: Geberit

Finish: chrome



# Sanitary fittings

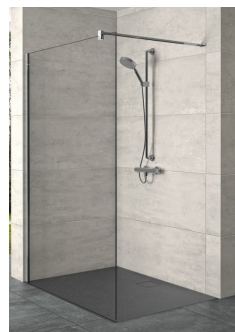


## SHOWER HEAD

on arm

Brand: Grohe Rainshower Mono 310

Finish: chrome



## WALK-IN SHOWER

Brand: Hüppe Design Walk-In

Finish: glass, chrome



## SHOWER MIXER

shower mixer and hand shower

Brand: Grohe Essence New

Finish: chrome



## SHOWER DRAIN

wall mounted installation

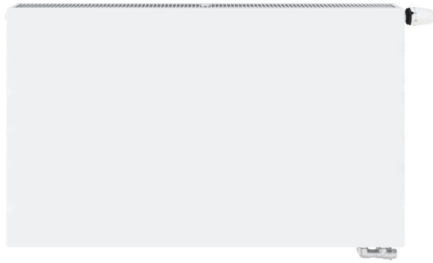
Brand: Alcadrain Professional Low

Finish: with grate for tile insertion, stainless steel





# Heating radiators



## RADIATORS

under windows in habitable rooms

Type: Radik Plan VK

Finish: white paint



## LADDER RADIATOR

bathrooms

Type: P.M.H. Rosendal

Finish: chrome



# Electrical components



## SOCKETS AND SWITCHES

multi gang sockets  
Type: JUNG, řada LS990  
Finish: white paint



## THERMOSTATS

located on the wall in main living areas  
Type: according to boiler Baxi / Protherm  
Finish: white







**[www.belehradaska29.cz](http://www.belehradaska29.cz)**

## Description

## Material / Type / Finish

## Condition

## CONSTRUCTION SYSTEM

vertical load-bearing structures – monolithic	x	x
vertical load-bearing structures – brick	brick	original
non-load-bearing vertical structures – partitions	brick / plasterboard	original / new
ceiling structures	brick vaults / timber beam ceilings	original
roof	timber truss, insulation, clay roof tile	new

## FACADE

street facade	new paint	new
courtyard facade	new paint	new

## EXTERIOIR OPENINGS

windows	replicas of original, timber box-type windows, outer window double glazed	new
door assemblies on landings	replicas of original, refurbished existing glass panels	new
entrance door to the house with window above	replica of original, refurbished existing glass panels, chip entry system	new
entrance door to the courtyard	replica of the original, wooden glazed door	new

## INTERIOR OPENINGS

entrance door to cellar, technical rooms	wooden, varnished	new
cellar cubicles	Troax steel system	new

## ELEVATOR

elevator	external, on landing, glazed shaft	new
----------	------------------------------------	-----

## ENTRANCE AREA - GROUND FLOOR

entrance hall with staircase – floor	tiling	new
entrance hall with staircase – walls	white paint	new
equipment	mailboxes and notice board	new



## Description

## Material / Type / Finish

## Condition

## STAIRCASE AND HOUSE CORRIDORS

main staircase	refurbishment of original	refurbished
landings – floor	tiling	new
common areas – walls	white paint	new
railings	steel railings with wooden handrail	refurbished

## COURTYARD

surfaces	outdoor tiling	new
greenery	x	x
equipment	bins	new

## WATER SUPPLY

cold water vertical pipes	risers	new
cold water horizontal pipes	main distribution	new

## SEWERAGE

sewerage vertical pipes	risers	new
sewerage horizontal pipes	main distribution	new

## GAS

gas vertical pipes	risers	new
gas horizontal pipes	main distribution	new

## ELECTRICAL INSTALATION

power distribution	main lines, electric meter switchboard	new
TV distribution	main lines	new
data distribution	main lines	new
door phone distribution	main lines	new

## MEASUREMENT OF COMMON ENERGY CONSUMPTION

drinking water	water meter – 2nd basement	new
electricity	electric meter – 1st basement	new