

GROW YOUR IMAGES

NEWTON 7.0 BIO

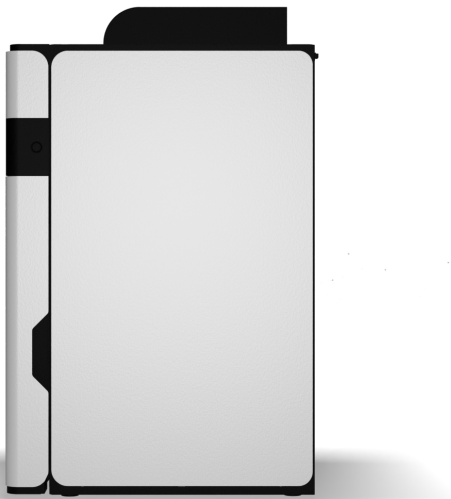
BIOLUMINESCENCE & FLUORESCENCE
FOR PLANT IMAGING



VILBER
MORE THAN IMAGES

ABSOLUTE DESIGN

"AN INSTINCT FOR TRUTH" - LOUIS PASTEUR



ABSOLUTE QUANTIFICATION

Absolute quantification allows researchers to compare and integrate data from different days, studies or laboratories. Unlike relative quantification, which compares the amount of an analyte between two or more samples, absolute quantification provides a precise value for the amount of substance in the sample, expressed in absolute units, such as radiance (photons/s/cm²/sr).

NIST TRACEABLE CALIBRATION

Absolute NIST Traceable Calibration Imaging is based on traceable references provided by the National Institute of Standards and Technology (NIST). It allows precise quantification of specific biomolecules (such as proteins) in the sample of interest and provides benefits such as accuracy, reproducibility, and standardization.

DETECTION CAPABILITIES

Luciferase expression - Green fluorescent protein (GFP)
red-shifted GFP expression - Chlorophyll phosphorescence - NIR illumination

SAMPLE CHOICES

Small plants - Fruits - Vegetables - Leaves - Cyanobacteria - Green algae - Seedlings - Insects - Blossoms - Roots - Mosses - Lichens - Fungi - Cell and tissue cultures

INCREDIBLY EASY TO USE

Unlimited number of users of the software - Intuitive user interface - One click to get the image - Auto-exposure and automatic illumination control - Adjustable stage

QUALITY ONLY

Very robust design for long-term durability - Made of aluminium and stainless steel (no plastic) - Elegant, modern and compact design to fit your work environment

DETECT AND DECODE

WE KNOW WHAT THESE IMAGES MEAN TO YOU

The NEWTON 7.0 BIO is a smart optical imaging system used world-wide. It is dedicated to bioluminescence and fluorescence detection for plants and other *in vivo* / *in vitro* biological samples. Thanks to its unrivalled precision optics (ultra-low noise CCD camera and f/0.70 lens aperture) and its wide spectral range detection (400 - 900nm), the system allows you to cover all your applications. From visualizing infections in plants (like *Arabidopsis thaliana*) leaves and seedlings, to comparing plant virology, plant growth or plant stress tolerance, researchers will be able to benefit from an innovative and user-friendly interface to observe the lowest signal intensities in a live 3D sample reconstruction. In the end, the NEWTON 7.0 BIO is an instrument that is specifically made for absolute quantification and offers you the perfect mix between high sensitivity and deep analysis capabilities.

UNRIVALLED SENSITIVITY AND SHARPNESS

The NEWTON 7.0 BIO proprietary optics have been specifically developed for macro imaging with the highest light collection capacity, incorporating a unique combination of wide aperture and long working distance. Our system is equipped with a high-resolution scientific CCD camera which means better performance in pattern recognition. Bright fluorescence observation can be performed in a rapid scanning mode that shortens exposure times and minimizes specimen damage.



MULTISPECTRAL AND FLUORESCENCE IMAGING

Our dual magnetron filter technology ensures transmission above 90% and very narrow band cutting. The time to get the image is drastically reduced and sensitivity is increased. Our system accommodates 8 excitation channels in the visible RGB and IR spectrum (from 400 to 900nm). Signals can be overlaid so that several reporters can be visualized simultaneously. The very tight LED spectrum is constrained with a narrow excitation filter. This means less background in the images (ultra-low noise imaging) of your sample and a higher signal to noise ratio to detect the weakest signals.



BEST CAMERA PERFORMANCE

The NEWTON 7.0 BIO is equipped with a high-sensitivity scientific CCD camera with a proprietary lens offering the widest aperture in the industry (f/0.70) as well as a deep camera cooling down to -90°C to ensure the best signal to noise ratio (which is ideal for faint luminescence applications). With up to 4.6 image resolution, obtain sharp details from your samples.



HEIGHT ADJUSTABLE PLANT STAGE

Enjoy a 20x20 FOV to visualize large plants! The rotating stage is motorized on the Z axis to get closer to the CCD camera. It can rotate by 15° on the X/Y axis and easily controlled from the software, avoiding time consuming manipulation.

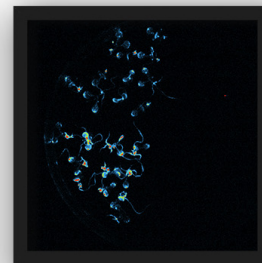
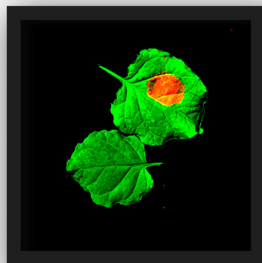
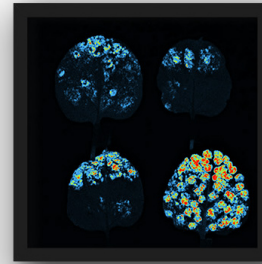
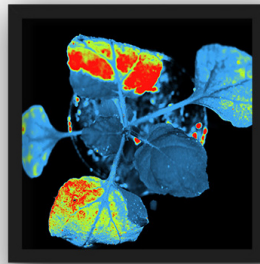
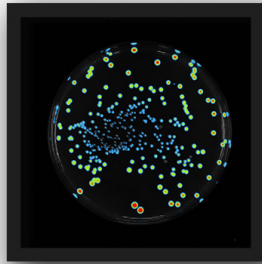
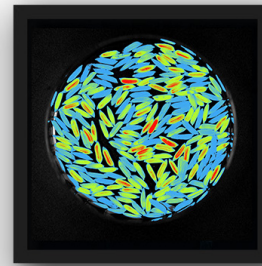
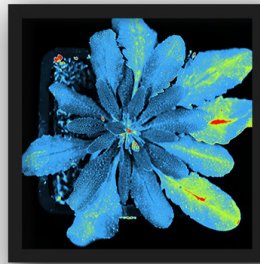
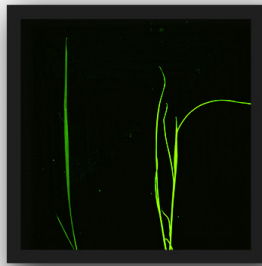


BIOPHOTON EMISSION

Monitor cellular activity in living organisms such as plant stress, non-invasively and in real time by detecting and visualizing the light they emit.

ALL THE APPLICATIONS YOU NEED IN ONE SYSTEM

Visualize comparative plant virology, genetic regulation, circadian rhythms, stress tolerance, regulation of plant growth and monitor infection (viral, bacterial etc).



LUCIFERASE & GFP EXPRESSION

Investigate the behavior and interactions of specific proteins in real-time and in their native environment thanks to GFP expression. Track gene expression, understand plant physiology, characterize and distinguish between various microbial infections or cloned plant screening using luciferase.

DELAYED FLUORESCENCE

Measure the time delay between light absorption and re-emission to study the photosynthetic activity and health of plants. Reveal the presence of hidden stresses that are not detectable by traditional methods, which is very useful for crop management and plant breeding.

CHLOROPHYLL FLUORESCENCE

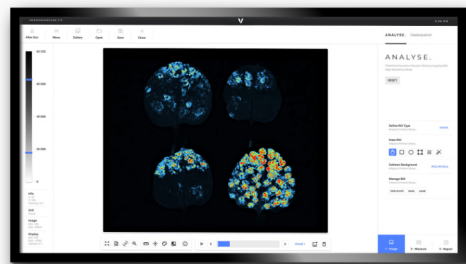
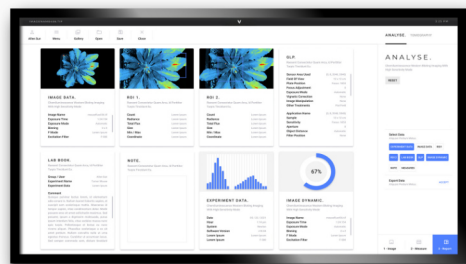
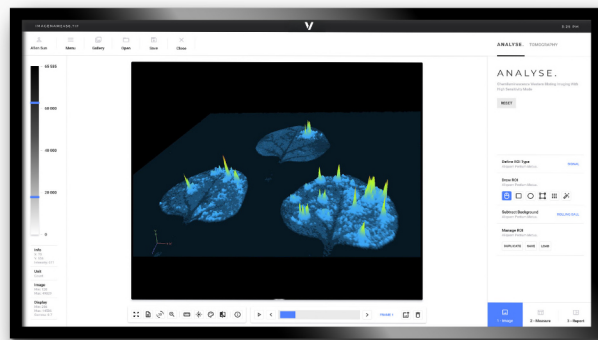
Capture the fluorescence emitted by chlorophyll molecules within leaves to assess the photosynthetic efficiency and stress level within plants. Get critical insights into the impacts of environmental stresses on plant health and productivity and address global food security challenges.

WHAT SMART MEANS

GET YOUR IMAGES IN ONE CLICK

Make publication-ready scientific images with simplicity for an unlimited number of users. Benefit from our 3D Dynamic Scan technology and observe the different signal intensities in a live 3D video reconstruction which will help you to detect signal concentration. The unique color imaging mode helps you acquire a quick snapshot of your plants with a true color representation, making documentation faster! Our system's protocol driven image acquisition is as quick as it is intuitive: adjust your exposure, save, print and quantify. Various imaging modes are available from automatic, manual, or time-lapse imaging program. Time series could be constructed from images acquired on different days. You can also monitor the growth of a plant overtime thanks to the daylight and nightlight simulation modes through the software.

Finally, easily select leaves of interest with just one click.



SPECIFICATIONS

PERFORMANCE

Bioluminescence detection: picogram level
Fluorescence detection

ILLUMINATION

Dual white-light LED panels
8 excitation channels:
440nm - 480nm - 540nm - 580nm
640nm - 680nm - 740nm - 780nm
11-position motorized filter wheel
8 narrow bandpass emission filters:
500nm - 550nm - 600nm - 650nm
700nm - 750nm - 800nm - 850nm

SOFTWARE

Automatic, manual & serial acquisition modes
3D live dynamic scan
Image editing and image analysis including
bioluminescence and fluorescence on whole
plants to seedlings.

CAMERA & OPTICS

Scientific grade 16-bit CCD camera
Grade 0, 400-900nm / 4.8 O.D.
-90°C Cooling
f/0.70 motorized lens aperture
Resolution: 2160x2160 pixels
Peak quantum efficiency: 80%
FOV minimum: 6x6cm (macro imaging)
FOV maximum: 20x20cm

HARDWARE CAPABILITIES

Intelligent darkroom concept
Fully-automatic system
• Motorized optical lens
• Z-axis motorized camera
• $\pm 15^\circ$ tilting sample stage

COMPATIBLE DYES & STAINS

CFP, GFP, YFP, RFP, FITC, DAPI, Alexa Fluor®
680, 700, 750, Cy® 2, 3, 5, 5.5, DyeLight,
IRDye® 680, 800CW

CONTACT US FOR A DEMO

INFO@VILBER.COM

We are proud to be a leading life science company which designs and manufactures state of the art imaging systems for all your fluorescence, chemiluminescence and bioluminescence applications. Our commitment is to accelerate your research via a highly reliable and simplified imaging process.

We are constantly innovating to offer you the best performance in terms of optical sensitivity and analysis. Our technologies incorporate the latest developments in user interface and product design, as well as photonic innovations. Today, our engineering company has made its way into the imaging sector: over 60,000 users worldwide, including several Nobel Prize winners, rely on our imagers.

VILBER
MORE THAN IMAGES