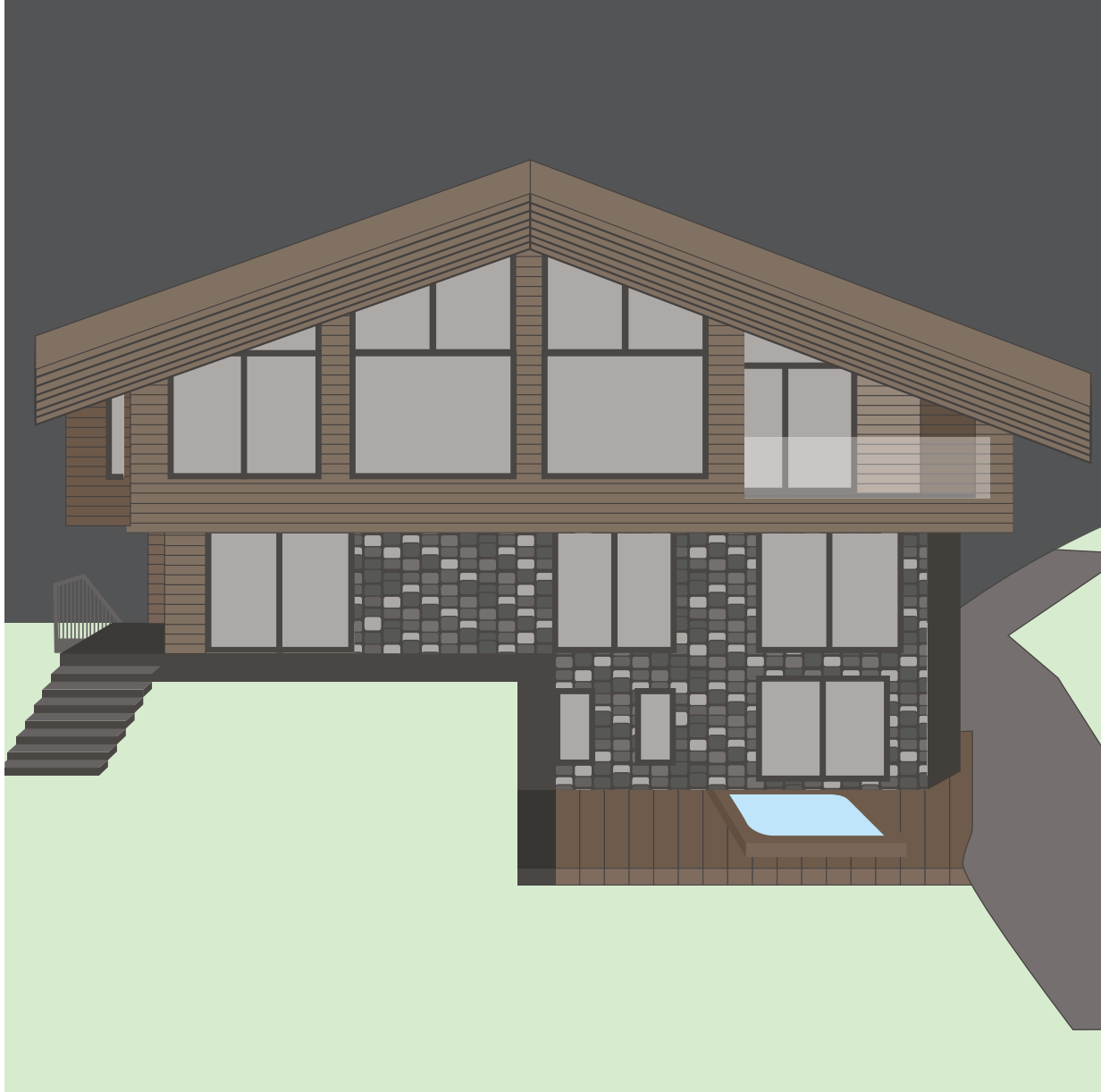


# CHALET TUFTRA FINDELBACH



## ACCOMMODATION

MAXIMUM GUESTS: 16 (+5) **plus 4 not 5**

BEDROOMS: 5 double/twin en suite

STAFF **4 plus ZSC concierge services**

INTERNAL ELEVATOR

SKI-IN AND SKI-OUT

**Matterhorn views Living Area: 800m2**

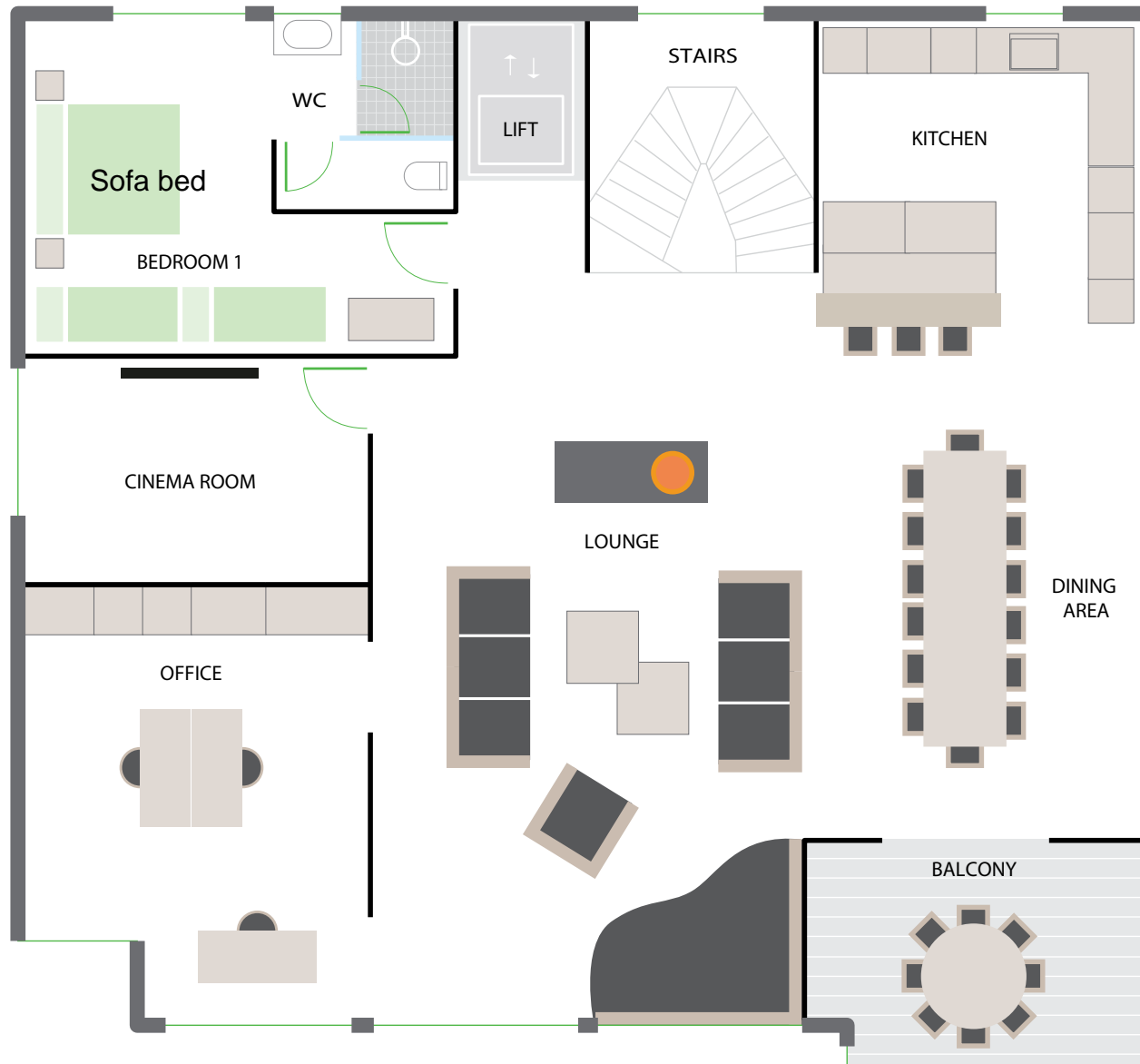
Five star Chalet Tuftra Findelbach sleeps up to 16 (+5) in 5 double/twin en suite bedrooms, one quad room, and one triple rooms (there is an additional lounge that can be made as a double bed) with a lovely wellness consisting of a steam room, sauna, Onsen and outdoor hot-tub.

Chalet Tuftra Findelbach was completed in March 2020 and is one of Zermatt's leading luxury chalets. It was built to maximise a feeling of space and a connectivity to the mountains and wilderness with every room having fantastic views and the stairwell is a light atrium filling the chalet with ambience and sunlight.

Chalet Tuftra Findelbach is located in Zermatt's only ski-in ski-out district, Winkelmatten. This is known as the "Beverly Hills" of Zermatt and has some fantastic restaurants and bars, children's play areas and shops. From the chalet you can ski through the meadow and down to the Klein Matterhorn Express and you can ski back to the door of the chalet down the Moosweg ski-run. In the morning you can take the ski-bus from outside the door to the ski lift or walk 100 metres and ski down through the meadow to the ski-lift.

Chalet Tuftra Findelbach is a beautiful free-standing chalet and is unique in Zermatt in that it is the only free-standing chalet that can cater for groups of up to twenty guests. It has an outdoor Jacuzzi, a steam room, sauna, massage room and an Onsen. Adjacent to the wellness area in the lower ground floor is a gym with a wide range of fitness machines and free weights.

# CHALET TUFTRA FINDELBACH



## UPPER FLOOR

The dining area is located on the upper floor and the solid oak dining table can accommodate 20 comfortably. There is also comfortable lounge and open 360 degree Swiss fire cube where you can relax after an unforgettable day on the slopes with a glass of wine or a hot chocolate. The lounge has stunning views of the Matterhorn.

The chalet has and wireless internet throughout. There is a fully fitted kitchen where our hand-picked team will work to create fabulous cuisine throughout your stay.

Located off the lounge is a lovely office area where you can catch up with work if required and also a cinema room with TV, DVD, Playstation.

There is also a kids bunk-room located on the upper floor so the younger members of your party can retire for the evening but still not be too far away.



# CHALET TUFTRA FINDELBACH



## GROUND FLOOR

The ground floor of Chalet Tuftra Findelbach comprises of two large en suite double bedrooms, one with Matterhorn views and the other with views down over the burbling brook.

There is also a lounge which can be made up as a double bedroom if you have a larger party or can be utilised as a separate lounge area.

There are two other double bedrooms that share a bathroom with double showers, one with free-standing bath with Matterhorn views and a the other with views down over the burbling brook. There is also a guest bathroom with shower and WC on this floor.

**Bedroom 2:** Double/twin bedroom with en suite shower room with sink and WC. Views of the river.

**Bedroom 3:** Double/twin bedroom with en suite shower room with WC and sink. Matterhorn views

**Bedroom 4:** Floating super kingsize bed or can be made as an Austrian twin (two mattresses in one bed-frame). Free-standing bath tub and stunning Matterhorn views. The en suite bathroom is shared with bedroom 5 and has twin showers, twins sinks and a WC.

**Bedroom 5:** Double/twin en suite bedroom with a view of the stream. En suite shower room shared with bedroom 4.

**Bedroom 8:** Double sofa bed if required with private shower room with shower, sink and WC.

# CHALET TUFTRA FINDELBACH



## LOWER GROUND FLOOR

The lower ground floor of Chalet Tuftra Findelbach has a double en suite studio with a view to the stream and a double/twin bedroom which as a third bed over it which can be utilised for a couple or up to three guests. There is an ensuite shower room with WC.

There is also a fully fitted gym and a wellness area with steam room, sauna, Onsen and outdoor hot-tub all of which have Matterhorn views.

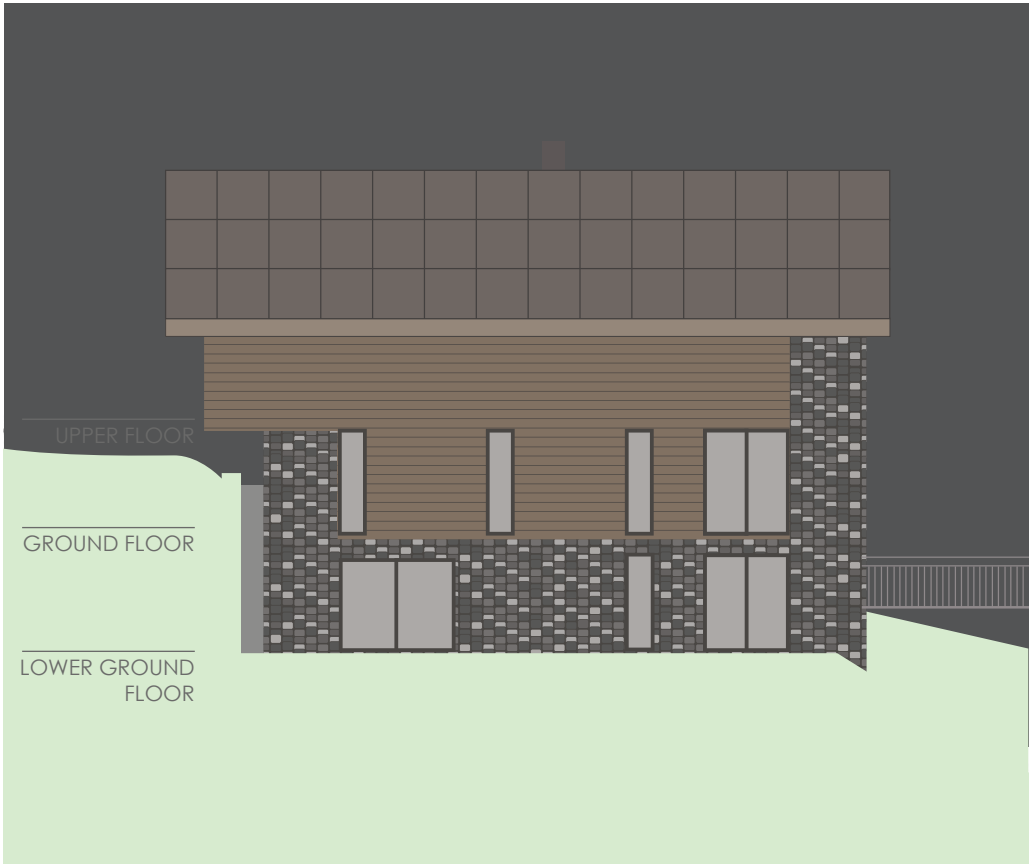
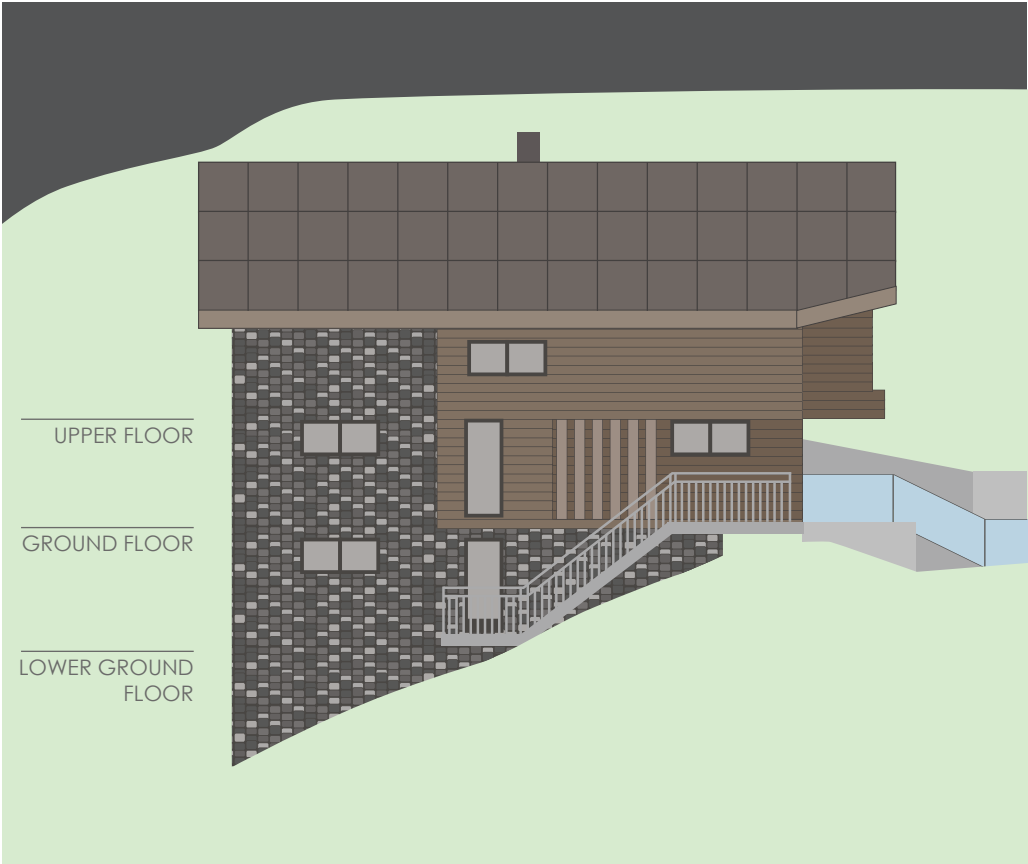
There is a lift in the chalet making it suitable for less able bodied guests. Our chefs and chalet staff are on hand to provide you with a chilled glass of champagne in the Jacuzzi, organise your massage and prepare breakfast, afternoon tea and a six course gourmet evening meal.

There is a ski and boot-room with heated boot racks at the chalet.

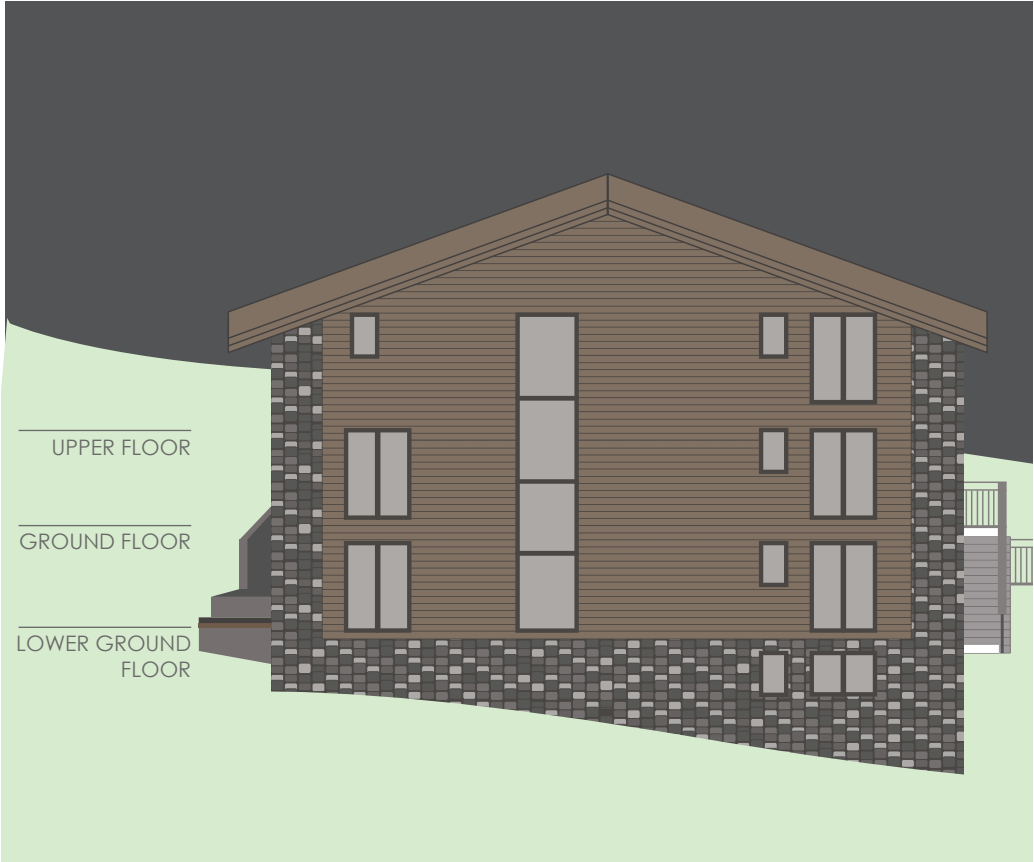
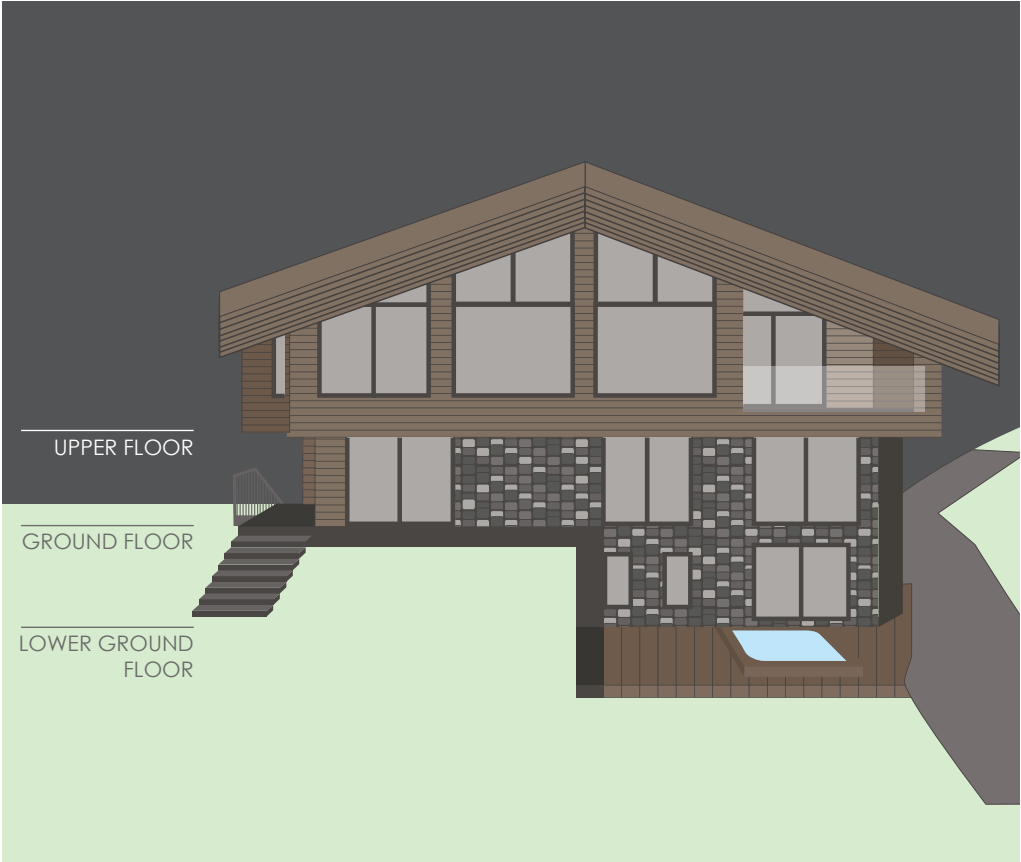
The village centre is 4 minutes in an electro car or a 15 minute walk.

**Bedroom 6:** Double/twin bedroom with en suite shower room with sink and WC. Views of the stream.  
**Bedroom 7:** Double/Austrian twin bedroom with en suite shower room with sink and WC. Stream views.

# CHALET TUFTRA FINDELBACH



# CHALET TUFTRA FINDELBACH



# CHALET TUFTRA FINDELBACH

