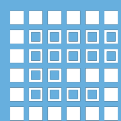


A surveyor wearing a blue cap, a high-visibility yellow vest, and light-colored pants is operating a surveying instrument on a residential street. The background shows houses and a clear blue sky. The image is overlaid with several semi-transparent blue rectangular shapes.

LAND SURVEYING STATEMENT OF QUALIFICATIONS



GUIDA


**SUBSURFACE
UTILITY ENGINEERING
(S.U.E.) SERVICES**

CORPORATE INFORMATION

GUIDA is a small business land surveying firm that has provided project-based and on-call geospatial services throughout California since 1995. GUIDA employs highly skilled and professional land surveyors, field crews, and office personnel. By offering a depth of staffing resources, we provide flexibility to accommodate working off hours, variable days, and locations. Surveying has long held an important place in the GUIDA family and we are fully invested in being trusted advisors to our teaming partners. Our goal is to provide well-managed and well-delivered projects.

TECHNOLOGY FOCUS GUIDA utilizes a blend of traditional methods with new and innovative technologies for the creation and delivery of the best and most accurate work products possible to our clients. We constantly look for ways to utilize new equipment and software to efficiently solve complex survey challenges.

90+ EMPLOYEES



SBE CERTIFIED BUSINESS

GUIDA is proud of our certifications and is thankful for the opportunity to contribute to our clients' diversity goals and committed to partnering with other small and disadvantaged businesses whenever possible.



DIVERSE EXPERTISE GUIDA provides the following services to public and private clients across California on transportation, transit, water, land development, educational and commercial facilities, high rise buildings, public utility and renewable energy projects.

LAND SURVEYING SERVICES

- DESIGN SURVEYS
- BOUNDARY SURVEYS
- RECORDS OF SURVEY
- CORNER RECORDS
- GEODETIC CONTROL SURVEYS
- RIGHT OF WAY ENGINEERING
- MONUMENT PRESERVATION/PERPETUATION
- MAP CHECKING
- SUBDIVISION MAPPING
- CONSTRUCTION SURVEYS
- GIS SERVICES

LiDAR SERVICES

- TERRESTRIAL
- MOBILE
- UNMANNED AERIAL
- TRANSPORTATION
- INFRASTRUCTURE
- ARCHITECTURAL
- INDUSTRIAL
- 3D MODELING

UTILITY SURVEYING SERVICES

- UTILITY RESEARCH
- UTILITY MAPPING
- UTILITY SURVEYS
- MARK AND LOCATE (GPR, ELECTROMAGNETIC)
- POTHOLE COORDINATION
- AS-BUILTS SURVEYS
- NULCA CERTIFIED STAFF

UAV SERVICES

- FAA CERTIFIED PILOTS
- PHOTOGRAPHY & VIDEO ACQUISITION
- DIGITAL ORTHOPHOTOS
- INSPECTION

SPECIALTY SERVICES

- TUNNEL CONTROL
- TUNNEL CONSTRUCTION
- CAVITY AND SINKHOLE DETECTION
- SINGLE BEAM SONAR BATHYMETRY

GUIDA's team owns and utilizes the latest in survey technology and understands how to properly integrate this technology into our workflows for more robust work products. This ability to blend traditional survey methods with new and innovative technologies has always been a part of what makes GUIDA unique.

✓ **TERRESTRIAL LIDAR SERVICES**

Terrestrial LiDAR is a method for collecting accurate topographic survey data. It is often utilized in combination with other methods to provide assistance when there are safety concerns or areas are difficult to access. GUIDA employs various Trimble scanning systems to capture terrestrial LiDAR data into our project workflows.

✓ **MOBILE LIDAR SERVICES**

GUIDA's new Dual Snoopy CL-360 is an industry- leading, state-of-the-art mobile LiDAR mapping solution that provides powerful survey grade data. The payload includes two Optech CL360XR LiDAR sensors, GPS sensor, a tactical grade inertial measurement unit (IMU) and FLIR Ladybug 5+ 360° camera system. Mobile LiDAR captures large areas in a very short time and increases safety by removing personnel from hazardous conditions such as interstates, roadways, bridges, and tunnels.

✓ **UNMANNED AERIAL SYSTEMS (UAS) MAPPING**

GUIDA provides mapping and terrain modeling utilizing our in-house UAVs. GUIDA utilizes several types of systems, from our imagery only small scale systems to our newest heavy lift hexacopter and the ability to carry an Optech CL360XR LiDAR sensor and two Sony a6000 series cameras (RBG and NDVI). These systems allow us to capture imagery and terrain data for all types of projects from planning to design and construction.

✓ **GEOGRAPHIC INFORMATION SYSTEMS (GIS)**

GIS is a great tool to assist in managing property data and monitoring changes from past to present. GUIDA utilizes GIS solutions to manage datasets and create exhibit mapping.

✓ **SUBSURFACE UTILITY ENGINEERING (SUE)**

Our team utilizes ASCE's SUE Guideline 38-22 to define utility locations by Quality Levels A-D. ASCE SUE Guideline 38-22 defines four areas of utility mapping consisting of record utility mapping (QL-D), utility field surveys (QL-C), utility detection (QL-B) and potholing (QL-A). All utility information obtained will be added to a utility base map and labeled with the appropriate Quality Level (A-D) to identify the positional accuracy and confidence level for each utility. Through thorough records research, accurate surveying, utility detection that follows state of the art practices, and a pothole subconsultant that is in alignment with ASCE Standard 38, GUIDA can provide a utility base map that diminishes preventable utility strikes.

- TRIMBLE S7 TOTAL STATIONS
- TRIMBLE GNSS RECEIVERS
- TSC7 DATA COLLECTORS
- TRIMBLE SX-10 SPATIAL TOTAL STATIONS
- DJI PHANTOM 4 PRO RTK AND AUTEL UAS
- DUAL SNOOPY CL-360 MOBILE LIDAR SYSTEM
- IF1200A HEAVY LIFT HEXACOPTER UAV
- SOKKIA 1" AUTOMATED GYRO X II STATION
- SEAFLOOR HYDRONE AND HYDROLITE PLUS DUAL FREQUENCY ECHOSOUNDER



COMMITTED LEADERSHIP AND STAFF

GUIDA believes it is important to hire and retain thoughtful, talented, and creative team members. Our staff is comprised of surveyors who have been with us since our inception as well as an infusion of new talented, experienced survey leaders. Our team has extensive experience providing a full suite of land surveying and mapping services, delivering quality and innovative products on time and within budget.



Tom Pilarski, PLS
S.U.E. Specialist

E: tpilarski@guidainc.com | T: 949.777.2074

Tom has over 29 years of experience in the surveying industry, specializing in right of way engineering, utility mapping, and large-scale infrastructure projects. He has expertise in the development of survey programs that support large right of way acquisition and subsurface utility engineering (S.U.E.) projects and has spent a large portion of his career working in client offices to provide program management, project management, and staff augmentation services. As lead of GUIDA's S.U.E. services, Tom provides oversight and quality control for our ASCE Standard 38 Subsurface Utility services on projects.

E: lspivak@guidainc.com | T: 949.777.2010

Lisa brings both strong technical and organizational expertise. With over 35 years of experience, Lisa's management experience coupled with her vast technical knowledge of land surveying and mapping for design, right of way, and construction projects makes her an asset on any project. She has provided contract management, project management, and oversight on dozens of large, statewide, and/or agency projects. Lisa serves as GUIDA's Executive Vice President of Operations.

Lisa Spivak, PLS
Principal, Project Manager



Tim Fettig, PLS
Principal, Project Manager

E: tfettig@guidainc.com | T: 949.777.2023

Tim brings over 37 years of experience, and has a complete technical understanding of all aspects of land surveying and mapping for design, right of way, and construction projects. He engages in both field and office support, when required, and is knowledgeable about the latest equipment, technology, and product development. Highly skilled in all aspects of both design and construction surveying, Tim is responsible for oversight of staff members, workload, and scheduling. Tim is one of GUIDA's founding members.

E: dsunderman@guidainc.com | T: 925.398.2535

Dustin is a Licensed Land Surveyor with more than 10 years of experience working on design and construction projects throughout Northern California. Dustin has experience coordinating and overseeing topographic surveys, engineering design surveys, dam monitoring, subsidence monitoring, benchmark maintenance, as-built surveys, boundary surveys, and legal descriptions.

Dustin Sunderman, PLS
Project Manager



RECENT AND RELEVANT PROJECT EXPERIENCE

GUIDA's team members have worked on hundreds of projects with public and private agencies across California to provide highly technical land surveying, mapping, S.U.E., and geospatial services on some of the state's most significant infrastructure projects. Our qualified team, local experience, and commitment to client projects makes GUIDA a perfect fit to support on utility locating projects.



SOUTHERN CALIFORNIA EDISON (SCE), REAL PROPERTIES GEOMATICS & PROPERTY SERVICES

On-Call Land Surveying Services (MSA# CW2243649) | SCE Service Territory, CA

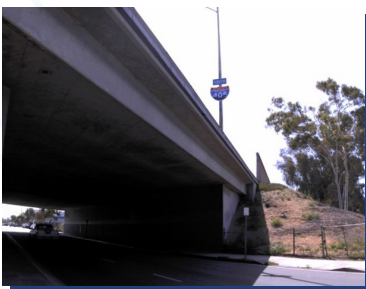
Since 2019, GUIDA has provided on-call land surveying, S.U.E., and mapping services for SCE's projects throughout the SCE service territory. Recently, GUIDA has completed several utility detection surveys for the Brewster, Oak Grove, and Marymount Substations, which included the use of multiple utility detection equipment to detect and mark multiple utilities that were known and unknown to SCE staff. All work under this MSA is being performed in accordance with SCE Survey and Mapping Standards. Work orders received to date have been completed on time and within budget as agreed upon by SCE.



DEPARTMENT OF WATER RESOURCES (DWR)

On-Call Land Surveying Services | Statewide, CA

Since 2021, GUIDA has provided statewide on-call land surveying services to DWR on projects associated with hydroelectric pumping and generation plants; large diameter pipelines; dams; reservoirs; water conveyance structures and buildings; flood protection facilities; aqueducts; levees; roads; and bridges. GUIDA successfully completed over 25 task orders throughout California, which cover a multitude of services such as: boundary surveying; legal description and exhibit preparation; topographic surveying; land rights research; aerial / UAV imagery and LiDAR surveys; construction surveying; utility research, utility mark and locate surveys, and mapping.



LOS ANGELES METROPOLITAN TRANSPORTATION AUTHORITY (METRO)

I-405 Auxiliary Lane (PS&E) | Los Angeles, CA

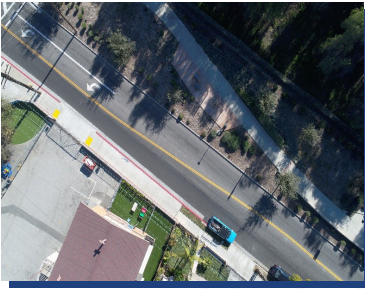
Metro, in cooperation with Caltrans and the South Bay Cities Council of Governments, is constructing a series of auxiliary lanes on both northbound/southbound I-405 from Artesia Boulevard to the I-405/1-105 separation, in the cities of Torrance, Hawthorne, Redondo Beach, Lawndale, El Segundo, and Manhattan Beach, in Los Angeles County. As a member of the design engineering team, GUIDA provided control surveys, topographic surveys and right of way engineering services for a 2.5-mile segment of I-405. The survey services included control surveys, topographic surveys, mobile LiDAR, bridge and wall surveys, survey and utility mark and locate support for utility potholes and geotechnical bore holes, and right of way engineering and mapping.



LOS ANGELES WORLD AIRPORTS (LAWA)

Los Angeles International Airport (LAX) Northside Lulu's Place Project | Los Angeles, CA

As a subconsultant, GUIDA is providing land surveying and mapping services for the Los Angeles International Airport (LAX) Northside Lulu's Place Project. The project is part of a comprehensive plan for 340 acres of vacant property located between LAX and the Los Angeles communities of Westchester and Playa del Rey. The project will provide needed community resources and benefits, as well as important support sites for the LAX airport. The project improvements will include producing a sustainable center of employment, retail, restaurant, office, hotel, research and development, education, civic, airport support, recreation, and airport-buffer uses that support the needs of communities surrounding LAX. GUIDA's is providing aerial topography, utility mark and locate services, supplemental field survey, tract map boundary and easement documentation, and preparation of an ALTA map of the area.



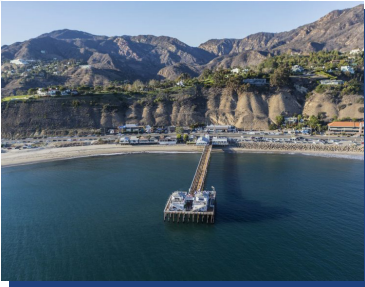
LOS ANGELES COUNTY SANITATION DISTRICTS (LACSD)
On-Call Land Surveying and Mapping Services | Los Angeles, CA

GUIDA is currently serving as an on-call land surveying services consultant in support of projects associated with sewer facilities throughout the Districts’ service area. The scope of services under this on-call contract includes control and topographic design surveys, aerial photogrammetric mapping and digital orthophotography, boundary and right of way surveys, legal descriptions and plats, utility research, utility mark and locate surveys, construction surveys, and as-built mapping. GUIDA is providing as-needed land surveying and mapping services on various task order projects including trunk sewer and manhole rehabilitation and construction project.



NAVAL FACILITIES ENGINEERING SYSTEMS COMMAND (NAVFAC)
NBPL Miramar Fuel Pipeline and Relocation Project | San Diego, CA

This U.S. Navy project focused on the construction and realignment of up to 3,400 feet of buried pipeline to address two major encroachments within the Navy easement at High Tech High School and the Cannington Drive area. The existing pipeline between Naval Base Point Loma and Marine Corps Air Station Miramar will remain in service and maintained in safe operational condition for unencumbered access to the pipeline for regular inspection, routine maintenance, and emergency response while the new pipeline is being constructed. Once the new pipe segments are operational, the existing segments that are no longer needed will be cleaned and closed in place. As a subconsultant to the design engineering team, GUIDA provided project control, utility mark and locate services, right of way mapping, aerial mapping, and topographic mapping for the project.



COUNTY OF LOS ANGELES DEPARTMENT OF PUBLIC WORKS (LADPW)
On-Call Mapping and Survey Services (Contract #PW-15587) | Los Angeles County, CA

As a prime consultant, GUIDA is contracted to provide on-call mapping and surveying services for the construction, repair, and demolition of capital projects throughout Los Angeles County. GUIDA’s scope of services under this contract may include, but are not limited to, topographic surveying and mapping, boundary mapping, utilities, ALTA surveys, locating infrastructure items (i.e. meters, backflow preventers, valve boxes, etc.), providing elevations, utilizing GIS to create data for spatial features, performing high-definition 3D Laser Scanning, providing aerial survey services, generating as-built plans, title surveying services, and subsurface utility mark and locate services.



COACHELLA VALLEY WATER DISTRICT (CVWD)
Lift Station 55-11 Capacity Upgrade | Coachella, CA

The purpose of this project was to add capacity to lift station 55-11 as current peak hour flows were nearing the total pumping capacity of the lift station. In addition, the new lift station replaced aging/failing infrastructure by constructing new pumps, odor control, electrical building, frontage improvements and emergency standby electrical power, while addressing automation, redundancy, SCADA control, flow equalization, capacity, and efficiency. GUIDA’s services on this project included, but were not limited to, providing aerial topography, establishing field control, topographic base mapping, utility mark and locate services, and plot record right of way.



LPA DESIGN STUDIO (LPA)
On-Call Surveying Services for Educational Facilities | Various Locations, CA

For over a decade, GUIDA has been providing land surveying and mapping services to various educational facilities through our prime design consultant, LPA. GUIDA has performed utility surveys including utility research and mark & locate services, control surveys, boundary surveys, topographic surveys, and aerial mapping.

VISIT WWW.GUIDAINC.COM FOR MORE INFORMATION ON GUIDA PROJECTS



CORPORATE HQ
220 COMMERCE, SUITE 150
IRVINE, CA 92602

WWW.GUIDAINC.COM
949.777.2000