

SATORI All-in-One Units

Filling Guide + Best Practices

VERSION 1.0

Before You Fill: Compatibility Testing

Send 5–10 mL of your oil for lab verification. We'll test oil compatibility with the Satori device, advise ideal fill temperature & suggested wattage, and help tune for your formulation.

Oil Viscosity Targets

At the time of injection, **your oil should reach a viscosity of 2,000–3,000 mPa·s**. Pre-heat only as needed to achieve this; excessive heat can thin oil and increase leakage risk.

Don't have a viscometer? Send 5–10 mL - we'll measure viscosity and provide the exact fill temperature for your formulation.

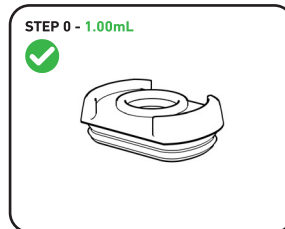
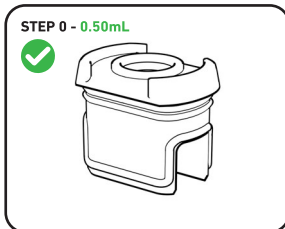
Filling

KEEP UNITS FULLY UPRIGHT (90°), IDEALLY IN THEIR FOAM TRAYS, AT EVERY STAGE (PRE-FILL, POST-FILL, PRE-CAP, POST-CAP).

STEP 0 – Select the Correct Silicone Sealing Plug (by fill volume)

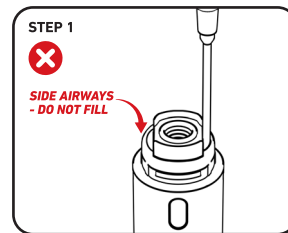
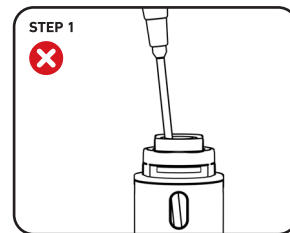
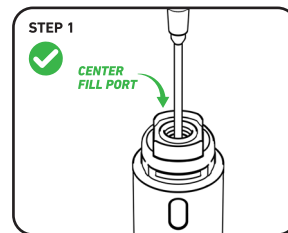
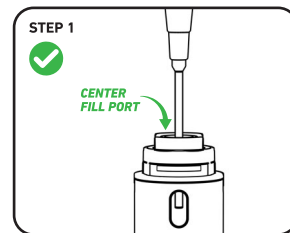
0.5 mL: Use the 0.5 mL silicone sealing plug (longer/larger to reduce oil-cup space to 0.5 mL). Dispense exactly 0.50 mL - overflow will overflow when capping.

1.0 mL: Use the 1.0 mL silicone sealing plug (takes up less space; designed for full 1.0 mL fills).



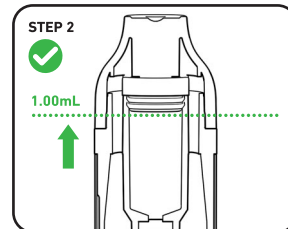
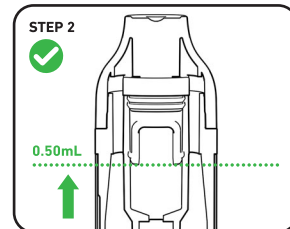
STEP 1 – Proper Needle Insertion

Insert the needle into the center hole of the silicone plug (fill port). Do not insert along the side walls - those are airways. Insert no deeper than 2/3 of tank depth.



STEP 2 – Fill to the Correct Level

Do not exceed the bottom of the silicone sealing plug.



Capping

STEP 3 – Setup (alignment & Jigs)

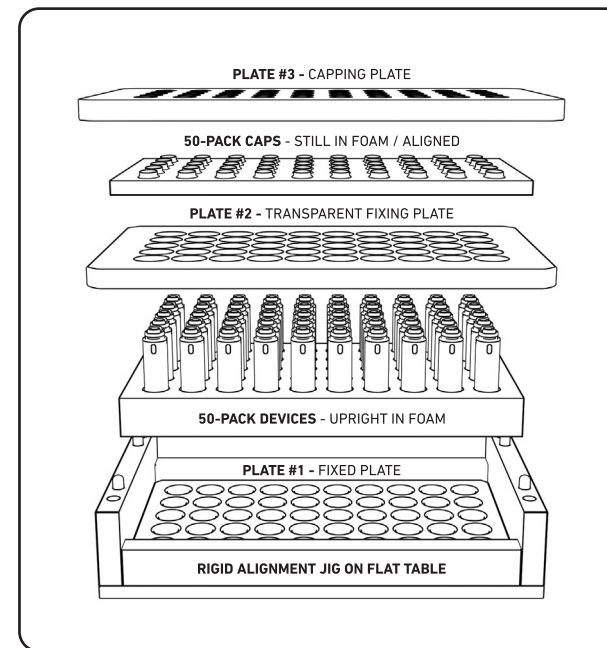
01.) Place the entire 50-pack (devices upright in foam) into the base of the rigid alignment jig.

02.) Place **Plate #1** - Fixed Plate over the 50 units.

03.) Place **Plate #2** - Transparent Fixing Plate over **Plate #1**.

04.) Place the entire 50-pack of caps (still in foam) on top of **Plate #2** in a perfectly aligned position. Align the device side windows to the cap windows on the same axis; verify all units are fully aligned.

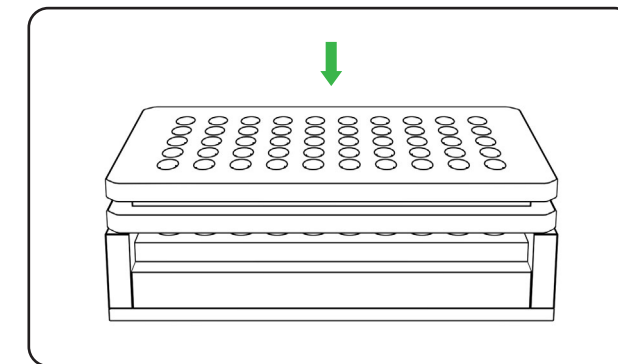
05.) Place **Plate #3** - Capping Plate over the caps.



STEP 4 – Press

With the jig holding the devices square, use the machine press to push the mouthpieces straight down until they snap flush - **no rocking or tilting**. Cap within 2 minutes of filling.

Quality Control: full snap, no gasket pinch, no visible gap.



Storage & Transport

01.) Keep upright at 90° (use foam trays whenever possible).

02.) Store cool (≤ 75 °F); avoid direct sunlight and hot vehicles.

03.) FIFO rotation for multiple batches; avoid air shipment of filled units when possible.

WARNING — PRIMARY CAUSES OF LEAKAGE

01.) Overfilling (above bottom of silicone sealing plug)

02.) Filling too hot (oil thins and may flood/bleed)

03.) Misalignment during capping (gasket pinch / incomplete snap)



COPYRIGHT © BUREAU ALL RIGHTS RESERVED