

ASTHMA vs. COPD

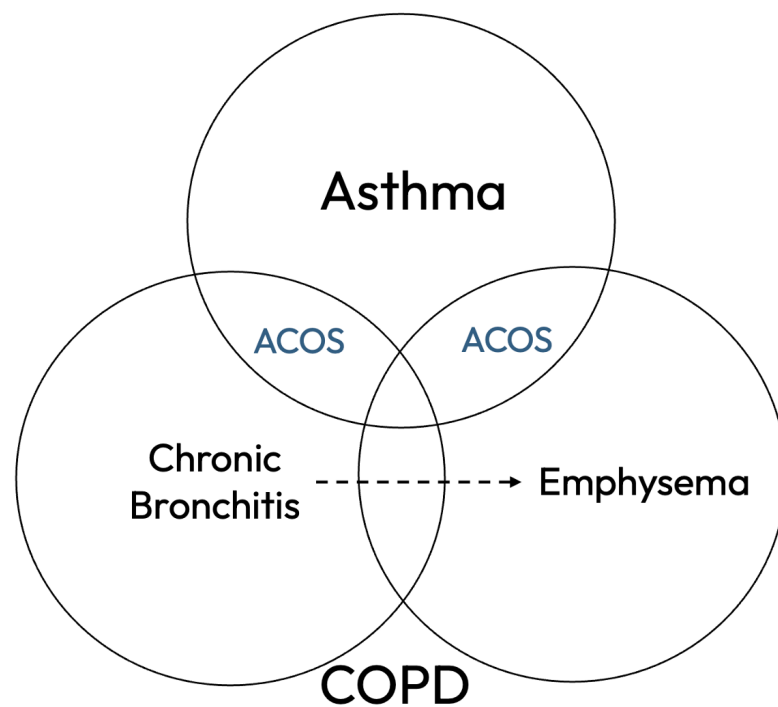
COMPARISON OF DISEASES STATES

VARIABLE	ASTHMA	COPD
Cell Type Present	Eosinophils	Neutrophils
Airway Activity	Hyperreactive leading to airway obstruction from bronchoconstriction.	Mucous hypersecretion leading to airway obstruction & remodeling
Bronchodilator Response	Yes	Limited
ICS Response	Yes	Limited

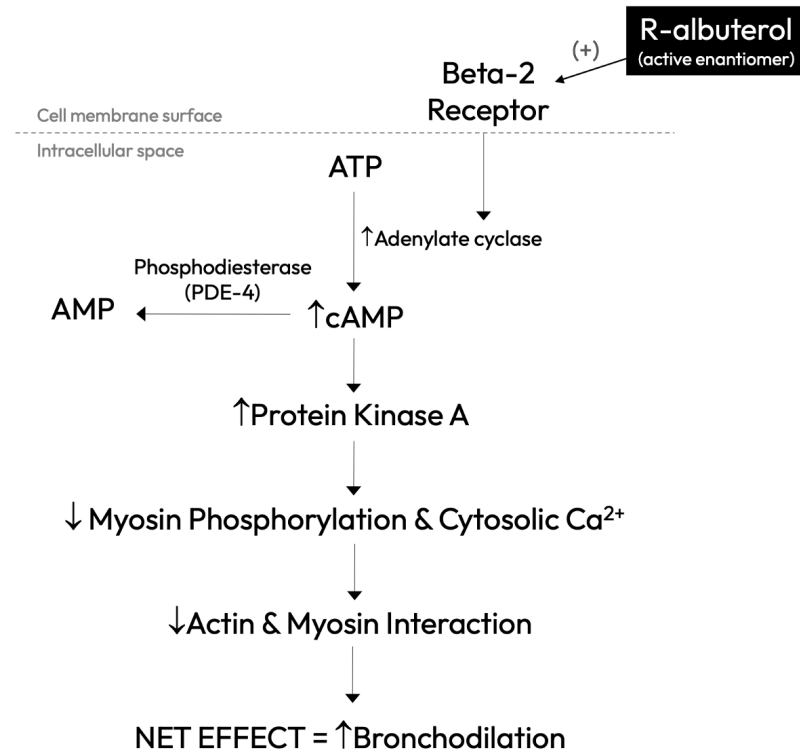
Note: The table represents the editor's best effort to summarize the intent of context the pathophysiology from various reputable sources of information. Any use is meant to be for educational purposes only and is not intended to replace medical decision making or clinical judgment.

OBSTRUCTIVE AIRWAY DISEASES

ASTHMA vs. COPD vs. ACOS



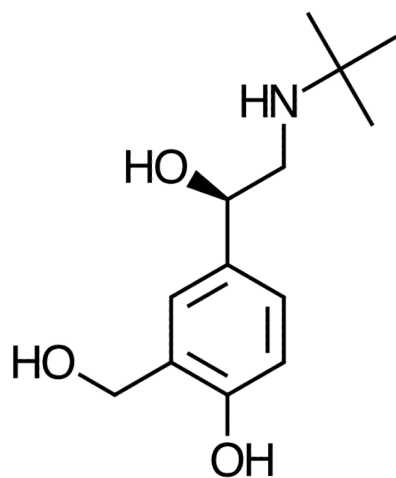
ALBUTEROL MECHANISM OF ACTION



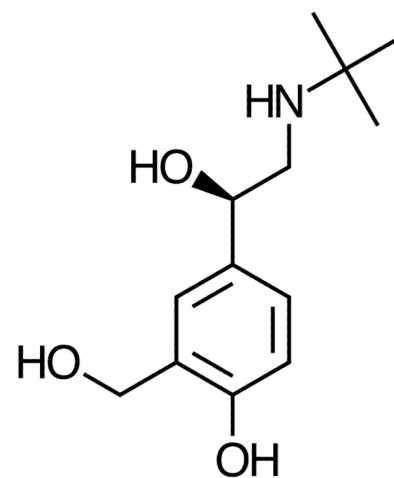


THIS IS WHY
with Dr. Busti

ALBUTEROL CHEMICAL STRUCTURES



Albuterol
(Active; R-enantiomer)



Levalbuterol
(Active; R-enantiomer)