

A hand in a black glove makes a peace sign against a background of a modern building. The building has a sign that says 'The Underline'. The sky is blue with white clouds. There are green plants in the foreground.

# The Underline 2025 Impact Report

Moving. Living. Growing. Connecting.



## A LIVING CORRIDOR FOR MIAMI

The Underline is Miami's living corridor, a **10-mile linear park and urban trail** where the city comes to move, live, grow and connect.

Stretching from **Brickell to Dadeland**, this **120-acre public space** transforms the land beneath the Metrorail into a vibrant network of paths, parks, gardens, and gathering spaces that support:

- Everyday mobility and movement
- Community life and connection
- Cultural expression
- Environmental stewardship
- Economic growth and vitality

In 2025, The Underline continued to expand its impact across Miami-Dade County. New park segments opened, thousands of residents and visitors participated in community programming, and innovative initiatives strengthened connections between people, nature, and opportunity.

From free public events and cultural programming to youth education, environmental initiatives, and workforce development, The Underline is more than a park and trail — **it is a transportation corridor that connects Miami through activation.**

# A Letter from Our CEO and Founder

Dear Friends of The Underline,

This past year has been a powerful reminder of what is possible when vision, community, and momentum come together.

What began as a bold idea to transform the land beneath Miami's Metrorail continues to grow into something even greater: a place that brings people together, enhances daily life by providing access to transit and a safe mobility corridor, and reflects the energy and spirit of Miami. Over the course of this fiscal year, The Underline continued to expand not only in size, but in impact.

We welcomed millions of visitors who used The Underline as a corridor to move, connect, explore, and experience Miami in new ways. As both a public space and mobility corridor, The Underline continues to improve how people travel through the city while also creating opportunities for community, culture, wellness, and everyday connection. This year, we received and maintained new park segments, expanded amenities, strengthened programming, and launched meaningful partnerships that deepened our impact across Miami.

This year showed how The Underline is becoming one of Miami's most dynamic public spaces and mobility assets. We are especially proud of the partnerships and support that helped make this progress possible, from donors and sponsors to our elected officials, public partners, volunteers, and community members who continue to believe in this vision.

As proud as we are of what has been accomplished this year, we are even more excited about what lies ahead. The Underline's momentum is building, and the future promises even more opportunities to serve Miami through connection, creativity, and community.

Thank you for being part of this journey with us. With gratitude and excitement for what's next!

**Eulois Cleckley**

Chief Executive Officer  
The Underline

**Meg Daly**

Founder & Executive Chair  
The Underline





# 2025

## A Year of Impact by the Numbers

Visitors

**2.7 million**

visitors walked, ran, biked and commuted on The Underline

Totals

**209 events**

public and private hosted

**745**

volunteers supported the park

**15 acres**

of gardens now open to the public



## Events

**49,727**

total event attendees

**86%**

of programming free and  
open to the public

## Volunteers

**2,415**

volunteer hours contributed

**\$79,000+**

estimated value of  
volunteer service

## Nature

**1,671**

trees planted

**60,000+**

native plants added

# Development: Our Growing Corridor

Development continued to strengthen The Underline's growth through revenue generation, donor support, and strategic partnerships.

In total, The Underline generated

**\$3.64**

million in revenue

**\$1.5**

million raised from new grants

**\$300,000**

through Give Miami Day

## Notable accomplishments

- Secured a programmatic partnership with the **Lennar Foundation** around workforce development
- Secured the naming partnership for the **Nikki Spoelstra Play Forest** in South Miami
- Launched the **FPL Fleet** with more than 10 branded golf carts and utility vehicles
- Secured **TD Bank's sponsorship of four microforests**
- Launched five **Inter Bike stations** with more than 50 bikes
- Launched The Underline's **food and beverage program**, now home to eight food trucks and cafes





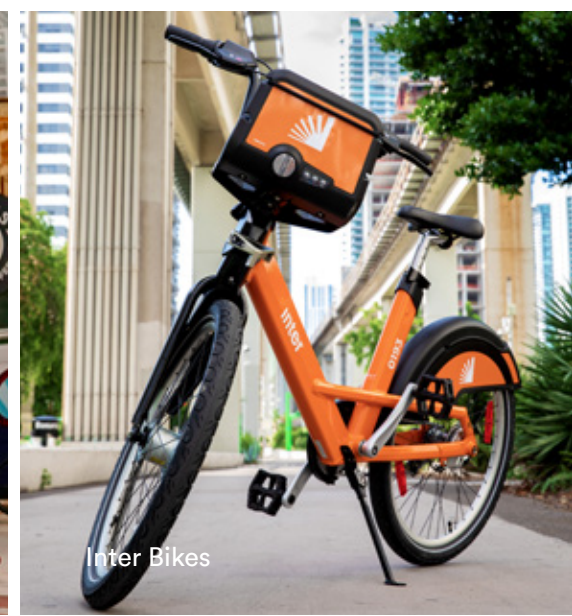
Meg Daly, Nikki Spoelstra, Mayor Levine Cava



TD Bank Microforest



Harbest Coffee



Inter Bikes



FPL Green Fleet

A group of four individuals, two women and two men, are standing on a paved sidewalk. They are all wearing matching blue polo shirts. The woman on the far left has her hands clasped in front of her. The woman next to her is wearing a wide-brimmed hat and has her hand near her chin. The man in the back is wearing a tan baseball cap. The man on the far right has a red beard and is wearing a camouflage hat with sunglasses on top. In the background, there is a modern building with a sign that says "The Underline" and some greenery.

# The Park Stewards Initiative

One of the most meaningful initiatives launched in 2025 was the Park Stewards program, a workforce initiative designed to create opportunity for formerly unhoused individuals, while strengthening park operations and staff development.



Through a partnership with Chapman Partnership and support from the Lennar Foundation, **The Underline hired individuals experiencing homelessness** and provided them with full-time employment maintaining and operating the park.

### Program outcomes in 2025:

- 6 Park Stewards were hired on The Underline
- Stewards earned living wages
- 4 of 6 stewards transitioned into their own housing by year-end

### Participants gained hands-on experience in:



This initiative improved park operations while creating real pathways toward stability, dignity, and long-term opportunity for participants.

### In Partnership with:



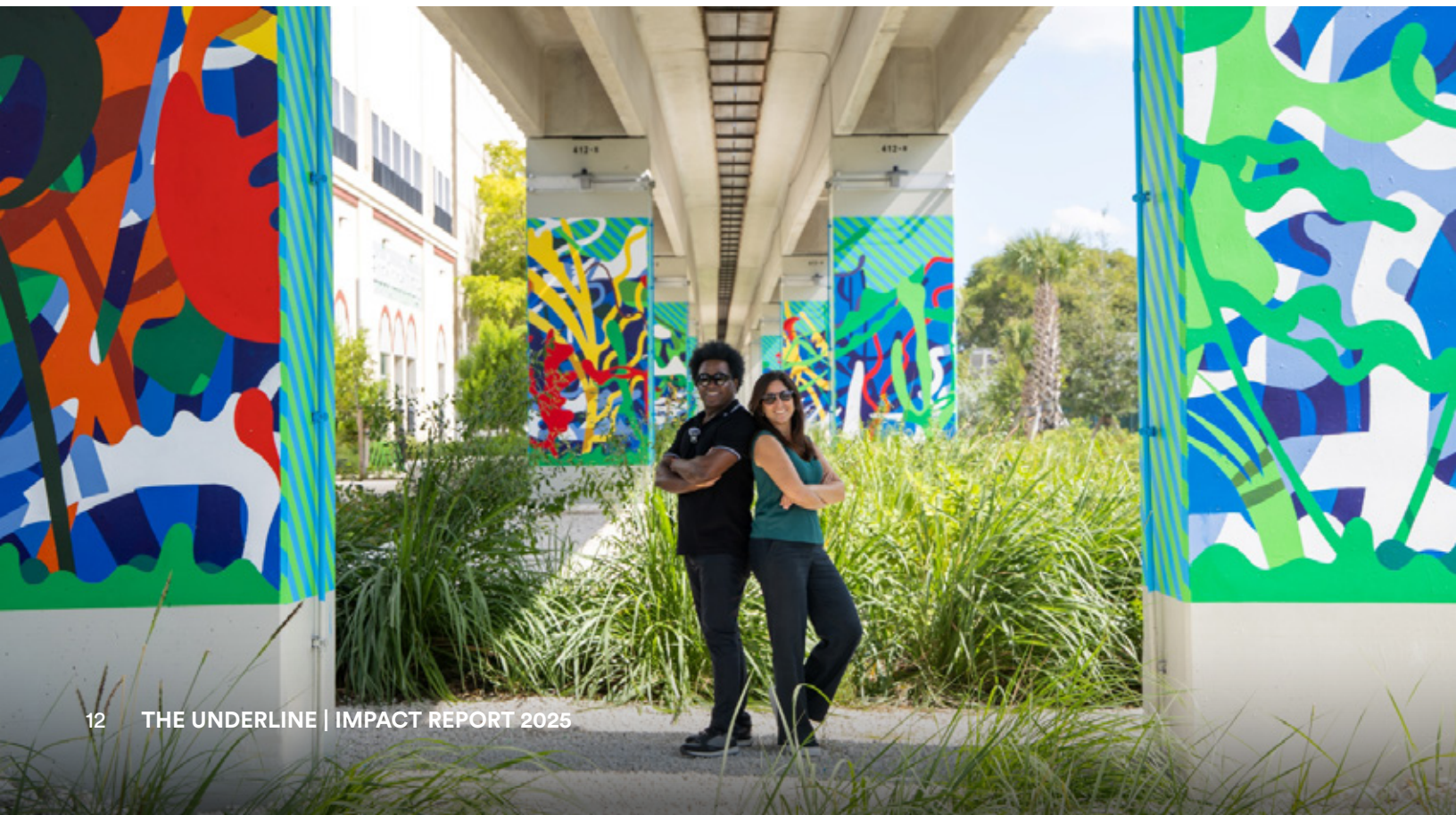
# Expanding The Underline

2025 marked significant growth for the park, with new spaces opening and existing areas enhanced to better serve the community.

## Key milestones:

- Received and maintained Segments 3 and 5 following their completion by Miami-Dade County
- Continued improvements to the **Urban Gym in Brickell**
- Enhancements to the **Typoe Sculpture Garden** between the Metrorail and Metromover in Brickell
- Installation of new **Cooling Centers** for frontline employees
- Completed infrastructure improvements, including lighting near the **River Room adjacent to the Miami River**, to improve park safety and visibility
- Coordination and installation of **Inter Bike share stations**

These improvements help ensure The Underline continues to grow as a welcoming, innovative and resilient public space for Miami.





Inter Bike share stations



Urban Gym



Type Sculpture Garden



Yoga in the River Room



#### Hardwood Hammock

This area of The Underline is built next to Simpson Park Hammock, a 7.8-acre remnant of the Brickell Hardwood Hammock designated by Miami Dade County as a Natural Community Forest, and nationally as an Old Growth Forest. Originally known as Jungle Park, 5.5 acres were set aside in 1913 to preserve what is now one of the last remaining tropical hardwood hammocks in Miami's urban core which ran from the Miami River to Coconut Grove along Miami's Rock Ridge.

# Marketing: Moving People Forward

Marketing continued to play a critical role in **connecting The Underline with the community**, promoting its programs and events, and strengthening the organization's overall mission.

Through a consistent mix of storytelling, event promotion, digital content, and media outreach, **marketing helped expand awareness of The Underline's impact across Miami** while driving deeper engagement with the community.

## Our Stats

**1.7**

million impressions

**42%**

increase in impressions

**11%**

increase in followers

**3.3%**

overall engagement rate

The Underline was also featured in more than **300** articles, including coverage from CNN, Yahoo, The Miami Herald and South Florida Business Journal.



# Events: Bringing Miami Together

Programming ranged from **cultural activations and art unveilings to wellness events and community gatherings.**

Standout moments included:

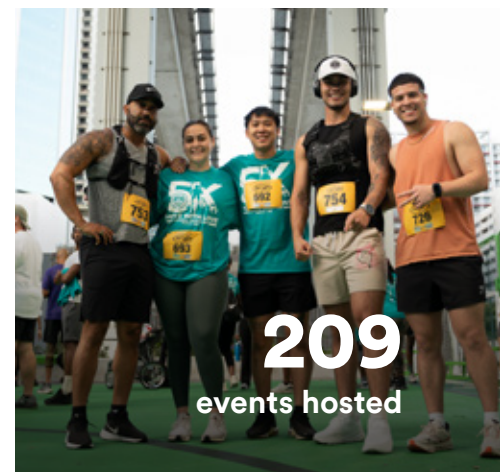
- The Underline's first 5K race hosted
- A **Miami Music Week Pop-Up** experience
- Lululemon Global Day of Running, with **600+ attendees**
- New World Symphony pop-up Performance
- *Temple of Milagros* art installation activation
- Inter Brazil Day, with more **than 5,000 participants**

Programming remains one of the most powerful ways The Underline connects with and supports the community.

The park also featured **40 community-produced events** created by partners including:

- Brickell Homeowners Association
- Publix
- Blue Missions
- Walking with a Purpose
- Brickell Run Club
- Lululemon

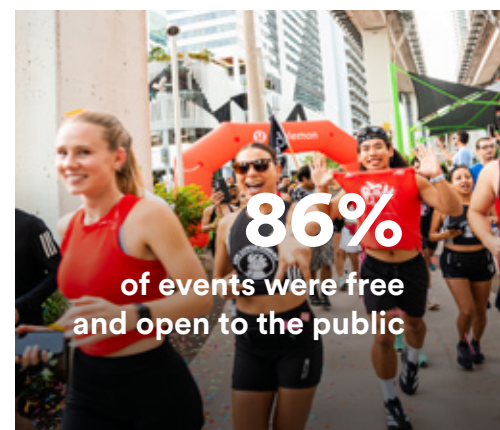
These collaborations demonstrate how **The Underline serves as a platform for community-led programming across Miami.**



**209**  
events hosted



**49,727**  
attendees participated



**86%**  
of events were free and open to the public

# Art in The Community

Public art continues to shape the cultural identity of The Underline.



Major art milestones in 2025 included:

- Installation of *Is Blue the Color of the Ocean?* by Bony Ramirez
- Launch of the **first Augmented Reality storytelling experience** tied to Bony Ramirez's sculpture
- Collaboration with Florida International University for Augmented Reality production
- Launch of the **Pillar Art Project** featuring Alexandre Arrechea's *Milagros in the Temple of Abundance*
- Selection of **Daniel Marosi** for the **Art Deco-inspired bench** project



**Bony Ramirez**  
*Is Blue the Color of the Ocean?*, 2024

Temporary sculpture  
80" x 30"

The Underline Urban Open

Scan the QR code for the augmented reality experience

Made possible with a donation from:  
**Niantic Inc. and John S. and James L. Knight Foundation**

Thank U To the people who made this possible

*Is Blue the Color of the Ocean?* is a large-scale public artwork of blue, green, and white, and a single gold-colored sphere. The sculpture has a double meaning, representing both the Caribbean diaspora and the ocean and great waters and a spiritual journey connecting people between two worlds. The sculpture is a representation of the ocean of time, blue and white, with a gold-colored sphere that is a symbol of hope and a reminder to us all that we are all connected to a new country and ready to have a place in the new home we can feel as welcoming as your own country.

Bony Ramirez is a New Jersey based artist whose work draws inspiration from the Caribbean diaspora and his own life.



# Nature, Learning, and Environmental Stewardship

The Underline continues to grow as one of Miami's most important urban ecological corridors.

In 2025, the horticulture team:

- Planted **1,671 trees** and **60,000+ native plants**
- Opened **15 acres of gardens** to the public
- Planted the park's first **two microforests**

The team also continued the **Green Leaders program**, now entering its third year, helping train the next generation of environmental stewards.

Additional education initiatives included:

- 7 field trips hosted
- 17 environmental education events
- Collaboration with **6 nonprofit partners** through the Growing Miami's Green Corridor program funded by the USDA





# Volunteers Power the Park

The Underline’s volunteer community continues to grow and play a critical role in maintaining and activating the park.

In 2025

**745**

volunteers participated

**489**

volunteers recruited

**2,415**

hours contributed

**190+**

events supported

The collective value of volunteer service exceeded **\$80,000**.

Volunteers **help maintain gardens, support events, welcome visitors**, and strengthen the community that surrounds The Underline.



The financials reflected in this report represent the time period of October 1, 2024 through September 30, 2025.

# Friends of The Underline & The Underline Conservancy

## Financials

Impact Report	2024	2025
Contributions	932,622	4,390,410
Non-government grants	1,159,551	532,000
Government grants	2,234,059	1,989,975
	<b>4,326,232</b>	<b>6,912,385</b>
Investment income	489,691	426,331
Fundraising event revenue (net)	460,009	-
Park earned revenue	-	116,567
In-kind contributions	188,213	146,053
Other revenue	46,880	36,954
Total Revenue	<b>5,511,025</b>	<b>7,638,290</b>
Salaries and benefits	1,716,792	2,437,306
Park operating expenses	1,367,579	1,153,007
Park programming and art	617,969	1,064,967
Professional fees	727,329	620,546
Insurance	56,199	83,991
Occupancy	74,686	93,047
Marketing and engagement	-	68,633
Other expenses	151,713	182,042
<b>Total Expenses</b>	<b>4,712,267</b>	<b>5,703,539</b>
Increase in Net Assets	798,758	1,934,751

501(c)(3) not-for-profit organization

# Thank U!

Our bold vision is driven by **public and private contributions**. With more financial resources available, we can **expand our reach, improve our services, and create better outcomes and experiences for visitors, stakeholders, and partners**. This leads to greater impact and support, ultimately fueling success. By supporting The Underline, donors and partners make a **direct contribution to a safe, multimodal, resilient linear park in Miami's urban core**.

Special thank you to our public partners - Miami-Dade County, City of Miami, City of Coral Gables, City of South Miami, State of Florida, USDOT and FDOT.

Thank you to all of you who donated in support of The Underline during the 2024/25 fiscal year. The following donors contributed over \$10,000 from October 1, 2024 to September 30, 2025, supporting the mission and vision to create a more connected, resilient and mobile Miami-Dade County.

Allegany Franciscan Ministries	Josh Schertzer
American Beverage Foundation for a Healthy America	Judith H. Zeder
Anthony R. Abraham Foundation, Inc	Knight Foundation
Bank of America	Leesfield Family Charitable
Baptist Health	Lillian Weinberg
Batchelor Foundation	Microsoft Philanthropies
Bloomberg Philanthropies	NextEra Energy Foundation, Inc.
Braman MIAMI	Nolan Family Foundation
Camilo Miguel	Nolan Reynolds International
Citadel LLC	Norma Jean Abraham
City National Bank	NV2A Central Joint Venture
Daly Family Fund	Publix Super Markets Charities, Inc.
Debi Wechsler	Related Companies
Field Operations	Robert F. Schumann Foundation
Florida Beverage Association	Rodolfo Prio Touzet
Florida Power & Light	Roger Terrone
Gazit Horizons, Inc.	Salma Merchant Rahmathulla
George Williamson	Swire Properties Inc
Goodwill South Florida	TD Bank Charitable Foundation
Google	Terra Group
Greenberg Traurig, P.A.	The Collection
Hearst Foundations	The Cowles Charitable Trust
Holland & Knight LLP	The Dunsbaugh-Dalton Foundation, Inc.
Honda USA Foundation	The Frederick A. DeLuca Foundation
Hotwire Communications	The Kirk Foundation
Inter	The Lennar Foundation, Inc.
Ira H. Leesfield	The Miami Foundation For A Greater Miami
Jack Glottmann	The Ruth Anderson Foundation
Jessie Wolfson	The Tonkinson Foundation
J.P. Morgan Securities LLC	USDA Forest Service Urban and Community Forestry

# Looking Ahead

As The Underline **continues to expand**, the focus remains clear: Create world-class public spaces, strengthen community connections, support culture, wellness, and opportunity across Miami.

With **new programming, partnerships, and park segments on the horizon**, The Underline is continuing to grow as one of the most important civic spaces in South Florida.



## What's Coming



### Fitness Room

Behind the Gables Fire Station  
by Riviera Drive



### The Wilds

Between Donatello Street  
and Orduna Drive



### Stormwater Ponds

Between Granada Boulevard  
and Donatello Street



### Pineland Courts

Coral Gables near  
Carrillo Street



### Rock Ridge Plaza

At University of Miami  
north of Stanford Drive



### Nikki Spelstra Play Forest

By South Miami  
City Hall

# Underline Boards of Directors

## Friends of The Underline & The Underline Conservancy

### Friends of The Underline

**Meg Daly**

Founder, Executive Chair

**Rudy Prio Touzet**

Vice Chairman, Banyan  
Street Partners

**Christine Yormack**

Treasurer,  
Bank of America

**Jessi Berrin**

HealthMerch

**Jessica Brumley**

University of Miami

**Alfred Bunge**

J.P. Morgan

**Giovanni Castro**

Amazon

**Francesca de Quesada Covey**

Knight Foundation

**Josenrique Cueto**

Unicapital Asset Management Group

**Erin Dowd**

Baptist Health

**Iris Escarra**

Greenberg Traurig

**Daniel Gibson**

Purpose Built Communities

**Brian Y. Goldmeier**

BYG Strategies

**Lucas Hernandez**

Microsoft Philanthropies

**Ira Leesfield**

Leesfield Family Foundation

**Dave Martin**

Swire Properties

**David Martin**

Terra Group

**Camilo Miguel, Jr.**

MAST Capital

**Kaio Philipe**

INTER

**Salma Rahmathulla**

Pelicans Group

**Miriam Ramos**

Holland & Knight

**Josh Schertzer**

Nadia Partners

**Roger Terrone**

Retired CPA

**Christian Ulvert**

EDGE Communications

**Debi Wechsler**

Philanthropist

**Steven Wernick**

Wernick & Co

**Jane Wooldridge**

Freelancer

**Jason Bell**

Baptist Health

**Michael Rojas**

Secretary, Chief Miami-  
Dade County Parks,  
Recreation, and Open  
Spaces Department  
Right-of-Way Aesthetic  
& Assets Management  
Division (R.A.A.M)

**Carmen Manrara**

Continental PLLC

**Juan Mullerat**

Plusurbia

**Nicole Tallman**

1st Vice Chairwoman,  
Director of Policy and  
Legislative Affairs to  
Miami-Dade County  
Mayor Daniella Levine  
Cava

**Melvin Cartagena**

Miami-Dade County  
Department of Transpor-  
tation & Public Works,  
Chief Financial Officer

**Kevin Walford**

Miami-Dade County  
Transportation Planning  
Organization Transit and  
Regional Manager

### The Underline Conservancy

**Meg Daly**

Founder, Executive Chair

**Stu Blumberg**

2nd Vice Chairman,  
Retired



# The Underline

Thanks to the entire Friends of The Underline team who work 24 hours a day, 7 days a week, 365 days a year to make sure our visitors have enduring joyful experiences.

## Leadership Team

**Eulois Cleckley** | Chief Executive Officer  
**Patrice Gillespie Smith** | President & COO  
**Jake Moskowitz** | Chief Revenue Officer  
**Michael Ginsberg** | Chief Financial Officer  
**Lisle Bowen** | Chief Marketing Officer

## The Underline Team

**Theresa Amado** | Sr. Events & Programming Coordinator  
**Erik Austin** | Manager of Safety and Security  
**Lazara Ballester** | Office Operations Coordinator  
**Lisa Barber-Hannaway** | Events & Programming Manager  
**Asha Bertsch** | Horticulturist  
**Miguel Claro** | Maintenance Services Supervisor  
**Naomi Cruz** | Graphic Designer  
**Natasha Dadlani** | Marketing Coordinator  
**Meg Daly** | Founder, Executive Chair  
**Felipe Delgado** | Security Supervisor  
**Adael Flores** | Security Supervisor

**Elissa Eguiluz** | Gardener  
**Masi Faroqui** | Community Outreach Manager  
**Ehudes Garcia** | Senior Facilities Coordinator  
**Charlie Giaimo** | Development Coordinator  
**Kate Gilhuly** | Database Administrator  
**Ashley Glenn** | Volunteer Coordinator  
**Rina Gitlin** | Open Space Curatorial Manager  
**Dominique Jacques** | Community Liaison  
**Nick Justicz** | Project Manager  
**Erbin Lozano Terreros** | Facilities Coordinator  
**Celeste Maillard** | Community Forest Coordinator  
**Carlos Marmol** | Gardener  
**Cesar Ramos** | Park Operations Manager  
**Jill Swerdlow** | Community Liaison  
**Raphael Vulcain** | Events Coordinator  
**Julio Villarreal** | Manager of Internal Operations  
**Jamal Wilson** | Marketing Manager  
**Eleanor Zelek** | Gardener

