

BACK TO BLACK

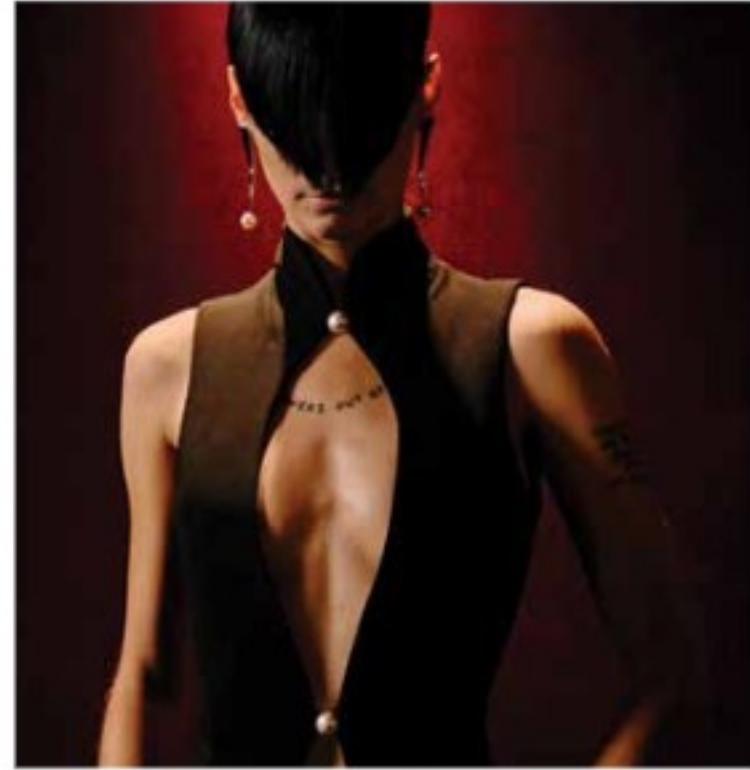
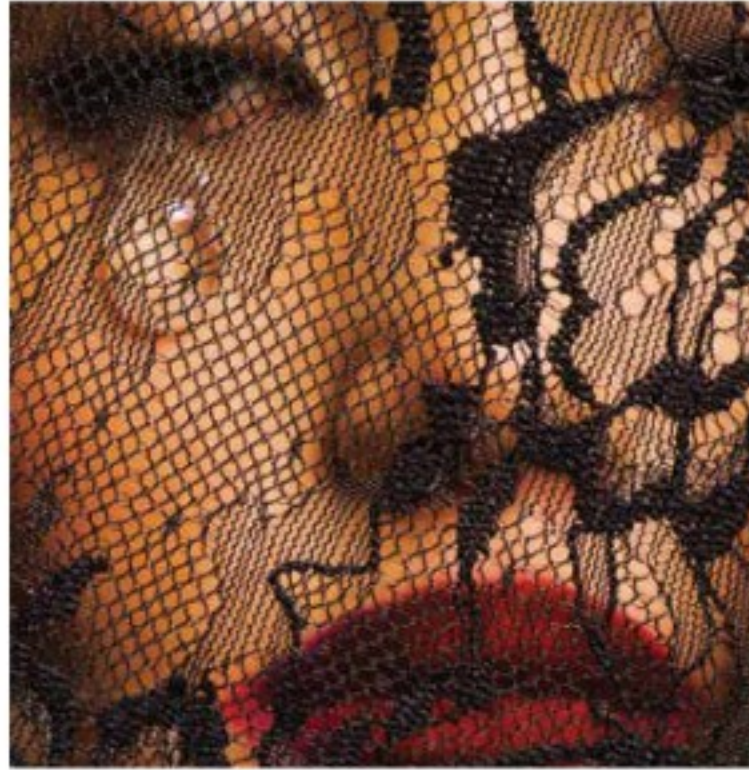
BACK TO BLACK



TREND CONCEPTS //: FW26/27

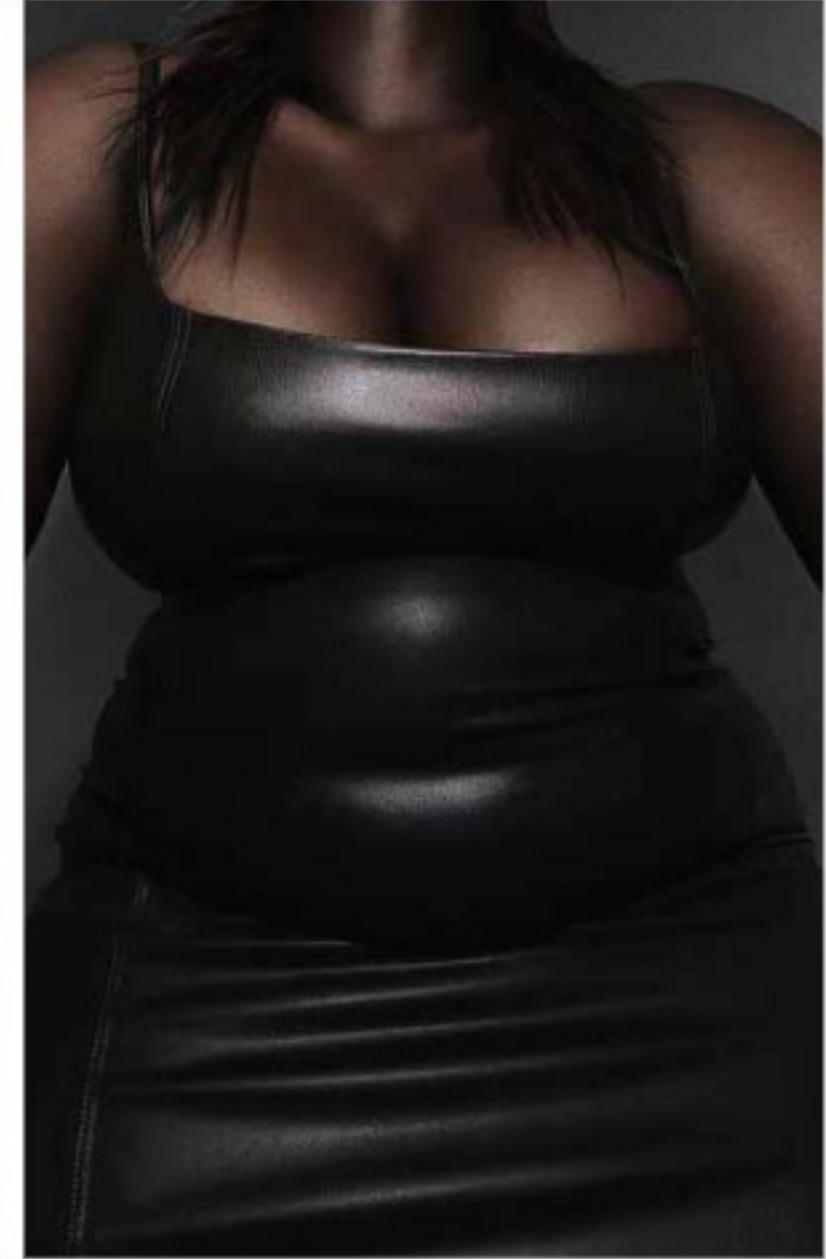
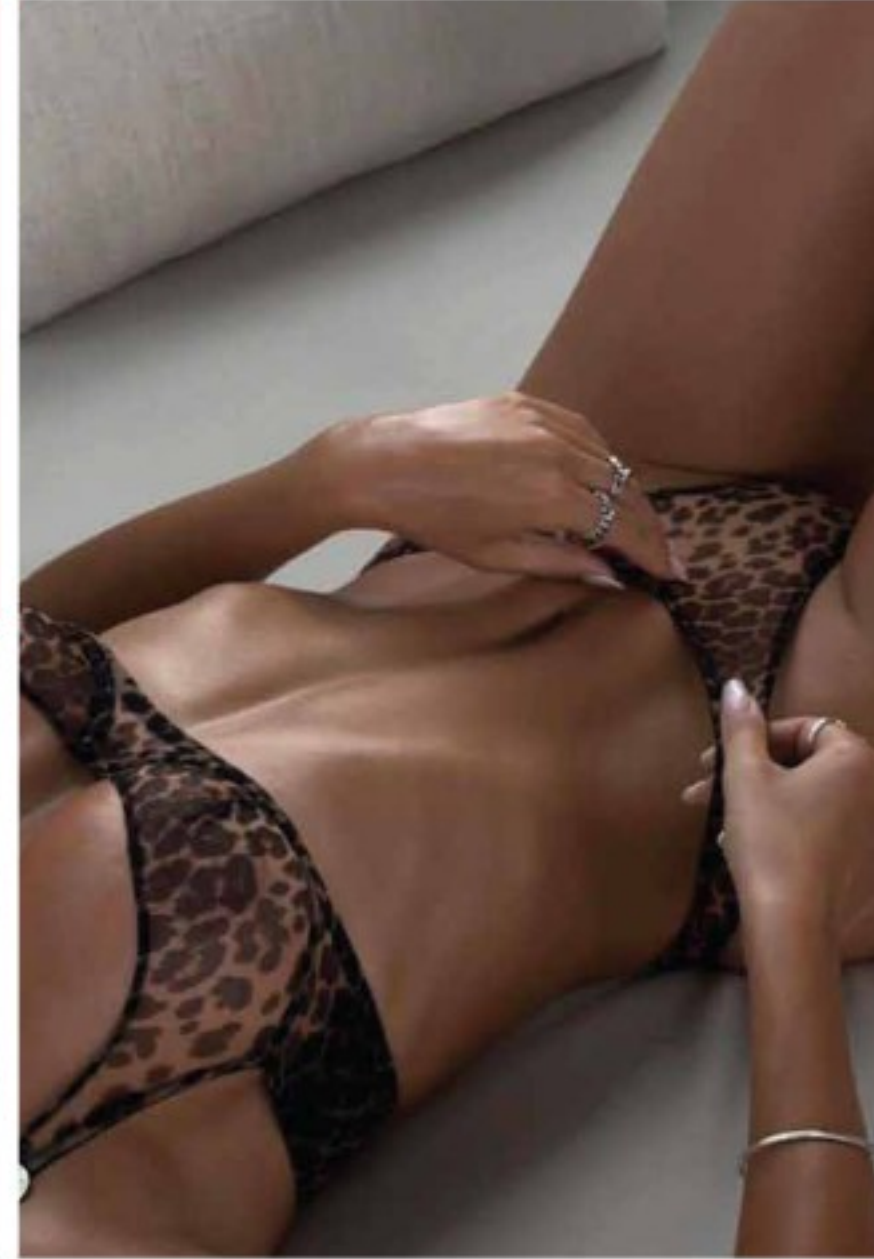
ROMANTICIZE THE DARKSIDE

MOOD | Leverage the evocative power of dark hues through design updates like dimensional surfaces, glints of light, or cinematic silhouettes that elevate ephemeral moody hues into glamorous pieces still tinged with intrigue.

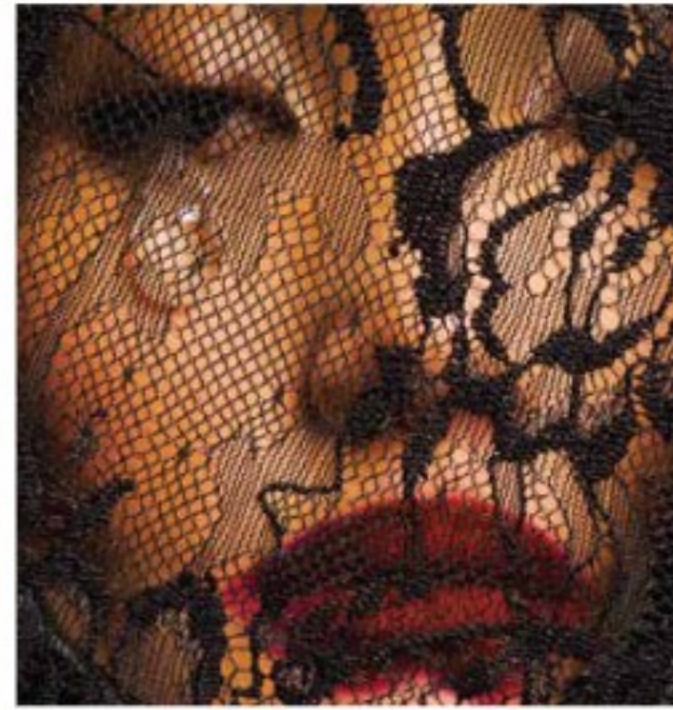


BACK TO BLACK

Submerged in a paradox of energetic darkness, the colors from our FW 26/27 Back to Black story offers a pulsating glow of moody, deep tones from Jet Black, Rhubarb, and Silver peony that evoke the dimensional nuances of shadows



*“Vampiric Rebel” (noun) //
A mythical creature that combines the characteristics
of a vampire and a rebel, known for defying norms and
conventions while possessing vampiric qualities. They
actively opposes or challenges established
norms, rules, or authority*



TREND CONCEPTS //: FW26/27

TRENDING: COLOUR ON THE CATWALK

BLACK

FASTEST RISING
COLOUR



FW25 CATWALK
VS
FW24 CATWALK



BLACK

BLACK EMERGED AS A PROMINENT COLOR TREND IN PARIS DURING THE A/W 25 SHOWS, ESPECIALLY WHEN PAIRED WITH LACE. THE BACK TO BLACK TREND WAS SHOWCASED THROUGH A FUSION OF UNDERWEAR AND OUTERWEAR STYLES, FEATURING SHEER FABRICS, DELICATE LACE, AND SATIN. THESE STRIKING LOOKS DOMINATED THE FW25 CATWALKS THIS SEASON WITH A SOPHISTICATED AND ALLURING APPEAL.

TREND CONCEPTS //: FW26/27

BACK TO BLACK



TREND CONCEPTS //: FW26/27

TRENDING: PRINT ON THE CATWALK

LEOPARD



FW25 CATWALK
VS
FW24 CATWALK



LEOPARD

BLACK EMERGED AS A PROMINENT COLOR TREND IN PARIS DURING THE A/W 25 SHOWS, ESPECIALLY WHEN PAIRED WITH LACE. THE BACK TO BLACK TREND WAS SHOWCASED THROUGH A FUSION OF UNDERWEAR AND OUTERWEAR STYLES, FEATURING SHEER FABRICS, DELICATE LACE, AND SATIN. THESE STRIKING LOOKS DOMINATED THE FW25 CATWALKS THIS SEASON WITH A SOPHISTICATED AND ALLURING APPEAL.

TREND CONCEPTS //: FW26/27

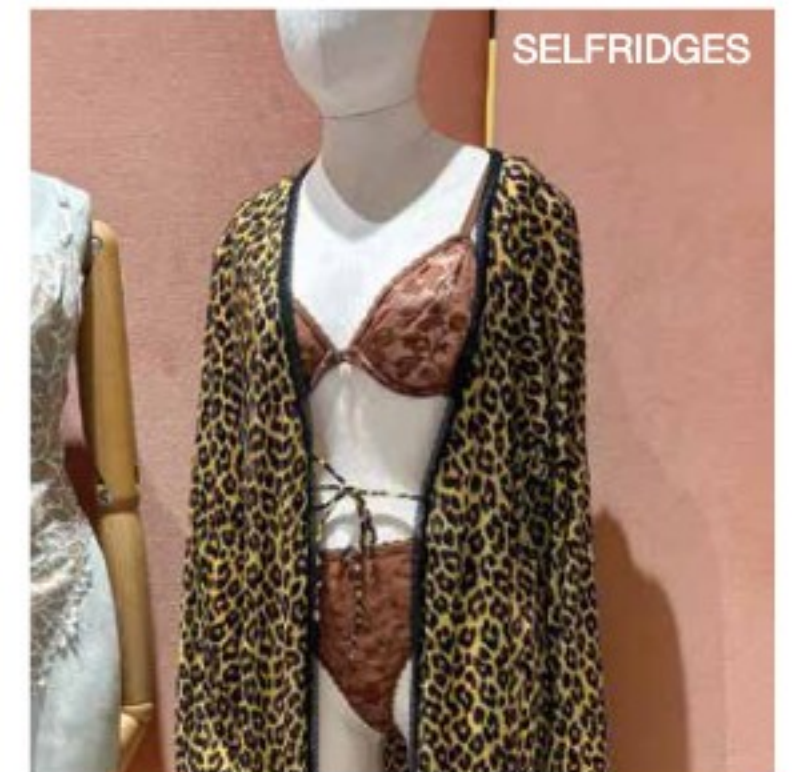
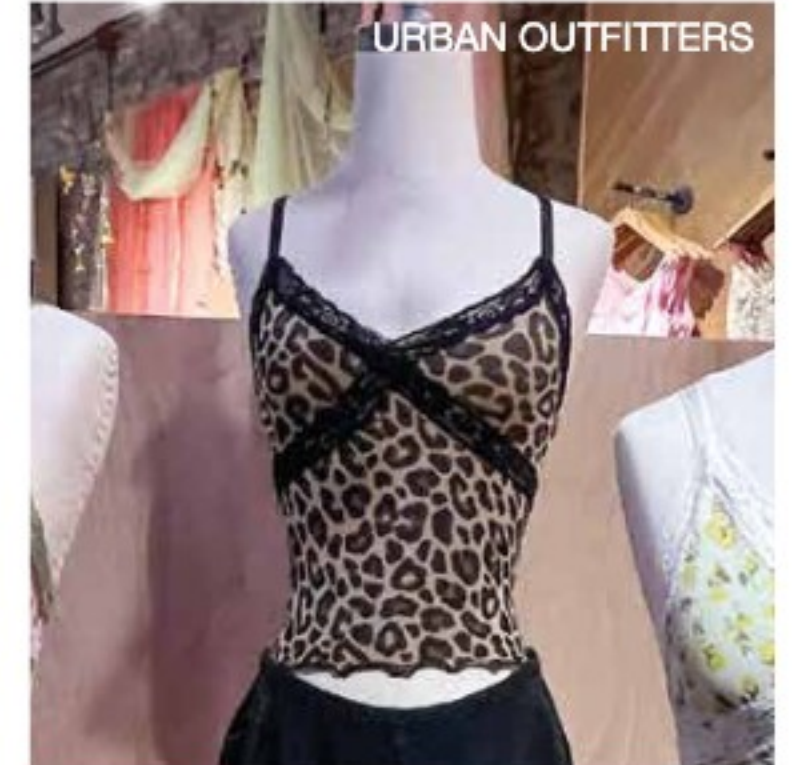
LEOPARD IN RETAIL

Concept:

Following the strong growth in women's apparel, retailers back leopard sleepwear and matching lingerie sets. Robes, camisoles and nightdresses are favoured for mainstream merchandising, while gloves update #UnderwearOuterwear styling. Google searches for "leopard print bra" increased +40.8% YoY and "leopard print socks" increased +200% YoY.

Design Direction:

The design direction for the leopard trend focuses on blending edginess with sophistication by pairing leopard print with delicate galloon lace. This combination adds a touch of femininity to the bold animal print, embracing the innerwear as outerwear trend. The result is a stylish and daring look that exudes confidence and elegance.



WILD SIDE



ANIMAL INSTINCT

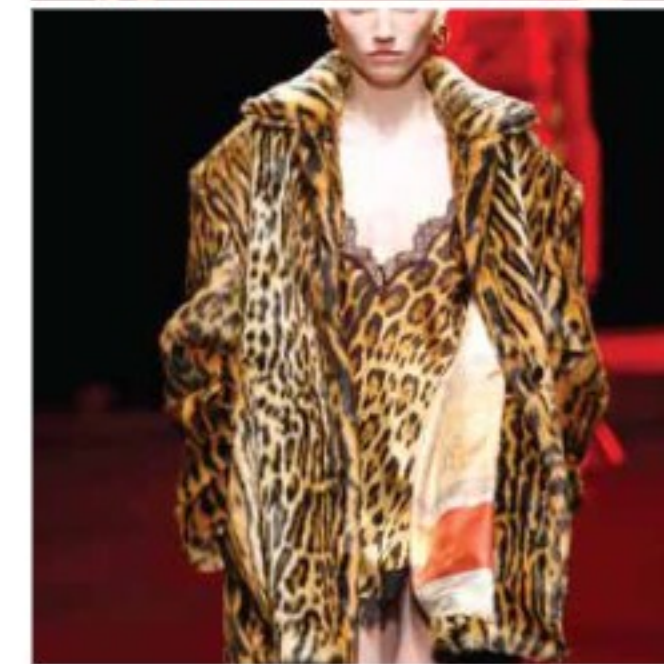
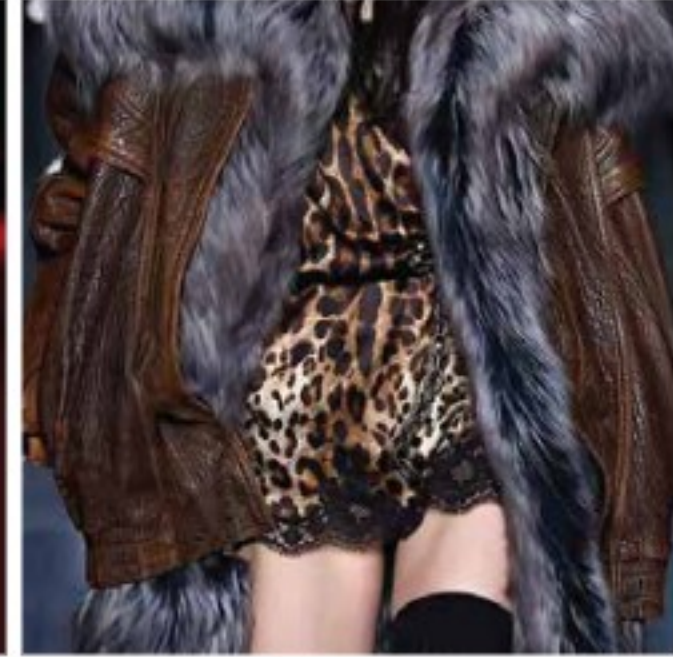


FABRIC DIRECTION



Stretch Satin

CREATIVE DIRECTION



COLLECTION://

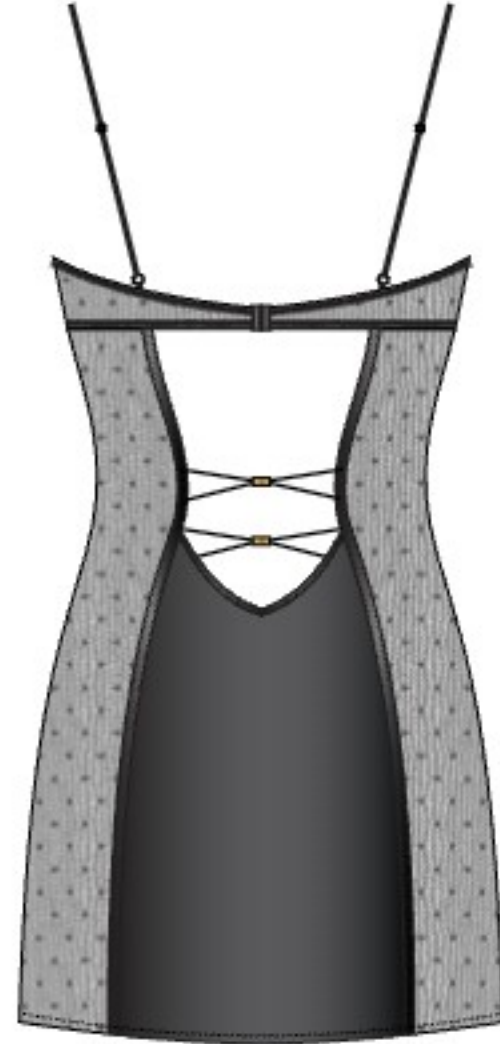
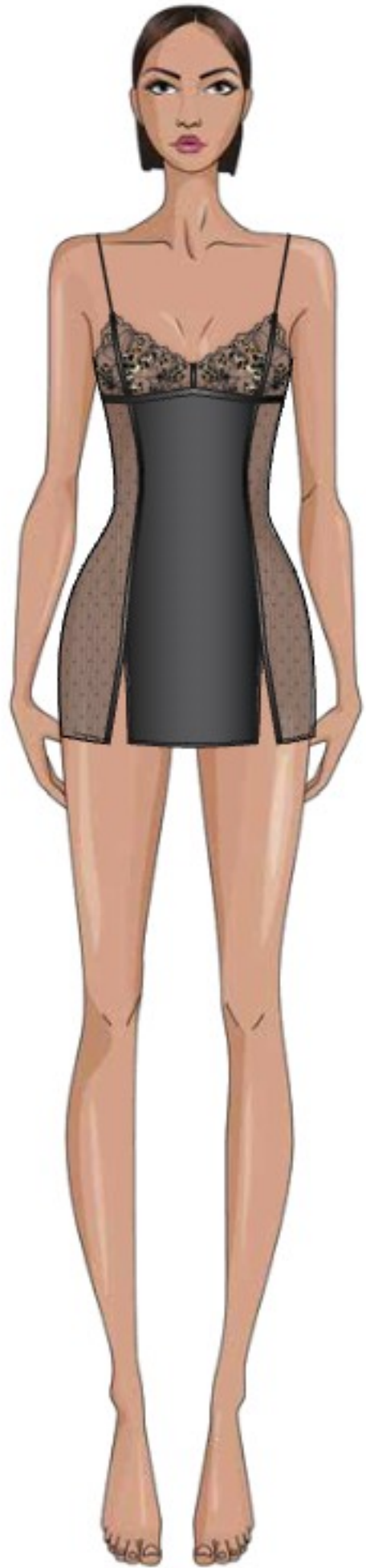
003-RR-00520 Satin & hand cut lace teddy

003-RR-00517 Satin & hand cut lace wire bra

003-RR-0051 Satin & hand cut crop

003-RR-00519 Satin french knickers

LEOPARD EMBROIDERY



FABRIC DIRECTION

Leopard Embroidery
100% Polyester



CREATIVE DIRECTION



COLLECTION://

003-RR-00534 Underwire bra

003-RR-00536 Brazilian

003-RR-00537 Thong

003-RR-00538 Slipdress

CATEGORY INSPIRATION

Allover lace

Allover lace has surged in popularity both in retail and on the catwalk. This fabric remains a favored choice in lingerie, aligning with the growing demand for "second-skin" base layers and the #FeminineGrit movement. Retailers are embracing the trend by offering sheer lace garments in sculpting fits, such as bodysuits and two-piece sets. According to Google trends, searches for "lace bra" have seen a significant increase of +68.6% year over year, with top related searches including "brown lace bra" (+120%) and "lace bra and panty sets" (+120%). This data highlights the continued appeal of allover lace in the fashion industry, reflecting consumers' interest in feminine yet empowering designs. The versatility and timeless elegance of lace make it a staple fabric that effortlessly combines sophistication with a touch of sensuality, appealing to a wide range of tastes and preferences.



LANE CRAWFORD



SKIMS



AUBADE



FLEUR DE MAL



VICTORIA'S
SECRET

TREND CONCEPTS //: FW26/27

TRENDING SHAPE: FW25 CATWALK

ALLOVER LACE

TRENDING FABRIC



FW25 CATWALK
VS
FW24 CATWALK



LUDOVIC DE SAINT SERIN
FW25

STELLA MCCARTNEY
FW25

DOLCE & GABBANA
FW25

CHLOE
FW25

BLUMARINE
FW25

PATOU
FW25

ALLOVER LACE

THE FW25 CATWALK SHOWCASED AN ARRAY OF STUNNING ALL-OVER LACE STYLES, WITH DESIGNERS LIKE BLUMARINE AND CHLOE LEADING THE TREND. THE DELICATE AND INTRICATE NATURE OF LACE WAS PROMINENTLY FEATURED, ADDING A TOUCH OF ELEGANCE AND FEMININITY TO THE COLLECTIONS. FROM ROMANTIC DRESSES TO SOPHISTICATED SEPARATES, LACE TOOK CENTER STAGE IN CREATING A SENSE OF TIMELESS BEAUTY AND GRACE.

TREND CONCEPTS //: FW26/27

FOREVER STRETCH

The ultimate stretch lace range:

A 4 way stretch Creora yarn lace with a 4 way stretch spacer cup.

Moulded cups to give the most comfortable fit throughout the month, making this the ultimate forever stretch range.



COLLECTION://

003-RR-00486 Allover lace top

003-RR-00487 Allover lace off shoulder dress

003-RR-00484 Allover lace bodysuit

003-RR-00485 Allover lace high apex triangle

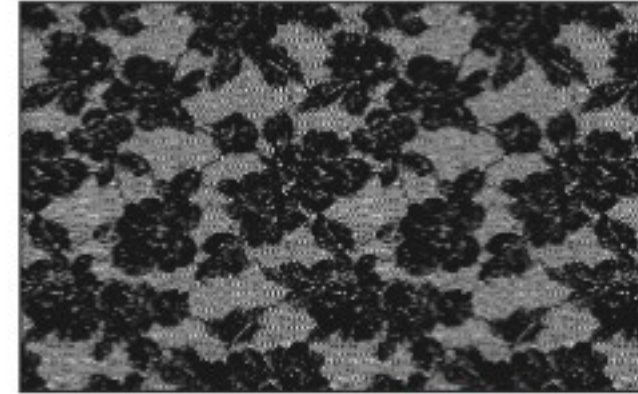
003-RR-00488 Allover lace wired demi

003-RR-00489 Allover lace brazilian



FABRIC DIRECTION

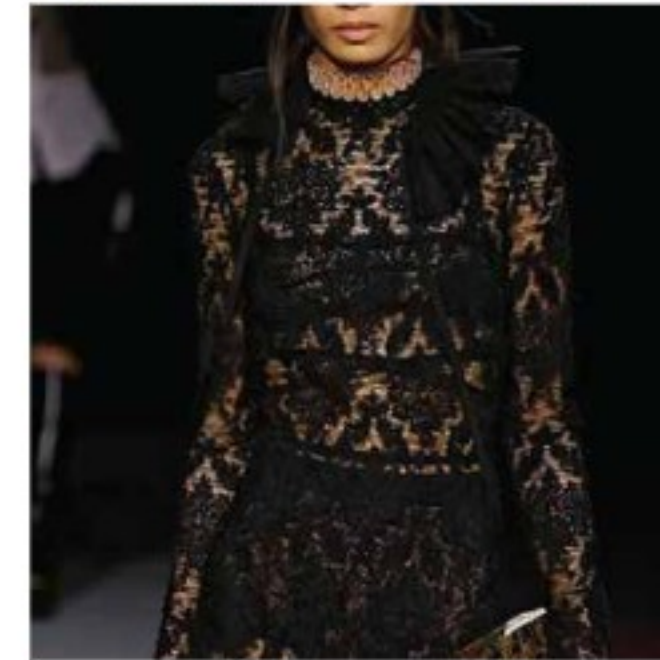
CREORA easy flex
allover lace.



4 way stretch spacer foam.
Made to fit perfectly. The
cups to fit your body.



CREATIVE DIRECTION



KEY ITEM: THE LACE CAMISOLE SET

CHLOE
FW25

BORA AKSU
FW25

VALENTINO
FW25

CHLOE

ICONE LINGERIE

KAT THE
LABEL

WILD LOVERS

FOR LOVE &
LEMONS

FOR LOVE &
LEMONS

Romantic, vintage-inspired lace sets are influenced by romantic legacy and bohemie trends. Upgrade pieces through pretty feminine details, including bows or floral appliqués and frayed or eyelash lace edges

TREND CONCEPTS //: FW26/27

VINTAGE ROSE

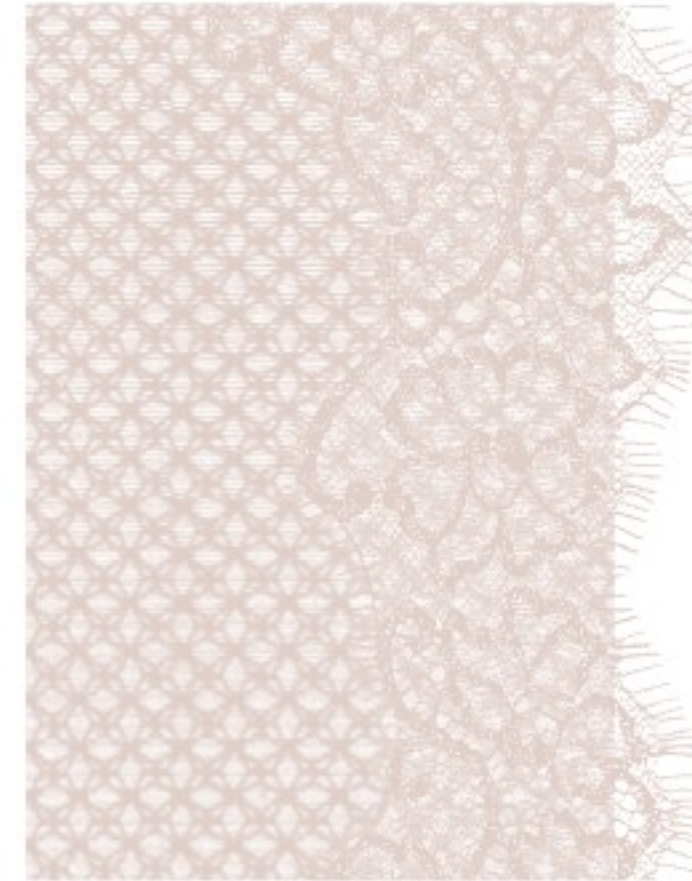


COLLECTION://
003-RR-00549 Underwire Balcony Bra
003-RR-00550 String Brief
003-RR-00548 Cami Top

FABRIC DIRECTION

Geo Mesh

Cut-out eyelash lace trim



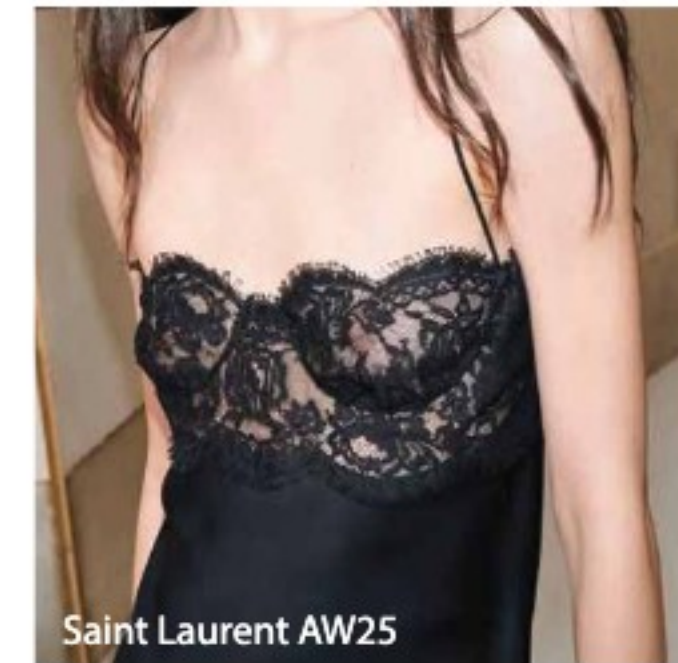
CREATIVE DIRECTION



Valentino AW25



Saint Laurent AW25



Saint Laurent AW25

DARK EDGES



TREND CONCEPTS //: FW26/27

RUNWAY REACTIVE

Concept:

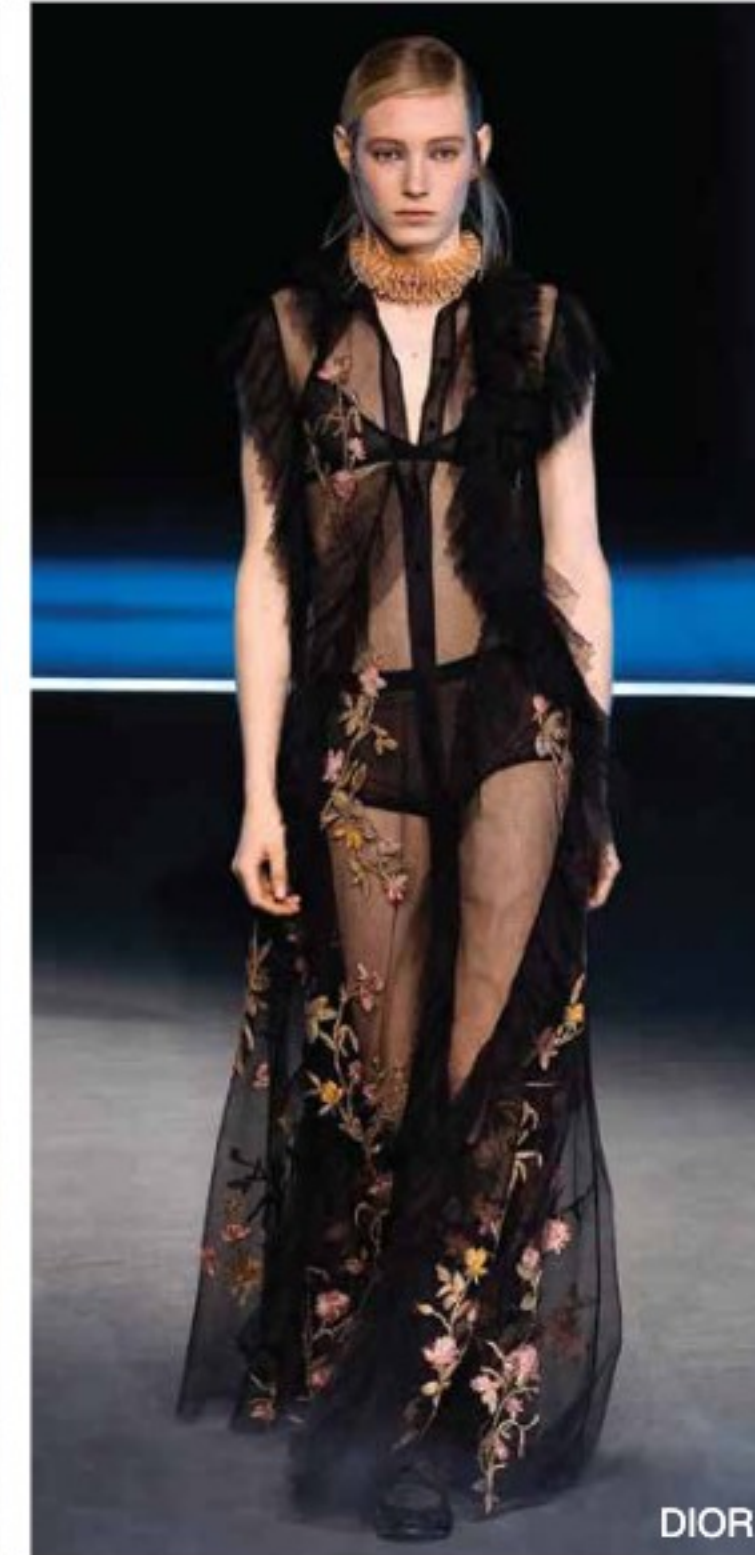
Design Direction for runway reactive is to look at key trending items on the catwalk for the season to help guide you in adding them to your assortment.

Design Direction:

#DemureDressing was the most used trend tag on the Fashion Feed for A/W 25/26. The season saw less true lingerie on the catwalks, but brands and retailers can capitalise on the shift to more covered-up silhouettes. Full-coverage briefs, longer-length slips, lace hosiery and layered pyjama looks will all play into a more conservative or classic mood.

Key Items:

- The Pyjama
- Longer length slips and nightdresses
 - lace tights
- The lace bralette
- The short shorts

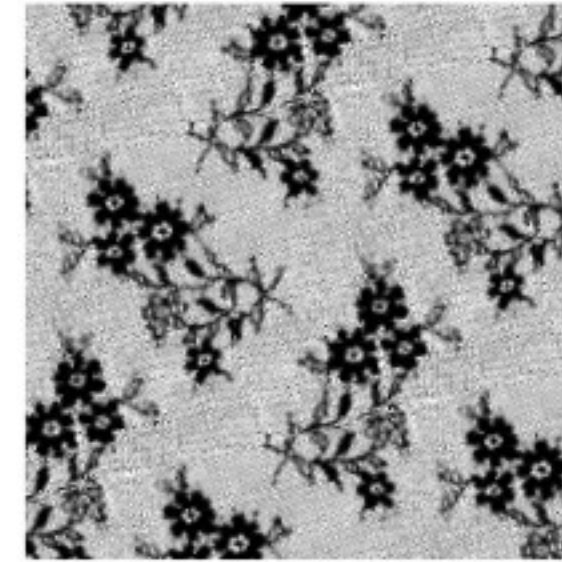


NOCTURNAL ROMANCE



FABRIC DIRECTION

Allover lace
86.3% Nylon /
13.7% Spandex /
144CM



CREATIVE DIRECTION



COLLECTION://

003-RR-00512 Peek-a-boo Bralette
003-RR-00513 Crotchless Tanga Brief
003-RR-00514 Babydoll
003-RR-00515 Off shoulder long sleeve top
003-RR-00516 Shorts

GYPSY ROSE



FABRIC DIRECTION

Dot Mesh

Eyelash lace galloon



CREATIVE DIRECTION



COLLECTION://

003-SS-00042 Spot mesh with eyelash galloon bodysuit

003-SS-00041 Spot mesh with eyelash galloon underwired bra

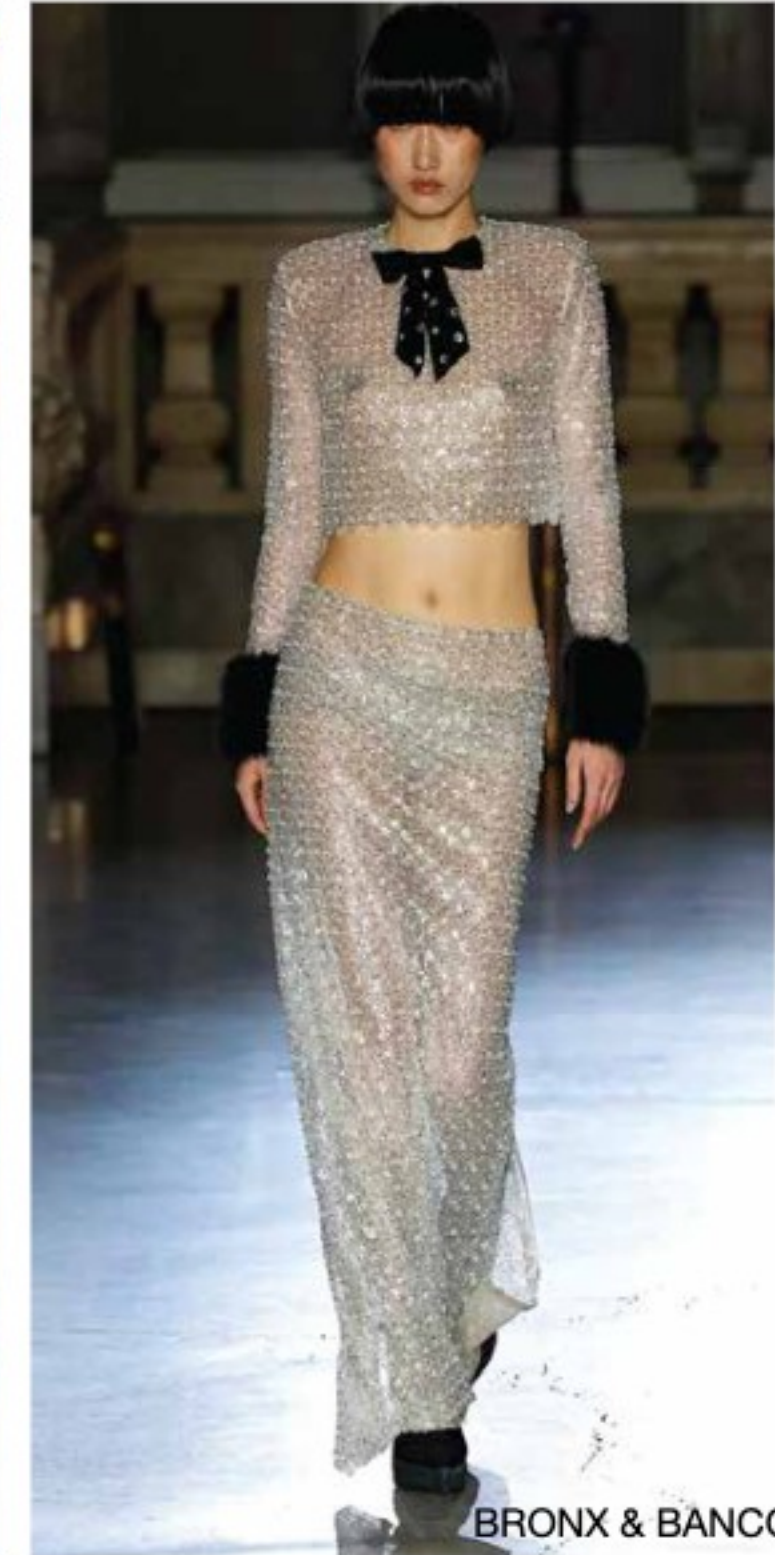
003-SS-00044 Spot mesh with eyelash galloon tanga

003-SS-00043 Spot mesh with eyelash galloon long robe

TREND CONCEPTS //: FW26/27

METALLIC TONES

Luxurious and ornate patterns are enhanced with high-shine brocades, damask-style jacquard, embossed velvet, panne velvet, devoré, printed silkies, and metallic finishes, creating an atmosphere of opulence. Incorporating these decorative elements adds a touch of drama to your style, evoking ornamental and archival narratives. The runway showcases the use of metallics in fabrics, providing a soft shimmer that elevates the overall look. Fabrics with a metallic finish are a key trend, offering a sophisticated and glamorous touch to any outfit. Embrace the richness of pattern-rich designs and metallic details to make a statement with your fashion choices.



NEARLY NUDE



COLLECTION://

003-RR-00541 Overlock edge metalic mesh bodysuit

003-RR-00541 Overlock edge metalic mesh underwired bra

003-RR-00539 Overlock edge metalic mesh tanga

FABRIC DIRECTION

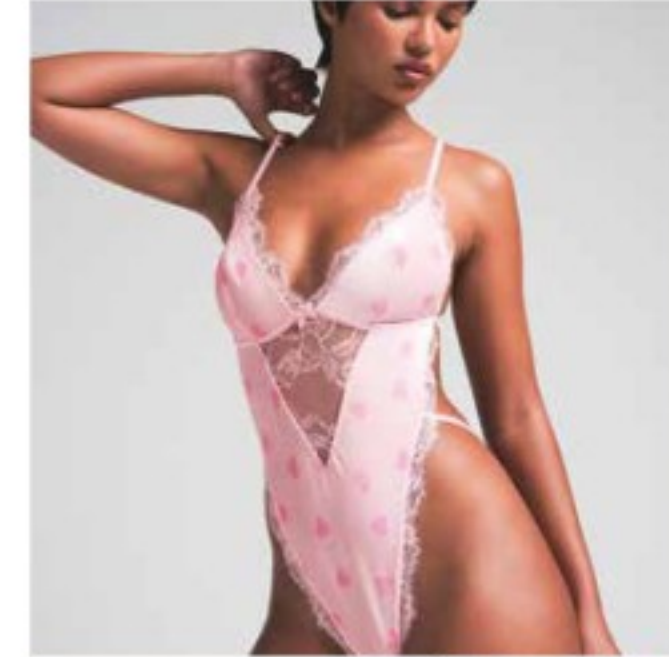
Metallic Fabric

87% Polyamide

13% Silver Metallic yarn



CREATIVE DIRECTION





FOREVER STRETCH

003-RR-00486 Allover lace top
003-RR-00487 Allover lace off shoulder dress
003-RR-00484 Allover lace bodysuit
003-RR-00485 Allover lace high apex triangle
003-RR-00488 Allover lace wired demi
003-RR-00489 Allover lace brazilian



ANIMAL INSTINCT

003-RR-00520 Satin & hand cut lace teddy
003-RR-00517 Satin & hand cut lace wire bra
003-RR-00518 Satin & hand cut crop
003-RR-00519 Satin french knickers



LEOPARD EMBROIDERY

003-RR-00534 Underwire bra
003-RR-00536 Brazilian
003-RR-00537 Thong
003-RR-00538 Slipdress



VINTAGE ROSE

003-RR-00549 Underwire Balcony Bra
003-RR-00550 String Brief
003-RR-00548 Cami Top



NOCTURNAL ROMANCE

003-RR-00512 Peek-a-boo Bralette
003-RR-00513 Crotchless Tanga Brief
003-RR-00514 Babydoll
003-RR-00515 Off shoulder long sleeve top
003-RR-00516 Shorts



NEARLY NUDE

003-RR-00541 Overlock edge metallic mesh bodysuit
003-RR-00541 Overlock edge metallic mesh underwired bra
003-RR-00539 Overlock edge metallic mesh tanga



GYPSY ROSE

003-SS-00042 Spot mesh with eyelash galloon bodysuit
003-SS-00041 Spot mesh with eyelash galloon underwired bra
003-SS-00044 Spot mesh with eyelash galloon tanga
003-SS-00043 Spot mesh with eyelash galloon long robe

