

# LAYERED FRAMES

Secrets of **Feminine fit** style

## The concept

### **Feminine fit . Light . Support**

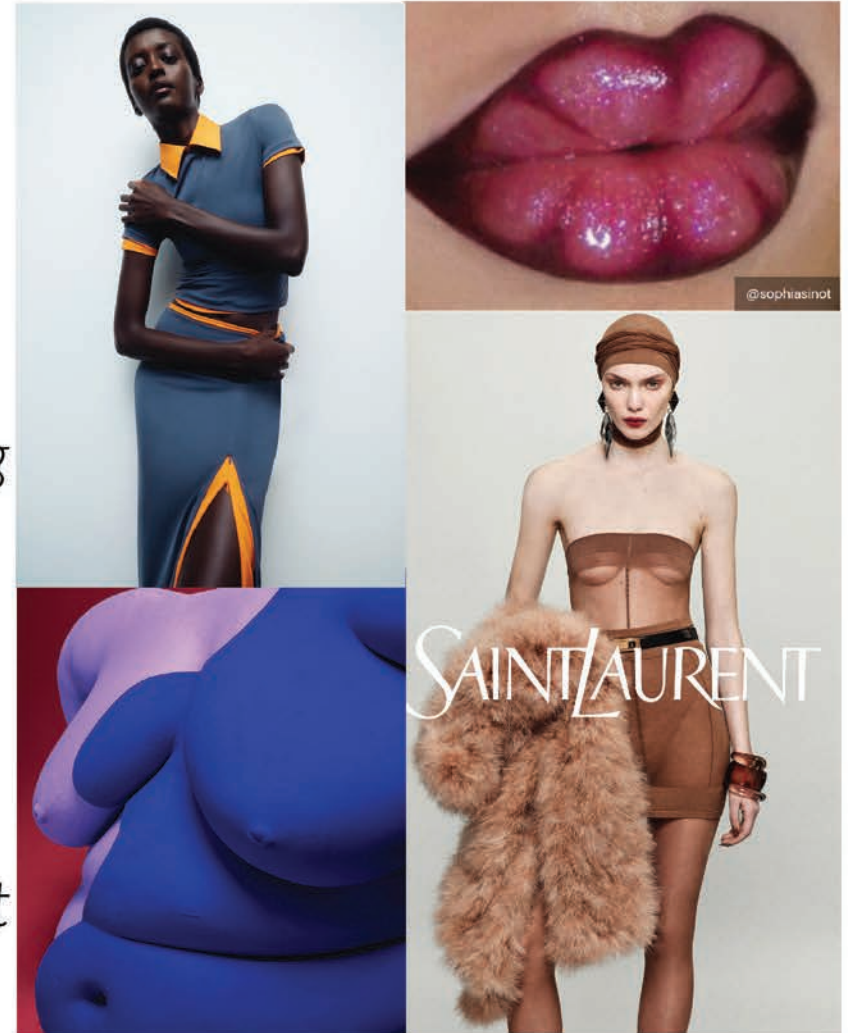
Introducing the layered frames to give functional support with feminine fit.

Double layers , sheer paneling to create the illusionary effect through contrast materials is a powerful tool for enhancing aesthetic appeal.

## Design direction

Layered effects can also be achieved with lasercut and cutout features.

Use this as an opportunity to pair different materials, finishes and colors.



# MODERN LAYERS RANGE LAYERED FRAMES PRODUCT DESCRIPTION

002-RR-00056 (34B)

Scoopneck wired bra with bonded dot glue wing



## Materials:

Creora Powerfit clean cut soft micro  
61% Nylon, 39% Spandex

Sheer mesh

89.8% Nylon, 10.2% Spandex

## Features:

- Bonded neckline for smooth support
- Bonded dot glue front panel & wing for smooth and comfort support
- Bonded H&E for adjustment & delicate look
- Sugar Glitter plus Heat Transfer Patch

**FLOW**

002-RR-00057 (40DD)

Padded wireless bra with bonded laced back



## Materials:

Creora Powerfit clean cut soft micro  
61% Nylon, 39% Spandex

Sheer mesh

89.8% Nylon, 10.2% Spandex

## Features:

- Bonded neckline for smooth support
- Bonded dot glue front panel & wing for smooth and comfort support
- Bonded H&E for adjustment & delicate look
- Sugar Glitter plus Heat Transfer Patch

**FLOW**

002-RR-00067 (S & 2XL)

No VPL Bonded Tanga Panty



## Materials:

Creora Powerfit clean cut soft micro  
61% Nylon, 39% Spandex

Sheer mesh

89.8% Nylon, 10.2% Spandex

## Features:

- Bonded waist & front mesh insert
- No VPL leg opening
- Sugar Glitter plus Heat Transfer Patch

**FLOW**

Creora Powerfit fabric which is same quality of Feminine Fusion range  
Creora PowerFit is Hyosung spandex yarn  
(Please see the Hyosung's leaflet for details)

Feminine Fusion

creora  
its in our every fiber

**Creora Powerfit Clean Cut Soft Micro**

creora® Power Fit, from Hyosung's flagship high-power spandex portfolio, offers exceptional stretch and recovery that enhances both fit and comfort in our Feminine Fusion pieces.

**Enhanced Fabric Power**

Fabrics engineered with creora® Power Fit deliver enhanced fabric power even when applied to different companion yarn types, providing greater shape-holding capability than competitor spandex.

**Based on Nylon**  
+7% vs competitor

Technical icons: ACTIVE STRETCH, SUPERIOR SHAPING, COMFORT.

Product tags: Power Fit, CREORA spandex, HYOSUNG.

# MODERN LAYERS RANGE LAYERED FRAMES PRODUCT DESCRIPTION

## 002-RR-00032 (34B)

Sheer wired balcony bra with engineered band



### Materials:

Sheer Micro

73% Polyamide, 27% spandex

Engineered band

81% Nylon, 19% Spandex

### Features:

- Sheer cup for smooth support
- Decorative Metal buckle with hook for cross-back look



- Sugar Glitter plus Heat Transfer Patch

**FLOW**

## 002-RR-00054 (40DD)

Sheer wired balcony bra with engineered band and hidden side support



### Materials:

Sheer Micro

73% Polyamide, 27% spandex

Engineered band

81% Nylon, 19% Spandex

### Features:

- Sheer cup for smooth support
- Hidden side sling for side support
- Decorative Metal buckle with hook for cross-back look



- Sugar Glitter plus Heat Transfer Patch

## 002-RR-00066 (S & 2XL)

Bonded cheeky panty with engineered band



### Materials:

Sheer Micro

73% Polyamide, 27% spandex

Engineered band

81% Nylon, 19% Spandex

### Features:

- Bonded waist & leg opening for No VPL
- Sugar Glitter plus Heat Transfer Patch

**FLOW**