

# LAYERED FRAMES

Secrets of **Feminine fit** style

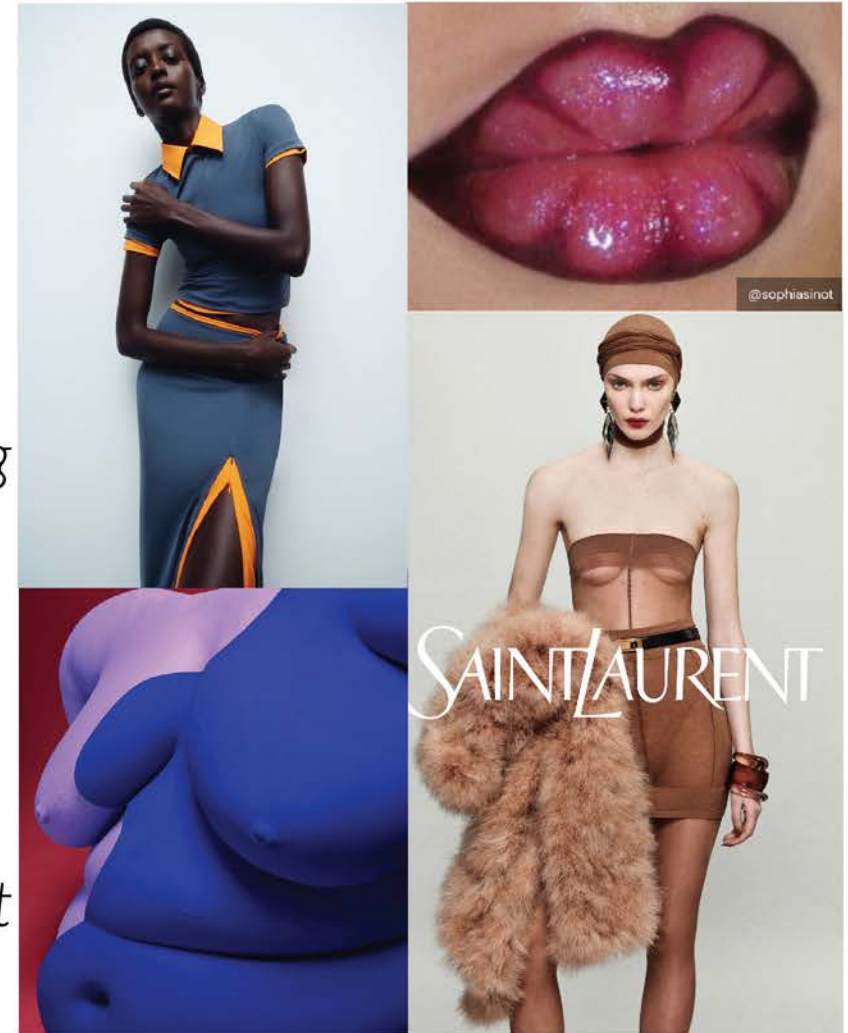
## The concept

### **Feminine fit . Light . Support**

Introducing the layered frames to give functional support with feminine fit. Double layers , sheer paneling to create the illusionary effect through contrast materials is a powerful tool for enhancing aesthetic appeal.

## Design direction

Layered effects can also be achieved with lasercut and cutout features. Use this as an opportunity to pair different materials, finishes and colors.

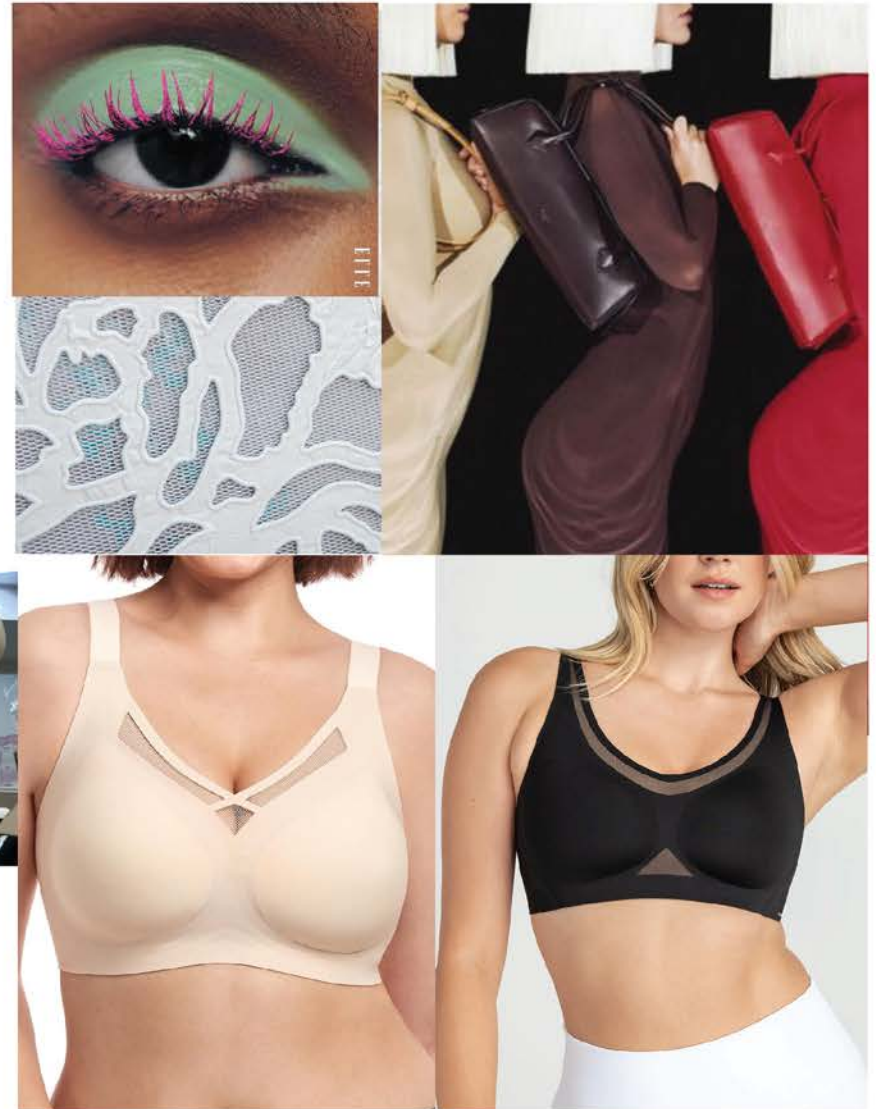


# LAYERED FRAMES

Secrets of *Feminine fit* style

## Materials

- Luxurious fabrics like soft silky and glossy fabrics
- Sheen mesh & leather look micro
- Lightweight 4-ways allover lace
- Engineered Lace
- Raw cut elastic
- Metallic accents and hardware

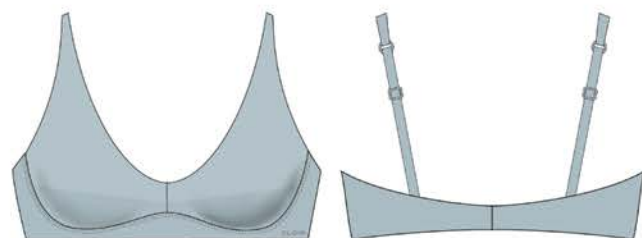




QUIET LUXURY RANGE

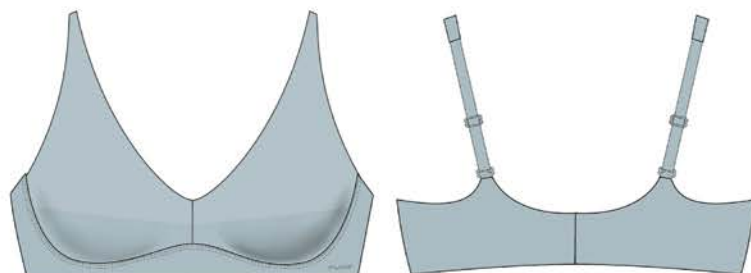
# LAYERED FRAMES

Secrets of Feminine fit style



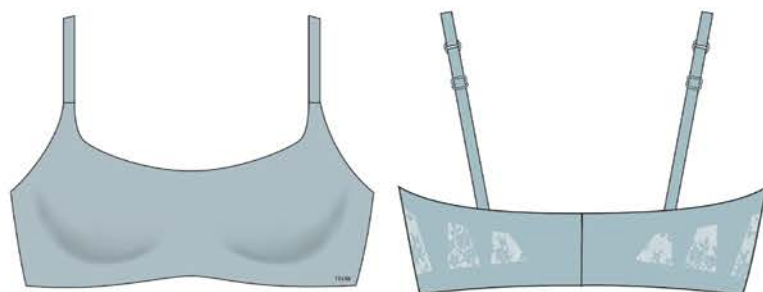
002-RR-00028 (34B)

Minimizer with raw cut elastic



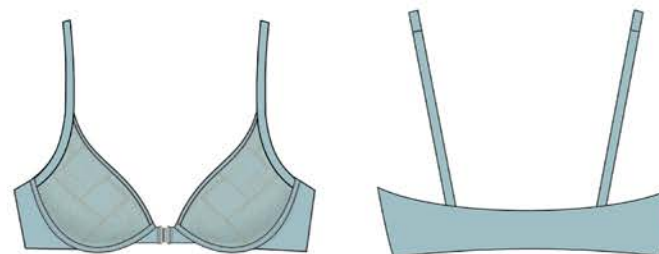
002-RR-00029 (40DD)

Minimizer with raw cut elastic



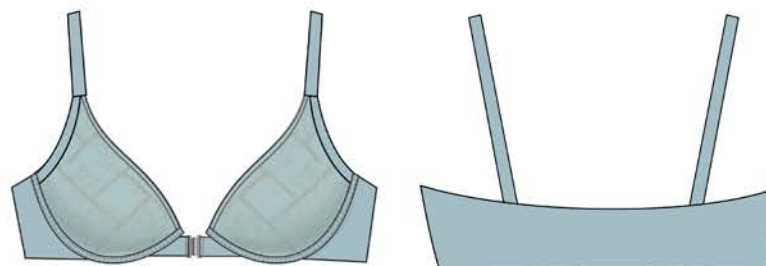
002-RR-00025 (40DD)

Padded wireless with bonded laced back



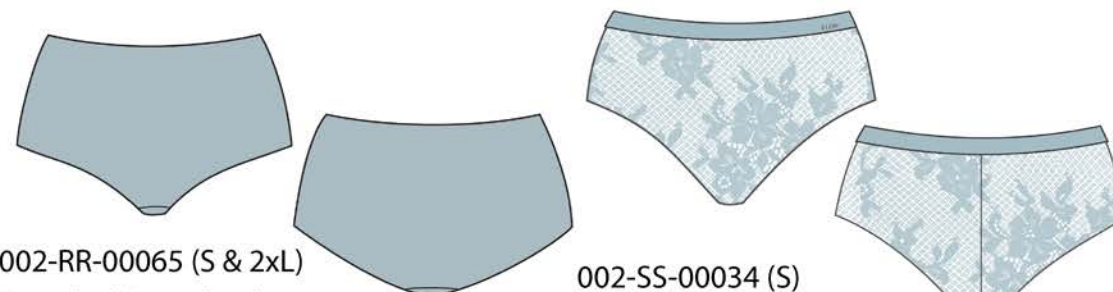
002-QQ-00097A (34B)

Reversible front closure wired bra



002-RR-00060 (40DD)

Reversible front closure wired bra



002-RR-00065 (S & 2xL)

Bonded Boyshorts

002-SS-00034 (S)

002-SS-00035 (2XL)

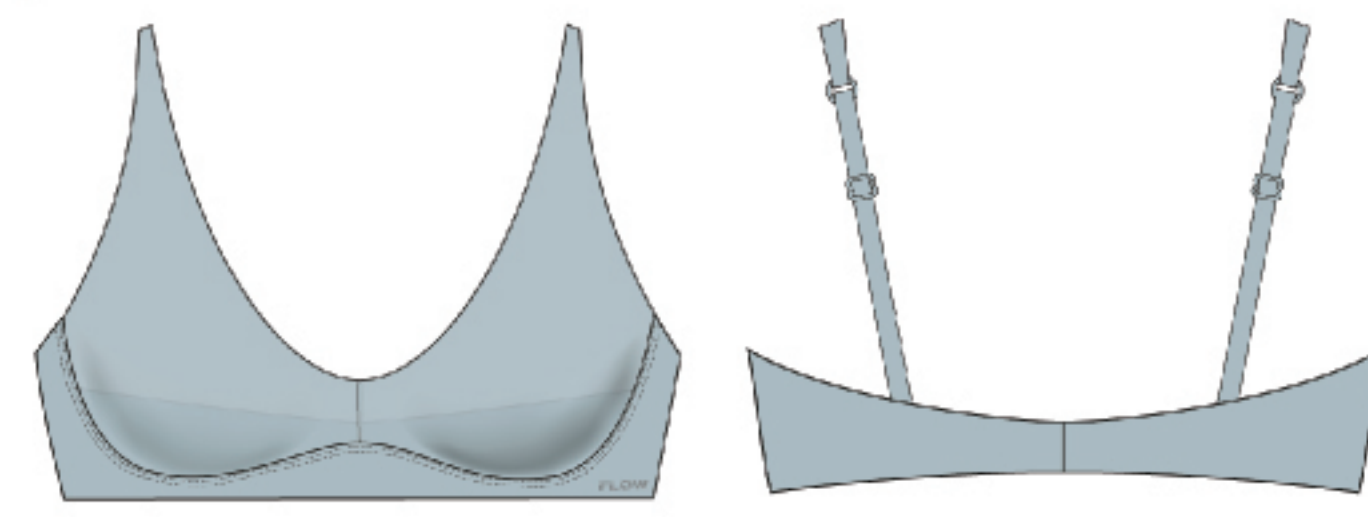
Laced cheeky panty



# QUIET LUXURY RANGE LAYERED FRAMES PRODUCT DESCRIPTION

## 002-RR-00028(34B)

Natural uplift wirelss with raw cut elastic inside



### Materials:

Creora Powerfit clean cut soft micro  
61% Nylon, 39% Spandex

Soft Raw cut elastic  
89% Nylon 11% Elastane

### Features:

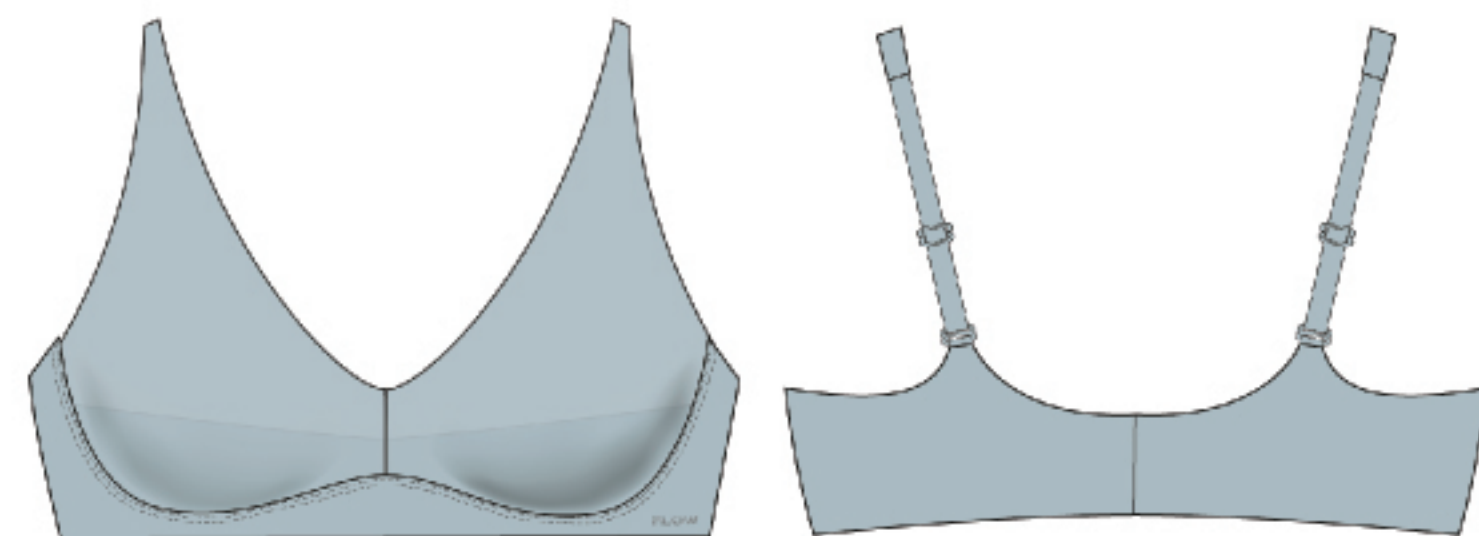
- Soft raw cut elastic for natural uplift support
- Silicone printed front neckline, cradle & wing for smooth support
- Hidden Bonded H&E for adjustment & no show under clothes
- Sugar Glitter plus Heat Transfer Patch

**\*Please remember to take a side view pic to indicate the natural uplift support**

FLOW

## 002-RR-00029 (40DD)

Natural uplift wirelss with raw cut elastic inside



### Materials:

Creora Powerfit clean cut soft micro  
61% Nylon, 39% Spandex

Soft Raw cut elastic  
89% Nylon 11% Elastane

### Features:

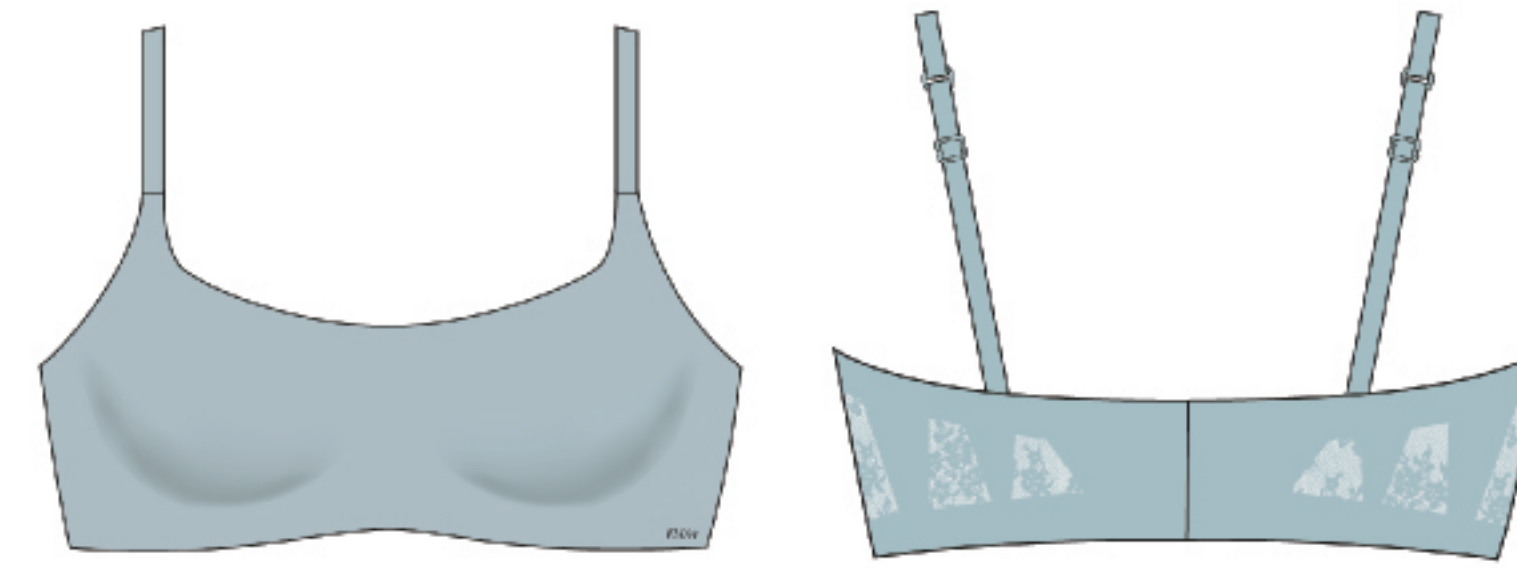
- Soft raw cut elastic for natural uplift support
- Silicone printed front neckline, cradle & wing for smooth support
- Hidden Bonded H&E for adjustment & no show under clothes
- Sugar Glitter plus Heat Transfer Patch

**\*Please remember to take a side view pic to indicate the natural uplift support**

FLOW

## 002-RR-00025 (40DD)

Padded wireless bra with bonded laced back



### Materials:

Creora EasyFlex allover lace  
80% Nylon, 20% Creora EasyFlex

Recycled clean cut Interlock  
76% Pre-consumer Recycled Nylon, 24% Spandex

Comfort one-piece soft pad

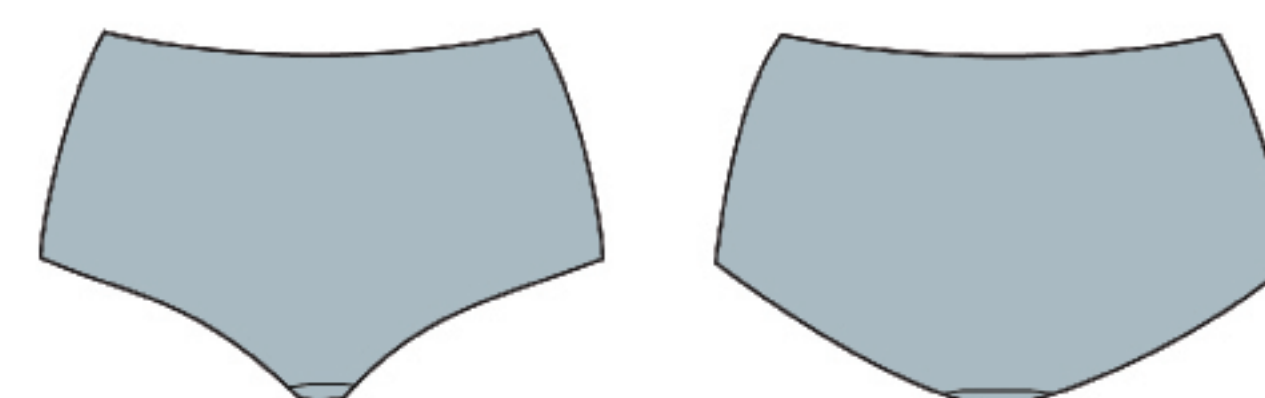
### Features:

- Soft, smooth and wirefree comfort cup
- Seamless bonded wing for smooth support
- Hidden Bonded H&E for adjustment & no show under clothes
- Sugar Glitter plus Heat Transfer Patch

FLOW

## 002-RR-00065(S & 2XL)

Bonded Boyshorts



### Materials:

Free cut **Sunchill** micro  
74% Nylon, 26% Spandex

### Features:

- No VPL Bonded waist & leg opening
- Sugar Glitter plus Heat Transfer Patch

FLOW

Creora Powerfit fabric which is same quality of Feminine Fusion range  
Creora PowerFit is Hyosung spandex yarn  
(Please see the Hyosung's leaflet for details)

Feminine Fusion



**Creora Powerfit Clean Cut Soft Micro**

creora® Power Fit, from Hyosung's flagship high-power spandex portfolio, offers exceptional stretch and recovery that enhances both fit and comfort in our Feminine Fusion pieces.

**Enhanced Fabric Power**

Fabrics engineered with creora® Power Fit deliver enhanced fabric power even when applied to different companion yarn types, providing greater shape-holding capability than competitor spandex.

**Based on Nylon**  
+7% vs competitor

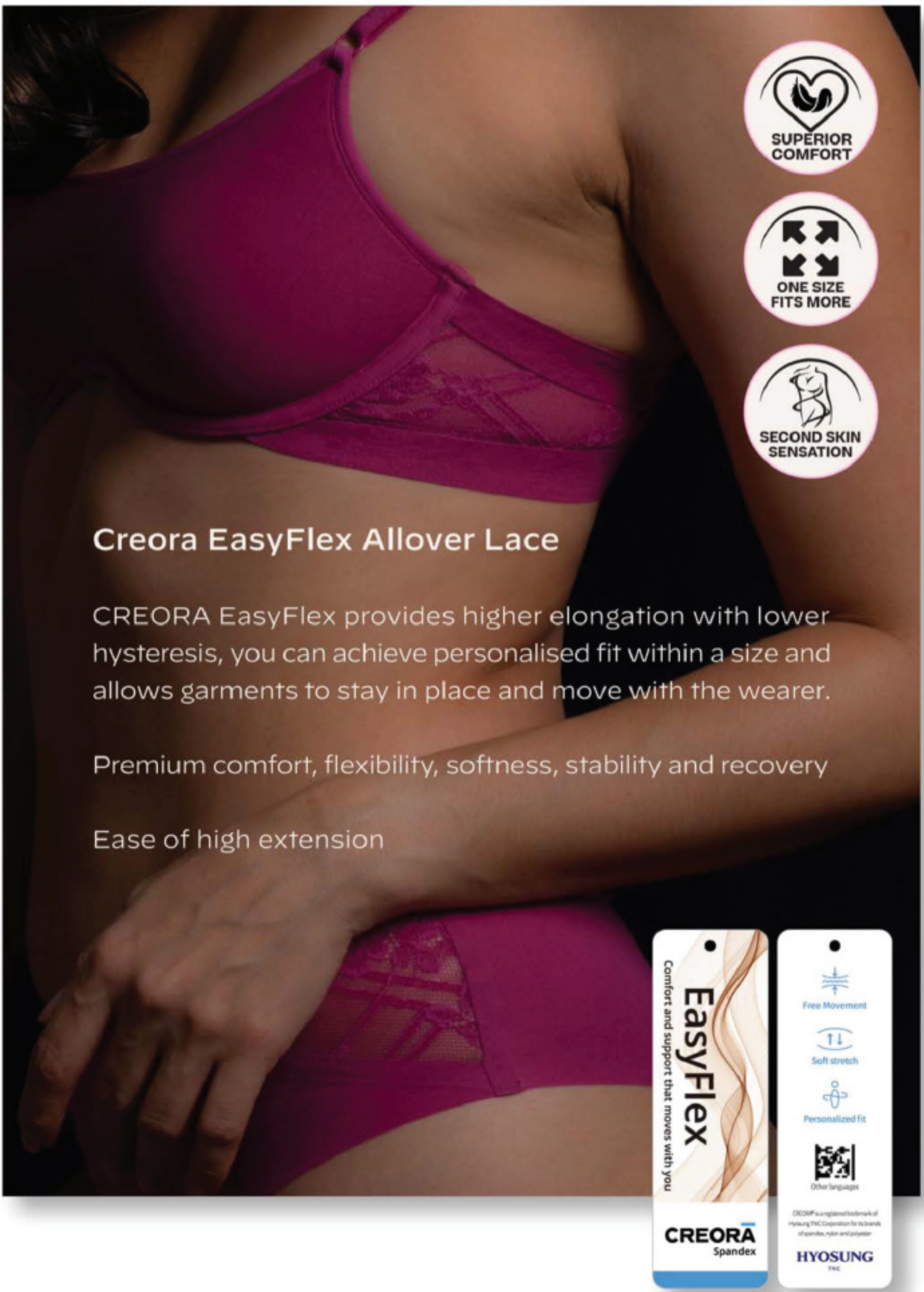


QUIET LUXURY RANGE  
**LAYERED FRAMES** PRODUCT DESCRIPTION

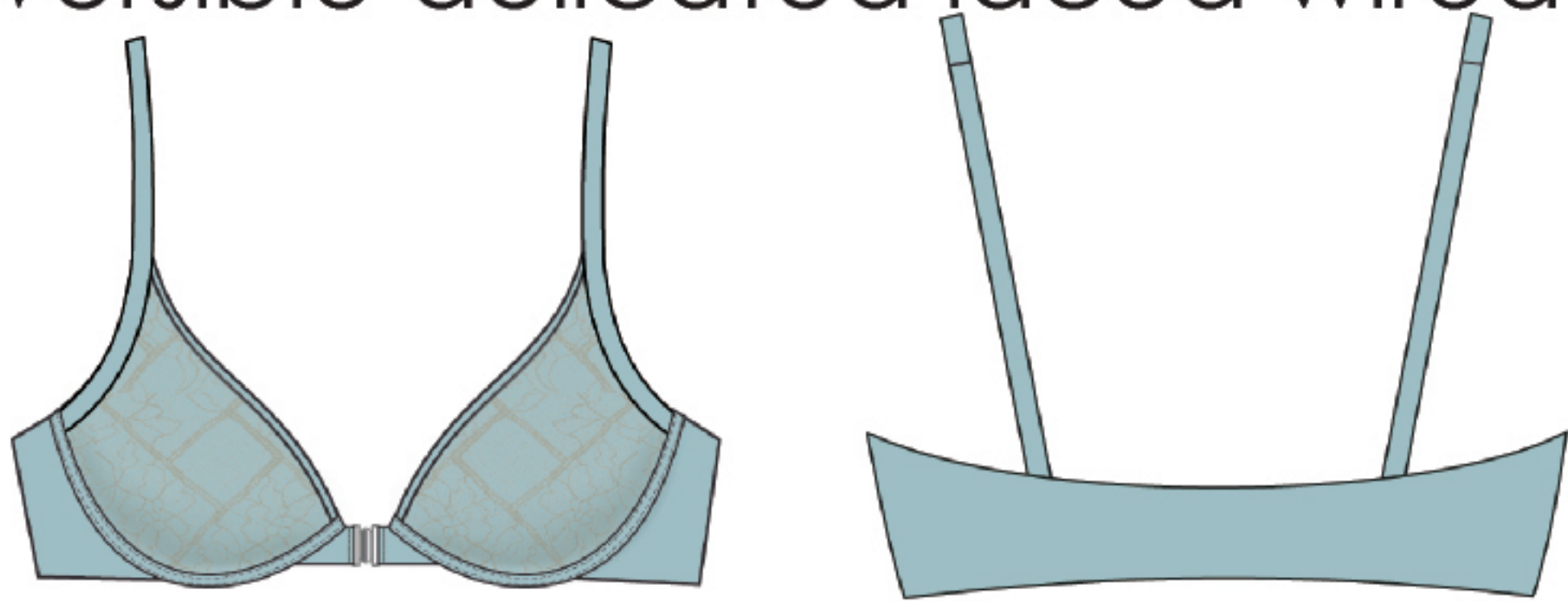
Creora EasyFlex allover lace which is same quality of Feminine Fusion range  
Creora EasyFlex is Hyosung spandex yarn  
(Please see the Hyosung's leaflet for details)



Feminine Fusion **CREORA** EasyFlex



**002-QQ-00097A (34B)**  
Reversible delicated laced wired bra



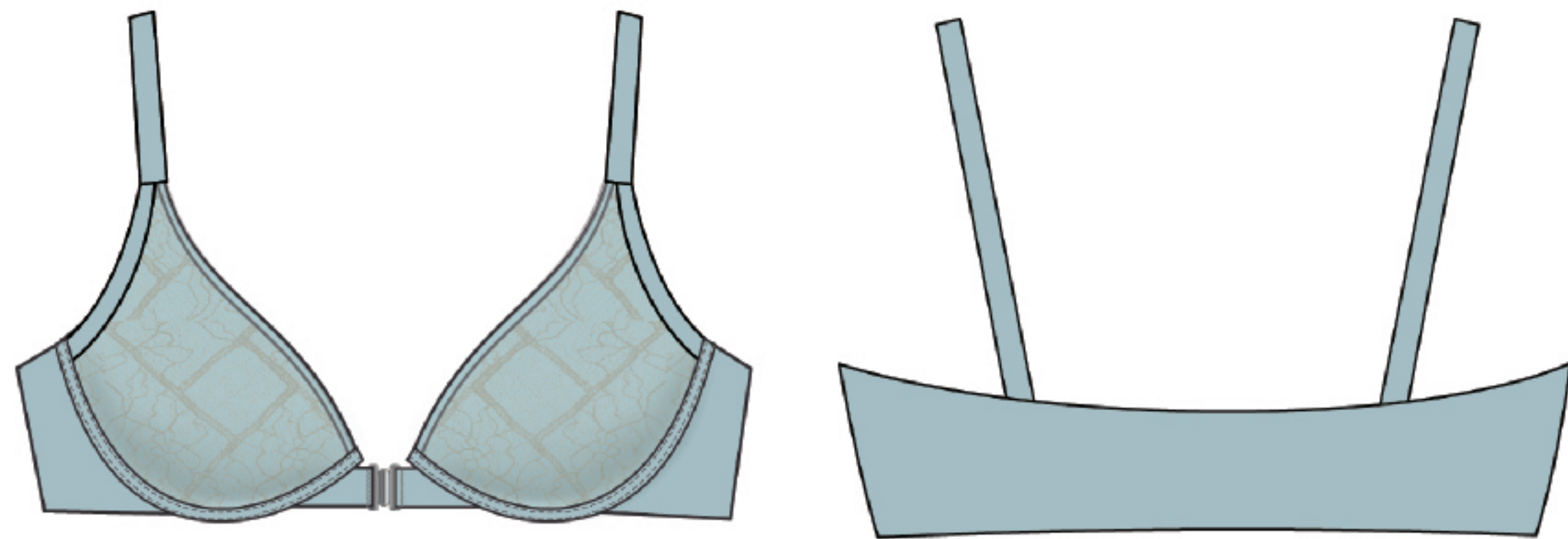
**Materials:**  
Creora EasyFlex allover lace  
80% Nylon, 20% Creora EasyFlex

Free cut **Sunchill** micro  
74% Nylon, 26% Spandex

- Features:**
- Can be worn both sides (Lace or micro)
  - Creora Easyflex allover lace for comfort fit
  - Bonded cup neckline and front strap for better smooth support

**\*Please remember to take a close up pic to show both cup sides (Lace & Micro)**

**002-RR-00060(40DD)**  
Reversible delicated laced wired bra



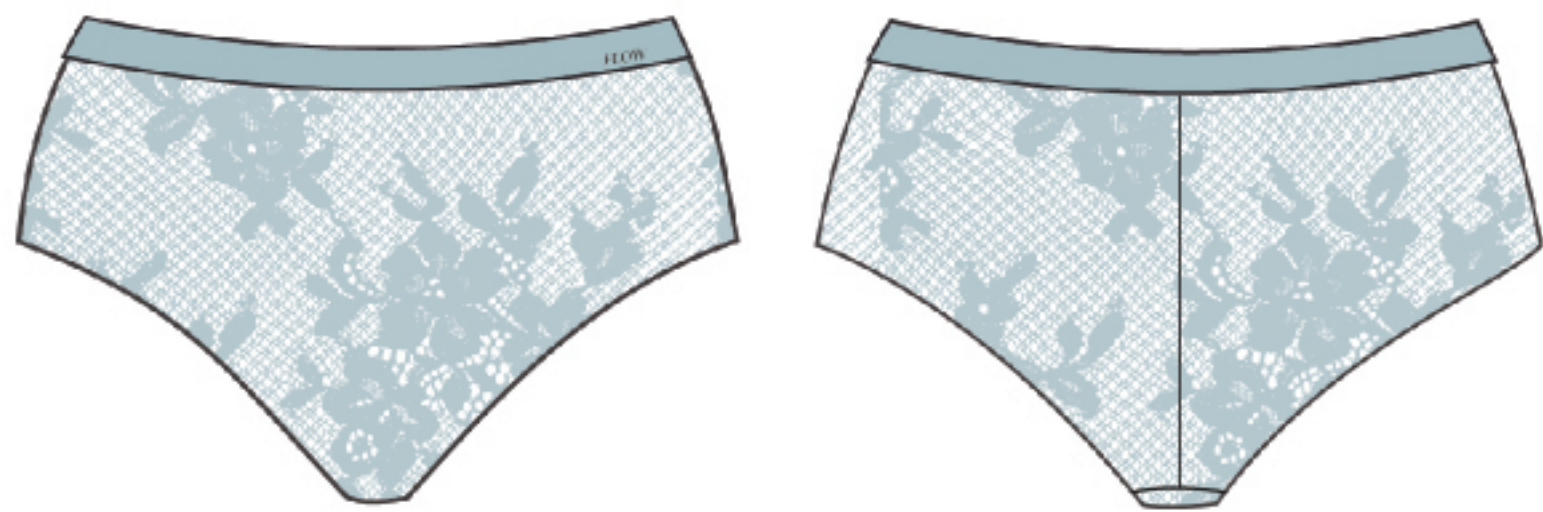
**Materials:**  
Creora EasyFlex allover lace  
80% Nylon, 20% Creora EasyFlex

Free cut **Sunchill** micro  
74% Nylon, 26% Spandex

- Features:**
- Can be worn both sides (Lace or micro)
  - Creora Easyflex allover lace for comfort fit
  - Bonded cup neckline and front strap for better smooth support

**\*Please remember to take a close up pic to show both cup sides (Lace & Micro)**

**002-SS-00034 (S)**  
**002-SS-00035 (2XL)**  
Laced cheeky panty



**Materials:**  
Creora EasyFlex allover lace  
80% Nylon, 20% Creora EasyFlex

Free cut **Sunchill** micro  
74% Nylon, 26% Spandex

- Features:**
- Creora Easyflex allover lace for comfort fit