

# SWIM RESORT SS 2027





# Runway Forecast

Prints & Material

# SS27 KEY TO THE SEASON

## #1 BOHEMIAN



## #2 CLUB HOUSE



## #3 WILD WEST



# SS27 KEY TO THE SEASON

## #4 COASTAL CHIC



## #5 SWEET ROMANCE



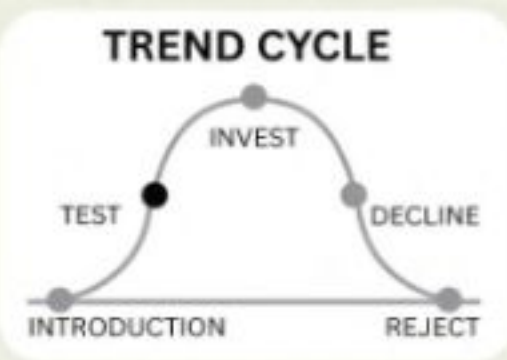
# Suede and Leather



Coastal Bohemia and NuBoheme trends are merging with Western aesthetics, especially in festival swimwear capsules. The direction is to merge #NewRetro and #NuBoheme for a refreshed take on laid-back, youthful, boho festivalwear, with Western-inspired decorative trims and sunbaked, faded colour palettes.



# Tassel Fringing



Fringing is highlighted as a major design strategy for S/S '26, especially in women's wear. Reports recommend investing in fringing to add eye-catching movement and bold design to both classic and new silhouettes. In resortwear, fringing is used to enhance rustic, textural dimensions, such as in macramé overlays for skirts. Reports emphasize its increased prominence on the catwalks and its role in updating dress and skirt styles.



Ferragamo

Ulla Johnson

Giuseppe Di Morabito

Balmain

Michael Kors

Elie Saab

Rosie Assoulin

# Exotic Fusion



The popularity of animal prints in SS27 reflects a broader trend of embracing boldness, individuality, and nature-inspired luxury. While classic leopard has been a highly popular pattern direction when it comes to animal prints, snakeskin is surely becoming the new wild option particularly favored in young contemporary lines.



Elie Saab

Alaïa

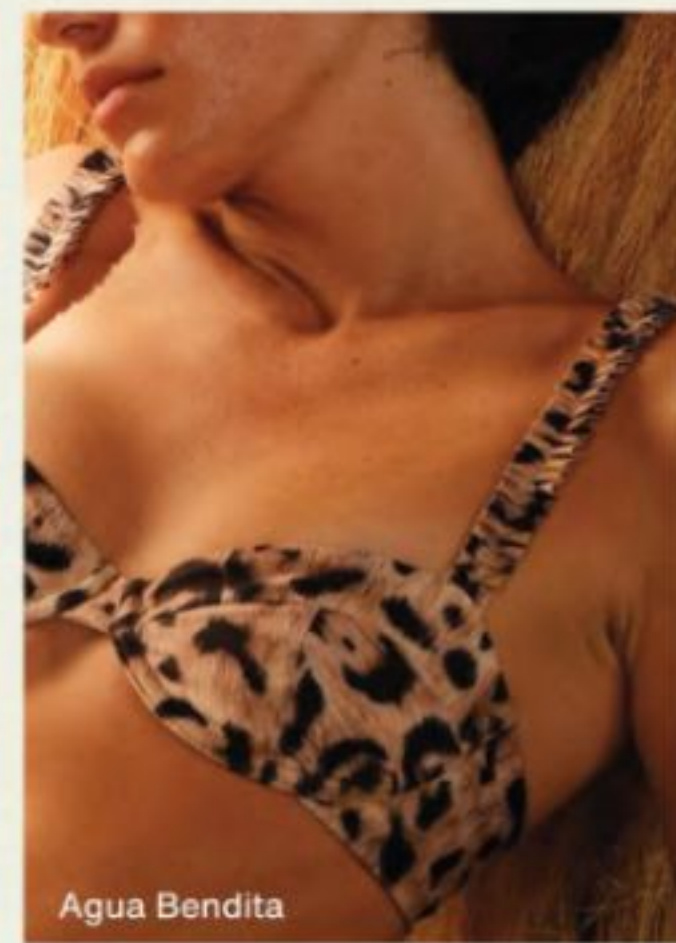
Nina Ricci

Gerragamo

Bluemarine



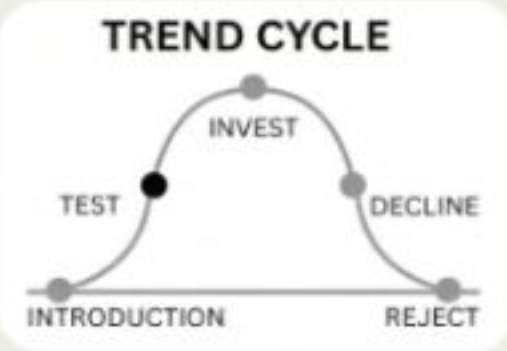
Maria Danilina



Agua Bendita

# noboHEME

#Pasiley #Bandana #Patternclash



The classic paisley returns with a sun-soaked update, transforming from a Western staple to a resort essential. Prints echo the spirit of travel and nostalgia, while bordered motifs, intricate linework, and handkerchief placements are reimagined across bikinis, scarves, and coordinated sets. Earthy browns, ocean blues, and soft neutrals lend a relaxed sophistication, while playful styling keeps it youthful and free.

New Generation Etro

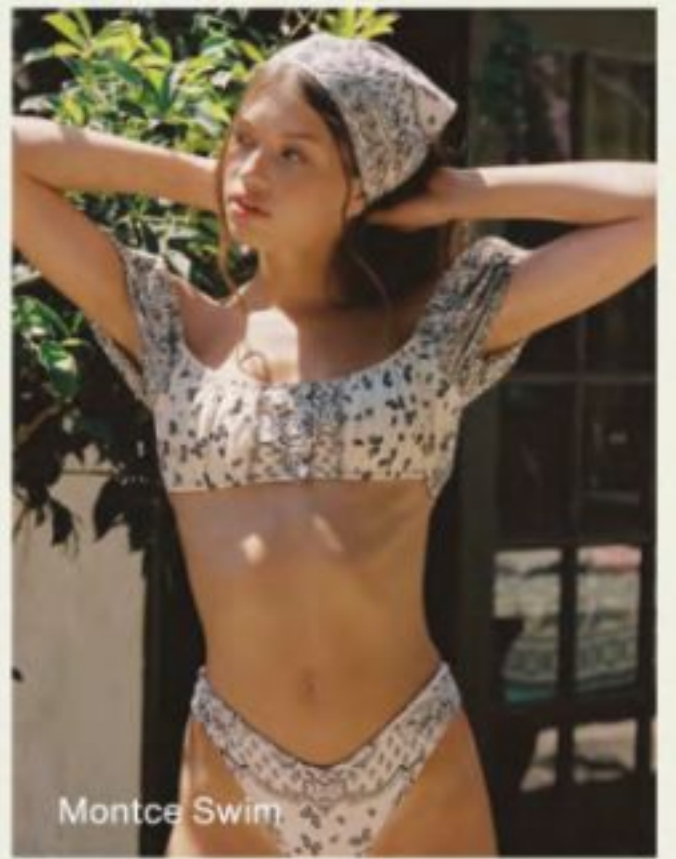
Ermanno Scervino

Miss Bikini

Maaji New Generation



Agua Bendita



Montce Swim

# Eyelet & Openwork



Christian Dior



Isabel Marant



Altuzarra



Be Nina



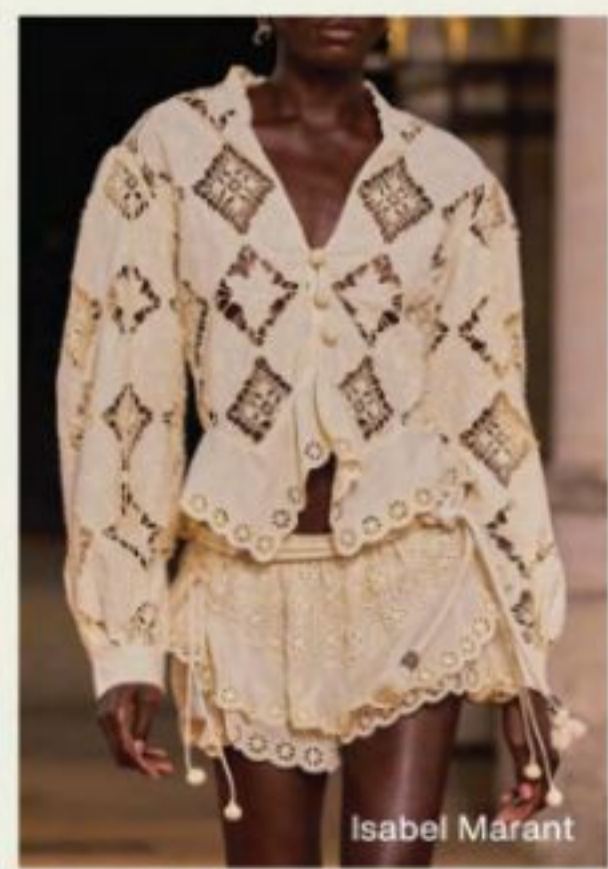
Veronica Beard



Ermanno Scervino



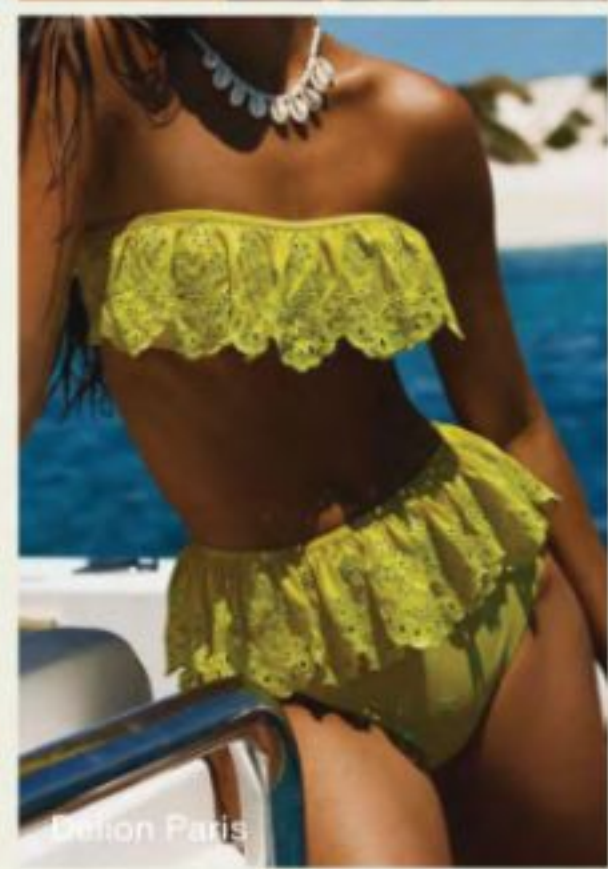
Mango



Isabel Marant



Ulla Johnson



Delion Paris

# Modern Picnic



Checks are a key pattern for S/S 27 swimwear, evolving with crafted, patchwork, and retro influences. Brands should invest in these patterns for both core and fashion-forward swim and resort collections, using sustainable materials and nostalgic colour palettes to meet consumer demand for joyful, meaningful, and versatile design.



Emilia Wickstead

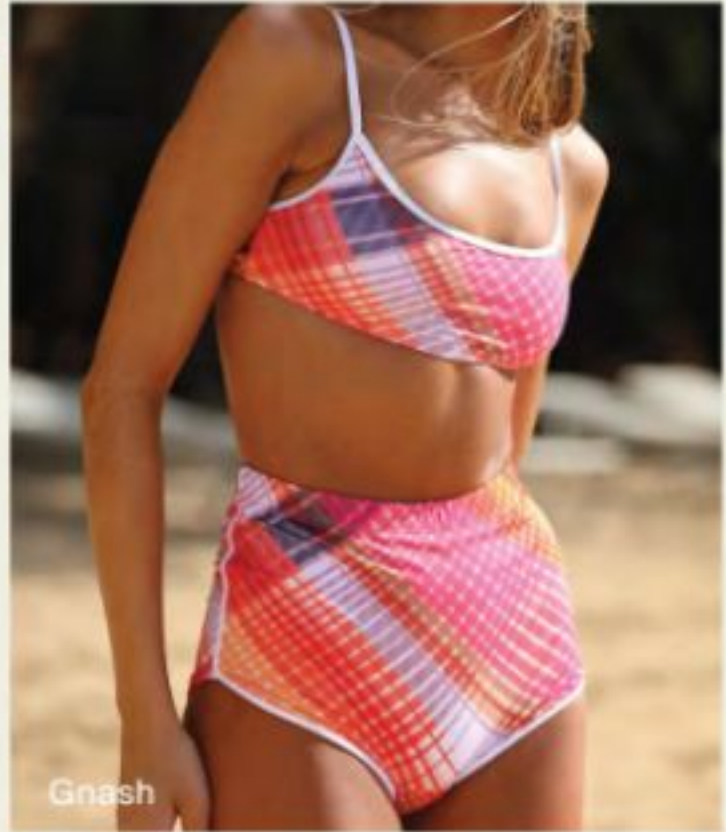
Yuhan Wang

Sandy Liang

House of Aama

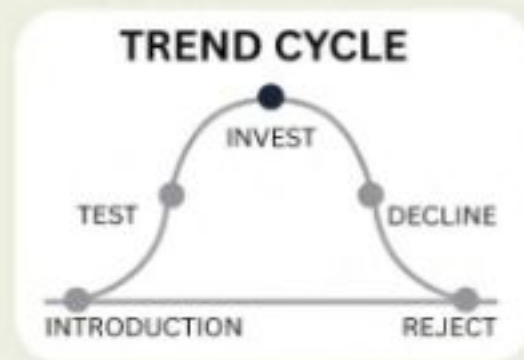
Montce

MOSCHINO



Gnash

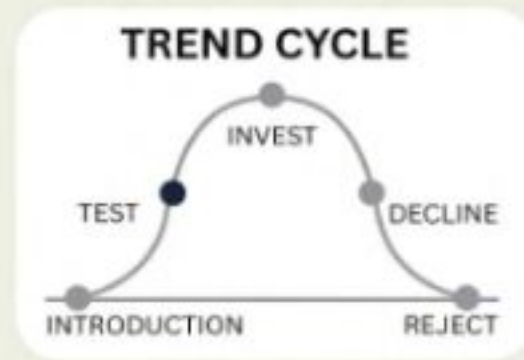
# Toile Papillon



The SS26 runway showcased a collection of models dressed in floral and striped prints reminiscent of classic wallpaper designs, reimagined as stylish swimwear and loungewear. From delicate florals to intricate patterns, these garments exude a romantic, eclectic vibe that appeals to a broad audience seeking unique, statement pieces.



# Painter's Bloom



A new wave of artistic expression washes over swimwear. Brushstroke florals, abstract forms, and color-saturated geometrics evoke a handcrafted freedom that feels both nostalgic and elevated. Layered motifs, softened edges, and sun-washed colors celebrate creativity as escapism, embracing painterly spontaneity and artisanal imperfection as markers of individuality.



Chole

Zimmermann

Ferragamo

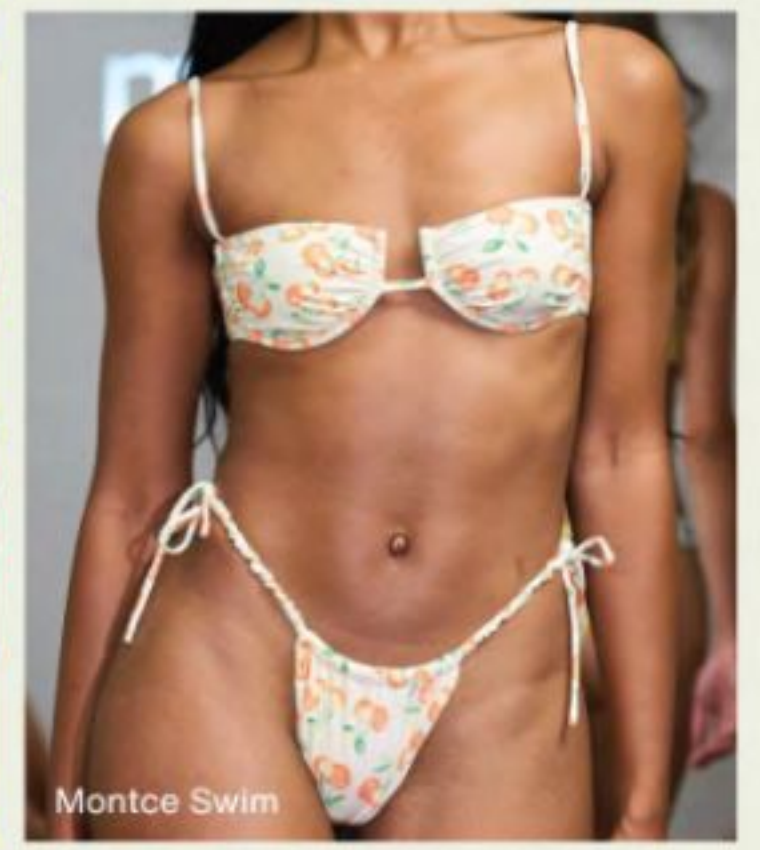
McQueen



# Fruit & Veg



The SS26 runway showcased a collection of models dressed in floral and striped prints reminiscent of classic wallpaper designs, reimagined as stylish swimwear and loungewear. From delicate florals to intricate patterns, these garments exude a romantic, eclectic vibe that appeals to a broad audience seeking unique, statement pieces.



Triya

Maaji

Sigal

Seafolly

Montce Swim

# Sunkissed Stripe

Sun-faded stripes return with a refined ease, inspired by neutral shirting and tailored simplicity. Washed neutrals, ocean blues, and retro spice tones bring depth and warmth to the palette. This story redefines the classic stripe through a lens of quiet luxury, effortless, grounded, and timelessly composed.



Tod's

Dolce & Gabbana

Zankov

Zomer



Solid & Striped



Str



Soleil Soleil



Triangl

# Dot Revival

Polkadots make a playful return, balancing vintage charm with quiet sophistication. Scaled spots, spaced rhythms, and sun-faded tones breathe new life into this timeless print. The look moves between coquettish and classic, pairing structured cuts with soft nostalgia.

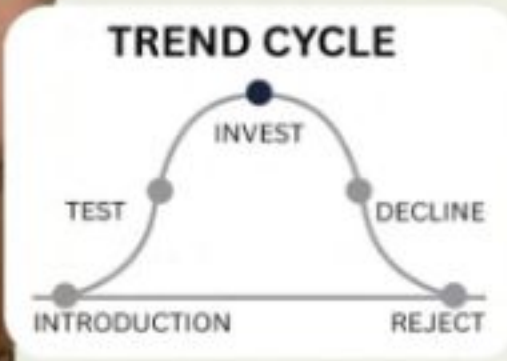


Ermanno Scervino

Nina Ricci

Alessandro Enriquez

Leonard Paris



Juillet



Fella



Same



Away that day

# 3D Texture

Polkadots make a playful return, balancing vintage charm with quiet sophistication. Scaled spots, spaced rhythms, and sun-faded tones breathe new life into this timeless print. The look moves between coquettish and classic, pairing structured cuts with soft nostalgia.



Pat Bo

Fendi

Ulla Johnson

Altuzarra

Khaite



Beach Bunny



Thaikila



Interrillere Paris



Ancora

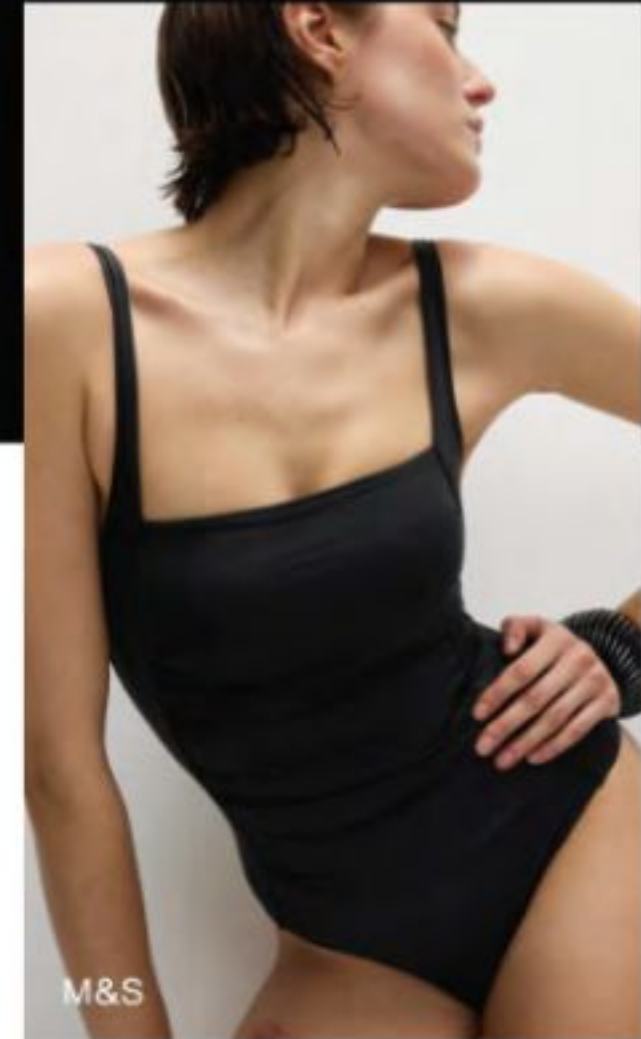
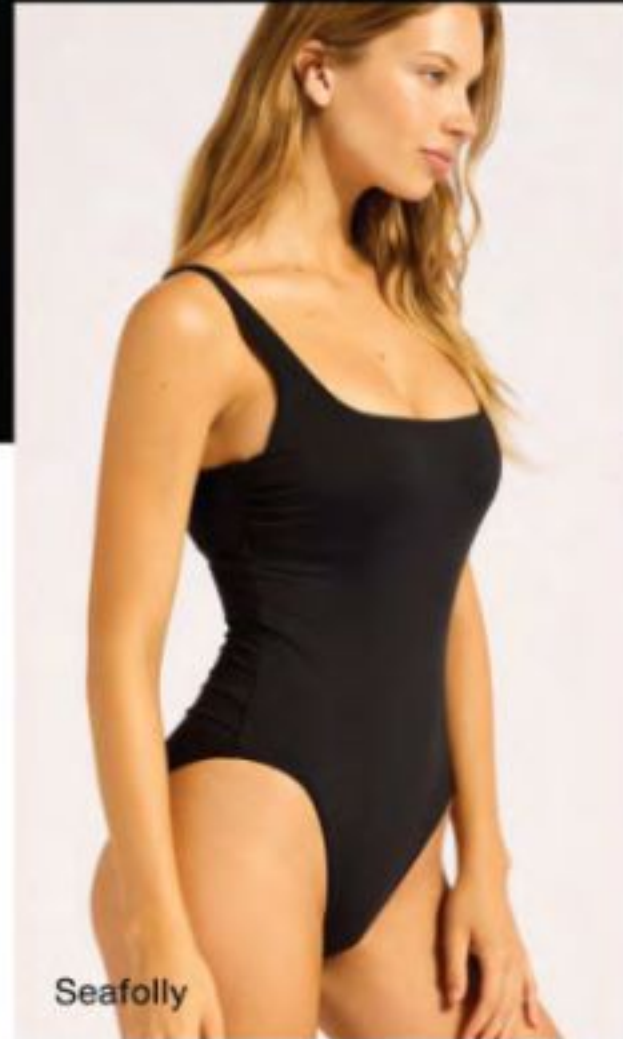
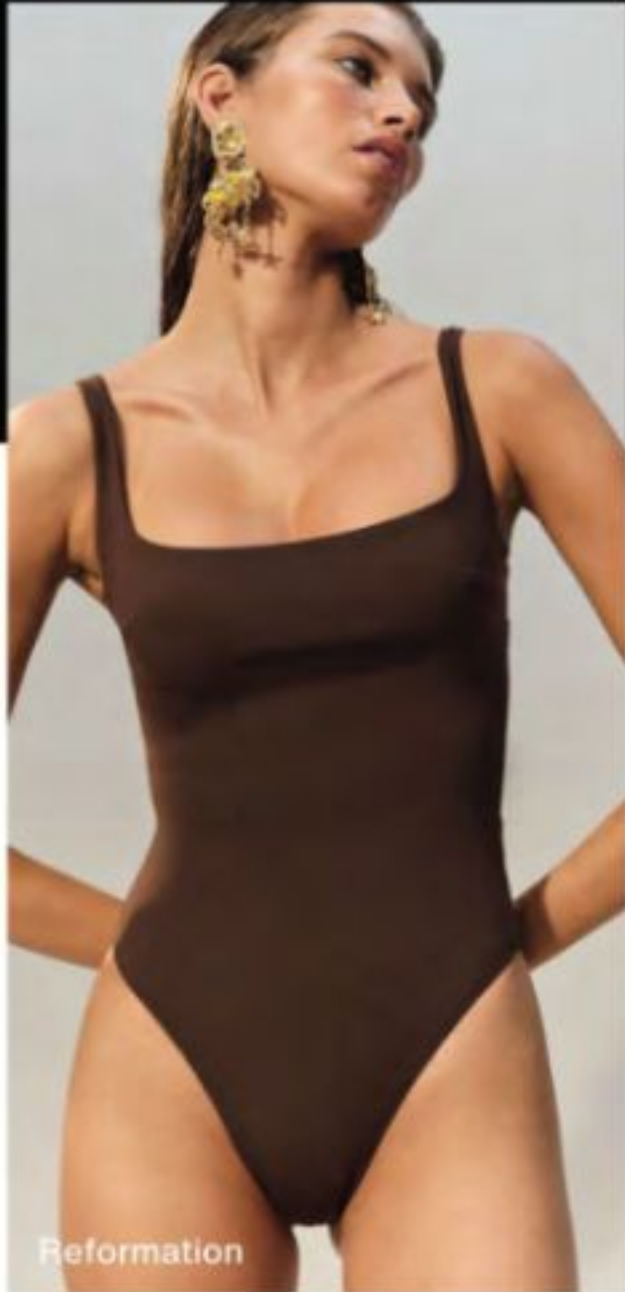


# Must Have & Emerging

Key Shape

# MUST HAVE KEY SHAPE

## Square Neck Swimsuit

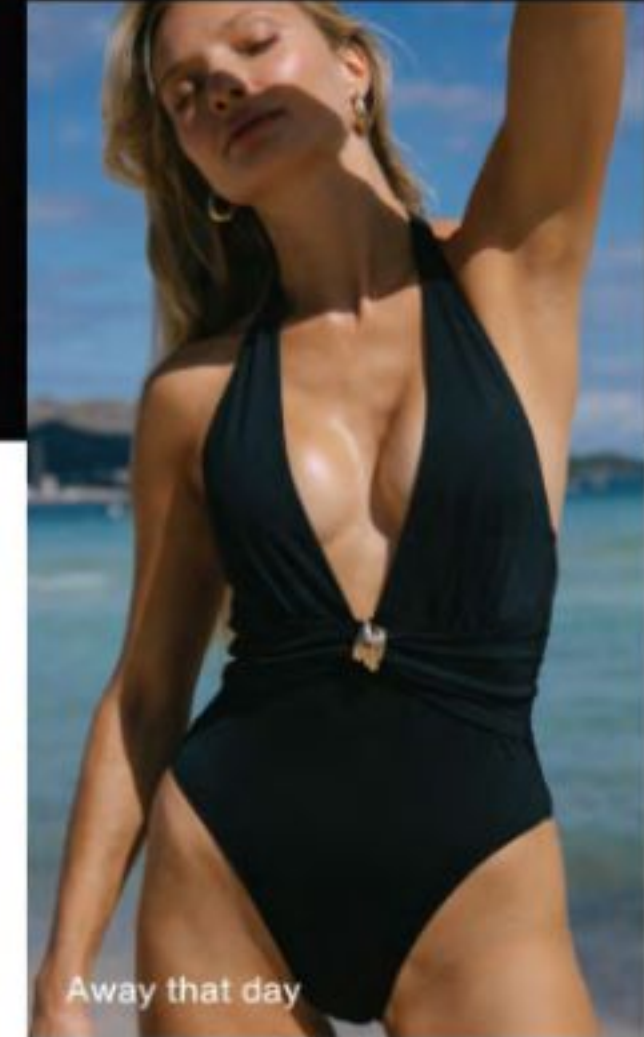
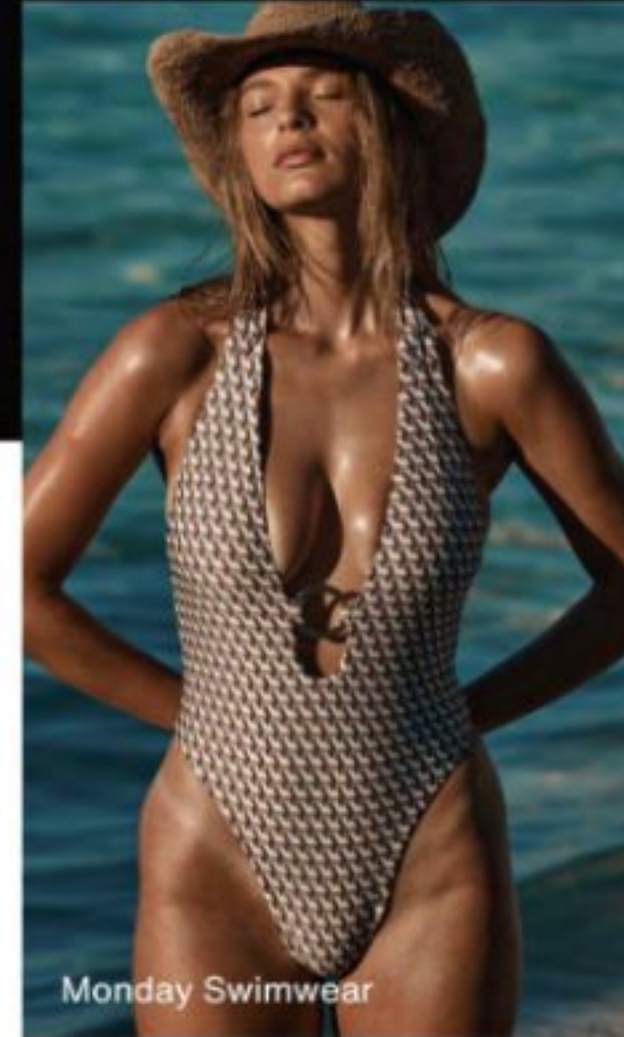
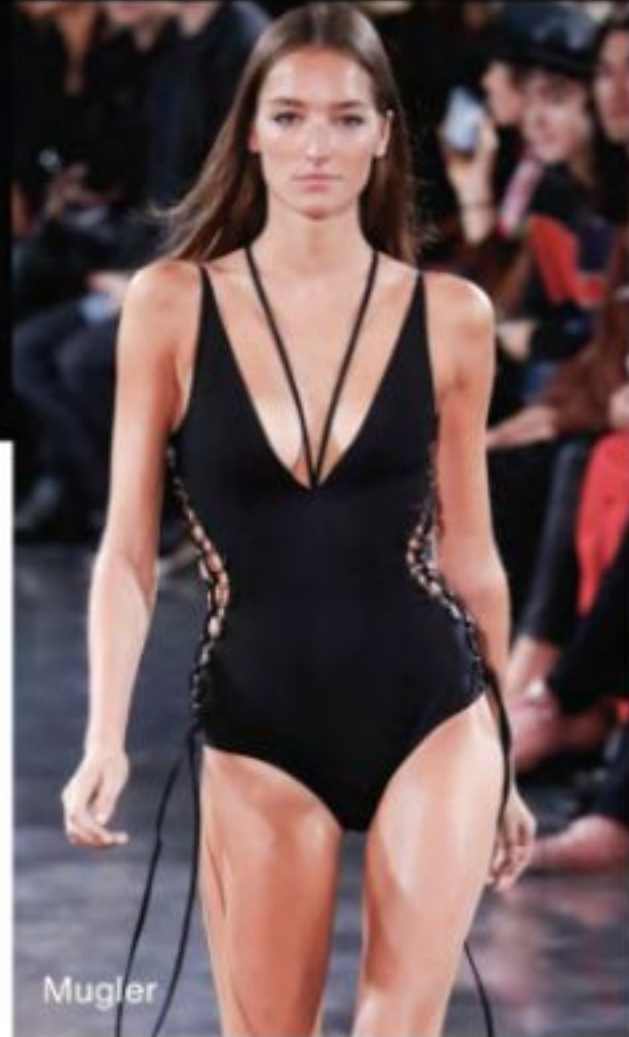


### Why it's a Commercial Must-Have

- The square neckline offers an excellent fit for fuller bust sizes, featuring supportive inner construction and a stable neckline design that enhances both comfort and aesthetics.
- Elevated simplicity and timeless design make this piece suitable for both mass-market and premium brands that prioritize durability over fleeting trends.

# MUST HAVE KEY SHAPE

## Plunge V Neck Swimsuit

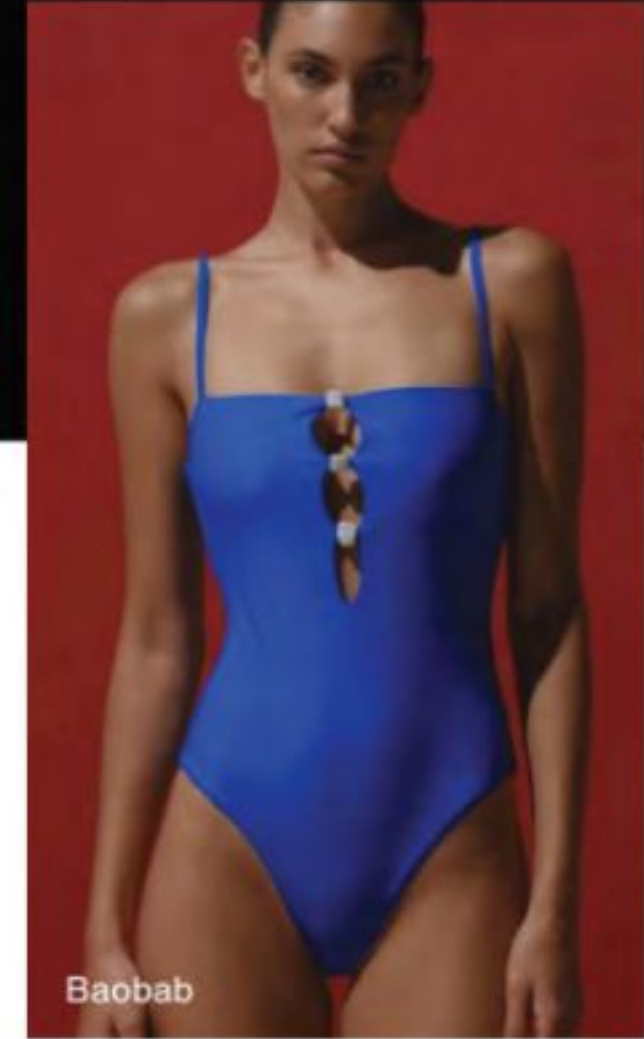
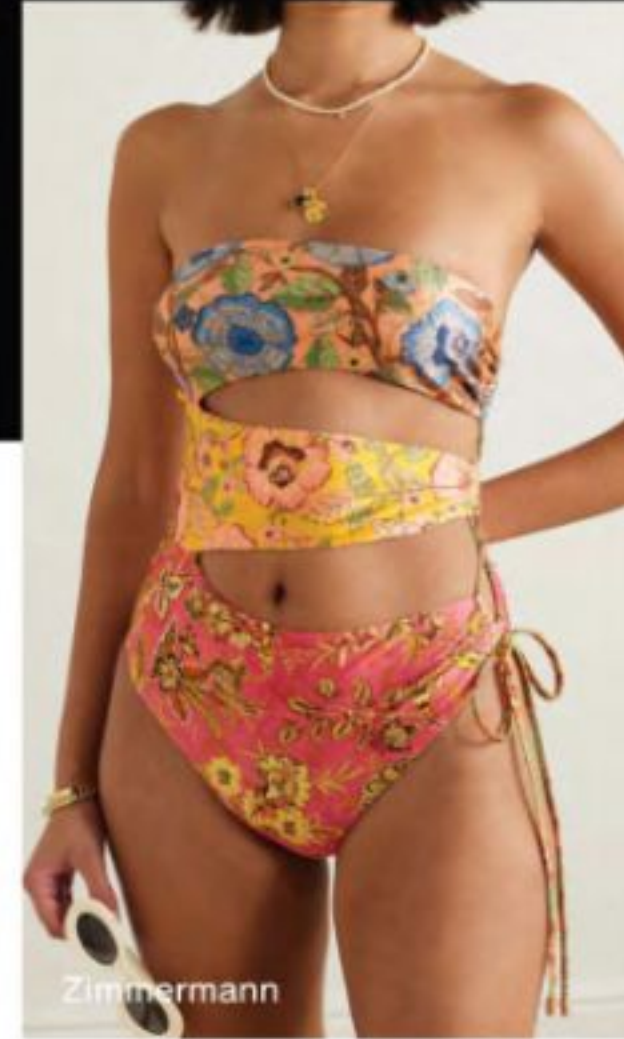
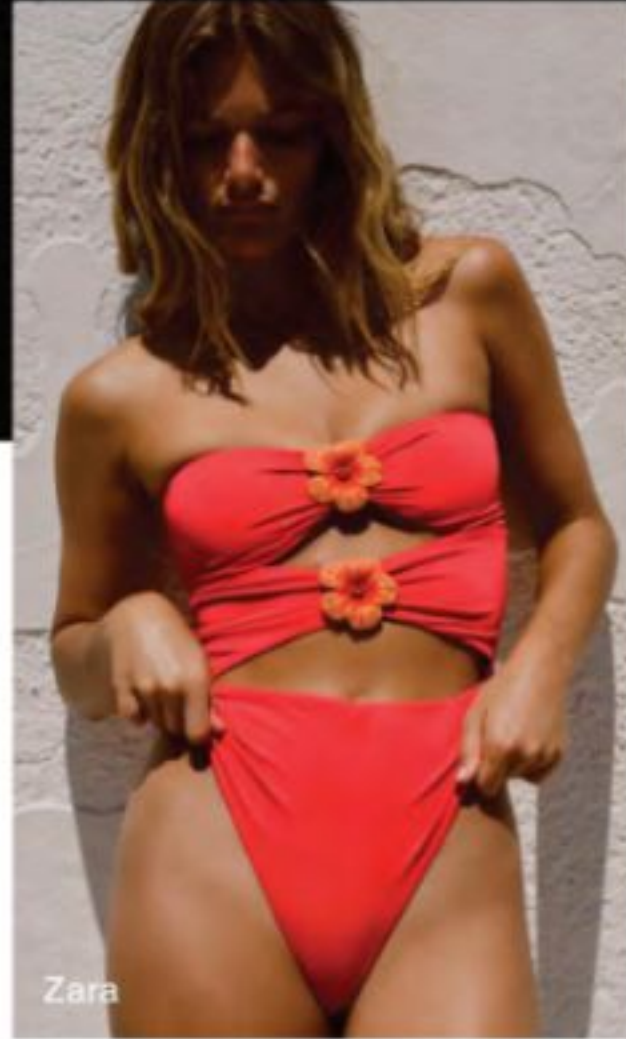


### Why it's a Commercial Must-Have

- The plunge V-neck swimsuit can effortlessly transition from beachwear to casual attire. It can be paired with shorts, skirts, or cover-ups, making it a go-to item for both swimming and socializing, thus increasing sales potential.

# MUST HAVE KEY SHAPE

## Cutout Bandeau Swimsuit

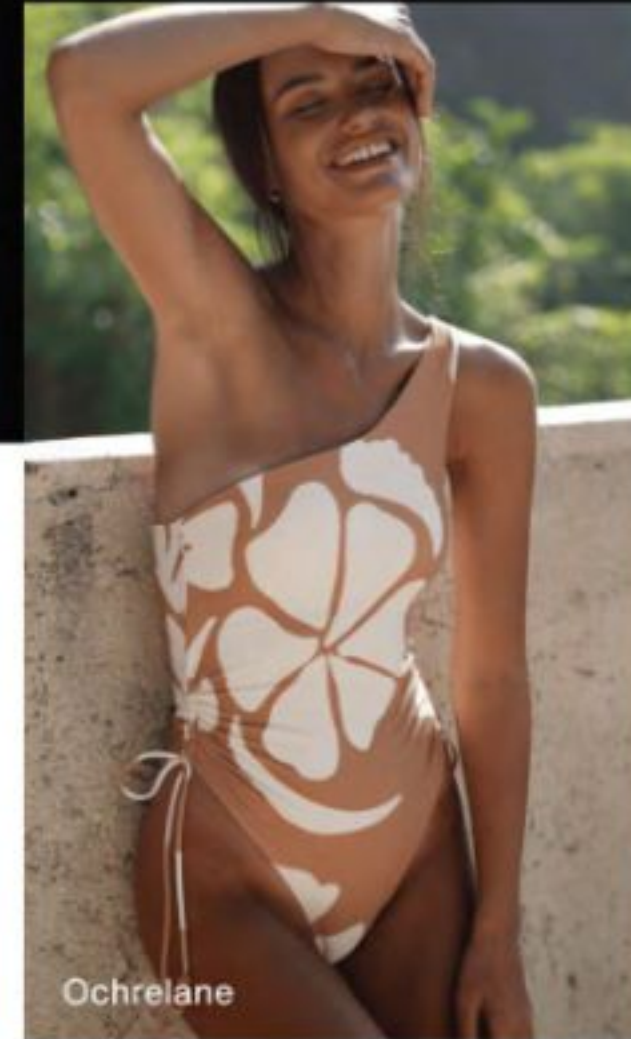


### Why it's a Commercial Must-Have

- Elevated design details, such as ruching, cutouts, and hardware, add luxury appeal to a timeless silhouette.
- The bandeau shape aligns with the growing demand for statement one-pieces that balance coverage and confidence.

# MUST HAVE KEY SHAPE

Adjustable swimsuit

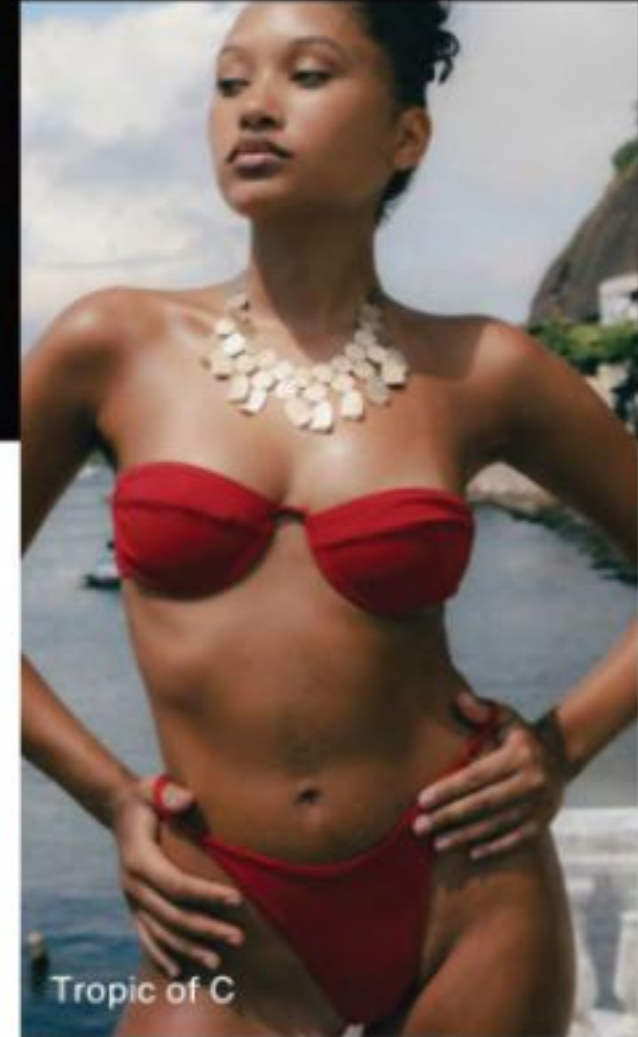
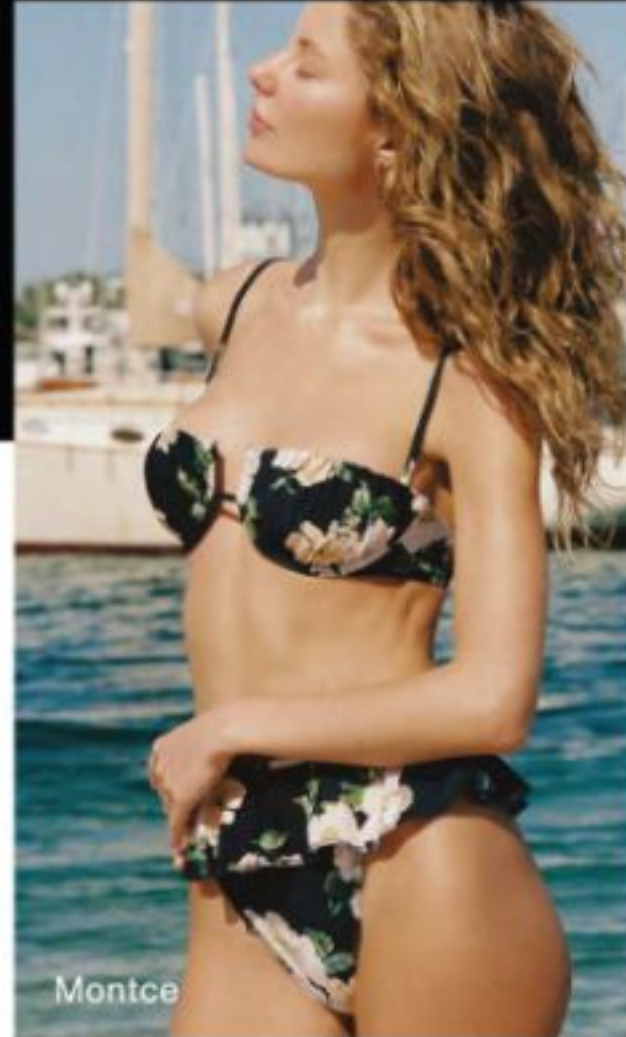
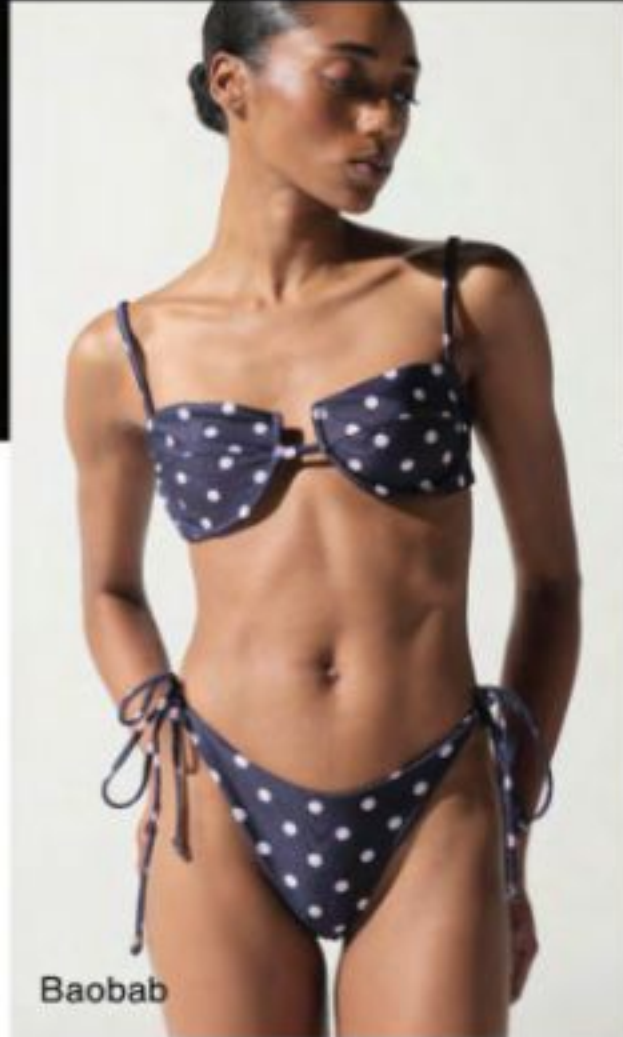


## Why it's a Commercial Must-Have

- Swimsuits with adjustable leg openings provide versatility, allowing you to change the look and style on a whim. You can opt for a more modest coverage at one moment and then adjust the fit for a trendy high-cut look for sunbathing.

# MUST HAVE KEY SHAPE

## Tab Front Balconette



### Why it's a Commercial Must-Have

- The Tab Front Balconette redefines classic swimwear with structured elegance and modern detailing/
- Versatile design works effortlessly across a variety of materials, from sleek solids to playful prints.

# MUST HAVE KEY SHAPE

High Waist Low Leg



Triangl



Fabletics



Dippin Daisys



Kulani Kinis



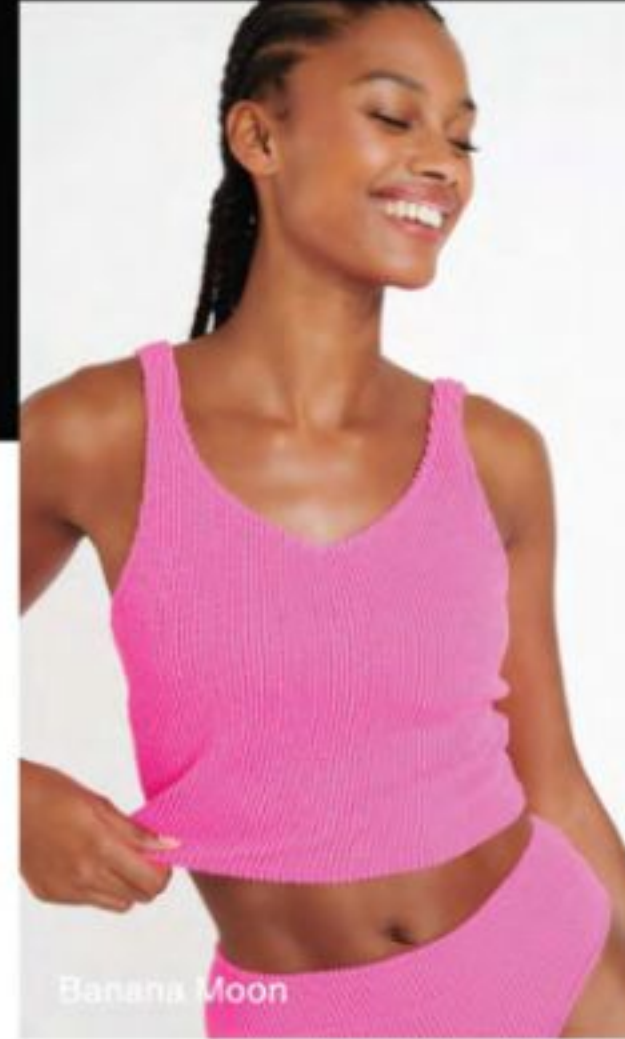
Seafolly

## Why it's a Commercial Must-Have

- the high waist low leg style has become increasingly popular for its retro charm and modern flair. This type of swimsuit not only flatters various body types but also offers comfort and coverage.

# MUST HAVE KEY SHAPE

## Tankini

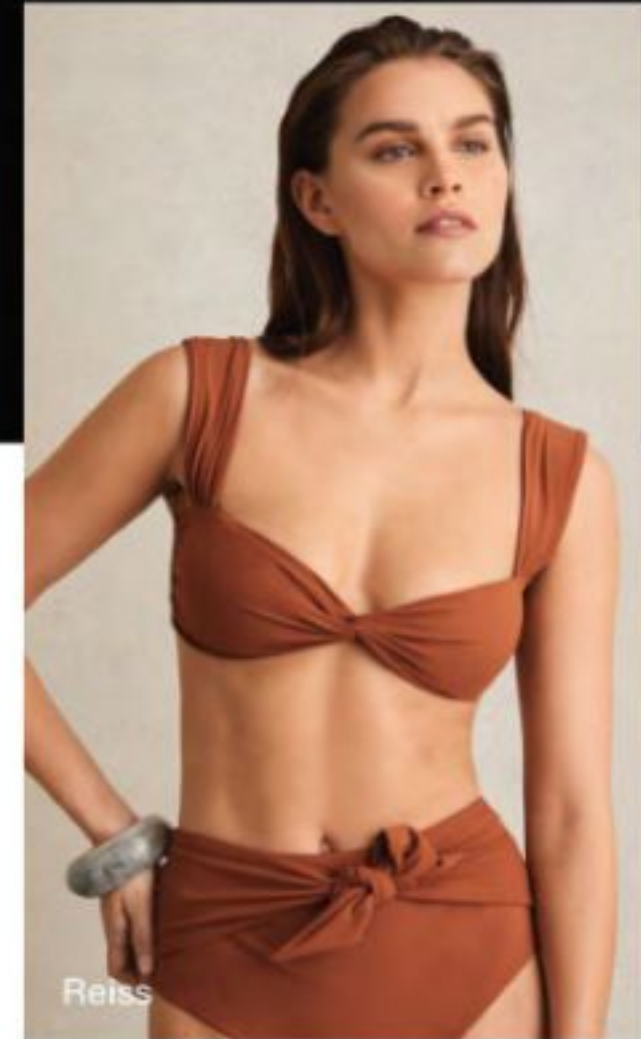


### Why it's a Commercial Must-Have

- One of the biggest perks of tankinis is the ability to mix and match tops and bottoms. This season, embrace versatility by choosing tankini tops that can be paired with high-waisted, bikini, or swim shorts.

# MUST HAVE KEY SHAPE

## Wide Strap Bikini

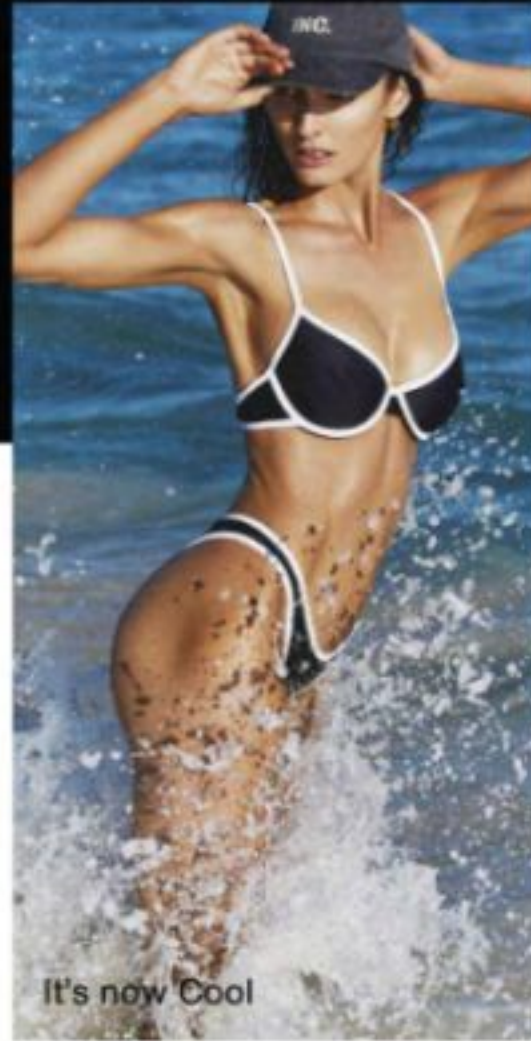


### Why it's a Commercial Must-Have

- Wide straps can create a balanced look by drawing attention to the shoulders while elongating the torso. This flattering silhouette enhances curves and provides a stylish alternative to traditional bikini tops.
- The wide-strap bikini design makes it versatile for various occasions, from beach outings to pool parties to even fashionable summer tops.

# MUST HAVE KEY SHAPE

## SportCore

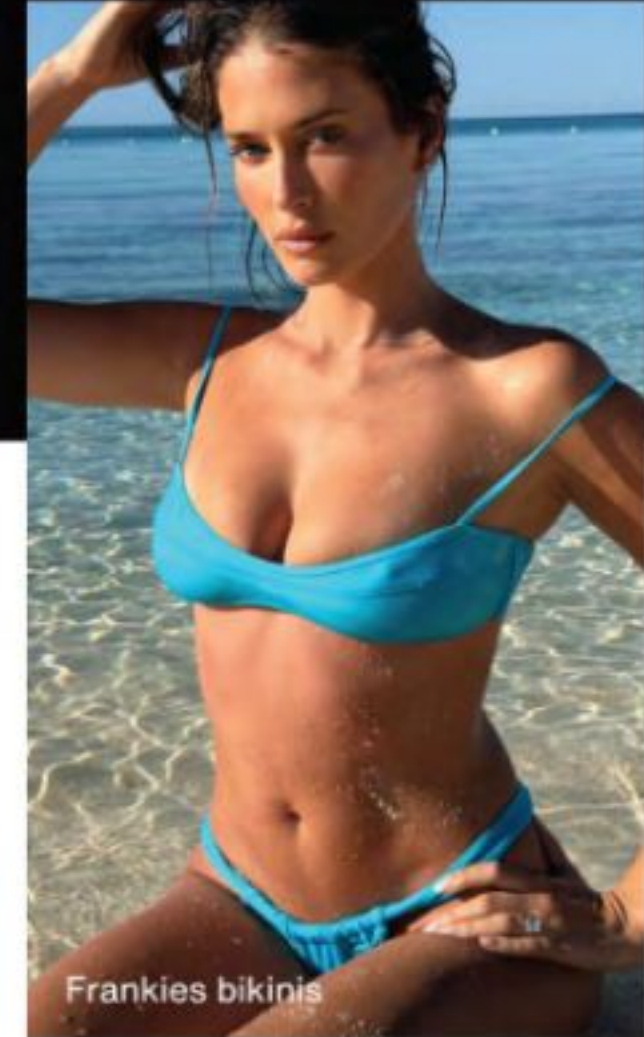
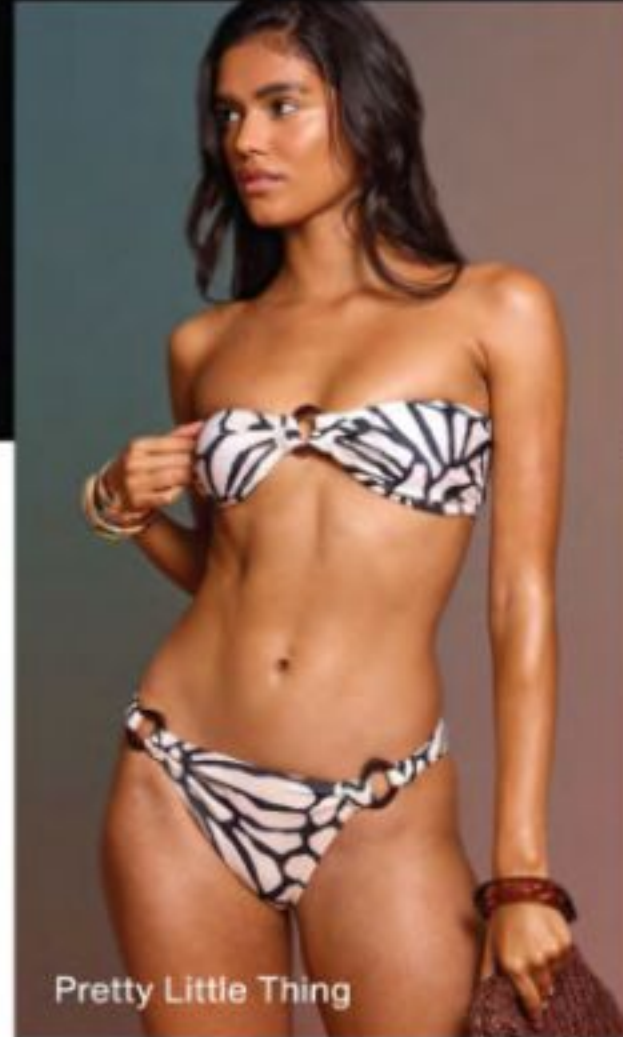


### Why it's a Commercial Must-Have

The Sportcore swimsuit combines modern athleticism with stylish flair, resulting in a flattering cut that enhances the body's natural shape. The design balances functionality and fashion, making it perfect for confident individuals seeking comfort and style at the beach or gym.

# EMERGING KEY SHAPE

## Skimpy Bandeau

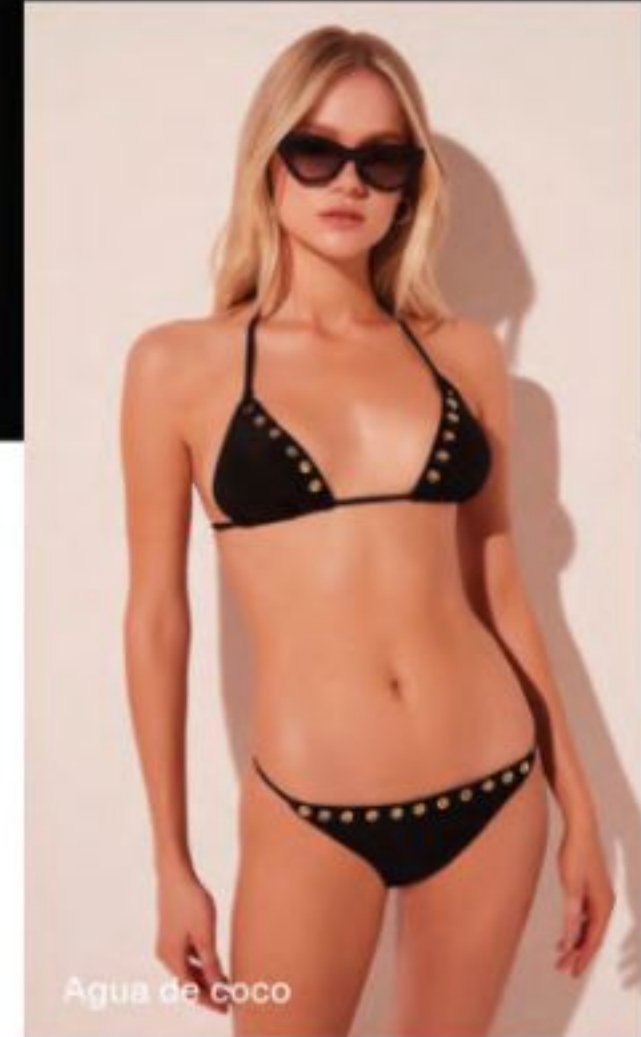
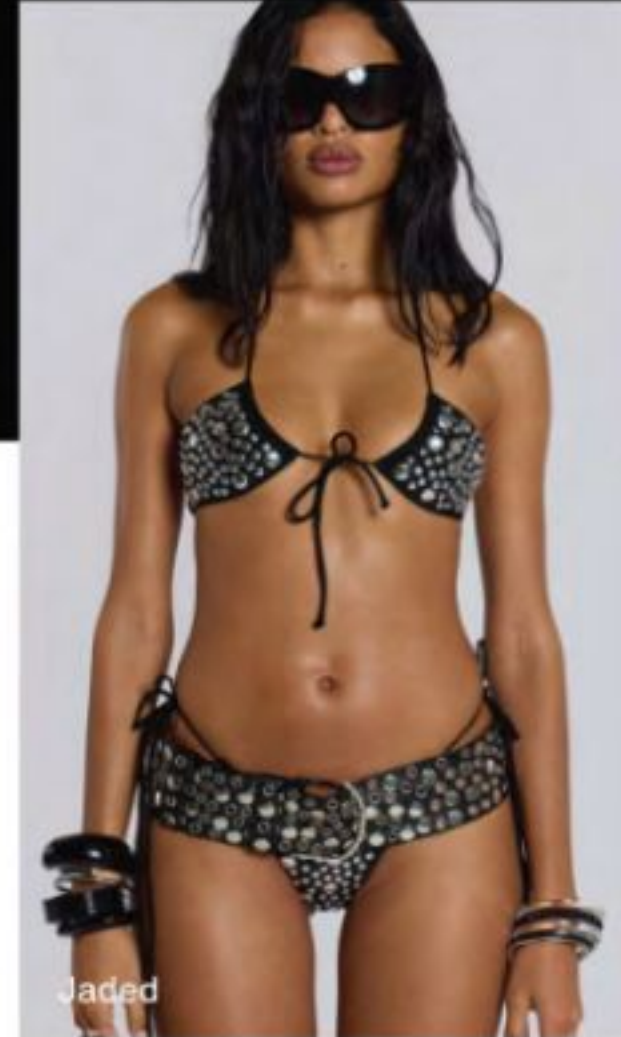
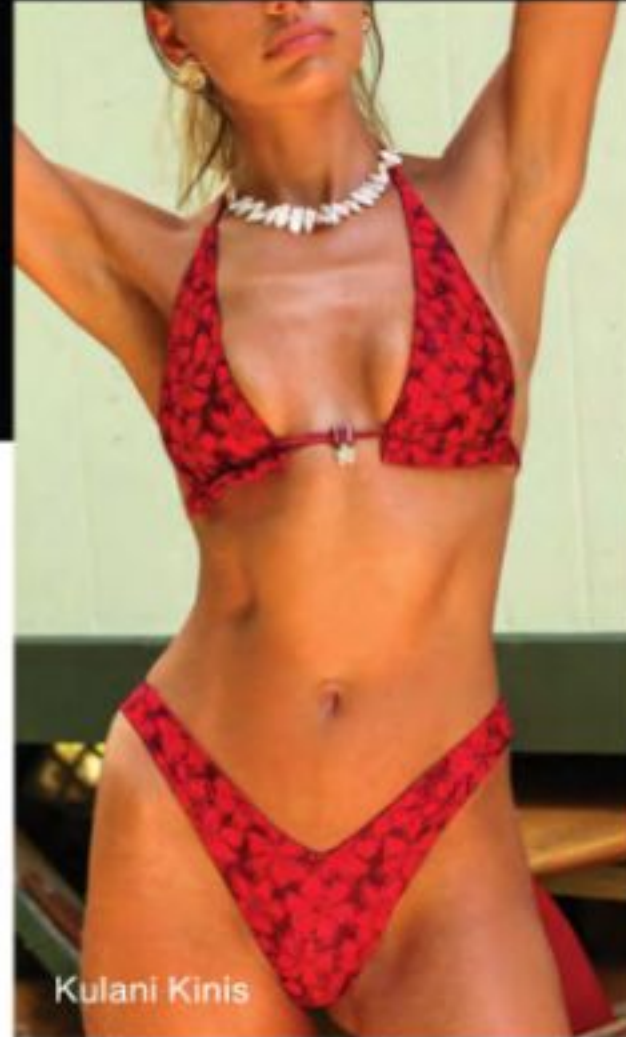


### Why it's an Emerging Must-Have

- The skimpy bandeau is at the forefront of swimwear trends, appealing to young customers who want to make a fashion statement. Its sleek design and variety of colors and prints encourage self-expression and individuality.
- The minimalist design of the micro bandeau pairs perfectly with a range of bottom styles, from high-waisted shorts to low-rise bikini bottoms. Encouraging mix-and-match possibilities enables young wearers to create their own unique looks

# EMERGING KEY SHAPE

## Extreme Bikini

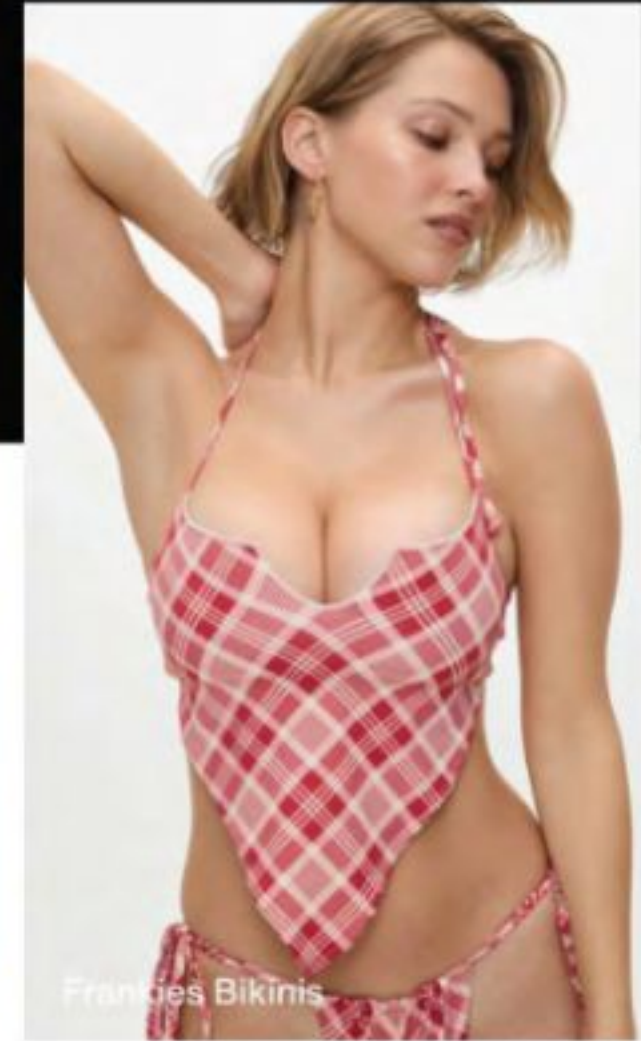
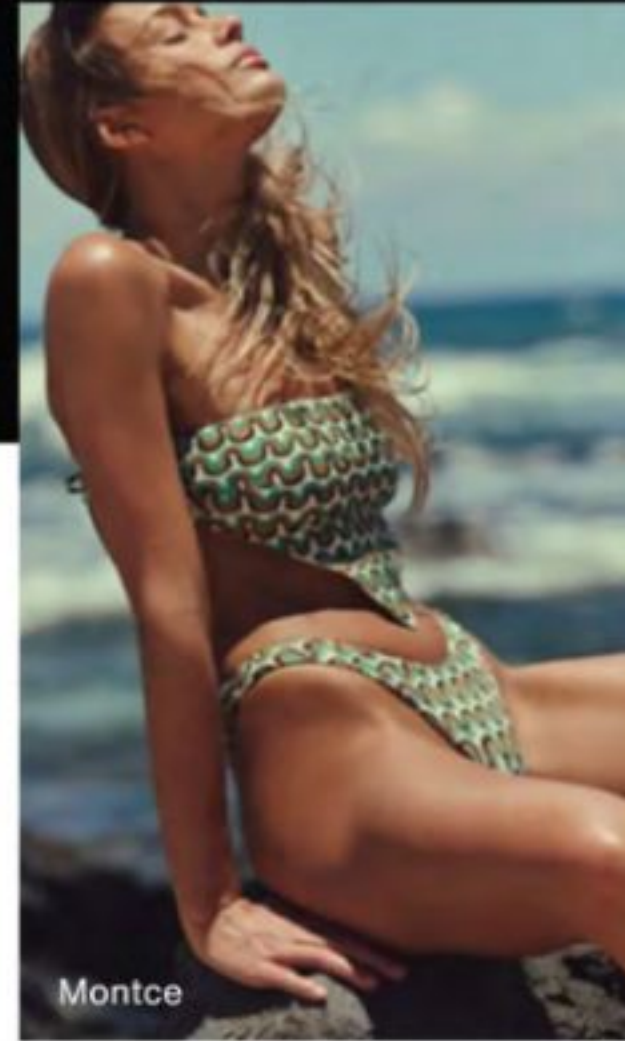
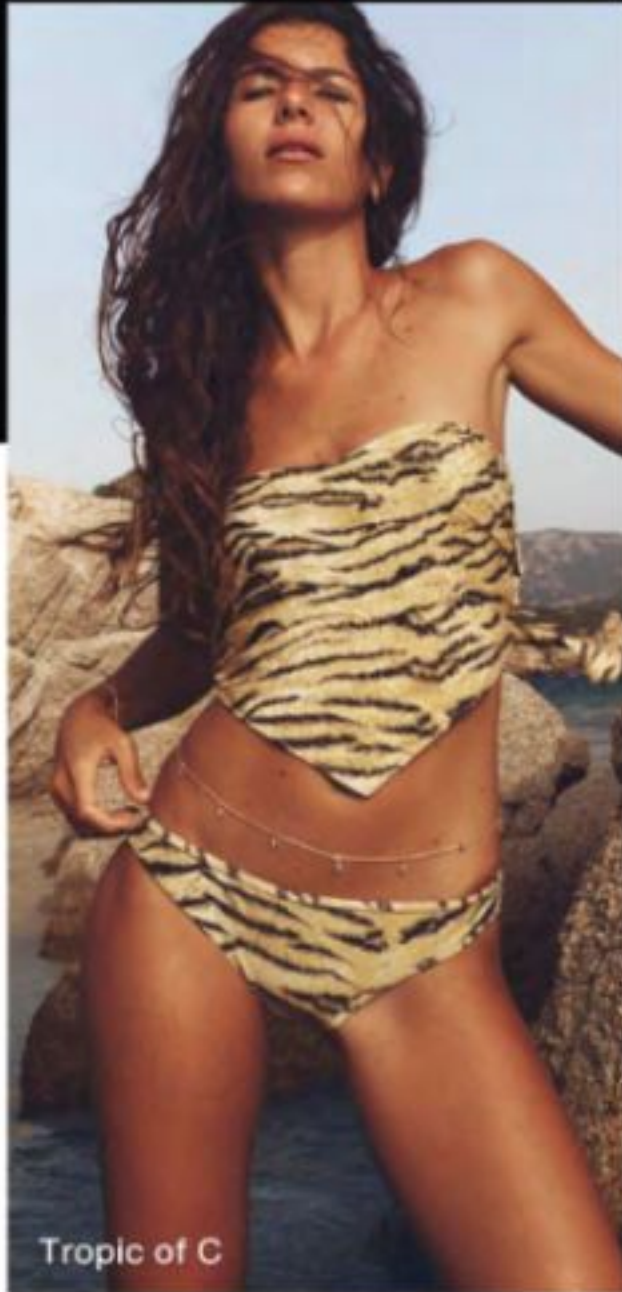


### Why it's an Emerging Must-Have

- Gothic and subcultural styles are becoming popular in swimwear, leading to darker, bolder designs.
- High cuts improve support and create a sculpted look while being stylish.

# EMERGING KEY SHAPE

## Scarf Bikini Top

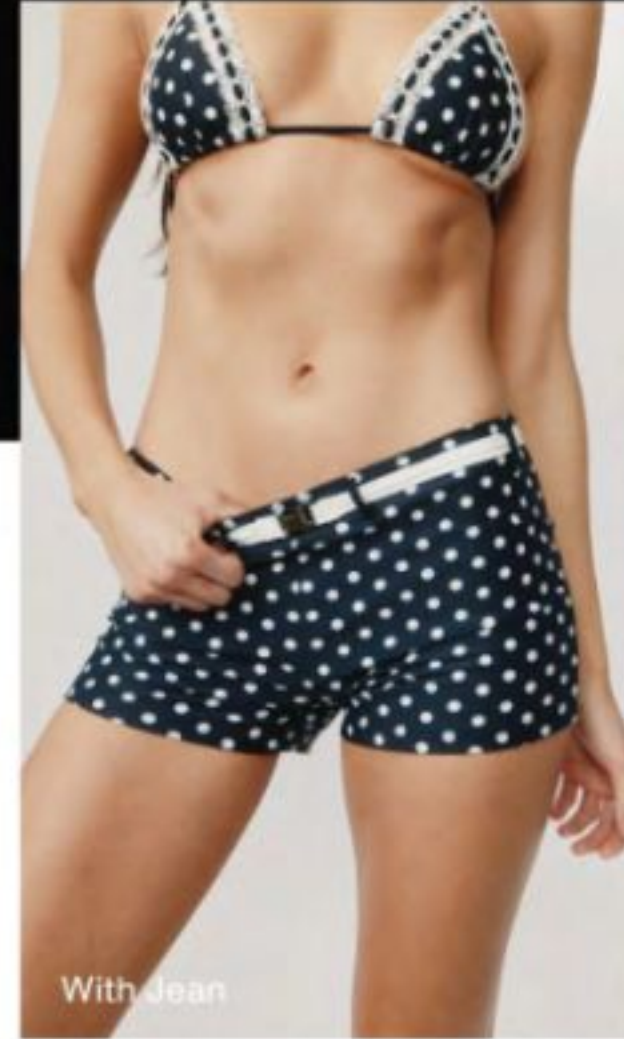
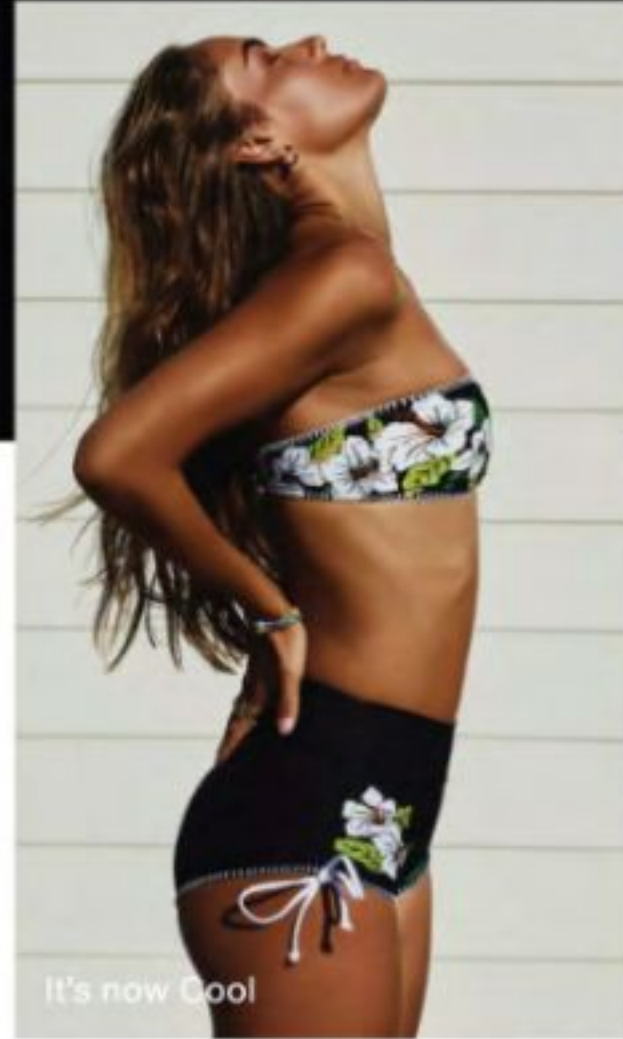


### Why it's an Emerging Must-Have

- Scarf bikini tops offer a unique ability to be styled in multiple ways, allowing wearers to customize their look according to their personal taste and body type. This adaptability makes them suitable for various occasions, whether lounging by the pool, beach outings, or even styled as part of a festival outfit.

# EMERGING KEY SHAPE

Cheeky

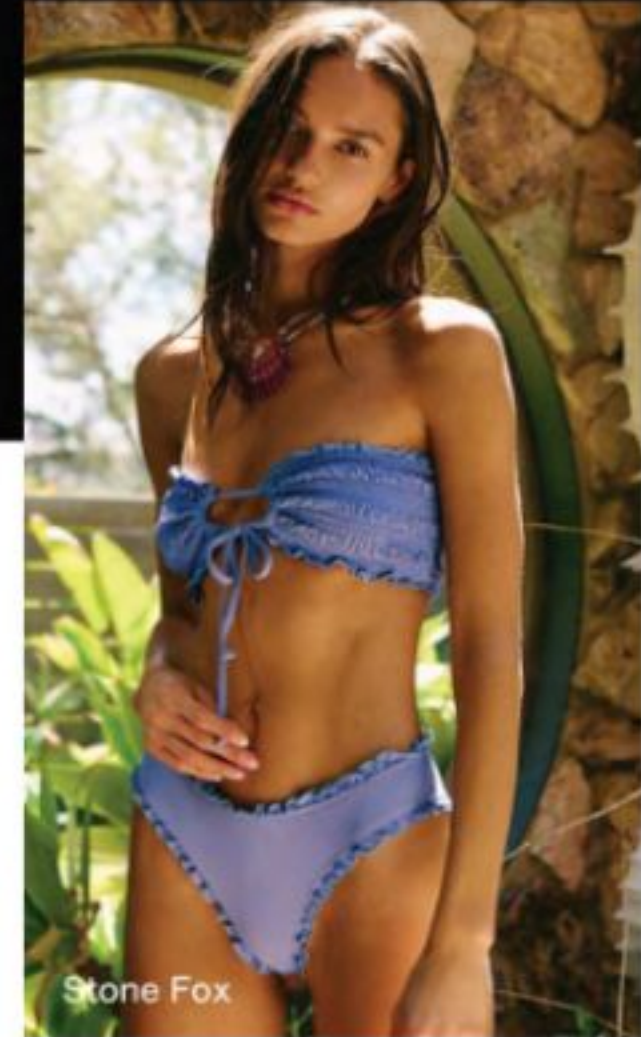
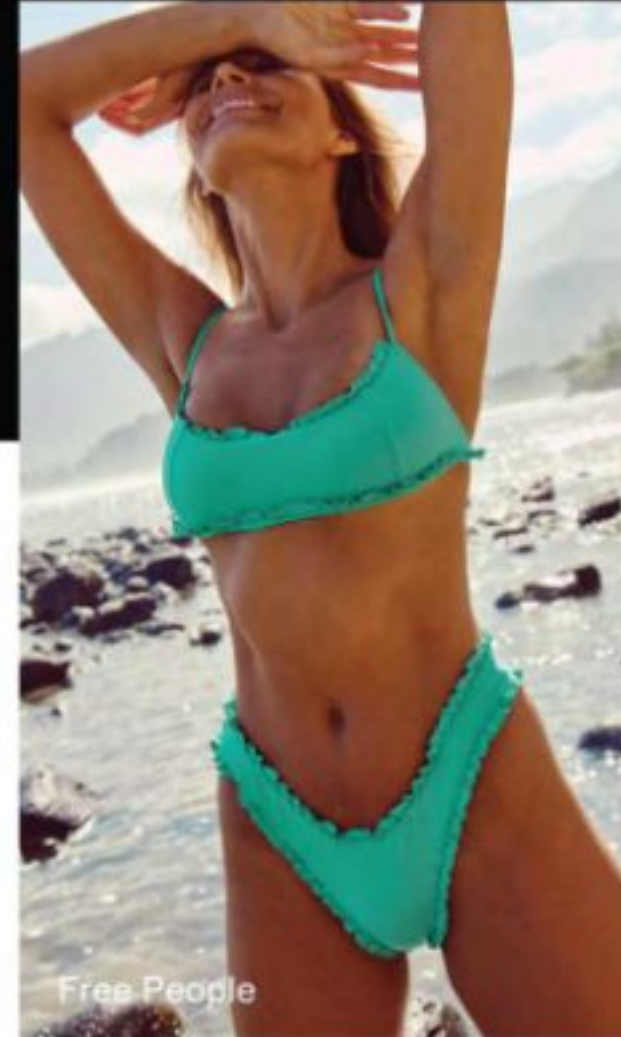
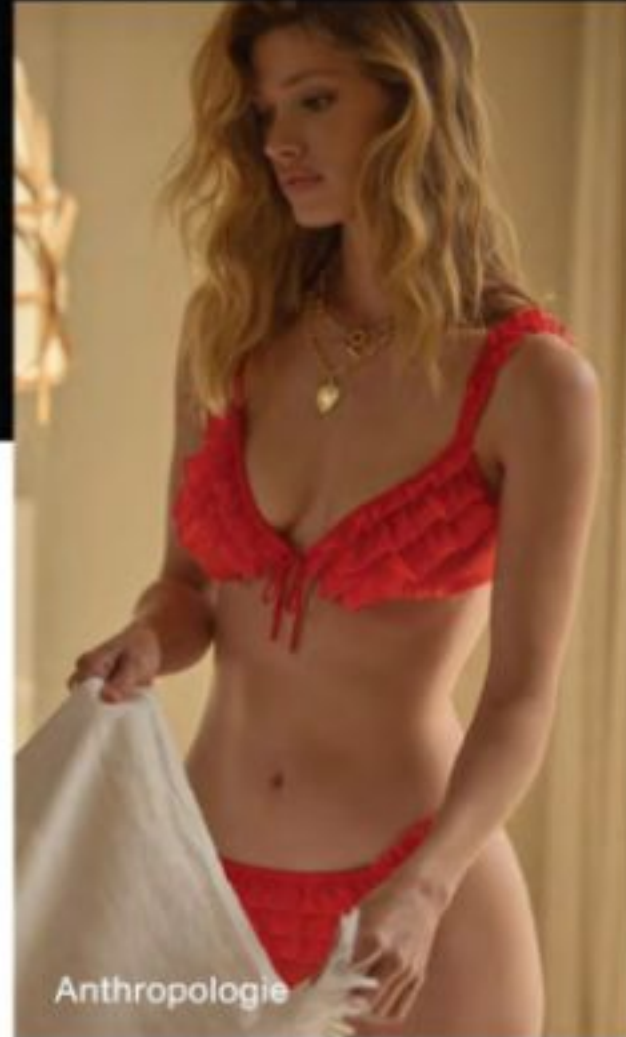


## Why it's an Emerging Must-Have

- The resurgence of Y2K aesthetics is making waves in swimwear, as shoppers opt for nostalgic, low-rise designs that blend confidence with a relaxed vibe.
- This versatile silhouette fits seamlessly into sporty, surf-inspired, and fashion-forward collections, catering to diverse body shapes and individual style choices.

# EMERGING KEY SHAPE

## Frill Bikini Set

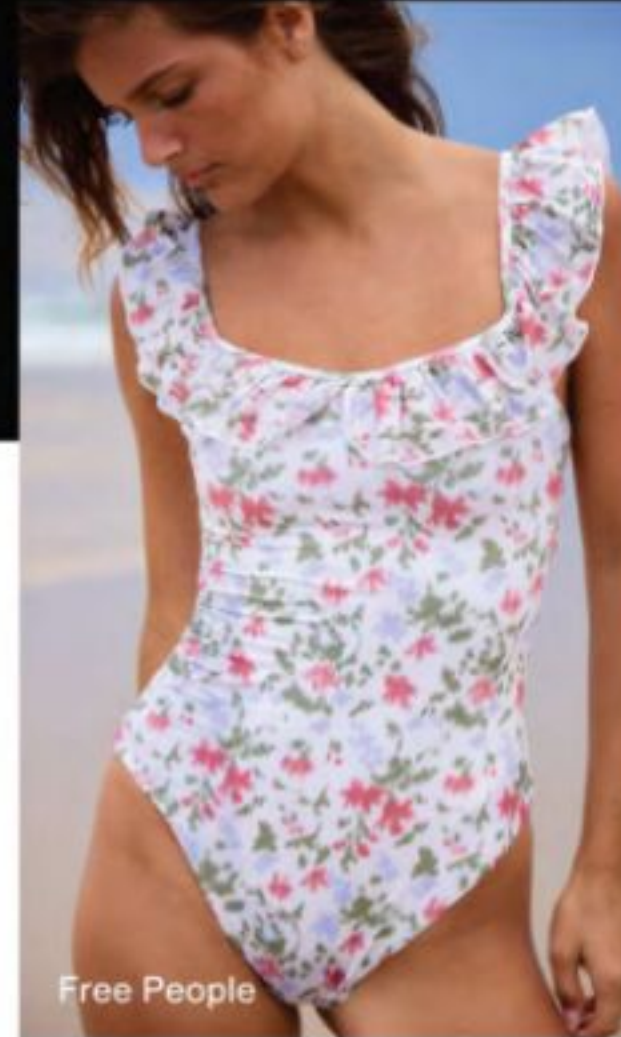
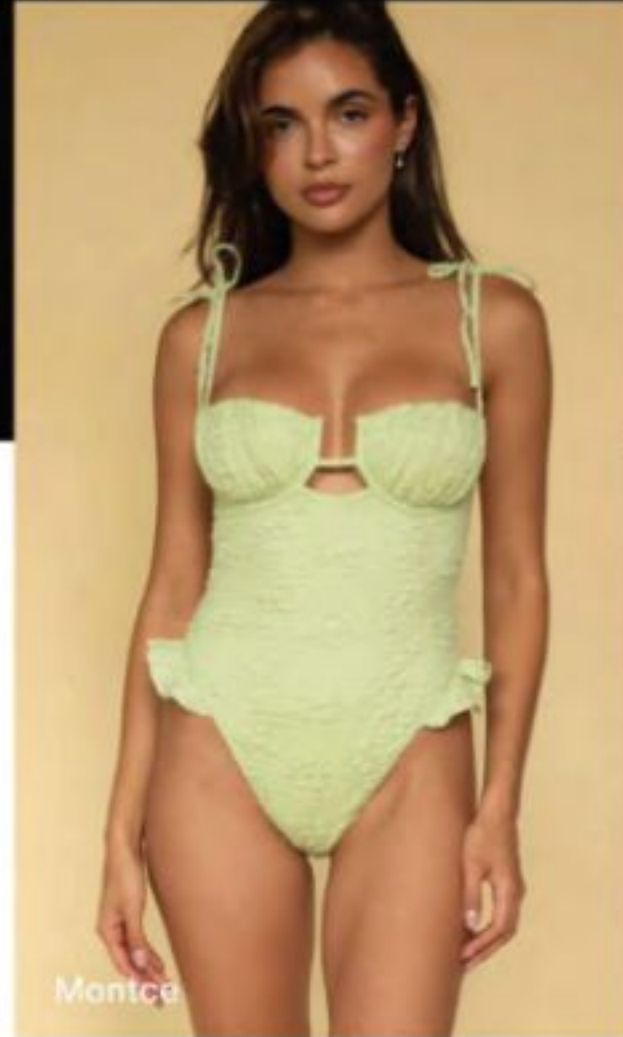


### Why it's an Emerging Must-Have

- Consumers continue to seek swimwear that feels expressive and romantic while maintaining a flattering, wearable fit.
- Voluminous and micro frills offer adaptable design directions that work across youthful and elevated markets.

# EMERGING KEY SHAPE

## Frill Swimsuit



### Why it's an Emerging Must-Have

- Frill detailing transforms into a sculptural element, introducing movement and depth to structured silhouettes.
- Textured and ruched fabrics enhance the aesthetic, catering to those who desire a blend of softness and durability.



# Capsule Collection

Trend Color & Detail

# Miami Heat

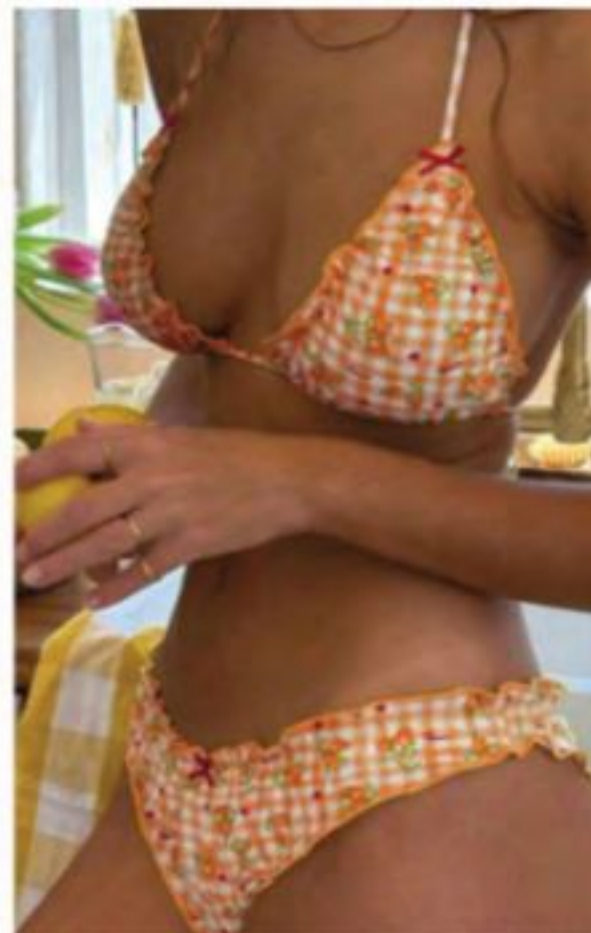
The season's swimwear trend focuses on fun, creativity, and whimsy. Brands are encouraged to incorporate candy-colored palettes, playful trims, and kitsch embellishments. The color stories are saturated, bright, and optimistic, supporting a nostalgic, "kidult" aesthetic that celebrates joyful self-expression in swimwear.

**Silhouette:** -The overall aesthetic is fun and youthful with emerging styles (skimpy bandeau, Tab front balconette, Frill bikini Set)

**Color & textured:** playful gelato hues & Power Pastels like fuchsia, tangerine, turquoise, and mint. moving away from dusty and powder pastel tones from previous seasons.

**Prints & patterns:** Retro Scenic print, Painter's Paradise, Gingham & Fruit print, Candy Stripe,

**Details:** Placement print, Grily Frills, ties knot detail, Lace Trim, Lettuce Edging



Kulani Kinis



11-0903 TCR Eye



15-2215 TCR Begonia Pink



16-3800 TCR African Violet



17-3904 TCR Persian Jewel



14-4340 TCR Spring Breeze



16-2145 TCR Bazaar Purple/12-0625



12-0826 TCR Heating Yellow



16-4112 TCR Skyway

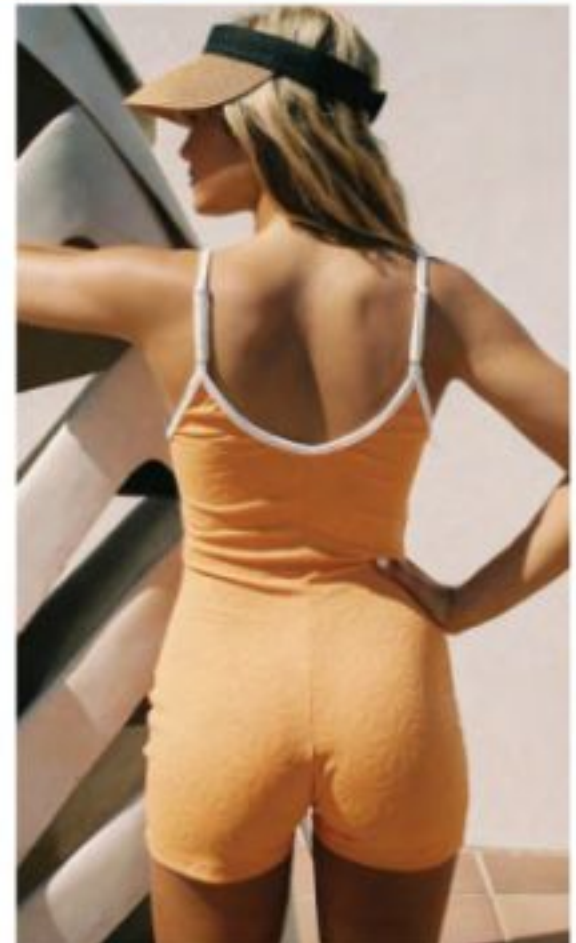


14-5418 TCR Peach Melba



17-1785 TCR Watermelon Pie

SS 27 SWIM TREND



#Gingham print #Candy Stripe #Destination Prints #Painter Paradise # Fruit Motif



## MATERIALS



Embossed Terry



Seersucker



Ribbed



Pique

## DETAILS



Lettuce Edging



Lingerie-inspired Detail



Fruit Motif



Charm

## PRINT & GRAPHIC



Palm tree postcard



Watercolor floral



Fruity Gingham



Food in fashion

# Gingham Garden



**FABRIC DIRECTION**  
*Micro #ISPT47016RP*



SHP-7529A-GH



SOP-0569-2FLR

**CREATIVE DIRECTION**



**COLLECTION:**

- 003-TT-00000 Removable Triangle Bra
- 003-TT-00000 Tie side Cheeky
- 003-TT-00011 V neck Swimsuit
- 003-TT-00012 Underwire Bikini Top
- 003-TT-00013 Bikini Brief

# Plam Spring

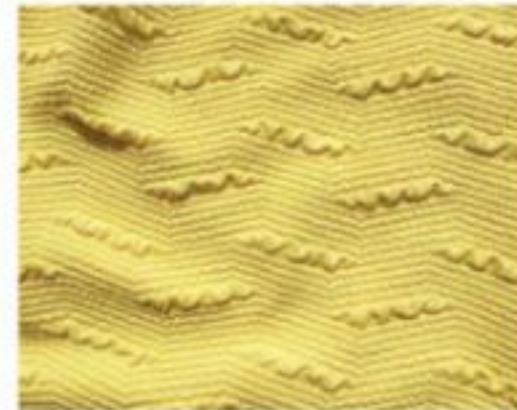


**FABRIC DIRECTION**  
Micro #ISPT47016RP

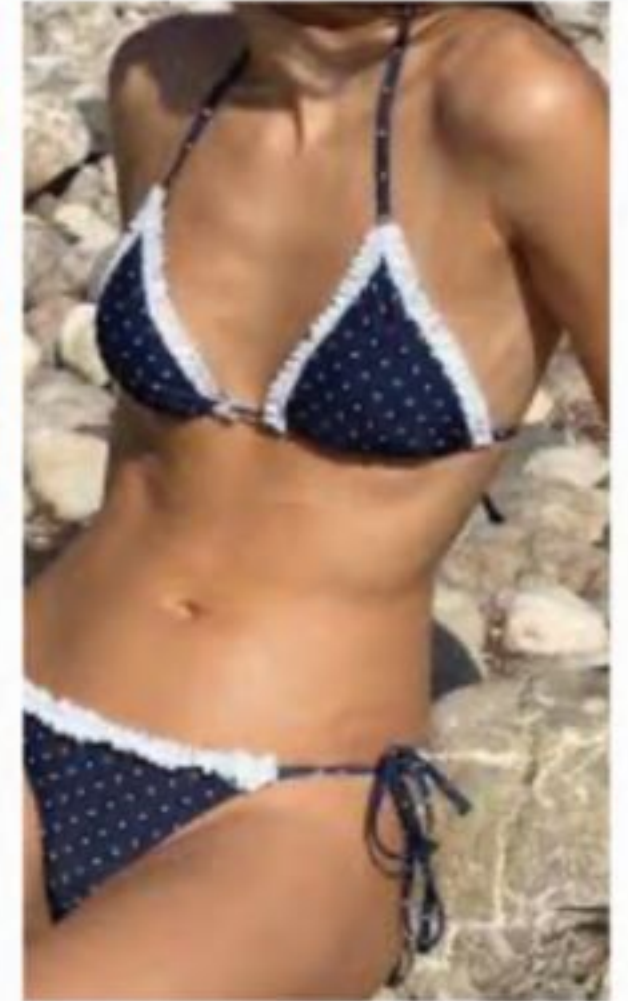


SOP-0547-2-OC

Texture Jacquard #AM051J



**CREATIVE DIRECTION**



S0646

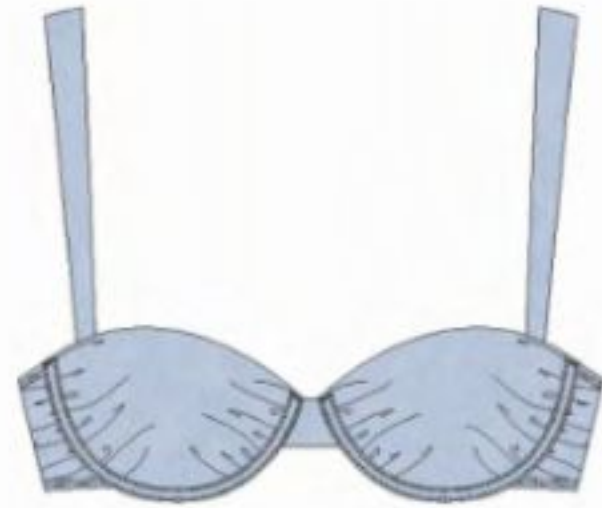


J1398

**COLLECTION:**

- 003-TT-00253 Removable Longline Bandeau
- 003-TT-00254 Bikini
- 003-TT-00256 Unlined Skimpy Triangle Bra
- 003-TT-00255 Tie-Side Cheeky
- 003-TT-00042 Removable Triangle Bra
- 003-TT-00043 Tie-Side Bikini
- 003-TT-00044 Removable Bandeau Swimsuit

# Fruity Gingham



**FABRIC DIRECTION**  
Micro #ISPT47016RP

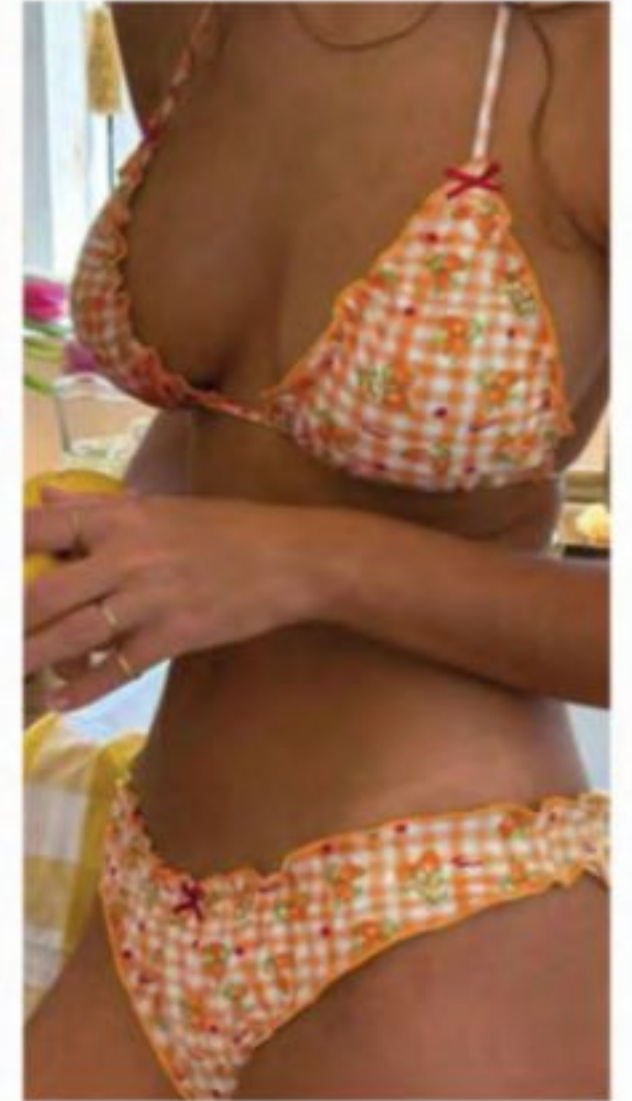


SHP-7541A-FRT-GH

Texture Jacquard #AM051J



**CREATIVE DIRECTION**



**COLLECTION:**

003-SS-00340 Padded Triangle Bra

003-SS-00341 Tie side Bikini Brief

003-TT-00045 Balconette

003-TT-00046 High Waist Brief

**SS 27 SWIM TREND**

# Swimtimates



**FABRIC DIRECTION**  
Ribbed #HS-1350



**CREATIVE DIRECTION**



*SHP-7522-DOT*

**COLLECTION:**

- 003-TT-00000 Underwire
- 003-TT-00000 Highleg Cheeky
- 003-TT-00193 Removable Halter Triangle Bra
- 003-TT-00196 Mid-waist Hipster
- 003-TT-00193 Padded Bikini Top
- 003-TT-00196 Classic Brief

# Reversible Mix and Match

## CREATIVE DIRECTION



## FABRIC DIRECTION

Micro #P525



SHP-7522-DOT



SHP-7523-DOT



SHP-7524-STP

## COLLECTION:

003-TT-00000 Reversible Triangle Bra

003-TT-00000 Tied-side Bikini

003-TT-00193 Reversible Bandeau Bra

003-TT-00196 low Waist Hipster

SS 27 SWIM TREND

# Beachcomber



## FABRIC DIRECTION

Lurex Fabric: RB22125



HP-6476-1C-ANM

Lurex Fabric: RB22125



## CREATIVE DIRECTION



## COLLECTION:

003-TT-00095 Balconette

003-TT-00096 Hipster

003-TT-00000 Plunge Control Swimsuit

# Tropicalia

SS27 swim trend is set to make waves on beaches and poolside lounges alike. This season's swimwear features fun, vibrant designs that blend playful and sophisticated elements. Let's explore the key trends represented in recent collections.

**Silhouette:** Highlight the shift towards unlined, skimpy fits that cater to those seeking minimal coverage while achieving the perfect suntan.

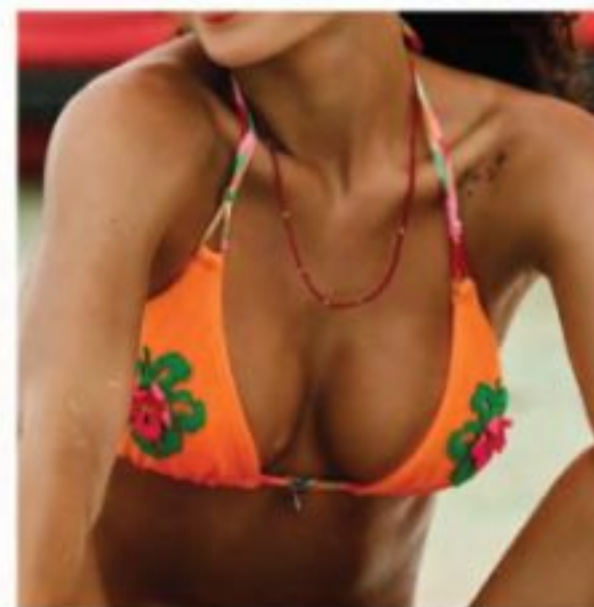
**Color & texture:** The palette thrives on rich saturation, with hot tropical brights layered with playful contrasts.

**Prints & patterns:** Destination prints inspired by picturesque destinations. Expect beachy motifs like palm trees, sunsets, and ocean waves, Bold Multi-striped, Food inspired print

**Details :** Color blocking, contrasted piping, Statement Embroidery



Zara



It's now cool



11-0007 TCX  
Water White



14-3205 TCX  
Prouette



16-2125 TN  
Sugar Plum



16-1852 TCX  
Rose Red



16-5426 TCX  
Water Garden



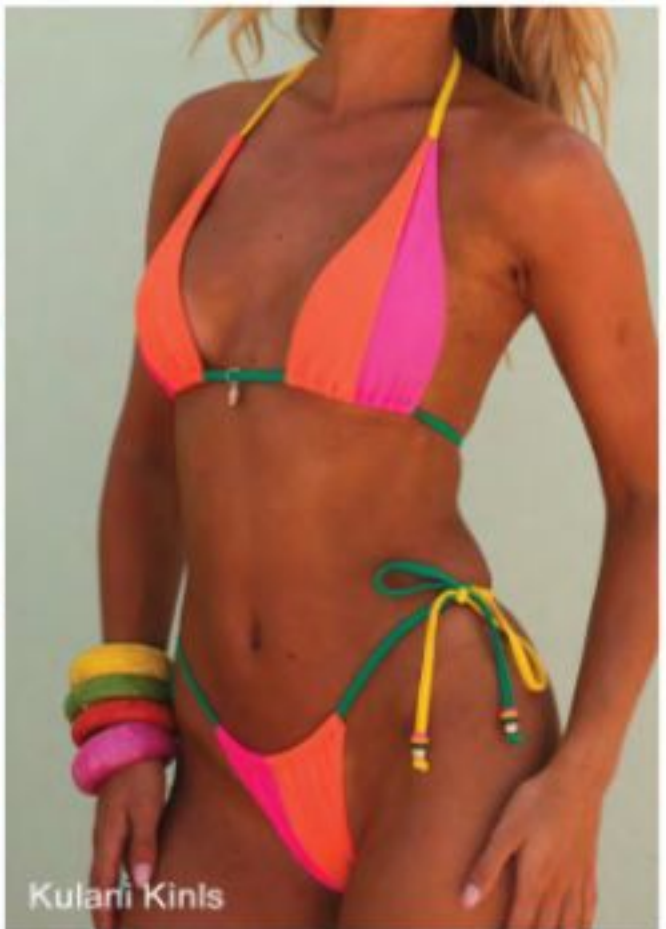
13-1445 TN  
Orange Pop



16-4245 TN  
Electric Blue Lemo



16-3806 TCX  
Black Bean



Kulani Kinls



its now cool



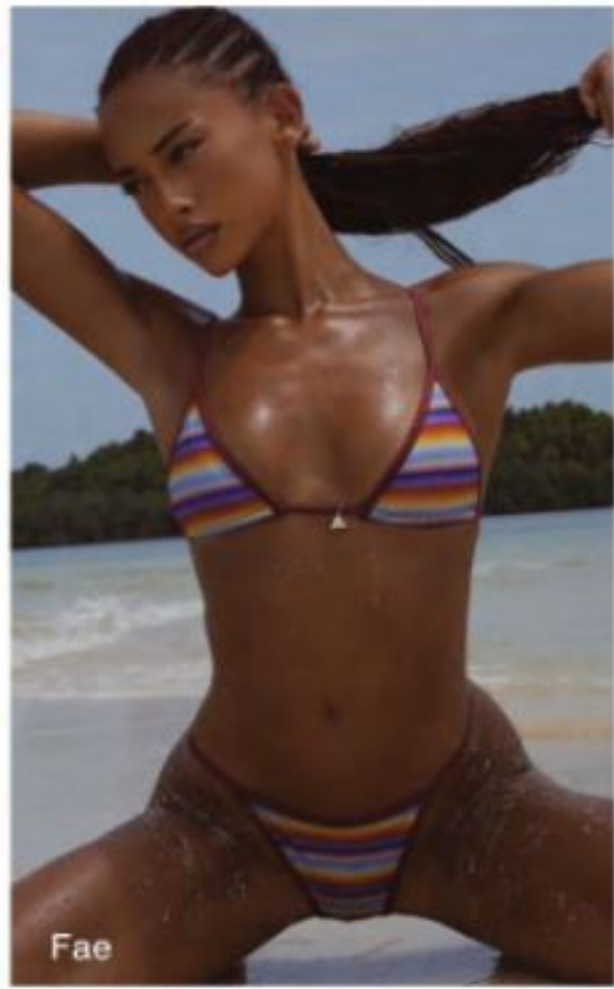
Triangl



Salt Gypsy



Azulu

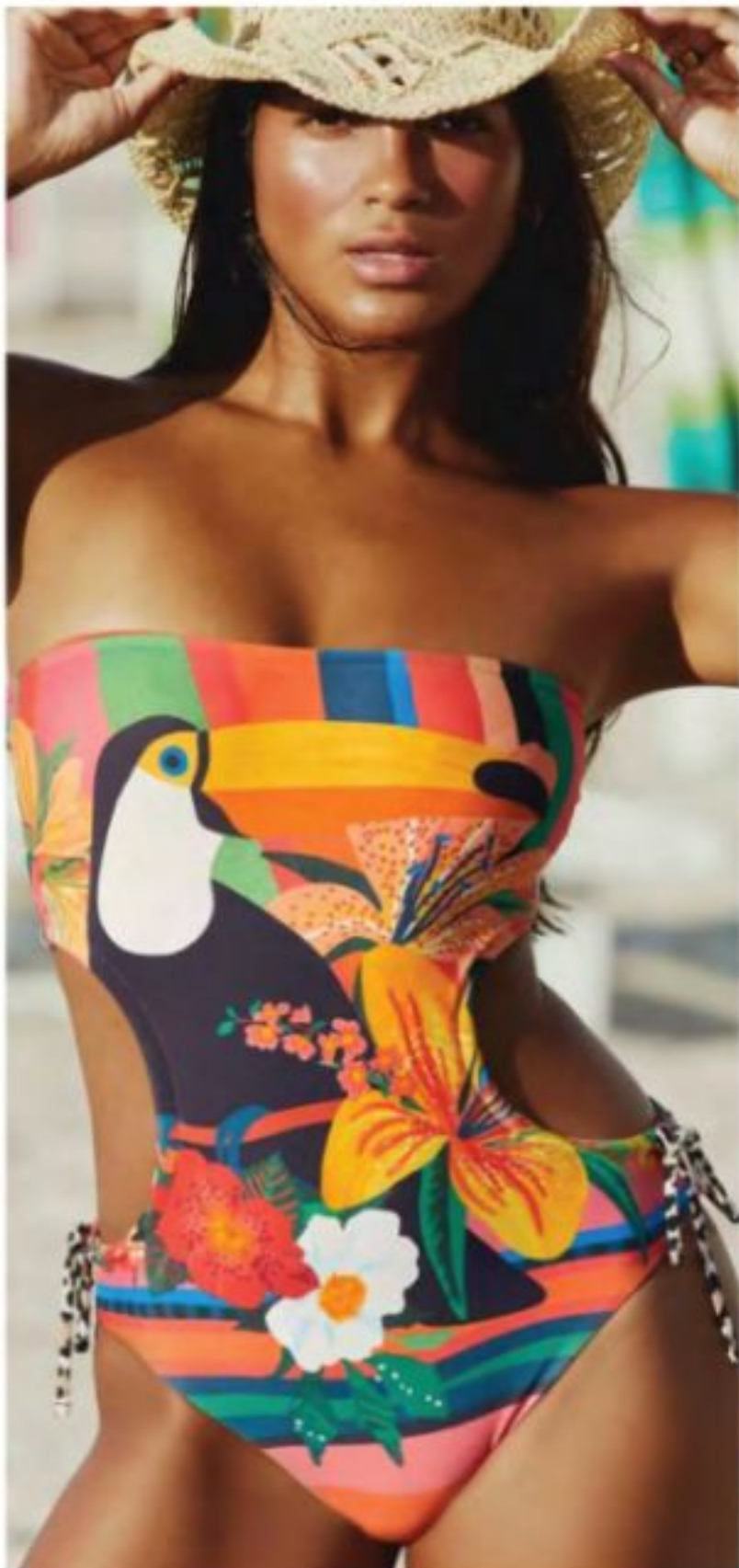


Fae



Kulani Kinls

Target Watercolor Bloom #Multi-Stripe # Destination Prints



## MATERIALS



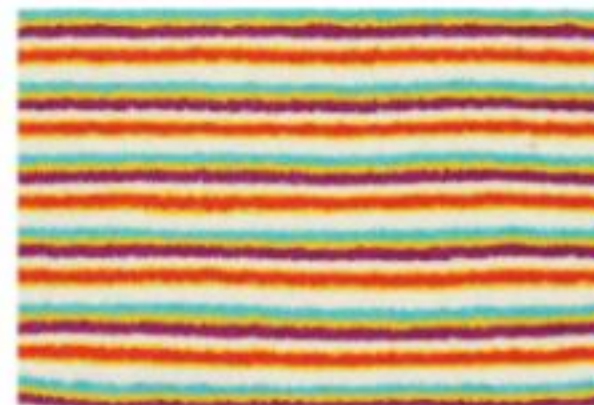
Jacquard



Velvet



Ribbed



Terry Towelling

## DETAILS



Lettuce Edging



Contrasted Binding



Fun Placement Motif



Statement hardware

## PRINT & GRAPHIC



Painted Tropicals



Multi-Striped



Placement Tropical



Food in fashion

# Playful Foodies



Charms

**FABRIC DIRECTION**  
Micro #ISPT47016RP



SHP-7556-OTH



SHP-7542-STP

**CREATIVE DIRECTION**



**COLLECTION:**

- 003-TT-00000 Unlined Triangle
- 003-TT-00000 Tied-side Cheeky
- 003-TT-00000 Unlined Skimpy Bandeau
- 003-TT-00000 Adjustable Cheeky

# Tropical Paradise



**FABRIC DIRECTION**  
Micro #ISPT47016RP

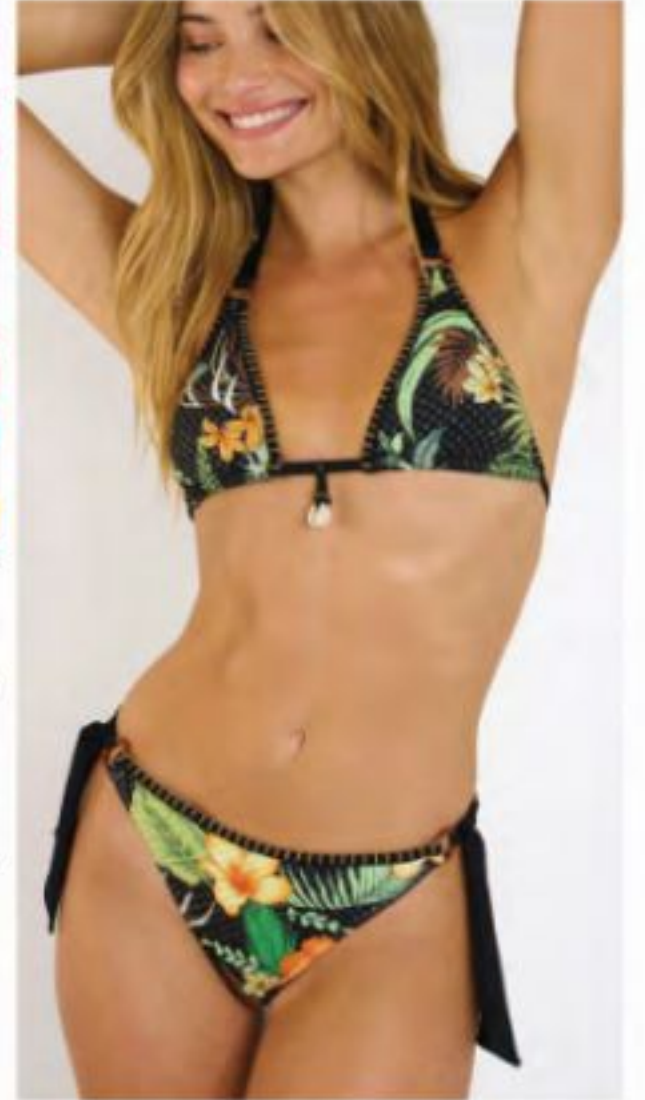


SOP-0548H



JLK25-252

**CREATIVE DIRECTION**



**COLLECTION:**

- 003-TT-00000 Removable Triangle Bra
- 003-TT-00000 Tanga Cheeky
- 003-TT-00000 Removable Bandeau
- 003-TT-00000 Mid-waist Brief

# Warm Wanderlust

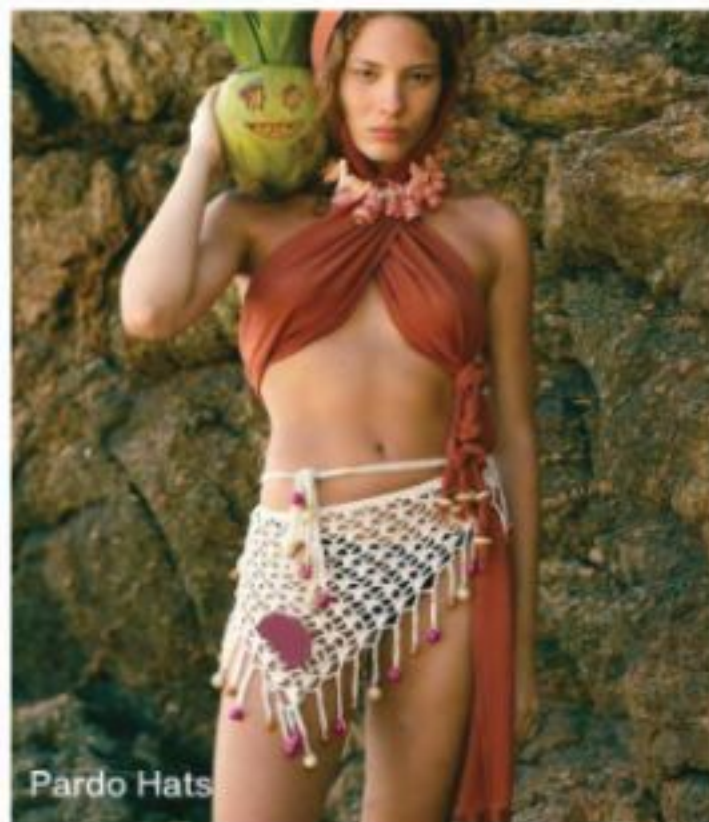
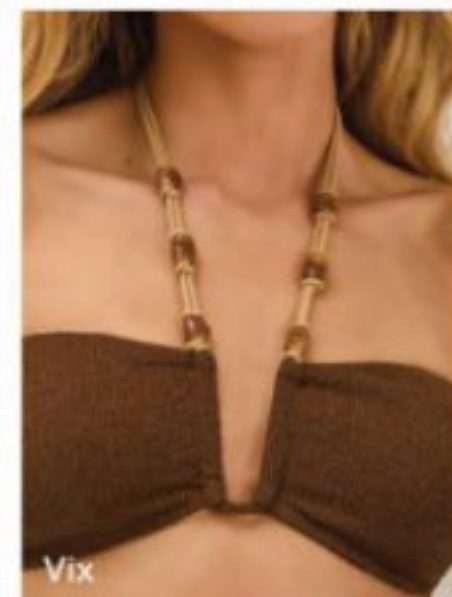
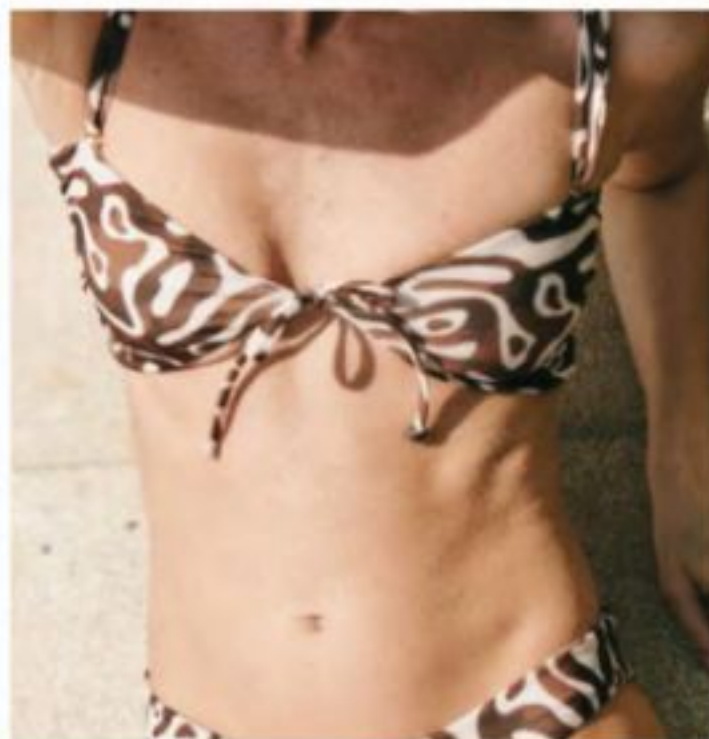
The SS27 swimwear trends blend artistic innovation with natural inspiration. Featuring large-scale abstract shapes, earthy motifs, and updated stripes, this season encourages creativity and craftsmanship. Whether you prefer bold, expressive styles or subtle, refined looks, intricate embellishments add a touch of luxury to the collection.

**Silhouette:** Elegance is reimagined through minimalistic designs and luxurious details. Modern cuts and warm color palettes make these pieces ideal for those seeking sophistication and timeless beauty.

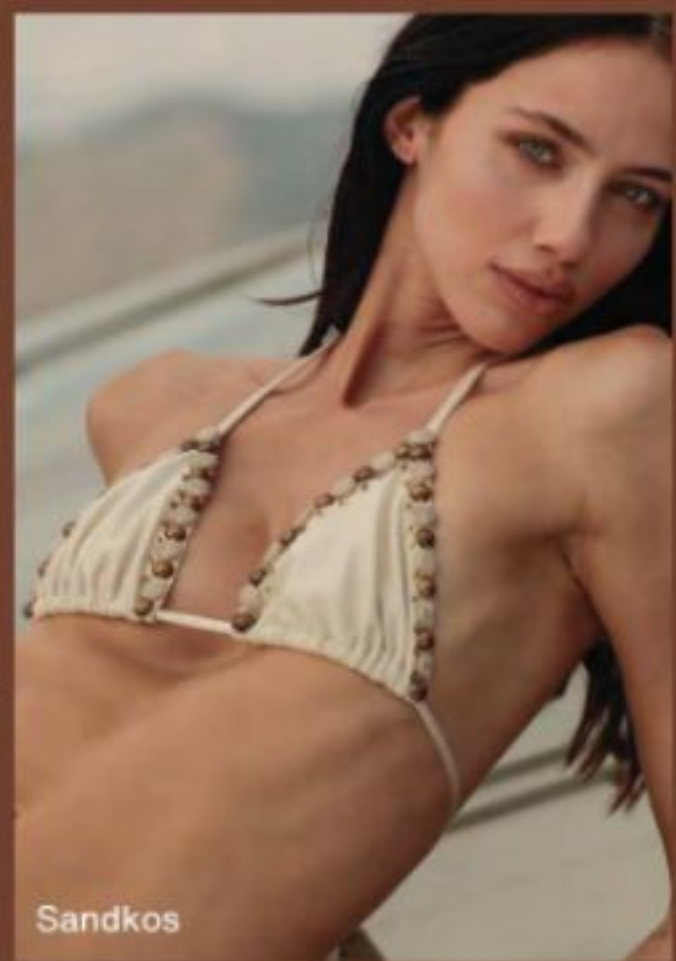
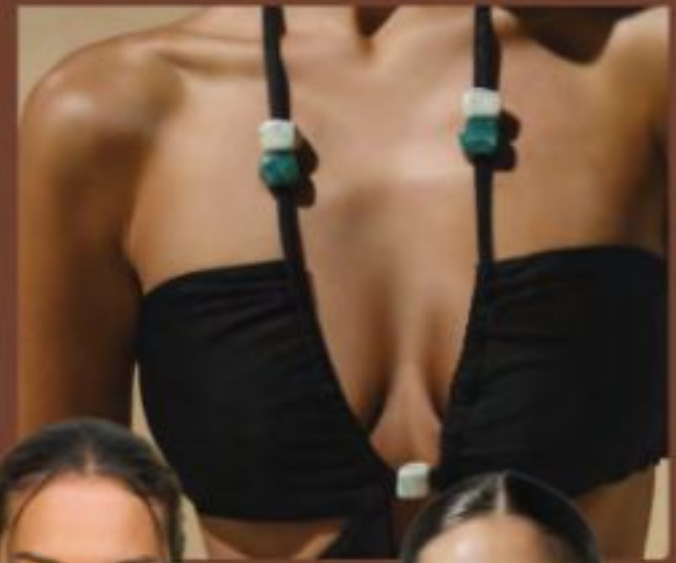
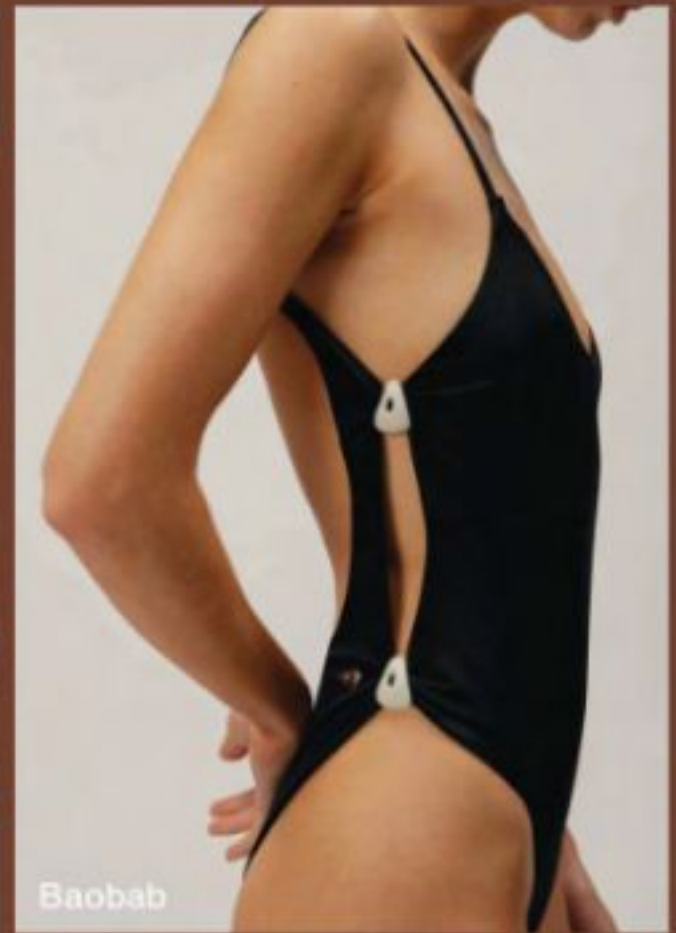
**Color & texture:** Warm, earthy tones enhance the organic feel, giving the designs a rustic yet chic vibe.

**Prints & patterns:** Inspired by nature, the collection showcases bold print with large scales. Keep icon simple, featuring suns, flowers waves, stripes and abstract shapes.

- **Details:** Jewelry-inspired accent, Sun motif, Lean into crafted aesthetics, embracing imperfection and raw elements. Use handcrafted techniques like crochet, knotting and embroidery to upgrade existing styles



SS 27 SWIM TREND



Sandkos

Sandkos

Baobab

Mirror Palais

Dolfa

Jade Swim

Cult Gaia

Babob



Sir The Label



Scorpio rising



Rat & Bao

Large Scales Abstract Shapes, Suns, Flowers, Waves, stripes



## MATERIALS



High Shine Micro



Knitted Shine



Chrochet Knit



Crinkle Texture

## DETAILS



Macrame



Treasure charms



Embellishment



Precious Stones



Pearlescent

## PRINT & GRAPHIC



Soulful Botanica



Abstract Graphic animal



Stripe Tropic



Painterly Abstract Stripe

# Boho Macrame

---



CREATIVE DIRECTION



**COLLECTION:**

003-TT-00000 Removable Bandeau

003-TT-00000 V cut Cheeky

003-TT-00000 U back Swimsuit

SS 27 SWIM TREND

# Painterly Stripe



**FABRIC DIRECTION**  
Micro #IHX6618R



SHP-7551-2-STP



SHP-7552-STP

**CREATIVE DIRECTION**



**COLLECTION:**

003-TT-00000 Removable Triangle Bra

003-TT-00028 Tied Side Bikini Brief

003-TT-00029 Cut Out Swimsuit

# Painterly Stripe



**FABRIC DIRECTION**  
Micro #IHX6618R



SHP-7551-2-STP



SHP-7552-STP

**CREATIVE DIRECTION**



**COLLECTION:**  
003-TT-00000 Removable Triangle Bra  
003-TT-00028 Tied Side Bikini Brief  
003-TT-00029 Cut Out Swimsuit

# Watercolour Painted Stripe



## FABRIC DIRECTION

Shiny Micro #T561901NH



SHP-7609-STP



JL25-216B



A875

## CREATIVE DIRECTION



## COLLECTION:

- 003-TT-00000 Unlined Triangle
- 003-TT-00000 Tied-side Cheeky
- 003-TT-00193 Removable Halter Triangle Bra
- 003-TT-00196 Cheeky

# Handcraft Embroidery



## FABRIC DIRECTION

Shiny Micro #T561901NH



SHP-7609-STP

## CREATIVE DIRECTION



## COLLECTION:

003-TT-00000 Unlined Triangle

003-TT-00000 Tied-side Cheeky

003-TT-00193 Removable Halter Triangle Bra

003-TT-00196 Cheeky

# Nuboheme

As the SS27 swimwear season approaches, we're seeing a captivating blend of bohemian aesthetics and vintage charm. This year's trends embrace earthy tones, playful textures, and intricate designs, ensuring that swimwear is not just functional but also a style statement.

**Material:** -Suede, Washout Denim

**Color Palette:** The collection is dominated by warm, earthy colors like terracotta, sandy beige, and rich browns. These hues evoke a natural feel, connecting wearers to the great outdoors and the laid-back spirit of summer.

**Prints & patterns:** Inspired by the Wild West spirit, this collection emphasizes bold bandana motifs combined with celestial patterns. The focus is on integrating iconic cowboy bandana prints with mystical sun and moon imagery, creating a watchful and adventurous vibe. The design embodies a mesmeric motif that blends rustic Americana with cosmic mystique, perfect for a daring and stylish swimwear look.

**Details:** Beaded Fringing, Shells and natural trims, Sun Motif



Leslie Amon



Banana Moon



Isabel Marant



It's now Cool



It's now Cool

It's now Bikinis



11-6937 TCK  
Winter White



15-1008 TCK  
Bacoli



17-1410 TCK  
Pine Bark



18-4238 TCK  
Copper Brown



18-1861 TCK  
Tomato Pulse



18-1420 TCK  
Deep Mahogany



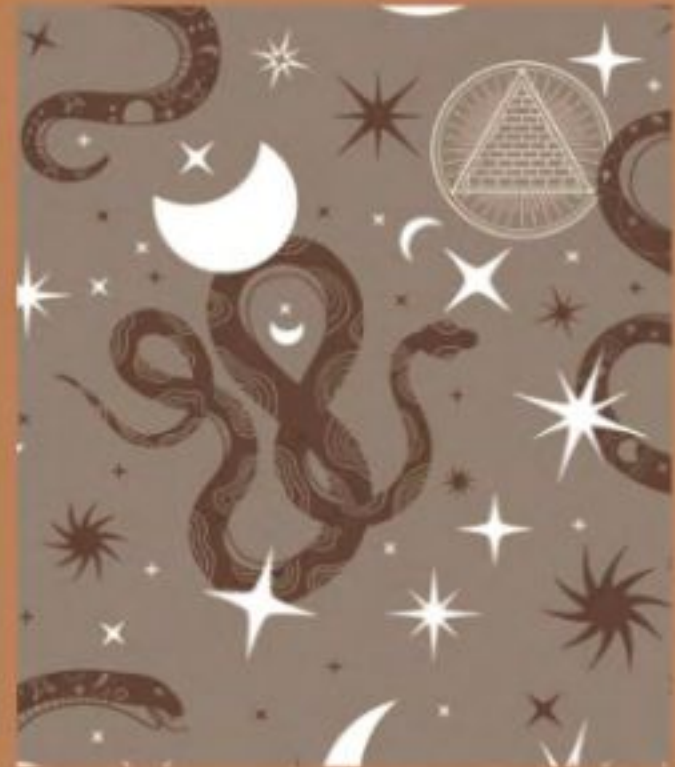
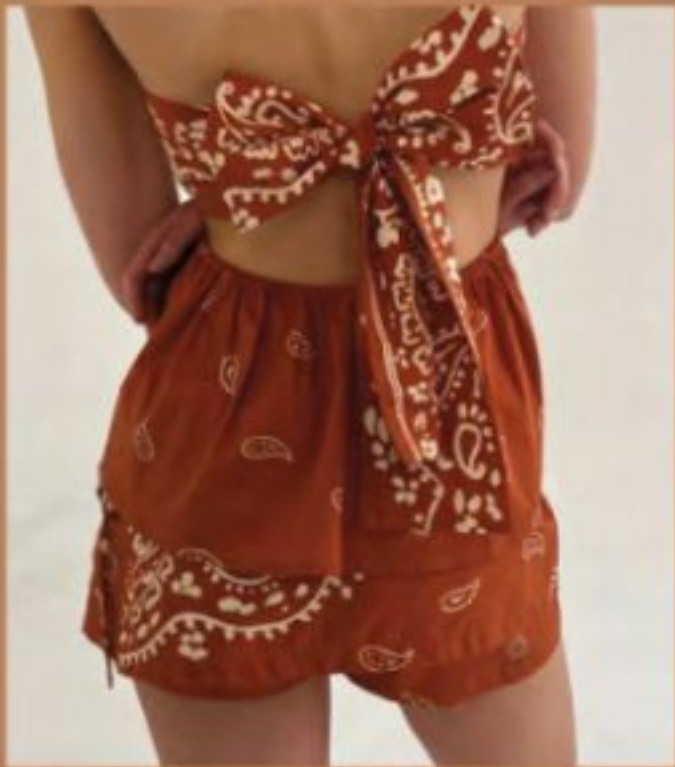
19-2850 TCK  
Deep Ultramarine



18-1280 TCK  
Nebulae



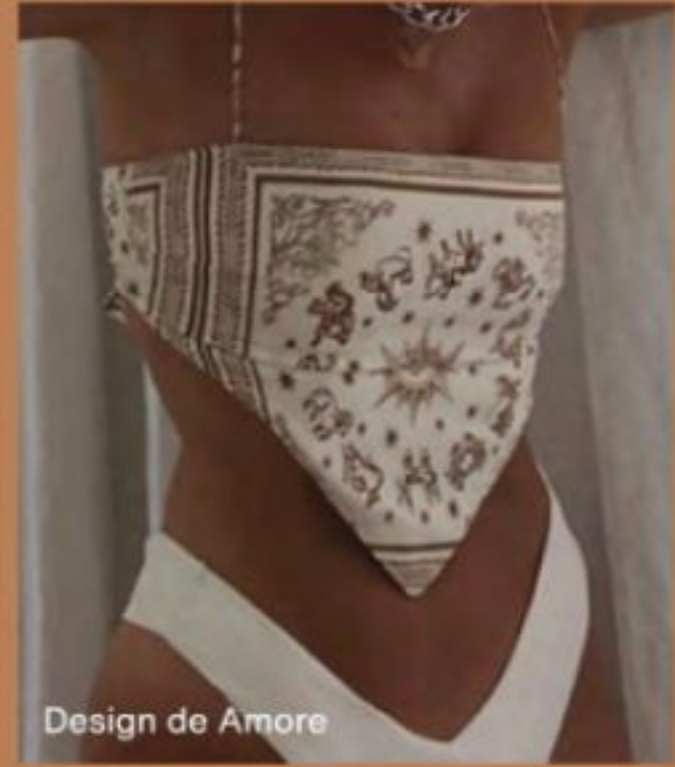
15-0927 TCK  
Pale Gold



The classic paisley returns with a sun-soaked update, transforming from a Western staple to a resort essential. Prints echo the spirit of travel and nostalgia while bordered motifs, intricate linework, and handkerchief placements are reimagined across bikinis, scarves, and coordinated sets. Earthy browns, ocean blues, and soft neutrals lend a relaxed sophistication, while playful styling keeps it youthful and free.



Montce Swim



Design de Amore



It's Cool Now



Next

#Bandana #Celestial



## MATERIALS



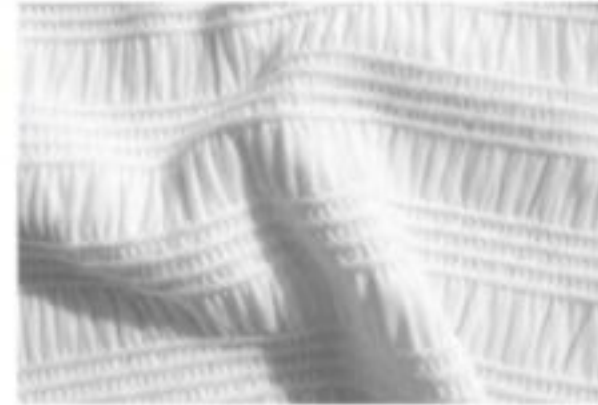
Suede



Denim



Chrochet Knit



Smocked knit

## DETAILS



Tassel & Fringe



Eyelet



Shell Button



Shell Motif

## PRINT & GRAPHIC



Bandana



Plaid



Celastial motif

# Macrame Fringe



## CREATIVE DIRECTION



### COLLECTION:

- 003-TT-00000 Removable Triangle
- 003-TT-00000 Removable Bandeau
- 003-TT-00000 Thong
- 003-TT-00000 Scoop Bra Top
- 003-TT-00000 Tied Side Brief
- 003-TT-00000 Swimsuit

# Reversible Celestial



## CREATIVE DIRECTION



### COLLECTION:

003-TT-00000 Reversible Swimsuit

003-TT-00000 Reversible Bandeau

003-TT-00000 Mid-rise Brief

# Sunset Suede



## CREATIVE DIRECTION



### COLLECTION:

003-TT-00000 Halter Neck Tankini

003-TT-00000 V Shape High Leg Cheeky

003-TT-00000 Removable Triangle Bra

# Sunset Suede



## CREATIVE DIRECTION



### COLLECTION:

- 003-TT-00000 Halter Neck Tankini
- 003-TT-00000 V Shape High Leg Cheeky
- 003-TT-00000 Removable Triangle Bra

# Rustic Trails Suede



## CREATIVE DIRECTION



### COLLECTION:

003-TT-00000 Removable Triangle

003-TT-00000 Boyshort

003-TT-00000 Removable Triangle Bra

003-TT-00000 Tie-Side Bikini

# Lurex



## FABRIC DIRECTION

Lurex Fabric: RB22125



HP-6476-1C-ANM

Lurex Fabric: RB22125



## CREATIVE DIRECTION



## COLLECTION:

003-TT-00095 Balconette

003-TT-00096 Hipster

003-TT-00000 Plunge Control Swimsuit

# Wild Wild West



**FABRIC DIRECTION**  
Micro #ISPT7016RP

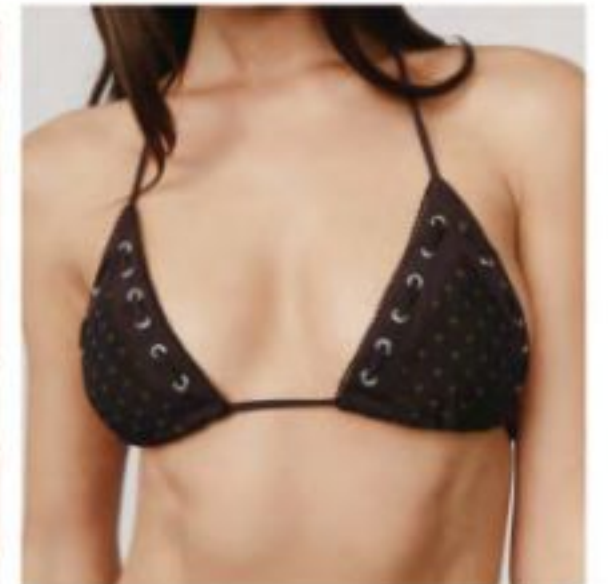


SHP-7533-2-C



SHP-7364-ANM

**CREATIVE DIRECTION**



**COLLECTION:**

- 003-TT-00000 Halter Neck Scarf Top
- 003-TT-00000 Tie Side Bikini
- 003-TT-00000 Removable Triangle Bra
- 003-TT-00000 Tie Side Bikini

# Denim Patchwork



## CREATIVE DIRECTION



### COLLECTION:

003-TT-00000 Removable Triangle Bra

003-TT-00000 Tie side Bikini

003-TT-00000 Padded Balconette

003-TT-00000 Tied Side Thong

# Sun-soaked Paisley

## CREATIVE DIRECTION



SS 27 SWIM TREND



### COLLECTION:

- 003-TT-00000 Balconette
- 003-TT-00000 Cheeky
- 003-TT-00000 Scraf bikini Top
- 003-TT-00000 Unlined Halter Top
- 003-TT-00000 Highleg Cheeky
- 003-TT-00000 Bandeau Swimsuit

# 3D ShPaisley

---



**COLLECTION:**  
003-RR-00095 Longline Bandeau  
003-RR-00250 Highwaist Brief

## CREATIVE DIRECTION



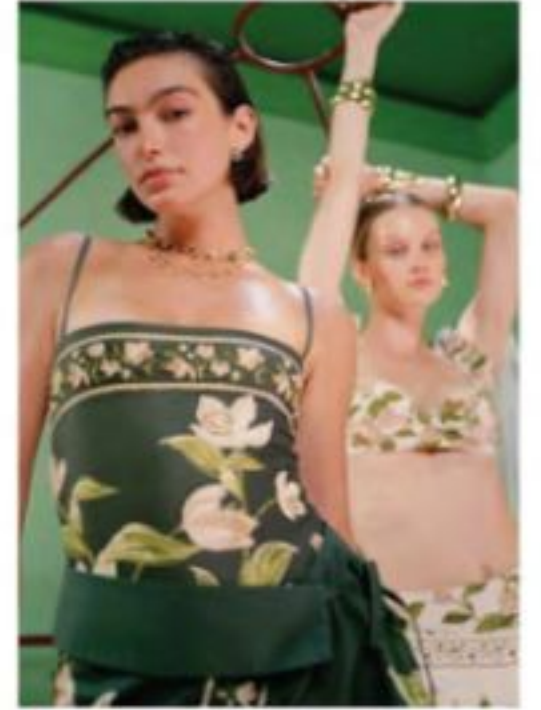
**SS 27 SWIM TREND**

# 3D ShPaisley



**COLLECTION:**  
003-RR-00095 Longline Bandeau  
003-RR-00250 Highwaist Brief

## CREATIVE DIRECTION



**SS 27 SWIM TREND**

# Dark Celastial



## FABRIC DIRECTION

Shiny Micro #T561901NH



## CREATIVE DIRECTION



SOP-0583-2-OTH



## COLLECTION:

003-TT-00000 Plunge Swimsuit

003-TT-00000 Halter Bandeau

003-TT-00000 Tie Side Cheeky

003-TT-00000 Removable Triangle Bra

003-TT-00000 Tie Side Bikini

# Bonded Keychain trim



## FABRIC DIRECTION

Shiny Micro #T561901NH



SOP-0583-2-OTH

## CREATIVE DIRECTION



## COLLECTION:

003-RR-00499 Front Closure Halter Neck Bra

003-RR-00500 Thong

003-RR-00501 Halter Cutout Swimsuit

SS 27 SWIM TREND

# Animal Instinct



## FABRIC DIRECTION

Shiny Micro #T561901NH

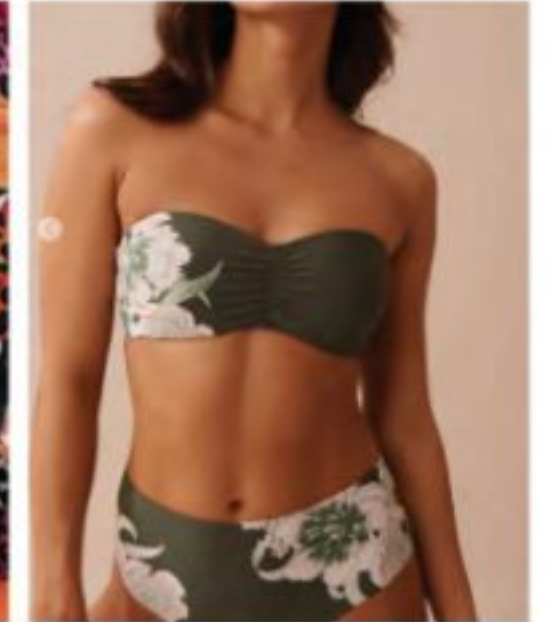


SHP-7114-FLR-ANM

Lurex Fabric: RB22125



## CREATIVE DIRECTION



## COLLECTION:

- 003-TT-00000 Baby Sleeve Crop Top
- 003-TT-00000 Cheeky
- 003-TT-00000 Wide Strap Removable Triangle Bra
- 003-TT-00000 Butterfly Cheeky Brief
- 003-TT-00000 Placement Removable Bandeau
- 003-TT-00000 Mid-rise brief
- 003-TT-00093 Plunge Push Up T-shirt Bra
- 003-TT-00094 Mid Waist Brief

# Rebel Waves

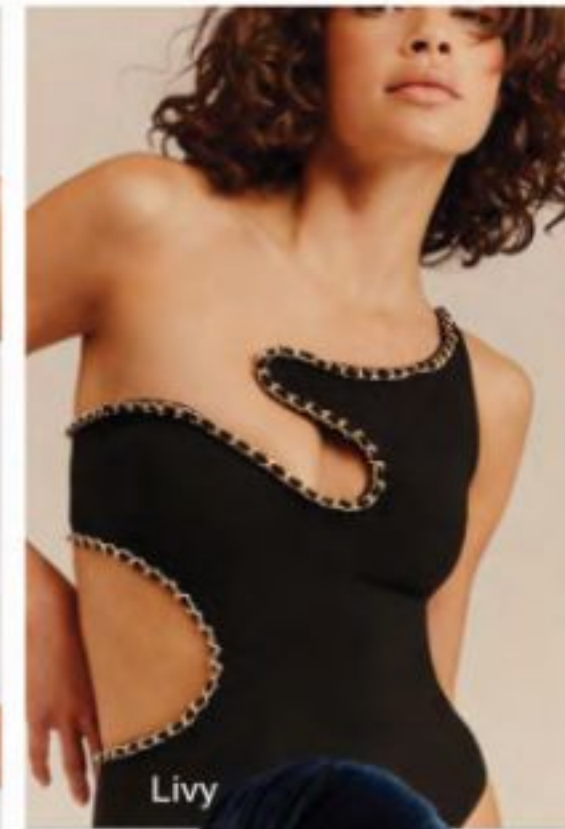
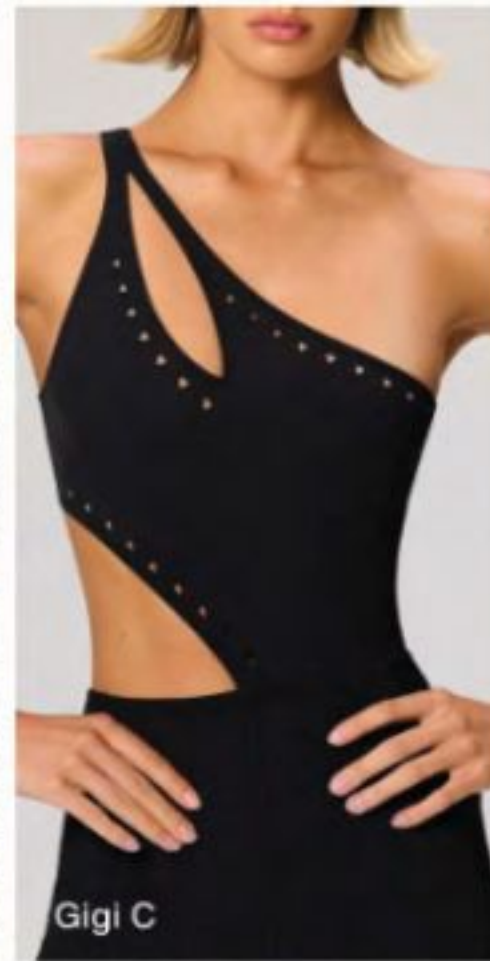
Embracing the revival of goth and punk aesthetics amidst societal upheaval, this swimwear collection embodies defiance and empowerment. A rich palette featuring raven blacks, deep charcoals, and fiery metallics amplifies both mood and intensity, establishing a bold statement in swim fashion.

**Silhouette:** Asymmetrical cutouts, transform class styles with daring strappy configurations. This combination blends sensuality with strength, turning swimwear into a confident armor.

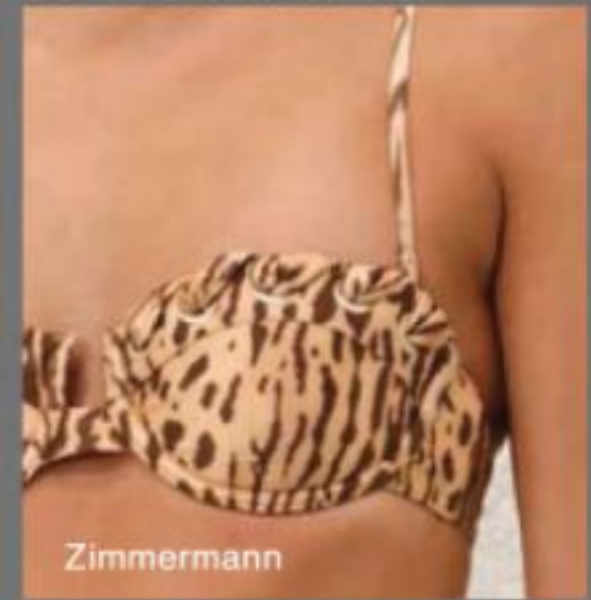
**Color & textured:** Ink Black, high-gloss finishes, metallics, and leather-like coatings.

**Prints & patterns:** Mixed Animal, Gothic Hot Fix

**Details:** Asymmetric ties, hardware, layered mesh, eyelets, chains, studs, and found-object accessories for a raw, edgy, curated look.



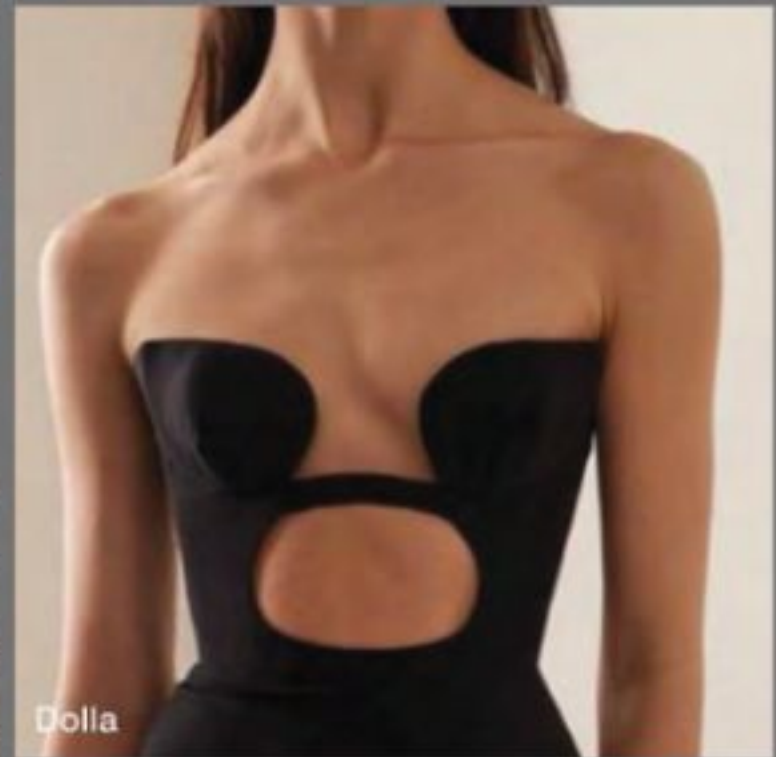
SS 27 SWIM TREND



Zimmermann



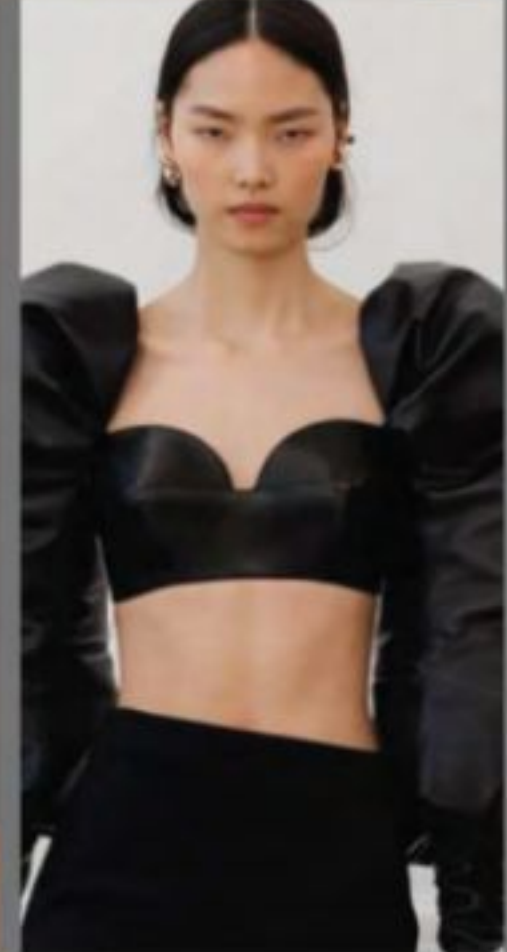
Dua Lipa



Dolla



Its now cool



Jacquemus



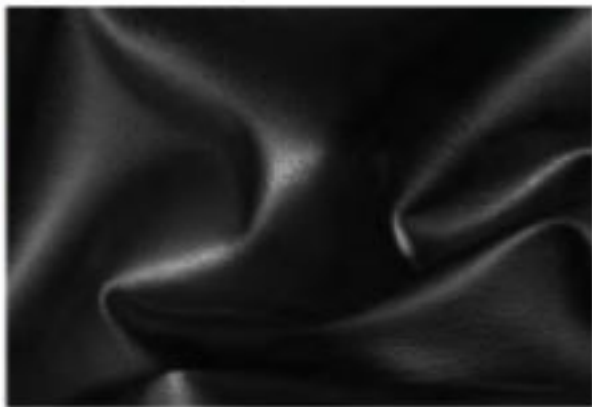
Oh Polly



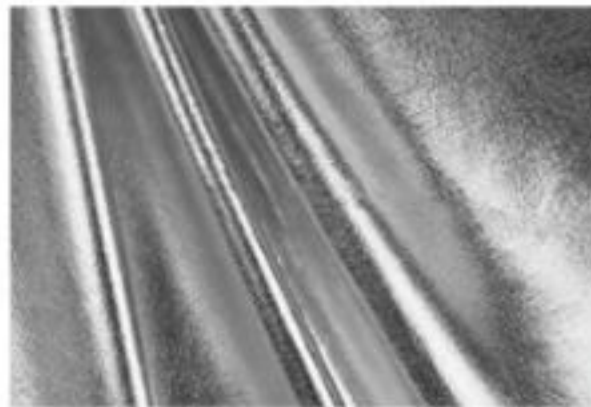
Jaded London



## MATERIALS



Black Faux Leather



HighShine Metallic



Lasercut



Loose Knit

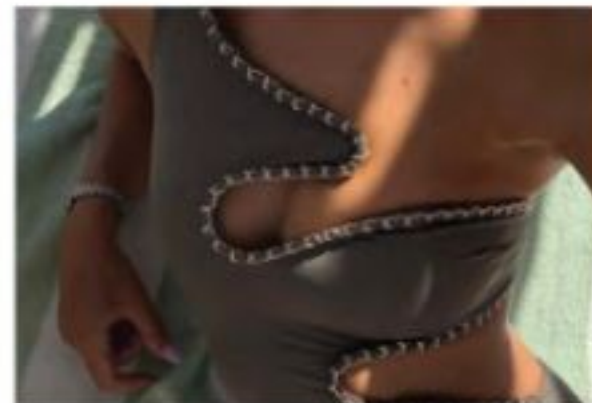
## DETAILS



Silver Studs



Eyelet



Chain



Geo Lasercut

## PRINT & GRAPHIC



Snake Abstract



High-gloss Foiled Print



Gothic & Celestial

# Dark Celastial



## FABRIC DIRECTION

Shiny Micro #T561901NH



SOP-0583-2-OTH



## CREATIVE DIRECTION



## COLLECTION:

- 003-TT-00000 Plunge Swimsuit
- 003-TT-00000 Halter Bandeau
- 003-TT-00000 Tie Side Cheeky
- 003-TT-00000 Removable Triangle Bra
- 003-TT-00000 Tie Side Bikini

# *Iridescent Foil Leopard*

---



## **FABRIC DIRECTION**

Foiled Leopard #DA50071NH

+SC30001PH-L30



## **COLLECTION:**

003-SS-00135 One-shoulder Bodysuit

003-SS-00136 One-shoulder Crop Top

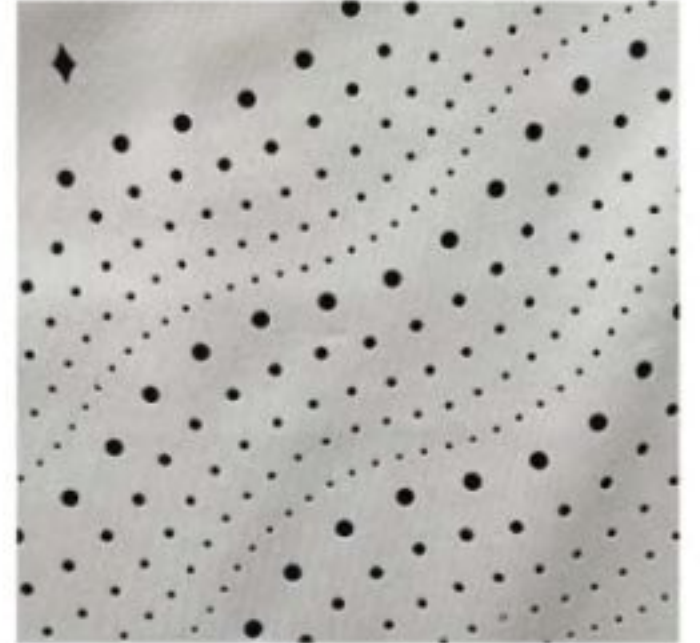
003-SS-00137 Cut out Thong

# Graphic in Motion

---



FABRIC DIRECTION  
Micro #ERA10254



**COLLECTION:**  
003-SS-00160BT Bandeau Swimsuit  
003-SS-00161BT Mono Wire Bra  
003-SS-00162BT Highwaist Thong

SS 27 SWIM TREND

# Iridescent Foil Leopard

---



## FABRIC DIRECTION

Foiled Leopard #DA50071NH

+SC30001PH-L30



## COLLECTION:

003-SS-00135 One-shoulder Bodysuit

003-SS-00136 One-shoulder Crop Top

003-SS-00137 Cut out Thong

# Weave Lacing Lasercut

---



## FABRIC DIRECTION

Foiled Leopard #DA50071NH

+SC30001PH-L30



## COLLECTION:

003-SS-00135 Plunge Bralette

003-SS-00136 Hipster Bikini

003-SS-00137 Monokini Swimsuit

# Dark Celastial



**FABRIC DIRECTION**  
Mesh #HX82002



SHP-7535-ANM

**CREATIVE DIRECTION**



**COLLECTION:**

- 003-TT-00000 Plunge Swimsuit
- 003-TT-00000 Halter Bandeau
- 003-TT-00000 Tie Side Cheeky
- 003-TT-00000 Removable Triangle Bra
- 003-TT-00000 Tie Side Bikini

# Prairie Girl

The fashion world is buzzing with excitement over the delightful charm of cottagecore! This fresh trend embraces a sweet, feminine aesthetic that celebrates all things beautiful and romantic. In this new season, we're seeing collections filled with lovely underwired styles in floral prints, playful bikini sets, and timeless cover-ups that make you feel fabulous.

**Silhouette:** Think lingerie-inspired bikinis, comfy drawstring tops, and charming smocked sets that flatter all shapes.

**Color & texture:** Get ready for soft, pastel palettes that perfectly capture that delicate vibe, along with dreamy washout denim.

**Prints & patterns:** You'll fall in love with the gentle blooms of ditsy florals, classic gingham, and cheerful polka dots that add a touch of whimsy to any outfit.

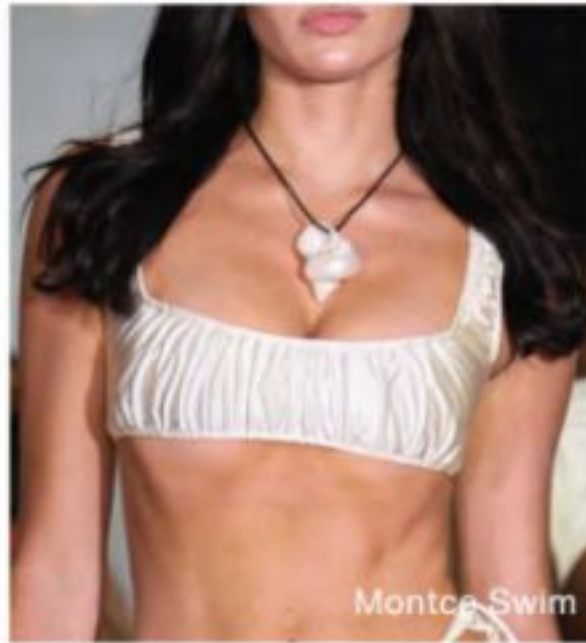
**Details:** Features like romantic ties, playful lettuce edging, and intricate ruching are now seen as symbols of strength rather than fragility. Embracing the idea of "Empowered Elegance," this movement celebrates softness as a playful, feminine design statement.



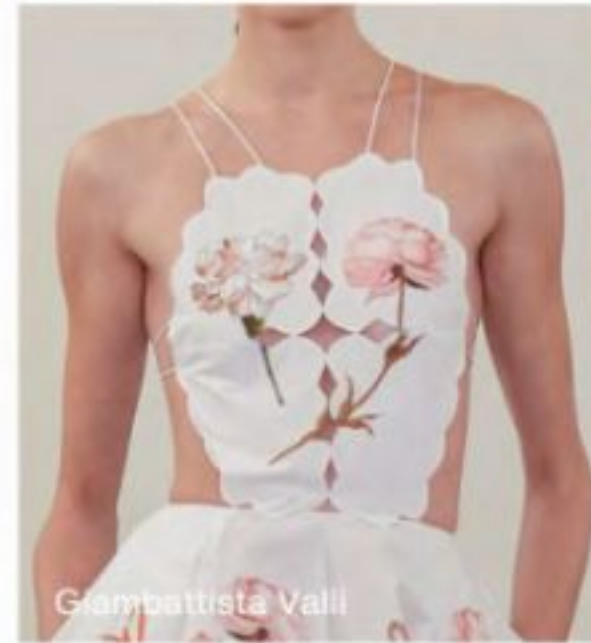
Erdem



Dippin daisy



Montca Swim



Giambattista Valli



SS 27 SWIM TREND



With jean



Poony



Hermosa



Frankies Bikinis



Zimmermann



Juliet



Chloe



## MATERIALS



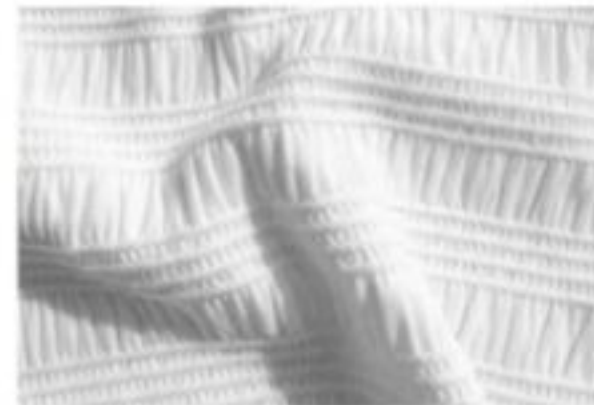
Waffle



Eyelet knit fabric



Seersucker



Smocked knit

## DETAILS



Lettuce Edging



Picot Trim



Ruffle



3D floral applique

## PRINT & GRAPHIC



Scattered floral



Modern checks



Retro Bloom



Dot Revival

# Floral Waffle



**FABRIC DIRECTION**  
Waffle #ERC30691PVE.



HP-9752-2-FLR

**CREATIVE DIRECTION**



HP-9739-2-FLR

**COLLECTION:**

- 003-TT-00000 Removable Triangle Bra
- 003-TT-00000 Tie side Cheeky
- 003-TT-00000 Demi Underwire Bra
- 003-TT-00000 High Leg Brazilian

# Cross My Heart



**FABRIC DIRECTION**  
Micro #ISPT47016RP



SHP-7437-3-FLR

**CREATIVE DIRECTION**



**COLLECTION:**

- 003-TT-00000 Wide Strap Bralette
- 003-TT-00000 Tie side Cheeky
- 003-TT-00000 Skirt
- 003-TT-00000 Frill Top Scoop Bralette
- 003-TT-00000 Highrise Frill Thong

# Cross-Stitching Denim



FABRIC DIRECTION  
Micro #ISPT47016RP



SHP-7562-FLR

CREATIVE DIRECTION



M774



M831



**COLLECTION:**

003-TT-00000 Padded Balconette

003-TT-00000 Boyshort

003-TT-00000 Cutout Swimsuit

# 3D Laser Cut Floral



**FABRIC DIRECTION**  
Micro #P525



3D laser-cut with Multi color beading

**CREATIVE DIRECTION**



**COLLECTION:**

003-TT-00000 Removable Bandeau

003-TT-00000 Bikini

003-TT-00000 Removable Triangle

003-TT-00000 Tied Side Bikini



# PRINT DIRECTION

