

RECYCLING
ENMA

Excellence in Engineering

EnMa

F

EnMa F Series
Four Shaft Shredder



EnMa F Series

Four Shaft Shredder



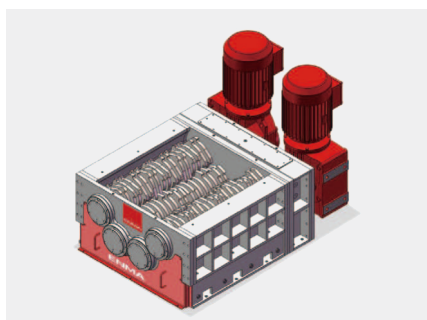
High throughput, continuous cutting, suitable for demanding applications

EnMa F Series is a low-speed, high-efficiency machine composed of four rotating shafts. The machine adopts a modular design, so the speed, torque, screen, blade and cutting system can be individually designed for each industrial shredder according to the customer's requirements for the recycled materials. The sturdy structure and wear-resistant blades make this shredder particularly suitable for multi-shift continuous operation. This model is particularly effective for difficult recycling applications.

The four-shaft shredding will stop immediately if foreign objects enter during the running. This prevents damage to the shredder blades. At the same time, the drive can also reverse the cutting rotor. These unique safety features are particularly useful for some unusual materials.

Advantages

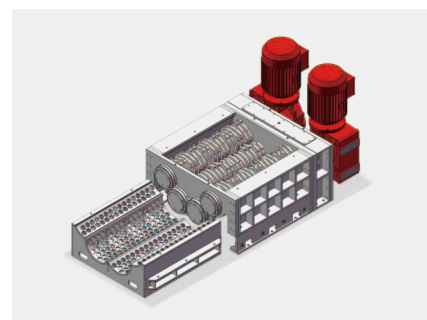
- Output of material particles, passing through the screen, can reach 25 to 150mm.
- Can be used as a single-step crushing system or a fine crushing in a multi-stage crushing system.
- Single machine power ranges from 2X22KW to 2x160KW.
- For particularly difficult applications.
- Very compact and robust design.
- High availability and process stability.
- Low noise and dust emissions.



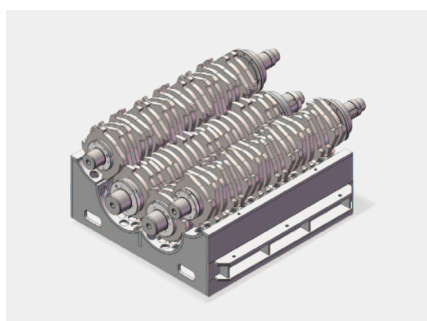
Drive



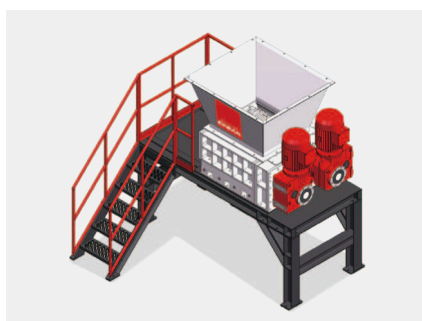
System Combination



Modular design



Cutting tools



Different applications

EnMa F Series

General technical features

Model	EnM F350-1000	EnMa F350-1200
Overall dimension in mm	2890x1450x2750	2810x1450x2750
Machine weight in kg approx.	5500	6000
Feed opening in mm approx.	1000x1000	1200x1000
Rotor diameter in mm	350	350
Standard motor in KW	18.5x2	22x2
Number of rotor blade	19x4	24x4
Thickness of rotor blade in mm	25	25
Rotor speed in rpm	15-25	15-25
Standard screen in mm	80	80

Mission:
Convert waste into sustainable energy
or valuable materials

www.enma.fr
info@enma.fr

ENMA reserves the right of final instruction and modification for all the content.
All the products pictures, appearance, technical parameters and function description shall refer
to the physical objects. If there is any configuration and parameter adjustment due to technical
updates, you will not be notified additionally.