

RECYCLING
ENMA

Excellence in Engineering

EnMa

T

EnMa T Series
Twin Shaft Shredder



EnMa T Series

Twin Shaft Shredder



Pre-shredding, high output and quality

The success of a good recycling line depends largely on the first stage, pre-shredding of difficult materials. EnMa T Series not only responds to this problem reliably, but also optimally prepares the material for the second stage, which involves handling large quantities of material.

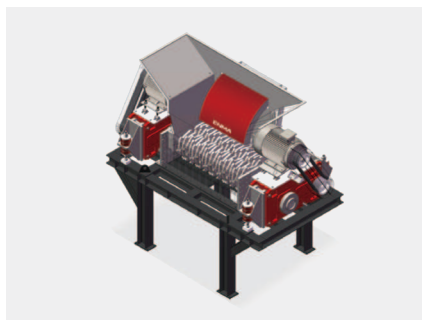
The powerful features and unique design of this shredder set it apart from the competition. The EnMa T Series is easy to maintain, has a higher output and offers excellent operational reliability even in the most demanding applications. The EnMa T Series' blades cut the materials into strips, the size of which is determined by the width of the blades (available in 50, 70 and 100mm). The coupling shaft is a key component of the shredder, which allows maintenance without disassembling the gearbox, making it easier to change the blades and significantly reducing downtime. In the second recycling stage, the pre-shred material can be optimally processed through the equipment such as EnMa T Series shredder, which evenly shreds the feed material to the desired particle size.

Advantages

- Output: "long strips" of material with a width of 25-75mm.
- Can be used as a pre-crusher in a crushing system or as a bale opener by replacing the rotor.
- The motor power of a single machine ranges from 22 to 500KW.
- Suitable for a variety of applications.
- Robust and durable machine design.
- Automatic detection of impurities and protection design of the machine, rotor and cutter blades reversal.
- Equipped with a hydraulic pusher for higher output.
- The cutter has a polygonal rotor shaft for high-power transmission.
- Faster shaft replacing due to the use of a coupling shaft.
- Stable cutting blades operation for precise cutting.



Twin-shaft shredding rotor



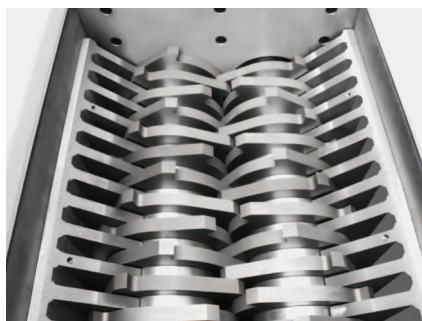
Force feeding device



Welded machine body



Drive



Fixed blade

EnMa T Series

General technical features

Model	EnMa T450-800	EnMa T450-1200	EnMa T450-1400	EnMa T550-1200	EnMa T550-1600
Machine weight in kg approx.	4700	6700	8500	12000	15000
Chamber dimension in mm	800x800	1200x800	1400x850	1200x 1000	1600x1000
Rotor diameter in mm	450	450	450	550	550
Standard motor in kw	2x22	2x30	2x37	2x55	2x55/75
Number of shaft	2	2	2	2	2
Number of rotor knife on main shaft	2x13	2x20	2x23	2x10	2x13
Thickness of rotor knife in mm	30	30	30	60	60
Rotating speed in rpm	10-15	10-15	10-15	15-20	15-20
Overall dimension	3000x1250x2150	3650x1380x2570	3850x1400x2570	3500x2200x3750	3900x2200x3750

Mission:
Convert waste into sustainable energy
or valuable materials

www.enma.fr
info@enma.fr

ENMA reserves the right of final instruction and modification for all the content.
All the products pictures, appearance, technical parameters and function description shall refer
to the physical objects. If there is any configuration and parameter adjustment due to technical
updates, you will not be notified additionally.