

PORCELANOSA

TENANT PROFILE

CONTACT FOR DETAILS

JOSH BEAVER

(704) 373-9797

Josh@TheNicholsCompany.com



ABOUT

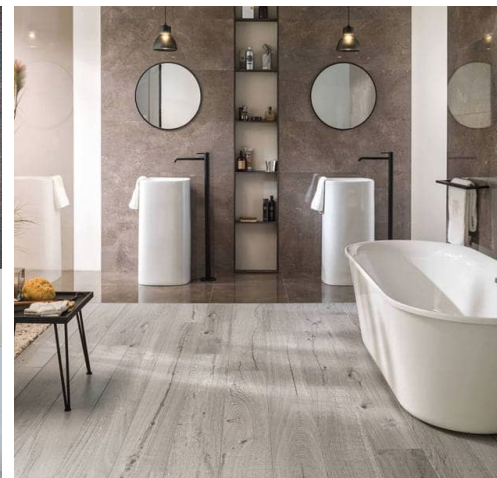
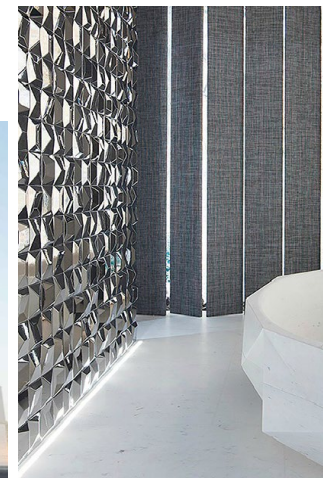
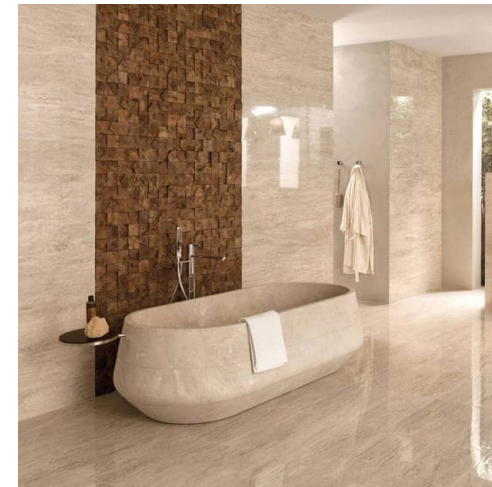
Porcelanosa was founded over 40 years ago in a small village by the Mediterranean Sea in Castellon, Spain. Since then, they have been providing architectural and design solutions to consumers and the A&D community with unparalleled innovation, quality, and service. The family who originally founded Porcelanosa back in 1973 still runs it today under the same core values of work ethics and integrity.

With 30 showrooms in the United States and Canada, Porcelanosa is a luxury lifestyle brand offering a wide selection of tiles and mosaics for modern bathrooms, kitchen cabinetry designs, hardwood and laminate flooring, cutting-edge bathroom and sanitaryware, natural stone slabs, installation materials, exterior facades, and their revolutionary KRION® Solid Surface material.

By providing trendsetting cutting-edge designs of unparalleled beauty and refinement, uncompromising quality, technologically superior products and dependable services to its clients, the company has solidified its standing as a supplier of choice for these products. Through a company-owned and independent distribution network, Porcelanosa continues to rise above the rest in its core product categories by anticipating and delivering inspiring and advanced solutions to the needs of an ever evolving market.

SITE CRITERIA

- 2,500 - 4,000 SF
- Freestanding buildings or sites preferred
- Looking for space in South End, SouthPark, Myers Park, and Eastover
- Great co-tenancy, surrounded by home goods brands
- Good accessibility, traffic counts, and visibility
- Excellent signage opportunities
- Seeking a 10-year initial term with options
- Immediate timing
- Seeking to lease or purchase



CALIFORNIA

Anaheim - South State
Glendale - San Fernando
Hermosa Beach - Pacific Coast Hwy
San Deigo - Miramar Road
San Jose - East Brokaw Road
San Francisco - Division Street
Walnut Creek - N. Broadway
West Hollywood - Beverly Boulevard

COLORADO

Denver - Design District

CONNECTICUT

Riverside - East Putnam Avenue

FLORIDA

Miami - NW 13th Terrace
Miami - Design District
Pompano Beach - North Powerline

GEORGIA

Atlanta - Buckhead Square

ILLINOIS

Chicago - Luxe Home
Chicago - Lincoln Park

MARYLAND

North Bethesda - Rockville Pike

MASSACHUSETTS

Boston - Design Center
Chestnut Hill - Boylston Street

NEW JERSEY

East Brunswick - Route 18 North
Paramus - Route 17 South
Ramsey - Route 17 North

NEW YORK

Manhattan - Fifth Avenue
Brooklyn - Industry City
Westbury - Old Country Road

PENNSYLVANIA

King of Prussia - West Dekalb Pike

TEXAS

Houston - Richmond Ave
Dallas - Hi Line Drive
Dallas - Emerald Street
Austin - E. 50th Street

VIRGINIA

Tysons - Leesburg Pike

WASHINGTON

Seattle - Spring Street

WASHINGTON, DC

Washington DC - Connecticut Ave



PORCELANOSA

LEARN MORE
WWW.PORCELANOSA-USA.COM

CONTACT FOR DETAILS
JOSH BEAVER
(704) 373-9797
Josh@TheNicholsCompany.com

www.TheNicholsCompany.com
1204 Central Avenue, Suite 201
Charlotte, NC 28204

