

Splash and Dash



GROOMERIE & BOUTIQUE

Tenant Profile

Contact for Details:

John Hadley

(704) 373-9797

JHadley@TheNicholsCompany.com



TheNicholsCompany.com

About

At Splash and Dash, they believe dogs should be treated as family members and equals. They deserve to get the same enjoyment out of life, to feel comfortable and clean, and to eat delicious foods that provide them with the nutrients and energy they need. In other words, "Play dirty - Live clean".

Since 2009, Splash and Dash has been providing dog-loving services to thousands of dogs and their pet parents. Their unique treatments, membership plans, and care options will leave your dog feeling relaxed, refreshed, and energized every time they leave the shop.

Splash and Dash offers a luxury dog spa experience and a boutique with natural treats and chews, the best quality ingredients for your furry family member.

Space Criteria

- Seeking 1,000 - 1,400 SF
- Seeking space in Charlotte MSA
- 2nd generation space preferred, if not then vanilla box
- Strong foot traffic trade area mix of offices and retail with surrounding up-scale residential
- Inline space in grocery-anchored shopping centers preferred
- National/regional co-tenants, both food and retail (Starbucks, Dry Cleaners, Pizza Parlor, Grocery Stores, Health Clubs)
- Strong visibility, easy ingress and egress access
- Parking: Ample parking, lot with safe access to business; street parking not permitted
- Traffic Counts: minimum of 15,000 VPD along main frontage road
- Residential Population: > 125,000 within 8-mile radius
- Lease Term: 5 Years with (2) 5-Year Options



Floor Plan





Spa Services

Unlimited Bath Membership
Safety First Grooming
Baths, Haircuts, Nails & More
Dental Treatments



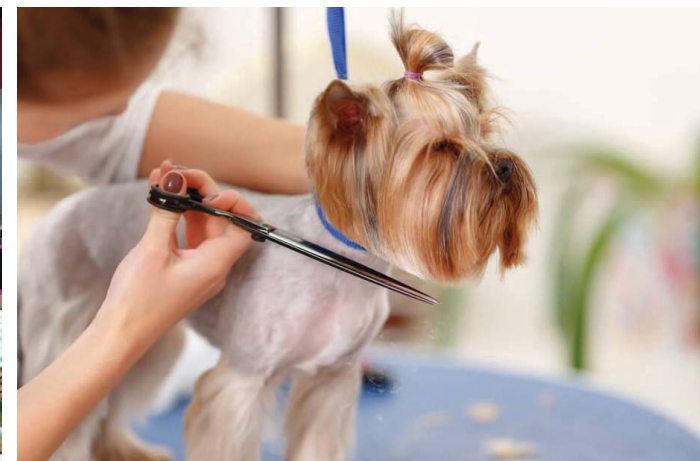
Wellness Supplies

Clean Living Dog Products
Eco-Friendly Dog Accessories
Collars & Leashes
Dog & Cat Food
Natural Treats & Chews
Beds, Bowls & Travel



Memberships

Limitless Bath & Brushing
Flexible & Convenient
Zero Hassles
Wellness Checks Included





Heidi Hillman
Franchise Owner

Heidi Hillman is an NC State graduate who has loved living in Charlotte and watching it grow for the last 14 years. She is well-connected in the local community and after opening and running operations for many successful small businesses in the Queen City, her love for dogs brought her to this next venture; multiple units of Splash and Dash! Heidi currently resides in the NoDa neighborhood of Charlotte and when she isn't growing a company, you can find her traveling with her husband or taking long walks with her dog Winnie!