

EASTOVER • MYERS PARK

LAUREL MARKET



DELI • SUNDRIES • WINE • BEER

Tenant Profile

Contact for Details:

John Nichols

(704) 373-9797

JNichols@TheNicholsCompany.com

Lauren Bremer

(980) 266-6911

Lauren@TheNicholsCompany.com

TheNicholsCompany.com



About

Located in the heart of Charlotte's Myers Park neighborhood, Laurel Market Deli is a beloved neighborhood store and deli that has been serving the community for over 30 years. A neighborhood store and deli specializing in creating delicious made-to-order sandwiches, salads, and sides in Charlotte NC.

This family-owned establishment combines the convenience of a neighborhood market with the culinary excellence of a gourmet deli. The deli is renowned for its extensive menu of over 30 different hot and cold sandwiches made with fresh, gourmet ingredients. From their signature "Rise & Shine" sandwich - a hearty creation with grilled chicken, refried black beans, and fresh vegetables that's "the size of a grown man's forearm" - to Italian-inspired combinations with prosciutto, capicola, and artisanal cheeses, every sandwich is crafted with care and creativity.

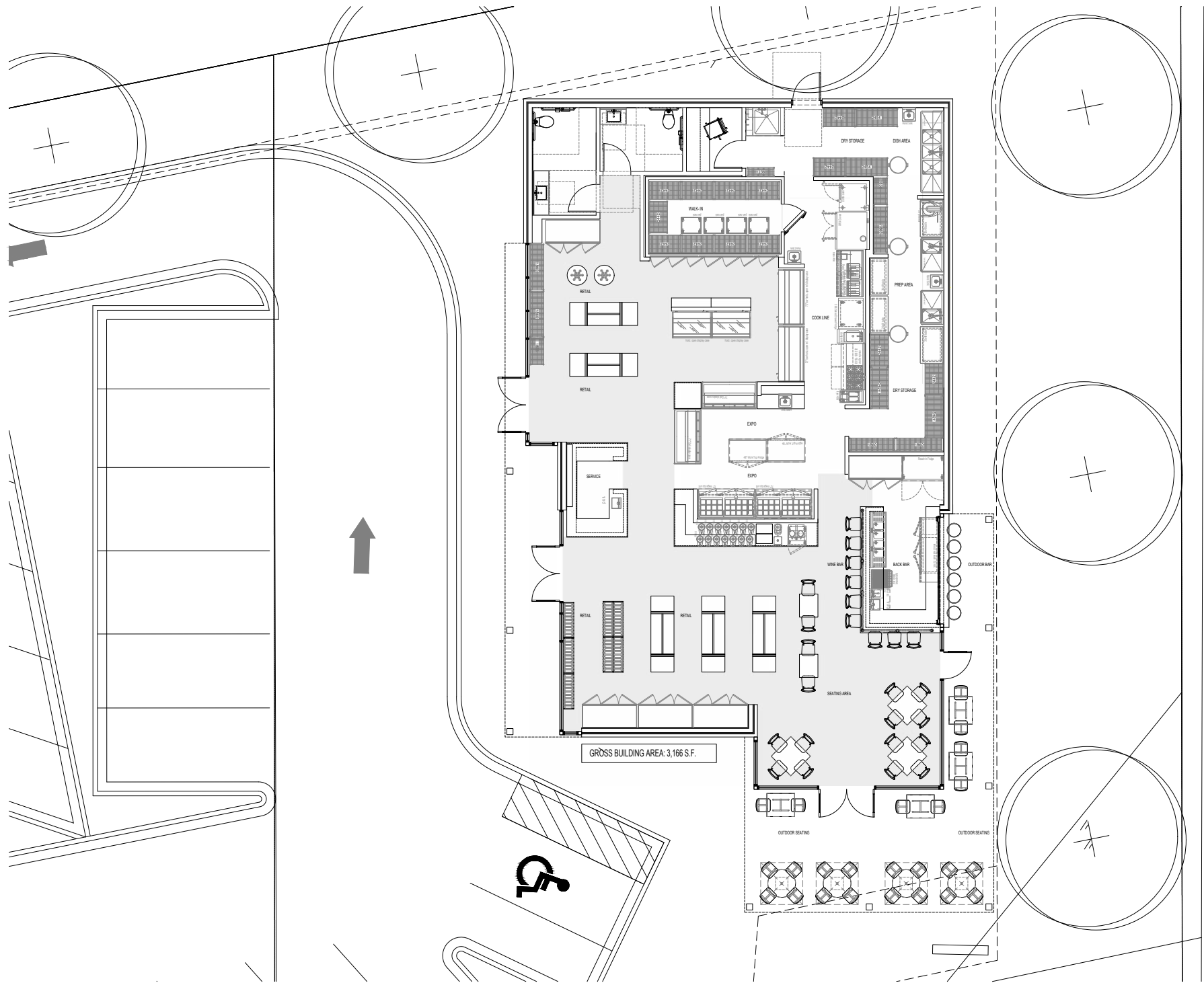
Beyond sandwiches, Laurel Market offers breakfast wraps, fresh salads, homemade sides like pasta and potato salad, and decadent desserts. The market side operates extended hours, making it a convenient stop for neighborhood essentials, while the deli serves breakfast and lunch daily from 7:00 AM to 3:00 PM.

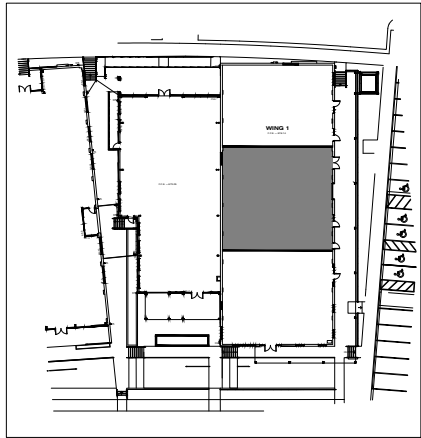
Whether you're grabbing a quick breakfast on your way to work, enjoying a leisurely lunch, or picking up dinner to go, Laurel Market Deli represents the best of Charlotte's neighborhood dining - where quality ingredients, generous portions, and friendly service have made it a local institution for over three decades.

Space Criteria

- Seeking 3,000 - 3,500 SF
- **Preferred Locations:** Charlotte MSA
- **Parking:** Adequate parking

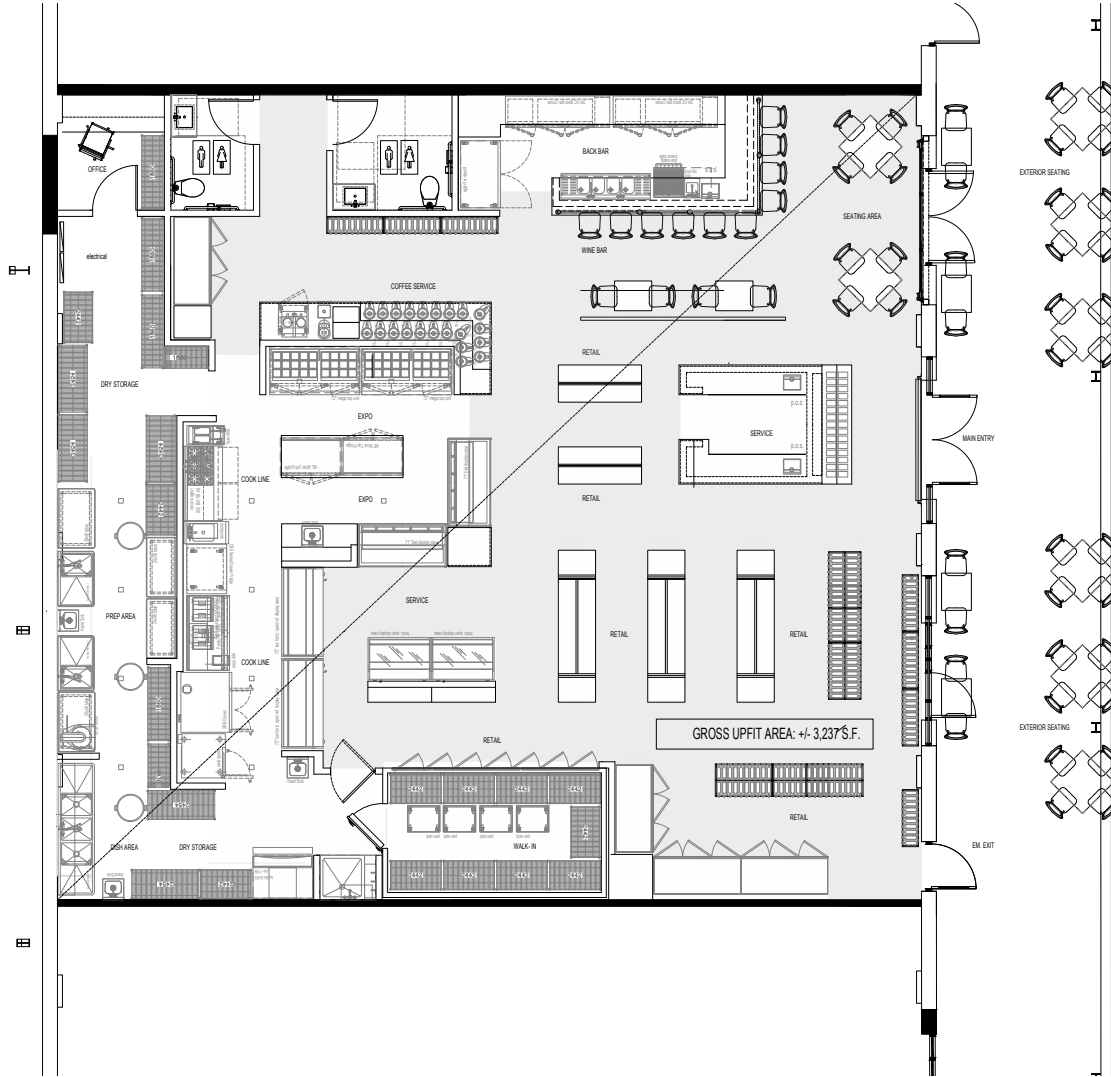






KEY LOCATION PLAN 2

ATTENTION: THE PLAN ILLUSTRATED AREA
IS PROVIDED WITHOUT THE OPTICAL CURRENT DIMENSIONAL INFORMATION AND IS SUBJECT TO INVESTIGATION.
THEREFORE, THE INFORMATION SHOWN MAY BE
SUBJECT TO CHANGE AND SHOULD BE CONSIDERED AS
PRELIMINARY IN NATURE.



EXTERIOR SEATING

EXTERIOR SEATING

