



## Power magnet

Pain can occur in different forms and in different regions of the body.

Millions of people worldwide suffer from acute or even chronic pain. This can severely impact their quality of life.

**PAINflex®** offers you a small, drug-free, natural product, a magnet, that can help relieve various symptoms of acute and chronic pain. To relieve pain, the small magnet can be attached either to clothing with a clothing clip or directly to the skin with an adhesive film.

This product is an alternative to painkillers, anti-inflammatories, and other oral medications! It's designed to be used anytime, anywhere. It works by stimulating blood circulation, which can relieve muscle pain or tension in your body.

### Applications?

The **PAINflex®** Powermagnet has a variety of applications, including circulatory disorders, arthrosis/arthritis, lumbago, muscle cramps and tension, bruises and sprains, tendonitis, varicose veins, tennis elbow, sinusitis, leg and knee problems, and neck, shoulder and back pain.

### How does it work?

The **PAINflex®** Power Magnet is a concentric magnet that is 100% natural and safe. The powerful, patented 3000+ Gauss deep magnet consists of alternating polarity circuits designed to influence nature's healing processes. The concentric magnet causes an increase in local blood flow (also known as the Hall effect), accelerating the body's natural healing processes and relieving pain. The **PAINflex®**

Power magnets are in a unique configuration of both constant and gradient magnetic fields

This results in improved blood circulation, reduced swelling, and relief from chronic (back) pain. This is based on various biological mechanisms:

**Magnet** → Dilation of blood vessels → Increased blood flow, oxygen levels & nutrients → **Pain relief**

**Magnet** → Stimulation of nerves → Heat generation → **Pain blockade**

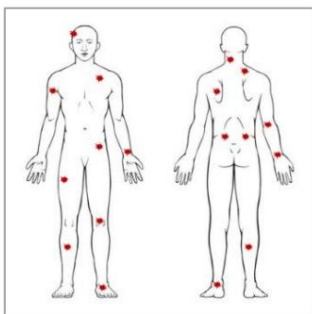
### Handling and application?

The **PAINflex®** Power Magnet is discreet and easy to use. Your **PAINflex®** Power Magnet comes in a practical box and consists of three components:

1. The golden **Painflex®** Power Magnet
2. A clothes clip (with a rounded surface for easy handling) and
3. A pack of 10 round adhesive films



There are many **characteristic pain points** in your body, marked by **red stars** in the image on the left. The **PAINflex®** Power Magnet should be placed directly in the center of the painful area, which you can easily locate yourself with firm finger pressure. There are two ways to attach the **PAINflex®** Power Magnets for use:



**Application with clothing clip:** Use firm finger pressure to locate the center of pain, then position the gold magnet in the center of the painful area, directly against your skin. Attach the magnet to the outside of your clothing fabric using the clothing clip. You can easily adjust the position. Make sure you place the magnet in the correct orientation: The south pole (indicated by the notch, Figure 1 above) must always face your body.

**Application with adhesive film:** First, peel off the backing paper from the adhesive disc, then place the magnet centrally on the adhesive side. Make sure you place the magnet in the correct orientation: The south pole (indicated by the notch, Figure 1) must always point toward your body. The magnet is now stuck, so you can place this side directly on the

at the pain center. Once placed on your skin, the adhesive disc holds the magnet in place. To avoid irritation of sensitive skin, the adhesive film should ideally be replaced daily. Thanks to the circulation-promoting effect of the **PAINflex®** power magnets, you'll feel a naturally occurring, pleasant warmth after just a few hours. The initial application interval can be extended to up to several days if necessary.



### Contraindications/indications?

**PAINflex®** Power Magnets are strong but fragile and should be handled with care. If dropped onto a hard surface, they can chip and become damaged. Never place **PAINflex®** Power Magnets on an open wound. Never use if you have a pacemaker. If you are pregnant, consult your doctor first. There are no known adverse side effects of **PAINflex®** Power Magnets.



Registered with the German Patent and Trademark Office under 399 851 31 –  
European Union Trademark 001 885 706 – Patent number: US 9,943,699.B2



Warning: Pacemaker  
Do not bring near,  
Distance 10 mm

