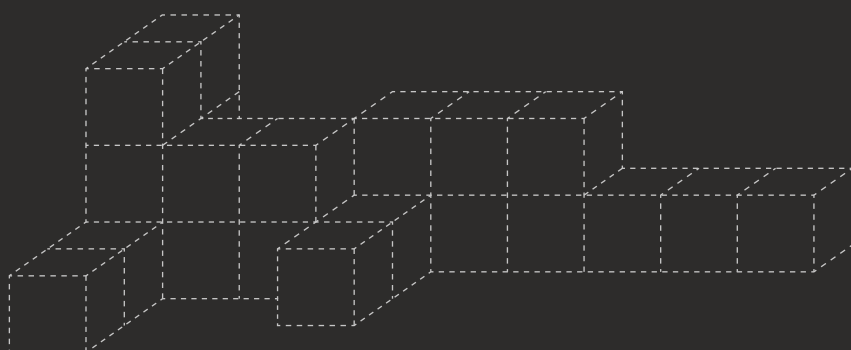
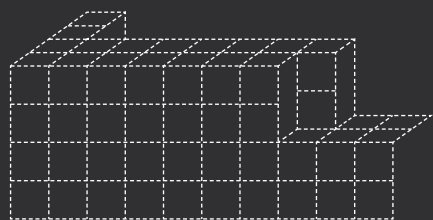


www.apida.hk



Contents



2

/ About HKIDA

3

/ HKIDA Chairman's Message

4

/ About APIDA

5

/ APIDA Chairman's Message

6

/ Awards Categories

7

/ Awards Presentation Rundown

8

/ Judging Panel

13

/ Winning Projects

105

/ Thanks to our Sponsors

113

/ Award List

116

/ Acknowledgement

About HKIDA

HONG KONG INTERIOR DESIGN ASSOCIATION (HKIDA)

is a non-governmental and non-profit organisation founded in 1991. Throughout the years, our members have grown to include a vibrant community of interior designers, contractors, suppliers, students and other professional practitioners in the field of interior architecture.

HKIDA is devoted to serving the needs of our members, industry partners and the general public. One of our major undertakings has been fostering professionalism and design excellence. This includes a comprehensive development of the elaborate codes of conduct, innovation on both creative and technical fronts, as well as the celebration of craftsmanship. HKIDA actively engages in research and education, initiates regional competitions and organises activities which invite participation on a broader social level.

Our success relies on ongoing industry support and recognition. HKIDA works closely with various associations, academics and professionals from commercial and public sectors to further realise our goals and commitments to outstanding interior designs and designers - and for the benefit of all.

HKIDA has seven categories of membership:

- Full Member
- Graduate Member
- Student Member
- Fellow Member
- Corporate Member
- Institutional Member
- Non-local Member

Aims of HKIDA

- 1/ Gathering Point:** HKIDA brings together design and project talents to benefit both businesses and consumers.
- 2/ Education Facilitator:** Through on-going training and education programmes, we develop knowledge of excellence in design, construction and overall project quality.
- 3/ Industry Hub:** We continue to develop and improve professional standards of designers, contractors and suppliers with an updated code of conduct, while keeping up with the standards of creativity, workmanship and technical innovation.
- 4/ Standard Torchbearer:** Throughout the design and construction of the interior environment, HKIDA seeks to promote awareness of public health and safety and the implementation of new technical knowledge and materials.
- 5/ Professional Recognition:** Our standards of professionalism, codes of ethics and business practices are welcomed by members of the industry and their clients alike as satisfied customers.
- 6/ Information Network:** We always channel and archive useful information on our community with our members through exhibitions, seminars and other supporting activities.
- 7/ Exchange Platform:** We facilitate the flow of ideas and information amongst designers, contractors, suppliers and the public both in Hong Kong and internationally, while catering to their different needs.
- 8/ Green Innovator:** We are devoted to Research & Development projects relating to the use of environmentally-friendly products and the promotion of these products.
- 9/ Collaboration Advocate:** By furthering our affiliation worldwide with international organisations, we hope to inspire sustainable collaborations and mutual benefits.
- 10/ Quality Reassurance:** We strive to help our members gain recognition from the governing authorities and the public at large while enlightening the public as to the importance of employing qualified professionals.

HKIDA Chairman's Message



Louisa Young
Chairman
Hong Kong Interior Design Association

Since the establishment of 1992, Asia Pacific Interior Design Award (APIDA) aims to promote professional standards and ethics among interior design. Each year, we come together to recognize and promote the remarkable creativity, innovation, and talent that have shaped the field of interior design.

APIDA not only emphasizes the significance of acknowledging excellence and celebrating the accomplishments of those who inspire us to be our best selves, but it also reflects on the strength of community and the importance of supporting and encouraging one another in our endeavors.

In celebrating the talented awardees, let us also acknowledge the importance of collaboration and inspiration within our community. Together, we can elevate our profession and consistently push the boundaries of creativity.

Our industry's strength lies in its dynamism and its willingness to engage in cross-border dialogues. Just as HKIDA has previously fostered connections through dual-city exhibitions and international forums, the work we celebrate tonight contributes to a vibrant global conversation about the future of design. It is through this exchange of ideas and cultures that we continue to grow and inspire one another. Furthermore, we believe that design is not just an art form but a crucial force for economic development and brand excellence. The award-winning projects here tonight demonstrate how strategic design thinking can create profound market value and elevate brands on the world stage.

Once again, I would like to express our sincere gratitude to all the participating designers, judges and organizing committee for your continued support, making the 33rd APIDA a great success.

33rd Asia Pacific Interior Design Awards 2025

APIDA is organised by Hong Kong Interior Design Association (HKIDA) since 1992. It is the 33rd year of APIDA to promote professional standards and ethics among interior design and also give high recognition to outstanding interior design projects and designers.

APIDA Aims:

- to promote public awareness of interior design as an important aspect of everyday life;
- to acknowledge/ give industry recognition to deserving projects and designers;
- to encourage and promote professional standards and ethics among interior design practices operating in the region.

APIDA's Judging Criteria:

- Design Award Criteria
 - Originality and Innovation
 - Functionality
 - Space Planning
 - Aesthetics
- Best Brand Award Criteria
 - Originality and Innovation
 - Functionality
 - Sustainability
 - Aesthetics

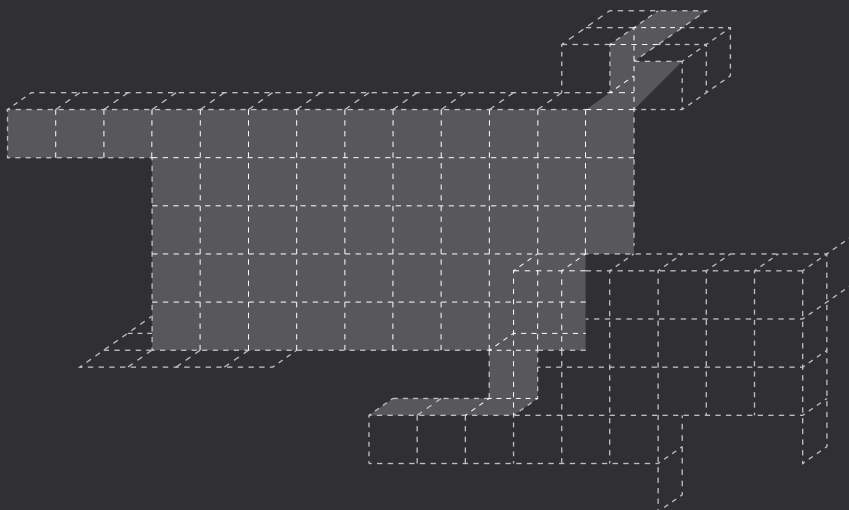
Awards Categories:

- Design Categories
 - Gold, Silver, Bronze Awards, Distinction and Excellence (except Emerging Design Firm category)
 - Judge's Choice
- Best Brand Award



**33rd ASIA PACIFIC
INTERIOR DESIGN
AWARDS 2025**

第三十三屆亞太區室內設計大獎
二零二五年



APIDA Chairman's Message



Karr YIP

Chairman of Organizing Committee
APIDA 2025

APIDA has been held annually since 1992, and proposes to recognize and honor those who have excelled in various design categories, such as living spaces, dining areas, hotel environments, and retail spaces. Each of our awardees has shown remarkable skill, creativity, and dedication, making significant contributions to their profession and to society as a whole.

This year's entries showcased numerous exceptional works from designers across the Asia Pacific region, including Hong Kong, China, Taiwan, Japan, Singapore, Malaysia, and India. Each project demonstrates a remarkable balance of function, aesthetics, and space, reflecting the creativity and passion that propel our industry forward. The diversity of designs presented today is a testament to the talent within our community and the constantly evolving landscape of interior design.

Thank you to all the participating designers for their hard work and dedication. Their projects showcase the brilliance and innovation of designers across the region, and their commitment to excellence and collaboration truly embodies the spirit of our community.

Awards Categories



(01) Food Space

Cafes, bars, lounges, restaurants, canteens, food courts, etc.



(02) Installation & Exhibition Space

Gallery, museum, trade exhibitions, sales offices provided by realty developers, art installations, public park installation, etc.



(03) Leisure & Entertainment Space

Spas, swimming pools, casinos, clubs, cinemas/theatres, health/fitness centres, gyms, beauty centres, salon, game centres, theme park, etc.



(04) Institutional Space

Community centres, schools, kids playgroups, education/learning centres, libraries, hospitals, clinics, airports, public transport stations, government space, etc.



(05) Shopping Space

Shopping malls.



(06) Retail Space

Shops, retail outlets, showrooms, department stores, food markets, kiosks, etc.



(07) Hotel Space

Commercial hotels, budget hotels, city hotels, resort, service apartments, etc.



(08) Sample Space

Show flat provided by realty developers to create an environment on actual building site or offsite prototype to promote the sales of the property



(09) Living Space

Apartments, private houses, etc. (800 sq. ft. or above)



(10) Small Living Space

Apartments, private houses, housing developments, etc. (less than 800 sq. ft.)



(11) Work Space

Offices, studios, warehouses, factories, co-working space, etc.



(12) Student Design

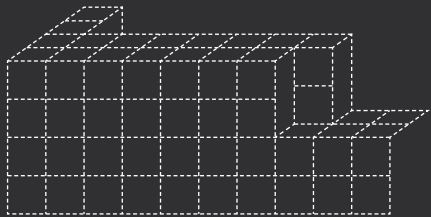
Design project submitted by interior design / interior architecture student



(13) Emerging Design Firm

Emerging Design Firm shall be corporations or firms holding an interior design / interior architecture practice in Hong Kong less than or equal to 5 years.

Awards Presentation Rundown



/ Date

16 December 2025 (Tuesday)

/ Venue

**Hall N101,
Hong Kong Convention and
Exhibition Centre, Hong Kong**

/ 18:00

Registration

/ 18:30

Cocktail Reception

/ 19:30

Event Begins

/ 19:35

Welcome Speech by HKIDA

/ 19:40

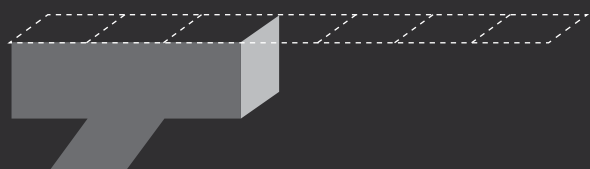
Acknowledgment of Judges

/ 19:45

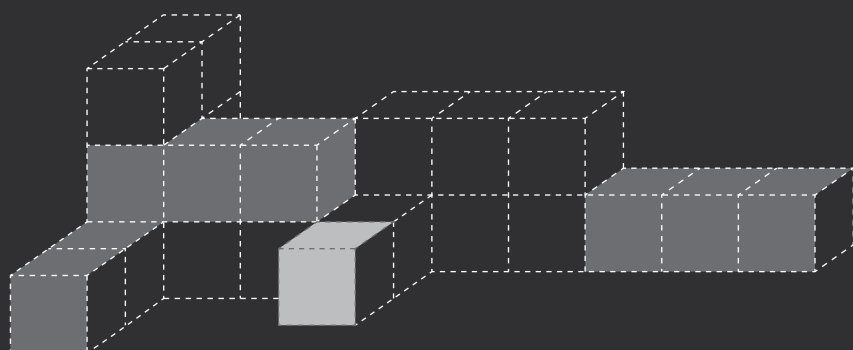
Awards Presentation

/ 22:00

**Closing Remarks and
Event Ends**



APIDA 2025
Judging Panel



Adjudicators



JOHNNY FU

Immediate Past President,
The American Institute of Architects Hong Kong Chapter

Johnny brings a well-rounded perspective to his work, having gained experience in client, operator and consultant roles. This expertise equipped him with a deep understanding of customer-centric design and the ability to balance diverse stakeholder priorities. His portfolio focused on hospitality projects, demonstrating his passion for elevating guest experiences through design.

His works specializing in feasibility studies, guest journey mapping, and master planning, Johnny has worked extensively on urban and resort hotel projects across China, Japan, Southeast Asia, the United States, and the Middle East. His ability to integrate cultural nuances into his designs ensures that each project is not only functional but also deeply connected to its local context, enhancing the guest experience.

Johnny holds a Bachelor of Architecture degree from the Illinois Institute of Technology and is licensed in the State of Illinois. He served as the 2024 President of The American Institute of Architects Hong Kong Chapter.



SIMON HAMILTON

Associate Lecturer and Super Practice Leader, The Royal College of Art

Simon Hamilton is a London-based Educator, Interior Designer, and Moderator with over 30 years of experience in the design industry. He is an Associate Lecturer and The Super Practice Leader for the MA Interior Design Programme at the Royal College of Art, Kensington. As Design Director at YesColours Studio, Simon leads creative direction with a focus on colour, well-being, and inclusivity. His extensive design career spans residential and commercial projects across the UK and Europe, including workplace, retail, healthcare, and hospitality environments. A passionate advocate for diversity and inclusion, Simon actively supports United In Design's mission to mentor and uplift underrepresented talent. As a Patron of the Design Museum, London, he is a sought-after host and moderator at leading design events such as Decorex, DNA Paris Design Awards, London Design Week, and Clerkenwell Design Week, fostering conversations that shape the future of the industry.



IRIS HOI

Director, Urbis Limited

Iris Hoi is a Registered Landscape Architect in Hong Kong and a Fellow of the Hong Kong Institute of Landscape Architects (HKILA). She has over 30 years of consultancy experience in Canada, Hong Kong, China, and surrounding regions. She is a Director at URBIS Limited and has been with the company since 1992. She was the President of the HKILA from 2018 to 2022 and has been actively involved in the Institute since 1991, chairing a variety of committees including education, practice, public affairs, functions and events, professional practice examination, and accreditation review. Iris served as a member of the Land Supply Task Force for the Hong Kong SAR Government, Board of Education and Research of the Professional Green Building Council, Hong Kong Trade Development Council, the Harbourfront Commission, and a number of other organisations. Iris is passionate about building quality landscape spaces for people's enjoyment. A number of her projects have won awards.

Iris is also a member of the Hong Kong Institute of Urban Design.

Iris' range of skills include landscape architecture and landscape master planning. She has extensive experience in award-winning large-scale parks and public spaces, commercial, residential, hotel, transport corridors, institutional and infrastructure-related landscape developments. Her involvement ranges from working in multi-disciplinary consultancy teams to producing landscape master plan studies, feasibility/assessment reports, detail design, and construction documents, to contract administration and tender assessment, to site supervision of landscape works implementation.



PROF. CHARLES O. JOB

Founder, Charles O. Job, Design & Architecture

Charles was born in Lagos Nigeria. He achieved his diploma in architecture, and a master's degree in urban design at the Oxford Brookes University, followed by work experience in various architectural practises in London, Paris and Zürich.

Charles was junior faculty member at the renowned Swiss Federal Polytechnic (ETH) in Zürich for many years, and was appointed professor of architectural design theory at the Berne University of Applied Sciences in 2008, where he continues to teach part time.

Working in the fields of architecture, interior design, product, furniture and lighting design Charles's studio considers architecture in its variety of scales. A constant quest for simple innovation is the common thread through its wide repertoire of projects.

Charles has served in many international design juries such as:

- IF design Award. Germany.
- Design Turkey. Turkey
- D&AD Awards. London
- World Architecture Festival. Porto
- John Ruskin Prize. UK
- Prix Lignum. Switzerland

Charles has taken part in and won prizes in more than 50 international design competitions.

His plywood armchair SKETCH was recently acquired for the permanent collection of Vitra Design Museum and Denver Art Museum.



ALISTAIR LEUNG

Independent Consultant

Alistair Leung is a professional interior architect/designer with 40 over years of experiences on hospitality, branding, corporate and residential design. He now serves as independent consultant to high end private projects. He had held key management positions in several major international design corporations and institutes in USA, Singapore and Hong Kong, and implemented projects in USA, Europe and Asia. Prior to his private consultancy, Mr. Leung was a director of Ronald Lu & Partners HK heading his interior design strength; where he led/directed many successful projects that won 140+ international design awards in a period of 14 years. He was also awarded as one of the ten most influential designers in a major China design award in 2017 and 2018. Mr. Leung earned a degree in Interior Architecture at the CCA, USA and MBA at the University of Chicago.



ANDREA PONTI

Director and Chief Designer, Ponti Design Studio Ltd.

Andrea Ponti is a Hong Kong-based designer specializing in product and industrial design.

His work blends the elegance of Italian design with the minimalism of Japanese aesthetics.

A graduate of Politecnico of Milan, Andrea spent seven years in Japan, mastering traditional Japanese materials and techniques.

In 2012, he founded Ponti Design Studio in Hong Kong, focusing on innovation and sustainability.

Andrea collaborates with global brands including Casetify, Fender, Haier, KEF, Kodak, Monos, NetEase, Oppo, Panasonic, The Peninsula Hotels, Philips, and Samsonite.

His work has earned prestigious awards, including the Red Dot, iF Design, and Good Design Awards.

Inspired by Hong Kong's dynamic fusion of East and West, his designs reflect the city's spirit, balancing art and technology while pushing the boundaries of design and innovation.



CHUNG-YI YANG

Partner, ACPV ARCHITECTS

Chung-Yi Yang, born in Taiwan, is the Partner at ACPV ARCHITECTS, a Milan based architecture firm and an international collective with the aim of nurturing shared well-being through unique, high-profile architectural solutions worldwide. She graduated at Istituto Europeo Di Design in Milan in 1998. After years of working experience in interior design field in Taipei and Milan, joined ACPV ARCHITECTS in 2007. She has delivered numerous interior design projects from hospitality to residential and mixed-use developments in the greatest world cities. She sees the study and definition of interior spaces as a guide for improving the quality and use of every environment that surrounds us. She has been invited to be a member of jury of Taiwan Interior design award (TID) and IF Design.



REBECCA YAZBEK

Co-founder, Creative Director, and Managing Director,
edition Hospitality

Rebecca Yazbek is the Co-founder, Creative Director, and Managing Director of edition Hospitality, a Sydney - and Melbourne - based hospitality group behind acclaimed venues including NOMAD Sydney, NOMAD Melbourne, and Reine & La Rue.

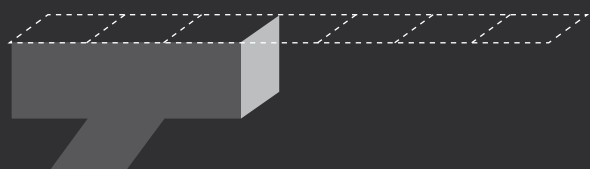
Rebecca launched the company in 2013 with the opening of NOMAD Sydney, driven by a vision to bring a cellar door-style dining experience to the heart of the city. Since then, NOMAD has become a celebrated institution, earning numerous accolades and establishing a reputation for its bold, produce-driven menus and impeccable service.

In 2023, the group expanded with the opening of Beau and Reine & La Rue, the latter quickly earning recognition as Melbourne's Best New Restaurant. Both venues have been widely praised for their striking, design-led interiors—a reflection of Yazbek's background in architecture and her refined creative vision.

Rebecca holds a degree in Interior Architecture from the University of New South Wales and commenced a PhD exploring the intersection of technology and the built environment. It was during this time—while working in the design industry—that she discovered a passion for hospitality, viewing restaurants as intimate spaces where design, human interaction, and sensory experience converge.

As the group's CEO, Rebecca is most proud of the diverse and talented team she has built. She is committed to fostering an inclusive and collaborative culture, nurturing emerging talent, and creating restaurants that exemplify craftsmanship, quality, and a deep respect for the broader ecosystem that supports the industry.

When she's not working or travelling between cities, Rebecca cherishes time with her three young children and husband —ideally by the ocean, where swimming is a shared family joy.



APIDA 2025 Winning Projects



Judge's Choice

Judge's Choice /by Johnny Fu

CCD APAC HEADQUARTERS

Company Name:
CCD/Cheng Chung Design (HK) Limited

Project Designer(s):
CCD/Cheng Chung Design (HK) Limited

Project Location:
Singapore

Site Area:
630 sq. ft.

Judge's Comment:

This project stands out for its thoughtful choreography of space and spirit. Distinct zones support focus, agility, and collaboration. Interior planting breathes life into the workplace, softening edges while enhancing wellbeing and biophilic connection. A centrally located pantry anchors the plan, inviting spontaneous interaction and cross-team exchange, turning everyday rituals into moments of community. The palette, textures, and lighting cultivate genuine warmth in this workspace, balancing performance with comfort, proving that productivity thrives where people feel at home.



Judge's Choice /by Simon Hamilton

MUDDY STREAM

Institution Name:
Hong Kong Design Institute

Project Designer(s):
Kwong Kai Nam Ivan

Project Location:
Hong Kong (SAR)

Site Area:
21,528 sq. ft.

Judge's Comment:

It is well considered, beautifully illustrated and sets out to address an increasing issue of urbanization. I like that it is open to everyone.





Judge's Choice

Judge's Choice /by Iris Hoi

SNOW PEAK POP-UP STORE AT CHENGDU MIXC

Company Name:

Matrix Design

Project Designer(s):

**Wang Guan, Liu Jianhui,
Wang Zhaobao**

Project Location:

China

Site Area:

1,399 sq. ft.

Judge's Comment:

Iconic outdoor experience – clean, modern, memorable. Interior is an extension of the outdoors, also very clean. Simplistic but very legible. Good use of lines at the ceiling, materials & tonal contrast of the counter.



Judge's Choice /by Prof. Charles O. Job

THE YARD | DALIAN CULTURAL CENTER

Company Name:

Neri&Hu Design and Research Office

Project Designer(s):

**Lyndon Neri, Rossana Hu, Zhao Lei,
Ivy Feng, Wenbo Da, Christine Chang,
Siyu Chen, Susana Sanglas, Feiteng Feng,
Haiou Xin, Ziyang Lin, Lyuqitiao Wang,
Greg Wu**

Project Location:

China

Site Area:

105,486 sq. ft.

Judge's Comment:

The Yard is a very sensitive proposal for a community center. A contemporary approach, it re-uses existing infrastructure and re-purposes spaces to accommodate a variety of inclusive, interrelated communal functions.

The project craftily fuses the new with the existing without erasing the old. It deploys the patina and traces of the old to forge a new identity.





Judge's Choice

Judge's Choice /by Alistair Leung

THE LIGHT OF BAMBOO KNOWLEDGE

Company Name:
zhixu interior

Project Designer(s):
陳君哲、蔡欣芸

Project Location:
Taiwan

Site Area:
430 sq. ft.

Judge's Comment:

A good and winning interior design project deemed a well-proportioned spatial quality in addition to its visual appeal and context of comfort. It is usually easier to be achievable in project with floor area and investment abounding. My choice of the good project this year is in fact a small size apartment that have displayed the above qualities very successfully. Inside this small apartment, all functional areas are properly located and well defined yet are physically and visually connected with others in a dynamic way; by sliding panels, by cut out openings at walls, by floor treatments, by ceiling and walls configurations and by colors and materials allocation. Walls, cabinetry and furniture are simple geometry and with meaningful measurements; a very well play of the positive and negative spatial volumes. The project contains an energy to capture your eyesight, and sincere invitation to resonate its living experience offered.



Judge's Choice /by Andrea Ponti

TOKERU

Company Name:
no.10, NOMURA Co., Ltd.

Project Designer(s):
**Keita Aono, Yosuke Ando,
Jun Watanabe, Miyuu Okada**

Project Location:
Japan

Site Area:
2,368 sq. ft.

Judge's Comment:

Despite the limited space, the interior showcases a clear concept, a distinct visual language, and cohesive execution. The use of white tones, drapes, and transparencies creates a refreshing yet relaxing atmosphere.





Judge's Choice

Judge's Choice /by Chung-Yi Yang

MANDARIN ORIENTAL QIANMEN BEIJING

Company Name:

CCD/

Cheng Chung Design (HK) Limited

Project Designer(s):

CCD/Cheng Chung Design

Project Location:

China

Site Area:

13,693 sq. ft

Judge's Comment:

A well done sophisticated project. Good coherence between architecture and interior design. Attention on the proportion, culture touch, selection of materials & finishes. The best project among all the categories is deserved.



Judge's Choice /by Rebecca Yazbek

MINNAN TEA SALON · CHENG YI EN

Company Name:

Scope Design

Project Designer(s):

Weng De

Project Location:

China

Site Area:

3,660 sq. ft.

Judge's Comment:

Using old and new to create an utterly compelling and inviting space. Materiality & scale as well as lighting imbue the space with elegance, refinement as well as nature and calm.





Food Space

Gold Award

MINNAN TEA SALON · CHENG YI EN

Company Name:

Scope Design

Project Designer[s]:

Weng De

Project Location:

China

Site Area:

3,660 sq. ft.

Tucked away in a historic alley of Zhangzhou, this century-old Minnan dwelling is carefully transformed into a serene tea salon that honors the soul of the original architecture. Guided by the philosophy of “repair the old as it was, integrate old and new,” 70% of the original timber structure—beams, staircase, and courtyard stonework—is preserved. Traditional mortise-and-tenon techniques and handcrafted window grilles maintain authenticity, while carefully curated new elements—aged fir tea tables, brass lighting, rammed earth walls, and native flora—bring new life. The spatial experience unfolds through a narrow, light-filtered entry, a 5.8m-high courtyard that breathes with sunlight and rain, and upper floors that host intimate tea scenes. Architecture becomes a vessel, tea a medium, and daily life a ritual of calm and poetry. It is a quiet dialogue between tradition and contemporary living, rooted in the rhythms of southern Fujian.





Food Space

Silver Award

LATE NIGHT KITCHEN

Company Name:
JG PHOENIX

Project Designer[s]:
Ye Hui, Chen Jian, Chen Xuexian,
Cai Jikun

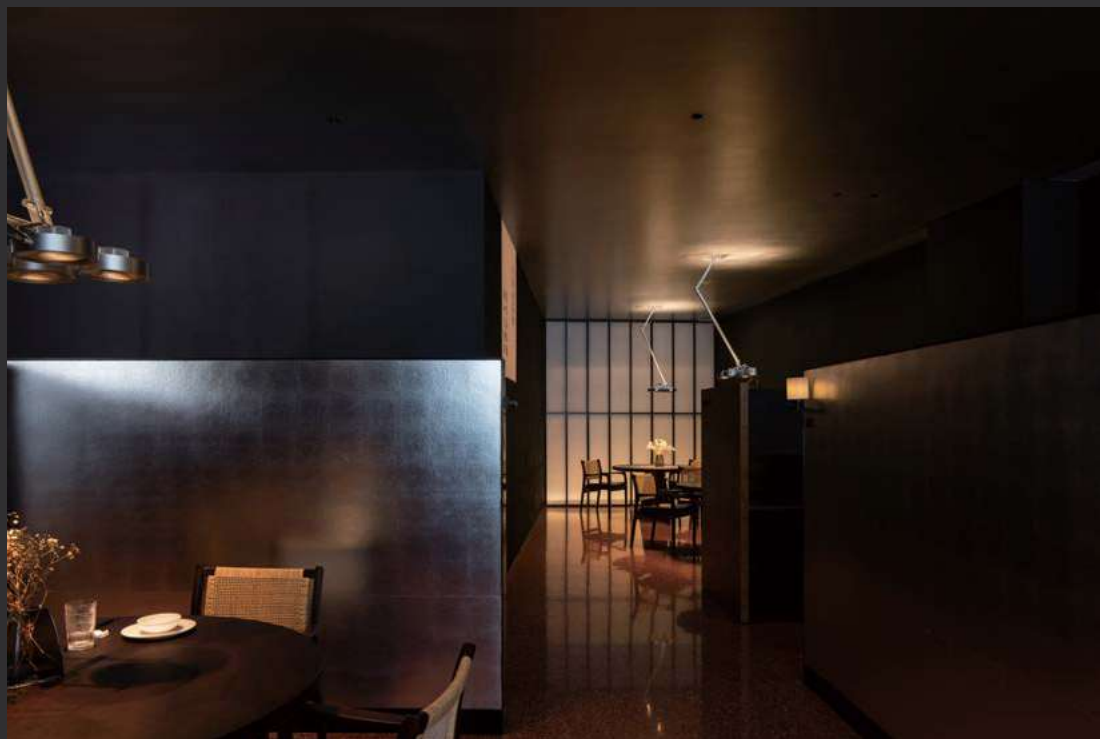
Project Location:
China

Site Area:
5,920 sq. ft.



The black walls and domed ceiling create a serene overture; the red terrazzo floor glows like dawn's first light, igniting the senses.

In the reception area, blocks of acrylic light serve as brushes of illumination, softening the interplay of black and red tones and adding a touch of transparency and warmth. The dining area mostly adopts a semi-enclosed layout, with screens gently wrapping around, offering a balance of openness and privacy. The screens, draped in silver, soft light from wall sconces casts shimmering reflections, with its high reflectivity, brightens the black-and-red sanctuary, where light and shadow dance harmoniously, dispelling any heaviness. Within the private rooms, deep black walls are adorned with warm lighting elements, elegantly inscribing the names of dishes to enhance the atmosphere.





Food Space

Bronze Award

JADE APARTMENTS BOFF COFFEE

Company Name:

Matrix Design

Project Designer[s]:

**Wang Guan, Liu Jianhui,
Wang Zhaobao**

Project Location:

China

Site Area:

3,014 sq. ft.



BOFF Coffee, located at the corner of Runyao Mansion in Shenzhen's Guangming District, is a multifunctional hybrid space that transforms four original storefronts into a combined real estate exhibition hall and permanent community cafe. The design reimagines traditional sales venues with an aluminium facade inspired by architectural eaves, openable glass walls for seamless indoor-outdoor flow, and landscape-integrated interiors that promote community engagement. Despite challenges in timeline, budget, and customization, the project was successfully completed through integrated project management, cost-effective material strategies, and detailed coordination with suppliers. The space delivers a warm, flexible environment that adapts to both marketing and social functions, setting a new benchmark for real estate-commercial integration. It embodies a non-invasive, sustainable approach that supports long-term neighborhood vitality while meeting immediate project needs.





Food Space

Distinction

THE DARK LIGHT

Company Name:
HBM

Project Designer(s):
王強、劉華、韋凱鈞、
聶東木、聶祖蘭、VV

Project Location:
China

Site Area:
12,917 sq. ft.



Located on the edge of the city, this all-black restaurant is conceived as a sanctuary of silence and light. Crafted from volcanic stone and oak, the space explores the dialogue between mass and nature. Staggered square windows invite light to dance across walls and tables. A sculptural black wooden staircase connects the three

floors, while private dining rooms open to quiet courtyards. Custom-designed black chairs blend modern Western spirit with Eastern gravity—capturing emotions, memories, and solitude in time.

Distinction

XIAO · TEA HOUSE

Company Name:
**Guo Xin Space Design Studio
(Xi'an) Co., Ltd.**

Project Designer(s):
郭華

Project Location:
China

Site Area:
4,951 sq. ft.



The inspiration of the gold leaf comes from the ginkgo tree under the ancient Guanyin Zen Temple at the foot of Zhongnan Mountain, and the light of a thousand years has been translated into 60,000 gold leaves in the space. When the sun shines through, the gold leaves

project flowing and changing light shadow. In our own way, we imply the vitality of the thousand-year-old ginkgo tree, and have a dialogue with the "tree of life" outside window.



Food Space

Excellence

ROGANIC HONG KONG

Company Name:
HK Timberbank / Atelier E

Project Designer[s]:
Ricci Wong, Enoch Hui

Project Location:
Hong Kong (SAR)

Site Area:
3,500 sq. ft.

Roganic's philosophy pushes the boundaries of farm-to-table dining and sustainable gastronomy. The client wished to extend Chef Simon Rogan's zero waste dining ethos from the menu to its new interiors in Lee Garden. An immersive dining experience for its premium diners with sustainable local materials. The material deployed in the interiors should be the manifesto of its own sustainable story, like each of the dining menu the Chef has created from the locally sourced farm. Locally felled tree timber from typhoon and development was salvaged and



processed in Timberbank—a Hong Kong local eco-preneur. The team creates the forest dining room which covers the ceiling, columns, walls and tables. Each dining table characterizes with its own species

and carried its story of the original tree happened to be felled. The floor was made from reclaimed marble. And the bar was coated in a paint made from oyster shells and stone minerals.

Excellence

SIZZLING JINZHOU AUTHENTIC BBQ SKEWERS

Company Name:
瀋陽同聲和空間裝飾工程有限公司

Project Designer[s]:
劉柏君、宋徑霖、李科軍、丁了了

Project Location:
China

Site Area:
3,229 sq. ft.

Sizzling Jinzhou Authentic BBQ Skewers, nestled in Shenyang, glows like luminous amber as the city lights awaken. Here, an intense longing for warmth and the hearth's embrace is born, where passion for life is infused into the aroma of every sizzling skewer.

The designer, deeply attuned to the city's spirit, delves into Northeast China's natural textures and cultural soul. With "Shanye Feng" (rustic wilderness essence) as its backbone and the Northeastern ethos as its core, the space imbues the very name "Northeast" with a tangible cultural weight, savored through the heat of charcoal fire.

Authenticity is never a polished act—it's the raw, earthy truth.





Food Space

Excellence

SONG SZECHUAN CUISINE

Company Name:
**Republic Metropolis Architecture
(RMA)**

Project Designer(s):
Ray Wong

Project Location:
China

Site Area:
16,146 sq. ft.



SONG Szechuan Cuisine, the Chinese mainland's first Michelin-starred Sichuan restaurant, extends its Guangzhou outlet's essence. Its new Chengdu Taikoo Li branch, with "daily life as poetry" as design core, blends old objects and modern space, focusing on "relaxation".

Its three floors have unique layouts, echoing history and culinary vibes. Michelin chefs create innovative Sichuan dishes, served in custom tableware that resonates with the space's old items, letting diners feel Sichuan flavors and the city's warmth.

Excellence

ESPRIT C. KEI GINZA

Company Name:
A.N.D., NOMURA Co., Ltd.

Project Designer(s):
**Design: HIRONORI TAKEUCHI
Direction: RYU KOSAKA**

Project Location:
Japan

Site Area:
2,737 sq. ft.



This restaurant is a collaboration between three-Michelin-star chef Kei Kobayashi and historic Japanese confectioner Toraya. Located on the 11th floor of a building in Tokyo's Ginza district, it features an open charcoal kitchen, a main dining area, and a private room. The concept is "tradition and innovation." A distinctive ceiling design transitions from a traditional flat ichimatsu pattern at the entrance to a dynamic three-dimensional structure. An installation of wooden rods and glowing acrylic bars forms a cave-like shape,

symbolizing the fusion of tradition and innovation. The ceiling uses hinoki wood in varied lengths to enhance efficiency and minimize waste. In the private room, architectural ductwork is exposed and enclosed in glass to maximize ceiling height within a limited space. This thoughtful integration of materials and design reflects a balance between Japanese craftsmanship and modern creativity, offering a unique dining experience that celebrates both heritage and modern aesthetics.



Food Space

Excellence

CAD COFFEE

Company Name:
Dayi Design

Project Designer[s]:
**Zhou Yi, Chang Jingliang,
Chang Haoyi, Yang Shizhe**

Project Location:
China

Site Area:
10,764 sq. ft.



This project utilizes the environmental advantages of a city park and the unique shape of a former cement factory to create a distinctive and unfamiliar experience. The design maintains the openness of the park while preserving the factory's historical and architectural character. The interior features an open layout, with large glass windows and French floor-to-ceiling windows connecting the space to the outdoor landscape, offering a soothing, multi-functional environment for business, gatherings, reading, and leisure. Natural

light is used to enhance the atmosphere, while materials like textured wood and coarse textiles balance modern minimalism with organic elements. The outdoor area is a European-style garden, blurring the boundary with the park and offering a relaxing, social atmosphere. The design focuses on creating a practical and accessible escape for consumers, catering to diverse needs while offering a break from the daily routine.



Installation & Exhibition Space

Gold Award

TOYOTA CITY MUSEUM

Company Name:
TANSEISHA Co., Ltd.

Project Designer[s]:
**TANSEISHA Co., Ltd.,
Shigeru Ban Architects,
Kijuro Yahagi Inc.**

Project Location:
Japan

Site Area:
431,633 sq. ft.



A new museum based on the concept of “a museum of continued creation by everyone” has been established in Toyota City, Japan, known as the birthplace of Toyota Motor Corporation.

A 7.8-meter-tall collective exhibition glass cube displays materials from various genres, including nature, history, archeology, folklore and industry, that tell the story of Toyota: a place where abundant nature coexists with human activity. This 90m deep glass-enclosed space, with wooden pillars and a roof, is a lively open space called the “En-nichi Area” where residents and businesses freely hold exhibitions and workshops. A system has been created that makes it easy for anyone to participate and put on an exhibit.

Through such resident-driven and sustainability-focused initiatives and activities, the museum serves as a focal point of the local identity for Toyota residents, as well as a place where outside visitors can experience Toyota’s charm and distinctiveness.





Installation & Exhibition Space

Silver Award

NULL²

Company Name:
OCHIAI Yoichi,
NOMURA Co., Ltd.,
WOW inc., Asratec Corp.,
NOIZ Co., Ltd.

Project Designer(s):
OCHIAI Yoichi,
NOMURA Co., Ltd.,
WOW inc., Asratec Corp.,
NOIZ Co., Ltd.

Project Location:
Japan

Site Area:
7,050 sq. ft.



null² is a sculptural pavilion embodying Digital Nature, formed from voxel clusters of 2m, 4m, and 8m cubes. These are wrapped in a newly developed 98% reflective mirrored membrane that responds to wind with wave-like motion, distorting the environment in fluid rhythms.

In an era when the value of physical attendance is questioned, null² presents a compelling reason to visit — a space that bridges physical and digital realms. Subwoofers and robotic arms embedded in several cubes generate low-frequency vibrations and kinetic shifts, transforming the membrane's surface and its surroundings in real time.

Inside, endless mirrored reflections, synchronized robotic motion, and digital displays immerse visitors, making them part of a dynamic environment. The pavilion behaves like a living organism — breathing, reacting, and evolving with its context. It redefines architecture as an interactive entity where machine, material, and human presence are deeply intertwined.





Installation & Exhibition Space

Bronze Award

GAOSU REAL ESTATE GROUP VISION (EXHIBITION CENTER)

Company Name:
Shenzhen Das Design Co., Ltd.

Project Designer[s]:
DAS DESIGN

Project Location:
China

Site Area:
41,764 sq. ft.



For millennia, Luzhou has been embraced by lush greenery and overlapping mountain ranges; its serene pavilions and corridors stand as silent guardians of a profound cultural heritage.

Nestled in Hefei, Anhui, the Gaosu · Yipin Clubhouse project sees DAS Design drawing inspiration from Luzhou's indigenous cultural DNA. Breaking free from the constraints of traditional sales space design, the project employs modern Oriental aesthetics as its creative brushstroke, weaving the "rhythms of the four seasons" into its core narrative. It showcases how nature and culture shape diverse lifestyles, offering a tribute to the elite (social strata) and redefining the poetic expression of elegant luxury living.



Installation & Exhibition Space

Distinction

WUHAN HANYANG MANSION BY POWERCHINA

Company Name:

Matrix Design

Project Designer[s]:

**Wang Guan, Liu Jianhui,
Wang Zhaobao**

Project Location:

China

Site Area:

10,764 sq. ft.



Located in the cultural and artistic hub of Hanyang District, Wuhan, the project emphasizes urban renewal by integrating art into city development. The interior design revolves around the theme of "light," exploring its role in culture, art, and urban evolution. Through multimedia, the project showcases light's diversity and creates a unique artistic experience, blending technological innovation with traditional forms. Key features include interactive art installations,

the use of reflective materials, and art works capturing light at different times of day. The design also focuses on sustainability, incorporating eco-friendly materials, natural light, and aroma systems to promote environmental responsibility. The project creates a space that merges art, technology, and culture, enhancing the urban landscape and engaging visitors in a dynamic, emotionally resonant experience.

Distinction

INTERIOR DESIGN OF HISENSE JUNHE SALES OFFICE

Company Name:

Shandong University of Art&Design

Project Designer[s]:

Bin Luan

Project Location:

China

Site Area:

4,306 sq. ft.



Junhe. Jun, Shangde also; And, correspondingly.

Those who are called gentlemen exude the temperament of "Confucianism" and "Taoism" from their bones. Confucianism enters the world, Taoism emerges from it, the group does not compete, the

reserved does not party, and the heart is at peace between choices. A gentleman is like jade, gentle and radiant. Therefore, the overall design of the project is characterized by concise lines, pure colors, and unadorned simplicity, endowing the space with a warm and elegant sense of humility and gentlemanly sentiment.



Installation & Exhibition Space

Distinction

PANASONIC GROUP PAVILION “THE LAND OF NOMO”

Company Name:
NOMURA Co., Ltd.

Project Designer(s):
Client: Panasonic Holdings Corporation,
Studio: NOMURA Co., Ltd.,
Produce: DENTSU INC., DENTSU LIVE INC.

Project Location:
Japan

Site Area:
8,127 sq. ft.



The Land of NOMO is an experiential pavilion at Expo 2025 Osaka designed to unlock children's potential through emotional storytelling and multisensory exploration. Its interior transforms natural motifs—forests, ancient trees, and crystals—into a mysterious, picture book-like world that inspires curiosity and imagination.

Refined through extensive prototyping, the spatial layout and interactive features are attuned to how children perceive and move. Each zone encourages discovery through shifting light, ambient sound, mist, and texture. Custom tiles from Tajimi, designed to

evoke the sensation of walking on a forest floor—even with shoes—are also modular and reusable.

Sculptural elements are 3D-printed from biodegradable resin designed to return to the earth within eight months—balancing visual clarity with environmental care.

Through responsive design and emotionally attuned materials, the pavilion becomes more than an exhibit—it becomes a mirror of each child's inner world and a joyful, inclusive vision for architecture's future.

Distinction

FUQING MAOHUA XINGHE SONG PHASE II SALES CENTER

Company Name:
METROPOLITAN DESIGN;
YANG & ASSOCIATES GROUP

Project Designer(s):
METROPOLITAN DESIGN;
YANG & ASSOCIATES GROUP

Project Location:
China

Site Area:
1,790 sq. ft.

Shuttle in the flowing art space, feel the infinite growth of natural space, appreciate the precipitation and extension of beauty life in the poetic space of nature and humanity resonance, and open the good feeling of future life.

There's a universe out there, a natural way of change. The design integrates the nature of life, awakens the perception of all things, feels the package of the four seasons, and evokes people's response. The flowers will be hidden in the sales office, in the way of nature, the life of all things. Every flower is in full bloom, the spring is as numerous as brocade, and the Rong flowers are deep, which will evolve the scenery in the garden into the scenery of the interior space, so that the interior feels the existence of natural design. The space design and natural elements are perfectly integrated to create a relaxed and garden-like atmosphere.





Installation & Exhibition Space

Distinction

SUSTAINABLE MATERIAL EXHIBITION HALL

Company Name:

Matrix Design

Project Designer[s]:

**Wang Guan, Liu Jianhui,
Wang Zhaobao**

Project Location:

China

Site Area:

861 sq. ft.



This sustainable exhibition space utilizes 100% eco-friendly materials, showcasing the possibilities of integrating sustainable practices into conventional design. Featuring modular design to minimize waste and maximize recyclability, the space reimagines materials through creative applications, such as using agricultural waste for wall panels, display platforms, and flooring. Key innovations include mycelium bricks, straw boards, and rice husk wood, which

are not only environmentally friendly but also offer practical solutions in terms of durability, fire-resistance, and energy efficiency. The design emphasizes "material substitution logic," helping designers easily adopt sustainable materials in future projects. By combining aesthetics, functionality, and sustainability, the exhibition creates an interactive space where visitors can engage with the materials, extending the influence of sustainability beyond the exhibition itself.

Distinction

LANSEN HEADQUARTER SHOWROOM

Company Name:

Studio IDM

Project Designer[s]:

**Wang Guan, Liu Jianhui,
Wang Zhaobao**

Project Location:

China

Site Area:

9,688 sq. ft.



The LANSEN Headquarter Showroom redefines traditional exhibition spaces with the innovative "emotional theater" concept, crafting a dynamic experience field centered on spatial aesthetics, brand empowerment, and commercial value. It abandons linear circulation for free-flowing layouts, guiding visitors through striking immersive lighting installations at the entrance. Scenarios like retail markets, material laboratories, and concept stores—anchored by Lansen boards as the narrative thread—blend multi-sensory engagement with technological innovation, enabling deep brand

interaction. Spatial design employs layered lighting, metallic diffusions, and geometric textures to evoke a fusion of art and technology, while the QIT Super Structure System ensures efficient, eco-friendly construction by eliminating traditional base layers. Key highlights include non-linear movement, interactive scenography, and sustainable engineering, all harmonizing brand storytelling with commercial conversion to elevate Lansen's industry leadership and innovative positioning.



Installation & Exhibition Space

Excellence

SHANGHAI DONGPENG KITCHEN-BATHROOM EXPO

Company Name:

Matrix Design

Project Designer[s]:

Wang Guan, Liu Jianhui, Wang Zhaobao

Project Location:

China

Site Area:

7,341 sq. ft.

The exhibition hall, covering nearly 700 square meters, draws inspiration from the concept of an infinite Rubik's Cube, symbolizing flexibility, innovation, and technology. The layout uses Golden Section proportions to merge two distinct areas, guiding visitors through a circular path while maintaining functional and aesthetic unity. The design integrates advanced technology, such as smart toilets and energy-efficient solutions, with interactive elements like rotating panels and immersive water areas. These features highlight the brand's focus on sustainability and human-machine interaction. The atmosphere is enhanced with strong colors, lighting, and sound, creating an engaging, modern experience that attracts diverse audiences and emphasizes both visual and emotional connection with the brand.



Excellence

'MANGROVE', SOLAIRE RESORT NORTH

Company Name:

Habitus Design Pte. Ltd.

Project Designer[s]:

Designed by: Habitus Design Pte. Ltd.,

Manufactured by: Nikolas Weinstein Studios

Project Location:

Philippines

Site Area:

10,707 sq. ft.

'Mangrove', the world's largest tubular glass installation at nearly eight stories tall, is Solaire North's artistic focal point, conceived to encourage visitors into its monumental atrium and upwards through the building. Inspired by native mangrove forests, the sculpture brings the essence of nature into the heart of an urban development. Its colossal, transparent branches and tendrils undulate 27m towards the atrium's skylight and are dynamically transformed by ambient lighting. Always mesmerising, 'Mangrove' can be enjoyed from all angles.

Structurally complex and innovative, 35m wide and incorporating over 11km of interwoven glass tubing, each of its 16,385 tubes has been created by hand. They are held together by thousands of joints, enabling the structure to flex and absorb seismic vibrations - a massive dampening system redefining what glass can do: not just span space but animate it with emotional resonance.





Installation & Exhibition Space

Excellence

UNIVERSITY GALLERY AT POLYU

Company Name:
**Architecture Commons Ltd. x
PolyU Campus Development Office x
Kingsmen HK Ltd.**

Project Designer(s):
**Architecture Commons Ltd. x
PolyU Campus Development Office x
Kingsmen HK Ltd.**

Project Location:
Hong Kong (SAR)

Site Area:
1,800 sq. ft.



Red brick tiles are found all over the PolyU campus. The design of the Gallery front wall honours this identity with a modern twist. The changing views through the holes in the wall allow glimpses of the red bricks behind. The cement blocks in the wall are made of sustainable cement developed by PolyU researchers. They represent PolyU's role

in Hong Kong's industrial history and commitment to future innovation. It takes you through different zones, you will gain a deeper understanding of the history of pursuing excellence and how PolyU forge ahead as an innovative world-class university.

Excellence

POLY TANGYIN

Company Name:
Epic Design Co., Ltd. - Guangzhou

Project Designer(s):
孫樺

Project Location:
China

Site Area:
4,769 sq. ft.



Poly Tangyin uniquely combines the dual functions of a sales center and clubhouse. Nestled in Sanya's culturally rich Dazhao Village, the structure was originally a heritage homestay. The design team adhered to core principles of energy efficiency and sustainability while pursuing the continuation and regeneration of historic architecture.

Through adaptive reuse design, the project skillfully revitalized this historic building, endowing it with new purpose and vitality. The integrated renovation—spanning architecture, landscape,

and interior design—showcases the project's distinctive design philosophy and cultural depth. Here, tradition intertwines with modernity, comfort merges with contemporary aesthetics, creating an exceptional spatial experience that embodies both reverence for historical culture and an unwavering pursuit of innovative development.



Leisure & Entertainment Space

Gold Award

CULTURAL ARENA | NEW BUND 31 PERFORMING ARTS CENTER

Company Name:

Neri&Hu Design and Research Office

Project Designer[s]:

Lyndon Neri, Rossana Hu, Ziyi Cao,
Christine Chang, Fong Win Huang,
Chaofu Yeh, Siyu Chen, Sela Lim,
Alexander Goh, Kate Hwang,
Nicolas Fardet, Kany Liu, Ath Supornchai,
Greg Wu, Becky Zhang, Luna Hong,
Elan Tao, Zhikang Wang, Jingyi Bi,
Guanlin Lee, Kathy Hu, Jinlong Li,
Danyan Jin, Cheri Lee, Shiqi Zhang,
Davis Butner, Vanessa Wu, Elis Huang

Project Location:

China

Site Area:

189,230 sq. ft.

Situated along the bank of the Huangpu River amongst a cluster of shiny new skyscrapers, the New Bund 31 Performing Arts Center houses a grand theater and a black box performance space, well positioned to become an architectural landmark and cultural destination for the community.

Neri&Hu's interior design concept for the project is "the arena," a contemporary interpretation of the classical archetype. Within the 2500-seat grand theater, warm oak envelops the entire performance hall, the repeating arch motif here not only echoes the arena concept, but also helps to fulfill the acoustic requirements of the theatre.





Leisure & Entertainment Space

Silver Award

TEA PAVILION-SEATED

Company Name:

Jiangsu Vocational College of
Agriculture and Forestry

Project Designer(s):

葉宏、陶勇、劉進華、朱發海

Project Location:

China

Site Area:

120 sq. ft.



"Tea Pavilion — Seated" is a mobile, prefabricated architectural space designed for the modern slow-living movement. It reinterprets the traditional tea pavilion by integrating modern spatial design with Taoist Five Elements theory, creating a new paradigm for tea spaces.

Designed for meditation, yoga, and tea gatherings, it carefully considers scale, enclosure, color harmony, and material selection to create a holistic energy field. This space invites visitors to shed emotions and desires, returning to a state of tranquility.





Leisure & Entertainment Space

Bronze Award

JINMAO.TIANLUMANWAN

Company Name:
C&C DESIGN CO., LTD.

Project Designer[s]:
Peng Zheng, Lian Yuanzhao,
Huang Haili, Ma Enle,
Li Huachun, Lin Jingrun,
Li Yonghua, Zhu Guoguang,
Zhan Chenghuang, Zhang Xian,
Zhu Yunfeng, Zhu Wenfeng

Project Location:
China

Site Area:
24,423 sq. ft.



The layout of the entire space revolves around the central rainforest courtyard. The courtyard, as an extension of the building and a buffer between life and nature, has been an important part of human habitation since ancient times.

The interior borrows from the courtyard, and the courtyard feeds the interior space. In the negotiation area, natural wind and light are

introduced into the building, blurring the boundaries between indoor and outdoor spaces and enabling mutual penetration. As Jinmao's first "full" series - a project mainly featuring vacation - the design responds to the core demands of modern urbanites, presenting a flowing living field - light and wind, light, wind, vegetation and human relationships are interwoven and symbiotic inside and outside the building.





Leisure & Entertainment Space

Distinction

CHAMPION CIRCLE AND INNER CIRCLE

Company Name:
J. Candice Interior Architects

Project Designer[s]:
**Candice Chan, Leo Chiu,
Priscilla Lai, Karlwin Huang**

Project Location:
Hong Kong (SAR)

Site Area:
53,820 sq. ft.



Champion Circle and Inner Circle at the Hong Kong Jockey Club racecourse are designed to elevate the horse racing experience, blending luxury with cultural heritage. Spanning 65,000 square feet, this venue utilizes world-class technology, featuring a 10-meter LED TV, bar tables, booth seating, and communal tables, ensuring usability and comfort for all patrons.

Champion Circle boasts a modern aesthetic with vibrant colors and dynamic spaces that encourage social interaction. This design focuses on creativity and human-centric innovation, attracting both local and

international guests. It celebrates racing culture while promoting community engagement and fostering a sense of belonging.

Inner Circle offers an intimate and cozy environment, showcasing local artistry and traditional motifs. This space enhances customer engagement by providing comfort and authenticity, making it a prime destination for tourists seeking genuine experiences. Its design prioritizes sustainability by incorporating locally sourced materials and promoting eco-friendly practices.

Distinction

MARUMARU LASH FLAGSHIP STORE

Company Name:
CYZS INTERIORS

Project Designer[s]:
江奇鴻、曾彥禎

Project Location:
Taiwan

Site Area:
1,701 sq. ft.

The MaruMaruLash flagship store centers on the "smile curve," using curved walls and line curtains to create treatment flows with both privacy and a sense of movement. The facade combines mirrored stainless steel and transparent glass, linking the city with the interior. Treatment areas are arranged in staggered ovals to reduce interference and improve efficiency. Materials include reclaimed old wood, vintage tiles, and preserved original elements to minimize demolition waste, integrating the brand's identity with sustainability. The result is a multifunctional space that supports teaching, observation, and service simultaneously.





Leisure & Entertainment Space

Distinction

FUQING MAOHUA XINGHE SONG PHASE II CLUBHOUSE

Company Name:
**METROPOLITAN DESIGN;
YANG & ASSOCIATES GROUP**

Project Designer(s):
**METROPOLITAN DESIGN,
YANG & ASSOCIATES GROUP**

Project Location:
China

Site Area:
2,685 sq. ft.



Located in the picturesque Fuqing, Fujian Province, the club is a high-end leisure place that combines hotel-style service, garden experience and excellent quality. We are committed to providing customers with a collection of business, leisure, entertainment in one of the multi-functional space, so that every guest can find their own peace and comfort here.

Our design concept revolves around "hotel-like experience, garden within garden, courtyard within courtyard", aiming to provide guests with a private space to enjoy quiet time away from the hustle and bustle of the city. The design of the clubhouse cleverly blends modern aesthetics and natural elements to ensure that every guest can experience quality and comfort. The design of the clubhouse cleverly blends modern aesthetics and natural elements to ensure that every guest can experience quality and comfort.

Distinction

CHIMP CLUB

Company Name:
Wooton Designers

Project Designer(s):
**Ting Li, Hongbo Wung,
Rong Hu, Erpeng Wang,
Xiaohui Li, Honghong Zhu,
Zhuoxun Yang, Jie Qiao,
Wei Li, Lin Lin, Shan Xu,
Shan Hu, Mengting Xie,
Jiazhou Li**

Project Location:
China

Site Area:
21,528 sq. ft.



The concept is inspired by 2001: A Space Odyssey. The appearance of a black monolith provoked thought in the primitive apes, sparking their imagination and creativity. It marks the beginning of a journey through time and the universe — an exploration of life, civilization, and the unknown.

We are exploring how traditional Tibetan cultural architecture can inspire a futuristic spatial design experience. By drawing from the raw materiality, spatial qualities, and natural light inherent in Tibetan vernacular architecture, we aim to construct a mysterious and imaginative environment — a space that serves as a multicultural club for leisure, entertainment, and immersive experiences.



Leisure & Entertainment Space

Distinction

CLASSY MANSION

Company Name:
Matrix Design

Project Designer[s]:
**Wang Guan, Liu Jianhui,
Wang Zhaobao**

Project Location:
China

Site Area:
15,069 sq. ft.



This project redefines the clubhouse by blending Eastern culture with modern lifestyle aesthetics. Originality lies in reinterpreting classic elements like the Forbidden City's purlins and Daming Lake's tranquility into a minimalist, de-commercialized space. Functionally, it simulates real living scenarios and includes diverse amenities such as children's areas, nursing rooms, yoga spaces, and interactive lounges. The spatial design emphasizes fluidity, privacy, and openness with

large-scale compositions, natural materials, and soft colors, creating a serene, luxurious atmosphere. Aesthetically, handcrafted metal screens, textured stone, and heritage crafts like Suzhou embroidery and lacquerware add artistic charm. The use of historic artifacts enriches the narrative, while sustainability is reflected in the reuse of old objects. The result is a space that is functional, beautiful, culturally rich, and spiritually engaging.



Leisure & Entertainment Space

Excellence

ABERDEEN BOAT CLUB

Company Name:
ARTA Architects

Project Designer[s]:
**Arnold Wong, Tat Lai Wong
with Tommy Lee,
Rachel Cho, Vince Lee**

Project Location:
Hong Kong (SAR)

Site Area:
5,000 sq. ft.



How do breathe new life into a historical boat club without losing its character? To revitalize while preserving its essence, the design focused on three key concepts:

Nautical Themes

The design draws from maritime inspiration, with playful portals and forms. Dynamic wooden strips on the facade mimic a boat hull, while The Galley restaurant features a 3D bar counter and vaulted ceilings, echoing boat designs for a nautical experience.

Historical Elements

Key heritage features were preserved, like the hexagonal staircase,

highlighted with layered wood textures. The lounge embraces the existing hexagonal layout and iconic arches for reception, displays, and pathways—blending old and new.

Accent Colours

A sunset-inspired palette—blues, greens, oranges, and yellows—reflects the maritime spirit. At The Galley, these hues harmonise, evoking tranquillity and celebrating members' love of the sea.

Through thoughtful design, the club retains its heritage while embracing modern nautical reinterpretations, staying true to its identity.

Excellence

STACKD PICKLEBALL

Company Name:
SAS PLANNERS

Project Designer[s]:
Julian Shiu, Jason Au

Project Location:
Hong Kong (SAR)

Site Area:
7,032 sq. ft.



Stackd Pickleball is a vibrant, community-focused space that brings people together through sport and design. At its heart is a welcoming social area that offers full views of all five courts, creating a lively hub where players and spectators naturally connect. The shopfront frames the central court like a stage, drawing people in and showcasing the energy within. Overhead, a vaulted baffle ceiling—gently uplit—adds drama and height, giving the space a light, airy

feel. Playful touches like custom basket-weave mosaic tiles nod to pickleball nets, adding texture and personality. Pops of orange inject a fresh, dynamic contrast to the classic dark green palette of racquet sports. Every element is designed to enhance both play and community, making Stackd not just a place to compete, but a place to belong.



Leisure & Entertainment Space

Excellence

COUNTY CLUB AT SEC 107, NOIDA (UTTAR PRADESH)

Company Name:

ARCHI HIVES

Project Designer[s]:

Principal Interior Designer:

Ruby Harsharan Singh,

Principal Architect:

Harsharan Singh,

Architect and Next Generation Lead:

Gagan Kaur,

Senior Interior Designer:

Pooja Yadav, Pradeep Kumar, Rachna

Project Location:

India

Site Area:

55,000 sq. ft.



County Club 107 is a premium residential clubhouse located in Sector 107, Noida, designed by Archi Hives Architects for County Group. Envisioned as the social and recreational hub of a gated community, the clubhouse offers contemporary blend of leisure, wellness, and hospitality. The design employs a warm, timeless material palette of stone, metal, wood, and glass. Interior spaces are zoned to include a reception lounge, wellness spa, gymnasium, banquet hall, and landscaped terraces. A defining element of the

interior experience is the custom-designed light installation at the reception—conceptually inspired by a tree, with branching forms and floral motifs—symbolising growth, rootedness, and renewal. The spatial experience is enhanced through tactile finishes, layered lighting, and thoughtful transitions. Archi Hives provided end-to-end design consultancy, aligning interior expression with County Group's vision of refined community living. County Club 107 is a celebration of comfort, connection, and modern elegance.



Institutional Space

Gold Award

THE YARD | DALIAN CULTURAL CENTER

Company Name:

Neri&Hu Design and Research Office

Project Designer[s]:

Lyndon Neri, Rossana Hu, Zhao Lei,
Ivy Feng, Wenbo Da, Christine Chang,
Siyu Chen, Susana Sanglas,
Feiteng Feng, Haiou Xin, Ziyang Lin,
Lyuqitiao Wang, Greg Wu

Project Location:

China

Site Area:

105,486 sq. ft.

Our design for a new mixed-use creative development is located in the heart of Dalian in close proximity to university campuses and software parks. The concept behind The Yard stems from a reflection on the project's context, situated in a hidden and introverted locus within the city; a small haven of a soon to be forgotten urban memory. As an adaptive reuse project, the aim is to transform it into a destination to serve the local community and students. Its programming consists of galleries, lifestyle retail, hospitality, cinema, theater, and office space.





Institutional Space

Silver Award

MUZIJI

Company Name:
Karv One Design

Project Designer[s]:
Kyle Chan

Project Location:
China

Site Area:
41,646 sq. ft.

Villages carry people's emotional and aesthetic perceptions. Memories of village squares with the design techniques of traditional courtyard houses. Featuring a gathering space under the eaves, a community cafe, a tea space, a familiar square, a youth tribe, and over 15 mixed-use formats, the cultural site "Muziji" was created. It serves as a hub for energy and dialogue, offering more possibilities for human connection and interaction.

The designers hope to create spaces where people can find the relaxation of nature and feel comfortable staying for as long as they wish. In their vision, scenes from their rural hometowns—such as family gatherings in the backyard, the chirping of insects and the babbling of streams on the hillsides and rivers—are among the most beautiful memories. These scenes and elements, filled with shared emotional memories, are reinterpreted in the space using modern, comfortable materials and design language.





Institutional Space

Bronze Award

QUIETLY ENLIGHTEN THE REALM OF LIFE ENERGY

Company Name:
Ju He Digital Creative

Project Designer(s):
深圳矩合數字創意室內設計有限公司

Project Location:
China

Site Area:
6,555 sq. ft.

Longquan Life College takes wisdom as its root vein, takes the energy field and the thinking of the three worlds and nine dimensions as its cornerstone, and feels the numerical system of the Hetu Luoshu and the laws of I Ching, which imply the inheritance of knowledge and the eternal flow of wisdom. Walking into the college, you can feel the vitality of the ancient cultural system.





Institutional Space

Distinction

SPECIALIST MEDICAL

Company Name:
A Gleam Interior Limited

Project Designer[s]:
Rico Tsang, Koko Tam

Project Location:
Hong Kong (SAR)

Site Area:
2,750 sq. ft.



The medical center integrates modern and professional elements to enhance the visitor experience. Curved design features enhance the softness and fluidity of the space, creating a comfortable and visually engaging environment. The entrance showcases a progressive curved design, allowing patients to feel a gradual psychological transition as they enter the treatment area. This effectively reduces anxiety and fosters relaxed interactions between patients and healthcare providers.

Materials are carefully selected, flooring and wallcovering balanced practicality and aesthetics. Durable and easy-to-clean materials ensure the space remains visually appealing while facilitating convenient daily maintenance. The overall design not only meets the functional needs of a medical facility but also prioritizes the comfort and well-being of visitors, making each visit a more pleasant experience. This thoughtful integration of design elements aims to create a welcoming atmosphere that supports both patients and staff.

Distinction

PURE SEMICIRCLES

Company Name:
KTX archiLAB

Project Designer[s]:
**Tetsuya Matsumoto,
Motoaki Takeuchi,
Risa Iriyama,
Sena Uesato, Farid Ziani,
Michinari Kuzukawa**

Project Location:
Japan

Site Area:
1,615 sq. ft.



Pure Semicircles is a preparatory and cram school in Osaka, Japan. The institution focuses on creating a leaning space which stimulates student senses to help them dive into their lessons while still providing a cozy and relaxing environment. The space features semicircular shapes in a variety of aspects and dimensions. The

reception space is a semicircle reflecting on a mirrored median wall to become a full circle. The ceiling is covered in a rippled stainless steel that extends the space further onto the third dimensions while being highlighted with a surrounding linear indirect light.



Institutional Space

Distinction

BETWEEN ARC AND ASPIRATION

Company Name:
BETHEL DESIGN

Project Designer(s):
Xean Lyu

Project Location:
Taiwan

Site Area:
860 sq. ft.



This project envisions a comprehensive design for the communal areas of a congregate housing, which includes the lobby, lounge, gym, and children's playroom. The primary goal is to cultivate shared spaces that are not only interactive but also deeply focused on fostering a sense of community. The design concept is intricately based on a "bottom-up" curved aesthetic that gracefully weaves throughout the entire space. By incorporating a harmonious blend of durable materials—such as natural wood veneer, elegant stone,

sleek stainless steel, and transparent glass—this approach creates a continuous and layered vertical experience that is visually striking. Furthermore, the layout embraces an open design that encourages social interaction while providing diverse functional facilities. This thoughtful arrangement addresses the common challenges found in traditional public spaces, including limited functionality, lack of aesthetic appeal, and poor integration.

Distinction

SJK(C) CHUNG HWA 3 SCHOOL LIBRARY

Company Name:
Lab Two Design

Project Designer(s):
Cosmo Chuah

Project Location:
Malaysia

Site Area:
1,600 sq. ft.



This renovation plan aims to transform a dull old library into a lively, engaging space to boost students' reading interest and time. The design uses a colourful scheme to create themed areas—warm tones for reading, bright tones for discussions—stimulating curiosity and focus. Irregular bookshelves and desks break traditional norms, offering flexible use and storage, while slides add both function and fun. Ambient lighting extends ceiling colour to the walls, visually enlarging the space. Soft lighting in reading zones and shelf lighting ensure comfort and clarity. Corners are equipped with colourful,

comfortable seating for rest or group discussion. Interactive walls like graffiti zones and message boards promote creativity and engagement. This warm yet practical design encourages students to stay, interact, and develop a lasting interest in reading. Through bold colours, playful elements, and thoughtful layout, the library becomes a dynamic learning hub that redefines how students experience reading and space.



Institutional Space

Excellence

WUDAO

Company Name:
KODcrew

Project Designer(s):
李健彬 · 木子健林三

Project Location:
China

Site Area:
3,875 sq. ft.



Steel rebar pulses as veins, neon flows as blood —

Grey beams form the skeletal framework of space, leaving the rest to breathe in negative emptiness.

Light installations rise in passageways through “scaffolding structures”, symbolizing ceaseless refinement; in dance studios, they take the form of “truss architectures”, blending stage-like

drama with versatile functionality for dynamic shoots. Wherever light touches, individuals are empowered to unleash their authentic selves through uninhibited movement.

WOW DANCE STUDIO deconstructs dance's primal DNA through futuristic spatial language.

— Step into the world of “Inorganic Cyberpunk”!

Excellence

TEACHERS LOUNGE FOR HERITAGE AND DIALOGUE

Company Name:
Adrian Chan
Design and Research Office

Project Designer(s):
Adrian Chan (ADRO),
Floor Cover Design:
Rita Wong (SOSA Group Limited)

Project Location:
Hong Kong (SAR)

Site Area:
510 sq. ft.



Nestled within the historic Maryknoll Convent School in Hong Kong, this newly reimagined teachers' lounge transforms an overlooked storage room into a vibrant, multi-use venue for connection, pause, and collaboration. Framed by the 1925 stained-glass window, arched beams and marble wainscoat — elements that could not be tampered with due to the site's heritage status — the minimal intervention is both reverent and contemporary. Through bold furniture design pieces and a layout organized along a central axis that celebrates the symmetry of classical architecture, the project is an assertive gesture that strengthens the dialogue between past and present.

At the heart of the space, a sculptural S-shaped sofa anchors a choreography of movement and gathering, creating zones for individual work, impromptu meetings, chance encounters and collective respite. Intentional design moves — including a geometric rug design — foreground educators' comfort and showcase how adaptive reuse can reframe institutional heritage for contemporary workplace needs.



Institutional Space

Excellence

HAKUSAN GATEWAY TOKUMITSU TAANTO

Company Name:
MR STUDIO Co., Ltd.

Project Designer[s]:
Architects: Nobuaki Miyashita
(MR STUDIO Co., Ltd.),
Lighting Designers: Yukari Atsuta
(LCR, KOIZUMI Lighting Technology Corp.)

Project Location:
Japan

Site Area:
9,365 sq. ft.



This public restroom is near Kanazawa, Japan, a city that flourished during the Edo period as capital of the Kaga Domain. Today, Kanazawa produces 99% of Japan's gold leaf, continuing a tradition over 400 years old. The interior features about 3,000 gold leaf tiles (200mm square) on walls and fixtures. These are crafted using the "Edged Gold Leaf" technique, recognized as UNESCO Intangible Cultural Heritage in 2020. Unchanged for

centuries, the method is vital in restoring National Treasures and Important Cultural Properties. A black-based interior and indirect lighting enhance the brilliance of gold, creating a surreal atmosphere where golden spaces float in darkness. By applying this traditional technique to a roadside facility, the project turns a functional space into a refined cultural experience. It reveals the beauty of Kanazawa's craftsmanship in everyday life.

Excellence

RAY OF LIGHT

Company Name:
AR-kee Design Studio Pte. Ltd.

Project Designer[s]:
Jasen Chia, Ian Vong, John Chan

Project Location:
Singapore

Site Area:
1,561 sq. ft.

The interior design of the Hera Clinic is inspired by the concept of rejuvenation, utilizing angular 'Rays of Light' to organize and define spaces. This design approach respects the clinic's unique layout while fulfilling its functional requirements. Upon entry, angular features guide visitors to a marbled feature wall, leading to the central reception area, which serves as the clinic's focal point. The reception features a bold, angular noir marble counter, complemented by warm wood tones and minimalist lighting, creating an inviting atmosphere. The lounge area is designed with soft tones and angular forms to provide tranquility for patients, enhanced by ambient lighting that simulates natural light and greenery, ensuring a balance of comfort and contemporary elegance.





Shopping Space

Gold Award

XIANGCHENG PARADISE WALK

Company Name:
ARIZON

Project Designer[s]:
JUNWEI SHEN

Project Location:
China

Site Area:
1,560,767 sq. ft.



Xiangcheng Paradise Walk is located in the core business district of Xiangcheng District, Suzhou. As a new-generation experiential Paradise Walk, this project delivers an elevated shopping experience to consumers while catering to diverse social needs.

The design of this project is inspired by "dancing waters in forested streams" running down valleys between mountains. The essence of Suzhou's water towns and classical gardens has been embedded into the design, incorporating elements of flowing water and mountain forests throughout the space.

A groundbreaking feature is the creation of "Moon Island" on indoor upper floors L5-L6, Suzhou's first cross-floor urban natural island spanning over 3,000 square meters. This innovation highlights the project's unique attributes in pioneering social engagement models and experiential business formats.

Project emphasizing ecological harmony, sustainability, immersive environments, and light-filled spaces with particular focus on human sensory experiences within spatial contexts.





Shopping Space

Silver Award

PARADE AT ONE BANGKOK

Company Name:
Lead8

Project Designer[s]:
**David Buffonge, Simon Chua, John Denton,
Wesley Louie, Maciej Setniewski,
Alvin Fong, Ben Guia, Ben Ong**

Project Location:
Thailand

Site Area:
1,291,669 sq. ft.



One Bangkok is Thailand's largest integrated private-sector development, spanning 17 hectares in the city centre. This visionary superblock has become a world-class hub elevating retail, business, tourism and the arts in the capital. With half of its land dedicated to verdant open spaces, One Bangkok offers an urban sanctuary amidst the bustling metropolis.

Parade, one of the key retail precincts within One Bangkok, showcases Lead8's interior design vision that immerses visitors in this biophilic journey. Inspired by Bangkok's adjacent Lumpini and Benjakitti Parks, the city's "green lungs", the design weaves living gardens and green spaces into the retail environment, creating seamless connections between the indoor and outdoor realms.

The interiors celebrate Thai craftsmanship through curated materials and artistic details, fostering wellbeing and a strong connection to nature. Lead8's thoughtful design transforms Parade into a vibrant urban playground, setting a new benchmark for experiential retail in Southeast Asia.





Shopping Space

Bronze Award

DAJI XIANG

Company Name:

Lead8

Project Designer[s]:

**Simon Chua, Allison Li, Castiel Yue,
Raylen Hu, Vic Xu, Zoe Zhang, Line Zhang**

Project Location:

China

Site Area:

538,195 sq. ft.



Daji Xiang is a landmark urban renewal project set within Beijing's Central Axis, a UNESCO World Heritage site.

Occupying a rare and valuable urban space, the former home of Chinese scholar Kang Youwei, the precinct required a careful balance between cultural preservation and contemporary commerciality.

Rich in subtle details, Lead8's interior design of Daji Xiang invites discovery and encourages visitors to engage more deeply with their surroundings. The sunken retail interiors are woven within the precinct's interconnected streets, squares and pocket parks.

Throughout the semi-open interiors, the design honours traditional Beijing courtyard typologies and hutong details – with grey tiles, timber eaves, and brickwork - thoughtfully reinterpreted and integrated with modern materials and forms. Hidden corners reveal delicate craftsmanship and playful features, like the gentle curves inspired by traditional eaves.

Through its fluid spatial sequences and cultural narratives, the design creates an immersive journey that enriches the Daji Xiang experience.





Shopping Space

Distinction

COSMO CHENGDU

Company Name:
Oft Interiors Ltd.

Project Designer[s]:
**CM Jao, Ken Cheung,
Samantha Chan**

Project Location:
China

Site Area:
86,111 sq. ft.



The 8,000-square-meter public realm of COSMO in Chengdu was envisioned as an urban playground for a new generation. More than a circulation space, it is a stage where young visitors encounter architecture as an active participant in their social lives.

Walls dissolve into vast, high-resolution LED surfaces—constantly shifting between wayfinding, branding, and pure visual spectacle—transforming the environment into a living media canvas. A palette of stainless steel, clear glass, and custom-painted finishes reflects

the precision and energy of contemporary city life, rejecting conventional comfort in favor of a bold, urban clarity.

Experiential moments punctuate the journey: interactive installations spark curiosity; adaptable event zones invite impromptu gatherings; social hubs become backdrops for stories shared in real time. Every detail is crafted to amplify connection, movement, and self-expression—turning the public realm into both a destination and a cultural signal of youthful ambition.

Distinction

JLC

Company Name:
CAN Design

Project Designer[s]:
**Stephen Chow, Stephen Ip,
Ada Ng, Cynthia Tsui,
Jessica Zhao, Xutao Wang,
Jason Yan, Sharon Chan,
Audrianna Chung, Annie Wong,
Sarah Ma, Moses Chan**

Project Location:
China

Site Area:
990,280 sq. ft.



Nestled in the heart of Nanjing's bustling Xinjiekou district, widely recognized as the "No. 1 Commercial Avenue of China," JLC emerges as a striking new landmark that redefines the urban experience through a seamless blend of retail, culture, and social vibrancy.

CAN has delivered a holistic design solution for JLC, including Retail Planning Enhancement, Facade Design, Interior Design, and Wayfinding & Signage Design. This integrated approach ensures a cohesive and immersive experience across all user touchpoints,

reshaping the retail landscape of Xinjiekou. Drawing inspiration from the historical "Eight Scenic Scenes of Jinling," CAN reinterprets Nanjing's heritage through a contemporary spatial language.

In collaboration with Hongkong Land, CAN brings fresh and youthful energy into the city, setting a new benchmark for urban revitalization. More than just a commercial destination, JLC enriches the cultural identity of Nanjing and elevates the everyday experience in one of China's most dynamic districts.



Shopping Space

Distinction

SHUN FOOK BARN

Company Name:
ARK Associates Limited

Project Designer(s):
William Liu

Project Location:
Hong Kong (SAR)

Site Area:
33,368 sq. ft.



The revitalization of Ho Shun Fook Mall in Yuen Long, Hong Kong, aims to transform an existing structure into a vibrant, community-centric destination. Rebranded as Shun Fook Barn, the project reflects the area's historical and agricultural roots through a "Farmhouse" concept that combines traditional elements with contemporary design. The facade features barn-like roofs and trellises for climbing plants, enhancing its visual appeal and sustainability. Redesigned community engagement and pedestrian

flow are emphasized, with new entrances to attract foot traffic and a layout that guides visitors to dining areas along a canal. The interior continues the "Farmhouse" theme, incorporating natural materials and unique design elements, such as a tree column sculpture and boutique-style shop fronts. Overall, the revitalization creates a lively, engaging space that enhances local community interaction while promoting sustainability, establishing the mall as a distinctive urban landmark.



Shopping Space

Excellence

AIRSIDE

Company Name:
Nan Fung Development Limited

Project Designer[s]:
**Snohetta,
Ronald Lu & Partners (RLP Asia),
Ove Arup & Partners Hong Kong Ltd.,
Lighting Planners Associates**

Project Location:
Hong Kong (SAR)

Site Area:
700,000 sq. ft.



At the heart of Kai Tak, AIRSIDE's 700,000 ft² retail complex reinterprets Hong Kong's textile heritage through contemporary design. The multi-storey shopping destination features an underground shopping street connecting to Kai Tak Station, with interiors that pay homage to Nan Fung Group's manufacturing roots through textile-inspired elements. The retail atrium showcases upcycled fabric spandrel panels that guide visitor flow, while weaves, folds and cuts in the architecture mirror qualities of fabric

tailoring. Surrounded by articulated greenery and situated near Kai Tak Sports Park, the development seamlessly blends nature with urban convenience through sustainable features like automated bicycle parking. As Hong Kong's first building to achieve seven major green and smart certifications, every sustainable detail has been meticulously crafted, establishing AIRSIDE as a landmark where commerce, community and environmental innovation intertwine.

Excellence

LONGFOR CHANGSHA MOON ISLAND

Company Name:
**WUXI & SHENZHEN WUXI
DESIGN CONSULTANT CO., LTD.**

Project Designer[s]:
**WU XI, XU CAIHONG, YANG TINGCHUN,
XU SHANSHAN, ZHOU WEI**

Project Location:
China

Site Area:
430,556 sq. ft.



The design area of the project is about Forty thousand square meters, and the design team provides services such as building facade design, public space design, IP design, shopping mall display design and construction design, etc. The design team is in line with the concept of "commercial and leisure clubhouse" and the need to attract and enhance commercial consumption power. In line with the project's concept of "commercial and leisure lounge" and the need to attract and enhance commercial spending power, the design team analyzed the needs of the local consumer groups and the owner in advance, and formulated a spatial dynamic layout and design scheme that meets the needs, which not only conforms to the commercial logic, but also demonstrates the innovative design concepts.



Retail Space

Gold Award

READING MI, ZHUHAI

Company Name:
Panorama Design Group

Project Designer[s]:
潘鴻彬、李明駿、尹葉青、
陳雅芳、連聰達、鐘展羽

Project Location:
China

Site Area:
2,500 sq. ft.



In today's digital age, physical bookstores like Reading Mi serve as sanctuaries for the soul. The design embodies the essence of "Mi": exploration and discovery, envisioning a "garden of knowledge." More than just a bookstore, it is a peaceful realm where architecture becomes a harbor for the spirit. The retail zone is defined by curved, self-illuminating wall units that showcase books, gifts, and stationery, while abstract flower-shaped ceiling features symbolize vitality and inspiration. The kids' area, designed in an oval shape, fosters imagination with a multifunctional mini theatre that supports storytelling and performances. In the cafe zone, towering bookshelves mimic trees, creating a forest-like ambiance, and a bright seating area encourages relaxation and enjoyment of natural light.





Retail Space

Silver Award

1-7 BREAD AT KING GLORY PLAZA STORE

Company Name:
Matrix Design

Project Designer(s):
Wang Guan,
Liu Jianhui,
Wang Zhaobao

Project Location:
China

Site Area:
1,023 sq. ft.



This bakery blends modern warmth and organic design elements to create a welcoming, immersive space. Through panoramic glass partitions, the boundary between indoor and outdoor is dissolved, offering a seamless healing experience from the street to the store. Key features include a prominently placed product display, Instagram-worthy backdrops, and strategically placed greenery that enhance the store's natural ambiance. Sculptural elements above the

product zones guide customer movement, while a mirror-polished ceiling adds an artistic touch. Natural materials like wood and matte finishes create a tactile and comforting atmosphere. The design not only focuses on aesthetic appeal but also on functionality, offering a space that encourages customers to pause, interact, and connect with both the space and the products in a serene environment.





Retail Space

Bronze Award

TRE GAZZE HOME DONGGUAN

Company Name:
TRE Gazze

Project Designer[s]:
Hugo

Project Location:
China

Site Area:
400 sq. ft.



The space is themed "Breath·Magpie's Nest," guiding visitors to slow down and experience the freedom of the soul and a leisurely lifestyle.

The transitional courtyard creates a landscape within a limited space, with daylight pouring down from above. The suddenly open view brings an instant sense of spiritual release. The exhibition hall, through ingenious design techniques, deliberately reduces the scale to bring people closer together. The ubiquitous gaps bring a sense of breath to the space, which is not only the path of daylight but also the point of interaction for gazes.





Retail Space

Distinction

HOUSE OF SHINSEGAE

Company Name:
A Work of Substance

Project Designer[s]:
**Maxime Dautresme,
Seoyoon K**

Project Location:
South Korea

Site Area:
78,286 sq. ft.



We reimagined the travel and retail space in the heart of Shinsegae's Gangnam flagship, through a gastronomic experience, curated wine and premium cellar, and a living mezzanine, anchored by a connecting central atrium. Moving past transactional retail, we envisioned an environment that comforts and invites customers to linger. By capturing the essence of a home—familiar, layered, and soft—we designed a retail space where ritual replaces routine. Drawing inspiration from 1950s mid-century design, we embodied

the era's refined glamour through material richness. Colourful, deep-toned fabric and warm timber create an atmosphere that feels both opulent and inviting. More than a transitional space, the atrium is reimagined as an inviting social anchor—the core that radiates all light. This was underpinned by the conceptual framework of 'discovery as ritual,' where material contrasts, concealed reveals, and a circadian lighting system that mimic's time's rhythm transforms shopping into spatial storytelling.

Distinction

HONMARU

Company Name:
SAMURAI

Project Designer[s]:
**Kashiwa Sato,
Yoshihiro Saito,
Nagiza Uchino**

Project Location:
Japan

Site Area:
570 sq. ft.



In response to the drastic decline of bookstores in Japan—now less than half of what they were 20 years ago—novelist Shogo Imamura initiated a shared bookstore project to spark change. Creative director Kashiwa Sato led the branding, from naming and logo design to merchandise and spatial design. Drawing from Imamura's background as a historical novelist, he named the project "HONMARU," inspired by a castle's central area. The logo combines "HON" (book) and "MARU" (circle). The bookstore concept treats

individual shelves as small tenants, forming a mall-like, city-like community. A signage system inspired by library shelf dummy brings cohesion while highlighting diversity. Despite its compact space, the bookstore offers infinite depth and richness. It fosters a mature, book-centered community and acts as a cultural supporter in its host locations. As a result, the concept is gaining traction, with offers for new openings arriving from across Japan.



Retail Space

Distinction

3D SNAP

Company Name:
REIICHI IKEDA DESIGN

Project Designer(s):
REIICHI IKEDA DESIGN

Project Location:
Japan

Site Area:
170 sq. ft.



"3D SNAP" is a shop where you can scan your beloved dog with a special 3D camera and create a one-of-a-kind figurine of your dog using a 3D printer.

Our planned store is in Higashi-Azabu, Minato Ward, and it will be in a compact space of 16.5 square meters. For the facade display, which serves as the core element of the space, we are producing a round object that will serve

as the backdrop for the display stand. The round object symbolizes the single "point" of one's "unique memory." Additionally, drawing inspiration from the nearby Tokyo Tower, a neighborhood landmark, we incorporated elements of its truss structure into the design of our reinforcement materials.

Despite its compact size, the space embodies the shop's relationship with the local area and clearly communicates its purpose.

Distinction

BAMFORD FLAGSHIP STORE (HONG KONG)

Company Name:
Linkus Concept Studio Limited

Project Designer(s):
Linkus Concept Studio Limited

Project Location:
Hong Kong (SAR)

Site Area:
600 sq. ft.



Located in the vibrant Star Street district of Admiralty, this project marks Bamford's first retail store in Hong Kong. Our design studio collaborated closely with Bamford to bring their vision to life, creating a space that reflects their commitment to sustainability, craftsmanship, and harmony with nature, while resonating with Hong Kong.

From concept to execution, every detail was thoughtfully designed to embody Bamford's ethos. The debossed tagline on the walls, tone-on-tone finishes, crushed stone flooring, and solid wood shelving

and racks were meticulously crafted to create a calm, harmonious atmosphere. A highlight of the store is the handcrafted heart-shaped wooden art piece, handmade by our design team using precisely carved wood slices, symbolizing Bamford's artisanal heritage.

Our team also managed construction and project delivery, ensuring flawless execution aligned with Bamford's philosophy. This project harmoniously blends Bamford's English heritage with Hong Kong's urban charm, offering an inviting and timeless retail experience.



Retail Space

Excellence

NEBU

Company Name:
Once Design Studio Limited

Project Designer(s):
Eric Fung

Project Location:
Hong Kong (SAR)

Site Area:
300 sq. ft.



As ephemeral as snowflakes, capturing fleeting moments

In the bustling heart of Mong Kok, the Nebu store emerges as a serene and beautiful enclave, akin to a gently falling snowflake—light and elegant. This is a dreamlike space dedicated to Snowflake Crisps, serving not just as a retail venue but as an artistic sanctuary where sensory and emotional experiences intertwine. It exemplifies how to transform “the beauty of the moment” into an unforgettable shopping experience.

Soft whites interwoven with pale blues evoke the purest light of a winter morning. Combination of Stainless steel and sanded acrylic paired with gentle lighting emit a natural warmth, creating a stunning contrast with the ethereal Snowflake Crisps. Customers linger in this space, making it easy for them to recall the brand in the future, thereby enhancing brand recognition.

Excellence

SNOW PEAK POP-UP STORE AT CHENGDU MIXC

Company Name:
Matrix Design

Project Designer(s):
**Wang Guan, Liu Jianhui,
Wang Zhaobao**

Project Location:
China

Site Area:
1,399 sq. ft.



Located in Chengdu, this project introduces a unique “slow-flash store” concept, blending sustainability with modular design. Drawing inspiration from bamboo, a symbol of growth and environmental consciousness, the design integrates natural materials such as European beech wood and stainless steel, creating an aesthetically pleasing and functional display space. The design incorporates reusable and easily reassembled components, ensuring long-

term adaptability and reducing environmental impact. The use of eco-friendly materials aligns with the brand's commitment to sustainability, while the modular approach allows for flexible customization, making the space not only visually appealing but also practical. The overall design philosophy combines natural elements with modern sensibilities, fostering a connection between nature and urban life.



Retail Space

Excellence

CASARTE REFRIGERATOR EXPERIENCE CENTER

Company Name:
Shenzhen Rongor Design & Consultant Co., Ltd.

Project Designer(s):
秦岳明、陳開貽

Project Location:
China

Site Area:
3,014 sq. ft.

This project, themed "Nature's Realm · Tech Haven," breaks away from traditional appliance retail models, creating an immersive experiential space that fuses brand ethos with future lifestyles. From the entry portal through the exhibition zones to the circular "Plaza" and refined lounge, precision control of scale, color, and lighting crafts a distinct emotional progression and circulation flow. Diverse living scenarios are seamlessly embedded throughout. The central "Plaza," paying homage to the Pantheon, serves as both the spatial nexus and a versatile hub supporting diverse events.



Excellence

DOMAIN

Company Name:
QIANG DESIGN

Project Designer(s):
王鏘力

Project Location:
China

Site Area:
1,507 sq. ft.



Infusing Youthful Vitality into the Multi-Dimensional Expression of Wood Design

Departing from traditional woodcraft aesthetics, the design embraces a bold and youthful vitality to convey the brand's distinctive design philosophy and contemporary sensibility. It explores the multi-dimensional beauty born from the material's inherent plasticity.

Within a 140-square-meter space, the challenge lies in accommodating diverse functions—including a reception area, water bar, meeting zone, sample display area, and tea room—while maintaining product presentation as a core focus. After carefully analyzing these spatial needs, the design deliberately integrates the products into the environment, allowing them to exist naturally within the spatial narrative. Lighting plays the role of a subtle mediator—both dividing and connecting zones—guiding the flow of experience and unifying the space through a cohesive visual rhythm.



Retail Space

Excellence

WHITE

Company Name:
HBM

Project Designer(s):
王強、聶祖蘭、韋凱鈞、
聶東木、VV

Project Location:
China

Site Area:
861 sq. ft.



A showroom that sells colors, yet builds its spiritual center in white. Through a repeated triangular structural rhythm and an abstract square fireplace, we create a calm and contemplative atmosphere. In a minimal composition, color returns to its perceptual essence. The negotiation area, tea room, and sample display together bridge the duality of commerce and spirit.

White is not emptiness, but a vessel for emotion—Where time, tinged with color, gently diffuses into the warmth of memory.

Excellence

KAM PEK MARKET

Company Name:
Linehouse

Project Designer(s):
Briar Hickling, Ricki Van Het Wout, Hazel Francisco

Project Location:
Macau (SAR)

Site Area:
10,764 sq. ft.

Linehouse was commissioned with the revitalization of Kam Pek Community Center, an art deco building located along the historic street of San Ma Lo in Macau, into a food market. The project is part of a broader development aiming to preserve and revitalize the historic neighborhood as a cultural destination. The project brief was to create a dynamic culinary and social destination, revitalizing the avenue with an exciting, fresh and charming food hall destination bringing together tourists and locals alike.

Linehouse's overall concept was to preserve the past whilst embracing the future, blending preservation and innovation, retaining the building's original architectural facade while incorporating modern interpretations of local street culture. This approach ensures the building's legacy as a community hub for leisure and hospitality. The Kampek Market is a modern heirloom, a place that references the unique history of the street it sits on, while looking ambitiously to the future.





Hotel Space

Gold Award

THE STANDARD SINGAPORE

Company Name:

Ministry of Design Pte. Ltd.

Project Designer[s]:

Colin Seah, Joyce Low, Damien Saive,
Kevin Leong, Fon Lertrattanakit, Zhang Hang,
Karyl Tan, Ahlina Ismail, Lisa Koswara,
Chan MingLi, Richard Herman, Tasminah Ali,
Rais Rahman, Iqbal Yusof, Azilawati Wanti

Project Location:

Singapore

Site Area:

58,093 sq. ft.



The Standard Singapore:
Tropical Mid-Century Modern

The Standard Singapore redefines its signature mid-century modern aesthetic within Singapore's "City in a Garden," playfully infusing tropical botanical elements throughout its unique design.

Upon arrival, guests encounter an oversized terrarium reception, featuring Eric Tobua's whimsical botanical art, a playful nod to The Standard Hollywood. This lush theme continues into Kaya Restaurant with 3D embroidered tropical floral mural. The lifts boast The Standard's iconic red.



Custom furniture and lighting define the hotel's distinctive look. Kaya Restaurant features an 'S' shaped banquette and bespoke communal tables. The lobby showcases "starburst" & "orbiting" light installations. Guestrooms echo The Standard NYC, with its timber canopy. Despite a compact footprint, the hotel prioritizes efficiency and guest experience. The Reception and Cafe flow seamlessly, with multifunctional design evident in areas like the DJ/Cafe counter. Compact guestrooms maximize space, while suites with double-height ceilings, offer respite and generous views.





Silver Award

MANDARIN ORIENTAL QIANMEN BEIJING

Company Name:

CCD/

Cheng Chung Design (HK) Limited

Project Designer(s):

CCD/Cheng Chung Design

Project Location:

China

Site Area:

13,693 sq. ft.



The project is located at No. 1 Caochang 10th Alley, in the historic Caochang Hutong near Qianmen Street, Beijing. Rich in over 600 years of folk culture, the area embodies the vibrancy of the Forbidden City and the essence of traditional Chinese life. Commissioned by Beijing Tianjie Group Co., Ltd. and designed by CCD/Cheng Chung Design, the brief was to enhance municipal infrastructure while preserving the architectural character and human scale of the Hutong. The design aims to improve the local environment and quality of life for residents by restoring the existing built fabric with sensitivity. Completed in 2024, this project approached architecture, interior, and landscape as a continuous dialogue between nature, space, and culture. Respecting the Hutong's unique historical texture, the design preserves the original courtyard layout and architectural style.





Hotel Space

Bronze Award

BRANZ MEGA KUNINGAN

Company Name:
FIELD FOUR DESIGN OFFICE

Project Designer[s]:
Toshiyuki Okubo
(FIELD FOUR DESIGN OFFICE),
Wataru Kurihara & Terasaki Ryotaro
(SHIMIZU CORPORATION)

Project Location:
Indonesia

Site Area:
1,263,608 sq. ft.



With the theme of "Urban Oasis," this project creates green gardens and residences that stand out amid the bustle of a developing city. It consists of commercial and parking facilities on the lower floors and two high-rise towers. The condominium tower is part of Tokyu Land Corporation's 'BRANZ' brand, while the serviced apartment tower, "Swissotel Living," is operated by France's Accor Group.

Aiming for a fusion of Japan and Indonesia. Vertical grilles are used throughout to harmonize "delicacy and grandeur," creating a sense of "surprise, comfort, and tranquility." We placed particular emphasis on "transitional spaces (intermediate zones)" that evoke anticipation and facilitate a shift in mood.



Distinction

ORCHID GARDEN

Company Name:
**Hangzhou Great Scale
Architectural Design Co., Ltd.**

Project Designer(s):
李保華、周佳峰、甘凱雯、余澤浩、
劉雄、俞佳盈、丁雯菲、章澤城、
鄭依依 (軟裝)、林飛旋 (軟裝)、
吳照塔 (機電)、李曉波 (結構)

Project Location:
China

Site Area:
118,403 sq. ft.



Orchid garden is nestled in Longwu, located at the rear mountain of West Lake in Hangzhou. Longwu has been renowned for producing the famous West Lake Longjing tea since the late Song Dynasty. Comprising a cluster of Jiangnan-style garden architecture, Orchid garden spans 11,000 square meters and features 73 guest rooms, five restaurants, three tea houses, and a fitness center.

Following the relocation of the Southern Song Dynasty's capital to the south, Hangzhou entered a millennium of prosperity. The cultural, artistic, and aesthetic legacy of the Song Dynasty continues to profoundly influence the city. The hotel's design integrates the Song Dynasty's aesthetic philosophy, lifestyle, and artistic elements, offering visitors a unique immersive experience of garden exploration.

Distinction

CAPSULETRANSIT MAX @ KLIA2

Company Name:
Blu Water Studio

Project Designer(s):
**Lai Siew Hong, Mak Sook Har,
Kenny Tan, Elaine Yap, Yan Ng,
Mohd Airie Bin Ruslan,
Chin Kim Kong, Ashley Ting**

Project Location:
Malaysia

Site Area:
20,000 sq. ft.



CapsuleTransit MAX at KLIA2 redefines the airport experience with a sleek blend of futuristic design and comfort. Drawing inspiration from Kuala Lumpur's tin mining heritage, the space transitions from raw, angular forms to smooth, polished curves, creating a modern yet welcoming environment. Travellers are greeted by an architectural facade of fins, leading into a public area where clean lines and earthy tones evoke a calm, contemporary feel. Guestrooms feature a chic, futuristic design with cool blue lighting radiating from a central

iridescent 'lantern'—a dual-function clothes rack and room divider. Corridors immerse guests in vibrant Malaysian landscapes, from lush rainforests to vivid seascapes, enhanced with playful local food illustrations and witty phrases. CapsuleTransit MAX elevates transit into an engaging and memorable experience, seamlessly blending aesthetics with functionality in a thoughtful tribute to Malaysia's cultural richness.



Hotel Space

Distinction

HS INN

Company Name:
IN-Xian Design

Project Designer[s]:
周翔秋·王維綸

Project Location:
Taiwan

Site Area:
11,302 sq. ft.



In addition, under the premise of resonating with the nature and cultural spirit of this place, we integrate the materials, forms and colors of the famous Redbrick Bagua kiln in Huatan-Changhua into the corners of this project.

As a starting point to welcome its guests, the entrance facade is designed with an external wall, which uses light expanded metal mesh to form an arc frame displaying the abstract look of a Bagua

Kiln. Going upstairs, after the elevator door opens, tourist can see a brick red tunnel, which brings an experience of compressed space. Then, being guided by the light from the reception lobby, tourist will approach to the public space formed by the redbrick vault and concrete structure, delivering an open and roomy feeling. Such space experience allows the tourist choosing to stay here to instantly and easily fit themselves in and experience the rustic and local cultural atmosphere.

Distinction

HUAYA YUNMAN HOTEL

Company Name:
GEOSUM Design

Project Designer[s]:
Luo Wei, Chen Chong, Chen Ting

Project Location:
China

Site Area:
64,583 sq. ft.

Located beside Yueyang Tower, this boutique hotel is transformed from a 70-year-old hospital into a poetic retreat that merges history with modern luxury. The design preserves and reinforces original materials—exposed brick, wood beams, and layered courtyards—while introducing new circulation, vertical skylights, and multi-level platforms to meet functional needs. Inspired by Dongting Lake's landscape and Xiang-Chu culture, the interiors use local materials such as granite, reed stems, and old ship wood to reflect time, texture, and place. Rather than superficial restoration, the project brings forgotten memories back to life through intelligent renewal and understated elegance. Structural challenges are addressed through carbon fiber and steel reinforcements that remain visually unobtrusive. Sustainable practices include using native, low-impact materials, minimizing processing, and engaging local artisans. The result is a culturally rooted, emotionally resonant space that redefines hospitality through restraint, storytelling, and timeless regional identity.





Hotel Space

Distinction

URBAN SANCTUARY | ARTYZEN NEW BUND 31 SHANGHAI

Company Name:

Neri&Hu Design and Research Office

Project Designer[s]:

Lyndon Neri, Rossana Hu,
Akrawit Yanpaisan, Scott Hsu,
Aleksandra Duka, Peng Guo, Danyan Jin,
Andy Chen, Qiucheng Li,
Elan Tao, Tessie Wan, Paz Ma, Echo Li,
Dania Angela Flores, Ambesh Suthar,
Kathy Hu, Bella Lin, Greg Wu, Becky Zhang,
Nicolas Fardet, Yin Sheng, Lili Cheng,
Junho Jeon, Luna Hong, Lyuqitiao Wang,
Haiou Xin, July Huang, Yuqi Zhong

Project Location:

China

Site Area:

287,396 sq. ft.



Situated amidst a sea of skyscrapers in the Pudong District of Shanghai, the Artyzen NEW BUND 31 Shanghai is a key destination, featuring 202 guest rooms. Conceptually, the hotel is conceived of as having been carved from a single monolithic mass. On the ground floor guests are greeted by a subtly textured concrete facade, with

a scalloped pattern that finds resonance in the feature arches of the performing arts center. In the ground floor lobby, a large opening punched through to the south facade near the ceiling allows natural light to flood the seemingly enclosed space.



Hotel Space

Excellence

THE MILLEN PENANG, AUTOGRAPH COLLECTION

Company Name:
Blu Water Studio

Project Designer[s]:
**Lai Siew Hong, Mak Sook Har,
Kenny Tan, Valerie Tham,
Shiang Qian, Jing Wen,
Amanda, Lawrence, Sher Rou**

Project Location:
Malaysia

Site Area:
42,300 sq. ft.



A new chapter in Penang's design legacy, The Millen Penang transforms the former Northam Hotel into a culturally rich, design-forward destination along Millionaire's Row. Rooted in the island's colonial past and Chinese tycoon heritage, the hotel blends British sophistication with local nuances to create an immersive, emotionally resonant experience.

The 144 guest rooms pair freestanding tubs with panoramic views and a seamless blend of neoclassical and Asian-inspired

narratives. Public spaces — anchored by a grand spiral staircase and monochrome marble floors — offer a balance of elegance and comfort, from the nostalgic all-day dining space to the playfully curated pool deck on Level 9. The Nut & Meg Spa, with its locally inspired apothecary counter, redefines wellness through personalisation and cultural storytelling. At The Millen, every moment — from arrival to rest — is designed to connect guests not just to a place, but to Penang's vibrant past and evolving present.

Excellence

CANOPY BY HILTON OSAKA UMEDA

Company Name:
NIKKEN SEKKEI LTD.

Project Designer[s]:
**Yuko Tsukumo, Mitsuhiko Imai,
Iori Sekizawa, Natsuki Tani,
Kenji Yonezawa**

Project Location:
Japan

Site Area:
196,291 sq. ft.



Canopy by Hilton is a lifestyle brand rooted in the concept of "neighborhood," offering designs and services that reflect local character. For Osaka, the design theme is "HACK Osaka"—a playful approach to reimagining the city's culture by blending tradition with fresh ideas and a sense of humor. Targeting millennials who embrace change and individuality, the hotel seeks to express a "new Osaka lifestyle." It reflects the city's vibrant, humorous spirit while aligning with Canopy's philosophy of local connection.

Public spaces feature colorful Osaka-inspired artwork along with interactive elements such as seesaws and communal furniture that encourage guest interaction and engagement. Guest rooms include unique design touches like "canopies" over beds with graphics inspired by Hideyoshi's gourd standard, retro-style minibars, and the Fukusuke doll — a symbol of luck and Osaka's whimsical history. Through this creative reinterpretation of Osaka's identity, Canopy offers a hotel experience that is modern, engaging, and distinctly local.



Hotel Space

Excellence

NOL HAKONE MYOJINDAI

Company Name:
NIKKEN SEKKEI LTD.

Project Designer[s]:
Tatsunori Ito, Ai Ito, Wan di

Project Location:
Japan

Site Area:
42,862 sq. ft.



This project is the renovation and rebranding of an exclusive hotel for members with 39 guest rooms as the second branch of "nol" following its Kyoto flagship.

Guided by the design keywords — Organic, Rustic, and Emotional — the renovation combined simple, natural materials with touches of metallic shimmer and sheen, as well as carefully crafted lighting effects.

By making the most of the existing elements, the design focuses on "connecting the hotel's memories through design," creating a space where guests can relax and unwind in their own way.

Original artworks and selected interior features from before the renovation were retained as "legacy" elements, while a unified color palette integrates the old and the new.

Excellence

THE OSAKA STATION HOTEL, AUTOGRAPH COLLECTION

Company Name:
A.N.D. + FOO, NOMURA Co., Ltd.

Project Designer[s]:
Ryu Kosaka, Masao Nemoto,
Masahiro Hisakane, Iwaki Yusuke,
Chikako Hatanaka

Project Location:
Japan

Site Area:
34,445 sq. ft.



"The Terminal of Journeys, Weaving Time and Space"

The Osaka Station Hotel:
A Landmark on the Site of the First Osaka Station

Located in the vibrant Umeda district of Osaka, the Osaka Station Hotel has opened its doors within a newly constructed skyscraper directly connected to Osaka Station. For our client—a railway company that played a pivotal role in shaping western Japan—the

hotel's location on the site of the original Osaka Station is profoundly significant. To honor the history, culture, and value of this land while passing it on to future generations, the brand concept was defined as "THE OSAKA TIME."

In response to this vision, we developed a design philosophy called "A Journey Through Time and Space," drawing on memories of Osaka Station and railway history. This theme was introduced to the design elements throughout the hotel.



Sample Space

Gold Award

ORIENTAL VILLA

Company Name:
C&C DESIGN CO., LTD.

Project Designer[s]:
**Peng Zheng, Ye Kang,
Chen Lili, Chen Jiajun,
Li Jiaying, Zhu Guoguang,
Li Lu, Liang Jiasheng**

Project Location:
China

Site Area:
3,229 sq. ft.



Modern cities, forests of steel and concrete, are efficiency - centered. Houses are reduced to cement boxes, mere shelters rather than homes. A true home should be warm and loving, a space for family and neighbor interaction. For Chinese people, an ideal home includes a garden and a courtyard.

The Dongyue Jiuyuan project fulfills this ideal. We aim to incorporate Chengdu's unique relaxed vibe into the design, creating a residential space that is poetic, communicative, and full of love, transcending mere living.

For this project, we focus on three key concepts: relaxation, social interaction, and micro - vacation. Relaxation reflects the times and reaffirms emotional value in functional design. Social interaction acknowledges our social nature; family life involves parent - child bonding, hosting guests, and communication. Micro - vacation responds to life's demands. Amidst fast - paced city life, home should be a relaxing, poetic retreat.



Sample Space

Silver Award

CRANE GARDEN SONG

Company Name:
SUOFEIYA HOME COLLECTION CO., LTD.

Project Designer[s]:
黃小樑 (索菲亞設計中心)

Project Location:
China

Site Area:
5,005 sq. ft.



"Crane Garden Song" follows the life philosophy of scholars and literati in the Song Dynasty, reconstructing a new realm of contemporary Song-style life through a centrally symmetrical courtyard layout, meticulously crafted woodworking craftsmanship, and the creation of natural and poetic scenes. The design unfolds around three dimensions: "form, meaning, and rhythm," integrating traditional etiquette with modern functions. Elements such as pine stones, flowing water, calligraphy, and paintings are used to create landscapes, forming an immersive living space that combines the core of Eastern spirituality with contemporary aesthetic experiences through a garden-style courtyard scene.





Sample Space

Bronze Award

JARDINI

Company Name:
ARK Associates Limited

Project Designer(s):
William Liu

Project Location:
Hong Kong (SAR)

Site Area:
6,070 sq. ft.



The Sales Gallery, designed for CITIC in the prestigious Jardine's Lookout, offers a luxurious and exclusive experience for prospective homeowners. This space transcends typical sales venues by prioritizing privacy and personalized attention, with viewings available by appointment only. Visitors are invited to explore a thoughtfully designed processional architecture that reveals each space sequentially, creating an engaging journey that enhances the overall experience.

Central to the design is a meeting hall featuring four private booths, elegantly furnished for intimate discussions. These booths provide a comfortable and discreet environment, allowing for in-depth interactions tailored to individual needs. The interior layout balances openness with privacy, using varied materials and lighting to create a warm atmosphere.

The show units reflect the serene Jardini style, characterized by elegant lines and natural materials, offering a tranquil escape from urban life. Overall, the gallery is meticulously curated to cater to discerning clients seeking a sophisticated living experience.



Sample Space

Distinction

ONE CENTRAL PARK

Company Name:
LSD Interior Design

Project Designer[s]:
**Kot Ge, Dai Qiangtao,
Yang Junting**

Project Location:
China

Site Area:
3,175 sq. ft.



The design emphasizes spatial integrity through the use of unified materials and tones across elevator halls and entrances, creating visual flow and continuity. Artworks, sculptural furniture, and a restrained black-and-white palette shape a serene atmosphere. Material contrasts in flooring and wall finishes subtly define transitions between zones. In the living room, diverse textures—

such as travertine, linen, and flannel—compose a layered spatial language. A “weak boundary” concept blends the balcony with the living area, allowing light and air to move freely. The dining room centers on a round table, with art and lighting expanding the visual field. A sunken corner space softens with curved cabinetry and material juxtapositions, expressing quiet elegance.



Sample Space

Excellence

POLY BREEZE OF LIFE

Company Name:
Epic Design Co., Ltd. - Guangzhou

Project Designer[s]:
AUSTIN SUEN, LIN TONG

Project Location:
China

Site Area:
4,025 sq. ft.



Poly Breeze of Life is strategically located at the intersection of the Haihe Education Park and the Meijiang Ecological Zone. It inherits the millennia-old cultural heritage of the Haihe River and embraces the vibrant prosperity of the modern city. Adjacent to prestigious universities, the project is imbued with a scholarly atmosphere, creating a spiritual haven for urban elites. Nearby are the Meijiang Park and the Old Haihe River Park, painting a picturesque and poetic

lifestyle. The design team has captured the essence of "Elegant Charm of Tianjin" as its core, integrating the inclusive spirit of the Haihe River and the elegant DNA of concession-era architecture into the spatial narrative. Through the interplay of material textures and light and shadow, it delineates a contemporary aesthetic of dwelling amidst Tianjin's cultural heritage.

Excellence

SPATIAL ART TOUR

Company Name:
HODDI design

Project Designer[s]:
HODDI 禾邸設計

Project Location:
Taiwan

Site Area:
579 sq. ft.



Drawing from the red and blue tones of the singular chair, the furnishings subtly infuse art into the space. The deep blue sofa resonates with the tiled wall artwork, with its varied densities reflecting the deconstructed geometry and color compositions of the chair. Above the chair, the red vertical extension disrupts the original design prototype, forming a spatial partition. This transformation

of the miniature architectural point into a plane merges with the red geometric form of the pendant lamp and the wall-mounted artwork extending from the dining table, consistently reiterating the decomposition and reconstruction of color and form, turning the home into a work of art rich with design intrigue.



Sample Space

Excellence

SUOFEIYA GLOBAL CENTER WHOLE HOME PAVILION

Company Name:
SUOFEIYA
HOME COLLECTION CO., LTD.

Project Designer(s):
黃小樑 (索菲亞設計中心)

Project Location:
China

Site Area:
9,149 sq. ft.



This project inherits the brand's French genes and combines modern design techniques, with an open-scene layout and lifestyle experience as its core philosophy. It constructs six themed areas: Fashion Zone, Intellectual Zone, Self-Indulgence Zone, Trend Zone, Parenting Zone, and Public Zone. By integrating high-end materials

with environmental concepts and colliding geometric modules with light-and-shadow materials, it achieves an innovative resonance between functionality and artistic aesthetics, establishing a distinctive and futuristic whole-home lifestyle declaration, and conveying Suofeiya's brand philosophy of "Future Home."



Living Space

Gold Award

X HOUSE

Company Name:
Tanliyu Studio

Project Designer(s):
譚立予、蕭勇華

Project Location:
China

Site Area:
4,306 sq. ft.



Looking from the dining room on the basement floor towards the staircase behind the white wall, it is like a deep niche. This is precisely the center of the entire house, the spiritual territory of a home. Living in this White House meticulously crafted by the designer, the staircase that runs through the four floors is a daily must-pass place. The designer hopes that the owner can once again be amazed by the beauty of the sky above and the magic of light here.





Living Space

Silver Award

A DECADE, A STORY

Company Name:
zhixu interior

Project Designer[s]:
陳君哲、蔡欣芸

Project Location:
Taiwan

Site Area:
1,615 sq. ft.



Light shifts with the seasons, quietly transforming the atmosphere within.

Earth tones and natural textures shape a serene living environment.

Reconfigured layouts welcome mountain views, sunlight, and gentle airflow, allowing time to softly settle into the everyday.

Clear flow and layered compositions of ceilings, walls, and cabinetry lend depth without overwhelming.

As light and wind weave through the space, daily moments are held with quiet care.





Living Space

Bronze Award

GLINT & FRAME

Company Name:

NonFrontier

Project Designer[s]:

王俞哲、李正倫、潘祐鋌

Project Location:

Taiwan

Site Area:

1,420 sq. ft.



In this project, the cross axes are used to integrate the traffic flow, and the configuration of sliding doors and the reshaping of the floor plan are used to resolve the conflict between "Feng Shui" (Chinese geomancy) and functionality. The entryway is covered with dark colors to create a calm atmosphere, and the light and shadow of different materials are used to guide and extend the line of sight. In the public area, a sense of transparency and fluidity is created by borrowing scenery and blurring boundaries, while in the private area, cabinets and sliding doors are used to enhance flexibility and storage functions, and footlights are used to define the space. Through remodeling and the use of light and shadow to release the traffic flow, the space is permeable without losing order, creating a residential space that is both functional and narrative.





Living Space

Distinction

JAPANDI HOME

Company Name:
O Interiors Limited

Project Designer(s):
Hing Cheng, Kilo Pai

Project Location:
Hong Kong (SAR)

Site Area:
1,500 sq. ft.

This residence elegantly embodies Japandi style by merging Japanese wabi-sabi with Scandinavian minimalism. Its open-plan layout centers around a spacious kitchen, perfect for family gatherings and creative cooking.

The dedicated media room features excellent soundproofing, while bedrooms on the upper level maximize privacy and functionality.

A standout staircase wall, finished with eco-friendly, washi paper-like coating,



showcases Japanese craftsmanship and complements the home's muted earth tones and stainless steel kitchen fixtures.

Expansive windows bathe the space in natural light and frame dynamic views of Victoria Harbour, transforming the scenery into living art.

Through thoughtful design and subtle material choices, the home creates a tranquil, minimalist sanctuary that celebrates the beauty of imperfection, simplicity, and a harmonious connection with nature.

Distinction

PERMANENCES

Company Name:
TEN DESIGN

Project Designer(s):
張威

Project Location:
China

Site Area:
2,153 sq. ft.



The north-south axis is used as the boundary between the public and private zones: East is the public zone, with a flexible boundary linking five living scenarios of "looking at each other without disturbing each other", translating the traditional courtyard's interest in viewing and traveling to the space, and responding to the implicit expression of the Chinese people's emotions; West is

the private zone, with the space of solitude separated but not cut off, and with a good degree of openness and closeness, continuing the family encounters in the public zone. The four seasons of light and shadow warm the traces of life, a home that can be lived in forever, witnessing the growth of the young, the strong, the old, and the "permanences" of home flowing in the air.



Living Space

Distinction

KENSINGTON MAISONETTE

Company Name:
IP Interiors Ltd.

Project Location:
United Kingdom

Project Designer[s]:
Carol Ip

Site Area:
1,800 sq. ft.

A 1,800 sq. ft. maisonette in Regency Style Architecture (circa 1830s) in London is transformed into a holiday home.

First floor features a 3.5m ceiling living area with integrated dining area flowing to a private balcony. A Victorian giltwood arched overmantel mirror blends seamlessly with the lilac marble fireplace. The mustard yellow and blue coloured contemporary furniture with the Nepalese silk rug, coupled with antique Chinese furniture integrates East with West. The black and white kitchen cabinetry with neon art on the wall exudes playful energies.

Second floor comprises of a bold turquoise master bedroom and closet room adjoining the contemporary ensuite bathroom. The turquoise-coloured bathroom cabinetry and furnishings contrasts with the black and white geometric floor tiles create added dramatic effect.

Artworks are displayed along the stairwell enroute to third floor. The bedroom and bathrooms feature a cool grey classic elegance.



Distinction

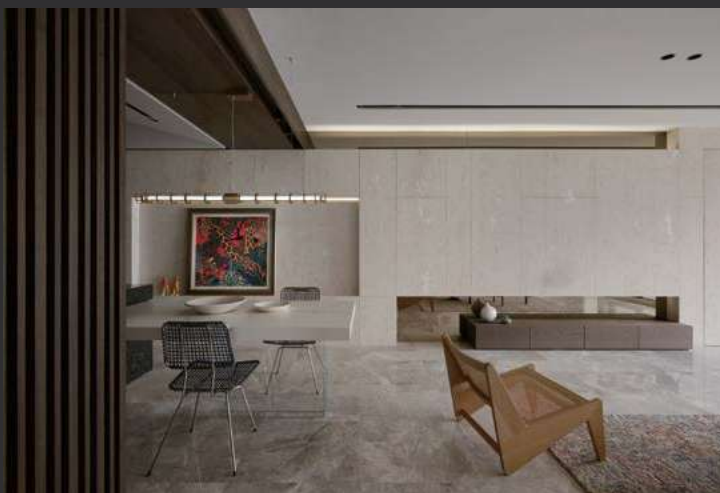
THE GLORIOUS YEARS OF YOUTH

Company Name:
zhixu interior

Project Designer[s]:
陳君哲、蔡欣芸

Project Location:
Taiwan

Site Area:
1,399 sq. ft.



Light filters through metal mesh partition, weaving a gallery-like calm into daily life.

Layered objects align with architectural frames, forming multiple visual effects.

Dark stone pairs with transparent elements to guide sunlight deep into the narrow plan, enriching the spatial rhythm.

Blank walls act as canvas, allowing artworks to shift with changing light—shaping a visual language that flows with time.

The result is a poetic and expressive space where art, light, and life coexist in quiet harmony.



Living Space

Distinction

5 STONE HUMBLE

Company Name:
WUUU STUDIO SDN BHD

Project Designer[s]:
Dom Tee, Lim Yong Le

Project Location:
Malaysia

Site Area:
2,400 sq. ft.



This SS2, Petaling Jaya apartment transforms a typical home into a modern Japanese-inspired retreat for a young couple. The design unfolds through spatial contrasts, from shadowy Zen-inspired foyer with brushed cement walls and an artificial garden, to a bright, sunlit living area. The living room extends to the balcony's edge, while a Torii gate-inspired portal connects the open kitchen and dining space, enhancing visual depth. Layeredness is achieved with an extended counter island and low window benches, recalling the chashitsu tradition.

A restrained palette of travertine, oak, textured cement, and beige linen softens the tropical light, anchored by elements like an oversized paper lamp. In the bedroom, a sunken bed on a tatami platform and granite step creates ceremonial intimacy, with indirect wardrobe and bath access. Throughout, minimalist principles, natural materials, and subtle detailing cultivate a tranquil, contemplative home rooted in Japanese aesthetics yet adapted for urban Malaysian living.



Living Space

Excellence

LAYERS AND CONTINUITY

Company Name:
zhixu interior

Project Designer[s]:
陳君哲、蔡欣芸

Project Location:
Taiwan

Site Area:
1,098 sq. ft.



Drawing from the contours of mountain ranges, a curved ceiling sets the spatial tone.

Vertical movement distinctly defines public and private zones.

A central TV wall grounds the composition, while sliding doors connect bedroom and functions with a layered rhythm.

In response to the owner's art collection, materials are simplified. Intentional blankness and sunlight invite nature and time into the home, shaping a immortal residence.

Excellence

FELICIFIC

Company Name:
Uni-X Associates

Project Designer[s]:
潘天雲、周聰、周嬋、陳淑妍

Project Location:
China

Site Area:
2,034 sq. ft.



The 189 square meters flat floor for a family of three creates a warm and accommodating living shelter with "happiness and care" as the core. Reconstructing the layout, the kitchen is moved outward, and the load-bearing wall, high cabinet and bar form a circular dynamic line, optimizing the lighting and spatial rhythm. The horizontal hall integrates a desk and sofa as the center of parent-child interaction,

flexibly meeting the needs of daily meals and gatherings. The master bedroom uses calm colors and soft materials to create a quiet and delicate private atmosphere. The design creates unlimited living possibilities in the limited space through functional composite and dynamic line reorganization.



Living Space

Excellence

STILLNESS IN SHADE

Company Name:
dgc works

Project Designer(s):
姚品瑜、黃子珊

Project Location:
Taiwan

Site Area:
2,130 sq. ft.



The space is rooted in raw textures and materials, integrating proportions and forms. Through the use of materials and meticulous layout, a juxtaposition of reality and imagination is created, where every detail is narrating a story, exuding a calm, quiet, yet powerful

atmosphere. Stepping into this space, the burnt wood grain and stone textures in every corner showcase the beauty of nature. We hope this space can bring inner peace and firmness, allowing one to settle down and feel the deep power of life.

Excellence

LUMINOUS BOX

Company Name:
NonFrontier

Project Designer(s):
李政倫、王俞哲、潘祐鋋

Project Location:
Taiwan

Site Area:
1,755 sq. ft.



Space is no longer just an inner box, but a continuation of architecture, landscape and environment. With large windows and balconies, the design is centered on "inner and outer co-construction", and the long direction of lighting guides the traffic flow to show the dialogue between space and environment. The longitudinal outer box connects with the inner box, and the ceiling axis and hierarchical

delineation reinforce the order. The horizontal center island is the core of interaction, and the dark frames and materials create a sense of stability. The cabinet integrates display and storage, while the gray mirror, glass and iron outline the contours, showing light and shadow and depth of view.



Small Living Space

Gold Award

HITOTEMA HOME

Company Name:

Hock Hoon

Project Designer[s]:

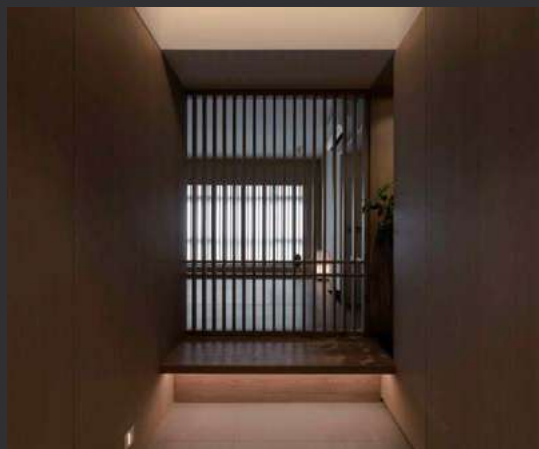
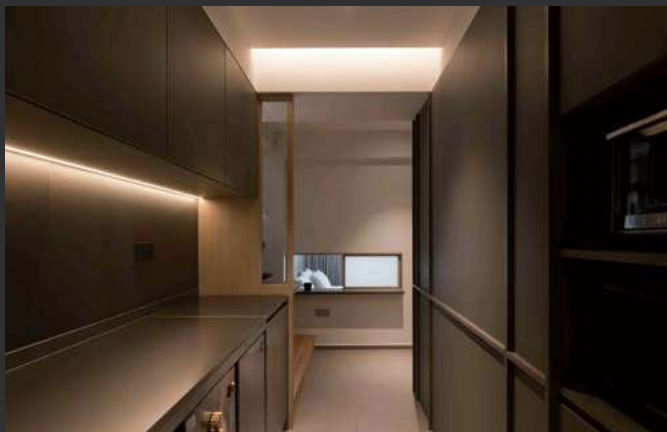
Soh Xin Hui, Ng Ci En, Alvin Tan

Project Location:

Singapore

Site Area:

741 sq. ft.



This project reimagines a compact apartment through the lens of Japanese design and the clients' lifestyle needs—including a commercial kitchen. Two bedrooms were merged to create a multifunctional zone for sleeping, study, and dressing. Steps, platforms, and sliding partitions encourage quiet pauses throughout the space.

Inspired by the Japanese genkan, the foyer features a lattice sliding door that filters light and doubles as a sake cabinet display. A central platform with a table lift transforms the open communal area from lounge to dining, maintaining spatial fluidity.

Natural light is softly diffused via frosted sliding windows along the corridor, illuminating the heart of the home. The study, walk-in wardrobe, and bedroom flow as one connected space, yet offer privacy with sliding doors. A continuous ledge links the study and wardrobe, allowing light to reach the dressing area and reinforcing the home's seamless adaptability.



Small Living Space

Silver Award

THE LIGHT OF BAMBOO KNOWLEDGE

Company Name:
zhixu interior

Project Designer[s]:
陳君哲、蔡欣芸

Project Location:
Taiwan

Site Area:
431 sq. ft.



In the hustle and bustle of life, finding a space that belongs to oneself is what truly defines a home; it's not about the size of the space but about the experience of the journey. In the floor plan layout, we use a single vertical plane to gather and disperse the connections between different parts of the space, ensuring both functional use and fluid movement.

By incorporating sliding doors, we allow the space to transform dynamically, where the door no longer serves just as a functional element for privacy, but also acts as a medium that defines and connects the space, making it larger and more flexible.

In terms of functionality, the TV wall connects to the dining table, enabling the designer to create a simple yet powerful visual element on the facade that extends outward.





Small Living Space

Bronze Award

LOHAS PARK

Company Name:

Yans Design
International Company Limited

Project Designer(s):

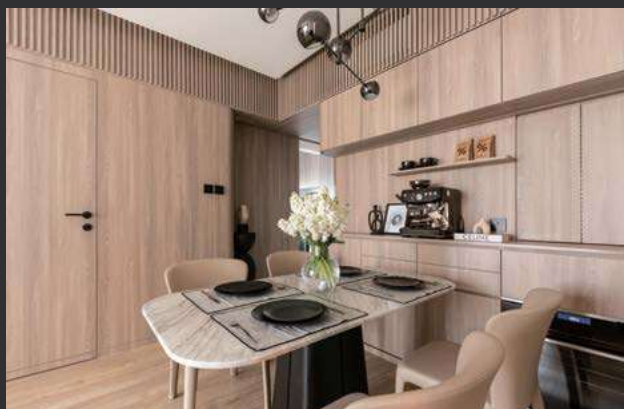
Jane Yan

Project Location:

Hong Kong (SAR)

Site Area:

795 sq. ft.



This design centers on "invisible storage," seamlessly integrating all cabinetry with the walls. Clean, streamlined lines are used to create multifunctional surfaces, with hidden storage spaces incorporated into the TV wall. All corners of the walls are designed with curved edges or curved cabinet doors, maximizing storage efficiency while softening the sense of spatial pressure. The walls and floors are clad in wood panels of the same color tone, complemented by floor-to-ceiling windows that bring in abundant natural light. This not only creates a harmonious interplay between materials and light but also elevates the overall comfort of the space.





Small Living Space

Distinction

BLACK SHADOW

Company Name:
Yi + Partners

Project Designer[s]:
鄭亦翔、鍾雨庭

Project Location:
Taiwan

Site Area:
639 sq. ft.



This work presents a minimalist modern style home space, where the overall color scheme is primarily gray and black. Through the interplay of light and shadow, the space reveals more layers, creating a calm and understated atmosphere. Originally a narrow layout, the design has transformed the space by altering the partition

to achieve the owner's desired open kitchen. The owner emphasized the purity and order in daily life, which is accomplished through the operation of a glass sliding door, allowing for interaction with his wife and children while enjoying the cooking process. This is a significant task accomplished in this design.

Distinction

DECENT & DAINTY – A 300 SQ FT MICRO-APARTMENT

Company Name:
KIRIN PLUS LAB

Project Designer[s]:
Kirin Leung, Koren Sin

Project Location:
Hong Kong (SAR)

Site Area:
310 sq. ft.



Situated in the vibrant city center of Hong Kong, the Decent & Dainty micro-apartment exemplifies sophisticated living within a compact 300 square feet. The space seamlessly integrates a queen-size bed, sofa, study desk, dining table, breakfast bar and a spacious kitchen, all designed for exceptional quality and comfort. A defining feature of the project is the full-height French glass doors connect the living area to an outdoor patio, effectively extending the functional space and fostering a seamless indoor-outdoor connection. The

bedroom area is framed by a wooden portal with a stepped platform. Automatic blinds provide privacy and delineate the resting space from the living area. The television is strategically positioned to offer viewing convenience from both the sofa and the bed. The project blends innovative design and functional elegance, transforming a 300 sq ft space into a luxurious, light-filled sanctuary in the heart of Hong Kong.



Small Living Space

Distinction

FRAMEWORK OF LIVING

Company Name:

Matters

Project Designer[s]:

Penny Huang, Bella Tang

Project Location:

Taiwan

Site Area:

603 sq. ft.



This compact apartment utilizes level changes to define public and private areas, enhancing spatial clarity and function. A corridor wall is transformed into a bar counter that integrates with the dining space, streamlining circulation and maximizing utility. The main wardrobe extends from the master bedroom to the entrance,

transitioning into a display unit that unifies storage with aesthetics. A suspended wall and foldable door create a flexible partition for the multifunctional room, maintaining visual openness while allowing spatial adaptability. The design emphasizes integration, fluidity, and a sense of expansiveness within limited square footage.

Distinction

THE HOME FOR MUTUAL GAZE

Company Name:

MoreIn Design

Project Designer[s]:

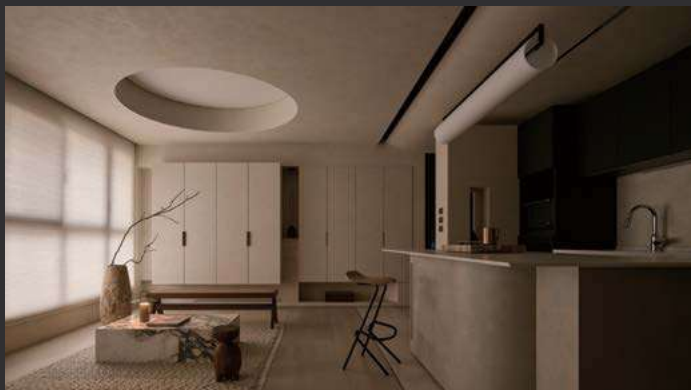
**KAO SHIH-CHIEH,
CHANG AI-CHI**

Project Location:

Taiwan

Site Area:

639 sq. ft.



The design departs from traditional living room and one-bedroom and layouts, a central axis reorganizes the layout with the concepts of a "village"—divided shared and private zones.

A sense of 'mutual gaze' was created through a circulatory flow. The removal of the main wall allows the ceiling to provide subtle hints, while movable furniture and background-integrated cabinets create a flexible, all-directional living space.

The pathway leads to the balcony as the central axis, dividing the space into two major areas: the master bedroom and the living space. The flow from the living area to the master bedroom incorporates an open walk-in closet as a transitional zone between common and private areas. The circulation, sightlines, lighting, and airflow all intertwine and redirect, allowing the two main zones to connect through "mutual gaze," creating a sense of space where no one's back is ever turned.



Small Living Space

Excellence

VIVACIOUS

Company Name:
Deco Farmer Studio

Project Designer(s):
**Heiman Chan, Tim Tsang,
Brian Tsang**

Project Location:
Hong Kong (SAR)

Site Area:
560 sq. ft.



"Vivacious" is a luminous haven enliven by contrasting tones: minimalist white versus bold red and orange. Right from the apartment's entrance, one is soothed by the reflected glow from the silver wallpaper above. It then opens to the pristine living/dining area marked by artful curves on the ceiling: the apartment owners, a couple who have just welcomed the arrival of their baby, would like a living room with ample space for their child to roam freely;

the designers hence employed simple lines and white tone for spaciousness, masterfully rearranged the rooms, using wardrobes to separate the master bedroom and nursery, as well as repositioning the kitchen to expand the living/dining area. In contrast to the pure white oasis are the vibrant orange and red-tinted bathroom and kitchen, the latter being separated by a glass separator with the living area.

Excellence

DAYS OF EASE

Company Name:
Indahouse Design Co., Ltd.

Project Designer(s):
羅士承

Project Location:
Taiwan

Site Area:
392 sq. ft.



This project features a soft beige base, accented with black wood grain and stone textures to create a layered modern aesthetic.

Replacing the traditional TV wall with a projector, the design frees up wall space for visual clarity and functional flexibility. Guided by the "less is more" philosophy, the space is distilled to its essentials, remaining minimal, refined and reflective of a calm urban lifestyle.



Small Living Space

Excellence

WHISPERING FOREST RETREAT

Company Name:
zinc studio

Project Designer(s):
Hui Fung Ng

Project Location:
Hong Kong (SAR)

Site Area:
700 sq. ft.



Surrounded by lush greenery, this Tai Po family home blurs the line between indoors and out, embracing the forest as an extension of living space. Walnut wood panels wrap the interiors like tree bark, adding warmth and texture. Expansive glass walls invite shifting light, rustling leaves, and nature's rhythm into daily life.

The design removes a partition wall and trims the balcony to transform the master bedroom and kitchen into sunrooms with skylights and floor-to-ceiling windows, offering panoramic views. These spaces

flood with natural light by day and become stargazing spots by night.

The open-plan living and dining areas accommodate 10–15 people comfortably. A kitchen island and dining table serve multiple functions—from cooking to dining to casual work.

The children's bedroom is fully clad in walnut wood, creating a cohesive, immersive space where siblings can grow and build memories—a true embodiment of home.

Excellence

GLIMMER HOUSE

Company Name:
MUHO Design Studio

Project Designer(s):
Yu-Fong Chang

Project Location:
Taiwan

Site Area:
785 sq. ft.



"Glimmer House" is a renovation of a 45-year-old apartment located in Taipei's Minsheng Community. Inspired by the surrounding greenery, the project adopts the concept of a "house in the woods." To address the challenge of single-sided lighting, a wooden box study was placed by the window. Clad in solid wood across walls, floor, and ceiling, it evokes a treehouse retreat. Serving as both a reading space and a light conduit, the wooden study becomes the heart of the home, with its glass wall channeling the sole natural light into the entire living area.

Curved forms and furniture enhance both safety and visual softness, gently shaping the space while capturing subtle gradients of light—echoing the dappled shadows of a forest path. A palette of grey, white, and wood, along with curved forms and barrier-free flow, blends aesthetics with function, creating a gentle, nature-infused urban living space.



Small Living Space

Excellence

CHEN RESIDENCE

Company Name:
zhixu interior

Project Designer(s):
陳君哲

Project Location:
Taiwan

Site Area:
646 sq. ft.



Through a delicate aesthetic language, diverse design is seamlessly integrated throughout the space.

As time passes and the years gently settle in, the residence continues to exude a timeless charm. The sunlight diffused illumination amidst the space, gently yet firmly guarding the happiness of the family within.

In the final touches, every detail is meticulously considered, ensuring that every corner of the home reflects a deep understanding of life.

We believe this passion will continue to flow throughout the space, becoming a beautiful chapter that never fades.

Excellence

OASIS MANSION

Company Name:
T.B.C. Studio

Project Designer(s):
TH

Project Location:
Hong Kong (SAR)

Site Area:
657 sq. ft.



"Oasis Mansion" seamlessly blends elements of natural inspiration with interior design, creating a tranquil sanctuary for its inhabitants. The concept draws from the idea of an oasis—where life slows down and every corner nurtures peace and balance. From carefully

curated furnishings to the interplay of light and shadow, every detail is thoughtfully considered to craft a space that is both luxurious and calming. It is a retreat from the noise of the world, helping residents reconnect with themselves, their loved ones, and the beauty of nature.



Work Space

Gold Award

THE HENDERSON WORKSPACE INTERIOR

Company Name:
**Henderson Land
Development Company Limited**

Project Designer(s):
Architect:
Zaha Hadid Architects,
Lighting Designer:
Speirs Major Light Architecture,
Audio Visual Designer:
Ptarmigan Media Ltd.,
Banquet Hall Interior Designer:
Studio Paolo Ferrari

Project Location:
Hong Kong (SAR)

Site Area:
465,001 sq. ft.



Located in the heart of Central, The Henderson redefines workplace interiors by fluidly extending Hong Kong's urban rhythms into an immersive, future-ready environment. Inspired by the Bauhinia bud, its curvilinear lobby welcomes users into a column-free spatial flow—where warm materials, soft contours, and natural light orchestrate a calming arrival. High-performance interiors feature patented innovations including solar-responsive ventilators, liquid desiccant cooling, and sterilized lift pods, creating hospital-grade air quality and user-controlled comfort. Flexible, high-ceiling floorplates support varied workplace models, accommodating hybrid teams, private offices, and dynamic layouts. The interior design prioritizes well-being, ESG participation, and operational efficiency—enhanced by a mobile platform that empowers individual thermal and lighting control. From podium to penthouse, The Henderson delivers a harmonious synthesis of function, beauty, and technology. With 10 Platinum-level certifications including SmartScore and WELL, it exemplifies how design can create a future-proof workspace through elegance, resilience, and human-centered innovations.



Work Space

Silver Award

TOKERU

Company Name:
no.10, NOMURA Co., Ltd.

Project Designer[s]:
Keita Aono, Yosuke Ando,
Jun Watanabe, Miyuu Okada

Project Location:
Japan

Site Area:
2,368 sq. ft.



This space comprises meeting rooms and a waiting area designed for recruitment interviews.

As visitors are likely to feel tense upon arrival, we developed the concept "tokeru"—a Japanese word meaning both "to melt" and "to release tension." The design aims to create an environment where guests can relax and perform at their best.

The meeting room features curved glass panels reminiscent of

melting ice, while the waiting area has rounded furniture, creating a visually soft atmosphere. Although glass walls typically pose acoustic issues, high-performance sound-absorbing ceiling panels ensure a comfortable auditory environment. This creates a meeting room with a soft, inviting ambience, achieved through the combination of glass and lace curtains. Indirect lighting is installed between the glass and the lace curtains. By adjusting the transparency so that silhouettes are visible, but faces are not, the design helps to create an atmosphere that alleviates tension.





Work Space

Bronze Award

XIAMEN SHOPHOUSE COMMUNE

Company Name:
SANJ DESIGN STUDIO

Project Designer[s]:
陳見璜、NG SEAR NEE、
陳建輝

Project Location:
China

Site Area:
3,875 sq. ft.



Design team restored & renovated a conservation shophouse and created a new business combination model of 'working studio + community cafe' to provide a new gathering venue for the local community. The design hopes to participate in urban renewal with the native residents and continue to inherit the cultural development and historical memory of the city.

The design respects the historical features of the original building. New functions are fit into space without obstructing too much original building structure. The exposed structure allows people to more intuitively feel the historical life aspect of the arcade building. Local building materials like granite stone and red brick elements are used in the space, awakening people's emphasis on traditional materials and craftsmanship.

Openings are created in the front and back to promote natural air ventilation provides a comfortable gathering place for local community. Exploring new possibilities for the sustainable development of the old town.





Work Space

Bronze Award

CENTRAL TOWER FAMILY OFFICE

Company Name:
A Work of Substance

Project Designer[s]:
**Maxime Dautresme,
Santa J,
Kevin L, Nick T**

Project Location:
Hong Kong (SAR)

Site Area:
3,714 sq. ft.



Tasked with reimagining a workspace within a constrained floorplan, we transformed limitations into opportunities. Glass brick partitions diffuse natural light into communal areas while ensuring privacy, complemented by fluted glass and stainless steel to amplify luminosity. Circular mid-century motifs soften the space, aligning with the client's aesthetic. A custom timber wall system showcases their art with flexibility, while maintaining curation. Terrariums with native Ficus species introduce greenery and natural air purification. Lighting synchronized with circadian rhythms mirror daylight

transitions for a self-regulating environment. Collaborations with local artists and a botanist root the design in Hong Kong's cultural and ecological context. Custom parquetry and furnishings celebrate regional craftsmanship, while the terrariums symbolise the city's adaptability. A pavilion-like structure balances transparency and seclusion, reflecting Hong Kong's interplay of public and private life. Anchored by the family crest, the space is a living narrative of legacy, well-being, and cultural authenticity—functional yet deeply personal.





Work Space

Distinction

NEW WORLD DEVELOPMENT HQ2

Company Name:
Spatial Concept

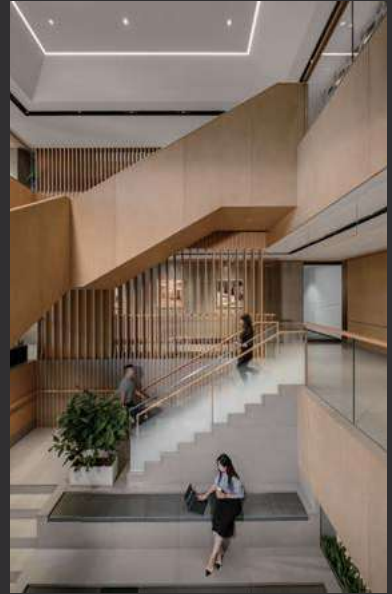
Project Designer[s]:
Gary Lai, Ryo Liu, Somo So, August Lam

Project Location:
Hong Kong (SAR)

Site Area:
80,000 sq. ft.

Spatial Concept infused New World Development HQ2 with the brand's Artisanal Movement, creating an office space that merges art, craftsmanship, and modern functionality. Located in the bustling Kowloon community, the 80,000 sq. ft. headquarters spans four floors, consolidating previously scattered departments. The design is inspired by the traditional Chinese siheyuan, a courtyard house, offering communal spaces that encourage creativity, collaboration, and well-being.

The HQ2's interior reflects a contemporary interpretation of this ancient concept, fostering an environment that strengthens connections between colleagues. At the heart of the design is the central courtyard, present on every floor, which is symbolized most notably in the 10/F reception area. A black granite pool with a central tree enhances a sense of calm and nature, while a granite monolithic reception desk, crafted with rough and polished textures, echoes the craftsmanship central to New World Development's ethos.



Distinction

NAN FUNG WORKPLACE

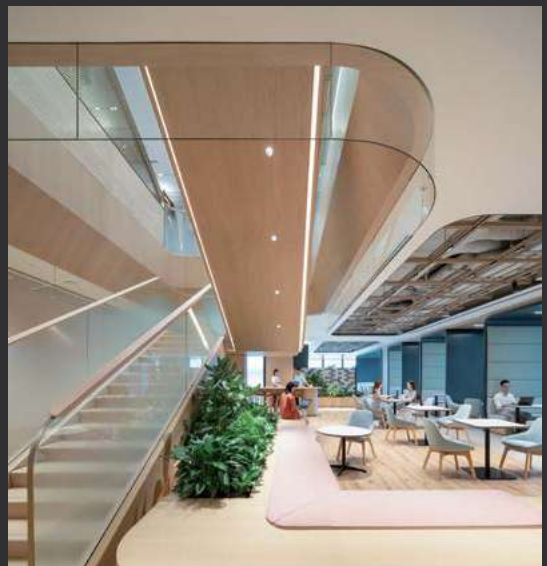
Company Name:
Nan Fung Development Limited

Project Designer[s]:
M Moser Associates, Nan Fung Design Team, Wong & Ouyang (Building Services) Ltd., Arup Advisory Hong Kong Ltd., Lightlinks International Ltd.

Project Location:
Hong Kong (SAR)

Site Area:
64,125 sq. ft.

Nan Fung Workplace is where heritage and innovation converge to shape the office of the future. The space reflects the Group's evolution from its textile roots to its leadership in sustainable construction and property development. Every detail, from recycled materials to real-time energy and water monitoring, expresses a deep commitment to environmental stewardship. Expansive terraces promote green diversity, while communal social hub fosters a healthy, connected culture through flexible layouts support agility and collaboration. Elements from the past and present are woven into the design to honour our roots while looking ahead to the future. Through Workplace's curation at AIRSIDE, the joint sustainability achievements earned ten top-rated green and smart-building certifications.



Serving as a benchmark which positively impacts neighbourhood-scale initiatives, building-level innovations, to people-centric workplaces that inspire both staff and tenants. The space demonstrates a thoughtful integration of environmental responsibility, unique corporate culture, and adaptability to support long-term organizational goals.



Work Space

Excellence

ONE BEDFORD PLACE

Company Name:
via.

Project Location:
Hong Kong (SAR)

Project Designer(s):
via.

Site Area:
144,000 sq. ft.

One Bedford Place is a Grade-A commercial hub that merges creativity with cultural heritage. Its arrival lobby features a sculptural reception counter, wood-slatted walls, and a ceiling blending nickel silver with stone. The lift echoes industrial gates, while a gold-veined black marble spiral staircase with wooden handrails anchors the lobby.

Behind it, the cafe's bamboo-scaffold-inspired cropper ceiling adds cultural flair. Digital wayfinding further caters to tech-savvy visitors. The 3/F sky garden offers city views with curved seating under a baffle ceiling, reflecting Hong Kong's communal vibe.

The 5/F Club mixes cha chaan teng energy with modern comfort. Leather booths, antique mailboxes salvaged from the old Bedford neighborhood, accustom-made mahjong conference table, and mosaic carpets evoke local nostalgia. The gym features hand-woven basket lighting and retro green mesh walls. The rooftop terrace, with recessed seating, is perfect for al fresco dining, mirroring the city's bustling street life.



Excellence

TSD STUDIO

Company Name:
Touchstone Interior Design

Project Designer(s):
TSD group

Project Location:
China

Site Area:
4,306 sq. ft.

TSD Studio aims to integrate demanding work with leisurely living by redefining the relationships between functional office spaces and breaking away from structural rigidity. The key design challenge lies in achieving a seamless integration of heritage and innovation while preserving the original architectural framework. This approach allows the workspace to coexist harmoniously with the community and nature, thereby blurring the boundaries between professional duties and social engagement.

Our introduction of nature and verdant elements into the office environment embodies our reverence and passion for life. Light transforms intangible interplay of shadows into perceptible experiences, dissolving spatial boundaries into ambiguity.





Work Space

Excellence

MOD WORKSHOP

Company Name:
Ministry of Design Pte. Ltd.

Project Designer[s]:
Colin Seah

Project Location:
Singapore

Site Area:
1,001 sq. ft.



MOD Workshop: Redefining Collaborative Design

Embracing post-pandemic innovation, our new Singapore studio redefines the physical workplace. We've dedicated 60% of its layout to face-to-face collaboration, ensuring in-person meetings are truly impactful.

The Workshop features layered 3D metal scaffolding, creating seamless zones and visibly housing our extensive material library. At its heart is a central, counter-high frosted tempered glass "war room" table, perfect for material explorations and design discussions. A

custom adjustable lighting system above allows for light simulations when reviewing samples, alongside a magnetic display wall.

Frosted polycarbonate and fluted glass screens enhance spatial continuity, providing intelligent utility for storage and display. Our designers love the soaring, light-bathed, white essence, finding it both inviting and stimulating. Clients also appreciate the highly interactive presentations, enjoying how they can review designs under various light settings and swap out materials on the spot, fostering a truly engaging and collaborative process.

Excellence

TERMINAL.0 HANEDA

Company Name:
TANSEISHA Co., Ltd.

Project Designer[s]:
Kazuki NOMURA,
Rui SANO (TANSEISHA Co., Ltd.)

Project Location:
Japan

Site Area:
17,275 sq. ft.



terminal.0 Haneda is an R&D hub that works to solve issues facing Haneda Airport, and collaborates with other industries to explore the potential of terminal functions in an era when the concept of transportation changes.

The inside of the facility has a demonstration field that recreates an environment close to what is in an actual airport, allowing solutions to various issues to be tried here.

The unfinished interior has been stripped down to the bare essentials with all excess eliminated, and was designed with the spatial concept of an atelier, instead of an office or lab, to demonstrate the intention of all project participants to build the airport of the future from scratch.

We will expand the results we have created from scratch at terminal.0 to each terminal of Haneda and airports in Japan and around the world.



Work Space

Excellence

COMMON ZHANG

Company Name:

One Fine Day Studio & Partners

Project Designer[s]:

設計總監：李俊鵬

設計團隊：張威利、方如林、劉廣威、
萬浩、黃得倫、吳澤安

Project Location:

China

Site Area:

11,980 sq. ft.

Nestled within a creative park, COMMON ZHANG has undergone a remarkable transformation from a conventional office setting to a multifunctional hybrid space combining a showroom and workspace. This standalone building, with its understated “box-like” form, seamlessly blends into its diverse design surroundings, offering the brand an independent yet open venue for creativity and functionality.





Student

Gold Award

MUDDY STREAM

Project Designer and Institution:
Kwong Kai Nam Ivan
(Hong Kong Design Institute)

Project Location:
Hong Kong (SAR)

Site Area:
21,528 sq. ft.



People's desire for nature reflects a pursuit of happiness. However, urban living often disconnects us from the natural world, leading to unexpressed emotions and anxieties. This lack of connection has led many to face emotional issues, making it crucial to find a tranquil space for reflection and resolution.

The Water Counseling Center addresses this need, offering a space for self-reflection. In the serene environment of the Water Curtain Cave, people can observe their reflections, feel the cleansing flow of water, and absorb its energy, quickly entering a state of inner peace. This process serves not only as a spiritual renewal but also as a vital means of self-repair, helping individuals regain balance and rekindle their passion for life.



Silver Award

URBAN CANOPY RETREAT

Project Designer and Institution:
Gao Zixiang
(Hong Kong College of Technology)

Project Location:
Hong Kong (SAR)

Site Area:
2,300 sq. ft.



The design concept is derived from the unique iron gates in Hong Kong and the wave-shaped iron plates of public housing buildings. It also incorporates the regularity of the Tung Choi Street being open in the morning and closing in the evening. The disassembly and installation are flexible and can be placed and removed according

to the requirements of the road and time. The geometric, tree-like structures create an intriguing visual appeal. They seem to blend functionality with artistry, offering shade while also serving as an eye-catching urban feature. It gives off a modern and innovative vibe, making it an inviting spot for people to relax and socialize.





Student

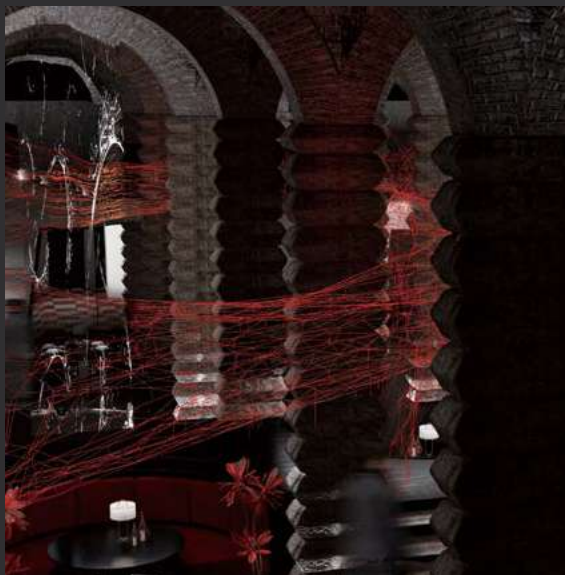
Bronze Award

THREAD - EX-SHAM SHUI PO SERVICE RESERVOIR

Project Designer and Institution:
Faith Luk
(Hong Kong Design Institute)

Project Location:
Hong Kong (SAR)

Site Area:
20,000 sq. ft.



The design transforms Sham Shui Po's century-old underground reservoir into a restaurant that reconnects people with Hong Kong's history. Rope and net, represents the flow of time, linking past and present. I used the red threads as the concept of my design, this design connecting the stone pillars with a red net gives new life to the space.

The site is a Grade 1 historical monument, and no existing artifacts could be damaged. I employed a plug-in design approach to create three distinct spaces. Elevated floors offer new perspectives. Bridges connecting the floors allow people to traverse the space. A slightly elevated dining platform provides an observation deck for the basement level while retaining space to integrate into the dining area. This project truly transforms the site into a functional destination, inviting repeat visitors and connecting them to Hong Kong's history.





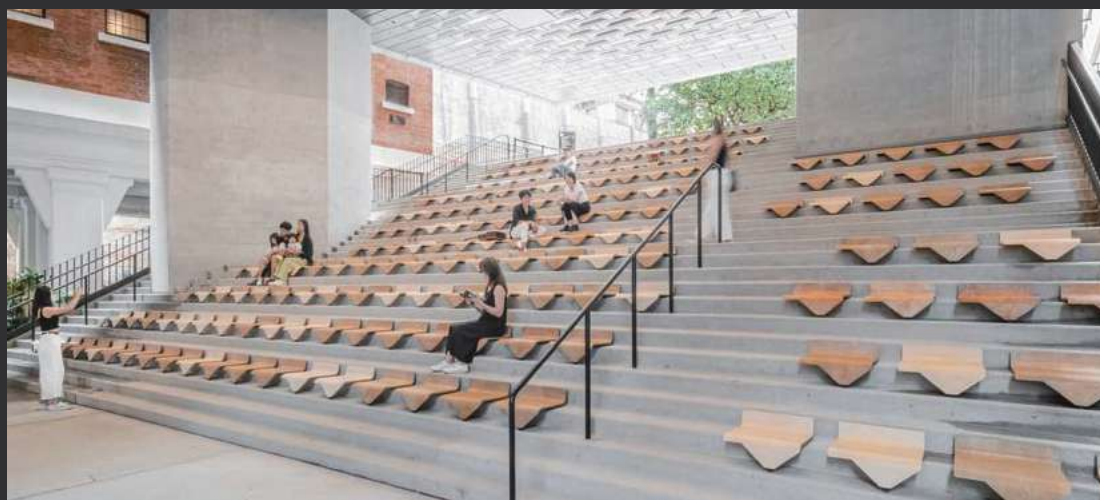
Emerging Design Firm

Winner

ARTA ARCHITECTS

Founder:
Arnold Yok Fai Wong,
Tat Lai Wong

Company Location:
Hong Kong (SAR)



ARTA, merging ART + ARCHITECTURE, explores artistic concepts while challenging notions of architecture. Since 2021, we've created more than 30 transformative public spaces in Hong Kong that foster creative community engagement.

The interior design of "Aberdeen Boat Club" employed nautical themes, preservation of heritage elements, and vibrant accent colours, while our hotel interior design for Vega Suites references the vibrant colours and textured patterns of TKO. Our award-winning "Tai Kwun Chairs" (FRAME Awards 2024) and Milan Design Week's "Clover Collective" furniture showcase our diversity in different design disciplines.

Sustainability drives our innovation, using recycled materials and collaborating with NGOs to create inclusive, eco-conscious spaces – as demonstrated by "Recycled Glass Butterflies" project.

Recognized by Dezeen Awards, iF Design Award, and HKIA, with Venice Architecture Biennale exhibitions, we're expanding into hospitality, residential, and landmark projects such as the HK Maritime Anchor Plaza and sea view villas.





**Congratulations to
all winners**

Thanks to our Sponsors

HKIDA would like to take this opportunity to acknowledge the generosity of the sponsors in this Awards programme. We believe that these types of professional alliances are imperative to the mutual benefit of the design industry and we are pleased to be working with a number of return sponsors again this year, as well as welcoming new partners. As a non profit organization the HKIDA could not success without the support of both its members and corporate sponsors.

Platinum Sponsor



Bronze Sponsor



Best Brands



Strategic Media Partner



Media Partners



Supporting Organizations



Orientop Limited

Global's Preeminent Manufacturer of Architectural Decorative Glass:
DESIGN, SUPPLY AND INSTALLATION



Hong Kong International Airport



Leading the decorative architectural glass industry from 1995, Orientop remains keenly attuned to the pulse of changing industry trends. Always desperate to collect the latest materials with the best quality to satisfy customers' needs.

Not only pursuing and developing extraordinary and innovative glass technology, but also aim for unique masterpiece of glassworks for various customer groups.

Providing advanced glass solution, from conception, design, production as well as installation, Orientop aims at attaining the best quality of product and service in each and every part, creating a unique and unrivalled masterpiece for the customers.



**ORIENTOP
LIMITED**



The Henderson

PROFESSIONAL INSTALLATION TEAM

Our team is highly skilled and equipped to handle technically challenging structures with professionalism and efficiency. With extensive experience in mega projects — such as Hong Kong International Airport, MTRC and AIA building projects, we specialize in the installation of high-difficulty glass, including curved glass, ensuring precise measurements and expert installation. Orientop is committed to providing the best services to our clients, and

we prioritize safety for both our projects and workers. By offering tailor-made solutions, we ensure a smooth and quick process for each project, earning the trust and accolades of our customers.



UNIQUE GLASS DESIGN

Glass can be created with multiple patterns and textures, and our in-house design team is meticulous when managing designs and colors to create decorative glass. Keenly attuned to the pulse of changing industry trends, our designer ensures exceptional results, translates diverse concepts in stunning glass artistry, offering versatile solutions for commercial ,hotel & residential projects, adding vitality and sophistication to any space and every project.



Ru - Nina Hotel Tsuen Wan West

*The Origin
The Orientop*

Hong Kong +852 2796 8868
PRC +86 147 1503 2598
www.glasslam-asia.com

Block A, 2/F,
Unify Commercial Industrial Building,
31 Tai Yip Street, Kowloon Bay,
Kowloon, Hong Kong

   orientoplimited

 orientop_limited

  OrientopLtd

 OrientopLtd东翘玻璃

GLAZING
SPECIALIST

BE SUSTAINABLE FOR A GREENER FUTURE

NRG SYSTEM



NON-INTRUSIVE RETROFIT VACUUM GLASS GLAZING SYSTEM

NRG System is an upgrade solution for existing buildings including hotels, commercial properties, and heritage structures as well as new developments, helping them meet the latest environmental standards.

By retrofitting windows, curtain walls, or facades, our secondary glazing system offers a practical, efficient, and fully independent way to upgrade glazing, delivering significant environmental benefits.



Noise Reduction

Act as a barrier to external noise, creating a quieter indoor environment.



Thermal Comfort

Provide consistent indoor temperatures and improved comfort.



Condensation Control

Help prevent condensation issues, reducing mold and dampness.



Energy Efficiency

Reduce heat loss or Heating from the Sun, improving energy efficiency and lowering heating and cooling costs.



Cost-Effective

A more affordable option than window replacement.



Quick and Non-intrusive Installation

Install easily without major construction work.



HIGH-PERFORMANCE MICROFIBRE CLEANING CLOTH



✓ EXCELLENT CLEANING PERFORMANCE

The wedge-shaped cross-section with sharp edges allows the microfibre to maximize its cleaning power.

✓ eco MATERIAL

Microfibres made from polyester, nylon, and recycled materials. Due to the special structure of the fibres, the cleaning effect is excellent.

**NO ALKALI
TREATMENT REQUIRED**
During Manufacturing



APPLICATION



AUTOMOTIVE



DISPLAY



EYEWEAR



GLASS



JEWELLERY

CONTACT US

+852 3977 4298

orientop-bm.com

可丽华南西南经销商明汇

orientop.bm

OrientopBM

+852 5196 6258

jm_minghui

明汇(可丽华南西南经销商)

orientop_bm

Orientop-BM

CONNECT CREATE
链·新



广州·琶洲
GUANGZHOU

民用家具展
Home Furniture
2026.03.18-21

办公商用展&设备配料展
Office and Commercial Space
CIFM/interzum guangzhou
2026.03.28-31

第57届中国（广州）国际家具博览会
THE 57th
CHINA INTERNATIONAL
FURNITURE FAIR(GUANGZHOU)





巧筑定制 ARTISAN *Arch*



artisanarch.online

A New Era of SieMatic, Inspired by Legacy.

SieMatic

HONG KONG & MACAU

Exclusive Distributor

Kowloon Extreme

Lifestyle Limited

(852) 2329-8218

siematic@kextremegroup.com

2/F, 208 Johnston Road, Wanchai

SMART WALL SOLUTION

*Green Solutions for
Your Project*



KINLAND®
SMART WALL SOLUTION

健林牆紙 · 布藝 · 門櫃

T: +852 2818 6406 F: +852 2806 0489 E-mail: master@kinlandwall.com
1/F., 127-131 Lockhart Road, Wanchai, HONG KONG
www.kinlandwall.com

APIDA 2025 Award List

Category	Company	Website	Page
----------	---------	---------	------

Judge's Choice

Judge's Choice /by Johnny Fu			
Work Space	CCD/Cheng Chung Design (HK) Limited	www.ccd.com.hk	14
Judge's Choice /by Simon Hamilton			
Student Design	Kwong Kai Nam Ivan (Hong Kong Design Institute)	www.youtube.com/watch?v=N1SZOX_1cEg	14
Judge's Choice /by Iris Hoi			
Retail Space	Matrix Design	www.matrixdesign.com	15
Judge's Choice /by Prof. Charles O. Job			
Institutional Space	Neri&Hu Design and Research Office	www.neriandhu.com	15
Judge's Choice /by Alistair Leung			
Small Living Space	zhixu interior	www.zhi-xu.com	16
Judge's Choice /by Andrea Ponti			
Work Space	no.10, NOMURA Co., Ltd.	www.no-10.jp	16
Judge's Choice /by Chung-Yi Yang			
Hotel Space	CCD/Cheng Chung Design (HK) Limited	www.ccd.com.hk	17
Judge's Choice /by Rebecca Yazbek			
Food Space	Scope Design	www.pinjiesj.com	17

Food Space

Gold	Scope Design	www.pinjiesj.com	18
Silver	JG PHOENIX	www.jingfh.com	19
Bronze	Matrix Design	www.matrixdesign.com	20
Distinction	HBM	-	21
Distinction	Guo Xin Space Design Studio (Xi'an) Co., Ltd.	-	21
Excellence	HK Timberbank / Atelier E	www.hktimberbank.shop	22
Excellence	瀋陽同聲和空間裝飾工程有限公司	-	22
Excellence	Republic Metropolis Architecture (RMA)	-	23
Excellence	A.N.D., NOMURA Co., Ltd.	www.and-design.jp	23
Excellence	Dayi Design	www.dae-dae.com	24

Installation & Exhibition Space

Gold	TANSEISHA Co., Ltd.	www.tanseisha.co.jp/en	25
Silver	OCHIAI Yoichi, NOMURA Co., Ltd., WOW inc., Asratec Corp., NOIZ Co., Ltd.	www.nomurakougei.co.jp/en	26
Bronze	Shenzhen Das Design Co., Ltd.	www.dasdesign.cn/	27
Distinction	Matrix Design	www.matrixdesign.com	28
Distinction	Shandong University of Art&Design	-	28
Distinction	NOMURA Co., Ltd.	www.nomurakougei.co.jp/en	29
Distinction	METROPOLITAN DESIGN; YANG & ASSOCIATES GROUP	www.yanghd.com	29
Distinction	Matrix Design	www.matrixdesign.com	30
Distinction	Studio IDM	www.matrixdesign.com	30
Excellence	Matrix Design	www.matrixdesign.com	31
Excellence	Habitus Design Pte. Ltd.	www.habitusdesigngroup.com	31
Excellence	Architecture Commons Ltd. x PolyU Campus Development Office x Kingsmen HK Ltd.	acommons.com/en	32
Excellence	Epic Design Co., Ltd. - Guangzhou	www.epicdesign.cn	32

Leisure & Entertainment Space

Gold	Neri&Hu Design and Research Office	www.neriandhu.com	33
Silver	Jiangsu Vocational College of Agriculture and Forestry	www.jsafc.edu.cn	34
Bronze	C&C DESIGN CO., LTD.	www.cocopro.cn	35
Distinction	J. Candice Interior Architects	www.jcandice.com	36
Distinction	CYZS INTERIORS	www.instagram.com/cyzs_interiors	36
Distinction	METROPOLITAN DESIGN; YANG & ASSOCIATES GROUP	www.yanghd.com	37
Distinction	Wooton Designers	www.instagram.com/wootondesigners	37
Distinction	Matrix Design	www.matrixdesign.com	38
Excellence	ARTA Architects	arta.archi	39
Excellence	SAS PLANNERS	www.sasplanners.com	39
Excellence	ARCHI HIVES	www.archihives.co.in	40

APIDA 2025 Award List

Category	Company	Website	Page
Institutional Space			
Gold	Neri&Hu Design and Research Office	www.neriandhu.com	41
Silver	Karv One Design	www.karvone.com	42
Bronze	Ju He Digital Creative	www.szjhjd.com	43
Distinction	A Gleam Interior Limited	www.agleaminterior.com	44
Distinction	KTX archiLAB	ktx.space	44
Distinction	BETHEL DESIGN	www.facebook.com/profile.php?id=100090123471278	45
Distinction	Lab Two Design	www.labtwodesign.com	45
Excellence	KODcrew	-	46
Excellence	Adrian Chan Design and Research Office	www.adroffice.com	46
Excellence	MR STUDIO Co., Ltd.	www.mrstudio.biz	47
Excellence	AR-kee Design Studio Pte. Ltd.	arkeedesignstudio.com	47
Shopping Space			
Gold	ARIZON	www.arizon.com.cn	48
Silver	Lead8	www.lead8.com	49
Bronze	Lead8	www.lead8.com	50
Distinction	Oft Interiors Ltd.	www.oftinteriors.com	51
Distinction	CAN Design	www.can.hk	51
Distinction	ARK Associates Limited	ark.com.hk/en	52
Excellence	Nan Fung Development Limited	www.nanfung.com	53
Excellence	Wuxi & Shenzhen Wuxi Design Consultant Co., Ltd.	www.wxideag.com	53
Retail Space			
Gold	Panorama Design Group	panoramahk.com	54
Silver	Matrix Design	www.matrixdesign.com	55
Bronze	TRE Gazze	tregazze.com	56
Distinction	A Work of Substance	www.aworkofsubstance.com	57
Distinction	SAMURAI	kashiwasato.com	57
Distinction	REIICHI IKEDA DESIGN	reiichiikeda.com	58
Distinction	Linkus Concept Studio Limited	-	58
Excellence	Once Design Studio Limited	www.once-hk.com	59
Excellence	Matrix Design	www.matrixdesign.com	59
Excellence	Shenzhen Rongor Design & Consultant Co., Ltd.	www.rongor.com	60
Excellence	QIANG DESIGN	www.qiangid.com	60
Excellence	HBM	-	61
Excellence	Linehouse	www.linehousedesign.com	61
Hotel Space			
Gold	Ministry of Design Pte. Ltd.	modonline.com	62
Silver	CCD/Cheng Chung Design (HK) Limited	www.ccd.com.hk	63
Bronze	FIELD FOUR DESIGN OFFICE	www.field4.co.jp/staff/t-okubo.html	64
Distinction	Hangzhou Great Scale Architectural Design Co., Ltd.	www.gs-design.cn	65
Distinction	Blu Water Studio	www.bluwaterstudio.com	65
Distinction	IN-Xian Design	www.inxian-design.com	66
Distinction	GEOSUM Design	-	66
Distinction	Neri&Hu Design and Research Office	www.neriandhu.com	67
Excellence	Blu Water Studio	www.bluwaterstudio.com	68
Excellence	NIKKEN SEKKEI LTD.	www.nikken.co.jp/ja	68
Excellence	NIKKEN SEKKEI LTD.	www.nikken.co.jp/en	69
Excellence	A.N.D. + FOO, NOMURA Co., Ltd.	www.and-design.jp	69
Sample Space			
Gold	C&C DESIGN CO., LTD.	www.cocopro.cn	70
Silver	SUOFEIYA HOME COLLECTION CO., LTD.	global.suofeiya.com	71
Bronze	ARK Associates Limited	ark.com.hk/en	72
Distinction	LSD Interior Design	www.lsdcasa.com/company	73
Excellence	Epic Design Co., Ltd. - Guangzhou	www.epicdesign.cn	74
Excellence	HODDI design	www.idhoddi.com	74
Excellence	SUOFEIYA HOME COLLECTION CO., LTD.	global.suofeiya.com	75

APIDA 2025 Award List

Category	Company	Website	Page
----------	---------	---------	------

Living Space

Gold	Tanliyu Studio	-	76
Silver	zhixu interior	www.zhi-xu.com	77
Bronze	NonFrontier	www.nonfrontier.com	78
Distinction	O Interiors Limited	www.ointeriorshk.com	79
Distinction	TEN DESIGN	www.tendesign.cc	79
Distinction	IP Interiors Ltd.	www.ipinteriors.com	80
Distinction	zhixu interior	www.zhi-xu.com	80
Distinction	WUUU STUDIO SDN BHD	wuuustudio.com	81
Excellence	zhixu interior	www.zhi-xu.com	82
Excellence	Uni-X Associates	-	82
Excellence	dgc works	dgcworks.com	83
Excellence	NonFrontier	www.nonfrontier.com	83

Small Living Space

Gold	Hock Hoon	www.hockhoon.com	84
Silver	zhixu interior	www.zhi-xu.com	85
Bronze	Yans Design International Company Limited	-	86
Distinction	Yi + Partners	yipartners1992.com	87
Distinction	KIRIN PLUS LAB	www.kirinpluslab.com	87
Distinction	Matters	www.matters.com.tw	88
Distinction	MoreIn Design	www.more-in.tw	88
Excellence	Deco Farmer Studio	www.decofarmerstudio.com	89
Excellence	Indahouse Design Co., Ltd.	www.indahousedesign.com	89
Excellence	zinc studio	zincstudio.co	90
Excellence	MUHO Design Studio	www.facebook.com/muhodesignstudio	90
Excellence	zhixu interior	www.zhi-xu.com	91
Excellence	T.B.C. Studio	www.tbc.com.hk	91

Work Space

Gold	Henderson Land Development Company Limited	www.hld.com/en	92
Silver	no.10, NOMURA Co., Ltd.	www.no-10.jp	93
Bronze	SANJ DESIGN STUDIO	www.sanjdesign.com	94
Bronze	A Work of Substance	www.aworkofsubstance.com/en	95
Distinction	Spatial Concept	www.spatialconcepthk.com	96
Distinction	Nan Fung Development Limited	www.nanfung.com	96
Excellence	via.	via-arc.com	97
Excellence	Touchstone Interior Design	-	97
Excellence	Ministry of Design Pte. Ltd.	modonline.com	98
Excellence	TANSEISHA Co., Ltd.	www.tanseisha.co.jp/en	98
Excellence	One Fine Day Studio & Partners	www.ofdsp.com	99

Student Design

Gold	Kwong Kai Nam Ivan (Hong Kong Design Institute)	youtu.be/N1SZOX_1cEg	100
Silver	Gao Zixiang (Hong Kong College of Technology)	-	101
Bronze	Faith Luk (Hong Kong Design Institute)	faithysluk.wixsite.com/my-site	102

Emerging Design Firm

Winner	ARTA Architects	arta.archi	103
--------	-----------------	------------	-----

Best Brand

Bespoke Furnishings	Artisan Arch	www.artisanarch.online	110
Decorative Architectural Glass	Orientop Limited	www.glasslam-asia.com	106
Kitchens	SieMatic Hong Kong & Macau	www.siematic.com	111
Wall Coverings	KINLAND Smart Wall Solution	kinlandwall.com	112

HKIDA Executive Committee 2025



Louisa YOUNG
Chairman



CM JAO
Vice-chairman



Tik CHAN
Vice-chairman



Peter WONG
General Secretary
Treasurer



Karr YIP
Executive Committee Member
Chairman of
APIDA Organizing Committee



Tris KEE
Executive Committee Member



Po Po LEUNG
Executive Committee Member



Ken CHEUNG
Executive Committee Member



Vincent ZHANG
Executive Committee Member



Penny CHAN
Executive Committee Member



Kylie CHOW
Executive Committee Member

HKIDA Advisor 2025



Alex HO
Legal Advisor
Principal Solicitor of AH Lawyers



C.S. HO
Advisor
CEO of BEAM Society Limited

APIDA Organizing Committee

Chairman / Karr YIP

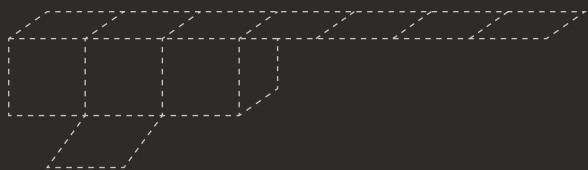
Project Coordinators / Yan LEE / Cherry YEUNG / Yuki TONG

Hong Kong Interior Design Association

T / (852) 2866-2039 F / (852) 2866-3261

E / info@apida.hk W / www.apida.hk | www.hkida.org

A / Unit 1505, 15/F, One Midtown, 11 Hoi Shing Road, Tsuen Wan, N.T., Hong Kong



APIOA

33rd ASIA PACIFIC
INTERIOR DESIGN
AWARDS 2025

第三十三屆亞太區室內設計大獎
二零二五年

