

St John's Hill

A new benchmark for quality housing and placemaking

Client: Mount Anvil
Location: Clapham, Wandsworth
Sector: Urban development

SERVICES

PROJECT MANAGEMENT

PEER REVIEW

DESIGN OPTIMISATION



"I worked with Tim when he was Mount Anvil's Head of Design on Burridge Gardens (St John's Hill) in London, which was a joint venture development between Mount Anvil and Peabody. In his position Tim carefully guided the design team to meet the development requirements of these two organisations. Balancing the cost plan whilst delivering a scheme with great residential and retail architecture."

IAIN COCHRAN

Former Partner at Hawkins\Brown

In the centre of Clapham, this estate regeneration site set a new benchmark for quality housing and placemaking, with earlier phases already under delivery.

APPROACH

The final phase, comprising predominantly market-sale housing, had been designed several years earlier and was ready for a fresh review. Our scheme audit identified several opportunities to add value and improve the scheme, including rebalancing the housing mix to better align with current market demand. We also explored options to increase housing provision by adjusting building heights and massing.

Using VuCity, we tested design options and collaborated closely with townscape and heritage consultants Montague Evans to ensure the proposals were robust and justifiable through the planning process. These revisions delivered additional benefits, such as enhanced public realm and improved amenity spaces.

OUTCOME

Working alongside the wider professional team within an ambitious planning programme, planning permission was secured at the final committee meeting before local elections and a change in political leadership.

Transformation in numbers

207

TOTAL HOMES

59

ADDED HOMES

+27%

ADDED VALUE

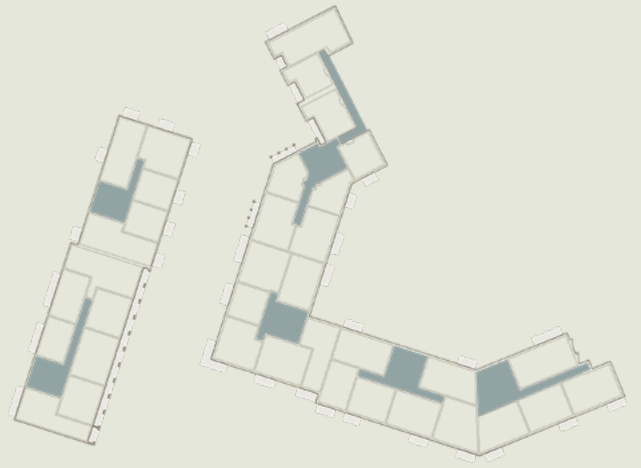
Ground floor

BEFORE



First floor

BEFORE



AFTER



AFTER

