



OMC

Operación Mahou-Calderón park I Madrid, Spain

2018-2024



# OMC

**OPERACIÓN  
MAHOU-CALDERÓN  
PARK IN MADRID RÍO  
MADRID, SPAIN**



<b>Situation</b>	Madrid, Spain
<b>Client</b>	Junta de Compensación APE 02.27 "NUEVO MAHOU-CALDERÓN"
<b>Tipology</b>	Public space
<b>Size</b>	67.360 m2
<b>Architects</b>	Francisco Burgos Ruiz (23/05/1959). Colegiado COAM 7816 Ginés Garrido Colmenero (31/07/1962). Colegiado COAM 9103 Fernando Porras-Isla
<b>Designers</b>	MRIO Arquitectos Asociados S.L.P.
<b>Architecture team</b>	Sandra Varela, Oscar Ruíz, Carolina Matos, Jonás Prieto, Jaime Silva
<b>Engineering</b>	Bernabeu Ingenieros
<b>Engineering team</b>	Jorge Bernabeu, Alejandro Bernabeu
<b>Project Management</b>	IGB Ingenieros
<b>Main constructor</b>	FCC+TAGA
<b>Consultants</b>	Show me the project – Infographics
<b>Date</b>	2018-2024







Situation  
Madrid Río  
ns

## Descriptive text

The park is built, for the most part, on a section of Madrid's M30 motorway, and on the space occupied by the Atlético de Madrid football stadium, which was demolished in 2020. The park has two very different spaces that are articulated on the 'artificial hill' that forms the motorway tunnel. The fragment located above the tunnel is linked to the pine forest that runs along Madrid Río from north to south; and its lower part celebrates the memory of the Atlético de Madrid playing field where spectators and players shared their

hobby since 1966. The inauguration of the Atlético de Madrid park is the definitive culmination of the Madrid Río project, started in 2005, twenty years ago, which now, finally, has full continuity. The project includes some major urban facilities, such as a large 240 m<sup>3</sup> reclaimed water tank; and the urban design of the technical facilities of the motorway tunnel. The park extends gently over the land of the urban development of the 'Mahou Calderón' operation and articulates its public and green spaces with the Madrid Río park.









MADRID, SPAIN





I.  
Floor Plan.  
General Plan.



II.  
Floor Plan.  
Previous (demolished).

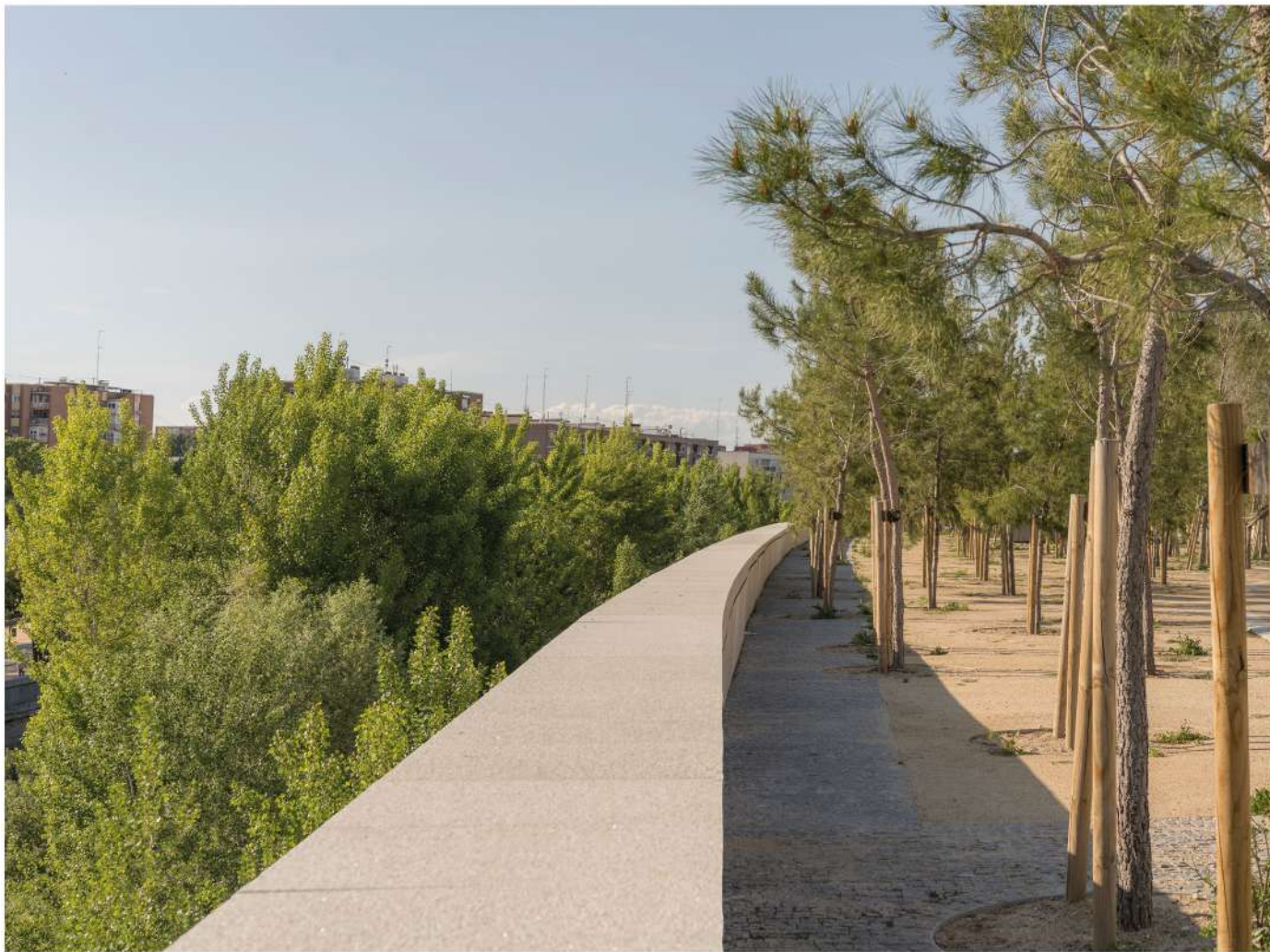






MADRID, SPAIN

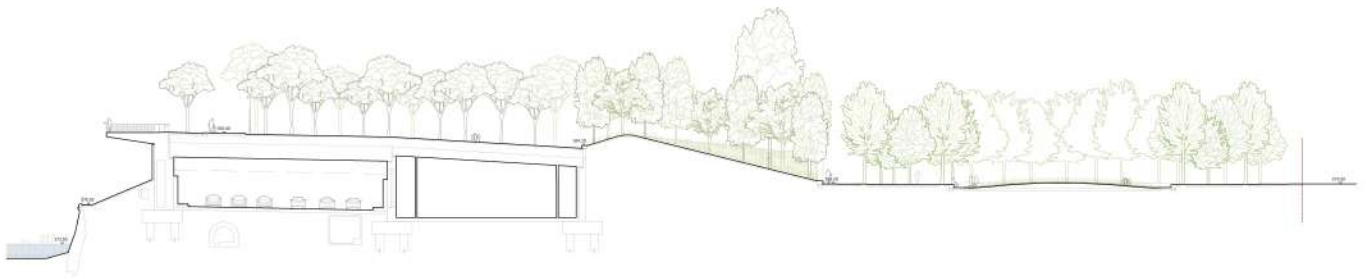








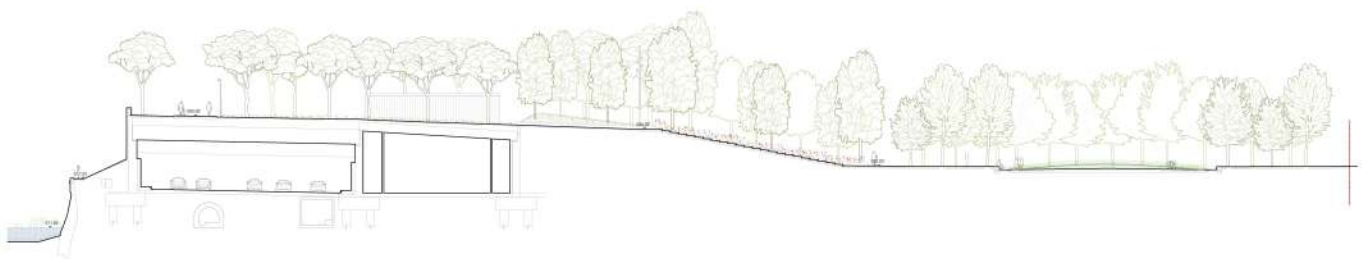








MADRID, SPAIN











MADRID, SPAIN



To obtain high definition photographs  
and technical documents,

please contact:

[pr@burgos-garrido.com](mailto:pr@burgos-garrido.com)

917 489 327

**OMC**

Operación Mahou-Calderón park I Madrid, Spain

2018-2024