



Y-MRIO

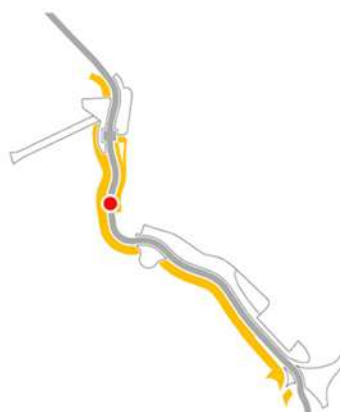
“Y” BRIDGE MANZANARES RIVER PARK
2010

Y-MRIO

**“Y” BRIDGE, MANZANARES
RIVER PARK
MADRID, SPAIN**

RESTORATION OF “PARQUE DE LA EXPOSICIÓN”

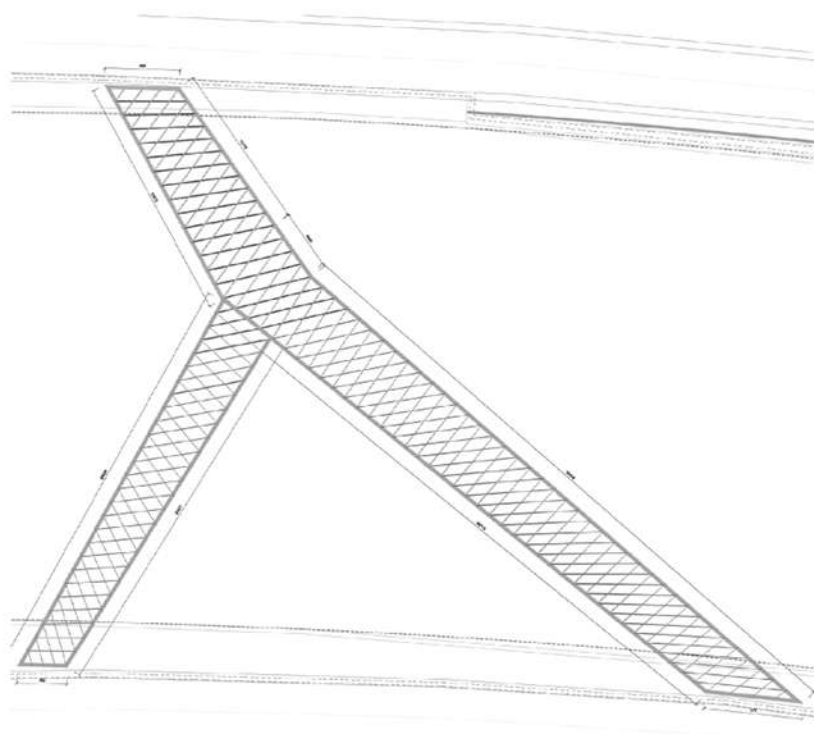
Disclaimer: This is a press kit, the use of the images and plans contained herein is not authorised.



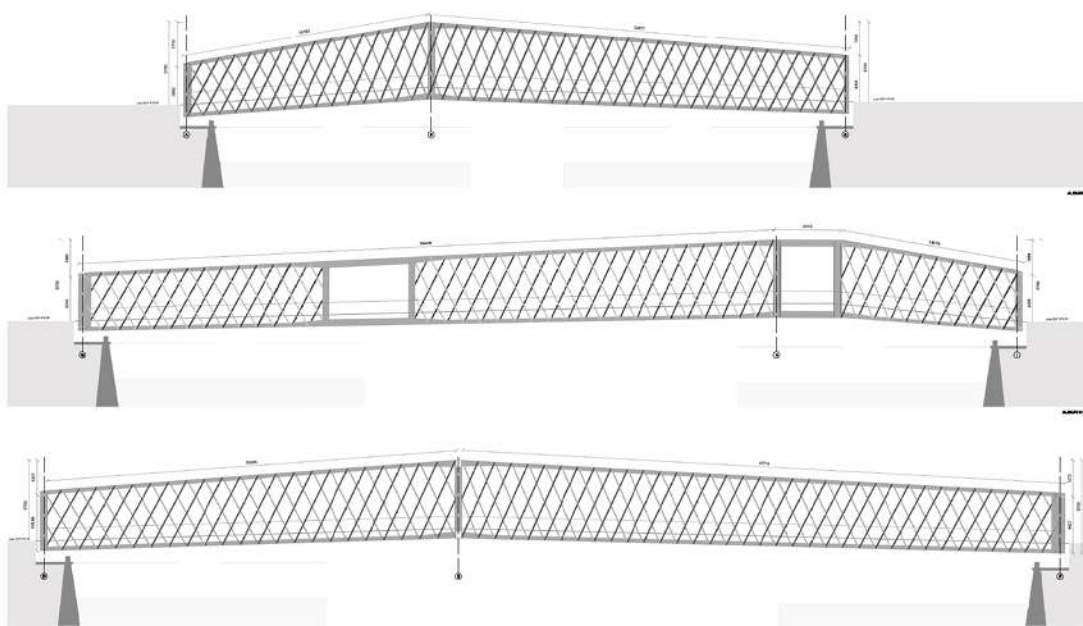
Situation	Madrid, Spain
Client	Madrid City Council
Architects	Francisco Burgos Ruiz (23/05/1959). Colegiado COAM 7816
	Ginés Garrido Colmenero (31/07/1962). Colegiado COAM 9103
Designers	Burgos & Garrido Arquitectos + Porras LaCasta Arquitectos + Rubio Álvarez-Sala Arquitectos + & West 8
Architecture team	Javier Malo de Molina, María Jesús Franco, Almudena Carro, Sergio de Castillo, Juan Galbis, Elisa Lara, Agustín Martín, Juan José Mateos, Raquel Marugán, Emilio Ontiveros, Juan Tur, Samir Alaoui, María Ángeles Fernández, Carlos Fernández, Elena Garicano, Eduardo González, Miguel Ángel López, Marina del Mármol, Gema Montáñez, Víctor Muñoz, María Ortega, Susana Paz, Antonia Peña, Lucía Prado, Jonás Prieto, Ramiro Sánchez, Emma Simonsson, Elena Verdú, Carlos Carnicer, Cristina Cordero, María Pilar Recio
Engineering	Cesma Engineering
Date	2010
Photography	Ana Muller Jerome Musch

“Y” BRIDGE IN MANZANARES RIVER PARK





I.
Floor Plan.



II.
Elevation Plan.

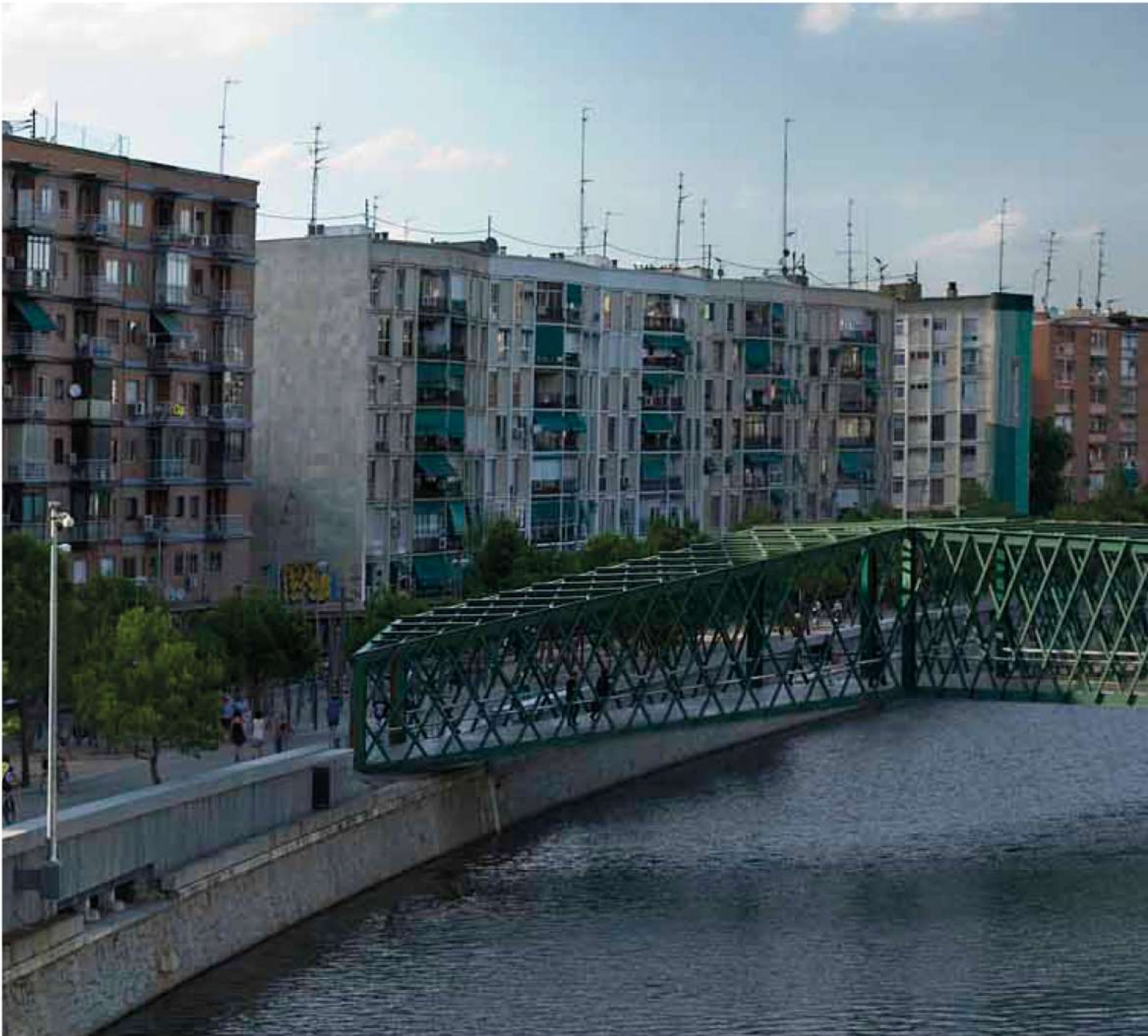
Descriptive text

On the two banks of the Manzanares River that links the 'Y' bridge runs the so-called 'hall of pines' of the Madrid Río project. On the right bank, southwest of the river, the 'hall of pines' runs from one end of the park to the other, i.e. for more than six kilometres, and on the left bank for more than two kilometres. The 'Y' bridge connects two equal landscapes on both banks, built with a very dense and exclusive plantation of pine trees. The bridge is constructed with dense lattices of steel profiles that completely envelop the bridge, on the sides of the deck and below and above it. These green-painted steel lattices establish the continuity of the enclosed, green, en-

veloping space of the pine forests on both banks.

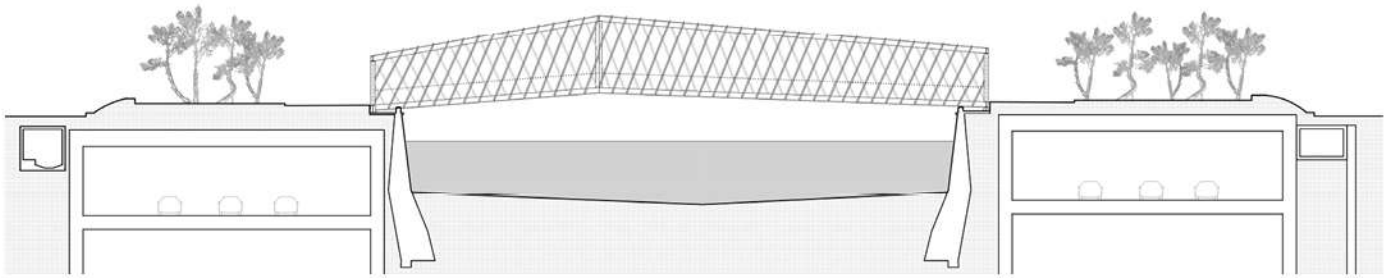
The position and layout of the bridge is the result of a provisional situation. The part of the Madrid Río project that was occupied by the Atlético de Madrid stadium will not be completed until 2024, thirteen years after the bridge. The layout of the bridge had to address two very different circumstances; first, as the end of the park on one side of the river and in a few years linking the urban development resulting from the demolition of the stadium.

“Y” BRIDGE IN MANZANARES RIVER PARK

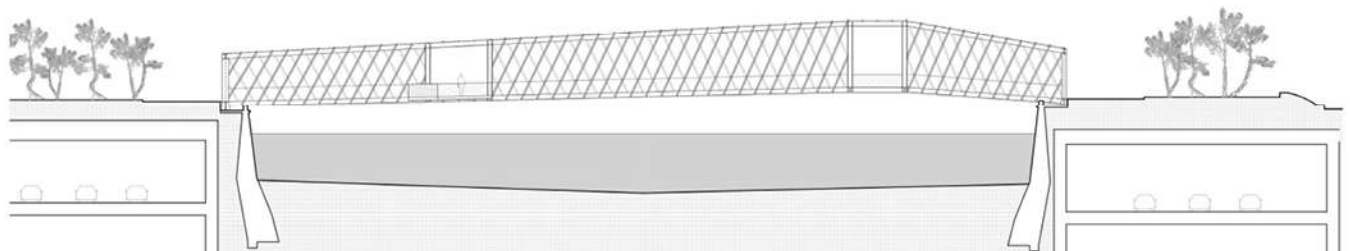




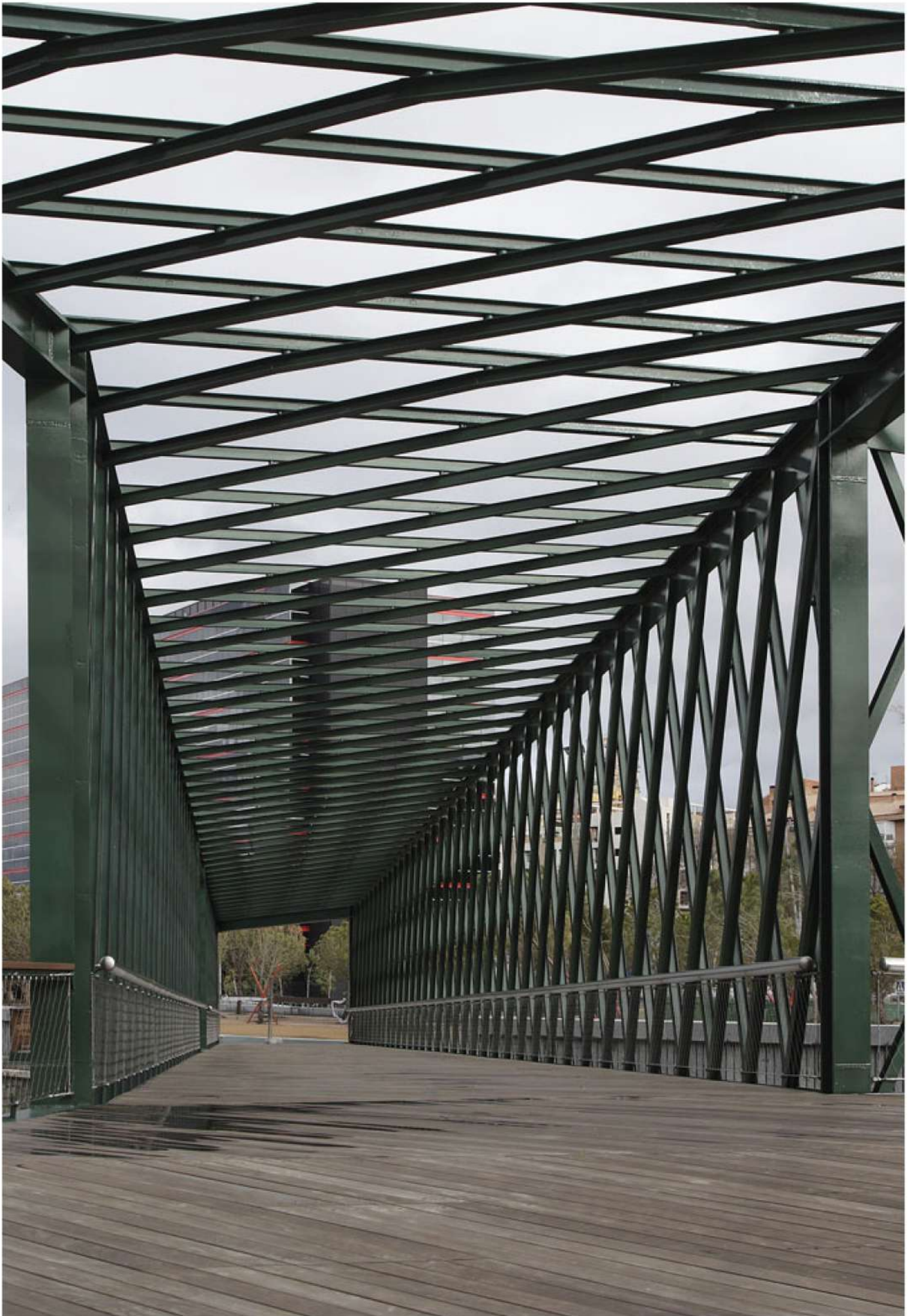
MADRID, SPAIN

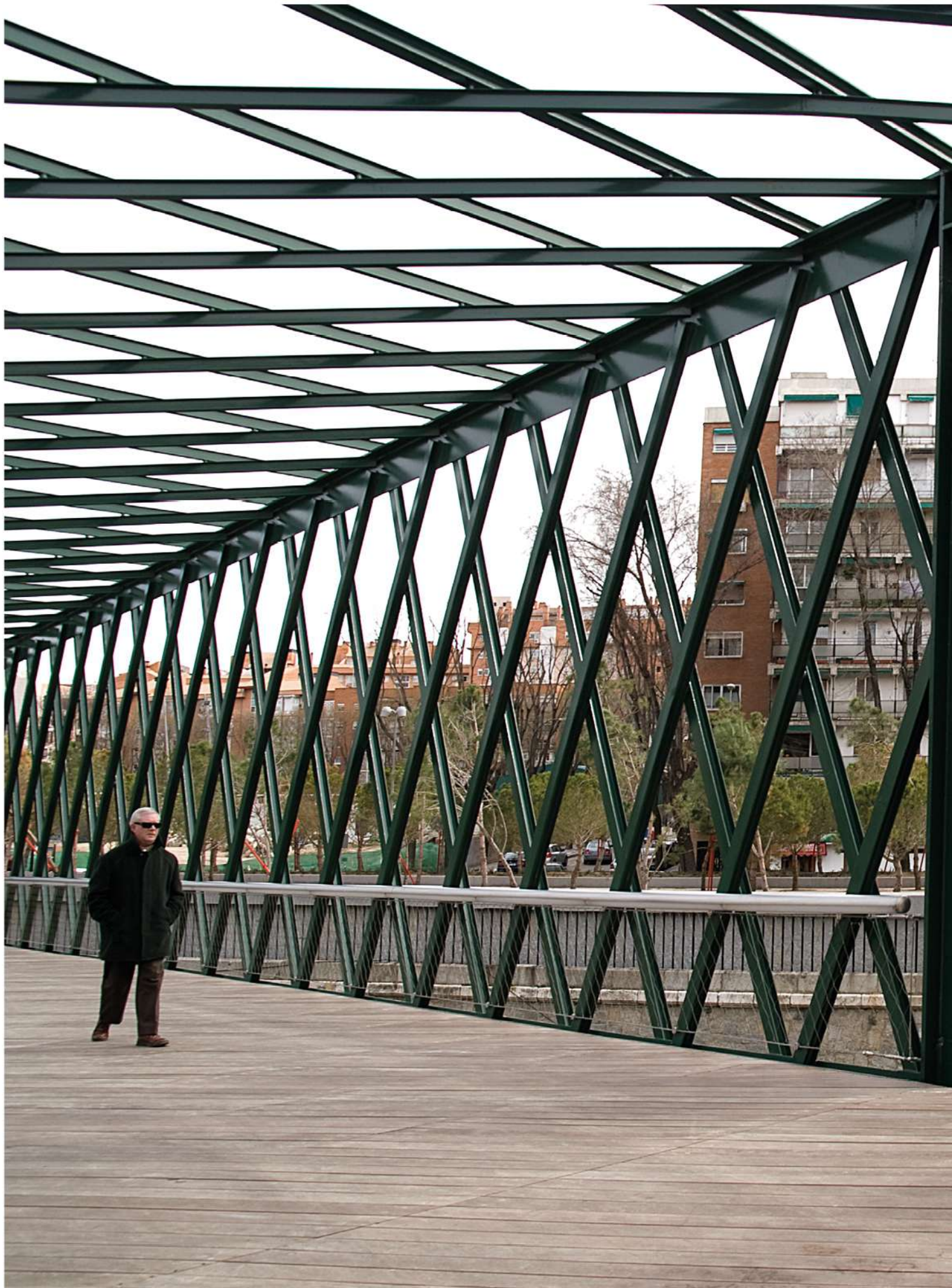


III.
Section.



IV.
Section.

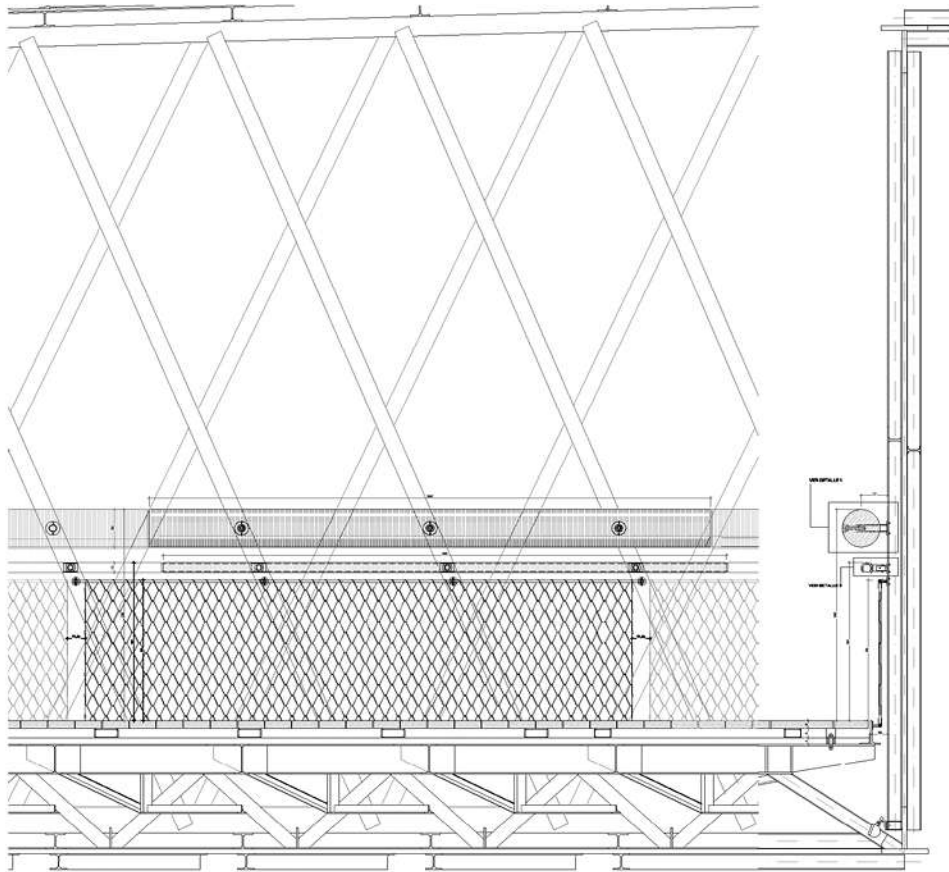




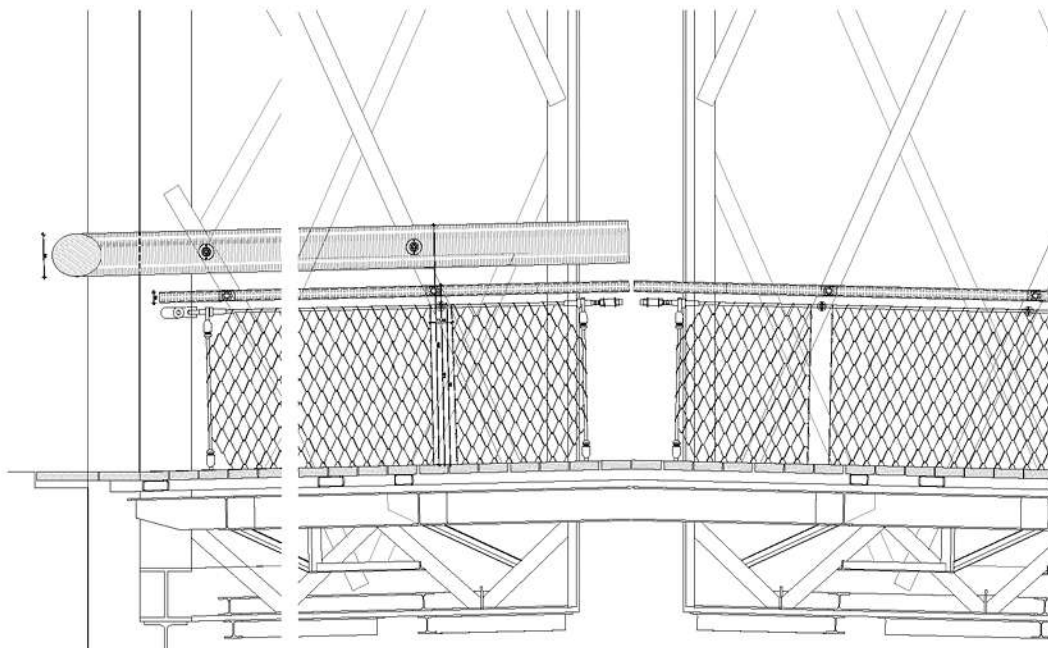


MADRID, SPAIN





V.
Constructive
Section.



VI.
Constructive
Section.



Y-MRIO

“Y” Bridge Manzanares River Park