



**BVI**

**Social Dwellings in Torre-Baró**

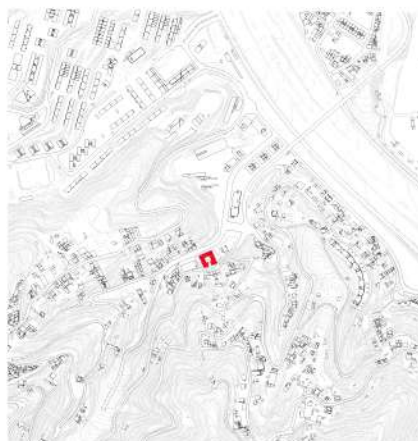
2017-2022

# BVI

## SOCIAL DWELLINGS IN TO- RRE BARÓ BARCELONA, ESPAÑA

AldayJover Arquitectes +  
Burgos & Garrido Arquitectos

Disclaimer: This is a press kit, the use of the images and plans contained herein is not authorised.



**Situation**  
**Client**

Torre-Baró, Barcelona, Spain  
Patronat Municipal de l'Habitatge de Barcelona

**Tipology**  
**Size**

Residential  
M | 3.424,47 m<sup>2</sup>

**Architects**

Iñaki Alday Sanz [AyJ]  
Margarita Jover Biboum [AyJ]  
Jesús Manuel Arcos Cordón [AyJ]  
Francisco Burgos Ruiz [BGA]  
Ginés Garrido Colmenero [BGA]

**Designers**  
**Architecture team**

AldayJover Arquitectes + Burgos & Garrido Arquitectos  
Claudia Sanllehy, Agustín Martín, Jimena Alonso, Pablo Delgado, Patricia Martínez, Andrea Bardón, María Pilar Recio, Jorge Oettel, Luis Manovel

**Collaborators**

AVANT Enginyers Consultors | BIS Structures |  
Benedicto Gestió de Projectes

**Date**

Contest 2017 | Project 2017 - 2022 | Construction 2022

**Renders**  
**Photography**

Poliedro Estudio  
Adrià Goula







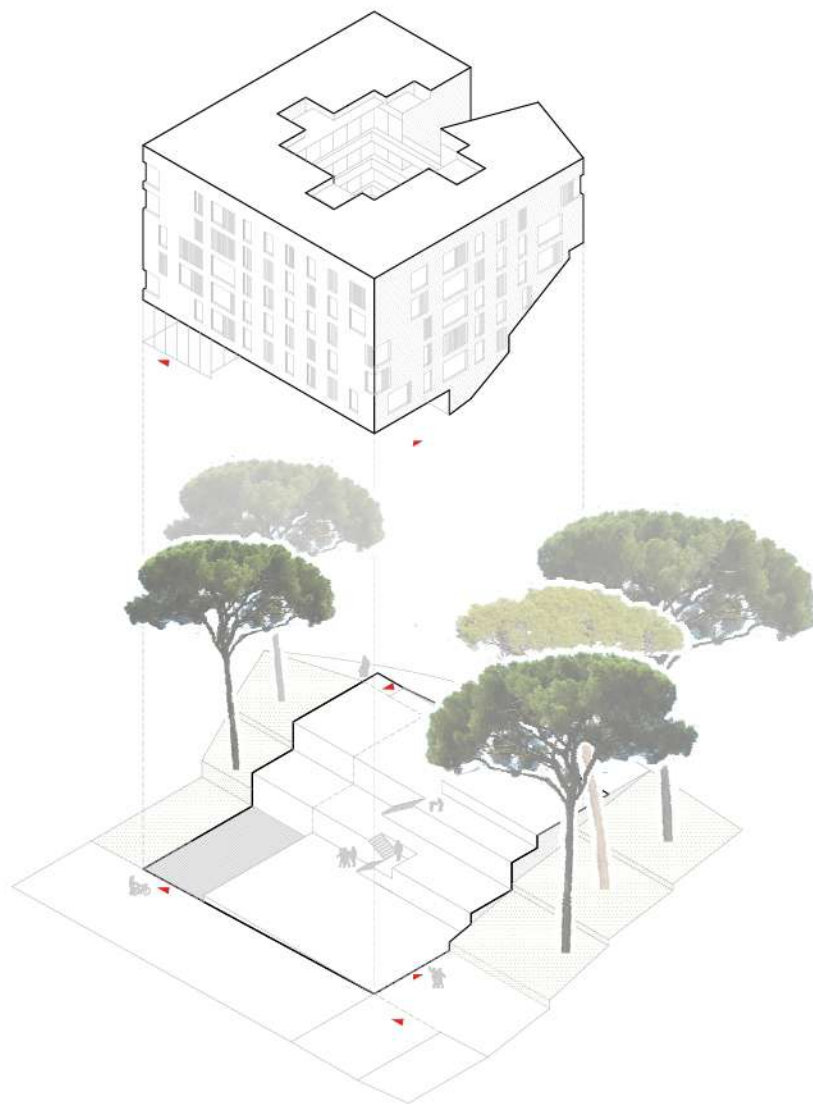


BARCELONA, SPAIN

### Descriptive text

The Torre Baró neighbourhood in Barcelona is characterised by a landscape with a domestic and peaceful atmosphere, by the strong presence of vegetation and by a pronounced topography that offers views over the Collserola mountain and the Besòs valley. The project seeks to make the most of these conditions. It moves away from the side boundaries where some large pine trees grow; it allows the light and the breeze to freely cross the building from side to side; and the existing topography is modified as little as necessary to make it a substantial part of the project through a sequence of distinct and well-qualified spaces that establishes the spatial and lighting link between the two streets that limit the plot. Access to the north is via a porch that opens onto the street and gently slopes down. From the porch one enters the courtyard and gradually ascending the set of terraces that lie on the slope one reaches the horizontal backwater facing south.

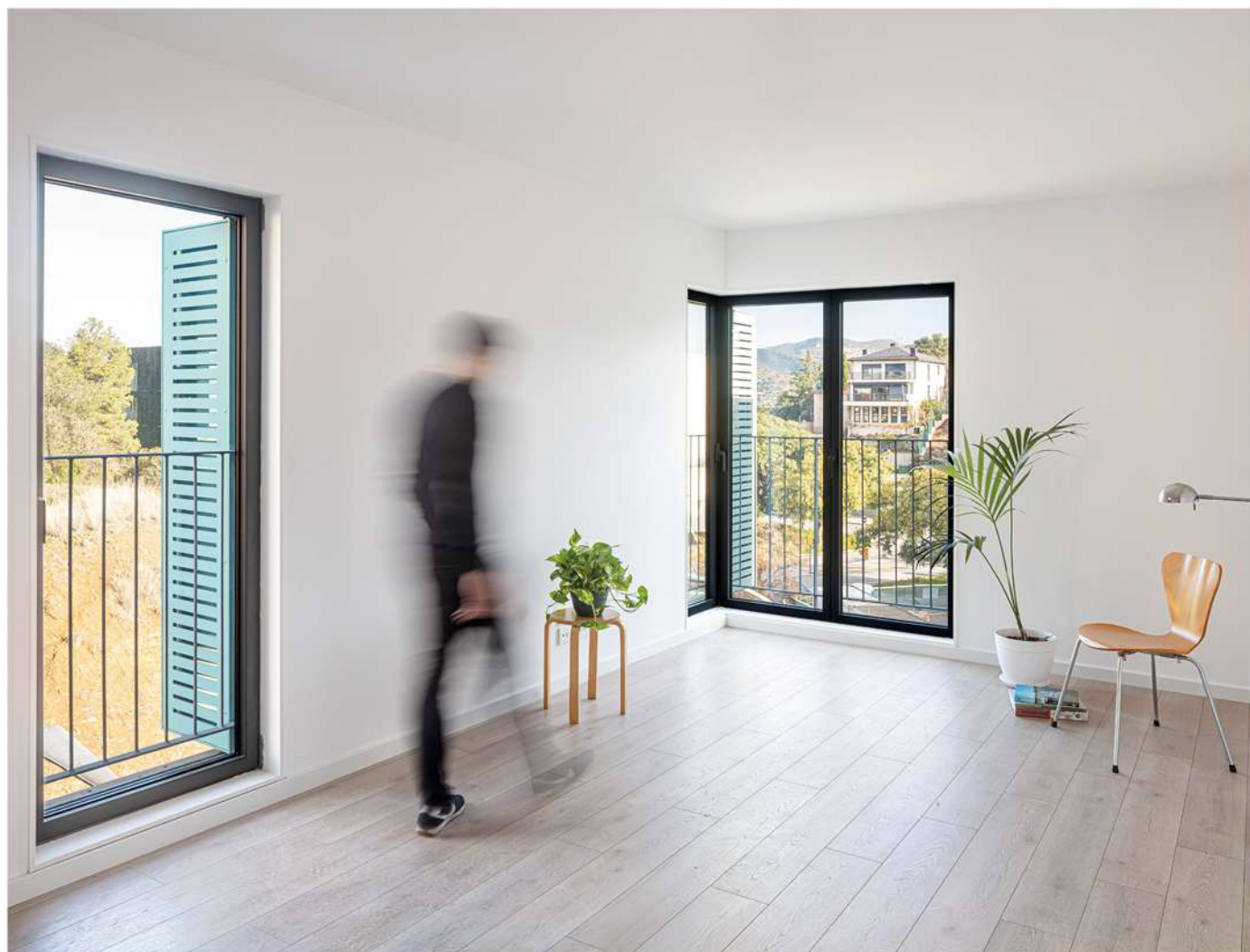
The built volume is a compact prism on the outside that wraps around itself, housing an open courtyard to the south, light and airy, which is the true heart of the project and gives access to all the dwellings. The exterior is the result of the collective character of the city. The openings formed by a small balcony and Mallorcan shutters articulate the façades and their repetition, addition and different positions establish the general order and a certain vibration. And the interior configures a scenario of domestic atmosphere for its inhabitants, where small widenings in the courtyard galleries and in the horizontal areas gained on the slope generate places for conversation. Thus the project incorporates resources of Mediterranean architecture with a closed and open volume, clear and complex, which has different facets and atmospheres.



I.  
Axonometric View.  
Volume's insertion in  
the site.







BARCELONA, SPAIN



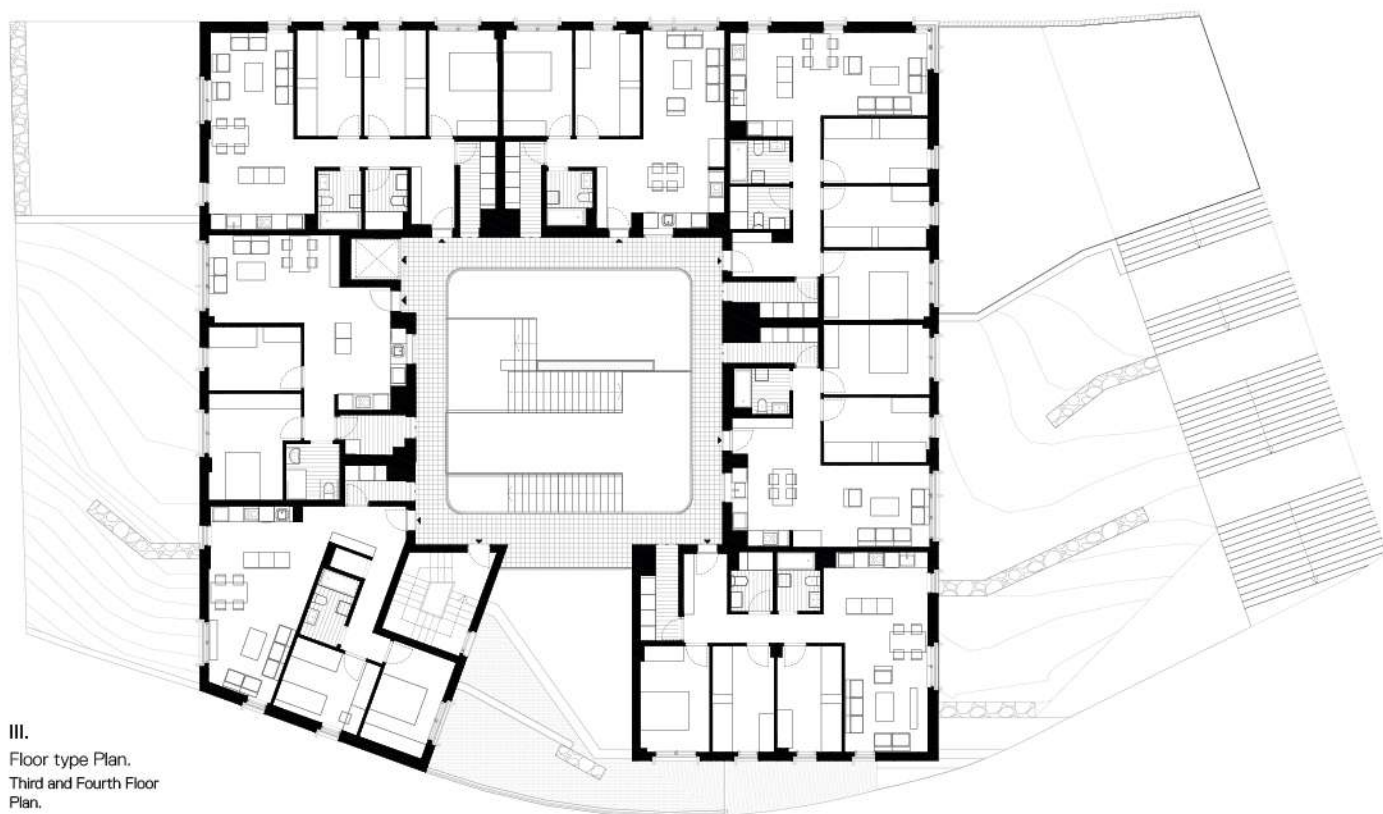
North-West elevation plan.  
from Avinguda d'Escopla  
Càncerthe site.







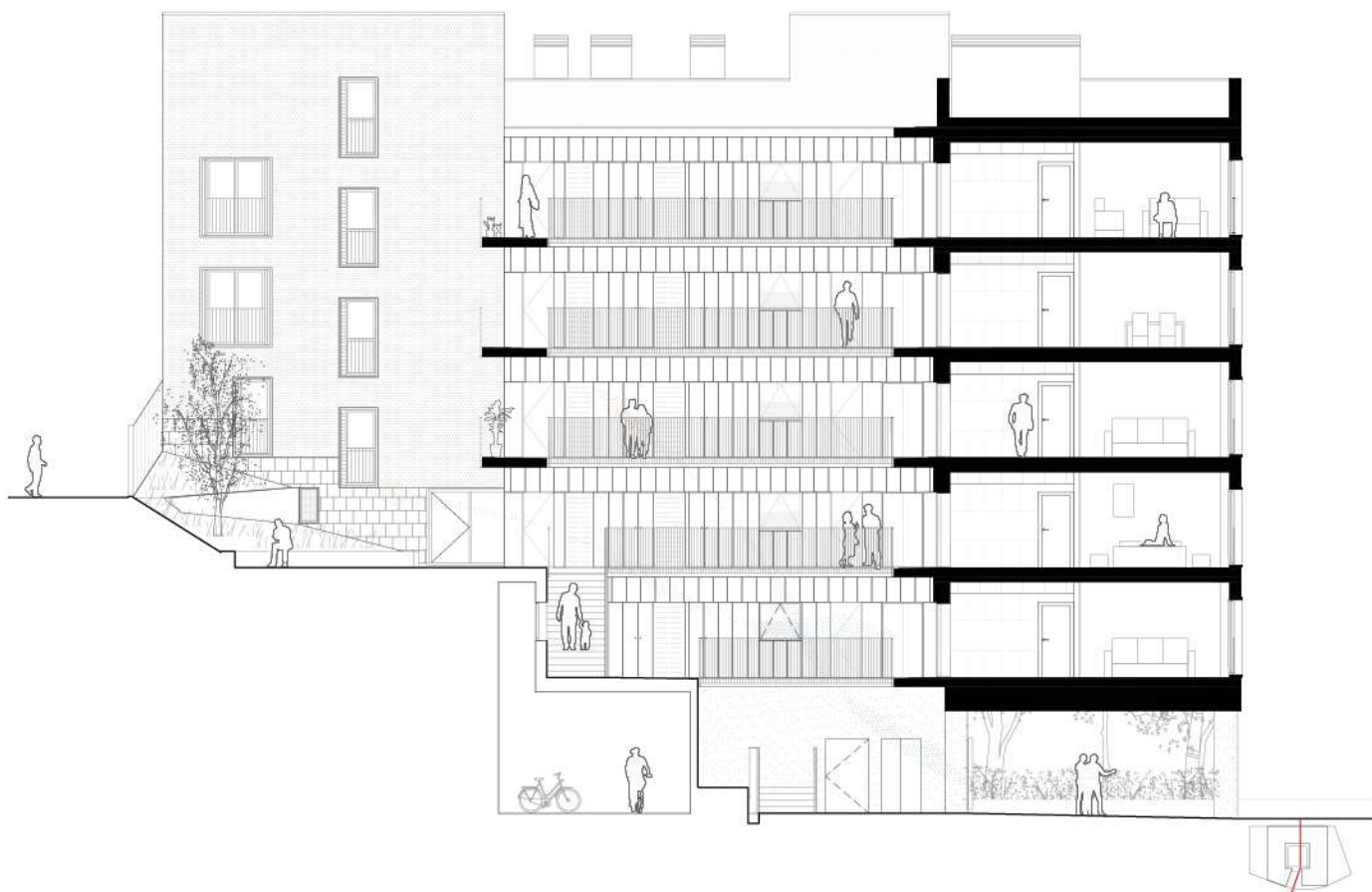




III.  
Floor type Plan.  
Third and Fourth Floor  
Plan.

BARCELONA, SPAIN





IV.  
Section,  
Main Section of the  
Building









To obtain high definition photographs  
and technical documents,  
please contact:  
[info@burgos-garrido.com](mailto:info@burgos-garrido.com)  
917 495 527

**BVI**

Viviendas Sociales en Torre-Baró | Barcelona, España  
2017-2022