

THE PALLADIUM

WORCESTER, MA

TYPE OF VENUE: THEATRE

BUILDING CURFEW: 1:30 AM

BUS / TRUCK PARKING AND LOAD IN: LEFT SIDE OF VENUE ON MARTIN LUTHER KING JR BLVD (LOADING SIDE). VEHICLES CAN STAY HERE FOR THE ENTIRETY OF THE DAY. WE CAN ACCOMMODATE UP TO 2 BUSES W/ TRAILER + 1 BUS WITH NO TRAILER...OR TWO BUSES WITH TRAILER AND ONE SEMI. IF ADDITIONAL PLEASE ADVANCE IF YOU NEED MORE PARKING...THAT HAS TO BE ARRANGED PRIOR TO SHOW DAY. NO SHORE POWER.

LOAD IN ACCESS: OFF STREET LOAD IN - APPROX ABOUT 25 FOOT PUSH UP 20X10 FOOT CEMENT RAMP DIRECTLY ONTO DECK. LOADING ON STAGE RIGHT

DRESSING ROOMS: 1ST FLOOR- PRIVATE BATHROOM, PRIVATE SHOWER LARGE GREEN ROOM, PRODUCTION OFFICE. 2ND FLOOR- PRIVATE BATHROOM, PRIVATE SHOWER, WASHER AND DRYER, LARGER GREEN ROOM. 3RD FLOOR- PRIVATE BATHROOM, 3 SMALL GREEN ROOMS

WASHER/DRYER: BRING OWN SUPPLIES. **NO SHOES!!! DO NOT START AFTER HEADLINER STARTS PLEASE**

VIP SECTION: SMALL BALCONY LOCATED HOUSE RIGHT 20 CAPACITY IF UNSOLD TO PUBLIC. DISCUSS NEEDS DURING ADVANCE.

CAPACITY: 2,560 INCLUDING BALCONY, 1,500 WITHOUT BALCONY

ACCESS POINT TO VENUE FROM BUS: ARTIST ENTRANCE NEXT TO LOADING DOORS

NUMBER OF MERCH POSITIONS: 2

SEARCH POLICIES: PAT DOWN @ FRONT DOOR

BARRICADE: YES. TYPE: BLOW THRU

VIDEO: NO PROFESSIONAL VIDEO.

SMOKING IN VENUE: NO

BEVERAGES FROM BAR: PLASTIC CUPS, BEER CANS & PLASTIC WATER BOTTLES. **ABSOLUTELY NO GLASS ON STAGE.**

COAT CHECK: NO

LOCAL AIRPORTS: LOGAN AIRPORT IN BOSTON (1 HOUR DRIVE), WORCESTER REGIONAL AIRPORT (10 MINUTES AWAY)

LOCAL EMERGENCY FACILITY: ST. VINCENT'S HOSPITAL (2 BLOCKS AWAY)

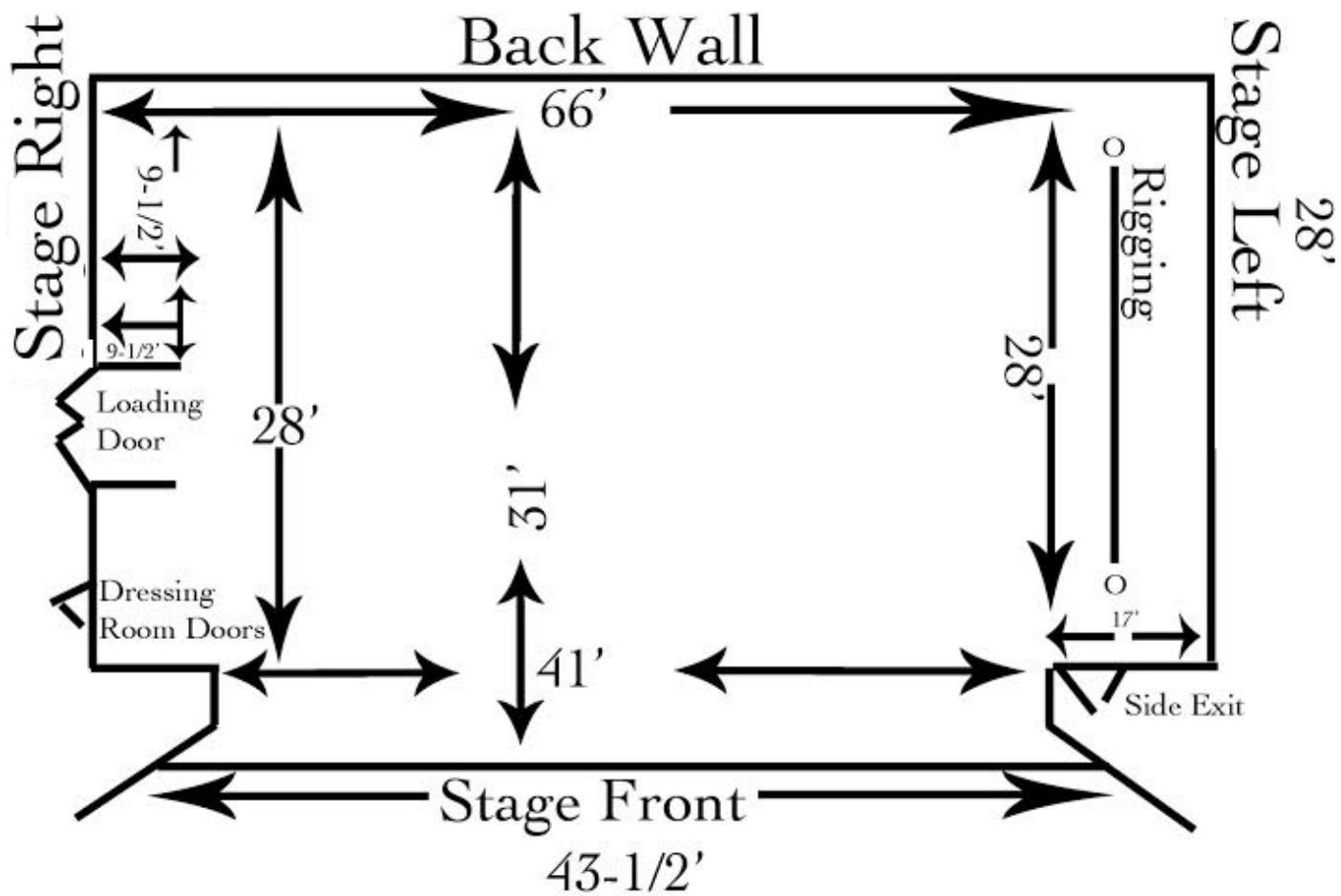
HOTELS: HILTON GARDEN INN, **HOLIDAY INN EXPRESS**** WALKING DISTANCE. ****Bands/Staff - \$119 a night plus tax based on availability you just need to ask for the "Palladium Rate". They also have plenty of bus parking available.**

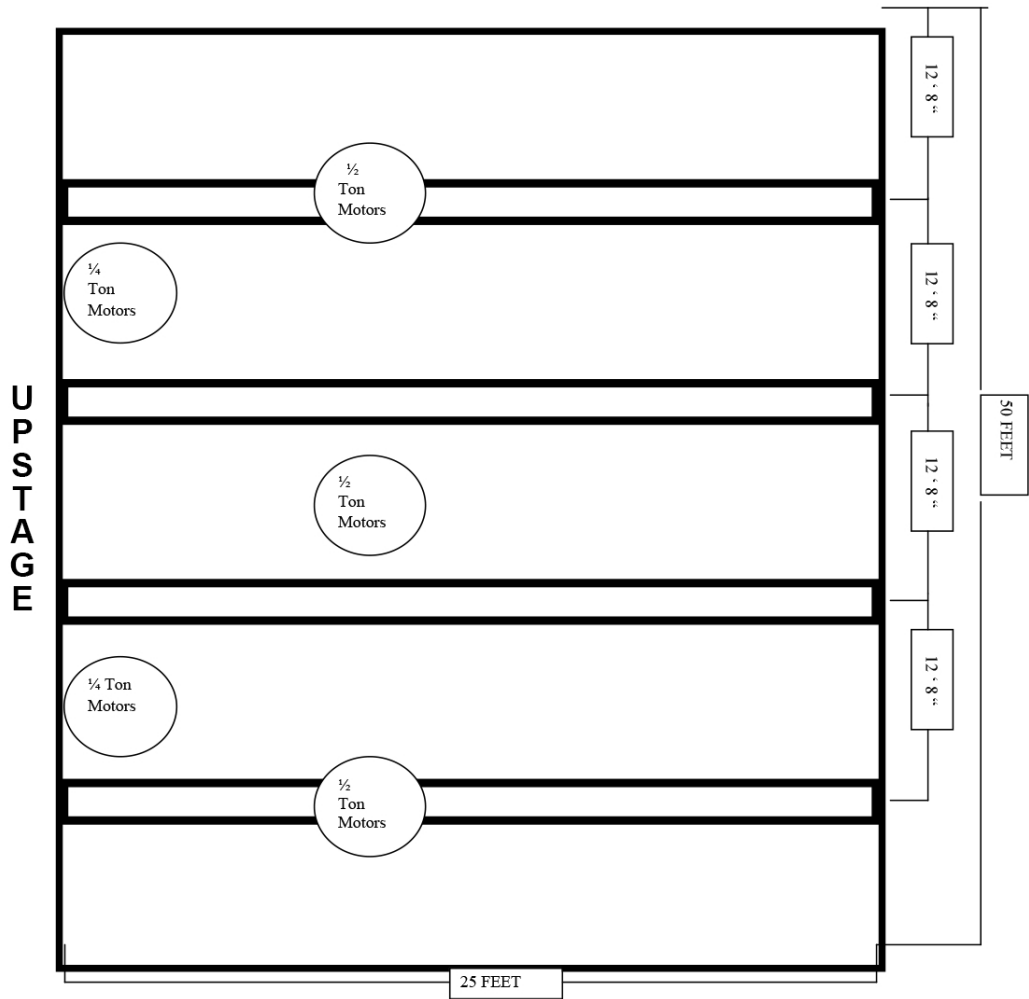
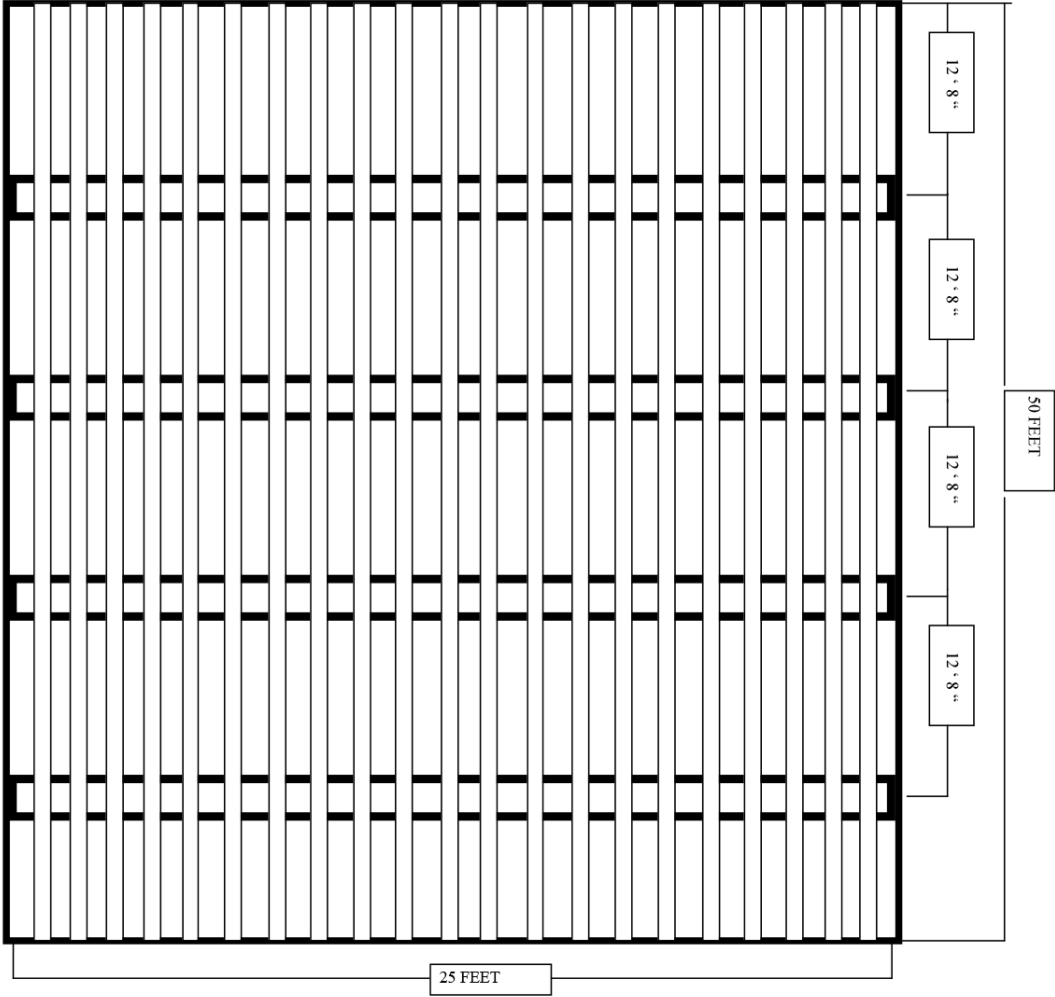
FOOD & BEVERAGE: STARBUCKS, PUB 99, PIZZERIA UNO ALL WALKING DISTANCE. SMALLER, LOCAL RESTAURANTS WALKING DISTANCE AS WELL.

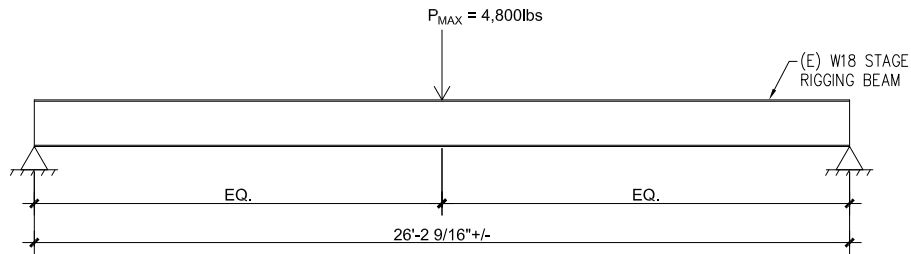
SHOPPING: MILLBURY SHOPS AT BLACKSTONE - 20 MINUTE DRIVE

GUITAR CENTER: 70 WORCESTER-PROVIDENCE TURNPIKE #410
MILLBURY, MA 508-865-3573 – 20 MINUTE DRIVE

WALMART: 25 TOBIAS BOLAND WAY, WORCESTER, MA 774-314-3157 – 15 MINUTE DRIVE

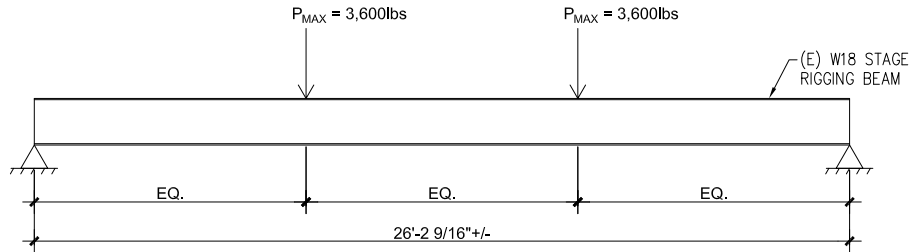






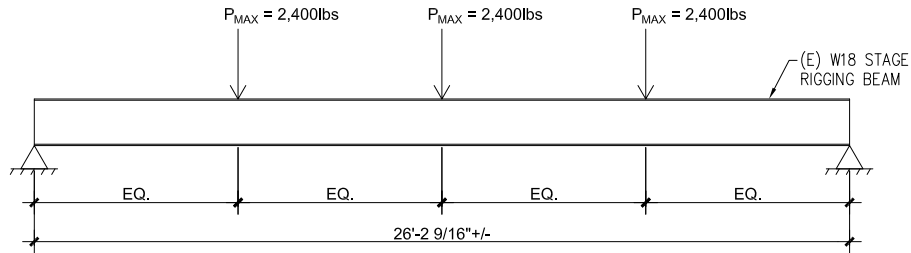
**EXISTING STAGE RIGGING BEAM WITH
ONE CONCENTRATED LOAD AT MID-SPAN**

SCALE: N.T.S.



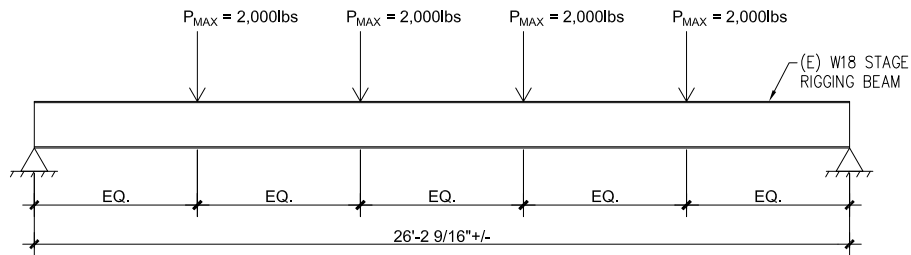
**EXISTING STAGE RIGGING BEAM WITH TWO
CONCENTRATED LOADS AT EQUAL SPACING**

SCALE: N.T.S.



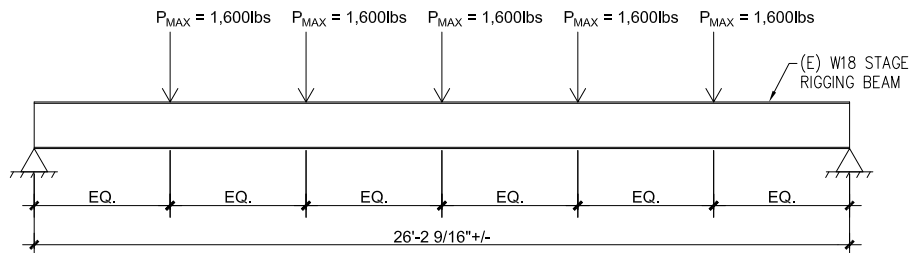
**EXISTING STAGE RIGGING BEAM WITH THREE
CONCENTRATED LOADS AT EQUAL SPACING**

SCALE: N.T.S.



**EXISTING STAGE RIGGING BEAM WITH FOUR
CONCENTRATED LOADS AT EQUAL SPACING**

SCALE: N.T.S.



**EXISTING STAGE RIGGING BEAM WITH FIVE
CONCENTRATED LOADS AT EQUAL SPACING**

SCALE: N.T.S.

SK-S1

scale: As Noted
date: 10.13.2017
drawn: IKM
chkd: RAJ

Structural Analysis of Existing Stage Rigging Beams
The Palladium
261 Main Street
Worcester, MA

JSE

Johnson Structural Engineering
101 Huntoon Memorial Highway (Rt. 56)
Rochdale, Massachusetts 01542
phone: (508) 892-4884 fax: (508) 892-0477

SCORPIO SOUND — SYSTEMS, Inc.

32 Scotland Blvd. Unit 7, Bridgewater, MA 02324
Tel: 508-584-0080, Fax: 508-807-1763
EMAIL: info@scorpiosound.net

02/26/2020

Scorpio's installed rig for the Palladium:

Per side-

10x flown d&b J Series (8xJ8 over 2xJ12)

6x JBL CSR82L double 18" subs

These subs have the same 18"s as the VerTec 4880 subs, but in a bigger box,
17.5 cubic feet, compared to 9.5 cubic feet = more output

d&b D12's on Tops, 7000FP+ on Subs, 1x Lake DLP, CD & CD burner

FOH Desk- Avid Profile digital mixing system with 4x Mix DSP Cards and Waves
Platinum

Monitor desk - Avid D-Show with side car and MixRack digital mixing system with 24
outputs

14x Scorpio single 15" & 2" wedges,

2x Scorpio double 15" & 2" drum fills , 2x d&b Q Sub Drum Subs,

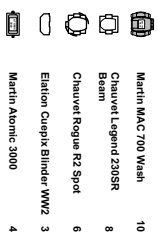
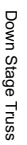
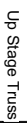
Lab.gruppen amps, Lake Contour Processing =12 bi-amped mixes,

8x d&b Audiotechnik C7 Subs and 4x C4 Tops for sidefills with d&b D12
amps/processors

Mics listed on a separate document.

Our power distribution has a set of same sex Camlok outs

e-mail info@scorpiosound.net with any questions or requests

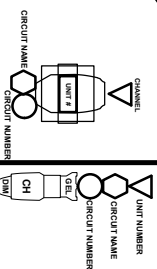


Front Of House Snake 150'
Line 1 : House


Console: High End Systems
HedgeHog4

Hazer: Antari HZ300

Power: 400 Amp 3 Phase
Pass throw



| | |
|----------------------|---------------|
| PROJECT: | DATE: |
| 0123201 The Paladium | 2/4/2020 |
| VENDOR: | REFERENCE: |
| The Paladium | |
| DESCRIPTION: | SCOPE: |
| JOI | v1 |
| DESIGN BY: | PROJECT: |
| FAT | |
| JOCONTACT: | PROJECT SIZE: |
| Derek Jordani | At Landscape |

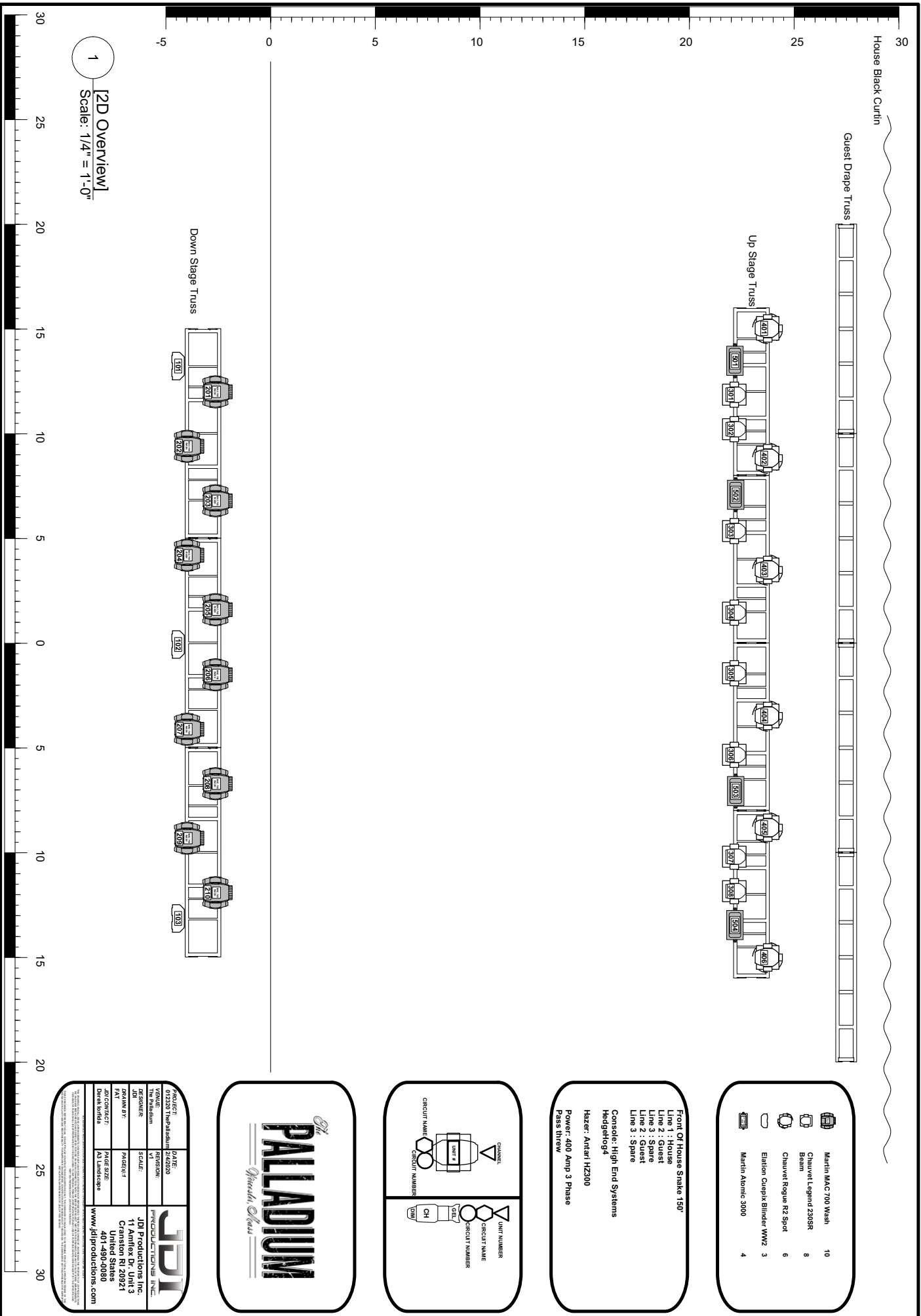


JDI
PRODUCTIONS INC.

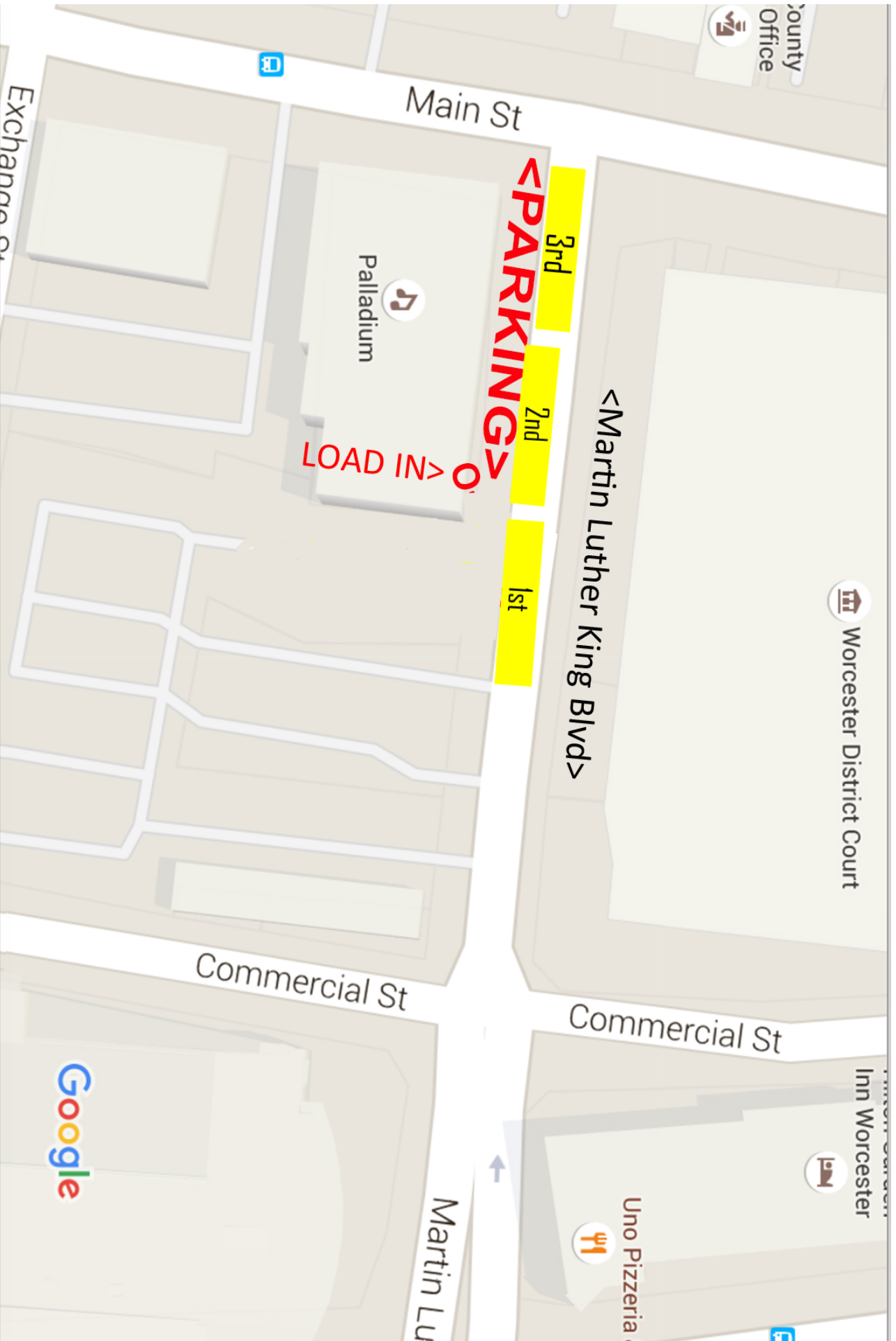
JDI Productions Inc.
11 Amherst Dr. Unit 3
Cranston RI 02921
United States
401-490-0080
www.jdi productions.com

[2D Overview]

Scale: 1/4" = 1'-0"



| | Num | Note | Patch | Patch N... | Patch T... | DP | IP Address |
|------------------------|-----|----------|--------|------------|------------|------------|------------|
| Desk Channel | | | | | | | |
| | 1 | Hazer | 1: 511 | | Fixture | 1: DP 8000 | |
| | 2 | Hazer | 1: 512 | | Fixture | 1: DP 8000 | |
| CuePix Blinder WW2 4ch | | | | | | | |
| | 101 | DS Truss | 1: 231 | | Fixture | 1: DP 8000 | |
| | 102 | DS Truss | 1: 235 | | Fixture | 1: DP 8000 | |
| | 103 | DS Truss | 1: 239 | | Fixture | 1: DP 8000 | |
| Mac 700 Wash extended | | | | | | | |
| | 201 | DS Truss | 1: 1 | | Fixture | 1: DP 8000 | |
| | 202 | DS Truss | 1: 24 | | Fixture | 1: DP 8000 | |
| | 203 | DS Truss | 1: 47 | | Fixture | 1: DP 8000 | |
| | 204 | DS Truss | 1: 70 | | Fixture | 1: DP 8000 | |
| | 205 | DS Truss | 1: 93 | | Fixture | 1: DP 8000 | |
| | 206 | DS Truss | 1: 116 | | Fixture | 1: DP 8000 | |
| | 207 | DS Truss | 1: 139 | | Fixture | 1: DP 8000 | |
| | 208 | DS Truss | 1: 162 | | Fixture | 1: DP 8000 | |
| | 209 | DS Truss | 1: 185 | | Fixture | 1: DP 8000 | |
| | 210 | DS Truss | 1: 208 | | Fixture | 1: DP 8000 | |
| Legend 230SR Beam m1 | | | | | | | |
| | 301 | US Truss | 1: 243 | | Fixture | 1: DP 8000 | |
| | 302 | US Truss | 1: 258 | | Fixture | 1: DP 8000 | |
| | 303 | US Truss | 1: 273 | | Fixture | 1: DP 8000 | |
| | 304 | US Truss | 1: 288 | | Fixture | 1: DP 8000 | |
| | 305 | US Truss | 1: 303 | | Fixture | 1: DP 8000 | |
| | 306 | US Truss | 1: 318 | | Fixture | 1: DP 8000 | |
| | 307 | US Truss | 1: 333 | | Fixture | 1: DP 8000 | |
| | 308 | US Truss | 1: 348 | | Fixture | 1: DP 8000 | |
| Rogue R2 Spot 21ch | | | | | | | |
| | 401 | US Truss | 1: 363 | | Fixture | 1: DP 8000 | |
| | 402 | US Truss | 1: 384 | | Fixture | 1: DP 8000 | |
| | 403 | US Truss | 1: 405 | | Fixture | 1: DP 8000 | |
| | 404 | US Truss | 1: 426 | | Fixture | 1: DP 8000 | |
| | 405 | US Truss | 1: 447 | | Fixture | 1: DP 8000 | |
| | 406 | US Truss | 1: 468 | | Fixture | 1: DP 8000 | |
| Atomic 3000 Strobe | | | | | | | |
| | 501 | US Truss | 1: 489 | | Fixture | 1: DP 8000 | |
| | 502 | US Truss | 1: 493 | | Fixture | 1: DP 8000 | |
| | 503 | US Truss | 1: 497 | | Fixture | 1: DP 8000 | |
| | 504 | US Truss | 1: 501 | | Fixture | 1: DP 8000 | |



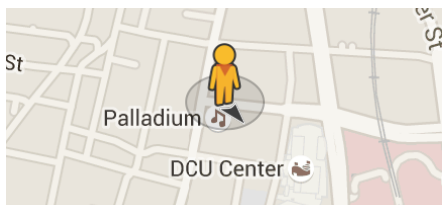
Google Maps 28 Martin Luther King Jr Blvd



Image capture: Jul 2011 © 2015 Google

Worcester, Massachusetts

Street View - Jul 2011



FOOD MENU LINKS

Updated: July 2020

BREAKFAST

Doughnuts and Draughts – Located on the corner of our building

Courthouse Cafe - <https://www.gfcourthousecafe.com/pages/menu.aspx>

Altea's Eatery - <http://www.alteaseatery.com/breakfast-menu/>

Worcester has a large variety of old fashion diner car restaurants.

LUNCH

Spoodles Deli - <http://www.spoodlesdeli.com/menus/>

Figs 'n' Pigs - <http://www.figsandpigs-kitchen.com/menu.html>

Courthouse Cafe - <http://www.gfcourthousecafe.com/Menu/0/MenuItems.aspx>

LUNCH AND DINNER

Armsby Abbey - <http://armsbyabbey.com/>

Dead Horse - <https://www.deadhorsehill.com/>

Mezcal (MexiCali) - <https://www.mezcaltantina.com/mezcal-worcester-menu/>

Ciao Bella (Italian) - <https://orderonline.granburyrs.com/slice/menu/main>

Mai Tai (Sushi) - <https://www.allmenus.com/ma/worcester/598372-mai-tai-sushi-bar/menu/>

Shangri La - <http://www.shangrilarestaurant.net/menu.asp>

O'Connors (Irish) - <http://www.oconnorsrestaurant.com/>

Wings Over Worcester - <http://www.wingsoverworcester.com/>

Unos - <https://www.unos.com/>

Antonios Pizza - <http://antonios.omniaagency3.wpengine.com/wp-content/themes/Antonios/assets/images/WorcesterDineIn.pdf>

VEGGIE OPTIONS

Belmont Vegetarian - <http://www.belmontvegetarian.com/menu.html>

Loving Hut - <https://lovinghut.us/worcester/menu/>

Rice Violet (Thai Bistro) - <http://eat24hrs.com/restaurants/order2/menu.php?id=73730>