

THE PALLADIUM UPSTAIRS

WORCESTER, MA

TYPE OF VENUE: THEATRE

BUILDING CURFEW: 1:30 AM

BUS / TRUCK PARKING AND LOAD IN: LEFT SIDE OF VENUE ON MARTIN LUTHER KING JR BLVD (LOADING SIDE). VEHICLES CAN STAY HERE FOR THE ENTIRETY OF THE DAY. WE CAN ACCOMMODATE UP TO 2 BUSES W/ TRAILER + 1 BUS WITH NO TRAILER...OR TWO BUSES WITH TRAILER AND ONE SEMI. IF ADDITIONAL PLEASE ADVANCE IF YOU NEED MORE PARKING...THAT HAS TO BE ARRANGED PRIOR TO SHOW DAY. NO SHORE POWER.

LOAD IN ACCESS: APPROX 25 FT TO FRONT DOOR, UP ONE STEP, STRAIGHT THROUGH THE LOBBY, UP A RAMP INTO THE ROOM. THEN SMALL LIFT ONTO STAGE.

DRESSING ROOMS: 1ST FLOOR- PRIVATE BATHROOM, PRIVATE SHOWER LARGE GREEN ROOM, PRODUCTION OFFICE. 2ND FLOOR- PRIVATE BATHROOM, PRIVATE SHOWER, WASHER AND DRYER, LARGER GREEN ROOM. 3RD FLOOR- PRIVATE BATHROOM, 3 SMALL GREEN ROOMS

PLEASE NOTE THAT DRESSING ROOM ACCESS IS CONTINGENT ON THERE BEING NO SHOW IN THE DOWNSTAIRS ROOM THAT DAY.

WASHER/DRYER: BRING OWN SUPPLIES. **NO SHOES!!! DO NOT START AFTER HEADLINER STARTS PLEASE**

CAPACITY: 500 CAPACITY

ACCESS POINT TO VENUE FROM BUS: ARTIST ENTRANCE IS THROUGH FRONT DOORS.

NUMBER OF MERCH POSITIONS: 1X LOCATED IN LOFT AREA OF ROOM.

SEARCH POLICIES: PAT DOWN @ FRONT DOOR

BARRICADE: YES. TYPE: NO BARRICADE IN UPSTAIRS ROOM

VIDEO: NO PROFESSIONAL VIDEO.

SMOKING IN VENUE: NO

BEVERAGES FROM BAR: PLASTIC CUPS, BEER CANS & PLASTIC WATER BOTTLES. **ABSOLUTELY NO GLASS ON STAGE.**

COAT CHECK: NO

LOCAL AIRPORTS: LOGAN AIRPORT IN BOSTON (1 HOUR DRIVE), WORCESTER REGIONAL AIRPORT (10 MINUTES AWAY)

LOCAL EMERGENCY FACILITY: ST. VINCENT'S HOSPITAL (2 BLOCKS AWAY)

HOTELS: HILTON GARDEN INN, **HOLIDAY INN EXPRESS**** WALKING DISTANCE. ****Bands/Staff - \$119 a night plus tax based on availability you just need to ask for the "Palladium Rate". They also have plenty of bus parking available.**

FOOD & BEVERAGE: STARBUCKS, PUB 99, PIZZERIA UNO ALL WALKING DISTANCE. SMALLER, LOCAL RESTAURANTS WALKING DISTANCE AS WELL.

SHOPPING: MILLBURY SHOPS AT BLACKSTONE - 20 MINUTE DRIVE

GUITAR CENTER: 70 WORCESTER-PROVIDENCE TURNPIKE #410 MILLBURY, MA 508-865-3573 – 20 MINUTE DRIVE

WALMART: 25 TOBIAS BOLAND WAY, WORCESTER, MA 774-314-3157 – 15 MINUTE DRIVE

THE PALLADIUM UPSTAIRS — Audio Specs

Main speakers: EV MT4, 1 stack per side

Monitors: 3 mixes, JBL SR, 15" & 1" passive

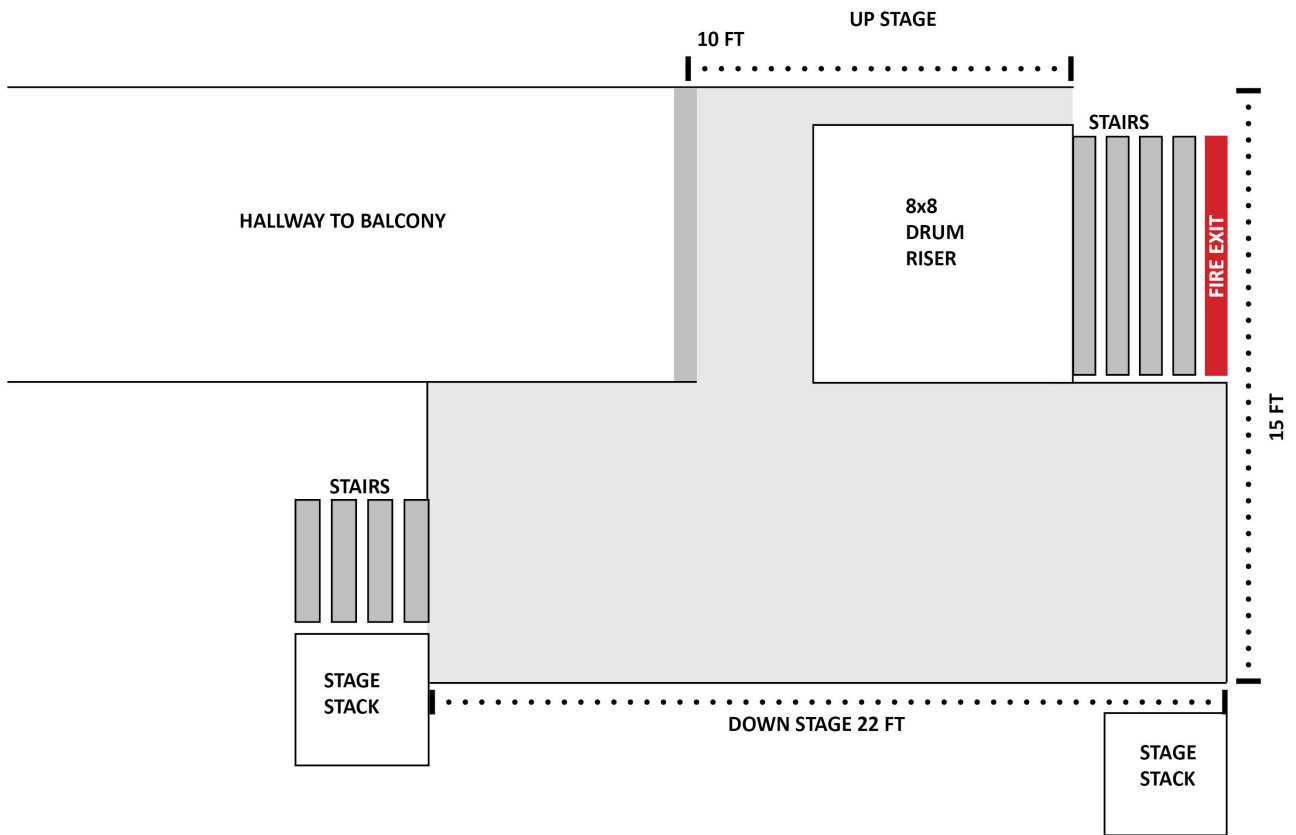
Drum box: 1 mix 2-18", 12", 1" bi-amp

Mics: Basic Sure package, 58's 57's, Sennheiser drum mics

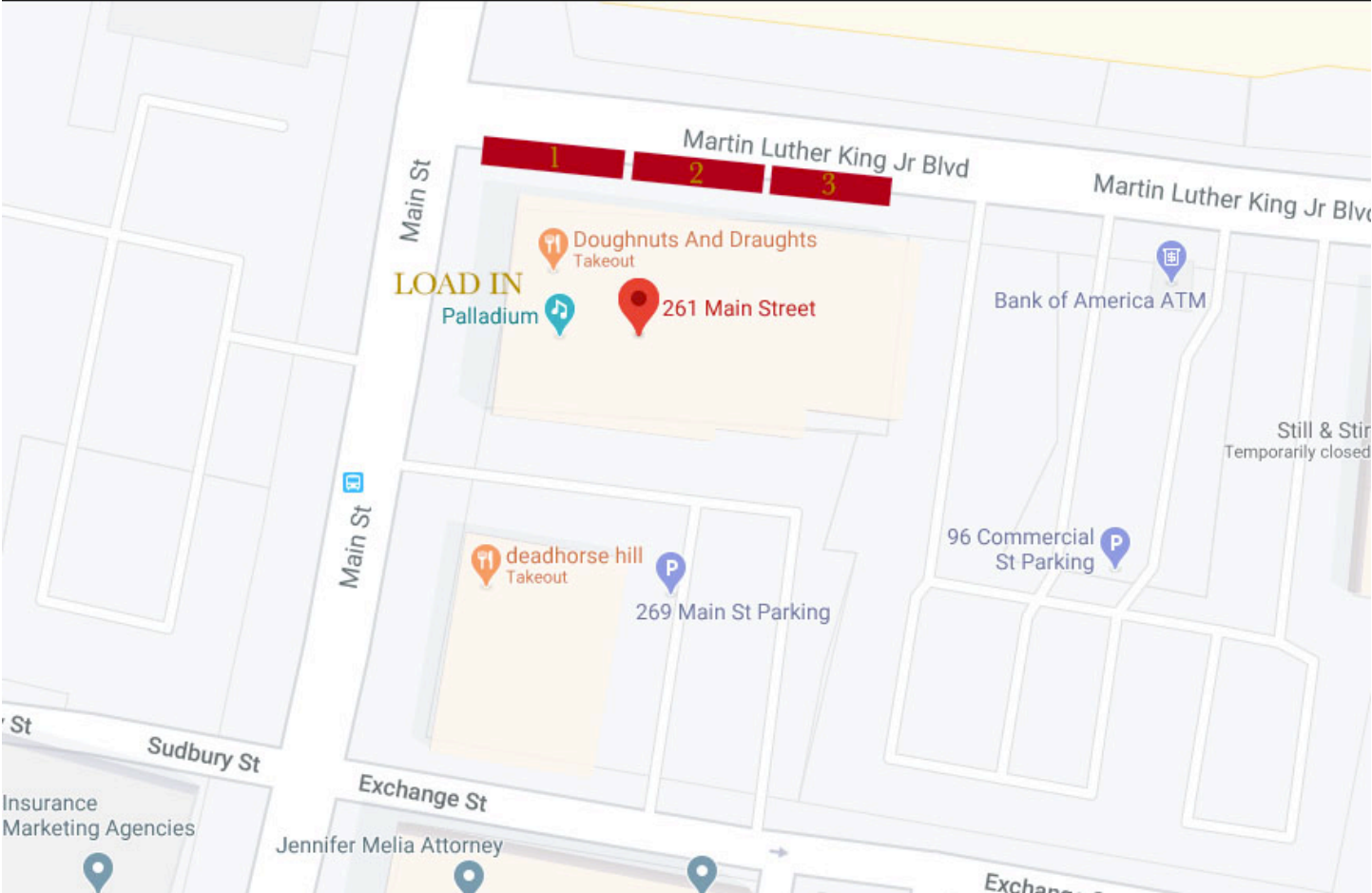
Mic stands: 5 tall booms, 5 short booms, 2 strait stands

Snake: 24x8 main snake, 16 channel sub

Console: Behringer X32, 24 channel snake



PALLADIUM UPSTAIRS — PARKING



FOOD MENU LINKS

Updated: July 2020

BREAKFAST

Doughnuts and Draughts – Located on the corner of our building

Courthouse Cafe - <https://www.gfcourthousecafe.com/pages/menu.aspx>

Altea's Eatery - <http://www.alteaseatery.com/breakfast-menu/>

Worcester has a large variety of old fashion diner car restaurants.

LUNCH

Spoodles Deli - <http://www.spoodlesdeli.com/menus/>

Figs 'n' Pigs - <http://www.figsandpigs-kitchen.com/menu.html>

Courthouse Cafe - <http://www.gfcourthousecafe.com/Menu/0/MenuItems.aspx>

LUNCH AND DINNER

Armsby Abbey - <http://armsbyabbey.com/>

Dead Horse - <https://www.deadhorsehill.com/>

Mezcal (MexiCali) - <https://www.mezcaltantina.com/mezcal-worcester-menu/>

Ciao Bella (Italian) - <https://orderonline.granburyrs.com/slice/menu/main>

Mai Tai (Sushi) - <https://www.allmenus.com/ma/worcester/598372-mai-tai-sushi-bar/menu/>

Shangri La - <http://www.shangrilarestaurant.net/menu.asp>

O'Connors (Irish) - <http://www.oconnorsrestaurant.com/>

Wings Over Worcester - <http://www.wingsoverworcester.com/>

Unos - <https://www.unos.com/>

Antonios Pizza - <http://antonios.omniaagency3.wpengine.com/wp-content/themes/Antonios/assets/images/WorcesterDineIn.pdf>

VEGGIE OPTIONS

Belmont Vegetarian - <http://www.belmontvegetarian.com/menu.html>

Loving Hut - <https://lovinghut.us/worcester/menu/>

Rice Violet (Thai Bistro) - <http://eat24hrs.com/restaurants/order2/menu.php?id=73730>