



# THE OCEANIS 40.1





# THE OCEANIS 40.1

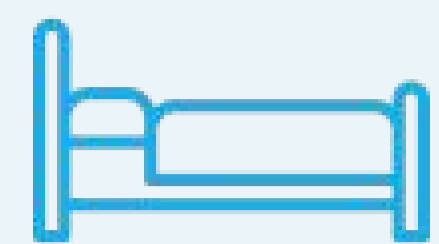
The Oceanis 40.1 is a masterful blend of elegance, performance, and comfort, designed to appeal to sailors who crave both sophistication and versatility on the water. As part of Beneteau's renowned Oceanis line, this 40-foot cruiser represents a thoughtful evolution in modern yacht design, marrying sleek aesthetics with practical functionality. Its striking lines and contemporary hull reflect a commitment to efficiency and speed, while the spacious interior and intelligently configured cockpit ensure that life aboard is as comfortable as it is exhilarating.

Inside, the Oceanis 40.1 offers a warm and inviting atmosphere, featuring natural light, airy spaces, and high-quality finishes. The layout can be customized to accommodate families or charter guests, with multiple cabins, a functional galley, and ample storage that make extended voyages a pleasure rather than a challenge. Outside, the cockpit is designed for both socializing and sailing efficiency, with ergonomically positioned controls, generous seating, and seamless access to the deck and swim platform.

Whether you're navigating coastal waters or embarking on a bluewater adventure, the Oceanis 40.1 balances performance and ease of handling. It's engineered to deliver smooth, stable sailing while remaining accessible to a wide range of sailors, from enthusiasts to seasoned cruisers. With its combination of style, comfort, and sailing capability, the Oceanis 40.1 is more than just a yacht — it's an invitation to explore the seas in confidence and style.

# FEATURES

## ACCOMMODATION



Std: 2 CABINS  
Opt: 3 CABINS  
4 CABINS

## BATHROOMS



Std: 1  
Opt: 2

## LIVING



SALOON: U SHAPE LOUNGE WITH TABLE  
GALLEY: U SHAPE  
Opt: AIRCONDITIONING

## AMBIENCE



Std: WALNUT ALPI JOINERY  
Opt: SAND OAK ALPI JOINERY

## SAILPLAN



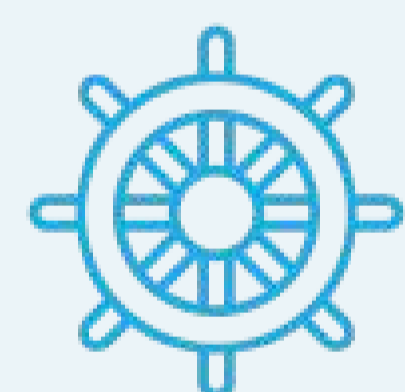
Std: IN MAST FURLING MAINSAIL + SELF TACKING JIB  
Opt: CLASSIC MAST  
GENOA  
ASSYMMETRICAL SPINNAKER / CODE 0  
PERFORMANCE PACK

## NAVIGATION



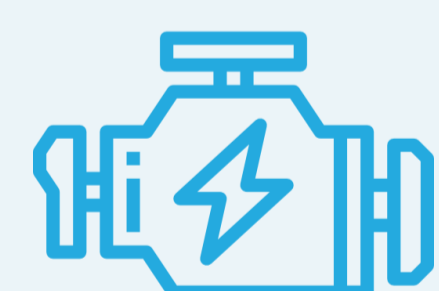
Std: TWIN WHEEL STEER  
Opt: RAYMARINE COASTAL PACK WITH AXIOM MFD  
RAYMARINE OFFSHORE PACK WITH 2 x AXIOM MFD

## COCKPIT



Std: TWIN WHEEL STEERING  
Opt: SOFT BIMINI  
L SHAPED COCKPIT BENCHES CENTRAL TABLE WITH  
FOLDING LEAVES

## ENGINE

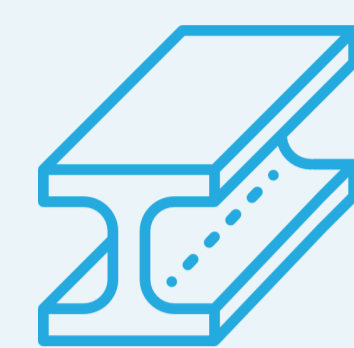


Std: YANMAR 45HP SHAFT DRIVE  
Opt: 6.4Kva GENERATOR  
RETRACTABLE BOWTHRUSTER

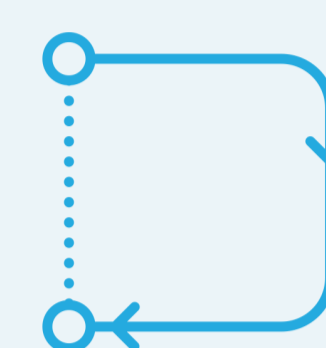
# SPECIFICATIONS



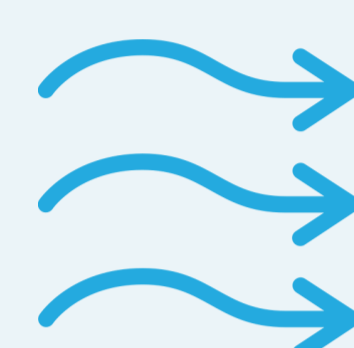
LENGTH OVERALL  
42'3" / 12.87M



BEAM OVERALL  
13'9" / 4.18M



LIGHT DISPLACEMENT  
7,985KG

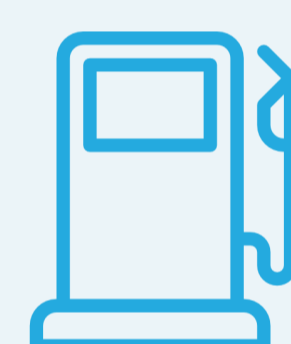


AIR DRAUGHT MAX  
60'2" / 18.33M

### KEEL



STD: FIXED DEEP DRAUGHT 7'5" /  
2.27M  
OPT: FIXED SHALLOW DRAUGHT  
5'6" / 1.68M PERFORMANCE  
DRAUGHT 7'5" / 2.27M



FUEL CAPACITY  
195L



WATER CAPACITY  
STD: 235L  
OPT: +330L



CE CERTIFICATION  
A10 / B10 / C12



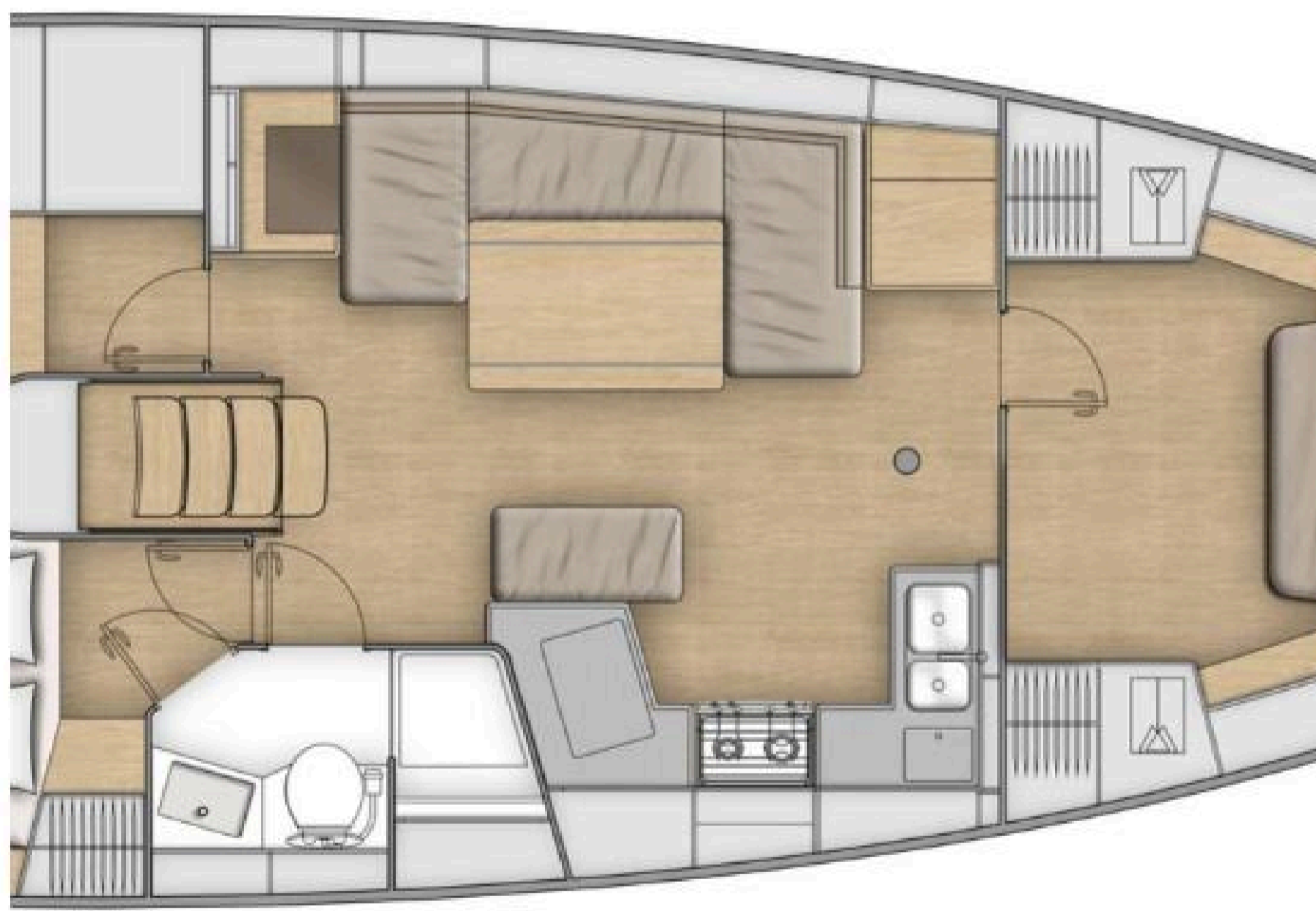
Océanis 40.1 - Mention obligatoire / Mandatory c



Océanis 40.1 - Mention obligatoire / Mandat



Océanis 40.1 - Mention obligatoire / Mandatory c



Océanis 40.1 - Mention obligatoire / Mandat



Océanis 40.1 - Mention obligatoire / Mandatory c



Océanis 40.1 - Mention obligatoire / Mandatory c

# CONTACT



**1300 110 489**



**[sales@spiritmarineqld.com](mailto:sales@spiritmarineqld.com)**



**Gold Coast, Brisbane, Sunshine Coast  
The Whitsundays, Cairns/Port Douglas**

**Spirit Marine Queensland Pty Ltd**

**[www.spiritmarineqld.com](http://www.spiritmarineqld.com)**

**ABN: 87 615 530 928**