



THE OCEANIS YACHT 60





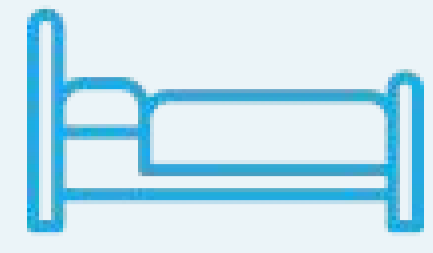
THE OCEANIS YACHT 60

The Oceanis 60 is a true flagship of modern cruising yachts, combining elegance, performance, and comfort in one impressive vessel. Designed for sailors who value both style and substance, this 60-foot yacht embodies the perfect balance between high-end luxury and practical functionality on the water. From the moment you step aboard, the Oceanis 60 exudes sophistication, with sleek lines, a spacious deck, and a refined interior that maximizes natural light and comfort.

Beneath its striking exterior lies a yacht engineered for performance and ease of handling. With advanced hull design and thoughtful sail plan, the Oceanis 60 offers a smooth, stable ride even in challenging conditions, making long passages as enjoyable as coastal cruising. Its expansive cockpit and intuitive layout ensure that both experienced sailors and newcomers can navigate with confidence, while the carefully designed deck spaces provide ample room for relaxation and socializing.

Inside, the Oceanis 60 continues to impress with its open, airy living spaces, high-quality finishes, and smart layout options that cater to families, couples, or groups of friends. Multiple cabins and bathrooms, generous storage, and a well-appointed galley make extended voyages comfortable and convenient. Every detail has been considered to provide a seamless blend of luxury and functionality, whether underway or at anchor.

FEATURES



ACCOMMODATION

Std: 3 CABINS
Opt: 4 CABINS + SKIPPERS CABIN
SEMI RIGID BIMINI



BATHROOMS

Std: 3
Opt: 4 (4 CABIN VERSION)

LIVING



SALOON: U SHAPE LOUNGE WITH TABLE + DOUBLE SOFA
OPPOSITE
GALLEY: 2 PART FULL WIDTH GALLEY LOCATED
FORWARD OF SALOON
Opt: AIRCONDITIONING
DISHWASHER
WINE CELLAR
WASHER / DRYER



AMBIENCE

Std: WALNUT ALPI JOINERY
Opt: 3 GLOSS OAK ALPI JOINERY



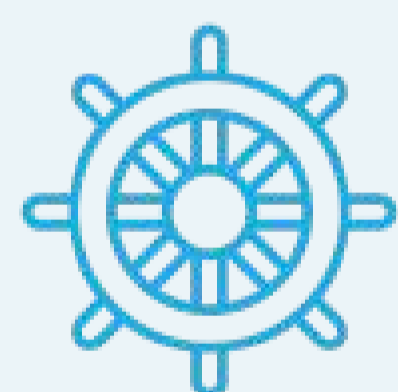
SAILPLAN

Std: IN MAST FURLING MAINSAIL + SELF TACKING JIB
Opt: CLASSIC MAST FURLER BOOM GENOA
ASSYMMETRICAL SPINNAKER / CODE 0



NAVIGATION

Std: TWIN WHEEL STEERING
Opt: RAYMARINE COASTAL PACK WITH 2 x 12" AXIOM MFD
RAYMARINE OFFSHORE PACK WITH 2 x 12" AXIOM MFD, AIS
& REMOTES



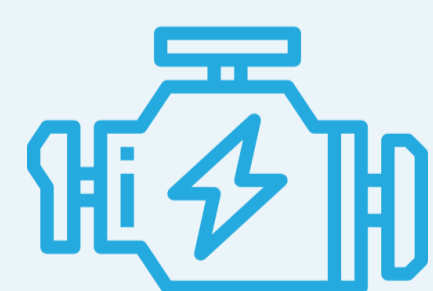
COCKPIT

Std: TWIN WHEEL STEERING STEERING CONSOLE PODS
Opt: MAINSAIL ARCH SOFT OR SEMI RIGID BIMINI LONG
COCKPIT BENCHES SPLIT TABLES SUNBEDS



TENDER SYSTEM

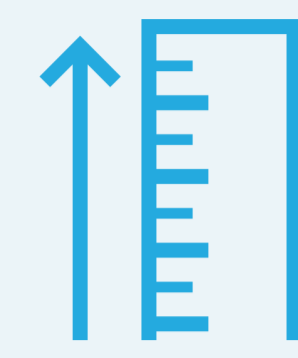
Std: TENDER GARAGE



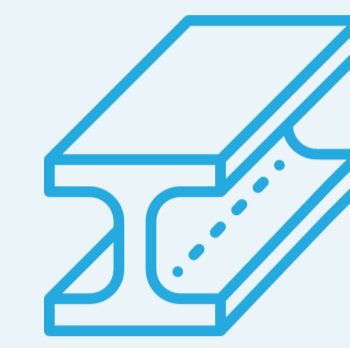
ENGINE

Std: YANMAR 15HP SHAFT DRIVE TUNNEL
BOWTHRUSTER
Opt: YANMAR 110HP SHAFT DRIVE 11Kva GENERATOR
RETRACTABLE STERN THRUSTER

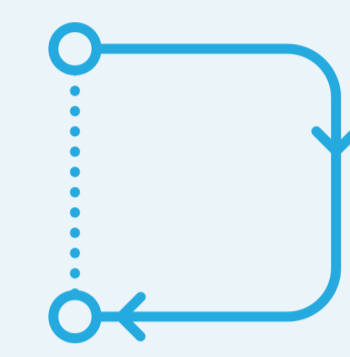
SPECIFICATIONS



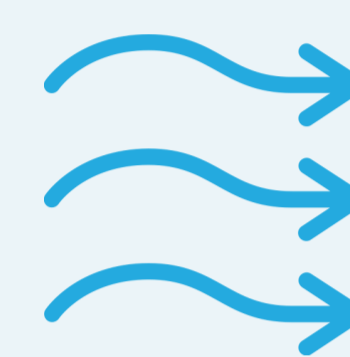
LENGTH OVERALL
62'2" / 18.95M



BEAM OVERALL
17'3" / 5.25M



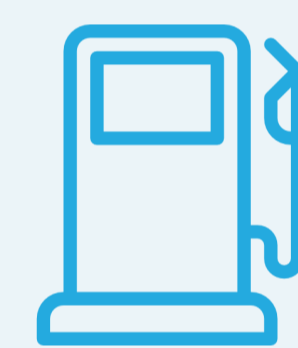
LIGHT DISPLACEMENT
21,700KG



AIR DRAUGHT MAX
STD: 80'2" / 24.44M
OPT: 86'9" / 26.44M



KEEL
STD: FIXED DEEP DRAUGHT 8'9" /
2.66M
OPT: FIXED SHALLOW DRAUGHT
7'3" / 2.20M



FUEL CAPACITY
STD: 500L



WATER CAPACITY
STD: 860L



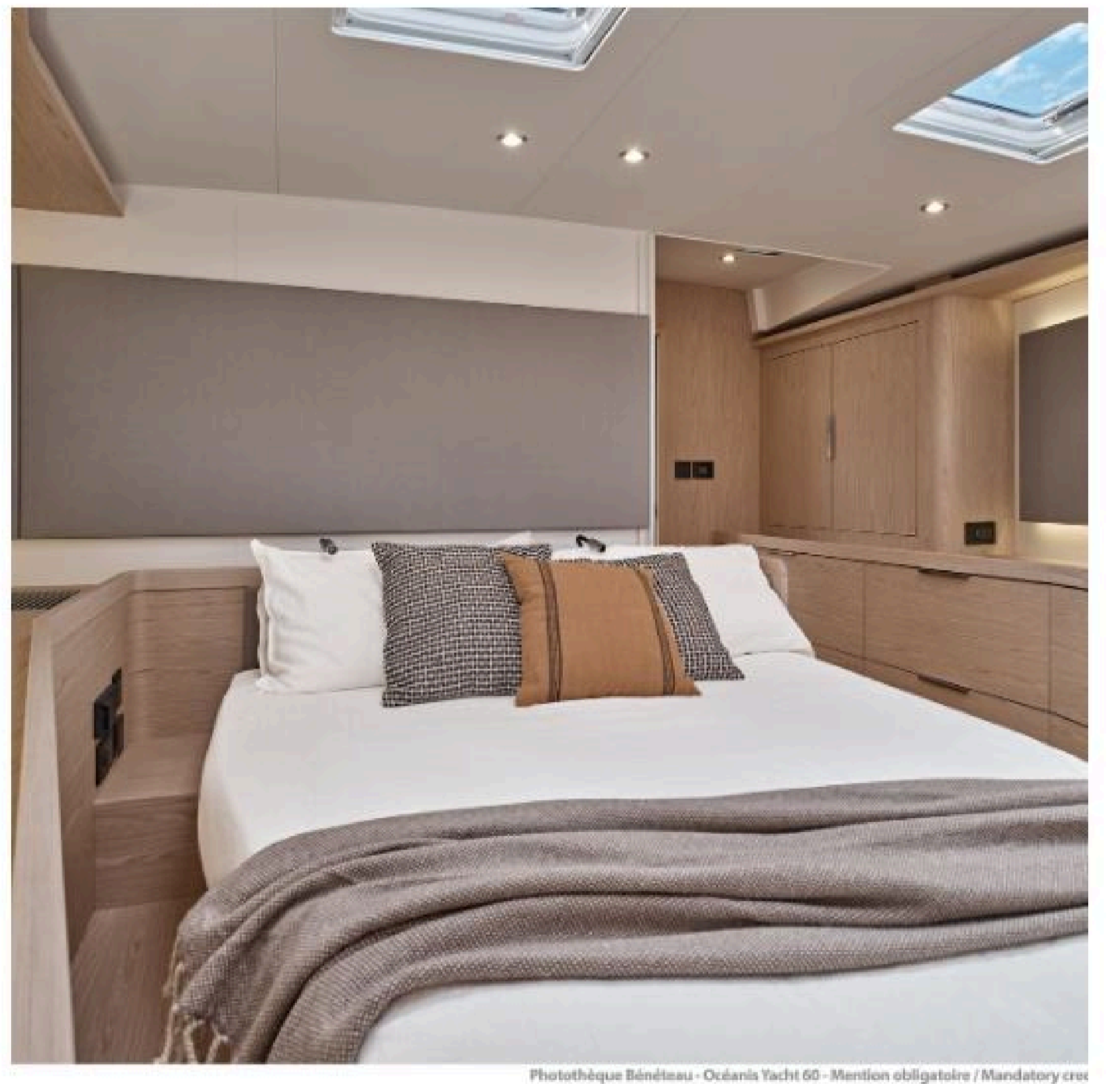
CE CERTIFICATION
A10 - B14 - C14



Photothèque Bénéteau - First 44 - Mention obligatoire / Mandatory c



Photothèque Bénéteau - Oceanis Yacht 60 - Mention obligatoire / Mandatory c



Photothèque Bénéteau - Oceanis Yacht 60 - Mention obligatoire / Mandatory c



CONTACT



1300 110 489



sales@spiritmarineqld.com



**Gold Coast, Brisbane, Sunshine Coast
The Whitsundays, Cairns/Port Douglas**

Spirit Marine Queensland Pty Ltd

www.spiritmarineqld.com

ABN: 87 615 530 928