



CASE STUDY

# UNIFIED REALTY



**Business Name:**

Unified Realty

**Location:**

171 Lutz St Moncton NB

**Challenges:**

Retrofit job. The building caught fire and we had to re-do the job twice. Sheet metal workers could not follow ¼ of the plans laid out in the project, and had to redesign on site to ensure everything would work properly.

**Equipment Installed:**

Daikin water Source VRV ducted system for entire building.

New RTU HRV

HVAC SYSTEM PACKAGE included the supply and install of the following: CU-1/CU-2: (Connected to the existing boreholes) 4x RWEQ120TATJU-HR 10-ton VRV T-series WC HR 230 (Water Source) HP-001/103/106/200/202: 5x FXSQ36TAVJU 3.0-Ton MSP Concealed Ducted Unit (C/W ductwork and control) HP-002: 1x FXSQ18TAVJU 1.5-Ton MSP Concealed Ducted Unit (C/W ductwork and control) HP-003: 1x FXSQ12TAVJU 1.0-Ton MSP Concealed Ducted Unit (C/W ductwork and control) HP-004: 1x FXSQ09TAVJU 0.75-Ton MSP Concealed Ducted Unit (C/W ductwork and control) HP-101/205b 2x FXZQ12MVJU9 1.0-Ton 2' x 2' 4-Way Ceiling Cassette (C/W control) HP-102: 10x FXZQ05TAVJU 0.5-Ton VISTA 2x2 Cassette Unit (C/W control) HP-104/201/204 3x FXSQ24TAVJU 2.0-Ton MSP Concealed Ducted Unit (C/W ductwork and control) HP-105/203/205a: 3x FXSQ48TAVJU 4.0-Ton MSP Concealed Ducted Unit (C/W ductwork and control)

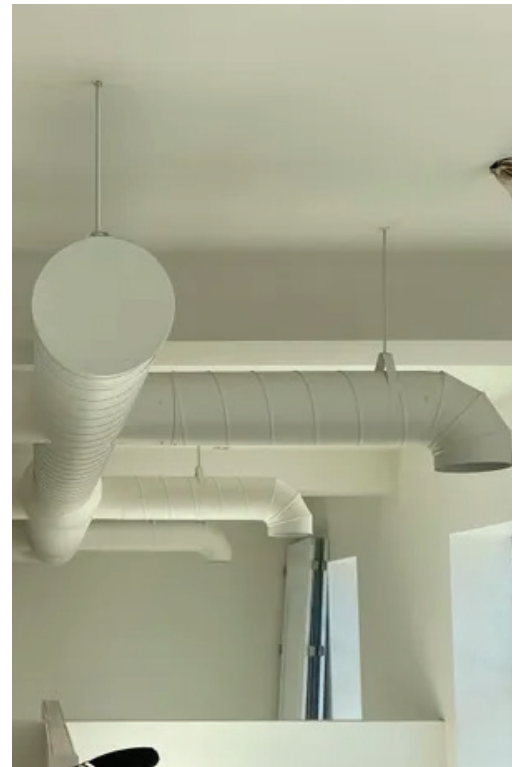
HRV-1(RTU): 1x Lifebreath 2000EFD HRV, 1730CFM @ 1" wg, 240/1/60, 99-BC02 (C/W EC-1, ductwork and control) HRV-2: (Will re-use existing ductwork and louvers) 1x Lifebreath 700FD HRV, 600CFM @ 0.5" wg, 120/1/60, 99-BC02 control. (C/W EC-2, ductwork and control) All supply & return grills, diffuser, damper, fire dampers (37) and branch boxes (5) All Materials and labour for the work.

**Result:**

On site redesign quickly addressed any issues in the sheet metal plan, and everything went pretty smoothly overall. New and improved geothermal system for the client.



©2025 Greenfoot Energy Solutions. All rights reserved.



©2025 Greenfoot Energy Solutions. All rights reserved.

**ENERGY EFFICIENCY MADE EASY**

**1-800-380-YETI (9384)** [greenfootenergy.ca](https://greenfootenergy.ca)