



System Data Sheet & Specifications

LITEFLAM

FIRE-RATED SKYLIGHTS & GLASS FLOORS
WALKABLE FIRE-RATED GLAZING SYSTEM WITH 1-2 HOURS PROTECTION

www.greenliteglass.com | info@greenliteglass.com | +1 (877) 708-2151

LITEFLAM® XT 60 minute

Multi-panel IGU system

PRODUCT FEATURES

This advanced floor system is impact resistant and fire rated for 60 minutes. **LITEFLAM XT 60** is a patented insulated glass floor assembly developed for interior glass floors and exterior skylights.

Engineered to meet ASTM E 2751 for design / performance of supported laminated glass, high volume foot traffic and extreme loading.

Units installed from above for safe easy installation.

Options include: sacrificial sheet, durable non-slip surfaces, Low E coatings, factory glazed units with sealed Air - spaces.

SPECIFICATIONS

Fire rating: 60 Minutes

US/Canadian Fire Rating Testing: ASTM E 119, UL 263, NFPA 251, CAN ULC-S101

Impact Safety Rating: CPSC 16 1201 (CATEGORIES I & II)

Tested Slip Resistance: ASTM C 1028 / UL 410

Nominal Glass Thickness (in.; mm): 2- 3/4" (70 mm)

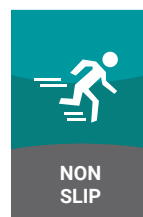
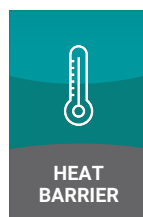
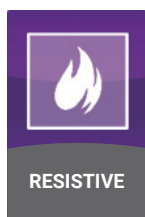
Thickness Tolerance (in.;mm): +1/8" to -1/16" (+3mm to -1.5mm)

Weight (lbs./sqft.; kg/sqm): 26 (11.7)

Minimum Live loading 100 PSF: Optional higher loading available

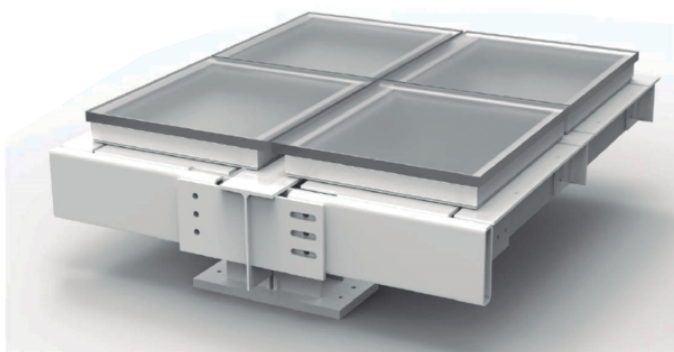
STC: 52.0 dB

Glass Only SHGC: 0.24



MAXIMUM DIMENSIONS

Rating	Application	Max Area of Glass (Sq. In.)	Max Width of Glass	Installation
60 Minutes	Horizontal	3481"	88 1/2"	Please request installation details



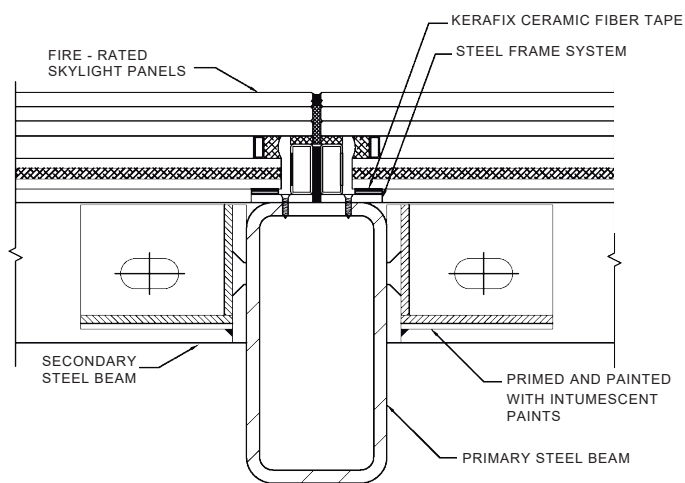
SAFETY CERTIFICATIONS:



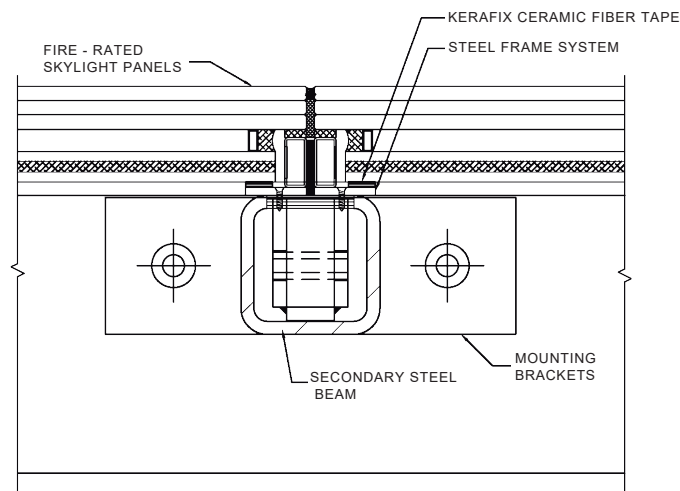
LITEFLAM® XT 60 minute

Multi-panel IGU system

STANDARD DETAILS:



PRIMARY BEAM CONNECTION



SECONDARY BEAM CONNECTION

OPTIONAL SACRIFICIAL SHEET DETAIL:

