



## System Data Sheet & Specifications

### **LITEFLOOR**

NON-FIRE-RATED SKYLIGHTS & GLASS FLOORS  
LAMINATED GLASS WITH OPTIONAL SLIP RESISTANCE

[www.greenliteglass.com](http://www.greenliteglass.com) | [info@greenliteglass.com](mailto:info@greenliteglass.com) | +1 (877) 708-2151



# LITEFLOOR® IGU SYSTEM

## PRODUCT FEATURES

LITEFLOOR is a walkable laminated safety glass with optional slip-resistant properties and/or structural integrity.

Depending on the requirements of the application there are two types (LITEFLOOR R and CL) and various compositions available.

Engineered to meet ASTM E2751 for Design Performance of Supported Laminated Glass, high volume foot traffic and extreme loading.

Units installed from above for safe easy installation.

Options include: sacrificial sheet, durable non-slip surfaces, Low E coatings, factory glazed units with sealed Air - spaces.

## SPECIFICATIONS

**Impact Safety Rating:** CPSC 16 1201 (CATEGORIES I & II)

**Tested Slip Resistance:** ASTM F1679-00/ ANSI A326.3

**Nominal Glass Thickness (in.; mm):**

Double Glazed: 2-3/4" (70 mm)

Triple Glazed: 3-1/8" (80 mm)

**Thickness Tolerance (in.;mm):** +1/8" to -1/16" (+3mm to -1.5mm)

**Weight (lbs./sqft. ;kg/m )**

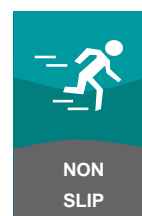
Double Glazed: 21lbs/sqft; 102 kg/sqm

Triple Glazed: 23-25 lbs/ sqft; 112- 122 kg/sqm

**Standard Live loading 100 PSF:** Optional higher loading available

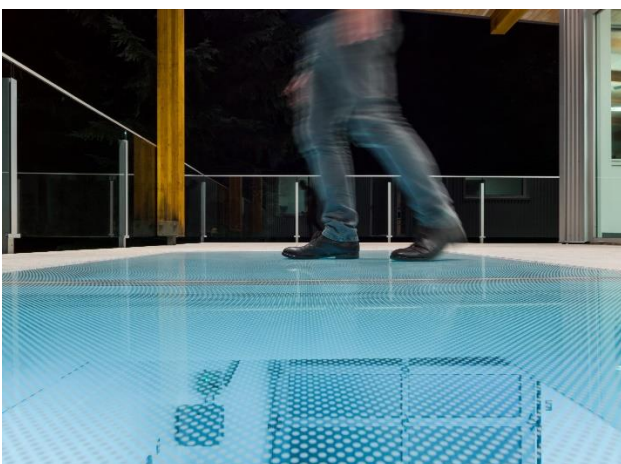
**SHGC:** 0.30 with standard clear interlayer.

\*Higher energy performance available.



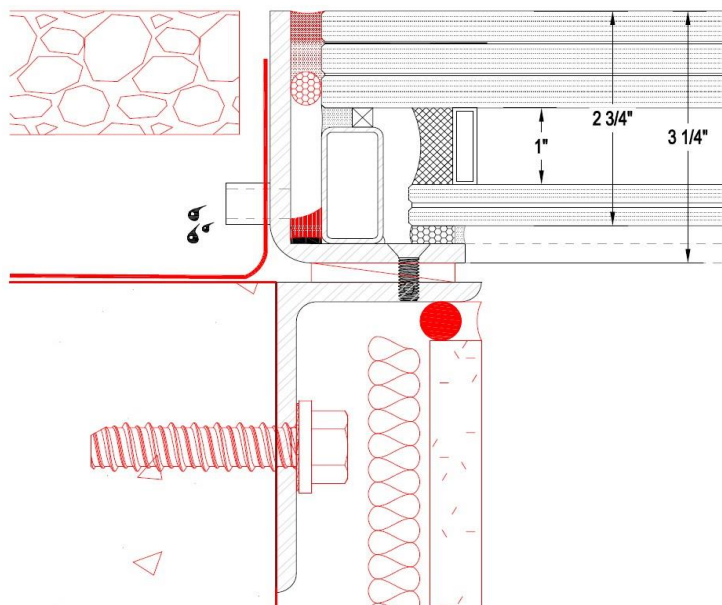
## MAXIMUM DIMENSIONS

Application	Max Weight of Glass (lbs)	Max Width of Glass	Max Length of Glass	Installation
Horizontal	5500	236"	130"	Please request installation details



## STANDARD DETAILS:

### DOUBLE GLAZED FACE MOUNT

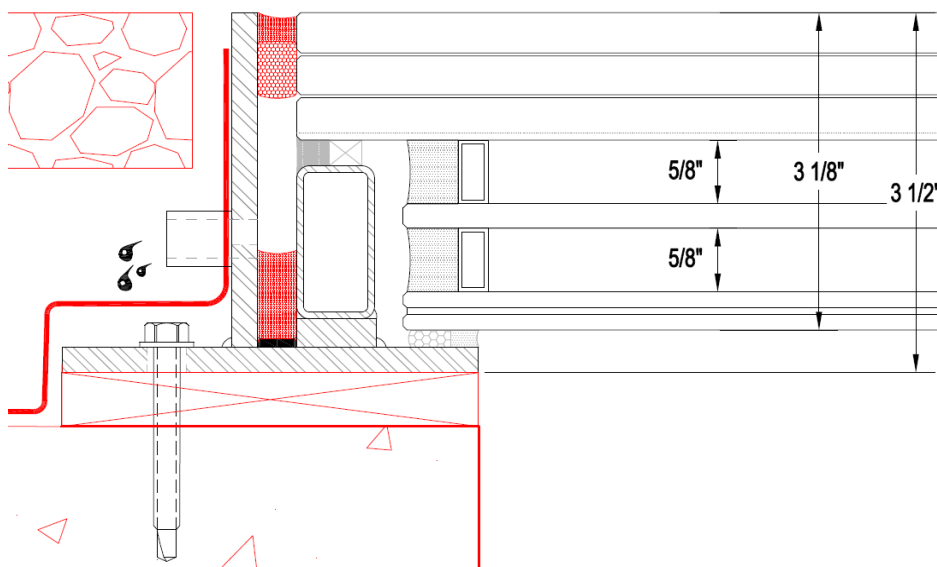


STRUCTURAL GLASS

1" AIR SPACE

LAMINATED GLASS

### TRIPLE GLAZED TOP CURB MOUNT



STRUCTURAL GLASS

5/8" AIR SPACE

LAMINATED GLASS

5/8" AIR SPACE

LAMINATED GLASS

ASK ABOUT OUR OPTIONAL SACRIFICIAL SHEET