

# WELCOME TO THE ARK!



## Floor Plans Overview

The following pages provide a detailed look at the layout of the Ark on Lake Lanier. These plans are designed to help you visualize room locations, shared spaces, and the overall flow of the estate as you plan your stay—whether you’re gathering family or hosting a retreat.

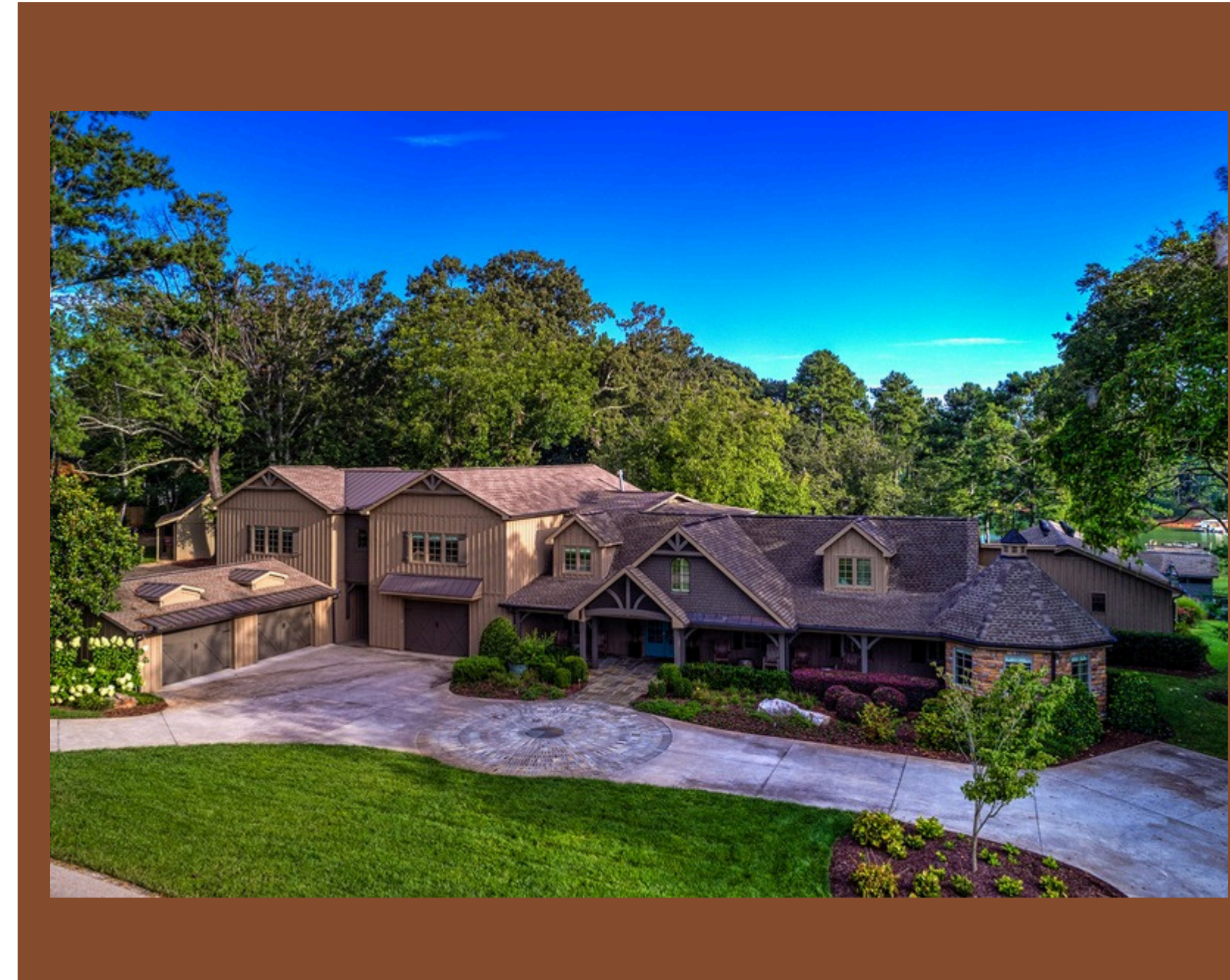
### Property Highlights

- 12,000-square-foot estate
- Situated on five private acres
- 15 bedrooms | 14 bathrooms
- Main house features 11 bedrooms
- Three additional cabins located throughout the property

### The big picture

There is no single “right” way to use the Ark. The value of the property is its ability to adapt to your group, not force your group into a preset mold.

This overview is simply here to help you think through the possibilities and design a stay that fits your people, your priorities, and your purpose.



*“Every space at the Ark serves a purpose — and more than one possibility.”*

*Please note: furnishings and room uses may evolve as we continue to enhance the Ark. These floor plans are intended as a helpful planning guide.*

## SLEEPING CONFIGURATIONS & ROOM LAYOUT (SUMMARY)

Our floor plans show the physical layout of the Ark and how sleeping spaces are distributed across the property. Before diving into the drawings, it's helpful to know that fitting a group into **The Ark is less about a single number and more like working a puzzle.**

The property includes a mix of king and queen rooms, bunk rooms, and rooms with multiple twins. This flexibility allows groups to design their stay around who is coming, how private they want the experience to feel, and how they prefer to sleep. Many rooms can be arranged or used in more than one way, and the same floor plan can support very different group dynamics.

### **If privacy is the top priority...**

Many executive retreats and couples-focused gatherings use The Ark in a low-density, high-privacy way. In this style of stay:

- Each individual or couple uses their own private sleeping space
- Each sleeping space has a dedicated bathroom
- No bedrooms, sleeping spaces, or bathrooms are shared
- Some sleeping spaces are traditional bedrooms, while others are purpose-designed private rooms

Groups using the Ark this way prioritize private sleeping spaces, using the property in a way that allows guests to spread out comfortably.

### **This approach is commonly used for:**

- Executive off-sites and leadership retreats
- Board meetings and strategy sessions
- Couples gatherings and masterminds

**Typical scale: 12 individual executives or couples**

### **If everyone wants their own room, but shared bathrooms are acceptable...**

Some groups care most about having private sleeping spaces, but are comfortable sharing bathrooms. In this approach:

- Each guest or couple still has a private sleeping space
- Bathrooms may be shared
- Guests may choose private-use bunk rooms rather than traditional bedrooms
- Sleeping spaces are used privately, not communally

Because many rooms include multiple beds or bunks, this configuration allows groups to maintain privacy while using the house more efficiently.

### **This works well for:**

- Leadership teams
- Adult group trips
- Multi-family stays

**Typical scale: 16 private sleeping spaces for executives or couples**

*"However your group decides to come together, the Ark makes room for it."*

### If your group is more social and comfortable sharing rooms...

Weddings, family reunions, and mixed-age groups often use the Ark in a more shared, communal way. In this case:

- Bedrooms and bathrooms are shared
- Each guest has their own bed
- Bunk rooms and twin-heavy rooms are used as intended
- No beds are shared

This is where the “puzzle” aspect really comes into play. With multiple bunk rooms and rooms that include several twins, groups can mix adults, kids, and couples in ways that feel natural for them.

#### Groups typically land in a range:

- **38 guests** using all standard beds (including bunks, excluding sleeper sofas)
- **41 guests** when sleeper sofas are also used, while still avoiding bed sharing

This is the most common way families and wedding groups experience the property.

#### Sleeping Arrangements at a Glance

The Ark offers a diverse mix of sleeping options designed to support a wide range of group sizes and configurations: There are:

- 9 King beds
- 3 Queen beds and 1 Queen Murphy Bed
- 3 Full beds
- 25 Twin beds
- 3 Sofa sleepers

In select situations, a limited number of folding twin cots and inflatables may also be available to help accommodate specific group needs.

### If maximizing capacity is the goal...

For large reunions or group events where headcount matters most, the Ark is used at higher density. In this scenario:

- Bedrooms and bathrooms are shared
- Beds may be shared
- Bunk rooms and twin beds are fully utilized

#### With one head on every pillow:

- **57 guests** excluding sleeper sofas
- **63 guests** including sleeper sofas

This approach is typically chosen when bringing everyone together in one place matters more than privacy.

*“The Ark isn’t one layout — it’s many possibilities under one roof.”*

#### About nearby lodging & overflow options

Some groups—especially executive retreats and larger events—choose to combine The Ark with nearby off-site lodging to increase privacy while still gathering together.

A nearby home, Pine Haven Lake House, located just a few doors down, is often rented alongside the Ark and can accommodate additional executives or couples in private rooms. Hotel options are also available 10–15 minutes away in town.

In these cases, the Ark remains the main campus—the place where everyone meets, eats, works, and spends time together—while some guests simply sleep off-site at night.

# The Main Deck



**4 BEDROOMS**  
(Includes Queen Murphy in office)

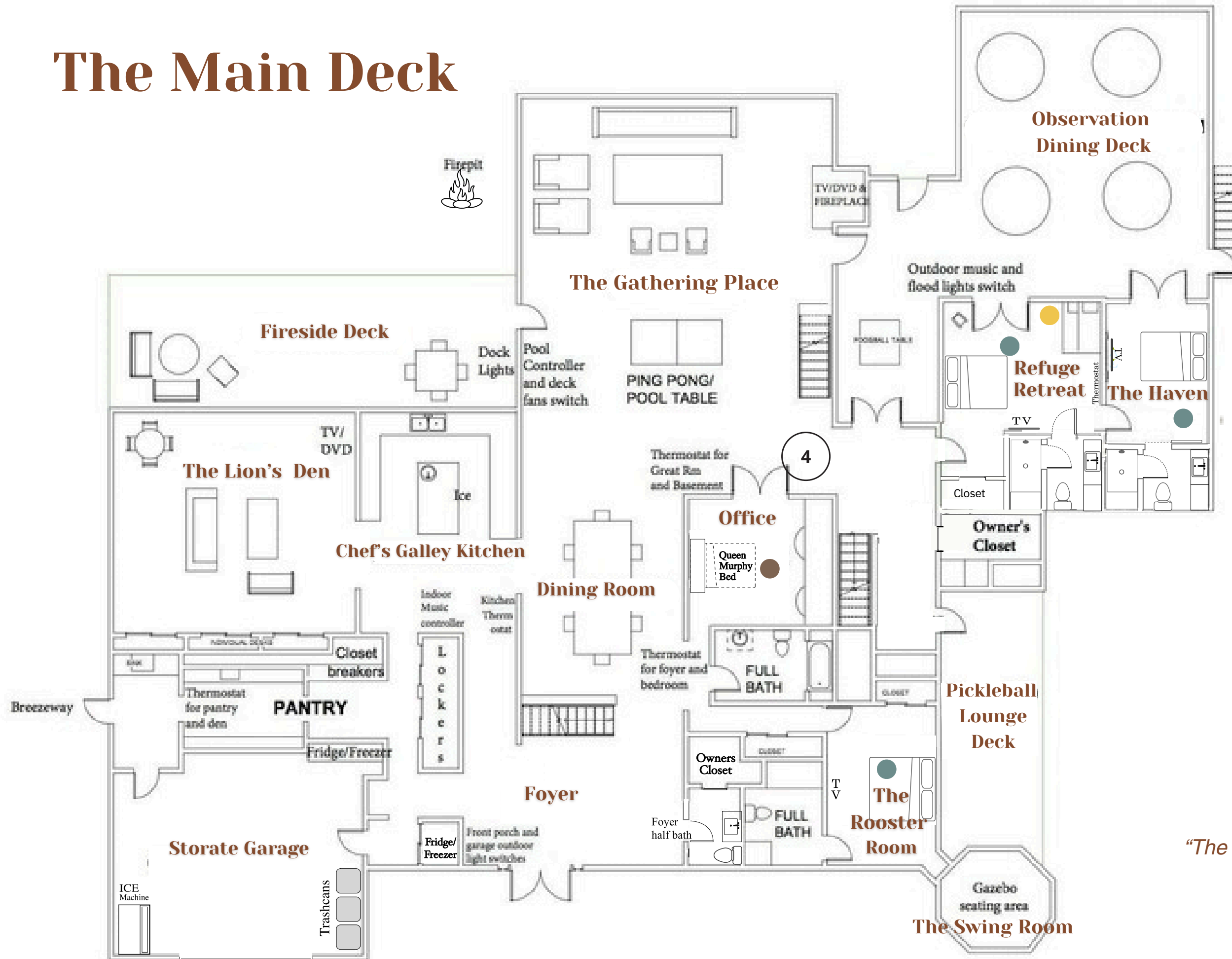
**4 BATHROOMS**

Sleeps 11

- **The Rooster Room** King En Suite (2) w/TV
- **The Haven Room** King En Suite (2) w/TV
- **The Refuge Retreat** King En Suite with Twin/Full Bunk(5) w/TV
- **Office** w/ Queen Murphy Bed (2)

All bedrooms on this level are fully wheelchair-accessible and intentionally designed to support guests with mobility and accessibility needs.

*"The Ark was designed for comfort and built to gather."*

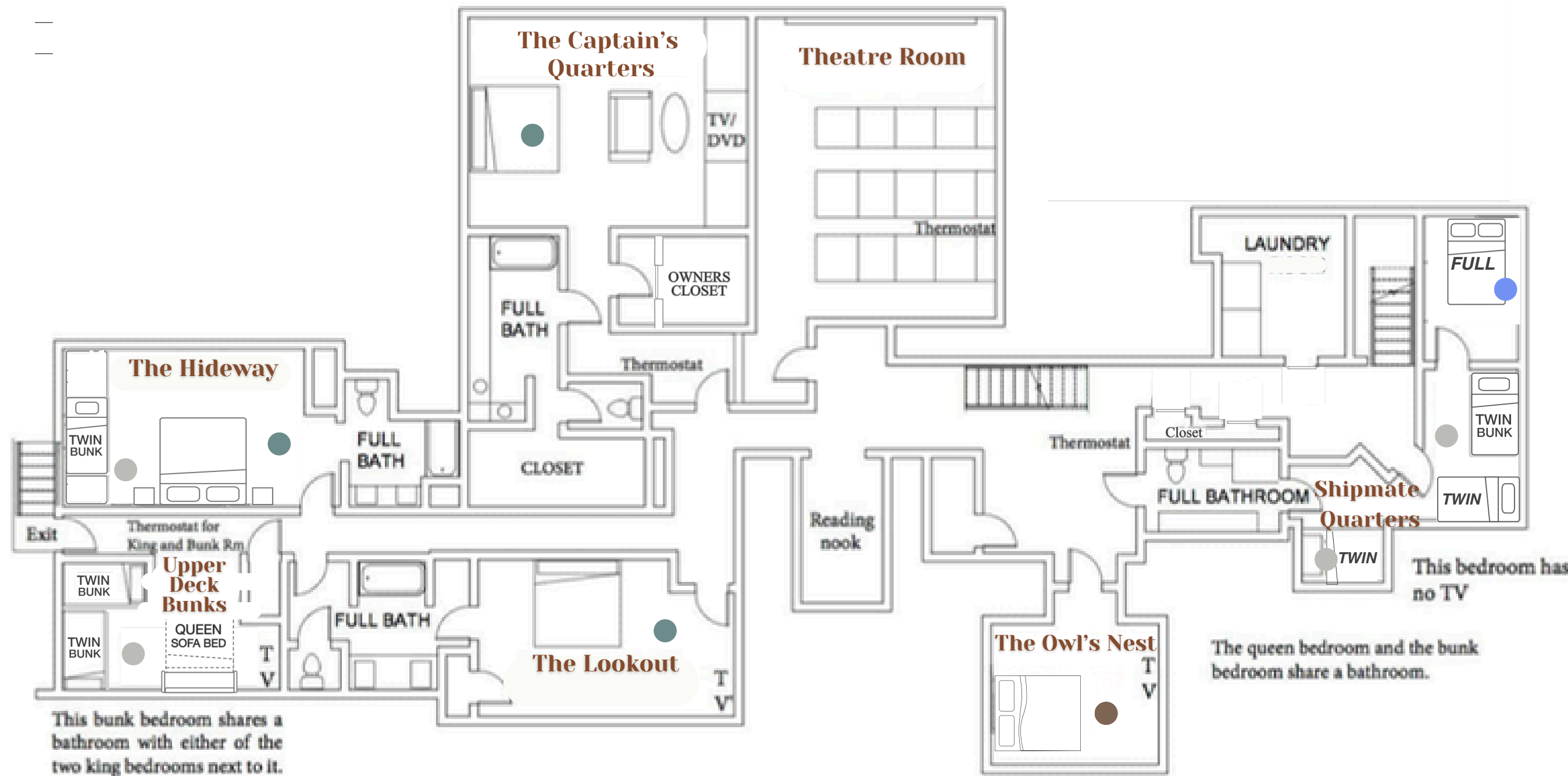


# The Upper Deck

**6 BEDROOMS**

**4 BATHROOMS**

Sleeps 20  
(Sleeps 22 with queen sofa bed)



- **The Hideaway** King En Suite (2) with two twin beds w/TV
- **The Captain's Quarters** King En Suite (2) w/TV
- **The Lookout** King En Suite (4) with twin bunk w/TV
- **The Owl's Nest** Queen bed(2) w/TV
- **Upper Deck Bunks** (6) with Two twin bunks and a queen sofa bed w/TV
- **Shipmate Quarters** (6) with 4 twins and Full size bed

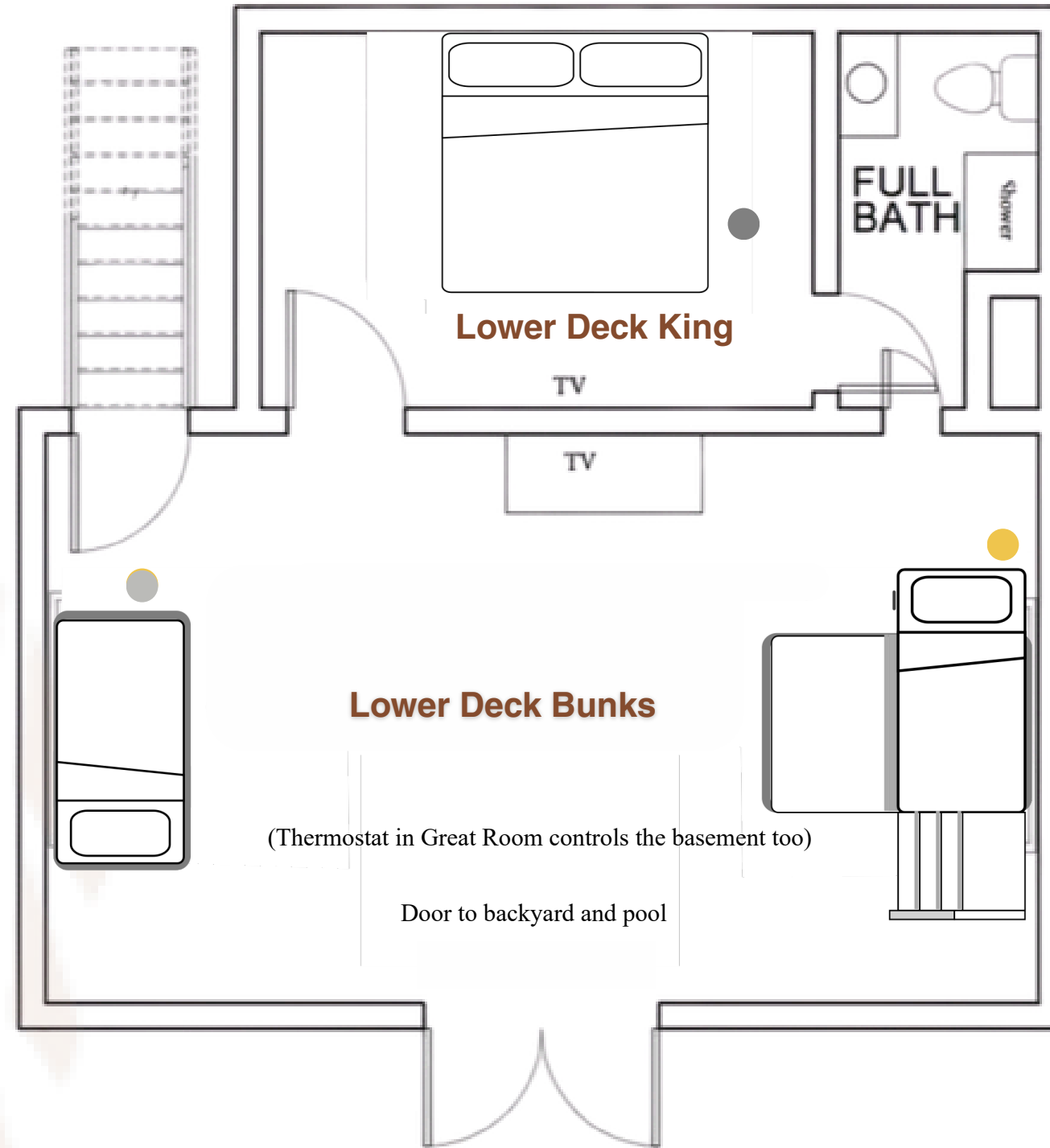
This bunk bedroom shares a bathroom with either of the two king bedrooms next to it.

The queen bedroom and the bunk bedroom share a bathroom.

*It's not about fitting into the Ark's floor plan — it's about the floor plan fitting you."*



# The Lower Deck



**2 BEDROOMS**

**1 BATHROOMS**

Sleeps 7

**Lower Deck King**

● King En Suite (2) w/TV

**Lower Deck Bunks**

● Twin Bunks Room (2) and

● Twin/Full Bunk (3) w/TV

*Both rooms share the Jack n Jill bathroom.*

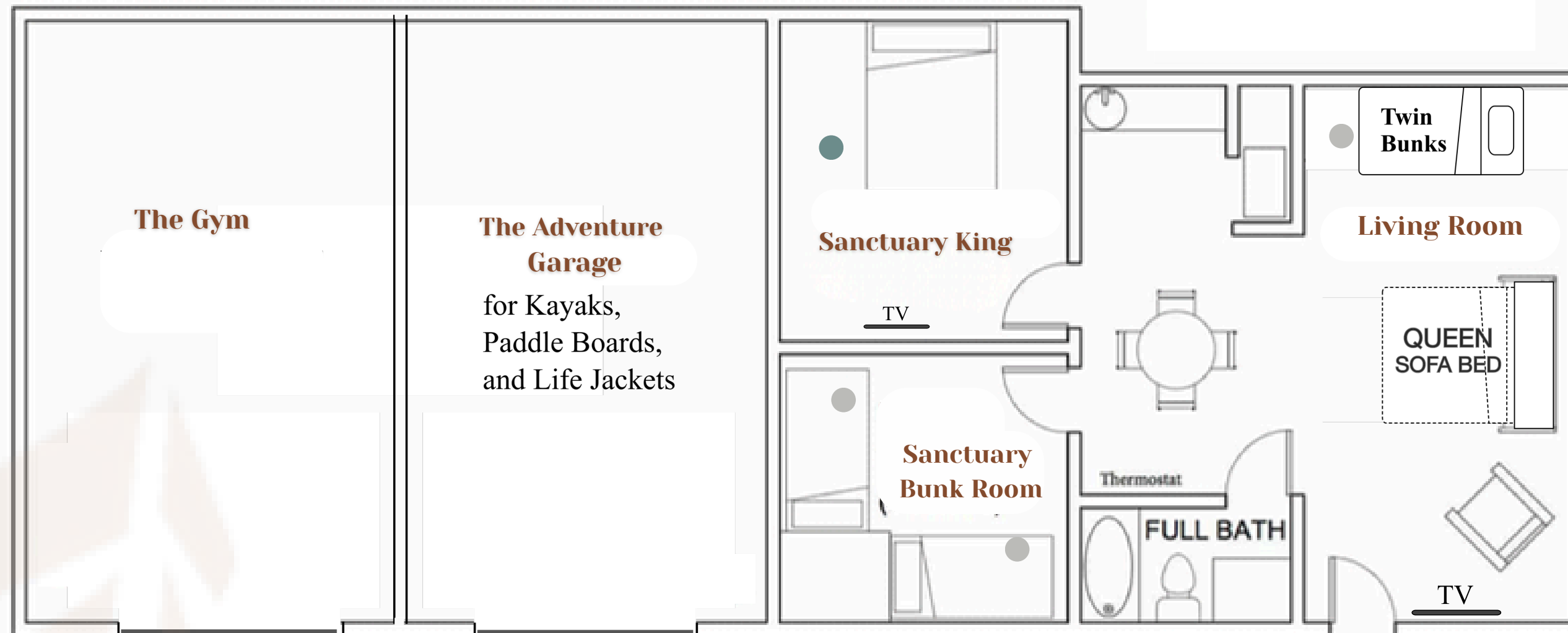
*“At the Ark, there’s a place for everyone — and room to make it your own.”  
“At the Ark, there’s a place for everyone — and room to make it your own.”*

# The Sanctuary

**2 BEDROOMS**

**1 BATHROOM**

Sleeps 8  
(Sleeps 10 with queen sofa bed)



- **Sanctuary King** w/TV
- **Sanctuary Bunk** w (4) Twins
- Living Room (4) with Queen Sofa Bed/Twin Bunks w/TV

*"The Ark is thoughtfully designed so your group can focus less on logistics and more on enjoying their Ark experience."*

# Kathy's Stable

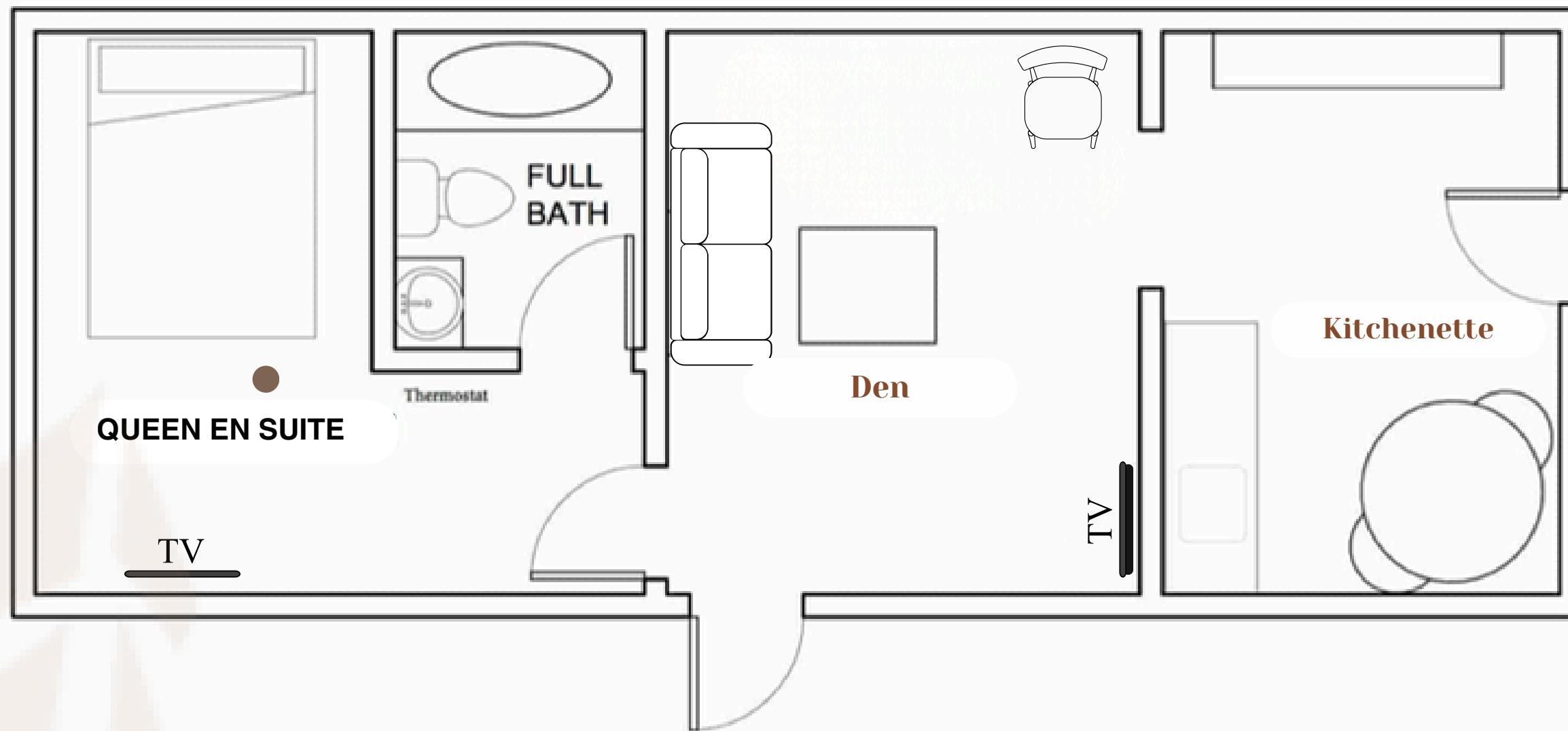


**1 BEDROOMS**

**1 BATHROOM**

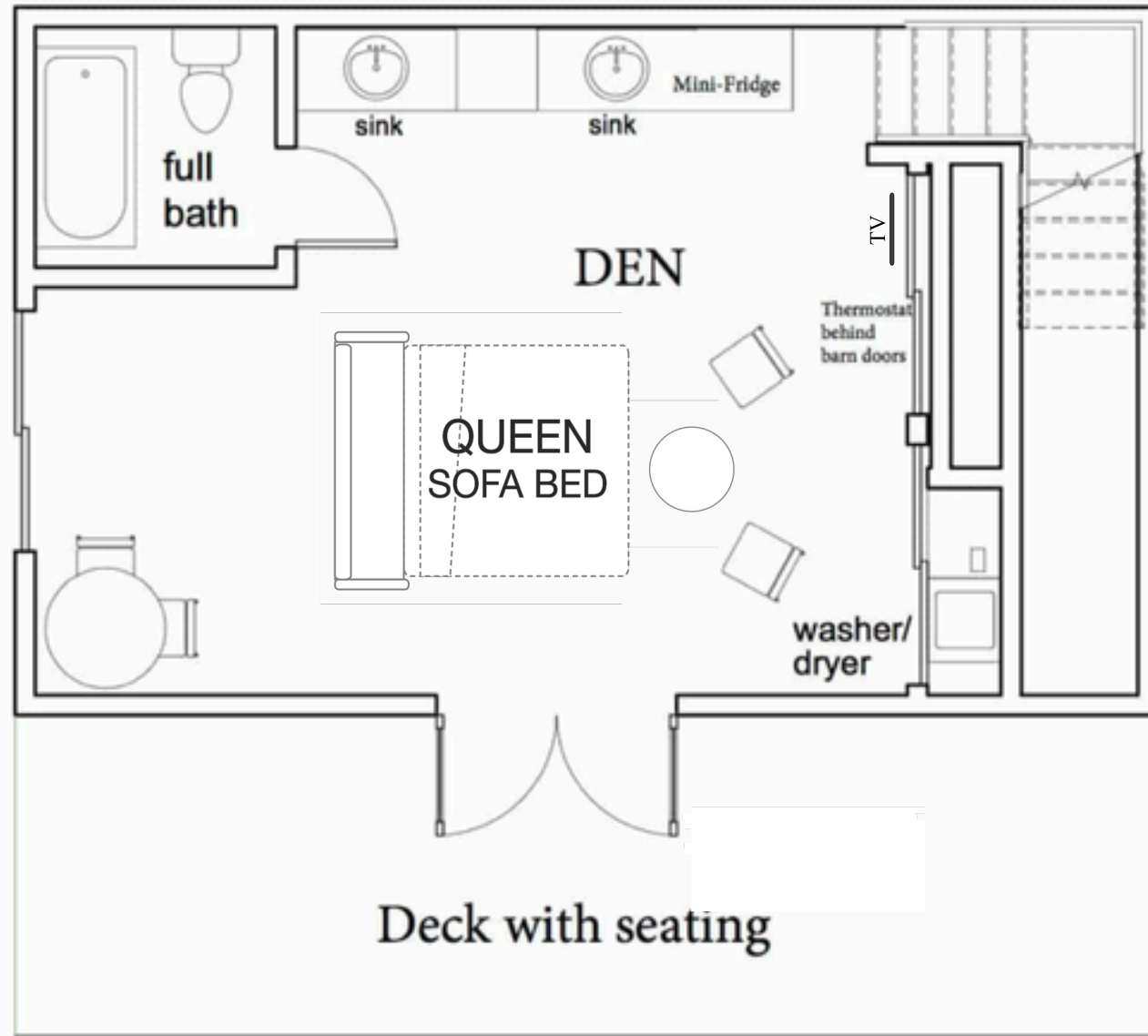
Sleeps 2

● Queen En Suite (2) w/TV



*The Ark was built for the way your group gathers—and the memories that follow.*

## MAIN FLOOR



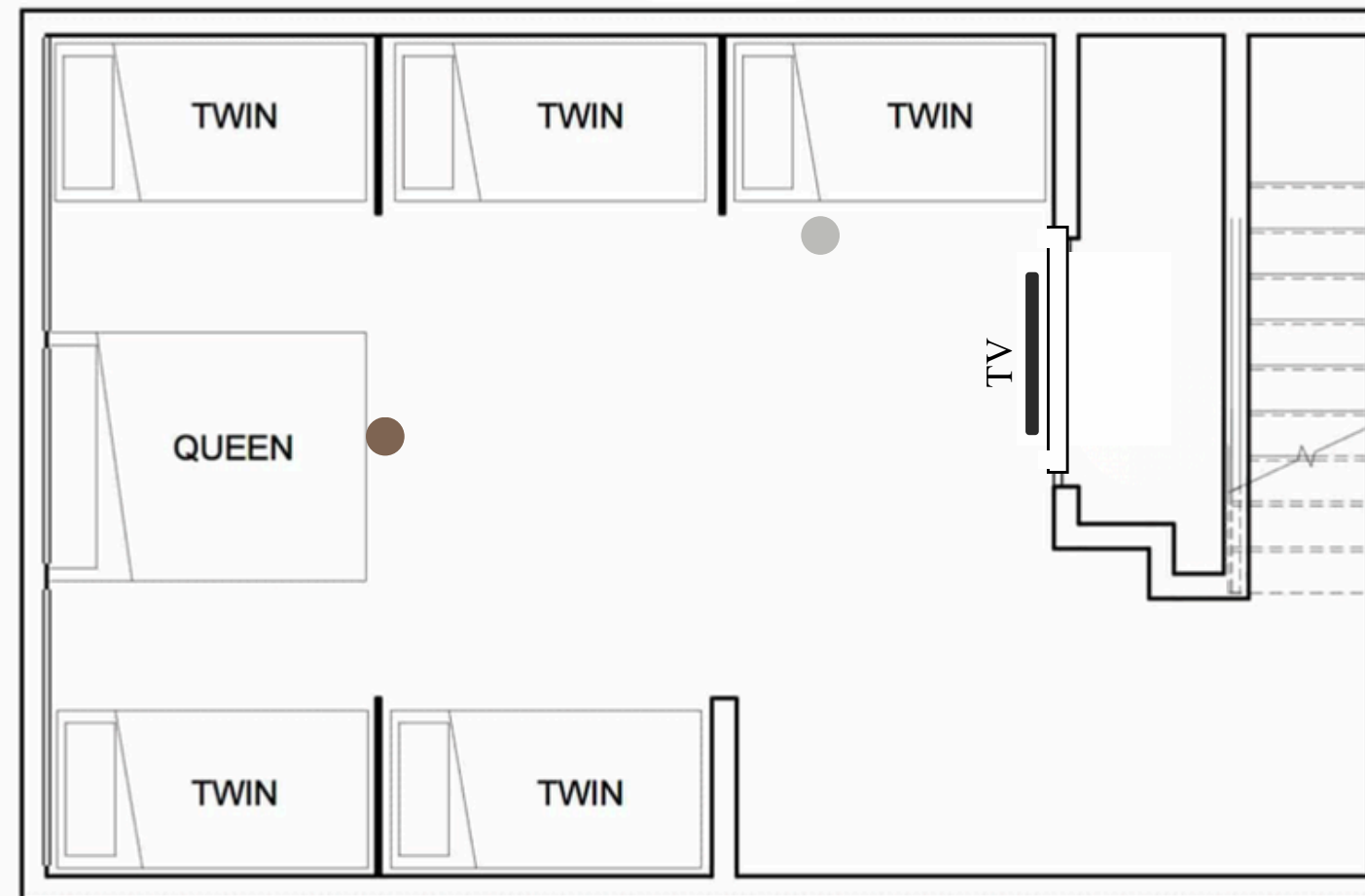
# The Barn Retreat

### 1 BATHROOM

Sleeps 2

Queen Sofa Bed (2) w/TV

## UPSTAIRS



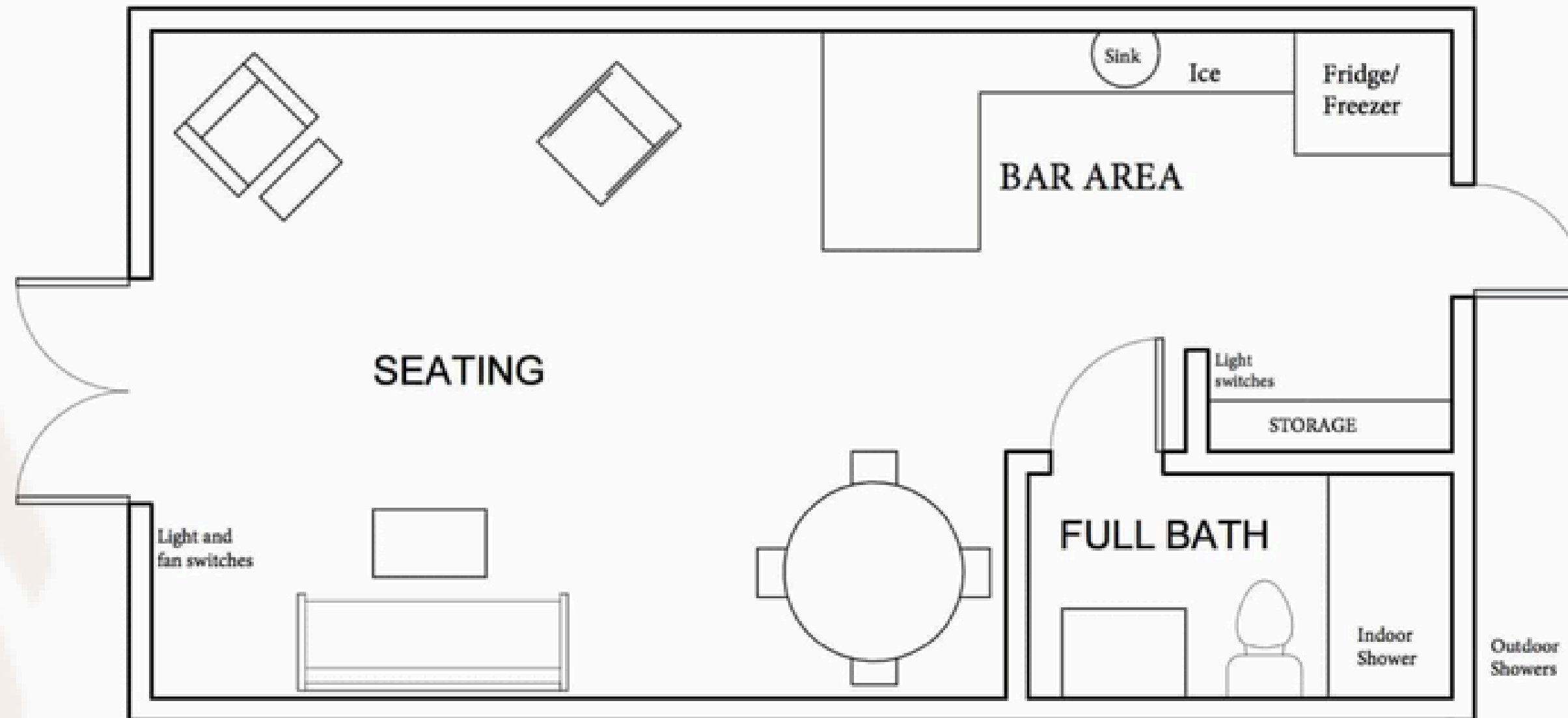
### 1 BEDROOM

Sleeps 7

- Queen Bed (2) With
- Twin Beds (5)w/TV

*"More than a layout, the Ark creates an experience your group can settle into."*

# Poolside Lounge



**1 BATH**

*"At the Ark, the floor plan works quietly in the background — so your group can rest easy during their stay."*