

## Unlock Geometry Readiness Test

**1)** Find the equation of a line that passes through the points (3,1) and (9,19)

**2)** Solve the inequality

$$-\frac{x}{5} - 4 \leq 8$$

**3)** Sketch the solution to the following inequality

$$y < \frac{5}{3}x - 3$$

**4)** Simplify the following expression

$$\frac{(x^8 y^{12})^{1/4}}{2y^2}$$

**5)** The exponential growth of a culture of bacteria can be represented by the function

$$a = 8000(1.5)^t$$

Where  $a$  is the population and  $t$  is the time in hours. How much did the population grow by between 2 and 5 hours?

**6)** Multiply the two binomials

$$(x^2 + 3x)(6x - 2)$$

**7)** Factor the trinomial

$$3x^2 + 19x + 6$$

**8)** Sketch the graph of the quadratic equation

$$y = (x - 1)^2 - 4$$

**9)** Find the roots of the quadratic equation, rounded to 2 decimal places

$$y = x^2 + 3x - 9$$

**10)** Multiply and simplify the rational expressions

$$\frac{(x-8)(5x+8)}{x^2-9x+8} \cdot \frac{x^2+2x-3}{x^2-9}$$

**11)** Solve the rational equation

$$\frac{3}{x-3} = \frac{4}{x-7}$$

**12)** Simplify the radical expression

$$(4 + \sqrt{2})(5 + \sqrt{2})$$

**13)** Solve the radical equation, assuming the principal root is being used

$$\sqrt{2x+24} = x$$

**14)** What is the range of the following function?

$$y = x^2 + 5$$

**15)** Sketch the quadratic function

$$y = -2\left(\frac{1}{3}x - 2\right)^2 + 5$$

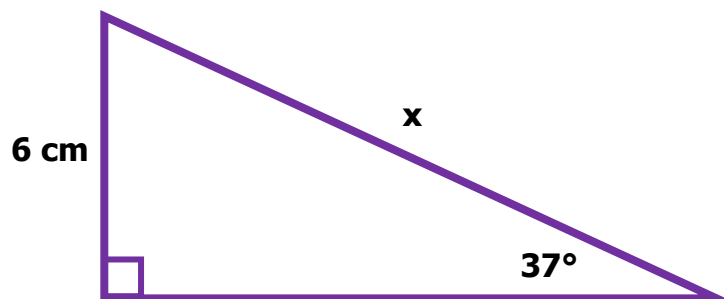
**16)** Solve the system of linear equations for  $x$  and  $y$

$$x + 6y = 24$$

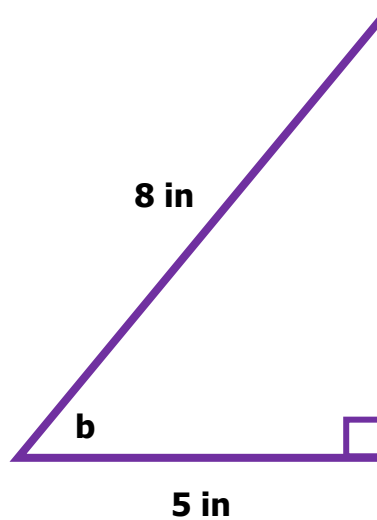
$$4x - 8y = 0$$

**17)** Katelyn finds 26 coins worth a total of \$4.85 in her purse. Assuming she only has quarters and dimes, how many of each coin does she have?

**18)** Find the length of side  $x$  in the triangle below (rounded to the nearest tenth)



**19)** Find the measure of angle **b** in the triangle below (rounded to the nearest whole number)



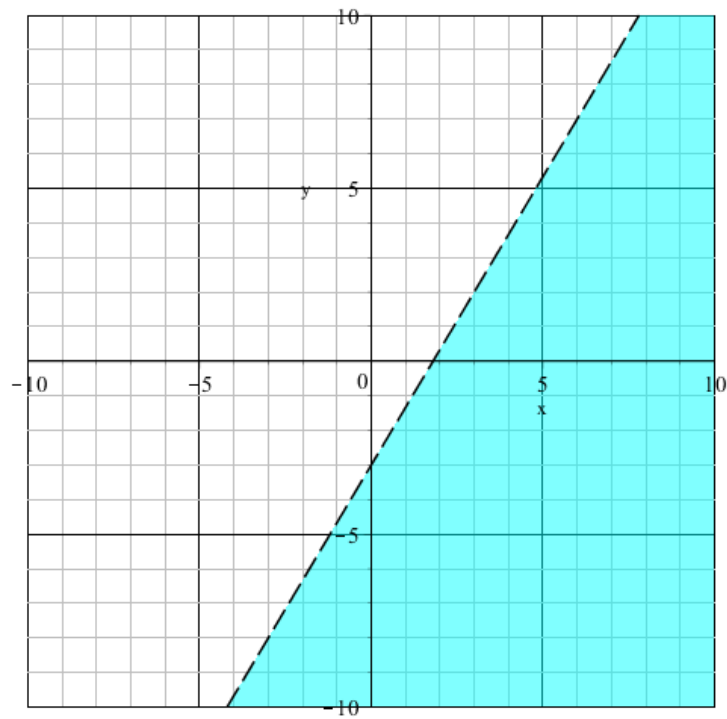
**20)** Mike rolls two six-sided dice at the same time. What is the probability that he rolls a 3 on one die and an even number on the other?

## Unlock Geometry Readiness Test Answer Key

1)  $y = 3x - 8$

2)  $x \geq -60$

3)



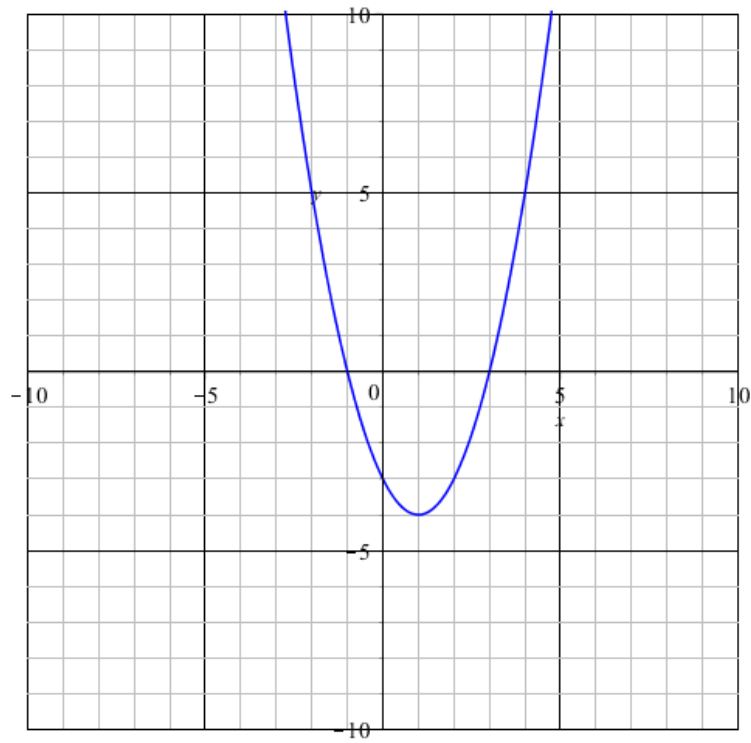
4)  $\frac{x^2 y}{2}$

5) 42,750

6)  $6x^3 + 16x^2 - 6x$

7)  $(3x + 1)(x + 6)$

**8)**



**9)**  $x = -4.85, 1.85$

**10)**  $\frac{5x + 8}{x - 3}$

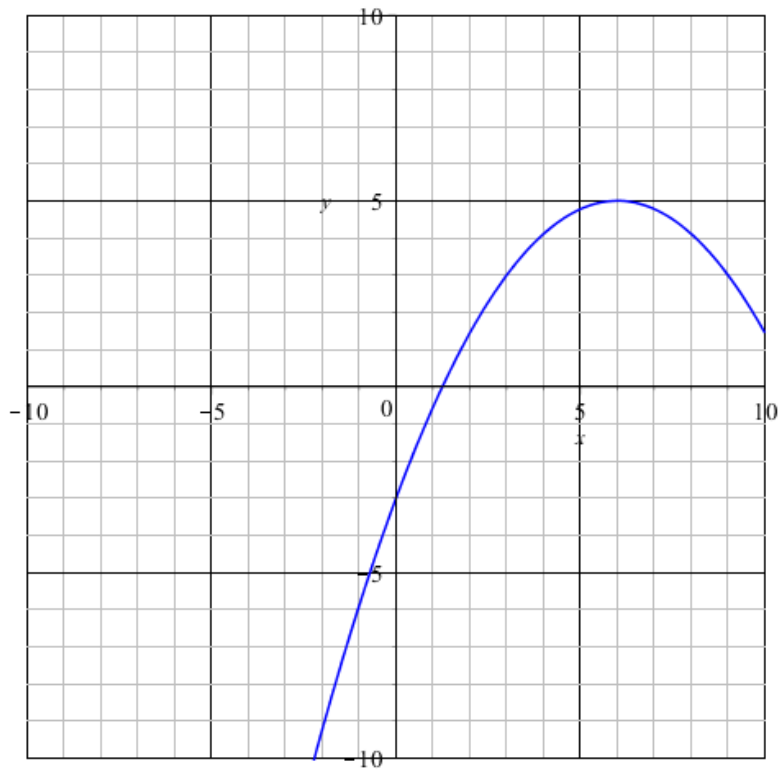
**11)**  $x = -9$

**12)**  $22 + 9\sqrt{2}$

**13)**  $x = 6$

**14)**  $\{y \in \mathbb{R} \mid y \geq 5\}$

**15)**



**16)**  $x = 6, y = 3$

**17)** 15 quarters, 11 dimes

**18)** 10 cm

**19)**  $51^\circ$

**20)**  $\frac{1}{12}$

Students with 16 or more questions correct are ready for Unlock Geometry.