

KELTON MeterManager™

Server Installation Manual

This document is the Installation guide for KELTON Fiscal Metering Management Package (KELTON MeterManager)

Kelton Engineering Ltd
Registered in Scotland No: 129648
Registered Office: The Capitol, 431 Union Street,
Suite 405, Aberdeen, AB11 6DA, United Kingdom

support@kelton.co.uk
t: +44 (0) 1224 630 000
www.kelton.co.uk





Contents

1	Revision Control.....	3
2	Introduction.....	4
3	KELTON MeterManager Server Installation.....	5
4	Multiple KELTON MeterManager Services on the Same KELTON MeterManager Server Computer.....	9
5	Automatically Starting KELTON MeterManager Servers (Local Installations Only).....	12

1 Revision Control

Rev	Issue date	Description	Prepared	Approved
1	May 2013	Initial release	IB	MH
1.1	Aug 2016	Updated to reflect SQL 2008 obsolescence	MH	MH
1.2	Sept 2016	Reformatted	INB	JON
1.3	Nov 2017	Reformatted	KW	JON
1.4	Jul 2018	Updated branding applied	WM	JS
1.5	Sept 2020	Updated 1.8.1	WM	JM
1.6	April 2021	Updated 1.8.2	RJS	JM
1.7	May 2023	Updated for 2.1.0	AN	DL
2.3.1	Feb 2026	Reformatted and updated as per release, new branding applied	AN	DL

2 Introduction

This document outlines the steps required to install the following KELTON Software Application: KELTON MeterManager Server V1.8.5 (or higher).

Hardware Specification

The minimum recommended specification a personal computer (PC) for installing KELTON Meter Manager Software Applications is:

Processor:	Core i3 (or higher)
Memory RAM:	16 GB (24 GB or higher recommended for optimal performance)
Hard Drive space:	120 GB

Software Specification

The following operating systems are supported:

Windows 10 x86 (32-Bit) & x64 (64-Bit).

Windows 11 x86 (32-Bit) & x64 (64-Bit).

Windows Server 2016 or higher.

Database

KELTON MeterManager uses a SQL database that can be installed on SQL Server 2019 or higher.

If a database is being locally installed Microsoft® SQL Server® Express can be used. The latest version can be downloaded free of charge from the Microsoft website.

Prerequisites

All prerequisites required for installing the software are included on the installation disk and will be installed where required.

If you are using OPC which is not installed on the same server, you may need to install OPCEnum. This is a requirement for OPC server detection and not a Kelton MeterManager requirement. Refer to the "KMM OPC Guide" for more information.

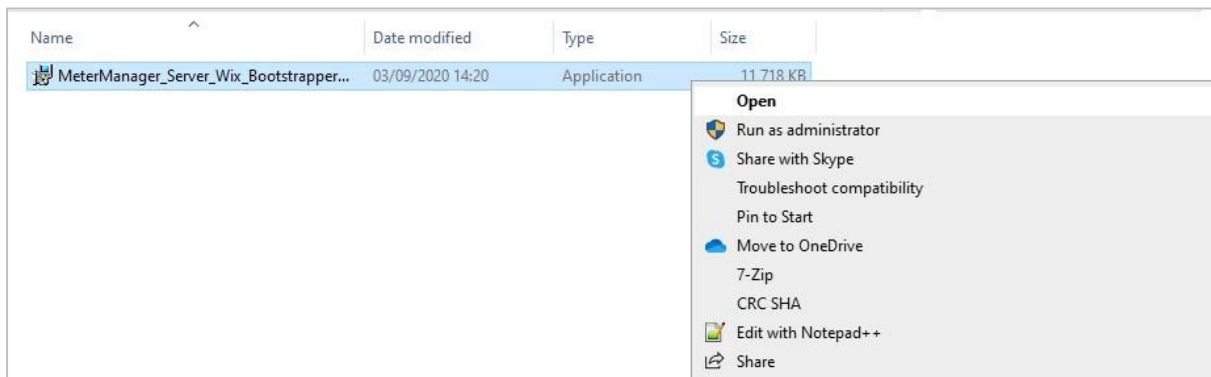
3 KELTON MeterManager Server Installation

Previous Versions

If a version of KELTON MeterManager Server is already installed this must be uninstalled prior to installing the new version.

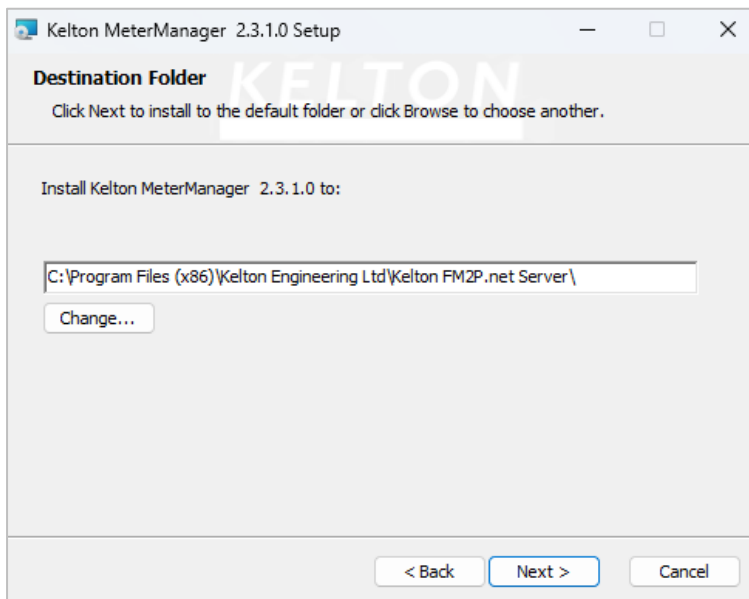
Run Setup

Run the .exe file. As below.



Select Location for Application

After accepting the licence agreement, an opportunity to change the location where the software is to be installed will be provided. KELTON recommends accepting the default location.



Select Database Options

There are two options available for the installation:

Choose Items to Install
Select the way you want features to be installed.

Click the icons in the tree below to change the way features will be installed.

Install and connect to an existing database
The first option is for when you want to install Kelton MeterManager server and connect to an existing database

Install and connect to a database manually
The second option is for installing Kelton MeterManager server and then configuring the database connections and windows service manually

Install and Connect to an Existing Database

If a database is already installed on a server, select this option and a new database will not be created. This is the option to use if KELTON has supplied a configured database previously.

Install and Connect to Database(s) Manually

This option will not step through the process of connecting to the database.

Server Details

The selected computer on which the KELTON MeterManager Server software is installed can be Physical or Virtual but does not require a 'Server' Operating System.

MeterManager Server Details
Please enter the hostname and port number that you want this MeterMana...

Server Hostname or IP address: localhost

Server Port: 8088

SSL (offline) Port: 8443

KELTON MeterManager HOSTNAMES/IP


The KELTON MeterManager Hostname/IP entry should be unchanged.

KELTON MeterManager Server Port

The KELTON MeterManager Server Port can be changed if required, but generally the default would be used unless it conflicts with a port which is already assigned.

Choose Database Server

Connecting to the database server

Connecting to the database server 

Enter authentication information

Database server name: (local)\SQLEXPRESS

Connecting to the server:

Using Windows Authentication
 Using SQL Server Authentication

Username:

Password:

Database Name: TestDB

Test connection < Back Next > Cancel

New Database

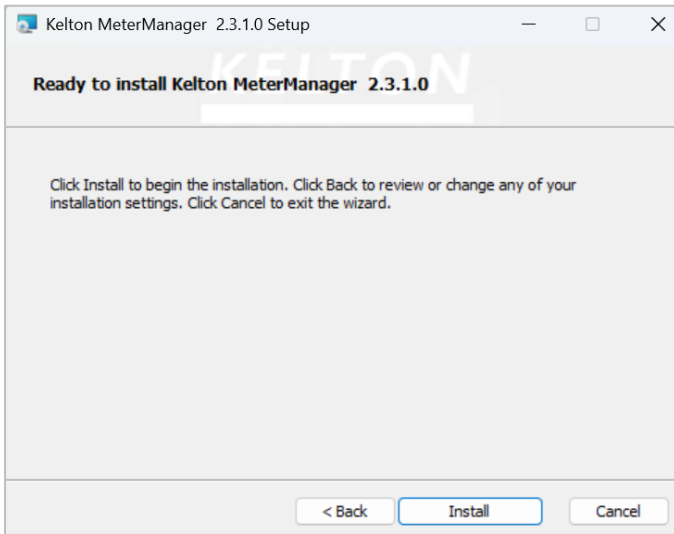
Browse to the selected database server to create the new database and enter the name for the database to be created.

Existing/Configured Database

If in Section 3 it was decided to connect to an existing database, this screen will enable the selection of the database to connect to. We would recommend using the "Test connection" button to check that this has been successful.

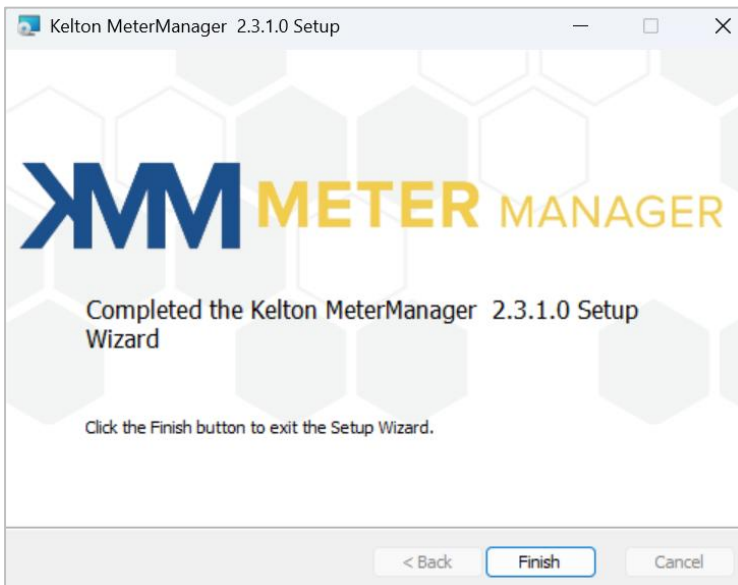
Install

The KELTON MeterManager Server application is ready to be installed.



Confirmation of a Successful Installation

The window below is displayed when the installation has successfully been completed.



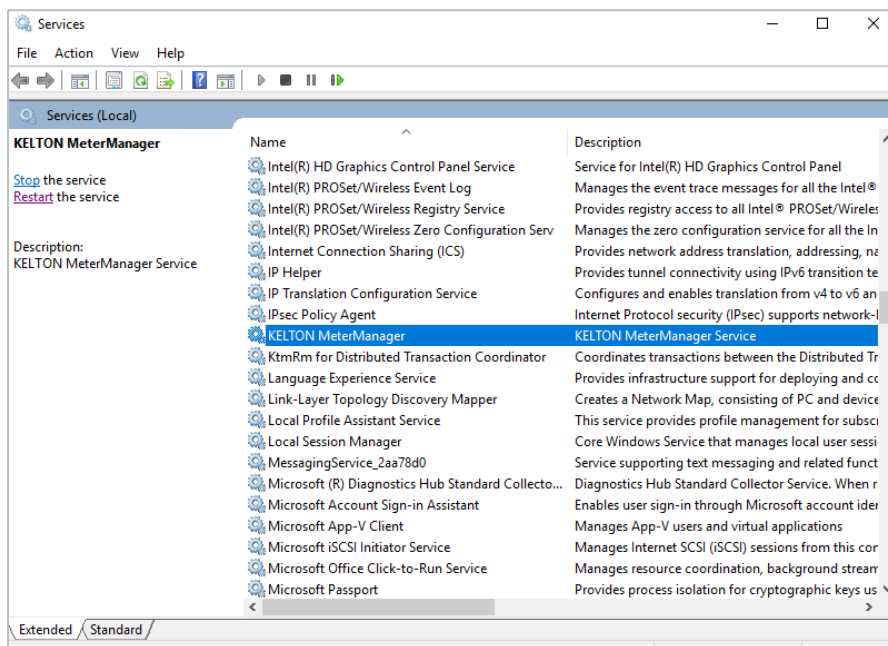
This is confirmed by the creation of a Windows Service 'KELTON MeterManager Service', which is started automatically on the selected machine.

The Windows Service is covered in the following sections.

Confirm Service Status

Once this window is displayed, open the Services Management Console and check that the 'KELTON MeterManager Service' has started.

Note: The KELTON MeterManager needs to be run as an account which has read/write access to the database.



Complete the Installation of your KELTON MeterManager System

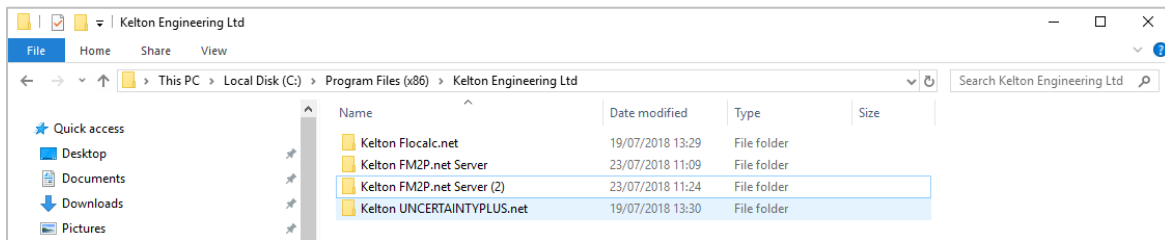
To complete the installation of your KELTON MeterManager System, please refer to the KELTON MeterManager Client Installation Manual.

4 Multiple KELTON MeterManager Services on the Same KELTON MeterManager Server Computer

Multiple instances of KELTON MeterManager Server can be hosted on the same KELTON MeterManager Server computer, each to point to different databases, as shown below.

Copy the Server Installation Folder

Copy the folder KELTON MeterManager Server. This can be renamed as desired to identify the name of the specific site / database.

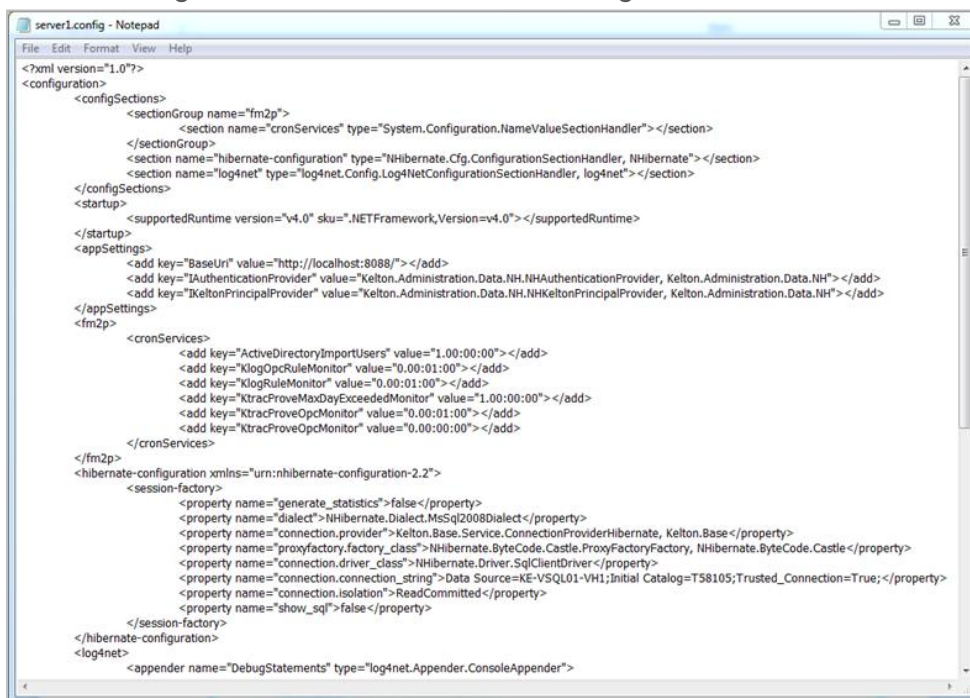


Edit the 'Server1' Configuration File

In the new (copied) folder edit the file Server1.config

Two edits are required

- Change the port number
- Change the database connection string



The Port Number requires to be altered; as does the SQL Server and Database entries to which connection is to be made; as indicated above.

NOTES:

- Opening Notepad with the *Run as administrator* switch as this will allow the edits to be made and saved in-situ.
- Alternatively, first copy this file to a different location to make the edit and copy the file back into place.

Create a New KELTON MeterManager Server Service

This requires the following command to be run from a command prompt with *Elevated Privileges* using the *Run As administrator* option as described below:

- Go to C:\Windows\System32
- Right-click *cmd.exe*.
- Select the *Run as administrator* option.
- If prompted by User Account Control, select Yes.
- Enter the details as shown below.

```
sc create <InstanceName> binpath= <ServiceName> displayname= <DisplayName>
```

For example:

```
sc create MeterManagerserver2 binpath= "C:\Program Files\Kelton Engineering Ltd\Kelton FM2P.net Server(2)\WindowsWcfServiceHost.exe" displayname= "Kelton MeterManager.net Facility 2"
```

Where:

<InstanceName>

This is a unique identifier for each service

<ServiceName>.

This is the path to the *WindowsWcfServiceHost.exe* file in the relevant copy of the installation folders which is in this case as detailed below:

```
C:\Program Files\Kelton Engineering Ltd\Kelton FM2P.net Server(2)\WindowsWcfServiceHost.exe
```

<DisplayName>.

This is a meaningful name for the service after it is created. In this case the value "Kelton MeterManager Facility 2" is used.

Confirm the New Service is Installed

Confirm the service is installed by opening the services section under 'Computer Management'. It is also possible to start the service and choose the start-up type.

Uninstalling Services

Services can be uninstalled using the 'sc delete' command if required.

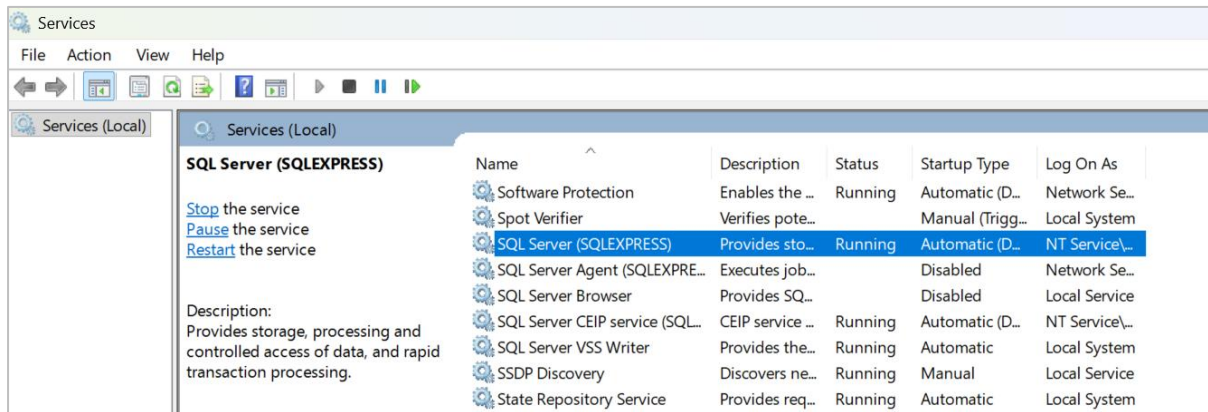
5 Automatically Starting KELTON MeterManager Servers (Local Installations Only)

General

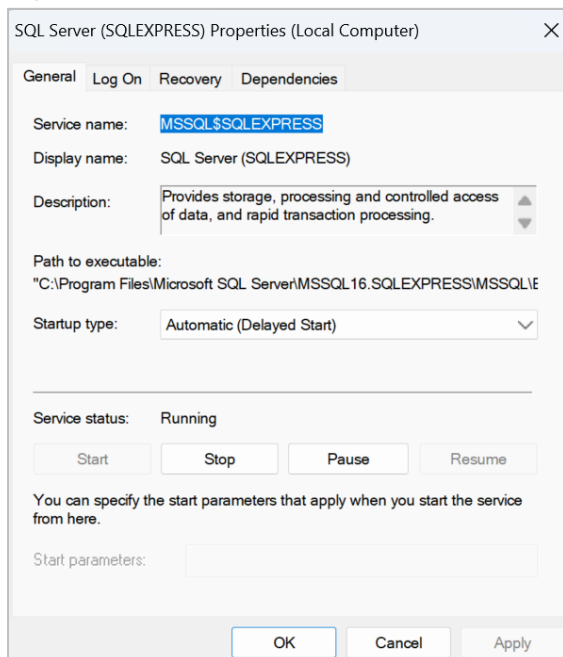
When the KELTON MeterManager server, client and database are installed to run locally on the same PC, the following procedure can be used.

This procedure automatically starts the KELTON MeterManager server when the computer starts.

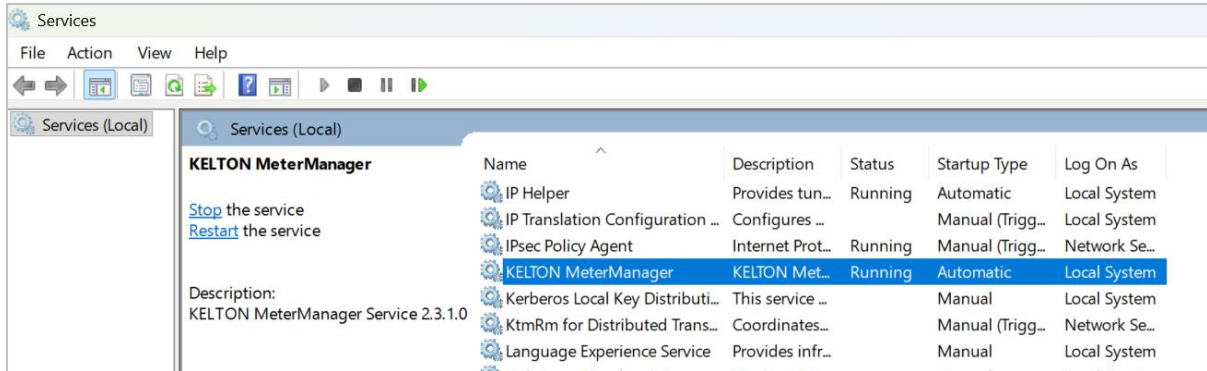
Locate the KELTON MeterManager SQL Database Service



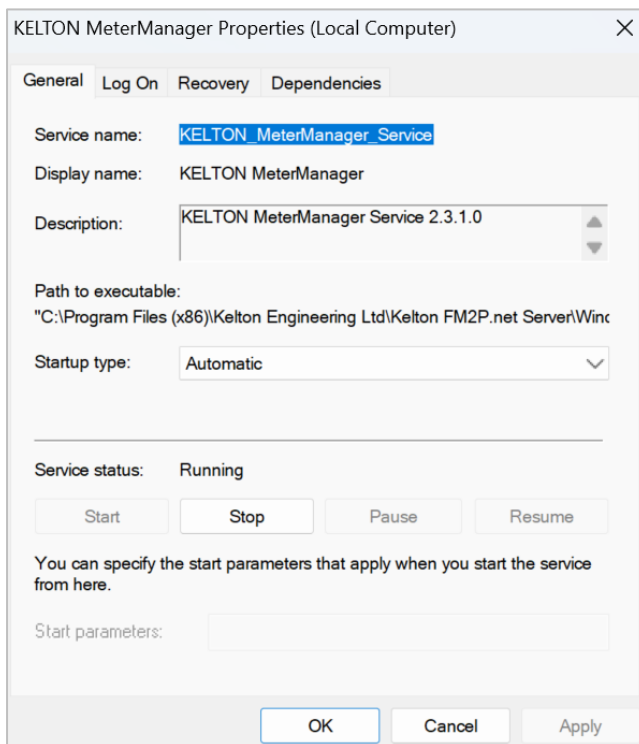
Right-click the service and select "Properties" to determine the service name.



Locate the KELTON MeterManager Service



Right-click the service and select "Properties" to determine the service name.



Modify the KELTON Service

Modify the Kelton MeterManager service so that it is dependent on the KELTON MeterManager SQL database service:

Run a command prompt with *Elevated Privileges* as detailed in Section 3 and type the following command:

```
sc config <MeterManager Server Service name> Depend= <MeterManager SQL database service>
```

In this example it would be:

```
sc config KELTON_MeterManager_Service Depend= MSSQL$SQLEXPRESS  
(Note: Quotation marks are required if the server name contains spaces).
```

```
Administrator: Command Prompt  
Microsoft Windows [Version 10.0.26200.7628]  
(c) Microsoft Corporation. All rights reserved.  
C:\Windows\System32>sc config KELTON_MeterManager_Service Depend= MSSQL$SQLEXPRESS
```

Check the KELTON MeterManager Service Properties

