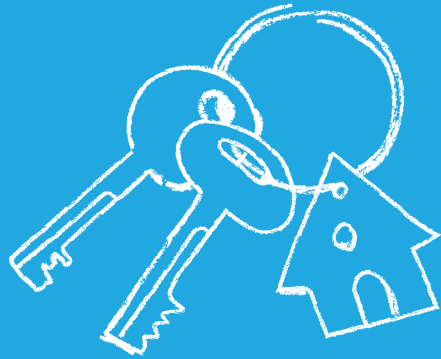


# Erleigh Road

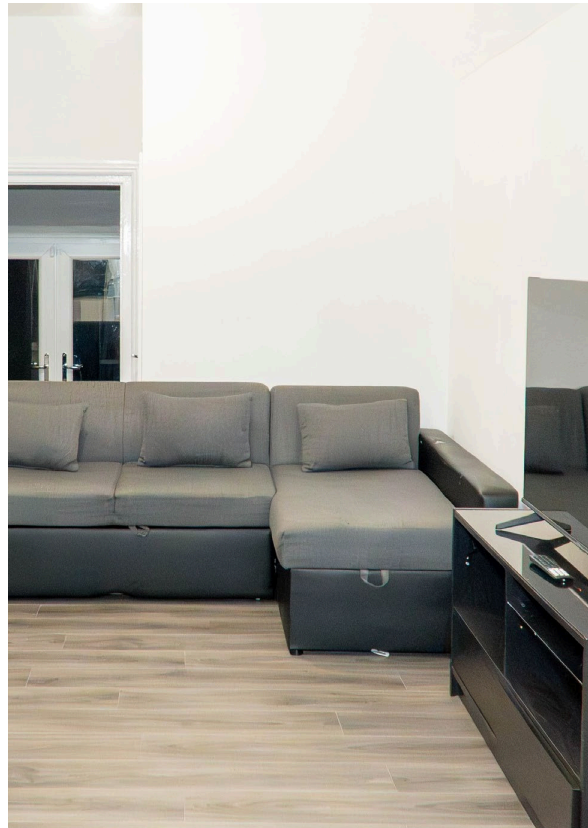
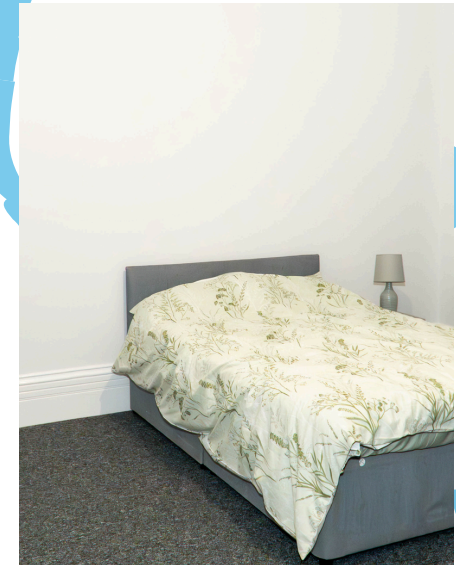


Supported  
Accommodation (16+)

Reading, Berkshire



Liberty  
Supported  
Living



The provision at 9 Erleigh Road, Reading, RG1 5LR, is a spacious 6-bedroom house designed to support young people. It includes 2 bathrooms and offers a large kitchen with a living room area, where young people can cook, relax, and socialise together.

The property provides a comfortable and safe environment, with plenty of space for everyone. The shared kitchen and living room area create an open and welcoming atmosphere for the young people.



Liberty  
Supported  
Living



6 BEDROOMS



2 BATHROOMS



1 KITCHEN



## WHAT THIS HOME OFFERS

In summary, 9 Erleigh Road offers a comfortable and supportive home for young people, with easy access to everything they need to help them grow and live independently.

## THE LOCAL AREA

Located in a quiet area of Reading, the provision is right next to the hospital, ensuring quick access to healthcare services when needed. It is also close to local shops, supermarkets, and essential services. Parks and green spaces nearby provide opportunities for outdoor activities, and public transport links make it easy for young people to get to schools, colleges, and other important places.

## WHO WE SUPPORT

Three young people under Section 20 care, receiving personalised support in a safe and nurturing environment.

Two asylum seekers, who are being supported with integration into the community and access to education.

## GET IN TOUCH!

**Sarah Mushaniga**  
*Placements & Compliance Manager*  
+44 7494 254929  
[sarah@libertysupportedliving.co.uk](mailto:sarah@libertysupportedliving.co.uk)

**Fred Mushaniga**  
*Director & Registered Service Manager*  
+44 7939 289720  
[fred@libertysupportedliving.co.uk](mailto:fred@libertysupportedliving.co.uk)

[www.libertysupportedliving.co.uk](http://www.libertysupportedliving.co.uk)