

Norfolk Avenue

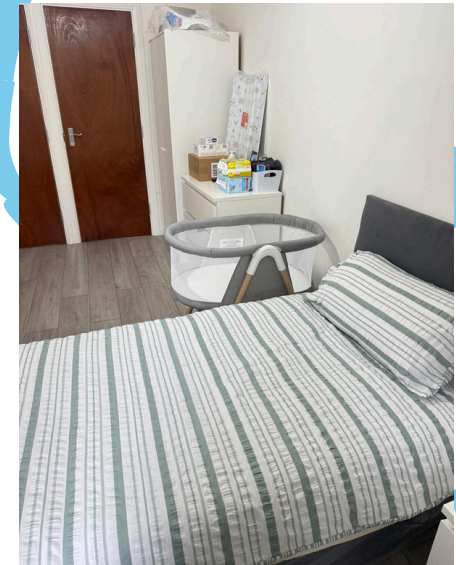


Step Down
Mother & Baby Unit

Slough, Berkshire



Liberty
Supported
Living



Norfolk Avenue is a calm, welcoming space where mothers can settle in, feel heard, and begin to build a life with their child. It's more than accommodation, it's a place to breathe, grow in confidence, and take those next steps at your own pace.

Set in a quiet part of Slough, the home offers a balance of independence and support. You'll have your own space, shared areas for connection, and a team that's here to listen, guide, and walk alongside you.

We currently have 2 vacancies for mother and baby placements.



Liberty
Supported
Living



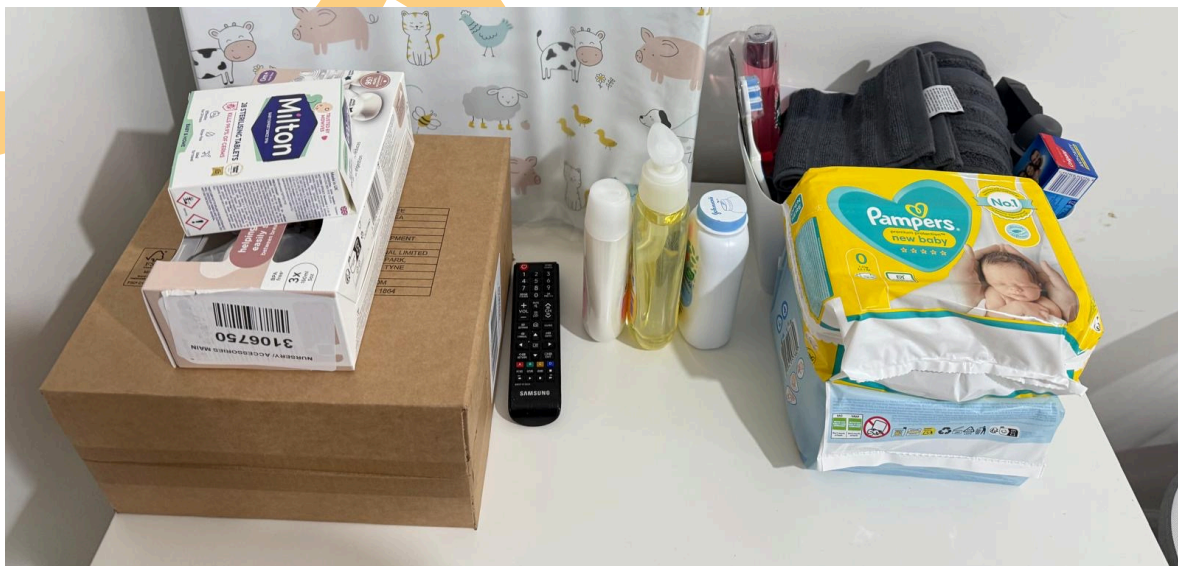
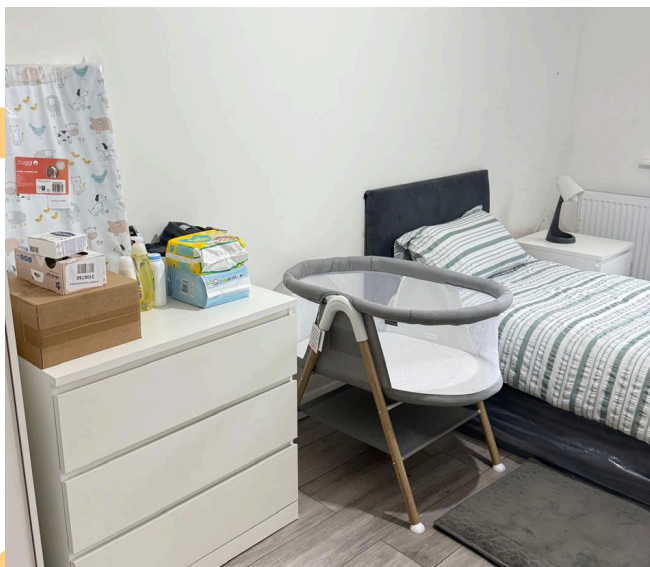
BEDROOM



EN-SUITE



GARDEN



WHAT THIS HOME OFFERS

The home includes a private en-suite bedroom, shared kitchen, and a calm communal space, all designed to feel safe, respectful, and welcoming. There's also a quiet support room for one-to-one conversations, check-ins, or just space to reflect. Everything is set up to help mothers feel steady, supported, and at home.

THE LOCAL AREA

- **Healthcare:** GP practices and walk-in centres
- **Education:** Access to local training centres and colleges
- **Shops & transport:** Nearby public transport links and shopping areas
- **Community resources:** Local support groups and baby-friendly services

WHO WE SUPPORT

At Liberty Supported Living, we know that becoming a parent is one of life's biggest transitions, and no one should face it alone. Norfolk Avenue offers more than just safety. It's a steady, supportive space where young mothers and their babies can feel cared for, build confidence, and take meaningful steps forward.

GET IN TOUCH!

Sarah Mushaniga
Placements & Compliance Manager
+44 7494 254929
sarah@libertysupportedliving.co.uk

Fred Mushaniga
Director & Registered Service Manager
+44 7939 289720
fred@libertysupportedliving.co.uk

www.libertysupportedliving.co.uk