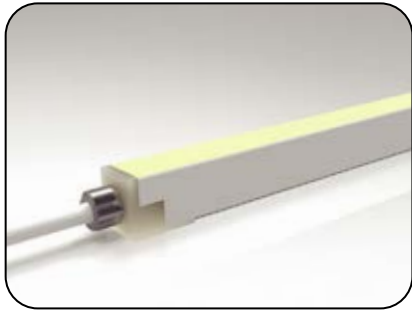
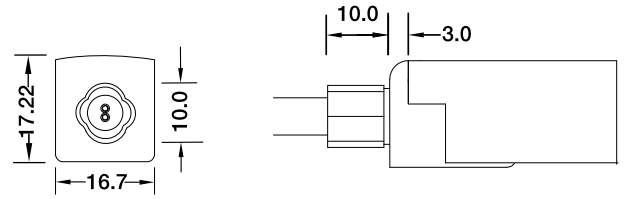


SF16 Configuration and Accessories

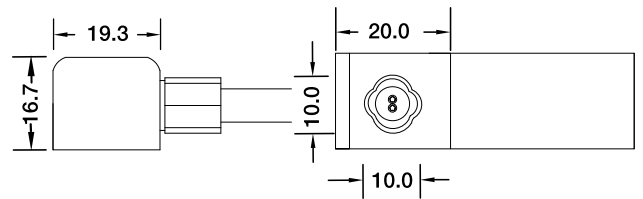
Mold injection Connector (IP68 Factory Assembly Only)



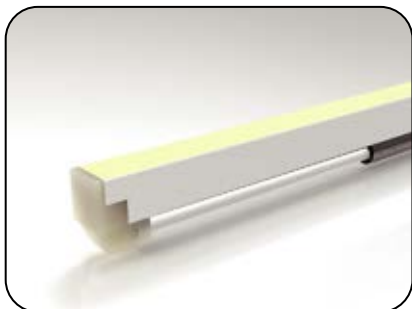
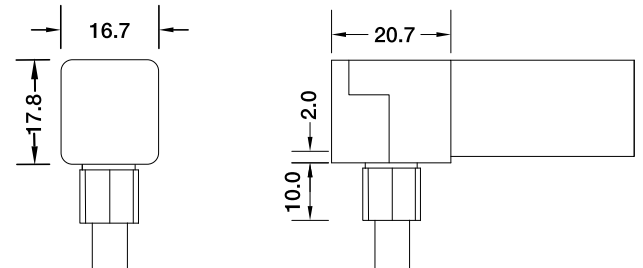
Direct Entry Connector
MJ-SF16-A-D01/02/03
MJ-SF16-A-D01SM
MJ-SF16-A-D02SF
MJ-SF16-A-D03SFM



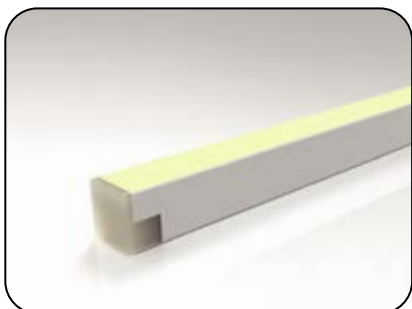
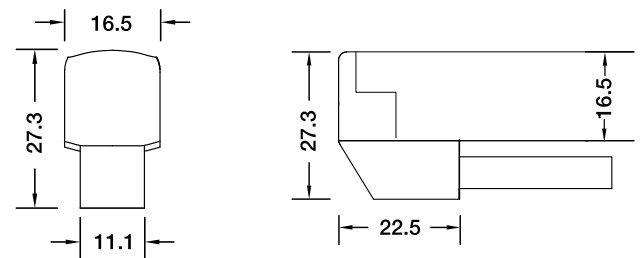
Side Entry Connector
MJ-SF16-A-S01/02/03
MJ-SF16-A-S01SM
MJ-SF16-A-S02SF
MJ-SF16-A-S03SFM



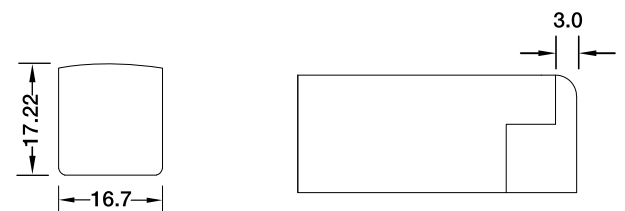
Bottom Entry Connector
MJ-SF16-A-B01/02/03
MJ-SF16-A-B01SM
MJ-SF16-A-B02SF
MJ-SF16-A-B03SFM



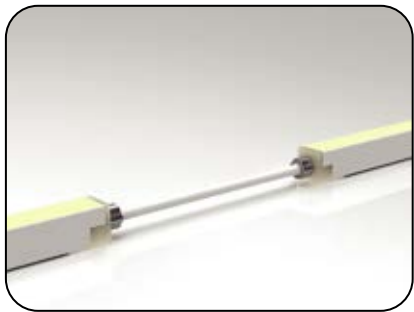
L Shape Entry Connector
MJ-SF16-A-L01/02/03
MJ-SF16-A-L01SM
MJ-SF16-A-L02SF
MJ-SF16-A-L03SFM



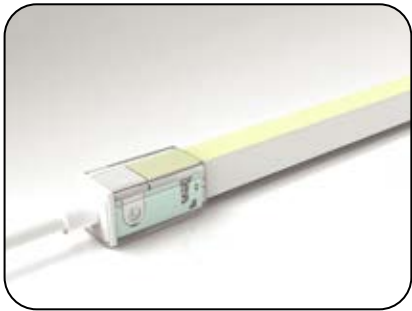
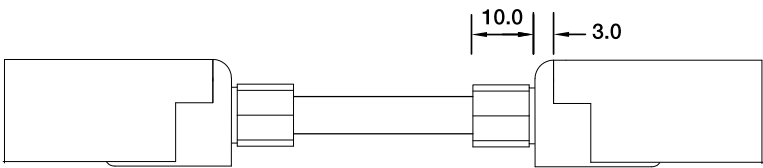
End Cap



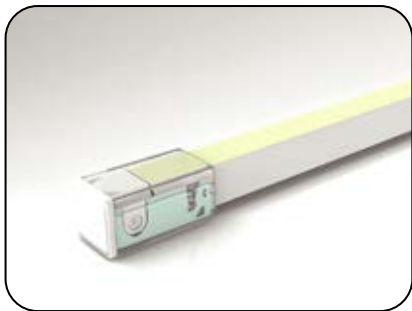
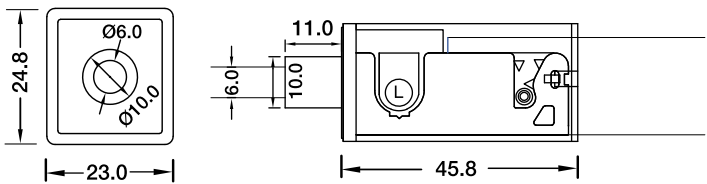
SF16 Configuration and Accessories



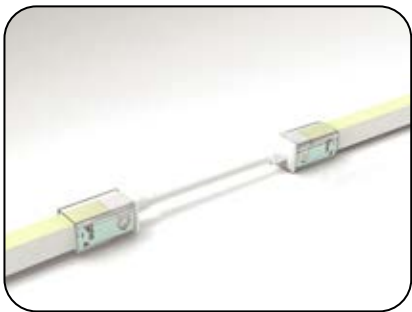
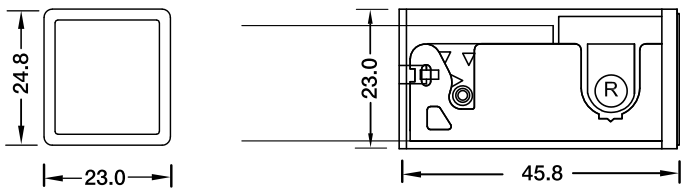
Jumper
MJ-SF16-A-D-JC



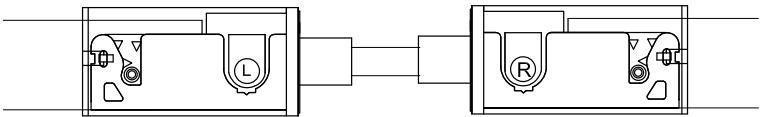
DIY Snap Connector
DIY-SN-FR-16-D-01/02-A



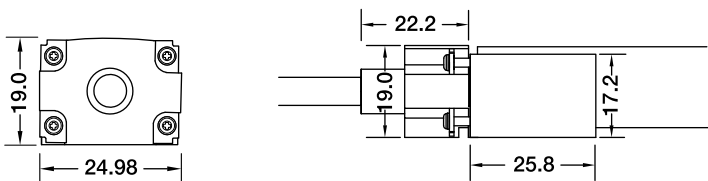
DIY Snap End Cap
DIY-SN-END-16-D-01/02



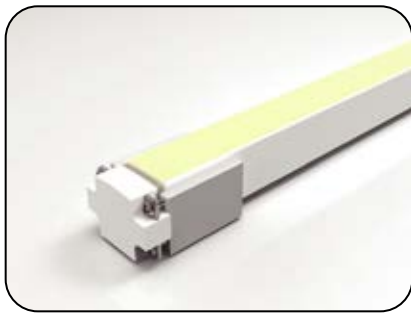
DIY Snap Connector Jumper
DIY-SN-FR-16-A-D-JC



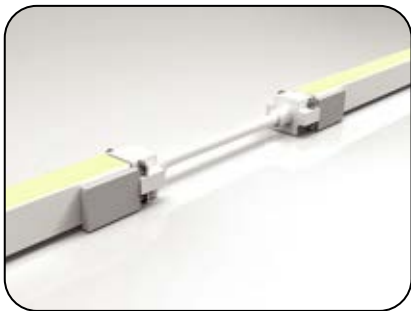
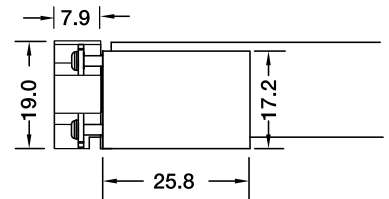
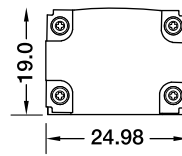
DIY Screw Connector
DIY-SC-FR-16-D-01/02-A



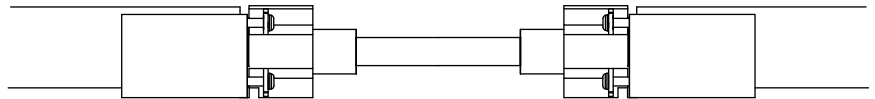
SF16 Configuration and Accessories



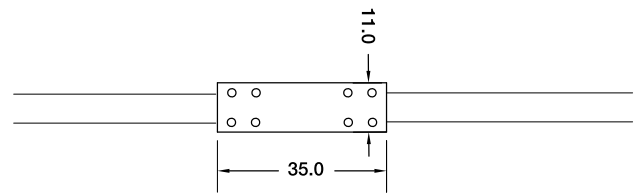
DIY Screw Connector
DIY-SC-END-16



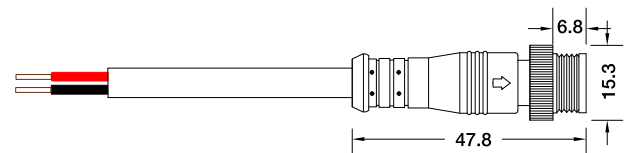
DIY Screw Extension Connector
DIY-SC-EXT-16-A



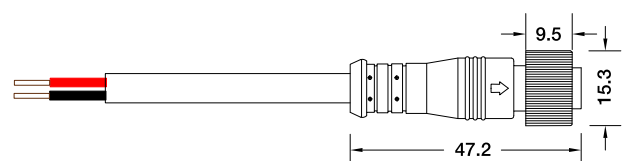
Waterproof Interrupter



Male Connector
SYZ-M12-M-2C-075-W



Female Connector
SYZ-M12-F-2C-075-W

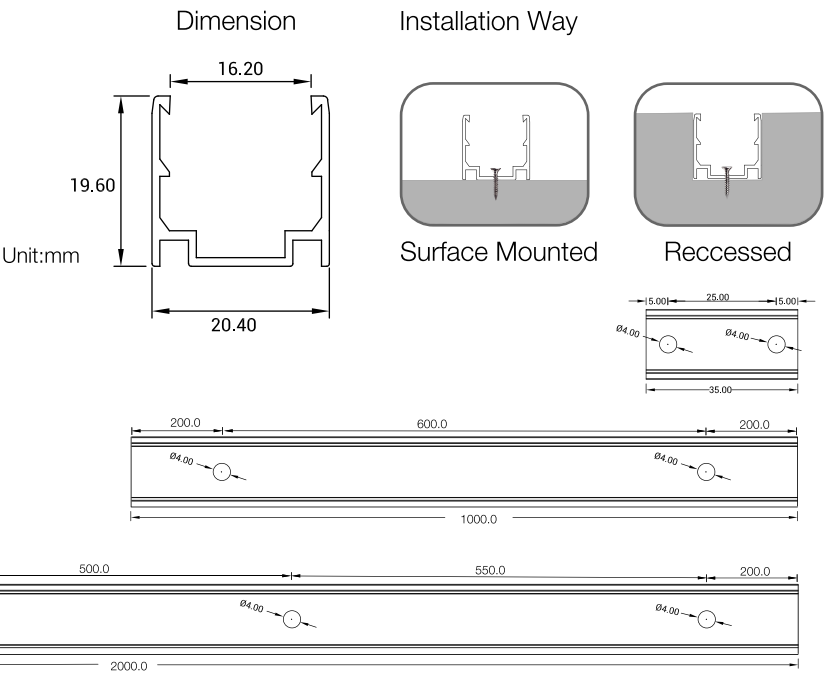


LED Linear Flex Mounting Channel

1. Aluminum Channel



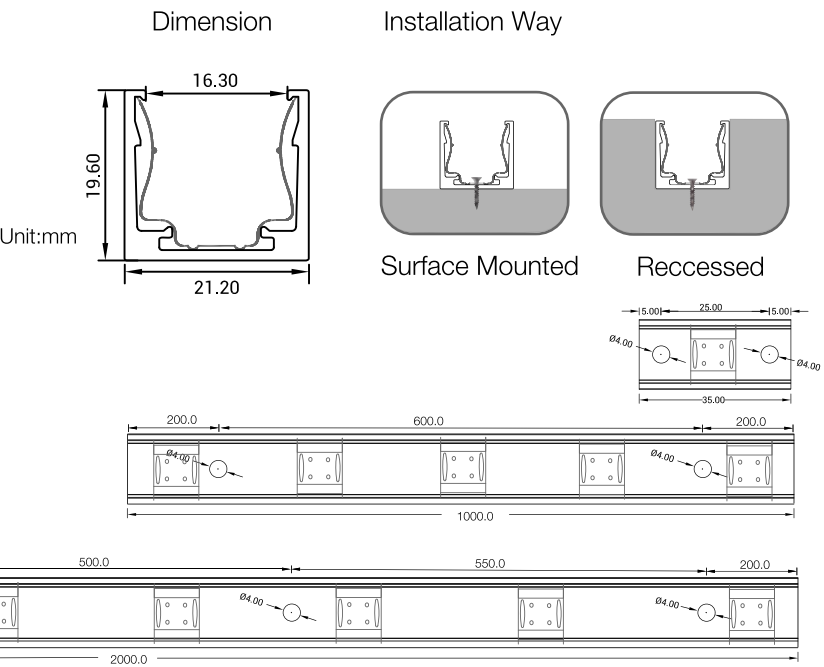
ALC16S02



Model	W x H(mm)	Standard Length	Screw Holes	Holes Numbers	Suitable Product
ALC16S02-035	20.4*19.6	35mm	Ø4.0mm	2	F16, SF16
ALC16S02-100		1000mm	Ø4.0mm	2	F16, SF16
ALC16S02-200		2000mm	Ø4.0mm	4	F16, SF16

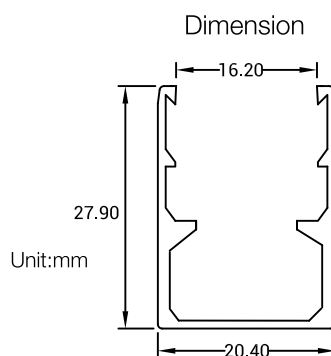


ALC16S03

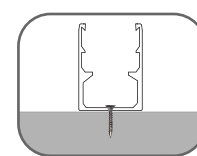


Model	W x H(mm)	Standard Length	Screw Holes	Holes Numbers	Clips	Suitable Product
ALC16S03-035	21.2*19.6	35mm	Ø4.0mm	2	1	F16, SF16
ALC16S03-100		1000mm	Ø4.0mm	2	5	F16, SF16
ALC16S03-200		2000mm	Ø4.0mm	4	8	F16, SF16

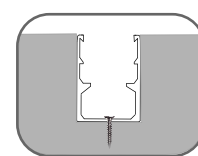
LED Linear Flex Mounting Channel



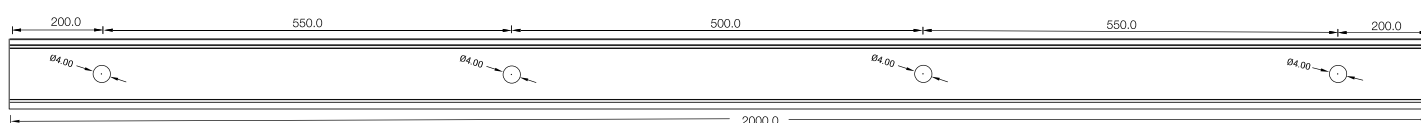
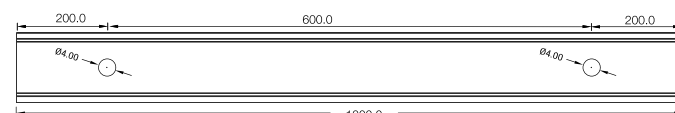
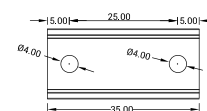
Installation Way



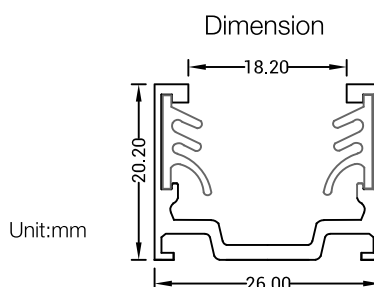
Surface Mounted



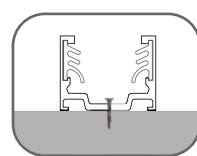
Recessed



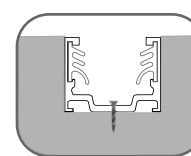
Model	W x H(mm)	Standard Length	Screw Holes	Holes Numbers	Suitable Product
ALC16H01-035	20.4*27.9	35mm	Φ4.0mm	2	F16, SF16
ALC16H01-100		1000mm	Φ4.0mm	2	F16, SF16
ALC16H01-200		2000mm	Φ4.0mm	4	F16, SF16



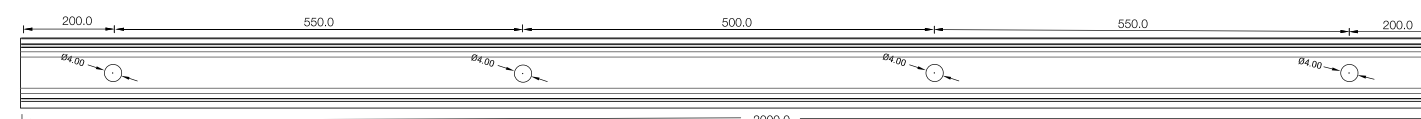
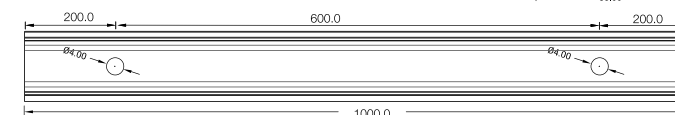
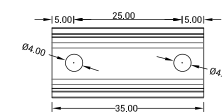
Installation Way



Surface Mounted



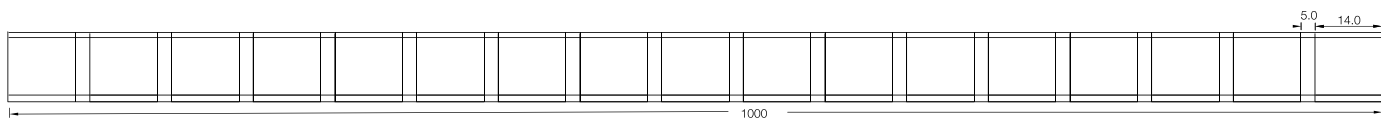
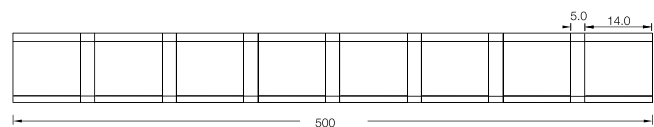
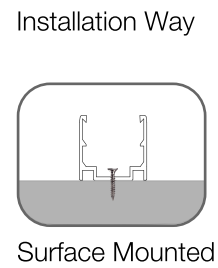
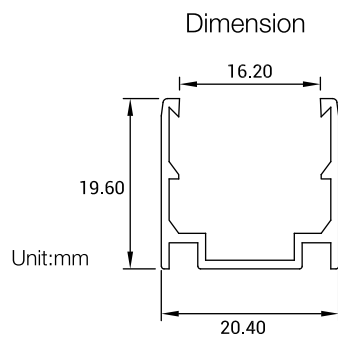
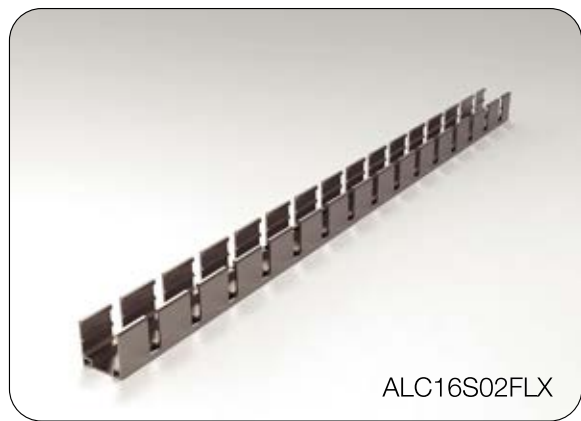
Recessed



Model	W x H(mm)	Standard Length	Screw Holes	Holes Numbers	Clips	Suitable Product
ALC16S04-035	26.0*20.2	35mm	Φ4.0mm	2	2	F16, SF16
ALC16S04-100		1000mm	Φ4.0mm	2	2	F16, SF16
ALC16S04-200		2000mm	Φ4.0mm	4	2	F16, SF16

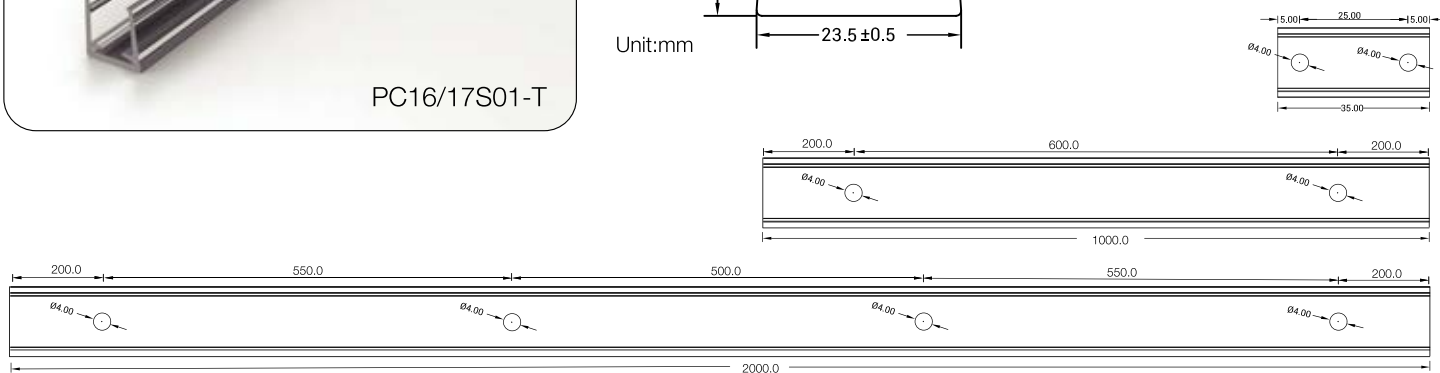
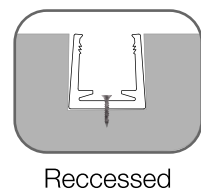
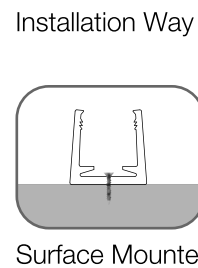
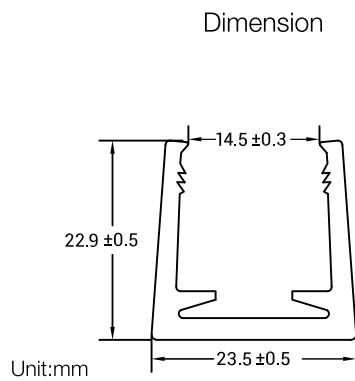
LED Linear Flex Mounting Channel

2. Flexible Aluminum Channel



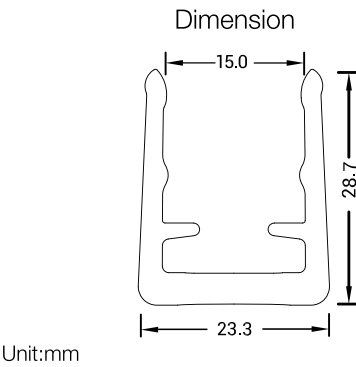
Model	W x H(mm)	Standard Length	Suitable Product
ALC16S02FLX-05	20.4*19.6	500mm	F16, SF16
ALC16S02FLX-10		1000mm	F16, SF16

3. Plastic Channel

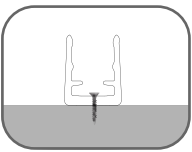


Model	W x H(mm)	Standard Length	Screw Holes	Holes Numbers	Suitable Product
PC16/17S01-T-100	24.6*22.9	1000mm	Ø4.0mm	2	F16, SF16

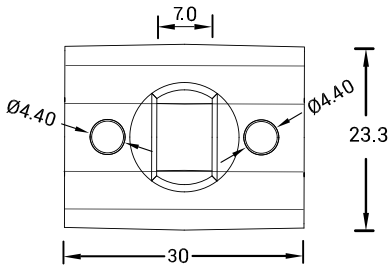
LED Linear Flex Mounting Channel



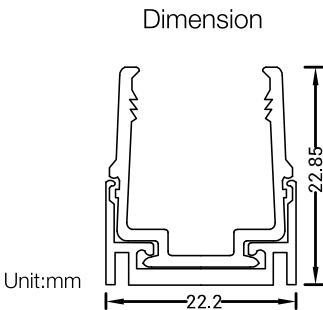
Installation Way



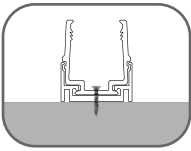
Surface Mounted



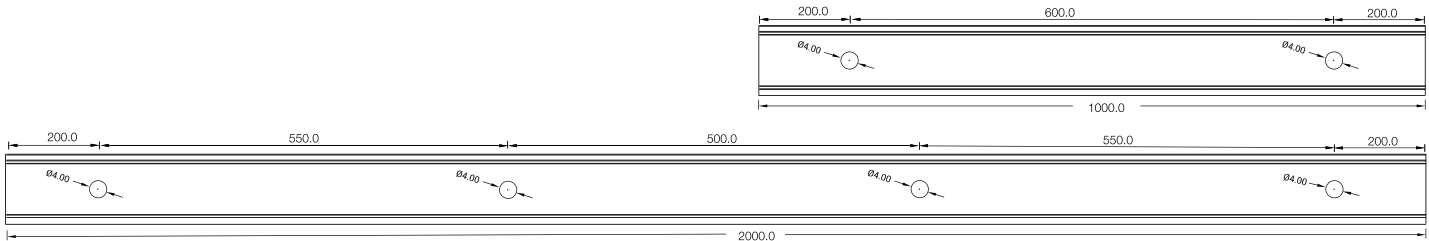
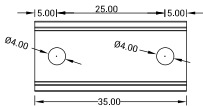
Model	W x H(mm)	Standard Length	Screw Holes	Holes Numbers	Suitable Product
SJJ-ZSH-008-PC	23.3*28.7	30mm	Ø4.40mm	2	F16, SF16



Installation Way



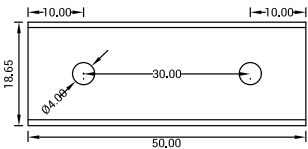
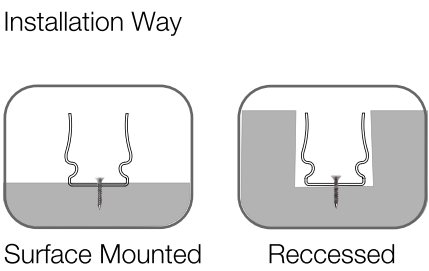
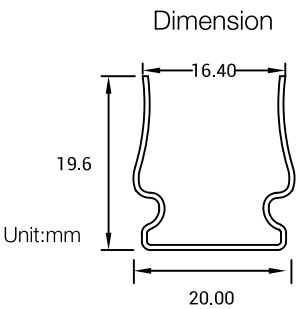
Surface Mounted



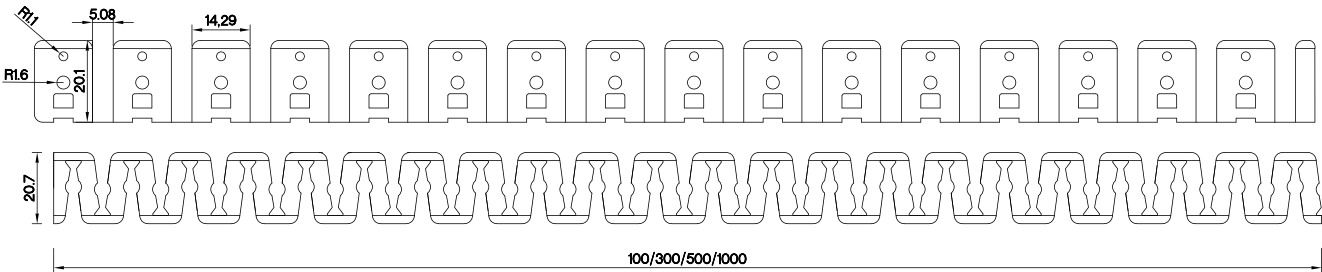
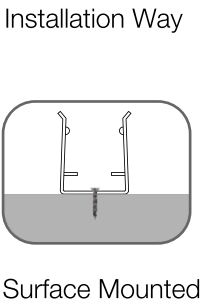
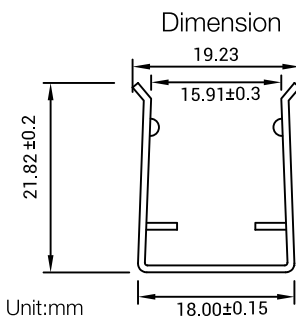
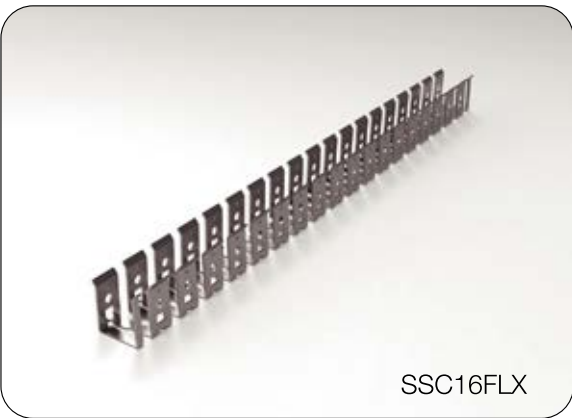
Model	W x H(mm)	Standard Length	Screw Holes	Holes Numbers	Suitable Product
ALC-PC18S01-ST-035	22.2*22.85	35mm	Ø4.0mm	2	F16, SF16
ALC-PC18S01-ST-100		1000mm	Ø4.0mm	2	F16, SF16
ALC-PC18S01-ST-200		2000mm	Ø4.0mm	4	F16, SF16

LED Linear Flex Mounting Channel

4. Stainless Steel Channel



Model	W x H(mm)	Standard Length	Screw Holes	Holes Numbers	Suitable Product
SSC16S01-05	20.0*19.6	50mm	Φ4.0mm	2	F16, SF16



Model	W x H(mm)	Standard Length	Suitable Product
SSC16FLX01	18.15*22.0	100mm	F16, SF16
SSC16FLX03		300mm	F16, SF16
SSC16FLX05		500mm	F16, SF16
SSC16FLX10		1000mm	F16, SF16

LED linear Flex Packing Details



Standard: Carton (Paper Reel Inside)

Product	Max.Length	Carton Size	Net Weight	Gross Weight
F15/SF15	30m	34*34*18cm	12kg	13.6kg
F16/SF16	20m	34*34*18cm	8.6kg	10.2kg
F17/SF17	20m	34*34*18cm	8.6kg	10.2kg
F18/SF18	20m	34*34*18cm	8.6kg	10.2kg
F21/SF21	20m	34*34*18cm	10.4kg	12.0kg
F10/SF10	30m	34*34*18cm	9.6kg	11.2kg
F09/SF09	35m	34*34*18cm	5.8kg	7.4kg
F08/SF08	30m	34*34*18cm	7.2kg	8.8kg
F06/SF06	30m	34*34*18cm	7.2kg	8.8kg



Custom: Carton (White Box+ Plastic Plate Inside)

Product	Package 1 Dimension	Length	Gross Weight	Package 2 Dimension	Length	Gross Weight
F15/SF15	38*38*3cm	5m	2.5kg	45*55*3cm	10m	5kg
F16/SF16	38*38*3cm	5m	2.6kg	51*61*4cm	10m	5.2kg
F17/SF17	38*38*3cm	5m	2.6kg	51*61*4cm	10m	5.2kg
F18/SF18	38*38*3cm	5m	2.6kg	51*61*4cm	10m	5.2kg
F21/SF21	38*38*3cm	5m	3.1kg	51*61*4cm	10m	6.2kg
F10/SF10	38*38*3cm	5m	2.0kg	45*55*3cm	10m	4kg
F09/SF09	38*38*3cm	5m	1.5kg	45*55*3cm	10m	3kg
F08/SF08	38*38*3cm	5m	1.5kg	45*55*3cm	10m	3kg
F06/SF06	38*38*3cm	5m	1.5kg	45*55*3cm	10m	3kg